

# Munich Cancer Registry



- ▶ Incidence and Mortality
- ▶ Selection Matrix
- ▶ Homepage
- ▶ *Deutsch*

## ICD-10 C00-C96.9: All cancers (excl. C44)

### Survival

Year of diagnosis	1988-1997	1998-2020
Patients	62,906	427,374
Diseases	66,396	477,498
Cases evaluated	58,593	350,609
Creation date	04/15/2022	
Database export	12/20/2021	
Population	4.92 m	



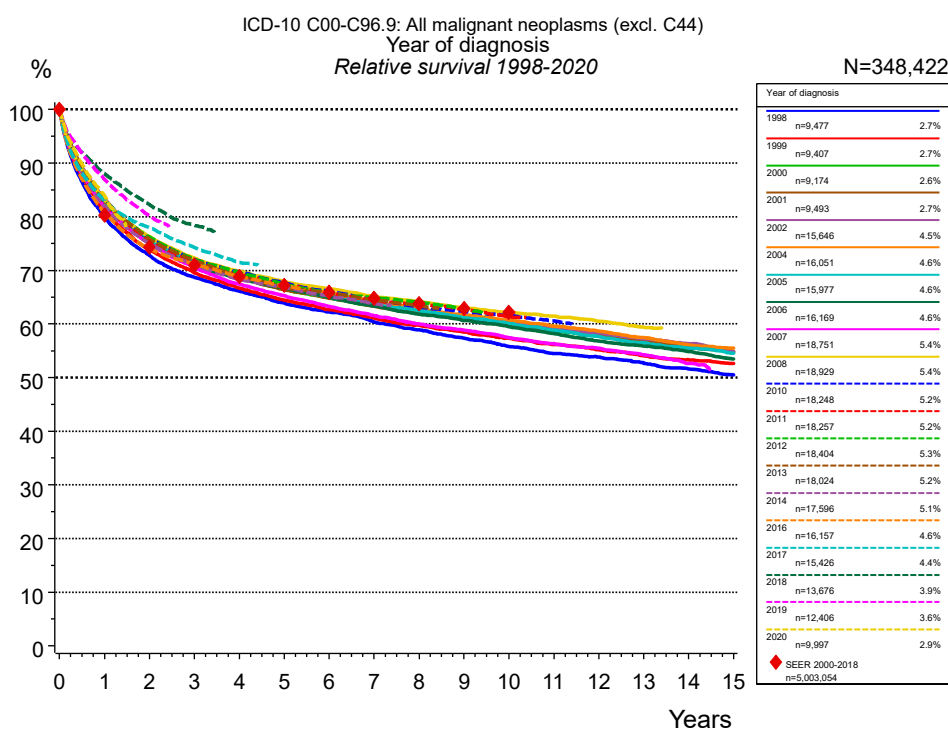
Munich Cancer Registry  
Cancer Registry Bavaria - Upper Bavaria Regional Center  
at Klinikum Grosshadern/IBE  
Marchioninstr. 15  
Munich, 81377  
Germany

<https://www.tumorregister-muenchen.de/en>

<https://www.tumorregister-muenchen.de/en/facts/surv/sC0096E-ICD-10-C00-C96.9-All-cancers-excl.-C44-survival.pdf>

# Index of figures and tables

Fig./Tbl.	Page
1a Relative survival by year of diagnosis (chart)	3
1b Survival by year of diagnosis (table)	3
1c Relative survival by year of diagnosis (males) (chart)	5
1d Survival by year of diagnosis (males) (table)	5
1e Relative survival by year of diagnosis (females) (chart)	7
1f Survival by year of diagnosis (females) (table)	7
2a Survival by sex (chart)	9
2b Survival by sex (table)	9
2c Conditional survival by sex (chart)	10
2d Conditional survival by sex (table)	10
3a Observed survival by age category (chart)	11
3b Relative survival by age category (chart)	11
3c Survival by age category (table)	12
4a Relative survival by morphology (chart)	13
4b Survival by morphology (table)	13
5a Time to first progression (chart)	15
5b Time to first progression (table)	15
5c Observed post-progression survival (chart)	17
5d Observed post-progression survival (table)	17
5e Observed post-progression survival by period of progression (chart)	18
5f Observed post-progression survival by period of progression (table)	18



**Figure 1a.** Relative survival of patients with all cancers (excl. C44) by year of diagnosis. Included in the evaluation are 348,422 cases diagnosed between 1998 and 2020.

The survival results of the SEER program (Surveillance, Epidemiology, and End Results) of the American National Cancer Institute (NCI) are summarized as the period of diagnosis from 2000 to 2018, and are represented by colored diamonds in order to facilitate comparisons between MCR and SEER.

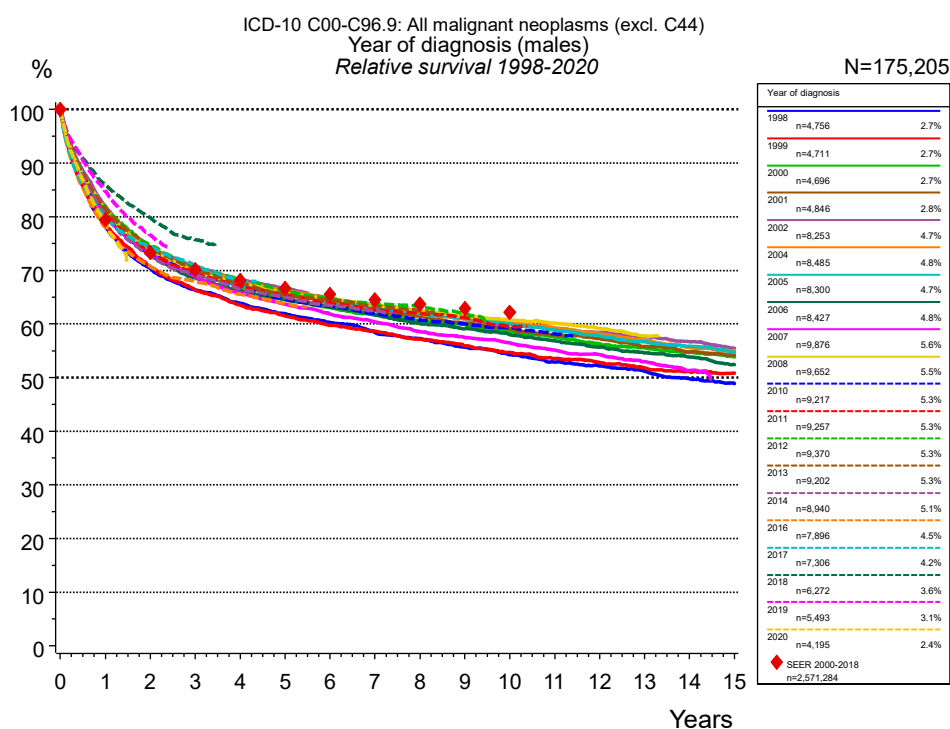
The presented survival curves are derived from clinical records with valid follow-up informations, which means that death certificate cases (DCO) cases are omitted from the analysis. With this one restriction, the MCR has provided population-based statistics since 1998, collecting data on all cancer cases in the region of southern Bavaria. Historical data of previous time periods can be heavily selected, therefore, univariate survival comparisons of the presented time periods must be carefully considered. Nonetheless, all calculable survival curves are depicted to facilitate the comparison of long time follow-up analyses of relative survival between particular cancers.

		Year of diagnosis															
		1998 n=9,477		1999 n=9,407		2000 n=9,174		2001 n=9,493		2002 n=15,646		2004 n=16,051		2005 n=15,977			
Years		obs. %	rel. %	obs. %	rel. %	obs. %	rel. %	obs. %	rel. %	obs. %	rel. %	obs. %	rel. %	obs. %	rel. %	obs. %	rel. %
0		100.0	100.0	100.0	100.0	100.0	100.0	100.0	100.0	100.0	100.0	100.0	100.0	100.0	100.0	100.0	100.0
1		77.6	80.0	78.8	81.1	80.8	83.1	80.8	83.0	81.1	83.4	81.0	83.1	80.5	82.7		
2		68.8	72.8	69.9	73.8	72.3	76.2	71.8	75.6	72.0	75.9	72.2	75.9	72.0	75.7		
3		63.3	68.7	64.2	69.5	66.5	71.8	66.5	71.6	66.5	71.9	66.8	71.8	66.5	71.6		
4		59.5	66.1	60.1	66.7	62.4	69.1	62.5	68.9	62.6	69.4	62.9	69.3	62.4	68.7		
5		56.1	63.9	56.7	64.4	58.6	66.5	58.9	66.4	59.4	67.4	59.8	67.4	59.3	66.9		
6		53.3	62.2	53.8	62.6	55.9	64.9	56.1	64.8	56.3	65.4	57.1	65.9	56.2	64.9		
7		50.5	60.4	51.3	61.1	53.3	63.4	53.6	63.4	53.5	63.8	54.3	64.2	53.8	63.7		
8		48.0	58.9	49.0	59.7	51.0	62.1	51.4	62.2	51.2	62.6	51.9	62.9	51.4	62.5		
9		45.7	57.4	46.8	58.5	49.0	61.1	49.2	61.0	48.8	61.2	49.6	61.7	49.1	61.2		
10		43.3	55.8	44.8	57.3	46.8	59.8	47.3	60.1	46.7	60.2	47.6	60.7	47.0	60.1		
11		41.3	54.5	42.8	56.2	44.8	58.8	45.3	59.0	44.7	59.2	45.5	59.5	44.7	58.8		
12		39.7	53.8	41.1	55.2	42.9	57.8	43.5	58.1	42.9	58.3	43.6	58.6	42.7	57.7		
13		37.9	52.7	39.2	54.0	41.1	56.9	41.4	56.8	41.0	57.3	41.6	57.5	40.7	56.5		
14		36.1	51.6	37.6	53.3	39.2	55.6	39.5	55.6	39.1	56.3	39.5	56.1	38.8	55.5		
15		34.4	50.4	36.2	52.6	37.6	54.8	37.9	54.9	37.0	54.9	37.9	55.5	37.0	54.5		
Median		7.2		7.5		8.5		8.7		8.5		8.8		8.6			

cont'd	Year of diagnosis													
	2006		2007		2008		2010		2011		2012		2013	
	n=16,169		n=18,751		n=18,929		n=18,248		n=18,257		n=18,404		n=18,024	
Years	obs. %	rel. %	obs. %	rel. %	obs. %	rel. %	obs. %	rel. %	obs. %	rel. %	obs. %	rel. %	obs. %	rel. %
0	100.0	100.0	100.0	100.0	100.0	100.0	100.0	100.0	100.0	100.0	100.0	100.0	100.0	100.0
1	80.2	82.3	79.8	81.9	81.1	83.2	80.7	82.7	80.5	82.5	80.8	82.9	81.1	83.2
2	71.3	75.0	71.4	75.0	72.7	76.3	72.4	75.9	71.9	75.5	72.7	76.2	72.3	75.8
3	65.9	70.9	65.6	70.5	67.3	72.3	67.2	72.0	66.7	71.6	67.2	72.1	67.0	71.8
4	62.1	68.5	61.2	67.4	63.6	69.8	63.5	69.7	63.0	69.2	63.3	69.5	62.9	68.9
5	59.0	66.7	57.8	65.3	60.4	67.9	60.3	67.6	60.0	67.3	60.0	67.3	59.6	66.8
6	56.1	64.9	54.8	63.3	57.9	66.6	57.6	66.1	57.2	65.7	57.4	65.9	57.4	65.7
7	53.4	63.3	52.0	61.6	55.3	65.1	55.0	64.6	54.7	64.3	55.2	64.9	54.9	64.4
8	50.8	61.8	49.4	60.0	53.1	64.1	52.6	63.2	52.9	63.7	53.2	64.1	52.8	63.4
9	48.6	60.7	47.2	58.8	50.9	63.1	50.6	62.3	50.9	62.8	50.8	62.8		
10	46.4	59.5	45.0	57.4	48.9	62.2	48.8	61.6	48.5	61.4				
11	44.2	58.2	42.9	56.3	47.1	61.4	46.7	60.5						
12	41.9	56.8	41.2	55.5	45.1	60.5								
13	40.1	55.9	39.2	54.3	43.0	59.4								
14	38.2	54.9	36.9	52.6										
15	36.1	53.5												
Median	8.4		7.8		9.5		9.3		9.4		9.3			

cont'd	Year of diagnosis									
	2014		2016		2017		2018		2019	
	n=17,596		n=16,157		n=15,426		n=13,676		n=12,406	
Years	obs. %	rel. %	obs. %	rel. %	obs. %	rel. %	obs. %	rel. %	obs. %	rel. %
0	100.0	100.0	100.0	100.0	100.0	100.0	100.0	100.0	100.0	100.0
1	79.9	82.0	78.8	80.8	81.0	83.0	86.0	88.1	85.0	87.0
2	71.6	75.1	70.6	74.0	74.4	77.9	78.5	82.3	76.6	80.2
3	66.2	71.0	66.5	71.1	69.3	74.3	73.2	78.4		
4	62.3	68.3	62.9	68.9	65.2	71.5				
5	59.6	66.9	59.9	67.1						
6	56.7	65.2								
7	54.3	63.9								
Median										

**Table 1b.** Observed (obs.) and relative (rel.) survival of patients with all cancers (excl. C44) by year of diagnosis for period 1998-2020 (N=348,422).



**Figure 1c.** Relative survival of patients with all cancers (excl. C44) by year of diagnosis (males). Included in the evaluation are 175,205 cases diagnosed between 1998 and 2020.

The survival results of the SEER program (Surveillance, Epidemiology, and End Results) of the American National Cancer Institute (NCI) are summarized as the period of diagnosis from 2000 to 2018, and are represented by colored diamonds in order to facilitate comparisons between MCR and SEER.

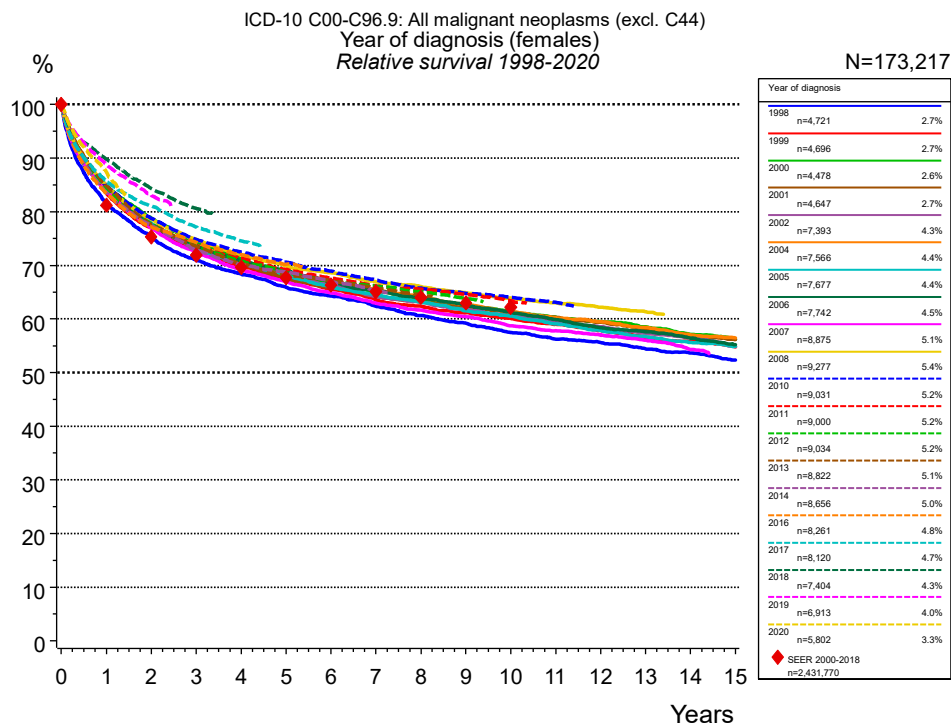
The presented survival curves are derived from clinical records with valid follow-up informations, which means that death certificate cases (DCO) cases are omitted from the analysis. With this one restriction, the MCR has provided population-based statistics since 1998, collecting data on all cancer cases in the region of southern Bavaria. Historical data of previous time periods can be heavily selected, therefore, univariate survival comparisons of the presented time periods must be carefully considered. Nonetheless, all calculable survival curves are depicted to facilitate the comparison of long time follow-up analyses of relative survival between particular cancers.

Years	Year of diagnosis													
	1998		1999		2000		2001		2002		2004		2005	
	n=4,756		n=4,711		n=4,696		n=4,846		n=8,253		n=8,485		n=8,300	
	obs. %	rel. %	obs. %	rel. %	obs. %	rel. %	obs. %	rel. %	obs. %	rel. %	obs. %	rel. %	obs. %	rel. %
0	100.0	100.0	100.0	100.0	100.0	100.0	100.0	100.0	100.0	100.0	100.0	100.0	100.0	100.0
1	75.7	78.4	76.1	78.6	78.8	81.3	79.0	81.4	79.4	82.0	79.3	81.7	78.8	81.1
2	65.9	70.4	66.3	70.7	69.2	73.6	69.5	73.8	69.9	74.3	70.1	74.2	69.7	73.8
3	60.3	66.3	60.3	66.3	63.4	69.5	63.9	69.9	64.5	70.7	64.5	70.2	64.3	70.0
4	56.3	63.9	56.1	63.5	59.4	67.1	59.7	67.2	60.5	68.3	60.7	68.0	60.0	67.2
5	52.9	61.9	52.7	61.5	55.7	64.8	56.4	65.5	57.3	66.6	57.4	66.2	57.0	65.7
6	49.9	60.3	49.6	59.7	52.6	63.1	53.4	63.9	54.0	64.7	54.6	64.8	53.9	64.1
7	47.0	58.4	47.2	58.6	50.1	61.9	50.8	62.6	51.3	63.5	51.7	63.2	51.4	63.1
8	44.7	57.3	44.6	57.2	47.6	60.6	48.3	61.4	48.8	62.3	49.1	61.9	49.0	62.0
9	42.1	55.7	42.3	55.9	45.5	59.9	45.8	60.1	46.2	61.0	46.8	61.0	46.7	61.1
10	39.8	54.3	40.0	54.7	43.1	58.6	43.6	59.1	43.9	60.0	44.8	60.3	44.3	59.9
11	37.5	52.9	37.9	53.5	41.1	57.6	41.4	58.0	41.9	59.2	42.5	59.2	42.0	58.8
12	35.9	52.2	36.2	52.8	38.8	56.4	39.5	57.2	39.8	58.4	40.3	58.1	39.9	57.8
13	34.0	51.2	34.2	51.8	37.0	55.6	37.1	55.8	37.9	57.6	38.1	56.9	37.7	56.7
14	31.9	49.8	32.6	51.1	35.1	54.7	35.1	54.8	35.9	56.7	35.8	55.6	35.8	55.9
15	30.3	48.9	31.2	50.9	33.3	53.9	33.5	54.2	33.8	55.5	34.2	55.1	33.7	54.7
Median	6.0		5.9		7.0		7.3		7.6		7.7		7.6	

cont'd	Year of diagnosis													
	2006		2007		2008		2010		2011		2012		2013	
	n=8,427		n=9,876		n=9,652		n=9,217		n=9,257		n=9,370		n=9,202	
Years	obs. %	rel. %	obs. %	rel. %	obs. %	rel. %	obs. %	rel. %	obs. %	rel. %	obs. %	rel. %	obs. %	rel. %
0	100.0	100.0	100.0	100.0	100.0	100.0	100.0	100.0	100.0	100.0	100.0	100.0	100.0	100.0
1	78.1	80.4	77.8	80.1	79.2	81.5	78.4	80.7	78.5	80.9	79.3	81.6	79.2	81.5
2	68.7	72.8	69.2	73.2	69.9	73.9	69.0	73.0	69.4	73.4	70.8	74.8	70.2	74.2
3	62.8	68.5	63.2	68.8	64.2	69.8	63.8	69.3	63.9	69.5	64.9	70.6	64.7	70.2
4	59.0	66.2	58.8	65.8	60.6	67.7	59.9	66.9	60.0	67.1	61.1	68.3	60.6	67.6
5	55.7	64.5	55.2	63.7	57.3	65.9	56.3	64.7	56.9	65.5	57.4	66.1	57.0	65.5
6	52.9	63.2	52.1	61.9	54.5	64.6	53.6	63.4	53.9	64.0	54.6	64.8	54.5	64.5
7	50.0	61.6	49.3	60.4	51.9	63.5	50.9	62.0	51.2	62.6	52.1	63.8	51.9	63.2
8	47.2	60.1	46.3	58.6	49.4	62.4	48.4	60.7	49.1	62.0	50.0	63.2	49.7	62.4
9	44.9	59.1	44.0	57.5	47.2	61.5	46.3	60.0	46.9	61.1	47.4	62.0		
10	42.6	58.0	41.8	56.5	45.0	60.8	44.3	59.3	44.2	59.6				
11	40.3	56.9	39.5	55.2	43.1	60.2	42.0	58.1						
12	38.0	55.7	37.5	54.3	40.8	59.2								
13	35.9	54.6	35.2	52.9	38.4	57.8								
14	34.0	53.9	32.9	51.3										
15	31.8	52.4												
Median	7.0		6.7		7.8		7.4		7.6		8.0		7.9	

cont'd	Year of diagnosis									
	2014		2016		2017		2018		2019	
	n=8,940		n=7,896		n=7,306		n=6,272		n=5,493	
Years	obs. %	rel. %	obs. %	rel. %	obs. %	rel. %	obs. %	rel. %	obs. %	rel. %
0	100.0	100.0	100.0	100.0	100.0	100.0	100.0	100.0	100.0	100.0
1	78.1	80.4	75.8	78.0	77.6	79.9	83.5	86.0	82.3	84.8
2	68.7	72.8	66.9	70.7	70.3	74.4	75.4	79.8	72.2	76.6
3	63.5	69.2	62.4	67.8	65.2	71.0	69.5	75.7		
4	59.5	66.6	58.7	65.5	60.7	68.1				
5	56.4	65.0	55.4	63.8						
6	53.4	63.5								
7	51.0	62.5								
Median	7.4									

**Table 1d.** Observed (obs.) and relative (rel.) survival of patients with all cancers (excl. C44) by year of diagnosis (males) for period 1998-2020 (N=175,205).



**Figure 1e.** Relative survival of patients with all cancers (excl. C44) by year of diagnosis (females). Included in the evaluation are 173,217 cases diagnosed between 1998 and 2020.

The survival results of the SEER program (Surveillance, Epidemiology, and End Results) of the American National Cancer Institute (NCI) are summarized as the period of diagnosis from 2000 to 2018, and are represented by colored diamonds in order to facilitate comparisons between MCR and SEER.

The presented survival curves are derived from clinical records with valid follow-up informations, which means that death certificate cases (DCO) cases are omitted from the analysis. With this one restriction, the MCR has provided population-based statistics since 1998, collecting data on all cancer cases in the region of southern Bavaria. Historical data of previous time periods can be heavily selected, therefore, univariate survival comparisons of the presented time periods must be carefully considered. Nonetheless, all calculable survival curves are depicted to facilitate the comparison of long time follow-up analyses of relative survival between particular cancers.

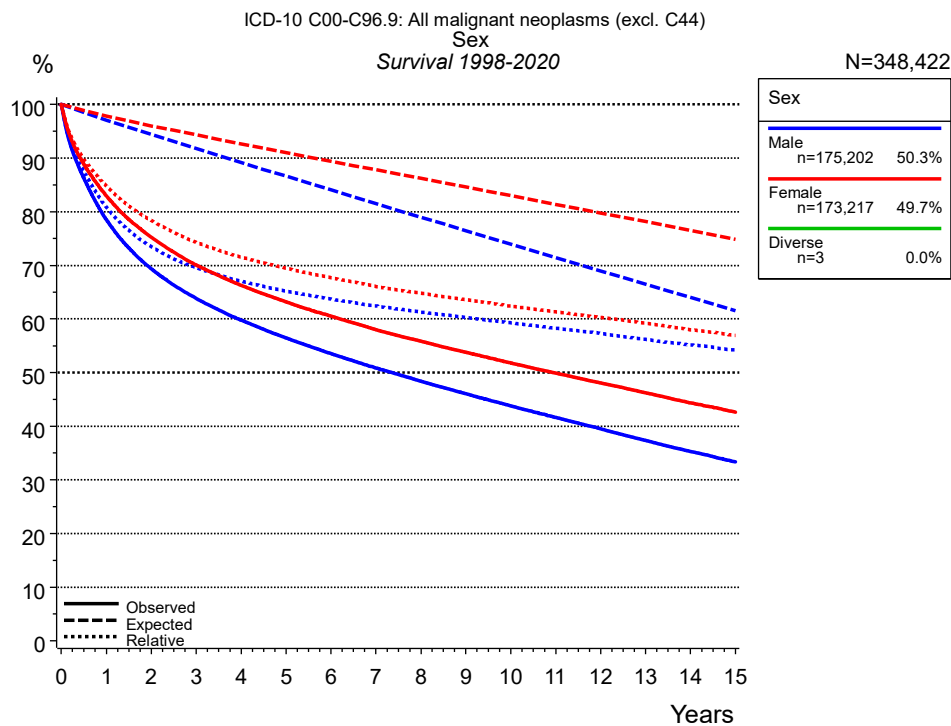
Years	Year of diagnosis													
	1998		1999		2000		2001		2002		2004		2005	
	obs. %	rel. %	obs. %	rel. %	obs. %	rel. %	obs. %	rel. %	obs. %	rel. %	obs. %	rel. %	obs. %	rel. %
0	100.0	100.0	100.0	100.0	100.0	100.0	100.0	100.0	100.0	100.0	100.0	100.0	100.0	100.0
1	79.5	81.6	81.4	83.6	82.9	85.0	82.7	84.6	82.8	84.9	82.8	84.7	82.3	84.3
2	71.7	75.2	73.5	77.0	75.4	78.8	74.3	77.5	74.3	77.6	74.6	77.8	74.6	77.8
3	66.4	71.0	68.1	72.7	69.7	74.3	69.1	73.4	68.8	73.3	69.3	73.6	69.0	73.4
4	62.7	68.3	64.2	69.8	65.6	71.2	65.4	70.6	65.0	70.6	65.4	70.7	65.0	70.4
5	59.3	65.9	60.8	67.4	61.7	68.3	61.4	67.5	61.8	68.4	62.5	68.9	61.7	68.1
6	56.7	64.3	58.0	65.5	59.3	66.8	58.9	65.8	58.8	66.3	59.8	67.1	58.7	65.9
7	54.0	62.4	55.4	63.6	56.7	65.1	56.6	64.3	56.0	64.2	57.2	65.4	56.3	64.5
8	51.4	60.6	53.4	62.4	54.6	63.8	54.6	63.1	54.0	63.2	55.1	64.1	54.1	63.1
9	49.3	59.2	51.3	61.1	52.5	62.5	52.8	62.1	51.8	61.7	52.8	62.6	51.7	61.5
10	46.9	57.5	49.6	60.1	50.6	61.4	51.2	61.3	49.9	60.6	50.8	61.4	49.9	60.5
11	45.1	56.2	47.8	59.0	48.8	60.4	49.4	60.3	48.0	59.5	48.9	60.2	47.7	59.1
12	43.6	55.6	46.0	57.9	47.2	59.5	47.7	59.4	46.2	58.5	47.4	59.5	45.8	57.9
13	41.8	54.4	44.1	56.5	45.6	58.5	45.8	58.1	44.4	57.4	45.5	58.4	44.0	56.7
14	40.4	53.7	42.7	55.9	43.5	57.1	44.0	56.9	42.8	56.5	43.6	57.0	42.2	55.6
15	38.5	52.3	41.1	54.8	42.0	56.2	42.5	56.1	40.7	54.9	42.2	56.5	40.7	54.9
Median	8.6		9.7		10.3		10.6		9.9		10.4		9.9	

cont'd	Year of diagnosis													
	2006		2007		2008		2010		2011		2012		2013	
	n=7,742		n=8,875		n=9,277		n=9,031		n=9,000		n=9,034		n=8,822	
Years	obs. %	rel. %	obs. %	rel. %	obs. %	rel. %	obs. %	rel. %	obs. %	rel. %	obs. %	rel. %	obs. %	rel. %
0	100.0	100.0	100.0	100.0	100.0	100.0	100.0	100.0	100.0	100.0	100.0	100.0	100.0	100.0
1	82.4	84.3	82.0	83.8	83.0	84.9	83.0	84.8	82.4	84.2	82.4	84.1	83.1	84.8
2	74.2	77.4	73.8	76.9	75.5	78.7	75.7	78.8	74.5	77.6	74.7	77.6	74.5	77.5
3	69.2	73.5	68.2	72.5	70.5	74.8	70.6	74.8	69.5	73.7	69.5	73.6	69.5	73.5
4	65.5	70.8	63.8	69.1	66.6	71.9	67.2	72.5	66.2	71.3	65.7	70.7	65.3	70.3
5	62.6	69.0	60.7	67.0	63.6	69.9	64.4	70.6	63.2	69.2	62.7	68.6	62.3	68.2
6	59.6	66.9	57.7	64.9	61.4	68.7	61.7	68.9	60.6	67.6	60.3	67.1	60.3	67.1
7	57.1	65.3	55.0	63.0	58.7	66.9	59.1	67.2	58.3	66.1	58.4	66.1	58.1	65.7
8	54.8	63.9	52.8	61.6	56.9	66.0	56.8	65.8	56.8	65.6	56.4	65.1	56.0	64.6
9	52.6	62.5	50.8	60.4	54.9	64.9	54.9	64.8	55.0	64.6	54.3	63.8		
10	50.5	61.3	48.4	58.7	53.0	63.9	53.3	64.1	52.9	63.4				
11	48.4	59.9	46.7	57.8	51.2	63.0	51.5	63.1						
12	46.2	58.4	45.2	57.0	49.6	62.2								
13	44.6	57.6	43.5	56.0	47.9	61.4								
14	42.7	56.4	41.3	54.3										
15	40.9	55.2												
Median	10.2		9.3		11.8									

cont'd	Year of diagnosis											
	2014		2016		2017		2018		2019		2020	
	n=8,656		n=8,261		n=8,120		n=7,404		n=6,913		n=5,802	
Years	obs. %	rel. %	obs. %	rel. %	obs. %	rel. %	obs. %	rel. %	obs. %	rel. %	obs. %	rel. %
0	100.0	100.0	100.0	100.0	100.0	100.0	100.0	100.0	100.0	100.0	100.0	100.0
1	81.8	83.6	81.7	83.4	84.0	85.7	88.2	89.9	87.1	88.8	85.7	87.4
2	74.5	77.4	74.2	77.1	78.0	81.0	81.2	84.3	80.1	83.0		
3	68.9	72.8	70.3	74.3	73.0	77.2	76.3	80.6				
4	65.2	70.2	67.0	72.0	69.3	74.5						
5	62.8	68.8	64.2	70.2								
6	60.1	67.0										
7	57.6	65.3										
Median												

**Table 1f.** Observed (obs.) and relative (rel.) survival of patients with all cancers (excl. C44) by year of diagnosis (females) for period 1998-2020 (N=173,217).

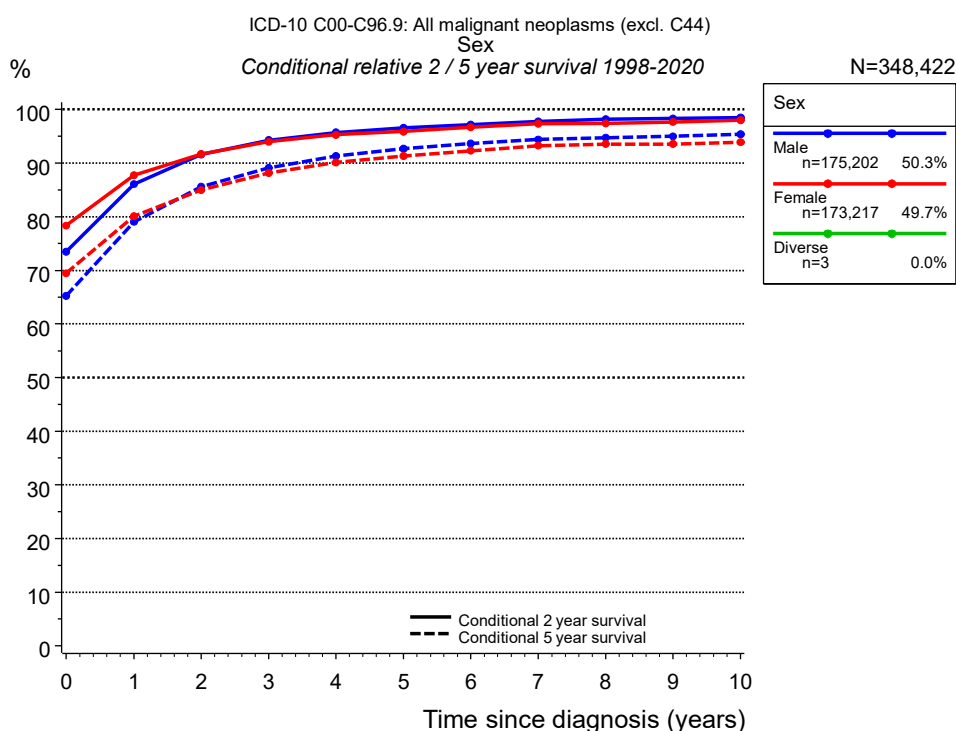




**Figure 2a.** Survival of patients with all cancers (excl. C44) by sex. Included in the evaluation are 348,422 cases diagnosed between 1998 and 2020. Subgroups with sample size <20 are omitted from the chart.

Years	Sex			
	Male n=175,202		Female n=173,217	
	obs. %	rel. %	obs. %	rel. %
0	100.0	100.0	100.0	100.0
1	78.6	80.9	83.0	84.8
2	69.4	73.5	75.2	78.3
3	63.8	69.5	70.0	74.3
4	59.8	67.0	66.3	71.5
5	56.5	65.2	63.2	69.4
6	53.6	63.7	60.5	67.7
7	50.9	62.4	58.0	66.1
8	48.4	61.3	55.9	64.8
9	46.1	60.3	53.8	63.6
10	43.8	59.3	51.8	62.4
11	41.6	58.3	49.9	61.3
12	39.5	57.3	48.1	60.3
13	37.4	56.2	46.2	59.2
14	35.3	55.2	44.3	58.0
15	33.4	54.2	42.6	56.9
Median	7.4		10.9	

**Table 2b.** Observed (obs.) and relative (rel.) survival of patients with all cancers (excl. C44) by sex for period 1998-2020 (N=348,422).

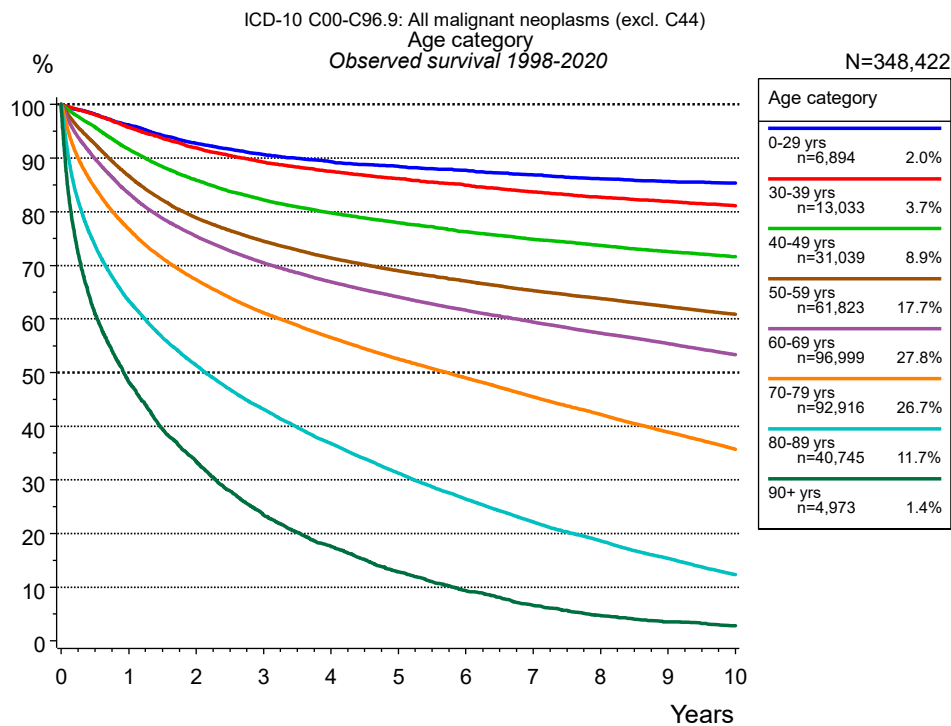


**Figure 2c.** Conditional relative 2 / 5-year survival of patients with all cancers (excl. C44) by sex. For 348,422 of 348,422 cases diagnosed between 1998 and 2020 valid data could be obtained for this item. Subgroups with sample size <20 are omitted from the chart.

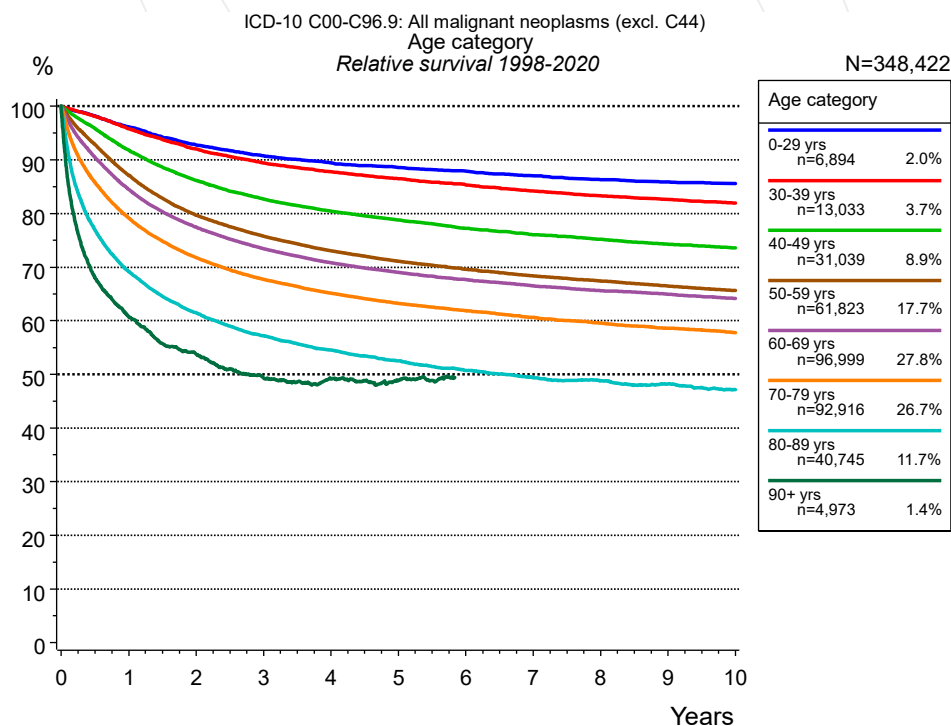
Sex									
Years	Male				Female			Diverse	
	n	Cond. surv. %		n	Cond. surv. %		n	Cond. surv. %	
		2 yrs	5 yrs		2 yrs	5 yrs		2 yrs	5 yrs
0	175,202	73.5	65.2	173,217	78.3	69.4	3		
1	133,345	86.1	79.0	138,425	87.7	80.1			
2	113,868	91.6	85.6	120,073	91.6	84.9			
3	100,203	94.3	89.1	105,790	94.0	88.2			
4	89,261	95.7	91.3	94,094	95.3	90.1			
5	79,611	96.6	92.7	83,940	95.9	91.3			
6	71,091	97.2	93.6	75,047	96.7	92.3			
7	63,236	97.8	94.4	66,854	97.3	93.2			
8	55,634	98.2	94.7	59,406	97.4	93.5			
9	48,444	98.3	95.0	52,216	97.6	93.6			
10	41,811	98.5	95.4	45,532	98.0	93.9			

**Table 2d.** Conditional relative 2 / 5-year survival of patients with all cancers (excl. C44) by sex for period 1998-2020 (N=348,422).

Conditional relative survival rates refer to the relative survival probability, in this case for 2 and 5 years after cancer diagnosis, compared to the age- and sex-matched population (=100 %) under the condition of being alive for a certain time period (x-axis in Figure 2a). The results illustrate to what extent the cancer induced mortality of particular subgroups declines in the subsequent years after detection of the malignancy. For instance, according to the presented survival statistics, patients in the subgroup sex="Male", who are alive at least 3 years after cancer diagnosis, the conditional relative 2-year survival rate is 94.3% (n=100,203).



**Figure 3a.** Observed survival of patients with all cancers (excl. C44) by age category. Included in the evaluation are 348,422 cases diagnosed between 1998 and 2020.

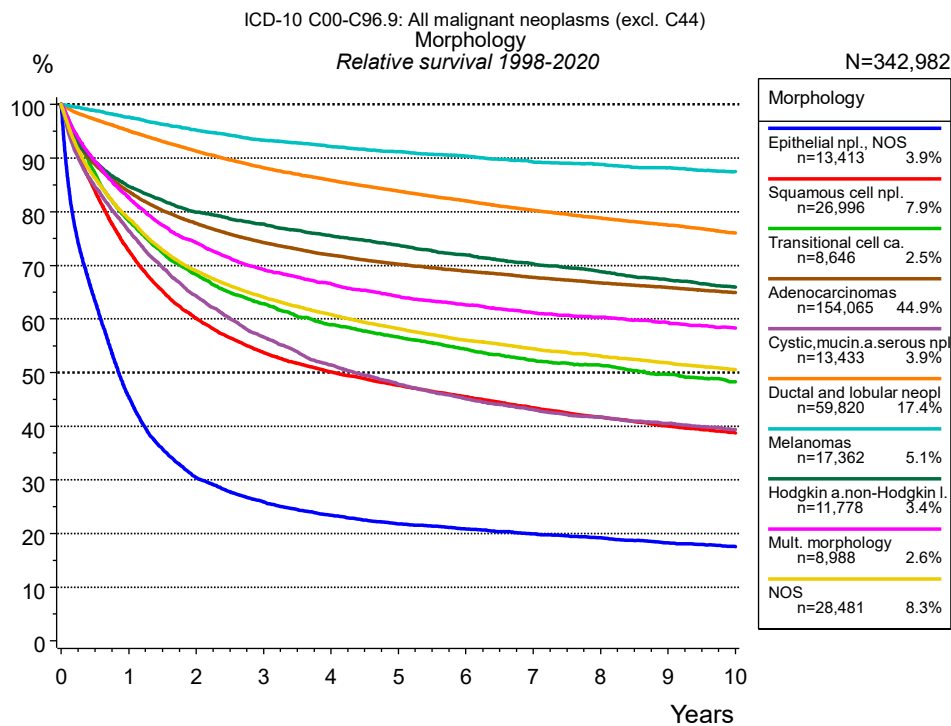


**Figure 3b.** Relative survival of patients with all cancers (excl. C44) by age category. Included in the evaluation are 348,422 cases diagnosed between 1998 and 2020.

Years	Age category													
	0-29 yrs n=6,894		30-39 yrs n=13,033		40-49 yrs n=31,039		50-59 yrs n=61,823		60-69 yrs n=96,999		70-79 yrs n=92,916		80-89 yrs n=40,745	
	obs. %	rel. %	obs. %	rel. %	obs. %	rel. %	obs. %	rel. %	obs. %	rel. %	obs. %	rel. %	obs. %	rel. %
0	100.0	100.0	100.0	100.0	100.0	100.0	100.0	100.0	100.0	100.0	100.0	100.0	100.0	100.0
1	96.1	96.2	95.7	95.8	91.6	91.8	86.7	87.1	83.4	84.5	76.7	79.2	63.4	69.2
2	92.7	92.8	91.9	92.0	85.9	86.2	78.8	79.7	75.4	77.4	67.3	71.8	51.4	61.5
3	90.6	90.7	89.2	89.4	82.2	82.7	74.5	75.7	70.5	73.4	61.2	67.7	43.1	57.2
4	89.4	89.5	87.5	87.8	79.8	80.4	71.4	73.0	66.9	70.8	56.5	65.1	36.8	54.6
5	88.5	88.6	86.2	86.5	78.0	78.8	69.0	71.1	64.1	69.1	52.5	63.3	31.3	52.5
6	87.7	87.9	84.9	85.4	76.2	77.3	67.0	69.6	61.7	67.7	49.0	61.9	26.4	50.7
7	86.8	87.1	83.7	84.2	74.8	76.1	65.3	68.3	59.4	66.5	45.5	60.6	22.1	49.4
8	86.1	86.3	82.7	83.3	73.7	75.2	63.8	67.4	57.3	65.6	42.2	59.5	18.6	48.8
9	85.6	85.9	81.9	82.6	72.6	74.3	62.3	66.5	55.4	64.9	38.9	58.6	15.3	48.2
10	85.3	85.6	81.1	81.9	71.6	73.6	60.9	65.6	53.4	64.2	35.7	57.8	12.3	47.2
Median							17.8		11.7		5.7		2.1	

Years	Age category <i>cont'd</i> 90+ yrs n=4,973	
	obs. %	rel. %
0	100.0	100.0
1	48.2	60.6
2	33.4	53.7
3	23.4	49.3
4	17.5	49.1
5	12.8	48.8
6	9.3	49.6
7	6.6	49.8
8	4.7	51.7
9	3.6	58.8
10	2.8	70.4
Median	0.9	

**Table 3c.** Observed (obs.) and relative (rel.) survival of patients with all cancers (excl. C44) by age category for period 1998-2020 (N=348,422).

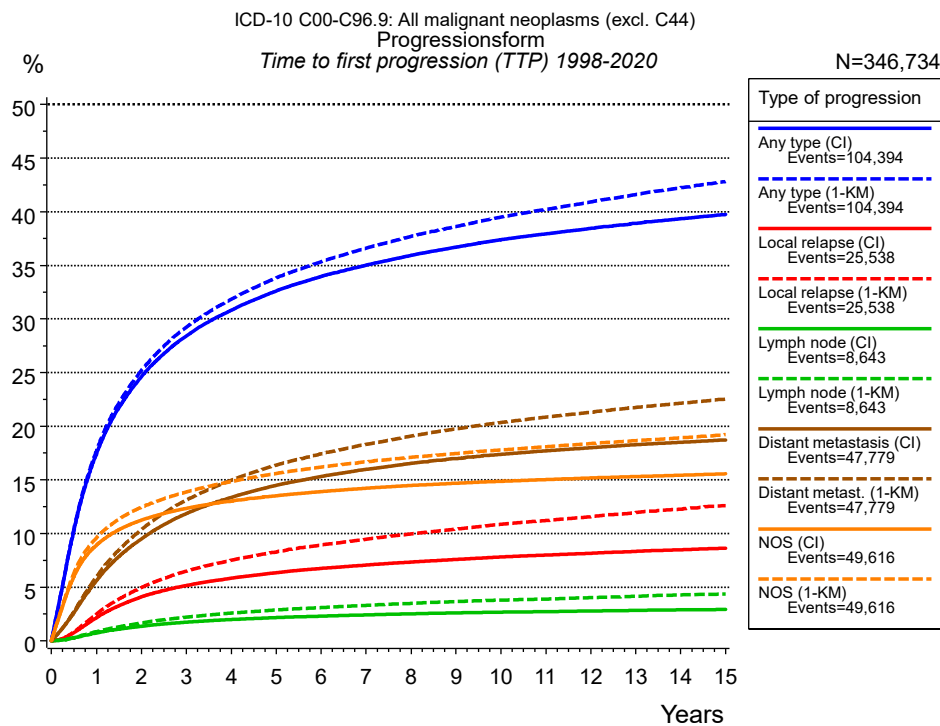


**Figure 4a.** Relative survival of patients with all cancers (excl. C44) by morphology. For 342,982 of 348,422 cases diagnosed between 1998 and 2020 valid data could be obtained for this item.

Morphology														
Years	Epithelial npl., NOS n=13,413		Squamous cell npl. n=26,996		Adenocarcinomas n=154,065		Cystic, mucin. a. serous npl. n=13,433		Ductal and lobular neoplasms n=59,820		Melanomas n=17,362		Hodgkin a. non-Hodgkin l. n=11,778	
	obs. %	rel. %	obs. %	rel. %	obs. %	rel. %	obs. %	rel. %	obs. %	rel. %	obs. %	rel. %	obs. %	rel. %
0	100.0	100.0	100.0	100.0	100.0	100.0	100.0	100.0	100.0	100.0	100.0	100.0	100.0	100.0
1	44.1	45.4	71.1	72.7	81.3	83.7	74.3	76.5	93.5	95.1	95.7	97.6	82.7	84.7
2	28.8	30.4	57.6	60.1	73.4	77.8	61.0	64.3	88.3	91.3	91.5	95.2	76.5	79.9
3	23.9	25.8	50.6	53.8	68.1	74.2	52.3	56.6	84.0	88.2	88.1	93.3	72.9	77.7
4	21.1	23.4	46.2	50.1	64.1	71.9	46.3	51.4	80.5	85.8	85.5	92.1	69.6	75.5
5	19.2	21.8	43.1	47.6	60.8	70.3	42.0	47.9	77.4	83.8	83.1	91.2	66.7	73.7
6	17.9	20.9	40.4	45.5	57.9	68.9	38.6	45.1	74.6	82.0	80.9	90.4	63.9	71.9
7	16.6	19.9	37.8	43.4	55.1	67.7	35.8	43.1	71.8	80.3	78.5	89.3	61.2	70.2
8	15.6	19.2	35.6	41.7	52.5	66.7	33.7	41.7	69.4	78.8	76.7	88.8	58.9	68.8
9	14.5	18.2	33.5	40.0	50.2	65.9	31.8	40.5	67.0	77.5	74.7	88.1	56.6	67.3
10	13.6	17.5	31.8	38.8	47.8	64.9	30.0	39.4	64.6	76.0	72.8	87.4	54.4	65.9
Median	0.8		3.1		9.1		3.4		17.1				12.3	

cont'd	Morphology			
	Mult. morphology n=8,988		NOS n=37,127	
	Years	obs. %	rel. %	obs. %
0	100.0	100.0	100.0	100.0
1	80.7	82.7	76.6	78.6
2	71.0	74.3	65.7	68.8
3	64.9	69.2	59.7	63.8
4	61.2	66.6	55.4	60.3
5	57.9	64.2	52.1	57.8
6	55.3	62.6	49.2	55.6
7	53.0	61.2	46.8	53.9
8	51.1	60.3	44.9	52.5
9	49.2	59.3	42.9	51.2
10	47.3	58.3	41.1	49.9
Median	8.6		5.7	

**Table 4b.** Observed (obs.) and relative (rel.) survival of patients with all cancers (excl. C44) by morphology for period 1998-2020 (N=342,982).



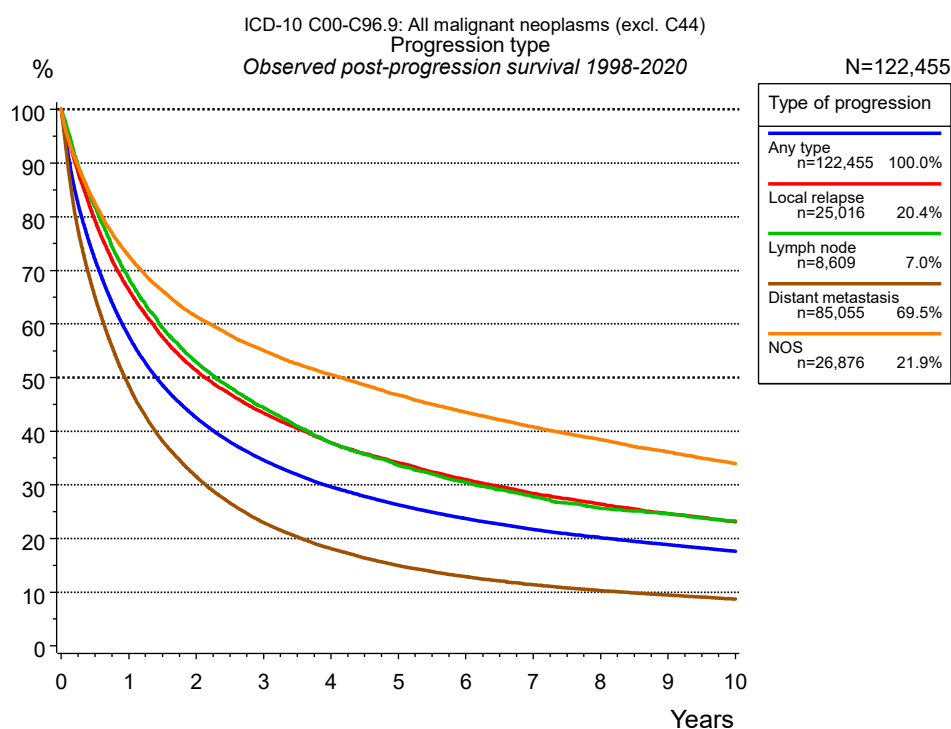
**Figure 5a.** Time to first progression of 346,734 patients with all cancers (excl. C44) diagnosed between 1998 and 2020 (in solid cancers M0 only) estimated by cumulative incidence function (CI, solid line) accounting for death as competing risk and by inverse Kaplan-Meier estimate (1-KM, dashed line). The frequency of events may be underestimated due to underreporting.

Type of progression							
	Any type (CI)	Any type (1-KM)	Local relapse (CI)	Local relapse (1-KM)	Lymph node (CI)	Lymph node (1-KM)	Distant metastasis (CI)
N	293,143	293,143	346,729	346,729	346,733	346,733	293,186
Events	103,501	103,501	25,148	25,148	8,551	8,551	47,337
compet.	46,117		156,094		167,491		85,399
Years	%	%	%	%	%	%	%
0	0.0	0.0	0.0	0.0	0.0	0.0	0.0
1	17.4	17.7	2.2	2.5	0.7	0.9	5.6
2	24.6	25.2	4.1	5.0	1.4	1.7	9.5
3	28.4	29.2	5.2	6.5	1.7	2.2	11.8
4	30.8	31.8	5.8	7.5	2.0	2.6	13.4
5	32.6	33.8	6.3	8.3	2.2	2.9	14.5
6	33.9	35.3	6.7	8.9	2.3	3.1	15.3
7	35.0	36.6	7.1	9.5	2.4	3.3	16.0
8	35.9	37.7	7.3	10.0	2.5	3.5	16.5
9	36.7	38.6	7.6	10.4	2.6	3.6	17.0
10	37.4	39.5	7.8	10.9	2.7	3.8	17.4
11	37.9	40.2	8.0	11.2	2.7	3.9	17.7
12	38.4	40.9	8.1	11.6	2.8	4.0	18.0
13	38.9	41.6	8.3	12.0	2.8	4.1	18.3
14	39.4	42.2	8.5	12.3	2.9	4.3	18.5
15	39.8	42.8	8.6	12.6	2.9	4.4	18.7

<i>cont'd</i>	Type of progression		
	Distant metast. (1-KM)	NOS (CI)	NOS (1-KM)
N	293,186	346,696	346,696
Events	47,337	49,312	49,312
compet.		134,606	
Years	%	%	%
0	0.0	0.0	0.0
1	6.0	8.9	9.6
2	10.4	11.2	12.4
3	13.1	12.3	13.9
4	15.0	13.0	14.8
5	16.4	13.5	15.6
6	17.4	13.9	16.2
7	18.3	14.2	16.7
8	19.1	14.5	17.1
9	19.8	14.7	17.5
10	20.3	14.9	17.8
11	20.8	15.0	18.1
12	21.3	15.2	18.4
13	21.8	15.3	18.7
14	22.2	15.4	18.9
15	22.5	15.6	19.2

**Table 5b.** Time to first progression of patients with all cancers (excl. C44) for period 1998-2020 (N=346,734), also showing the total of progression events (Events) and of deaths as competing risk (compet.).



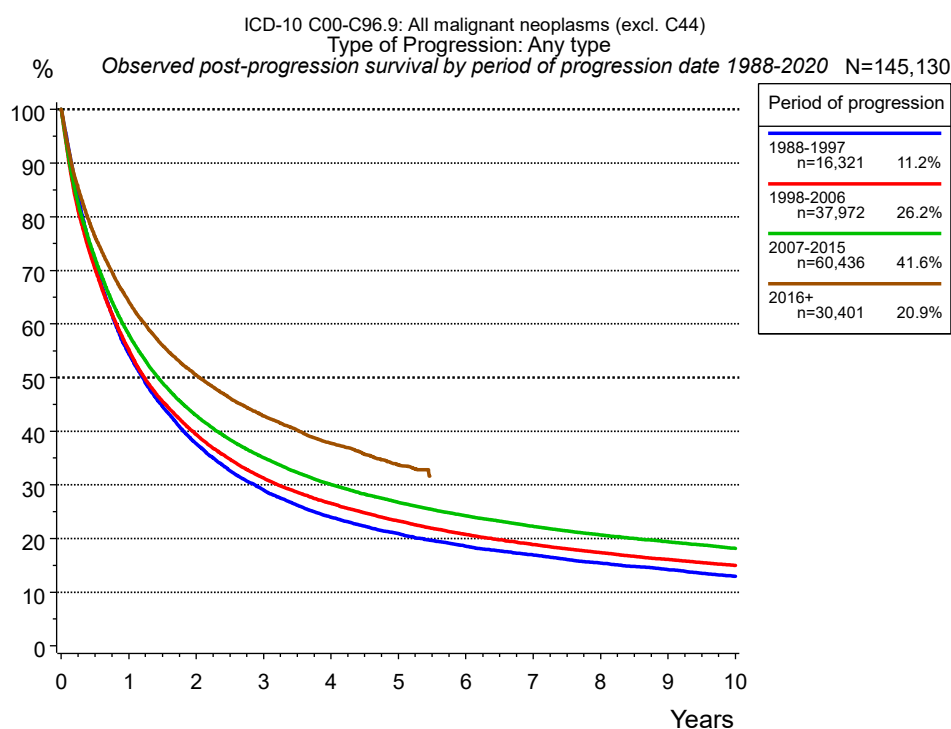


**Figure 5c.** Observed post-progression survival of 122,455 patients with all cancers (excl. C44) diagnosed between 1998 and 2020. These 122,455 patients with documented progression events during their course of disease represent 35.3 % of the totally 346,734 evaluated cases (incl. M1, n=53,591, 15.5 %). Patients with cancer relapse documented via death certificates only were excluded (n=35,530, 10.2 %). Multiple progression types on different sites are included in the evaluation even when not occurring synchronously. The NOS (not otherwise specified) class is included under the condition, that it is the one and only progression type during the course of disease.

Medical record documentation often lacks the linguistic severity to distinguish between local relapse, regional lymph node metastasis and distant spread in solid cancers. Frequently, the statement “not specified” is the only information in registries regarding relapse of the disease. The category “Any type” denotes all cases who suffered from at least one relapse during the course of disease (incl. primary M1-status). Although, the real number of relapsed patients is likely to be much higher. The accumulated percentage of patients with local relapse or distant metastasis exceeds the 100 % value because patients are potentially considered in more than one subgroup.

Years	Type of progression				
	Any type n=122,455 %	Local relapse n=25,016 %	Lymph node n=8,609 %	Distant metastasis n=85,055 %	NOS n=26,876 %
0	100.0	100.0	100.0	100.0	100.0
1	57.7	66.4	68.4	48.5	72.7
2	42.5	51.3	52.9	31.5	61.4
3	34.6	43.4	44.4	22.9	55.1
4	29.6	37.9	37.9	18.1	50.6
5	26.2	34.1	33.6	14.9	46.8
6	23.7	31.0	30.5	12.9	43.5
7	21.7	28.4	27.8	11.3	40.8
8	20.1	26.4	25.6	10.2	38.4
9	18.8	24.6	24.6	9.4	36.2
10	17.6	23.1	23.2	8.7	33.9

**Table 5d.** Observed post-progression survival of patients with all cancers (excl. C44) for period 1998-2020 (N=122,455).



**Figure 5e.** Observed post-progression (any type) survival of 145,130 patients with all cancers (excl. C44) diagnosed between 1988 and 2020 by period of progression.

Years	Period of progression			
	1988-1997 n=16,321 %	1998-2006 n=37,972 %	2007-2015 n=60,436 %	2016+ n=30,401 %
0	100.0	100.0	100.0	100.0
1	54.5	55.2	58.0	64.2
2	37.7	39.3	42.9	50.4
3	29.0	31.2	35.0	42.8
4	23.9	26.5	30.1	37.8
5	20.9	23.3	26.7	33.7
6	18.5	20.8	24.2	
7	16.9	18.8	22.3	
8	15.4	17.3	20.7	
9	14.2	16.1	19.4	
10	12.9	15.0	18.1	

**Table 5f.** Observed post-progression (any type) survival of patients with all cancers (excl. C44) for period 1988-2020 by period of progression (N=145,130).

## Shortcuts

MCR Munich Cancer Registry, Germany

NCI National Cancer Institute, USA

SEER Surveillance, Epidemiology, and End Results, USA

UICC Union for International Cancer Control, Geneva

DCO Death certificate only Death certificate provides the only notification to the registry.

NA Not available

NOS Not otherwise specified

OS Overall/Observed survival Overall/Observed survival (Kaplan-Meier estimate)

Date of entry: diagnosis  
Event: death from any cause

RS Relative survival Survival compared to “general population”, ratio of observed to expected survival (Ederer II method), reflecting cancer specific survival

AS Assembled survival Assembled chart of observed, expected, relative survival

CS Conditional survival Survival probability under the condition of surviving a given period of time

TTP Time to progression Time to first progression / relapse  
Date of entry: diagnosis  
Event: (progression / relapse): first local-, lymph node recurrence, distant metastasis or unspecified progression

1-KM 1 minus Kaplan-Meier estimator  
 (“inverse” Kaplan-Meier estimator)

CI Cumulative incidence  
Death as competing risk (according to Kalbfleisch und Prentice)

PPS Post-progression survival Survival since first progression / relapse (Kaplan-Meier estimate)  
Date of entry (progression / relapse): first local-, lymph node recurrence, distant metastasis or unspecified progression  
Event: death from any cause

## Recommended Citation

Munich Cancer Registry. Survival ICD-10 C00-C96.9: All cancers (excl. C44) [Internet]. 2022 [updated 2022 Apr 15; cited 2022 Jun 1]. Available from: <https://www.tumorregister-muenchen.de/en/facts/surv/sC0096E-ICD-10-C00-C96.9-All-cancers-excl.-C44-survival.pdf>

## Copyright

The content of the public web site provided by the Munich Cancer Registry is available worldwide and free of charge. All documents are free to download, utilize, copy, print-out and distribute, providing that the MCR is referenced.

## Disclaimer

The Munich Cancer Registry reserves the right to not be responsible for the topicality, correctness, completeness or quality of the information provided. Liability claims regarding damage caused by the use of any information provided, including any kind of information which is incomplete or incorrect, will therefore be rejected.