

# Munich Cancer Registry



- ▶ Incidence and Mortality
- ▶ Selection Matrix
- ▶ Homepage
- ▶ *Deutsch*

## ICD-10 C06: Mouth cancer NOS

### Survival

Year of diagnosis	1988-1997	1998-2020
Patients	144	353
Diseases	144	354
Cases evaluated	128	236
Creation date	04/15/2022	
Database export	12/20/2021	
Population	4.92 m	



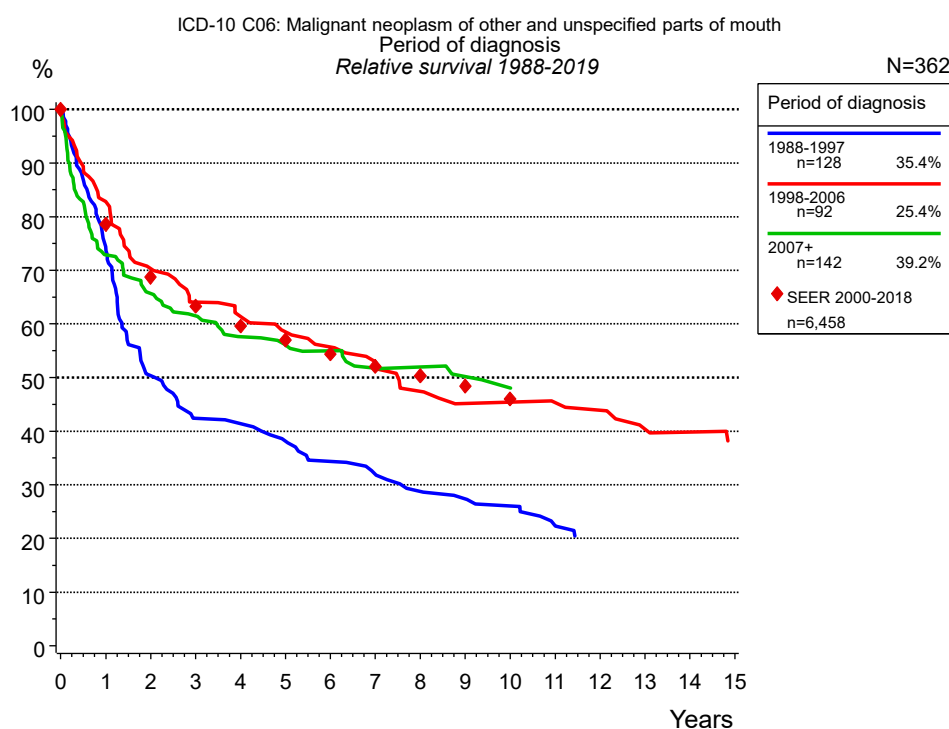
Munich Cancer Registry  
Cancer Registry Bavaria - Upper Bavaria Regional Center  
at Klinikum Grosshadern/IBE  
Marchioninstr. 15  
Munich, 81377  
Germany

<https://www.tumorregister-muenchen.de/en>

[https://www.tumorregister-muenchen.de/en/facts/surv/sC06\\_\\_E-ICD-10-C06-Mouth-cancer-NOS-survival.pdf](https://www.tumorregister-muenchen.de/en/facts/surv/sC06__E-ICD-10-C06-Mouth-cancer-NOS-survival.pdf)

**Index of figures and tables**

Fig./Tbl.	Page
1a Relative survival by period of diagnosis (chart)	3
1b Survival by period of diagnosis (table)	3
2a Survival by sex (chart)	4
2b Survival by sex (table)	4
3a Relative survival by age category (chart)	5
3b Survival by age category (table)	5
4a Relative survival by TNM staging (chart)	6
4b Survival by TNM staging (table)	6
5a Time to first progression (chart)	7
5b Time to first progression (table)	7
5c Observed post-progression survival (chart)	9
5d Observed post-progression survival (table)	9



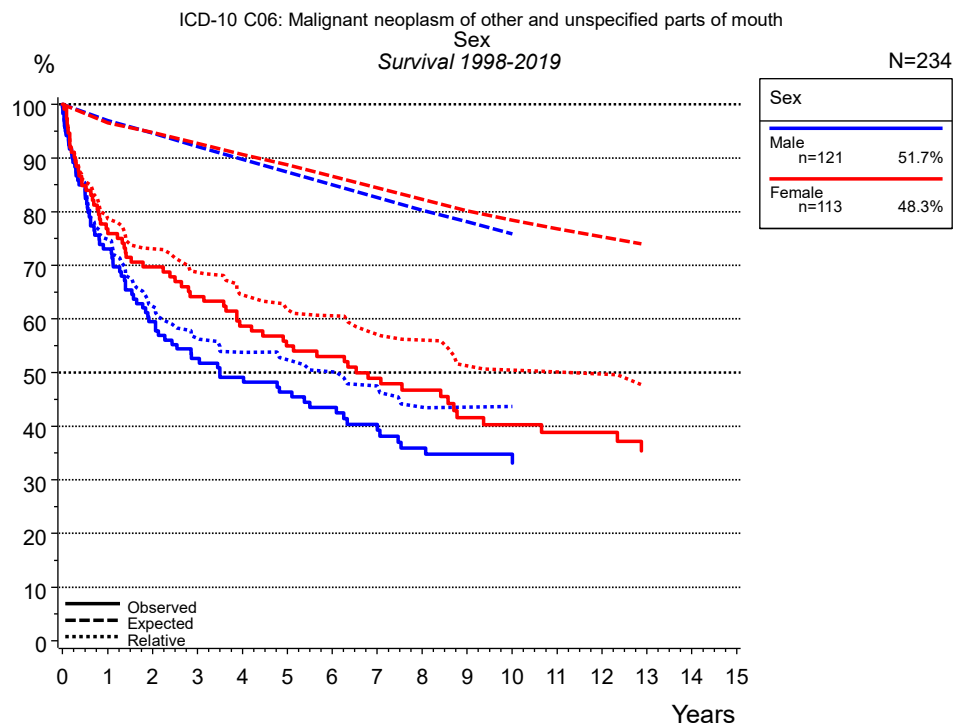
**Figure 1a.** Relative survival of patients with mouth cancer NOS by period of diagnosis. Included in the evaluation are 362 cases diagnosed between 1988 and 2019.

The survival results of the SEER program (Surveillance, Epidemiology, and End Results) of the American National Cancer Institute (NCI) are summarized as the period of diagnosis from 2000 to 2018, and are represented by colored diamonds in order to facilitate comparisons between MCR and SEER.

The presented survival curves are derived from clinical records with valid follow-up informations, which means that death certificate cases (DCO) cases are omitted from the analysis. With this one restriction, the MCR has provided population-based statistics since 1998, collecting data on all cancer cases in the region of southern Bavaria. Historical data of previous time periods can be heavily selected, therefore, univariate survival comparisons of the presented time periods must be carefully considered. Nonetheless, all calculable survival curves are depicted to facilitate the comparison of long time follow-up analyses of relative survival between particular cancers.

Years	Period of diagnosis					
	1988-1997 n=128		1998-2006 n=92		2007+ n=142	
	obs. %	rel. %	obs. %	rel. %	obs. %	rel. %
0	100.0	100.0	100.0	100.0	100.0	100.0
1	73.2	74.4	80.3	82.8	70.6	72.9
2	49.1	50.4	67.1	70.3	62.7	65.7
3	40.3	42.4	59.3	64.1	57.6	61.5
4	38.6	41.4	55.9	61.3	52.3	57.6
5	35.4	38.1	51.4	58.5	50.0	56.1
6	31.4	34.3	48.0	55.7	48.3	54.9
7	29.0	32.0	44.5	52.9	44.6	51.7
8	25.8	28.7	38.8	47.5	43.6	52.0
9	24.2	27.4	35.2	45.1	40.9	50.2
10	22.5	26.0	35.2	45.4	39.4	48.1
11	19.3	22.4	34.0	45.3		
12			32.8	43.9		
13			29.2	40.4		
14			28.0	39.9		
15			25.5	37.1		
Median	1.9		5.5		5.0	

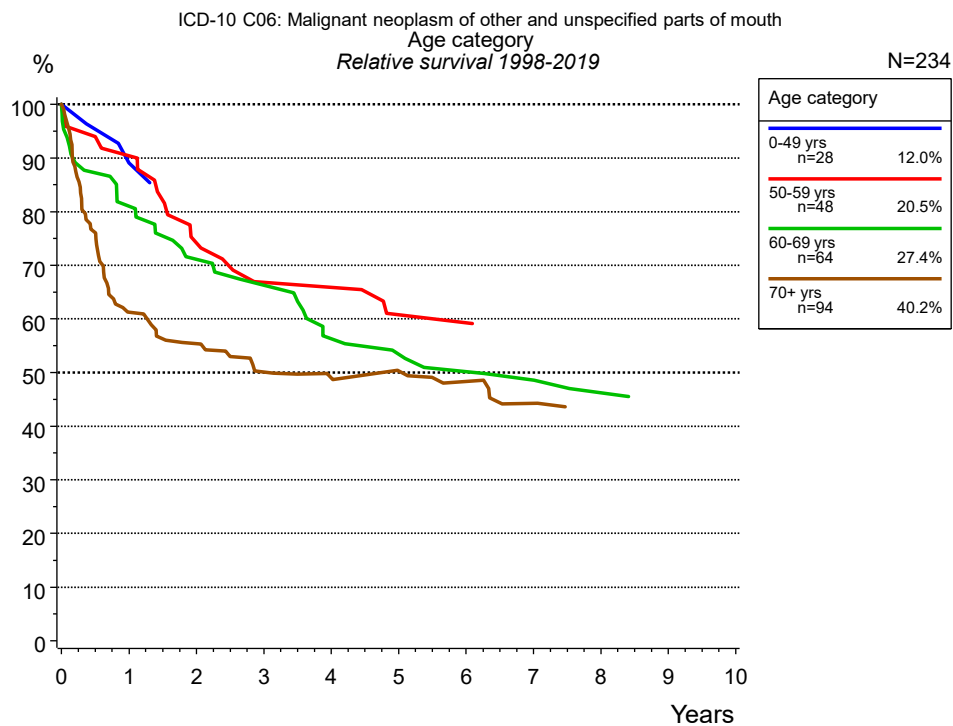
**Table 1b.** Observed (obs.) and relative (rel.) survival of patients with mouth cancer NOS by period of diagnosis for period 1988-2019 (N=362).



**Figure 2a.** Survival of patients with mouth cancer NOS by sex. Included in the evaluation are 234 cases diagnosed between 1998 and 2019.

Years	Sex			
	Male n=121		Female n=113	
	obs. %	rel. %	obs. %	rel. %
0	100.0	100.0	100.0	100.0
1	73.1	74.8	75.9	78.6
2	59.5	62.3	69.6	73.1
3	52.6	56.4	64.2	68.7
4	49.1	53.8	58.7	64.5
5	46.4	52.4	54.9	61.8
6	43.5	50.1	53.0	60.6
7	40.4	47.5	48.9	57.1
8	35.9	43.5	46.8	56.1
9	34.8	43.5	41.6	51.2
10	34.8	43.7	40.3	50.5
11			38.9	50.1
12			38.9	49.7
Median	3.5		6.5	

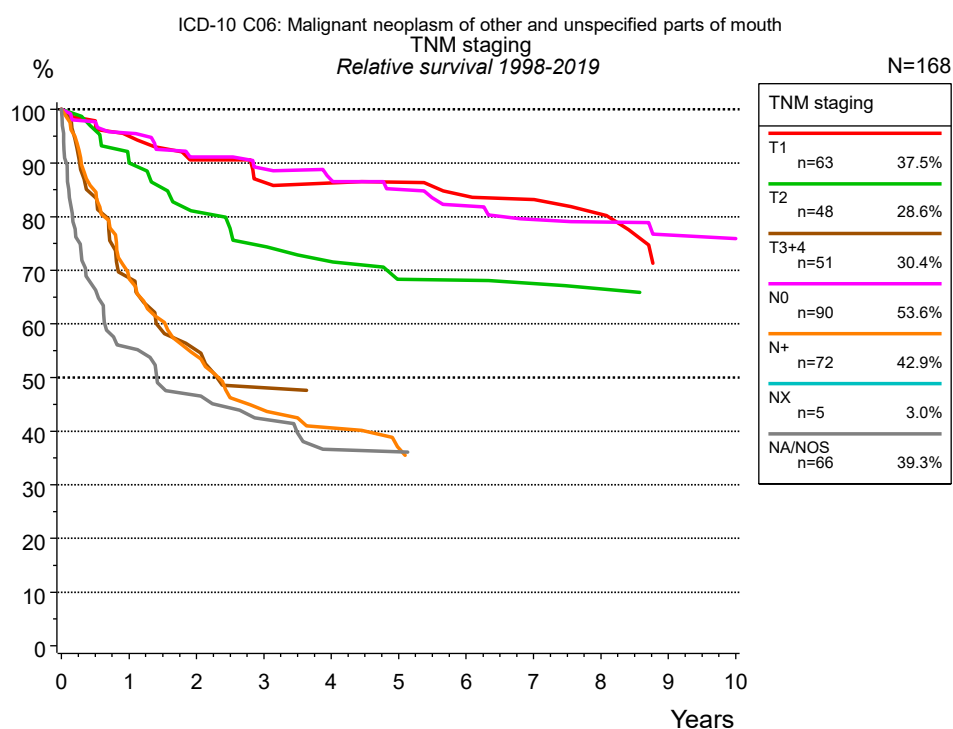
**Table 2b.** Observed (obs.) and relative (rel.) survival of patients with mouth cancer NOS by sex for period 1998-2019 (N=234).



**Figure 3a.** Relative survival of patients with mouth cancer NOS by age category. Included in the evaluation are 234 cases diagnosed between 1998 and 2019.

Years	Age category							
	0-49 yrs n=28		50-59 yrs n=48		60-69 yrs n=64		70+ yrs n=94	
	obs. %	rel. %	obs. %	rel. %	obs. %	rel. %	obs. %	rel. %
0	100.0	100.0	100.0	100.0	100.0	100.0	100.0	100.0
1	88.9	89.0	91.6	90.4	81.0	81.0	57.2	61.2
2	85.2	84.8	74.5	74.2	69.9	71.1	49.6	55.3
3	85.2	84.1	65.9	66.8	65.1	66.3	42.1	50.1
4	85.2	83.3	65.9	65.9	53.9	56.3	38.9	49.0
5			59.3	60.8	50.6	53.4	36.7	50.3
6			59.3	59.3	47.2	50.2	33.3	48.3
7					45.4	48.6	28.5	44.2
8					41.9	46.2		
9					39.9	45.6		
Median					5.1		1.8	

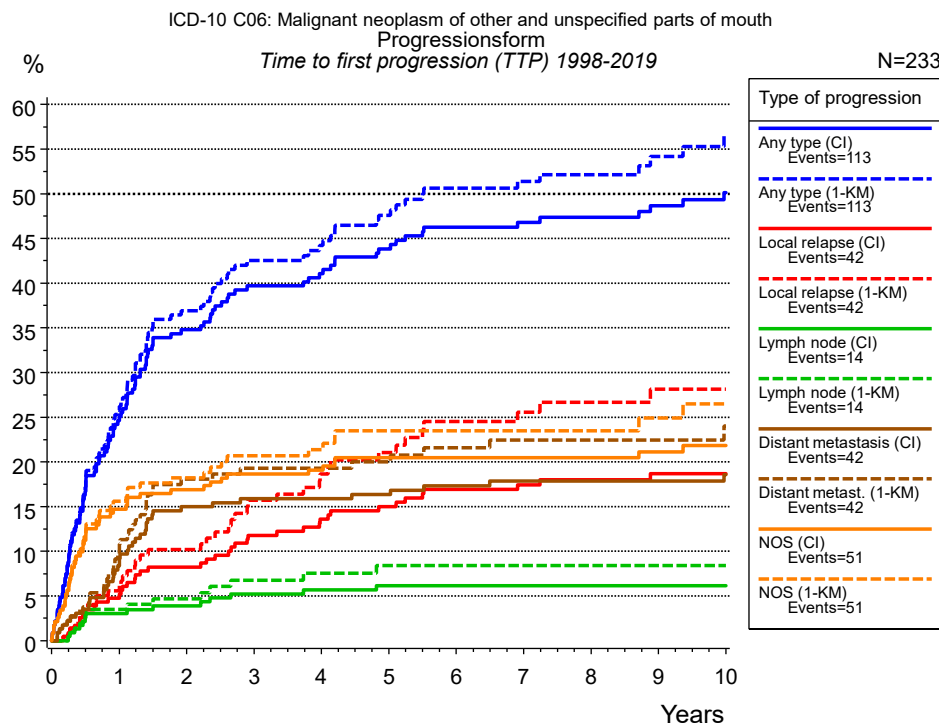
**Table 3b.** Observed (obs.) and relative (rel.) survival of patients with mouth cancer NOS by age category for period 1998-2019 (N=234).



**Figure 4a.** Relative survival of patients with mouth cancer NOS by TNM staging. For 172 of 234 cases diagnosed between 1998 and 2019 valid data could be obtained for this item. For a total of 168 cases an evaluable classification was established. The accumulated percentage exceeds the 100 % value because patients are potentially considered in more than one subgroup. The grey line represents the subgroup of 66 patients with missing values regarding TNM staging (28.2 % of 234 patients, the percent values of all other categories are related to n=168). Subgroups with sample size <20 are omitted from the chart.

Years	TNM staging											
	T1 n=63		T2 n=48		T3+4 n=51		N0 n=90		N+ n=72		NA/NOS n=66	
	obs. %	rel. %	obs. %	rel. %	obs. %	rel. %	obs. %	rel. %	obs. %	rel. %	obs. %	rel. %
0	100.0	100.0	100.0	100.0	100.0	100.0	100.0	100.0	100.0	100.0	100.0	100.0
1	93.5	95.0	87.5	90.0	68.3	68.6	94.3	95.6	66.4	68.3	53.8	55.6
2	86.9	90.6	77.0	80.9	54.2	55.1	87.5	91.1	52.2	54.1	44.6	46.7
3	81.8	86.4	70.6	74.4	46.2	48.1	84.1	88.9	42.0	43.9	38.5	42.2
4	80.1	86.3	66.3	71.6			80.5	86.8	37.5	40.6	32.3	36.6
5	78.4	86.4	59.7	68.3			76.9	85.1	32.8	36.9	32.3	36.2
6	74.6	83.9	59.7	68.1			72.9	82.0	31.3	34.8		
7	72.8	83.2	57.2	67.5			68.7	79.4				
8	68.4	80.5	54.6	66.5			67.1	79.0				
9							63.4	76.6				
10							63.4	75.9				
Median					2.3				2.1		1.4	

**Table 4b.** Observed (obs.) and relative (rel.) survival of patients with mouth cancer NOS by TNM staging for period 1998-2019 (N=168).



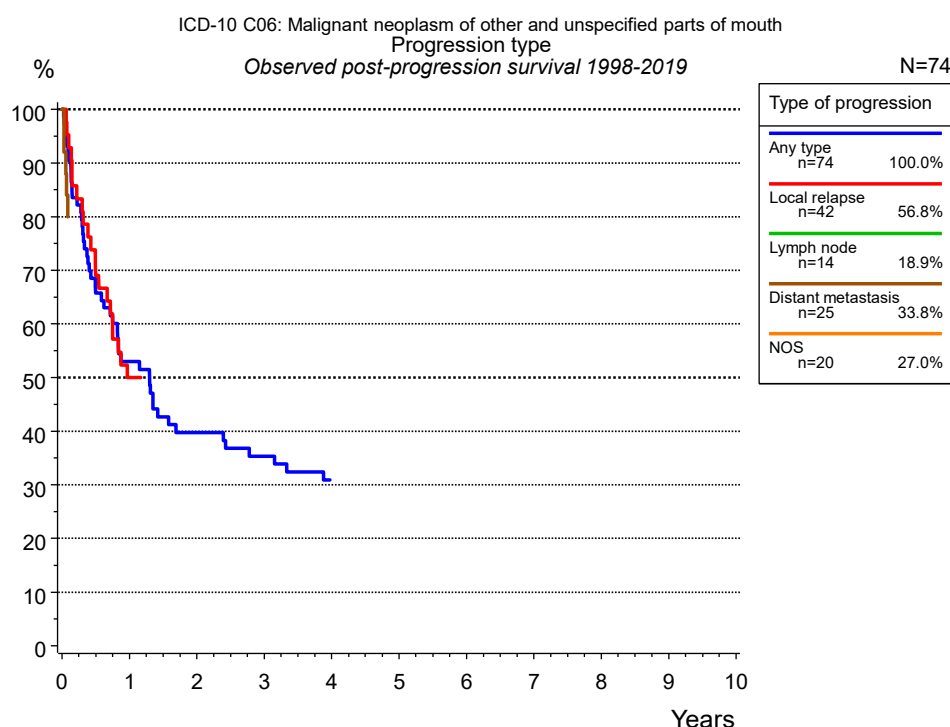
**Figure 5a.** Time to first progression of 233 patients with mouth cancer NOS diagnosed between 1998 and 2019 (in solid cancers M0 only) estimated by cumulative incidence function (CI, solid line) accounting for death as competing risk and by inverse Kaplan-Meier estimate (1-KM, dashed line). The frequency of events may be underestimated due to underreporting.

		Type of progression					
	Any type (CI)	Any type (1-KM)	Local relapse (CI)	Local relapse (1-KM)	Lymph node (CI)	Lymph node (1-KM)	Distant metastasis (CI)
N	229	229	233	233	233	233	229
Events	110	110	41	41	14	14	41
compet.	46		110		126		96
Years	%	%	%	%	%	%	%
0	0.0	0.0	0.0	0.0	0.0	0.0	0.0
1	24.6	25.8	4.8	5.6	3.0	3.5	9.2
2	34.8	36.9	8.3	10.2	3.9	4.7	15.0
3	39.7	42.6	11.8	15.7	5.2	6.8	15.9
4	41.1	44.2	13.6	18.7	5.7	7.6	15.9
5	43.8	47.6	15.0	21.0	6.1	8.4	16.3
6	46.3	50.6	16.9	24.5	6.1	8.4	17.3
7	46.8	51.4	17.5	25.6	6.1	8.4	17.8
8	47.4	52.2	18.0	26.7	6.1	8.4	17.8
9	48.7	54.2	18.7	28.1	6.1	8.4	17.8
10	50.1	56.4	18.7	28.1	6.1	8.4	18.6

<i>cont'd</i>	Type of progression		
	Distant metast. (1- KM)	NOS (CI)	NOS (1-KM)
N	229	233	233
Events	41	49	49
compet.		96	
Years	%	%	%
0	0.0	0.0	0.0
1	10.8	14.7	15.6
2	18.1	16.9	18.2
3	19.3	18.6	20.7
4	19.3	19.1	21.4
5	20.0	20.5	23.5
6	21.6	20.5	23.5
7	22.5	20.5	23.5
8	22.5	20.5	23.5
9	22.5	21.1	24.9
10	24.0	21.8	26.5

**Table 5b.** Time to first progression of patients with mouth cancer NOS for period 1998-2019 (N=233), also showing the total of progression events (Events) and of deaths as competing risk (compet.).





**Figure 5c.** Observed post-progression survival of 74 patients with mouth cancer NOS diagnosed between 1998 and 2019. These 74 patients with documented progression events during their course of disease represent 31.8 % of the totally 233 evaluated cases (incl. M1, n=4, 1.7 %). Patients with cancer relapse documented via death certificates only were excluded (n=43, 18.5 %). Multiple progression types on different sites are included in the evaluation even when not occurring synchronously. The NOS (not otherwise specified) class is included under the condition, that it is the one and only progression type during the course of disease. Subgroups with sample size <20 are omitted from the chart.

Medical record documentation often lacks the linguistic severity to distinguish between local relapse, regional lymph node metastasis and distant spread in solid cancers. Frequently, the statement “not specified” is the only information in registries regarding relapse of the disease. The category “Any type” denotes all cases who suffered from at least one relapse during the course of disease (incl. primary M1-status). Although, the real number of relapsed patients is likely to be much higher. The accumulated percentage of patients with local relapse or distant metastasis exceeds the 100 % value because patients are potentially considered in more than one subgroup.

Years	Type of progression			
	Any type n=74 %	Local relapse n=42 %	Distant metastasis n=25 %	NOS n=20 %
0	100.0	100.0	100.0	100.0
1	52.9	50.0		
2	39.7			
3	35.3			
4	30.9			

**Table 5d.** Observed post-progression survival of patients with mouth cancer NOS for period 1998-2019 (N=74).

## Shortcuts

MCR Munich Cancer Registry, Germany

NCI National Cancer Institute, USA

SEER Surveillance, Epidemiology, and End Results, USA

UICC Union for International Cancer Control, Geneva

DCO Death certificate only Death certificate provides the only notification to the registry.

NA Not available

NOS Not otherwise specified

OS Overall/Observed survival Overall/Observed survival (Kaplan-Meier estimate)

Date of entry: diagnosis  
Event: death from any cause

RS Relative survival Survival compared to “general population”, ratio of observed to expected survival (Ederer II method), reflecting cancer specific survival

AS Assembled survival Assembled chart of observed, expected, relative survival

CS Conditional survival Survival probability under the condition of surviving a given period of time

TTP Time to progression Time to first progression / relapse  
Date of entry: diagnosis  
Event: (progression / relapse): first local-, lymph node recurrence, distant metastasis or unspecified progression

1-KM 1 minus Kaplan-Meier estimator  
 (“inverse” Kaplan-Meier estimator)

CI Cumulative incidence  
Death as competing risk (according to Kalbfleisch und Prentice)

PPS Post-progression survival Survival since first progression / relapse (Kaplan-Meier estimate)  
Date of entry (progression / relapse): first local-, lymph node recurrence, distant metastasis or unspecified progression  
Event: death from any cause

## Recommended Citation

Munich Cancer Registry. Survival ICD-10 C06: Mouth cancer NOS [Internet]. 2022 [updated 2022 Apr 15; cited 2022 Jun 1]. Available from: [https://www.tumorregister-muenchen.de/en/facts/surv/sC06\\_\\_E-ICD-10-C06-Mouth-cancer-NOS-survival.pdf](https://www.tumorregister-muenchen.de/en/facts/surv/sC06__E-ICD-10-C06-Mouth-cancer-NOS-survival.pdf)

## Copyright

The content of the public web site provided by the Munich Cancer Registry is available worldwide and free of charge. All documents are free to download, utilize, copy, print-out and distribute, providing that the MCR is referenced.

## Disclaimer

The Munich Cancer Registry reserves the right to not be responsible for the topicality, correctness, completeness or quality of the information provided. Liability claims regarding damage caused by the use of any information provided, including any kind of information which is incomplete or incorrect, will therefore be rejected.