

Munich Cancer Registry



- ▶ Incidence and Mortality
- ▶ Selection Matrix
- ▶ Homepage
- ▶ *Deutsch*

ICD-10 C33, C34: Non-small cell LC

Survival

Year of diagnosis	1988-1997	1998-2016
Patients	3,543	23,729
Diseases	3,561	23,966
Cases evaluated	3,170	18,922
Creation date	08/22/2018	
Export date	08/09/2018	
Population	4.81 m	



Munich Cancer Registry
Cancer Registry Bavaria - Upper Bavaria Regional Center
at Klinikum Grosshadern/IBE
Marchioninstr. 15
Munich, 81377
Germany

<https://www.tumorregister-muenchen.de/en>

https://www.tumorregister-muenchen.de/en/facts/surv/sC34n_E-ICD-10-C33-C34-Non-small-cell-LC-survival.pdf

Index of figures and tables

Fig./Tbl.		Page
1a	Relative survival by period of diagnosis (chart)	3
1b	Survival by period of diagnosis (table)	3
2a	Survival by sex (chart)	4
2b	Survival by sex (table)	4
3a	Observed survival by age category (chart)	5
3b	Relative survival by age category (chart)	5
3c	Survival by age category (table)	6
4a	Relative survival by UICC 1988+ (chart)	7
4b	Survival by UICC 1988+ (table)	7
4c	Relative survival by UICC 1998+ (chart)	8
4d	Survival by UICC 1998+ (table)	8
4e	Conditional survival by UICC (chart)	9
4f	Conditional survival by UICC (table)	9
4g	Relative survival by TNM staging 1988+ (chart)	10
4h	Survival by TNM staging 1988+ (table)	10
4i	Relative survival by TNM staging 1998+ (chart)	12
4j	Survival by TNM staging 1998+ (table)	12
5a	Time to first progression (chart)	14
5b	Time to first progression (table)	14
5c	Observed post-progression survival (chart)	16
5d	Observed post-progression survival (table)	16
5e	Observed post-progression survival by period of progression (chart)	17
5f	Observed post-progression survival by period of progression (table)	17

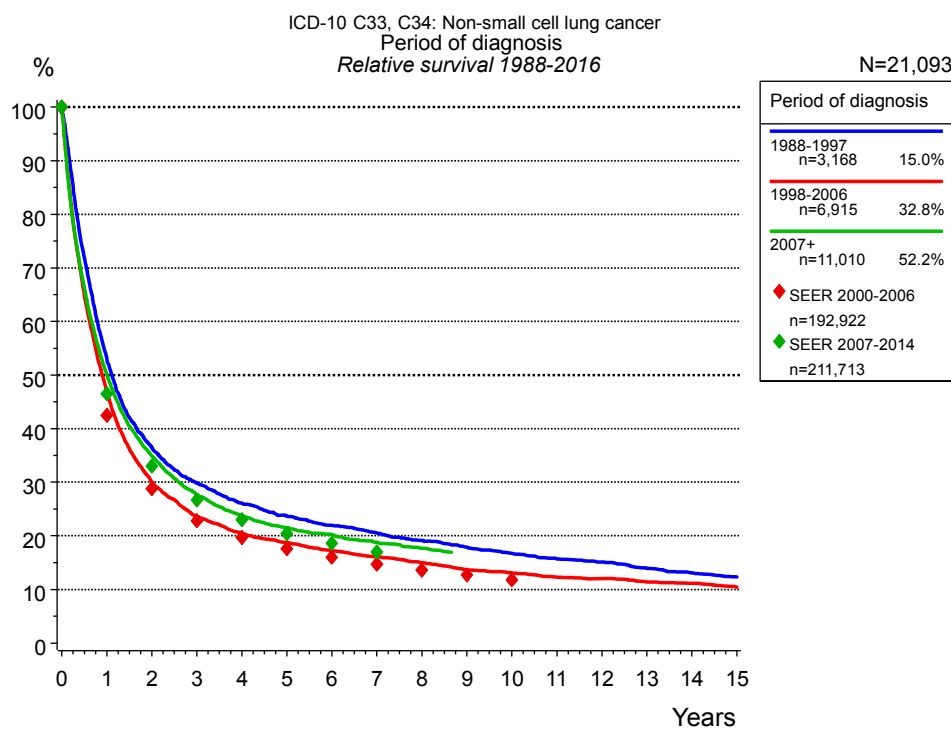


Figure 1a. Relative survival of patients with non-small cell LC by period of diagnosis. Included in the evaluation are 21,093 cases diagnosed between 1988 and 2016.

The survival results of the SEER program (Surveillance, Epidemiology, and End Results) of the American National Cancer Institute (NCI) are summarized as the period of diagnosis from 2000 to 2014, and are represented by colored diamonds in order to facilitate comparisons between MCR and SEER.

The presented survival curves are derived from clinical records with valid follow-up informations, which means that death certificate cases (DCO) cases are omitted from the analysis. With this one restriction, the MCR has provided population-based statistics since 1998, collecting data on all cancer cases in the region of southern Bavaria. Historical data of previous time periods can be heavily selected, therefore, univariate survival comparisons of the presented time periods must be carefully considered. Nonetheless, all calculable survival curves are depicted to facilitate the comparison of long time follow-up analyses of relative survival between particular cancers.

Years	Period of diagnosis					
	1988-1997		1998-2006		2007+	
	n=3,168		n=6,915		n=11,010	
	obs. %	rel. %	obs. %	rel. %	obs. %	rel. %
0	100.0	100.0	100.0	100.0	100.0	100.0
1	51.9	53.2	45.8	47.0	48.9	50.1
2	34.8	36.5	28.6	30.0	33.4	35.0
3	27.8	29.8	22.1	23.6	25.9	27.7
4	23.8	26.1	18.7	20.5	21.8	23.8
5	21.1	23.7	16.7	18.7	19.2	21.5
6	19.1	21.9	15.0	17.2	17.7	20.3
7	17.4	20.5	13.7	16.1	16.0	18.8
8	15.9	19.1	12.5	15.0	14.8	17.7
9	14.5	17.9	11.1	13.6		
10	13.2	16.7	10.3	13.1		
11	12.1	15.7	9.4	12.3		
12	11.4	15.1	9.0	12.0		
13	10.2	13.9	8.3	11.4		
14	9.4	13.1	7.9	11.1		
15	8.6	12.3	7.2	10.4		

Table 1b. Observed (obs.) and relative (rel.) survival of patients with non-small cell LC by period of diagnosis for period 1988-2016 (N=21,093).

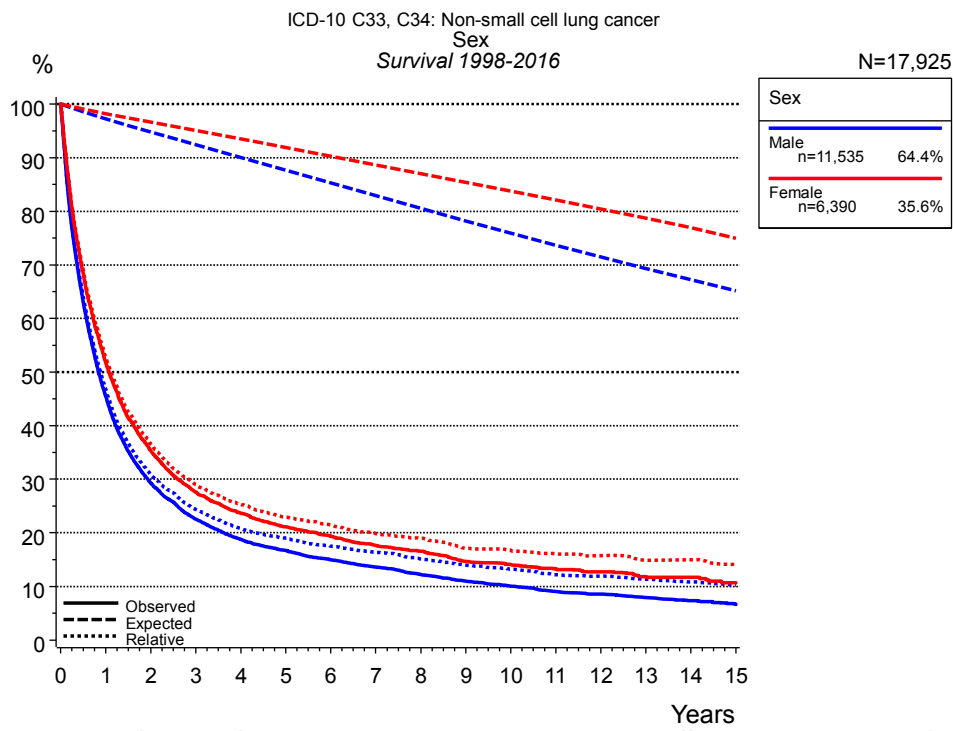


Figure 2a. Survival of patients with non-small cell LC by sex. Included in the evaluation are 17,925 cases diagnosed between 1998 and 2016.

Years	Sex			
	Male n=11,535		Female n=6,390	
	obs. %	rel. %	obs. %	rel. %
0	100.0	100.0	100.0	100.0
1	45.5	46.8	51.7	52.7
2	29.3	30.9	35.3	36.5
3	22.5	24.4	27.6	29.0
4	18.8	20.8	23.6	25.3
5	16.7	19.0	21.1	22.9
6	15.0	17.5	19.4	21.4
7	13.6	16.4	17.6	19.9
8	12.2	15.1	16.5	19.0
9	10.9	14.0	14.6	17.1
10	10.0	13.2	14.1	16.7
11	9.0	12.2	13.2	16.1
12	8.6	11.9	12.7	15.7
13	7.9	11.4	11.8	14.9
14	7.3	10.8	11.7	15.0
15	6.6	10.1	10.7	14.1

Table 2b. Observed (obs.) and relative (rel.) survival of patients with non-small cell LC by sex for period 1998-2016 (N=17,925).

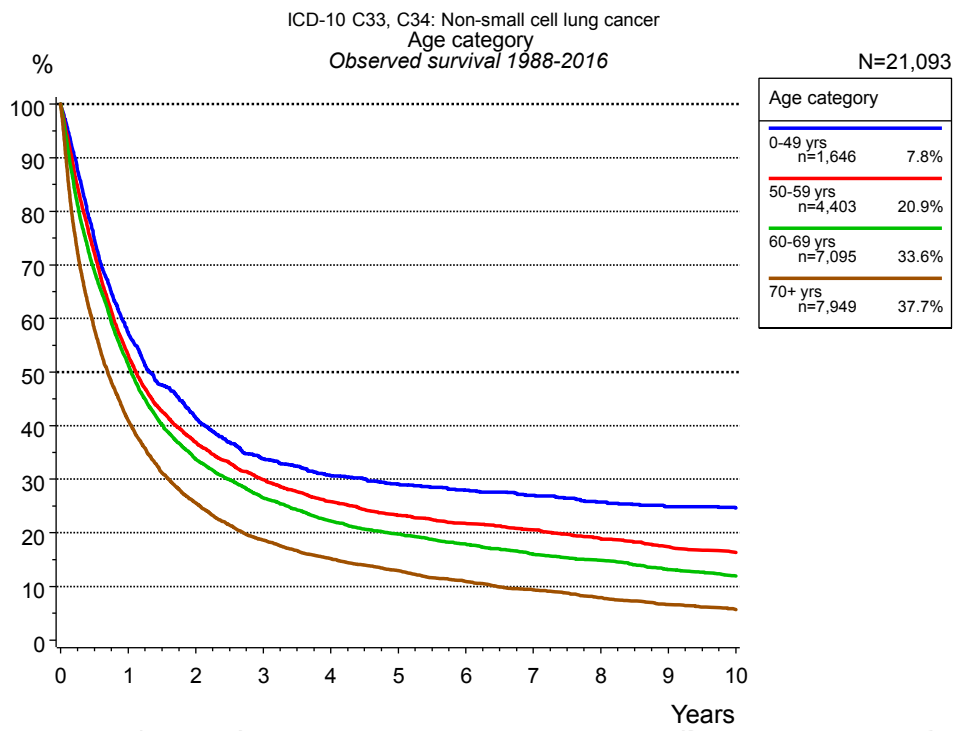


Figure 3a. Observed survival of patients with non-small cell LC by age category. Included in the evaluation are 21,093 cases diagnosed between 1988 and 2016.

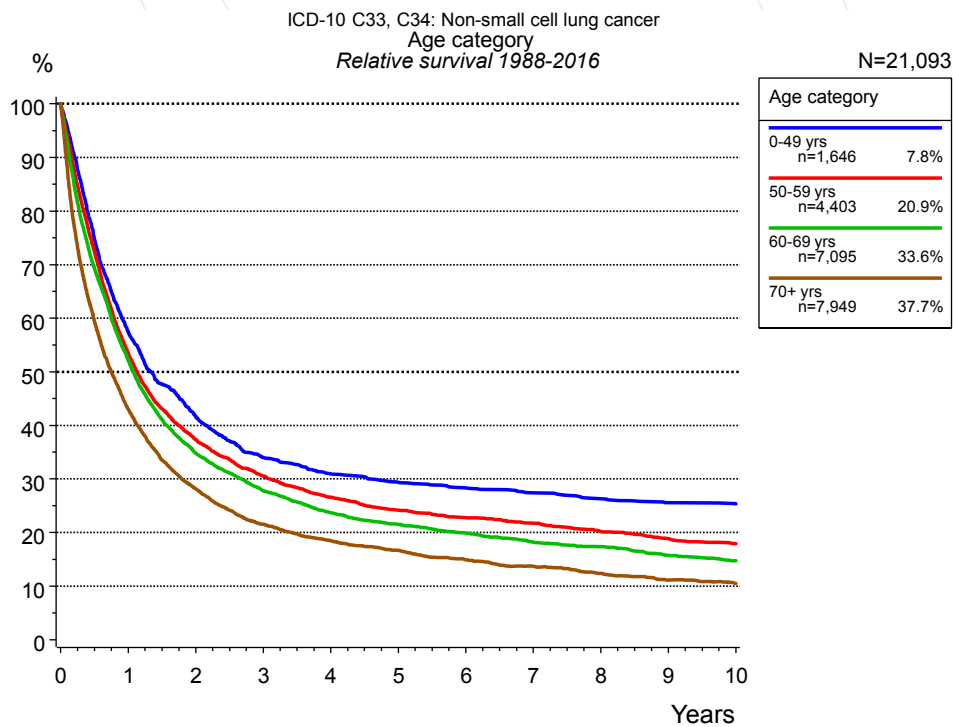


Figure 3b. Relative survival of patients with non-small cell LC by age category. Included in the evaluation are 21,093 cases diagnosed between 1988 and 2016.

Years	Age category							
	0-49 yrs n=1,646		50-59 yrs n=4,403		60-69 yrs n=7,095		70+ yrs n=7,949	
	obs. %	rel. %	obs. %	rel. %	obs. %	rel. %	obs. %	rel. %
0	100.0	100.0	100.0	100.0	100.0	100.0	100.0	100.0
1	57.5	57.6	53.2	53.5	51.4	52.1	41.0	43.0
2	41.6	41.7	36.9	37.4	33.7	34.8	25.6	28.1
3	33.8	34.0	29.9	30.5	26.5	27.8	18.7	21.6
4	30.7	31.0	25.8	26.6	22.2	23.7	15.2	18.5
5	29.1	29.4	23.3	24.2	19.8	21.5	12.9	16.6
6	27.9	28.3	21.7	22.8	17.9	19.9	10.9	14.9
7	27.0	27.4	20.6	21.8	16.0	18.2	9.4	13.6
8	25.8	26.3	18.9	20.2	14.9	17.3	7.9	12.4
9	24.9	25.6	17.4	18.9	13.2	15.7	6.6	11.2
10	24.6	25.4	16.4	17.9	11.9	14.7	5.7	10.5

Table 3c. Observed (obs.) and relative (rel.) survival of patients with non-small cell LC by age category for period 1988-2016 (N=21,093).

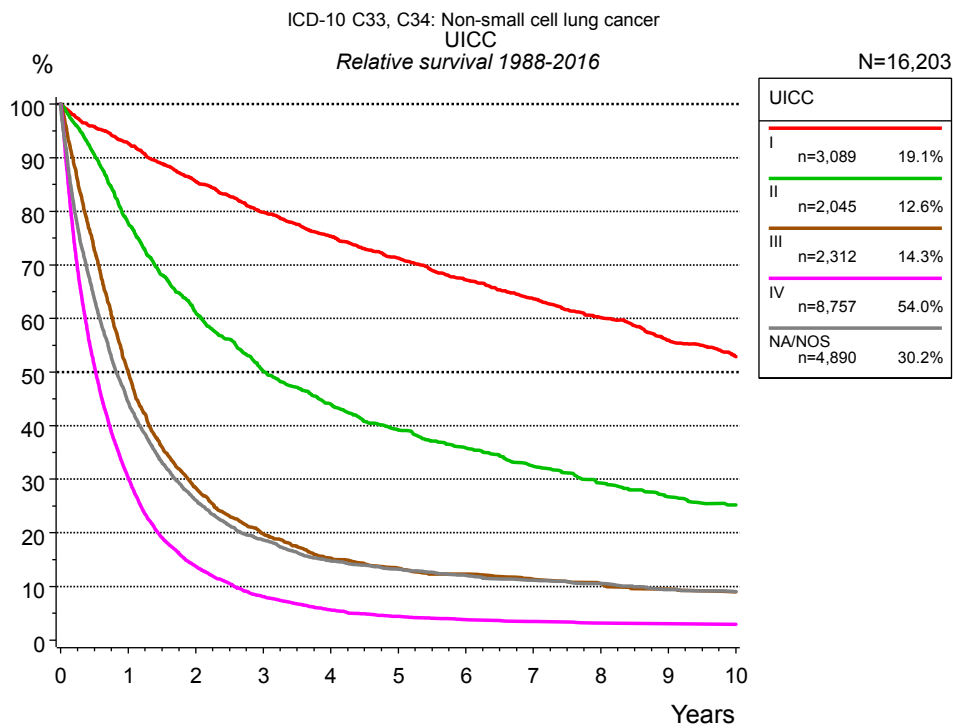


Figure 4a. Relative survival of patients with non-small cell LC by UICC. For 18,910 of 21,093 cases diagnosed between 1988 and 2016 valid data could be obtained for this item. For a total of 16,203 cases an evaluable classification was established. The grey line represents the subgroup of 4,890 patients with missing values regarding UICC (23.2 % of 21,093 patients, the percent values of all other categories are related to n=16,203).

Years	UICC									
	I n=3,089		II n=2,045		III n=2,312		IV n=8,757		NA/NOS n=4,890	
	obs. %	rel. %	obs. %	rel. %	obs. %	rel. %	obs. %	rel. %	obs. %	rel. %
0	100.0	100.0	100.0	100.0	100.0	100.0	100.0	100.0	100.0	100.0
1	90.8	92.7	76.4	77.8	49.0	50.1	29.6	30.2	43.0	44.4
2	82.2	85.6	58.8	61.1	27.3	28.4	13.2	13.7	24.5	26.1
3	75.1	79.8	47.4	50.2	18.6	19.8	7.6	8.1	17.0	18.6
4	69.3	75.3	40.7	44.0	14.0	15.3	5.2	5.6	13.1	14.8
5	64.0	71.2	35.4	39.2	12.1	13.4	4.1	4.4	11.4	13.2
6	59.0	67.2	31.7	35.8	10.9	12.3	3.4	3.8	10.1	12.1
7	54.6	63.7	28.0	32.4	9.8	11.3	3.0	3.5	9.1	11.2
8	50.3	60.2	24.8	29.3	8.9	10.5	2.7	3.2	8.4	10.5
9	45.6	55.9	22.1	26.7	7.9	9.5	2.6	3.0	7.3	9.4
10	42.0	52.8	20.3	25.3	7.2	9.0	2.5	2.9	6.9	9.0

Table 4b. Observed (obs.) and relative (rel.) survival of patients with non-small cell LC by UICC for period 1988-2016 (N=16,203).

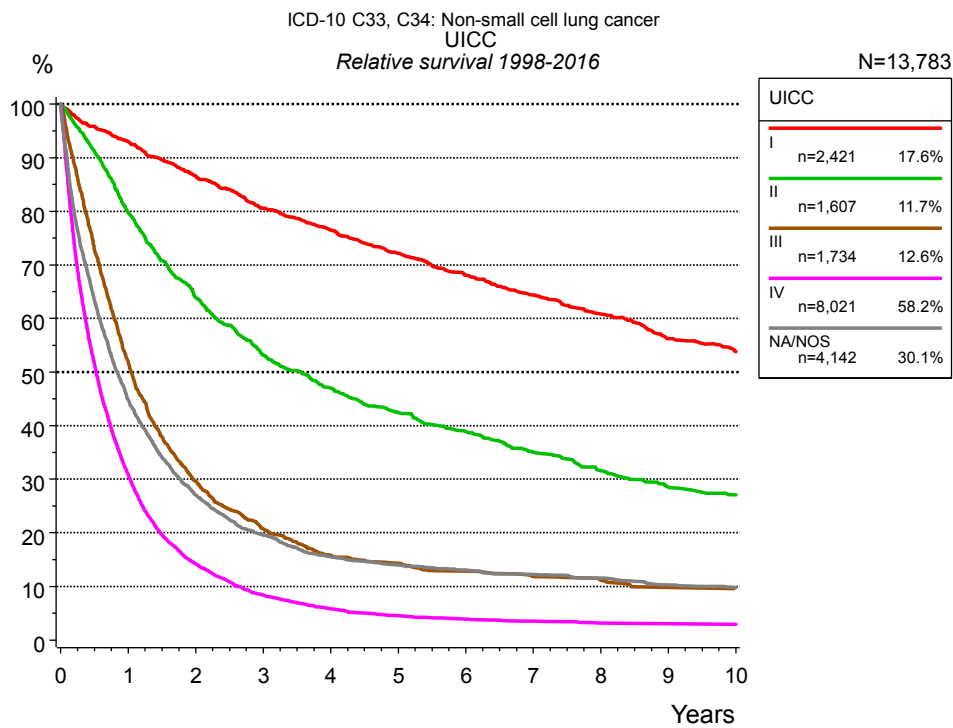


Figure 4c. Relative survival of patients with non-small cell LC by UICC. For 15,990 of 17,925 cases diagnosed between 1998 and 2016 valid data could be obtained for this item. For a total of 13,783 cases an evaluable classification was established. The grey line represents the subgroup of 4,142 patients with missing values regarding UICC (23.1 % of 17,925 patients, the percent values of all other categories are related to n=13,783).

Years	UICC									
	I n=2,421		II n=1,607		III n=1,734		IV n=8,021		NA/NOS n=4,142	
	obs. %	rel. %	obs. %	rel. %	obs. %	rel. %	obs. %	rel. %	obs. %	rel. %
0	100.0	100.0	100.0	100.0	100.0	100.0	100.0	100.0	100.0	100.0
1	91.2	93.0	78.3	79.8	50.7	51.9	30.1	30.8	43.4	44.9
2	83.2	86.5	61.5	63.9	28.4	29.7	13.6	14.2	25.4	27.0
3	75.9	80.6	50.2	53.1	19.5	20.8	7.9	8.4	17.9	19.6
4	70.5	76.5	43.5	47.0	14.6	15.8	5.4	5.8	13.8	15.5
5	64.9	72.1	38.4	42.4	13.0	14.3	4.2	4.6	12.1	14.0
6	59.9	68.1	34.4	38.8	11.4	12.9	3.5	3.9	11.0	13.0
7	55.2	64.4	30.2	35.0	10.3	11.9	3.1	3.5	10.0	12.2
8	50.9	60.8	26.8	31.6	9.5	11.2	2.7	3.2	9.2	11.5
9	45.9	56.2	23.5	28.5	8.3	9.8	2.6	3.1	8.0	10.2
10	42.9	53.8	21.8	27.1	7.7	9.5	2.5	2.9	7.4	9.8

Table 4d. Observed (obs.) and relative (rel.) survival of patients with non-small cell LC by UICC for period 1998-2016 (N=13,783).

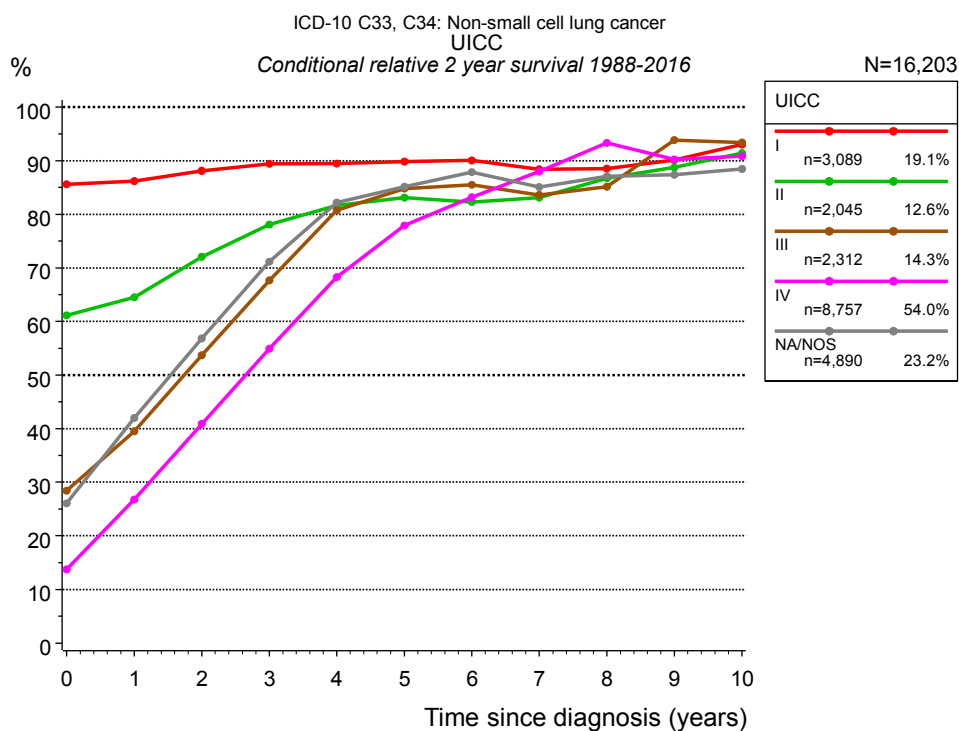


Figure 4e. Conditional relative 2-year survival of patients with non-small cell LC by UICC. For 18,910 of 21,093 cases diagnosed between 1988 and 2016 valid data could be obtained for this item. For a total of 16,203 cases an evaluable classification was established. The grey line represents the subgroup of 4,890 patients with missing values regarding UICC (23.2 % of 21,093 patients, the percent values of all other categories are related to n=16,203).

Years	UICC									
	I		II		III		IV		NA/NOS	
	n	Cond. surv. % 2 yrs	n	Cond. surv. % 2 yrs	n	Cond. surv. % 2 yrs	n	Cond. surv. % 2 yrs	n	Cond. surv. % 2 yrs
0	3,089	85.6	2,045	61.1	2,312	28.4	8,757	13.7	4,890	26.1
1	2,617	86.2	1,484	64.5	1,057	39.5	2,396	26.8	1,965	42.0
2	2,205	88.1	1,048	72.1	544	53.7	963	40.9	1,035	56.8
3	1,886	89.4	779	78.1	342	67.6	496	54.9	668	71.2
4	1,623	89.5	612	81.6	232	80.8	280	68.3	468	82.2
5	1,388	89.8	488	83.1	178	84.8	185	77.9	375	85.2
6	1,165	90.0	399	82.3	147	85.5	124	83.2	309	87.9
7	995	88.4	316	83.1	120	83.6	89	88.0	253	85.1
8	837	88.5	252	86.8	94	85.1	64	93.3	198	87.1
9	681	90.2	196	88.8	71	93.8	41	90.2	130	87.4
10	575	93.0	167	91.4	54	93.4	33	90.9	102	88.5

Table 4f. Conditional relative 2-year survival of patients with non-small cell LC by UICC for period 1988-2016 (N=16,203).

Conditional relative survival rates refer to the relative survival probability, in this case for 2 years after cancer diagnosis, compared to the age- and sex-matched population (=100 %) under the condition of being alive for a certain time period (x-axis in Figure 4c). The results illustrate to what extent the cancer induced mortality of particular subgroups declines in the subsequent years after detection of the malignancy. For instance, according to the presented survival statistics, patients in the subgroup UICC="I", who are alive at least 3 years after cancer diagnosis, the conditional relative 2-year survival rate is 89.4% (n=1,886).

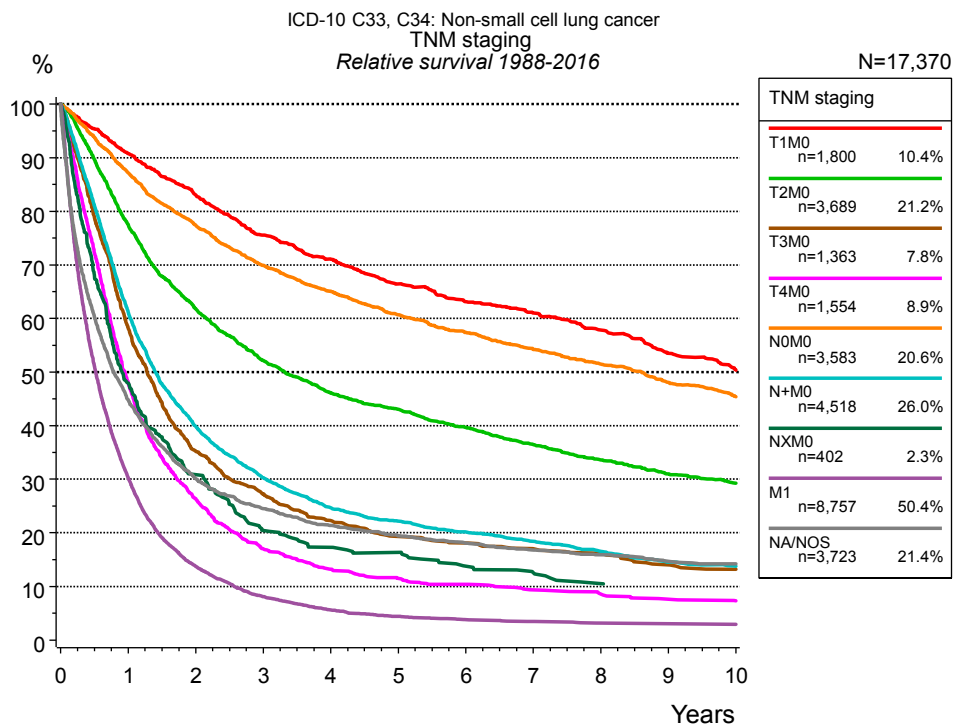


Figure 4g. Relative survival of patients with non-small cell LC by TNM staging. For 18,910 of 21,093 cases diagnosed between 1988 and 2016 valid data could be obtained for this item. For a total of 17,370 cases an evaluable classification was established. The accumulated percentage exceeds the 100 % value because patients are potentially considered in more than one subgroup. The grey line represents the subgroup of 3,723 patients with missing values regarding TNM staging (17.7 % of 21,093 patients, the percent values of all other categories are related to n=17,370).

Years	TNM staging													
	T1M0 n=1,800		T2M0 n=3,689		T3M0 n=1,363		T4M0 n=1,554		N0M0 n=3,583		N+M0 n=4,518		NXM0 n=402	
	obs. %	rel. %	obs. %	rel. %	obs. %	rel. %	obs. %	rel. %	obs. %	rel. %	obs. %	rel. %	obs. %	rel. %
0	100.0	100.0	100.0	100.0	100.0	100.0	100.0	100.0	100.0	100.0	100.0	100.0	100.0	100.0
1	89.0	90.7	75.7	77.5	57.0	58.2	46.9	48.0	85.2	87.2	59.9	61.3	46.6	47.9
2	79.7	83.0	59.0	61.8	33.6	35.3	25.3	26.4	74.0	77.4	38.2	39.9	28.9	30.8
3	71.1	75.6	48.6	52.2	25.5	27.3	16.0	17.0	65.3	69.9	28.4	30.3	18.5	20.4
4	65.5	71.0	42.0	46.1	20.4	22.3	12.2	13.2	59.5	65.1	22.7	24.7	15.3	17.3
5	60.0	66.4	38.2	43.0	17.4	19.3	10.3	11.5	54.1	60.7	20.0	22.2	13.9	16.3
6	55.8	63.1	34.4	39.7	16.0	18.1	9.2	10.4	50.1	57.4	17.8	20.2	11.1	13.8
7	52.7	61.0	30.8	36.4	14.7	17.0	8.1	9.4	46.2	54.2	15.9	18.4	9.8	12.5
8	48.8	57.8	27.7	33.6	13.7	16.1	7.3	8.6	42.8	51.5	14.0	16.6	8.0	10.5
9	44.0	53.5	24.8	31.0	11.8	14.0	6.3	7.6	38.9	48.1	12.0	14.6		
10	40.5	50.4	22.8	29.2	10.8	13.2	5.9	7.3	35.8	45.4	11.1	13.8		

<i>cont'd</i>	TNM staging			
	M1 n=8,757		NA/NOS n=3,723	
	obs. %	rel. %	obs. %	rel. %
Years				
0	100.0	100.0	100.0	100.0
1	29.6	30.2	43.4	44.8
2	13.2	13.7	28.4	30.1
3	7.6	8.1	22.6	24.5
4	5.2	5.6	19.2	21.4
5	4.1	4.4	17.0	19.4
6	3.4	3.8	15.4	18.1
7	3.0	3.5	14.0	16.8
8	2.7	3.2	13.0	15.9
9	2.6	3.0	11.6	14.7
10	2.5	2.9	11.0	14.2

Table 4h. Observed (obs.) and relative (rel.) survival of patients with non-small cell LC by TNM staging for period 1988-2016 (N=17,370).

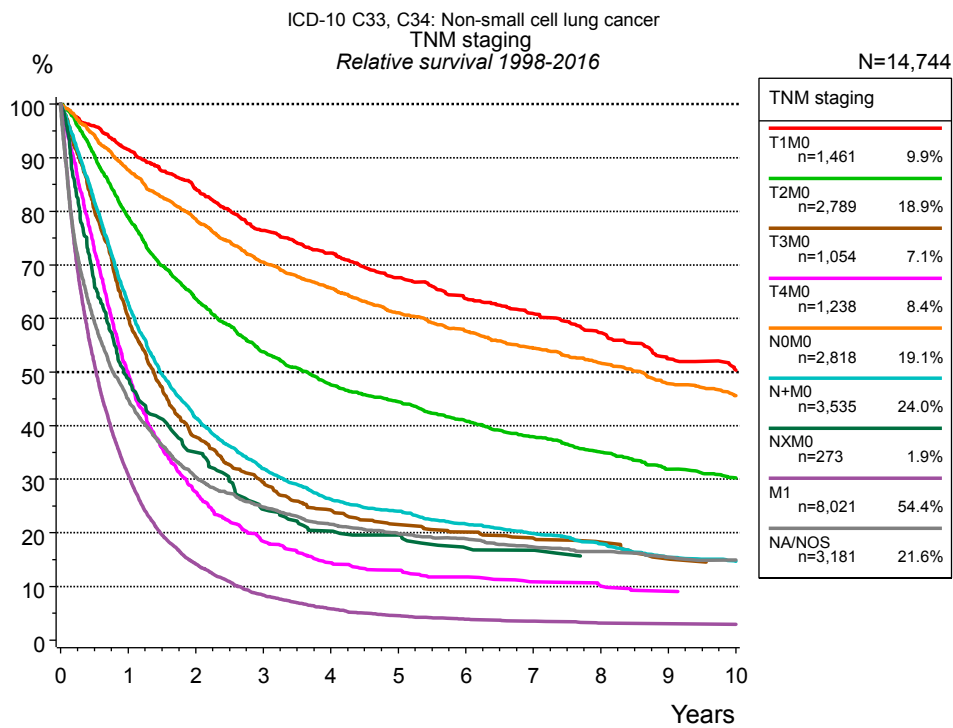


Figure 4i. Relative survival of patients with non-small cell LC by TNM staging. For 15,990 of 17,925 cases diagnosed between 1998 and 2016 valid data could be obtained for this item. For a total of 14,744 cases an evaluable classification was established. The accumulated percentage exceeds the 100 % value because patients are potentially considered in more than one subgroup. The grey line represents the subgroup of 3,181 patients with missing values regarding TNM staging (17.7 % of 17,925 patients, the percent values of all other categories are related to n=14,744).

Years	TNM staging													
	T1M0 n=1,461		T2M0 n=2,789		T3M0 n=1,054		T4M0 n=1,238		N0M0 n=2,818		N+M0 n=3,535		NXM0 n=273	
	obs. %	rel. %	obs. %	rel. %	obs. %	rel. %	obs. %	rel. %	obs. %	rel. %	obs. %	rel. %	obs. %	rel. %
0	100.0	100.0	100.0	100.0	100.0	100.0	100.0	100.0	100.0	100.0	100.0	100.0	100.0	100.0
1	89.7	91.5	77.1	78.9	58.9	60.2	48.7	49.7	85.8	87.7	61.5	62.9	47.5	48.8
2	80.8	84.2	60.8	63.7	36.3	37.9	26.5	27.7	75.1	78.6	39.8	41.5	32.9	35.1
3	71.8	76.4	50.2	53.8	27.6	29.4	17.3	18.4	65.9	70.5	30.0	32.0	22.1	24.4
4	66.5	72.2	43.4	47.7	22.2	24.2	13.3	14.4	60.1	65.7	24.2	26.3	18.1	20.3
5	60.9	67.6	39.6	44.5	19.5	21.6	11.8	13.0	54.5	61.1	21.7	24.1	16.9	19.6
6	56.1	63.7	35.5	40.9	17.8	20.1	10.4	11.8	50.3	57.7	19.1	21.6	14.0	17.2
7	52.5	60.9	32.1	37.9	16.4	19.0	9.3	10.8	46.4	54.5	17.1	19.9	13.5	16.7
8	48.3	57.3	28.9	35.1	15.6	18.3	8.6	10.1	43.0	51.7	15.2	18.0	11.8	15.2
9	43.0	52.5	25.6	31.9	12.9	15.1	7.6	9.1	38.8	47.8	12.7	15.4		
10	40.4	50.3	23.7	30.2					36.0	45.6	11.8	14.7		

<i>cont'd</i>	TNM staging			
	M1 n=8,021		NA/NOS n=3,181	
	obs. %	rel. %	obs. %	rel. %
Years				
0	100.0	100.0	100.0	100.0
1	30.1	30.8	43.5	44.9
2	13.6	14.2	28.7	30.3
3	7.9	8.4	22.9	24.8
4	5.4	5.8	19.4	21.6
5	4.2	4.6	17.4	19.8
6	3.5	3.9	16.1	18.9
7	3.1	3.5	14.5	17.4
8	2.7	3.2	13.4	16.5
9	2.6	3.1	12.2	15.4
10	2.5	2.9	11.6	14.9

Table 4j. Observed (obs.) and relative (rel.) survival of patients with non-small cell LC by TNM staging for period 1998-2016 (N=14,744).

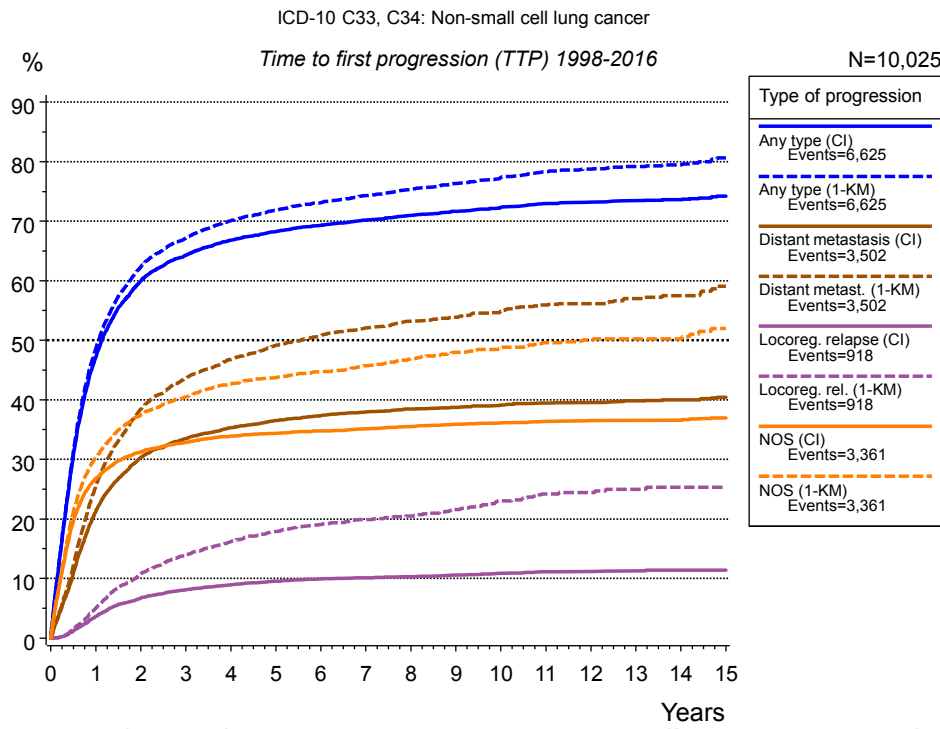


Figure 5a. Time to first progression of 10,025 patients with non-small cell LC diagnosed between 1998 and 2016 (in solid cancers M0 only) estimated by cumulative incidence function (CI, solid line) accounting for death as competing risk and by inverse Kaplan-Meier estimate (1-KM, dashed line). The frequency of events may be underestimated due to underreporting.

Years	Type of progression						
	Any type (CI)	Any type (1-KM)	Distant metastasis (CI)	Distant metast. (1-KM)	Locoreg. relapse (CI)	Locoreg. rel. (1-KM)	NOS (CI)
	n=10,025 %	n=10,025 %	n=10,025 %	n=10,025 %	n=10,025 %	n=10,025 %	n=10,025 %
0	0.0	0.0	0.0	0.0	0.0	0.0	0.0
1	47.2	48.6	21.3	25.5	3.6	5.1	26.8
2	60.0	62.3	30.3	38.5	6.7	10.7	31.2
3	64.3	67.2	33.5	43.6	8.1	13.9	32.9
4	66.8	70.1	35.3	46.7	8.9	16.2	33.9
5	68.3	71.9	36.5	49.1	9.5	17.9	34.4
6	69.3	73.1	37.3	50.8	9.9	19.1	34.8
7	70.2	74.3	37.9	52.1	10.1	19.9	35.1
8	71.0	75.4	38.4	53.2	10.3	20.4	35.5
9	71.7	76.3	38.7	53.9	10.6	21.6	35.9
10	72.4	77.4	39.1	54.9	10.9	23.0	36.1
11	73.0	78.4	39.5	55.9	11.2	24.2	36.4
12	73.2	78.8	39.6	56.1	11.2	24.4	36.5
13	73.5	79.2	39.8	57.0	11.3	24.9	36.6
14	73.6	79.5	40.0	57.5	11.4	25.3	36.6
15	74.2	80.6	40.4	59.1	11.4	25.3	37.0

Type of progression	
<i>cont'd</i>	NOS (1-KM) n=10,025
Years	%
0	0.0
1	30.4
2	37.4
3	40.5
4	42.7
5	43.7
6	44.8
7	45.7
8	46.9
9	48.0
10	48.7
11	49.6
12	50.1
13	50.2
14	50.2
15	52.0

Table 5b. Time to first progression of patients with non-small cell LC for period 1998-2016 (N=10,025).

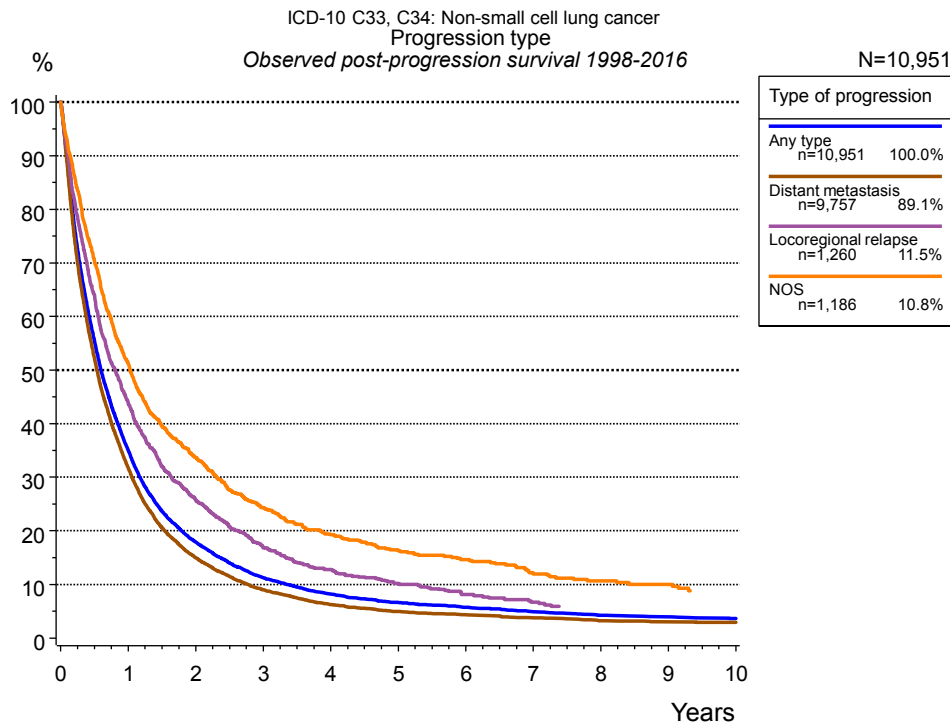


Figure 5c. Observed post-progression survival of 10,951 patients with non-small cell LC diagnosed between 1998 and 2016. These 10,951 patients with documented progression events during their course of disease represent 61.4 % of the totally 17,844 evaluated cases (incl. M1, n=7,819, 43.8 %). Patients with cancer relapse documented via death certificates only were excluded (n=3,493, 19.6 %). Multiple progression types on different sites are included in the evaluation even when not occurring synchronously. The NOS (not otherwise specified) class is included under the condition, that it is the one and only progression type during the course of disease.

Medical record documentation often lacks the linguistic severity to distinguish between local relapse, regional lymph node metastasis and distant spread in solid cancers. Frequently, the statement “not specified” is the only information in registries regarding relapse of the disease. The category “Any type” denotes all cases who suffered from at least one relapse during the course of disease (incl. primary M1-status). Although, the real number of relapsed patients is likely to be much higher. The accumulated percentage of patients with local relapse or distant metastasis exceeds the 100 % value because patients are potentially considered in more than one subgroup.

Years	Type of progression			
	Any type n=10,951 %	Distant metastasis n=9,757 %	Locoregional relapse n=1,260 %	NOS n=1,186 %
0	100.0	100.0	100.0	100.0
1	35.0	31.7	43.9	51.2
2	17.9	14.9	25.8	33.7
3	11.2	9.0	16.8	24.3
4	8.2	6.2	12.8	19.3
5	6.6	5.0	10.2	16.3
6	5.7	4.3	8.1	14.6
7	4.9	3.8	6.7	11.9
8	4.2	3.2		10.6
9	3.9	3.0		10.0
10	3.7	2.9		

Table 5d. Observed post-progression survival of patients with non-small cell LC for period 1998-2016 (N=10,951).

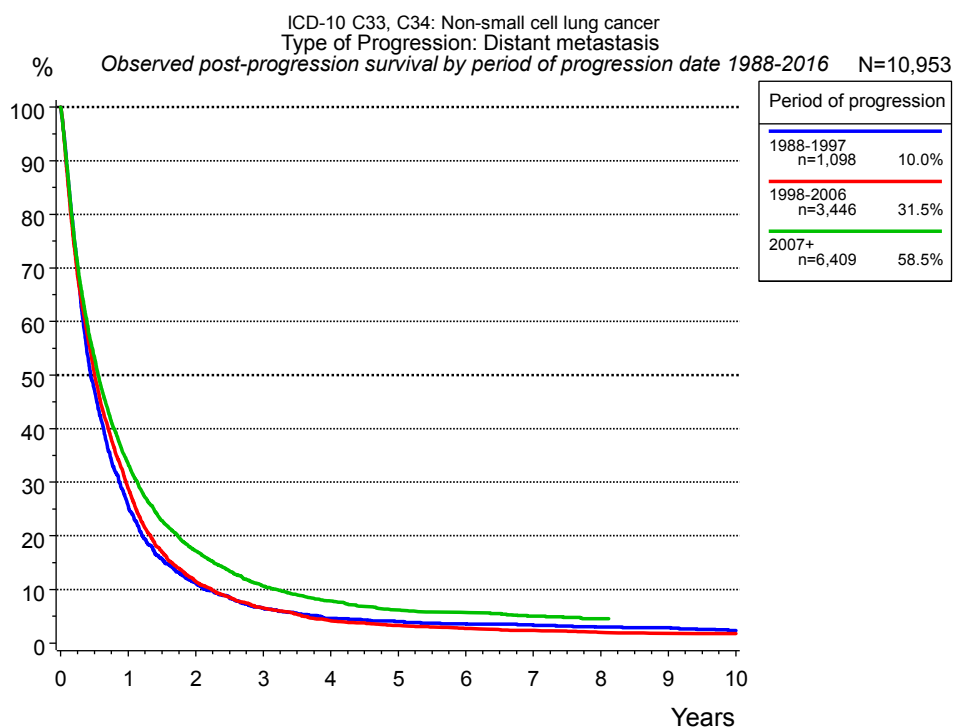


Figure 5e. Observed post-progression (distant metastasis) survival of 10,953 patients with non-small cell LC diagnosed between 1988 and 2016 by period of progression.

Years	Period of progression		
	1988-1997 n=1,098 %	1998-2006 n=3,446 %	2007+ n=6,409 %
0	100.0	100.0	100.0
1	25.6	28.8	33.4
2	11.2	11.5	17.2
3	6.5	6.5	10.6
4	4.6	4.1	7.8
5	4.0	3.3	6.2
6	3.6	2.7	5.7
7	3.3	2.3	5.0
8	3.0	1.9	4.5
9	2.9	1.8	
10	2.3	1.7	

Table 5f. Observed post-progression (distant metastasis) survival of patients with non-small cell LC for period 1988-2016 by period of progression (N=10,953).

Shortcuts

MCR Munich Cancer Registry, Germany

NCI National Cancer Institute, USA

SEER Surveillance, Epidemiology, and End Results, USA

UICC Union for International Cancer Control, Geneva

DCO Death certificate only Death certificate provides the only notification to the registry.

NA Not available

NOS Not otherwise specified

OS Overall/Observed survival Overall/Observed survival (Kaplan-Meier estimate)
Date of entry: diagnosis
Event: death from any cause

RS Relative survival Survival compared to “general population”,
ratio of observed to expected survival (Ederer II method),
reflecting cancer specific survival

AS Assembled survival Assembled chart of
observed, expected, relative survival

CS Conditional survival Survival probability under the condition of surviving
a given period of time

TTP Time to progression Time to first progression / relapse
Date of entry: diagnosis
Event: (progression / relapse): first local-, lymph node recurrence,
distant metastasis or unspecified progression

1-KM 1 minus Kaplan-Meier estimator
 (“inverse” Kaplan-Meier estimator)

CI Cumulative incidence
Death as competing risk (according to Kalbfleisch und Prentice)

PPS Post-progression survival Survival since first progression / relapse (Kaplan-Meier estimate)
Date of entry (progression / relapse): first local-, lymph node
recurrence, distant metastasis or unspecified progression
Event: death from any cause

Recommended Citation

Munich Cancer Registry. Survival ICD-10 C33, C34: Non-small cell LC [Internet]. 2018 [updated 2018 Aug 22; cited 2018 Oct 1]. Available from: https://www.tumorregister-muenchen.de/en/facts/surv/sC34n_E-ICD-10-C33-C34-Non-small-cell-LC-survival.pdf

Copyright

The content of the public web site provided by the Munich Cancer Registry is available worldwide and free of charge. All documents are free to download, utilize, copy, print-out and distribute, providing that the MCR is referenced.

Disclaimer

The Munich Cancer Registry reserves the right to not be responsible for the topicality, correctness, completeness or quality of the information provided. Liability claims regarding damage caused by the use of any information provided, including any kind of information which is incomplete or incorrect, will therefore be rejected.