

# Munich Cancer Registry



- ▶ Incidence and Mortality
- ▶ Selection Matrix
- ▶ Homepage
- ▶ *Deutsch*

## ICD-10 C72: Spinal cord cancer

### Survival

|                   |            |
|-------------------|------------|
| Year of diagnosis | 1998-2020  |
| Patients          | 732        |
| Diseases          | 732        |
| Cases evaluated   | 630        |
| Creation date     | 04/15/2022 |
| Database export   | 12/20/2021 |
| Population        | 4.92 m     |



Munich Cancer Registry  
Cancer Registry Bavaria - Upper Bavaria Regional Center  
at Klinikum Grosshadern/IBE  
Marchioninistr. 15  
Munich, 81377  
Germany

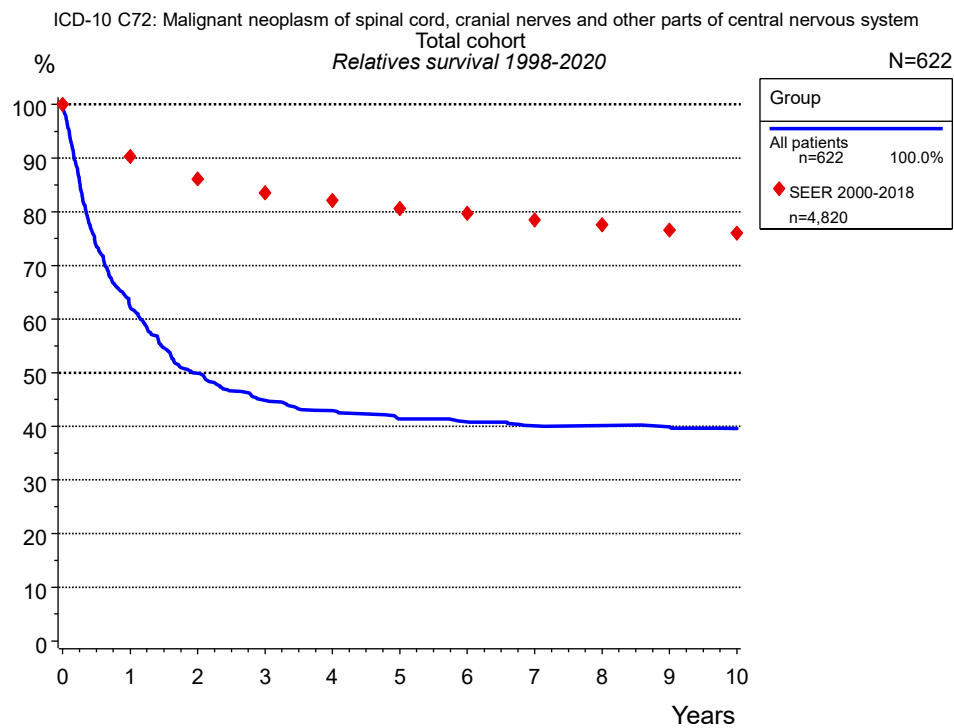
<https://www.tumorregister-muenchen.de/en>

[https://www.tumorregister-muenchen.de/en/facts/surv/sC72\\_\\_E-ICD-10-C72-Spinal-cord-cancer-survival.pdf](https://www.tumorregister-muenchen.de/en/facts/surv/sC72__E-ICD-10-C72-Spinal-cord-cancer-survival.pdf)

Index of figures and tables

| Fig./Tbl. |  | Page |
|-----------|--|------|
| 1a        | Relatives survival of total cohort (chart) | 3    |
| 1b        | Survival of total cohort (table)           | 3    |





**Figure 1a.** Relative survival of the total cohort with spinal cord cancer. Included in the evaluation are 622 cases diagnosed between 1998 and 2020.

| Group              |        |        |
|--------------------|--------|--------|
| All patients n=622 |        |        |
| Years              | obs. % | rel. % |
| 0                  | 100.0  | 100.0  |
| 1                  | 61.2   | 62.1   |
| 2                  | 48.8   | 49.9   |
| 3                  | 43.6   | 44.8   |
| 4                  | 41.4   | 42.9   |
| 5                  | 39.4   | 41.4   |
| 6                  | 38.8   | 40.8   |
| 7                  | 37.8   | 40.1   |
| 8                  | 37.5   | 40.1   |
| 9                  | 37.1   | 39.9   |
| 10                 | 36.4   | 39.6   |
| Median             | 1.8    |        |

**Table 1b.** Observed (obs.) and relative (rel.) survival of the total cohort with spinal cord cancer for period 1998-2020 (N=622).

## Shortcuts

MCR Munich Cancer Registry, Germany

NCI National Cancer Institute, USA

SEER Surveillance, Epidemiology, and End Results, USA

UICC Union for International Cancer Control, Geneva

DCO Death certificate only Death certificate provides the only notification to the registry.

NA Not available

NOS Not otherwise specified

OS Overall/Observed survival Overall/Observed survival (Kaplan-Meier estimate)

Date of entry: diagnosis  
Event: death from any cause

RS Relative survival Survival compared to “general population”, ratio of observed to expected survival (Ederer II method), reflecting cancer specific survival

AS Assembled survival Assembled chart of observed, expected, relative survival

CS Conditional survival Survival probability under the condition of surviving a given period of time

TTP Time to progression Time to first progression / relapse  
Date of entry: diagnosis  
Event: (progression / relapse): first local-, lymph node recurrence, distant metastasis or unspecified progression

1-KM 1 minus Kaplan-Meier estimator (“inverse” Kaplan-Meier estimator)

CI Cumulative incidence  
Death as competing risk (according to Kalbfleisch und Prentice)

PPS Post-progression survival Survival since first progression / relapse (Kaplan-Meier estimate)  
Date of entry (progression / relapse): first local-, lymph node recurrence, distant metastasis or unspecified progression  
Event: death from any cause

## Recommended Citation

Munich Cancer Registry. Survival ICD-10 C72: Spinal cord cancer [Internet]. 2022 [updated 2022 Apr 15; cited 2022 Jun 1]. Available from: [https://www.tumorregister-muenchen.de/en/facts/surv/sC72\\_\\_E-ICD-10-C72-Spinal-cord-cancer-survival.pdf](https://www.tumorregister-muenchen.de/en/facts/surv/sC72__E-ICD-10-C72-Spinal-cord-cancer-survival.pdf)

## Copyright

The content of the public web site provided by the Munich Cancer Registry is available worldwide and free of charge. All documents are free to download, utilize, copy, print-out and distribute, providing that the MCR is referenced.

## Disclaimer

The Munich Cancer Registry reserves the right to not be responsible for the topicality, correctness, completeness or quality of the information provided. Liability claims regarding damage caused by the use of any information provided, including any kind of information which is incomplete or incorrect, will therefore be rejected.