

Munich Cancer Registry



- ▶ Incidence and Mortality
- ▶ Selection Matrix
- ▶ Homepage
- ▶ *Deutsch*

ICD-10 C76-C80: Secondary and unspecified sites

Survival

Year of diagnosis	1988-1997	1998-2019
Patients	689	8,129
Diseases	690	8,137
Cases evaluated	623	4,396
Creation date	01/27/2021	
Database export	01/07/2021	
Population	4.92 m	



Munich Cancer Registry
Cancer Registry Bavaria - Upper Bavaria Regional Center
at Klinikum Grosshadern/IBE
Marchioninstr. 15
Munich, 81377
Germany

<https://www.tumorregister-muenchen.de/en>

<https://www.tumorregister-muenchen.de/en/facts/surv/sC7680E-ICD-10-C76-C80-Secondary-and-unspecified-sites-survival.pdf>

Index of figures and tables

Fig./Tbl.		Page
1a	Relative survival by period of diagnosis (chart)	3
1b	Survival by period of diagnosis (table)	3
2a	Survival by sex (chart)	4
2b	Survival by sex (table)	4
2c	Conditional survival by sex (chart)	5
2d	Conditional survival by sex (table)	5
3a	Observed survival by age category (chart)	6
3b	Relative survival by age category (chart)	6
3c	Survival by age category (table)	7
4a	Relative survival by extent of disease (chart)	8
4b	Survival by extent of disease (table)	8

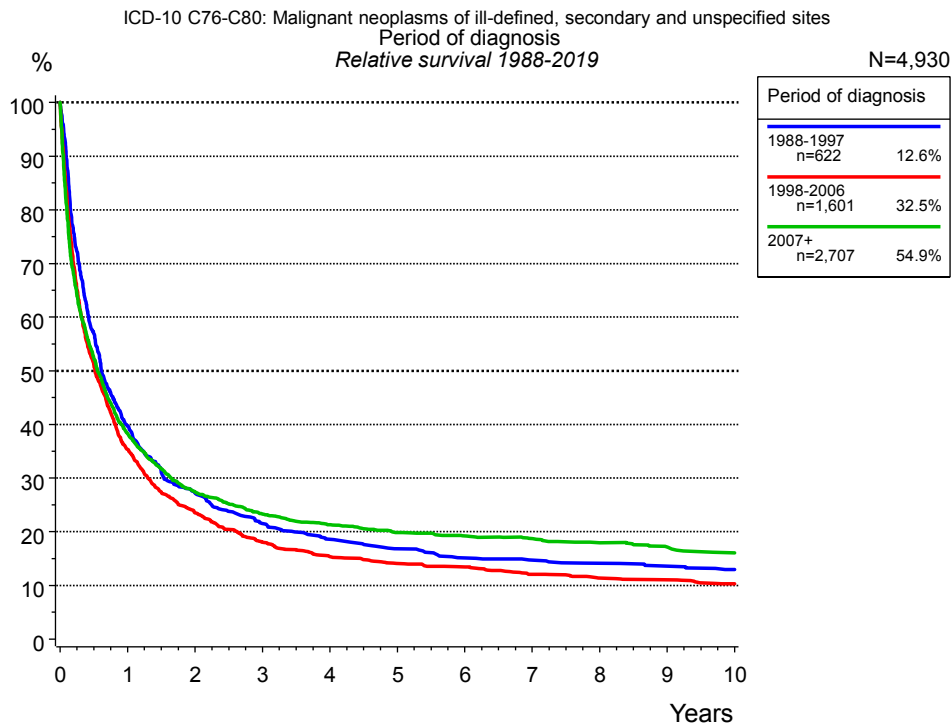


Figure 1a. Relative survival of patients with Secondary and unspecified sites by period of diagnosis. Included in the evaluation are 4,930 cases diagnosed between 1988 and 2019.

The survival results of the SEER program (Surveillance, Epidemiology, and End Results) of the American National Cancer Institute (NCI) are summarized as the period of diagnosis from to , and are represented by colored diamonds in order to facilitate comparisons between MCR and SEER.

The presented survival curves are derived from clinical records with valid follow-up informations, which means that death certificate cases (DCO) cases are omitted from the analysis. With this one restriction, the MCR has provided population-based statistics since 1998, collecting data on all cancer cases in the region of southern Bavaria. Historical data of previous time periods can be heavily selected, therefore, univariate survival comparisons of the presented time periods must be carefully considered. Nonetheless, all calculable survival curves are depicted to facilitate the comparison of long time follow-up analyses of relative survival between particular cancers.

Years	Period of diagnosis					
	1988-1997 n=622		1998-2006 n=1,601		2007+ n=2,707	
	obs. %	rel. %	obs. %	rel. %	obs. %	rel. %
0	100.0	100.0	100.0	100.0	100.0	100.0
1	38.5	39.7	34.1	35.3	37.0	38.3
2	25.9	27.3	22.1	23.5	25.9	27.4
3	19.8	21.5	16.5	18.0	21.4	23.3
4	16.7	18.6	13.8	15.3	19.1	21.3
5	14.7	16.8	12.3	14.1	17.3	19.8
6	12.9	15.1	11.6	13.5	16.3	19.2
7	12.2	14.7	10.1	12.1	15.5	18.7
8	11.5	14.1	9.3	11.3	14.5	18.0
9	10.8	13.6	8.9	11.0	13.5	17.2
10	10.1	12.9	8.1	10.3	12.4	16.0
Median	0.6		0.5		0.5	

Table 1b. Observed (obs.) and relative (rel.) survival of patients with Secondary and unspecified sites by period of diagnosis for period 1988-2019 (N=4,930).

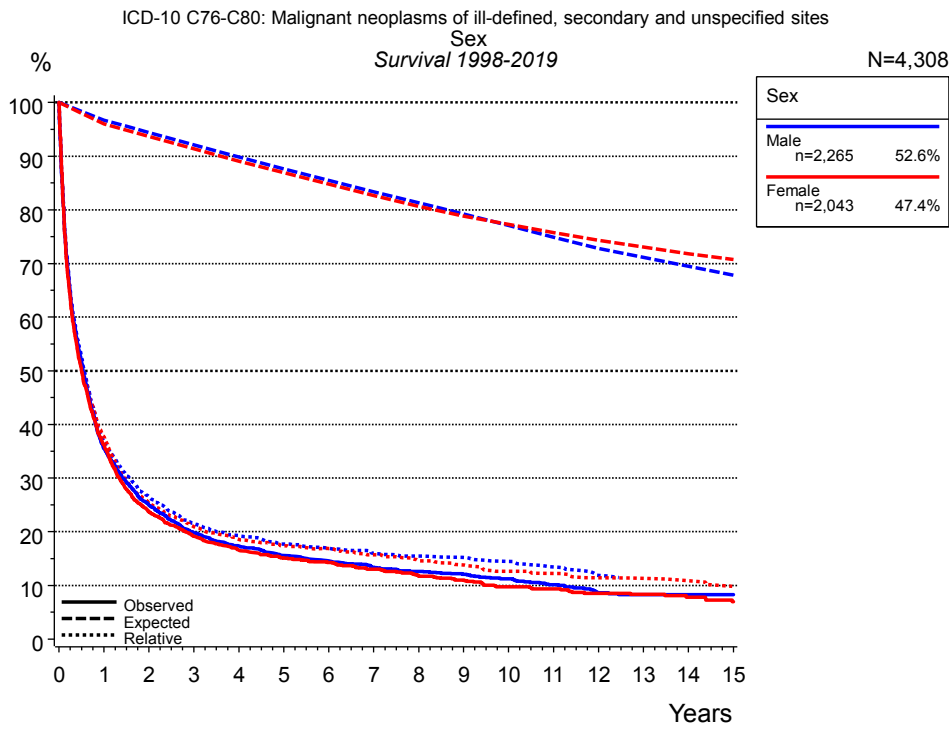


Figure 2a. Survival of patients with Secondary and unspecified sites by sex. Included in the evaluation are 4,308 cases diagnosed between 1998 and 2019.

Years	Sex			
	Male n=2,265		Female n=2,043	
	obs. %	rel. %	obs. %	rel. %
0	100.0	100.0	100.0	100.0
1	35.5	36.7	36.2	37.7
2	25.0	26.5	23.7	25.3
3	19.8	21.5	19.2	20.9
4	17.3	19.3	16.5	18.5
5	15.5	17.7	15.1	17.4
6	14.6	17.0	14.3	16.8
7	13.4	16.0	13.0	15.7
8	12.6	15.5	11.8	14.6
9	12.1	15.2	11.0	13.8
10	11.2	14.5	9.8	12.6
11	10.1	13.4	9.3	12.2
12	8.6	11.8	8.5	11.4
13	8.3	11.5	8.3	11.3
14	8.3	11.6	7.8	10.9
15	8.3	11.7	7.0	9.8
Median	0.5		0.5	

Table 2b. Observed (obs.) and relative (rel.) survival of patients with Secondary and unspecified sites by sex for period 1998-2019 (N=4,308).

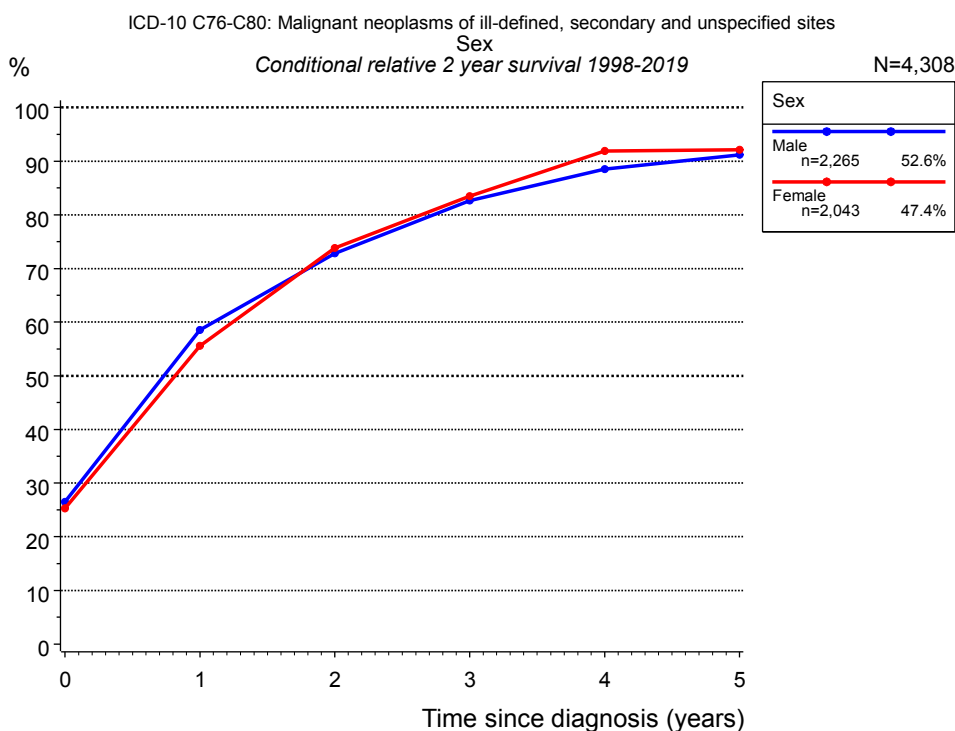


Figure 2c. Conditional relative 2-year survival of patients with Secondary and unspecified sites by sex. For 4,308 of 4,308 cases diagnosed between 1998 and 2019 valid data could be obtained for this item.

Years	Sex			
	Male		Female	
	n	Cond. surv. % 2 yrs	n	Cond. surv. % 2 yrs
0	2,265	26.5	2,043	25.3
1	772	58.5	705	55.6
2	517	72.8	430	73.8
3	390	82.7	322	83.5
4	313	88.5	260	91.9
5	259	91.2	220	92.1

Table 2d. Conditional relative 2-year survival of patients with Secondary and unspecified sites by sex for period 1998-2019 (N=4,308).

Conditional relative survival rates refer to the relative survival probability, in this case for 2 years after cancer diagnosis, compared to the age- and sex-matched population (=100 %) under the condition of being alive for a certain time period (x-axis in Figure 2a). The results illustrate to what extent the cancer induced mortality of particular subgroups declines in the subsequent years after detection of the malignancy. For instance, according to the presented survival statistics, patients in the subgroup sex="Male", who are alive at least 3 years after cancer diagnosis, the conditional relative 2-year survival rate is 82.7% (n=390).

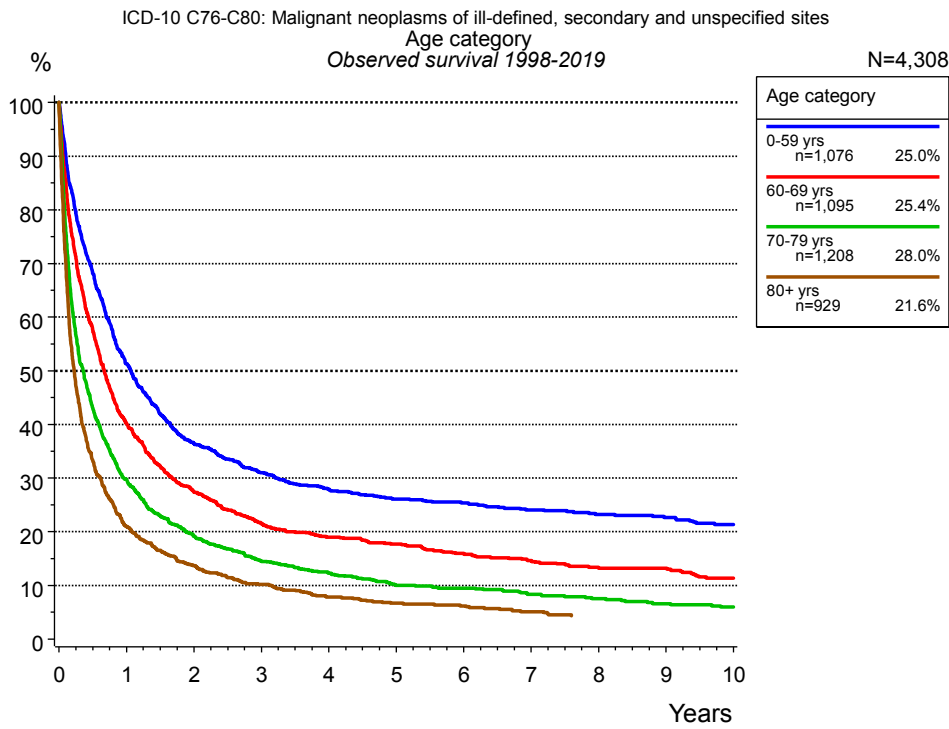


Figure 3a. Observed survival of patients with Secondary and unspecified sites by age category. Included in the evaluation are 4,308 cases diagnosed between 1998 and 2019.

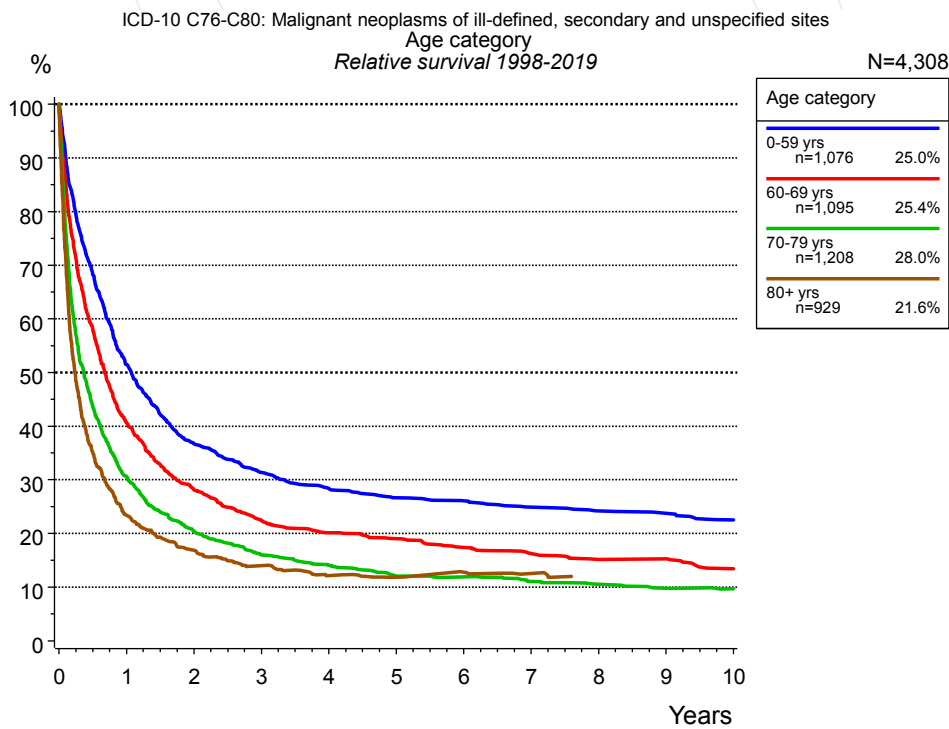


Figure 3b. Relative survival of patients with Secondary and unspecified sites by age category. Included in the evaluation are 4,308 cases diagnosed between 1998 and 2019.

Years	Age category							
	0-59 yrs n=1,076		60-69 yrs n=1,095		70-79 yrs n=1,208		80+ yrs n=929	
	obs. %	rel. %	obs. %	rel. %	obs. %	rel. %	obs. %	rel. %
0	100.0	100.0	100.0	100.0	100.0	100.0	100.0	100.0
1	51.3	51.5	40.2	40.7	29.7	30.6	20.9	23.4
2	36.5	36.7	27.4	28.1	19.2	20.4	13.7	16.9
3	31.0	31.4	21.5	22.4	14.6	16.0	10.1	14.0
4	28.0	28.4	19.0	20.1	12.2	14.1	7.8	12.2
5	26.0	26.6	17.7	19.0	10.0	12.1	6.6	11.9
6	25.4	26.1	16.0	17.4	9.5	11.9	6.2	12.8
7	24.1	24.9	14.6	16.3	8.3	11.1	5.1	12.6
8	23.2	24.2	13.4	15.2	7.5	10.5		
9	22.6	23.7	13.2	15.3	6.6	9.8		
10	21.3	22.5	11.3	13.5	5.9	9.7		
Median	1.1		0.7		0.4		0.2	

Table 3c. Observed (obs.) and relative (rel.) survival of patients with Secondary and unspecified sites by age category for period 1998-2019 (N=4,308).

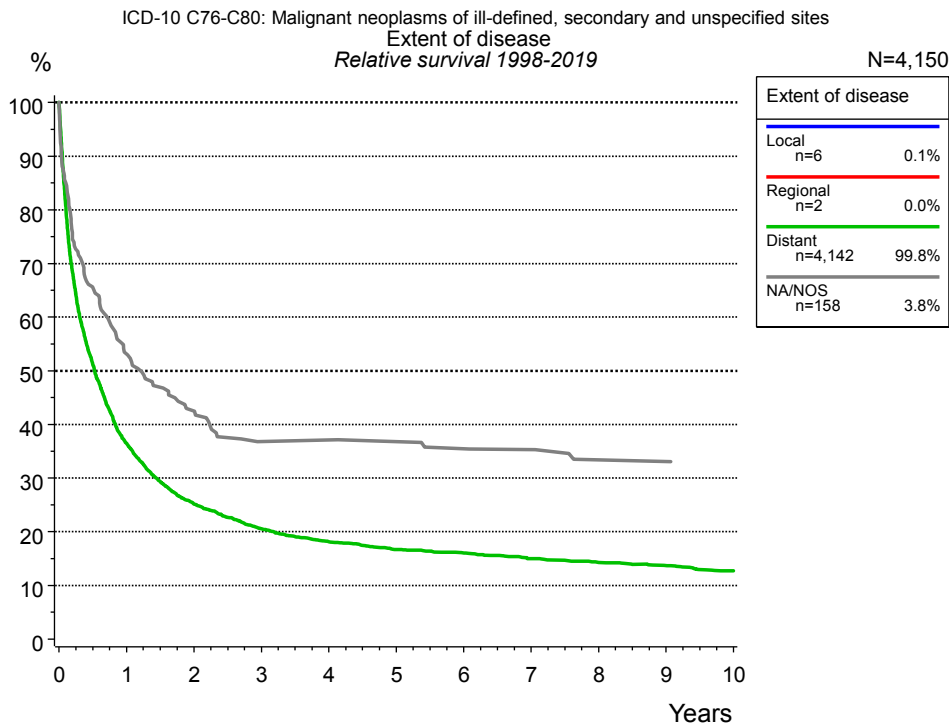


Figure 4a. Relative survival of patients with Secondary and unspecified sites by extent of disease. For 4,152 of 4,308 cases diagnosed between 1998 and 2019 valid data could be obtained for this item. For a total of 4,150 cases an evaluable classification was established. The grey line represents the subgroup of 158 patients with missing values regarding extent of disease (3.7 % of 4,308 patients, the percent values of all other categories are related to n=4,150). Subgroups with sample size <20 are omitted from the chart.

Years	Extent of disease			
	Distant n=4,142		NA/NOS n=158	
	obs. %	rel. %	obs. %	rel. %
0	100.0	100.0	100.0	100.0
1	35.2	36.5	51.0	53.1
2	23.7	25.2	39.8	42.5
3	18.9	20.5	33.1	36.8
4	16.3	18.1	33.1	37.1
5	14.6	16.7	31.7	36.8
6	13.7	16.1	30.2	35.5
7	12.5	15.0	29.4	35.3
8	11.6	14.3	26.7	33.4
9	10.9	13.7	26.7	33.0
10	9.9	12.7		
Median	0.5		1.1	

Table 4b. Observed (obs.) and relative (rel.) survival of patients with Secondary and unspecified sites by extent of disease for period 1998-2019 (N=4,150).

Shortcuts

MCR	Munich Cancer Registry, Germany	
NCI	National Cancer Institute, USA	
SEER	Surveillance, Epidemiology, and End Results, USA	
UICC	Union for International Cancer Control, Geneva	
DCO	Death certificate only	Death certificate provides the only notification to the registry.
NA	Not available	
NOS	Not otherwise specified	
OS	Overall/Observed survival	Overall/Observed survival (Kaplan-Meier estimate) Date of entry: diagnosis Event: death from any cause
RS	Relative survival	Survival compared to “general population”, ratio of observed to expected survival (Ederer II method), reflecting cancer specific survival
AS	Assembled survival	Assembled chart of observed, expected, relative survival
CS	Conditional survival	Survival probability under the condition of surviving a given period of time
TTP	Time to progression	Time to first progression / relapse Date of entry: diagnosis Event: (progression / relapse): first local-, lymph node recurrence, distant metastasis or unspecified progression
1-KM		1 minus Kaplan-Meier estimator ("inverse" Kaplan-Meier estimator)
CI		Cumulative incidence Death as competing risk (according to Kalbfleisch und Prentice)
PPS	Post-progression survival	Survival since first progression / relapse (Kaplan-Meier estimate) Date of entry (progression / relapse): first local-, lymph node recurrence, distant metastasis or unspecified progression Event: death from any cause

Recommended Citation

Munich Cancer Registry. Survival ICD-10 C76-C80: Secondary and unspecified sites [Internet]. 2021 [updated 2021 Jan 27; cited 2021 Mar 1]. Available from: <https://www.tumorregister-muenchen.de/en/facts/surv/sC7680E-ICD-10-C76-C80-Secondary-and-unspecified-sites-survival.pdf>

Copyright

The content of the public web site provided by the Munich Cancer Registry is available worldwide and free of charge. All documents are free to download, utilize, copy, print-out and distribute, providing that the MCR is referenced.

Disclaimer

The Munich Cancer Registry reserves the right to not be responsible for the topicality, correctness, completeness or quality of the information provided. Liability claims regarding damage caused by the use of any information provided, including any kind of information which is incomplete or incorrect, will therefore be rejected.