

Munich Cancer Registry



- Incidence and Mortality
- Selection Matrix
- Homepage
- *Deutsch*

ICD-10 C77-C80: Secondary and unknown sites

Survival

Year of diagnosis	1988-1997	1998-2020
Patients	676	8,361
Diseases	677	8,369
Cases evaluated	612	4,531
Creation date	04/15/2022	
Database export	12/20/2021	
Population	4.92 m	



Munich Cancer Registry
Cancer Registry Bavaria - Upper Bavaria Regional Center
at Klinikum Grosshadern/IBE
Marchioninstr. 15
Munich, 81377
Germany

<https://www.tumorregister-muenchen.de/en>

<https://www.tumorregister-muenchen.de/en/facts/surv/sC7780E-ICD-10-C77-C80-Secondary-and-unknown-sites-survival.pdf>

Index of figures and tables

Fig./Tbl.		Page
1a	Relative survival by period of diagnosis (chart)	3
1b	Survival by period of diagnosis (table)	3
2a	Survival by sex (chart)	4
2b	Survival by sex (table)	4
2c	Conditional survival by sex (chart)	5
2d	Conditional survival by sex (table)	5
3a	Observed survival by age category (chart)	6
3b	Relative survival by age category (chart)	6
3c	Survival by age category (table)	7
4a	Relative survival by extent of disease (chart)	8
4b	Survival by extent of disease (table)	8

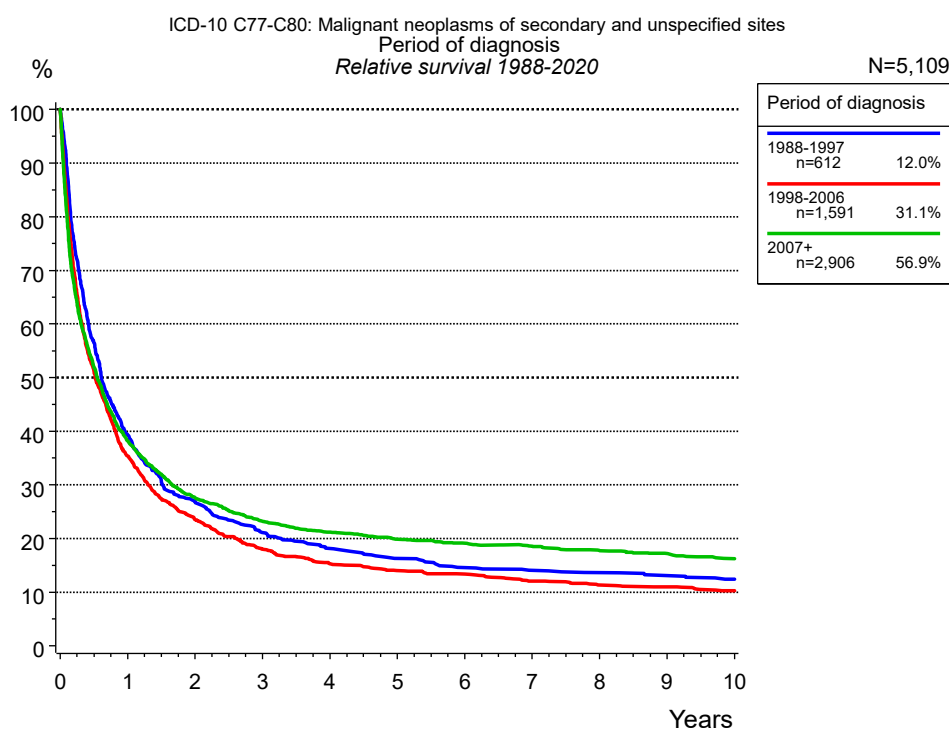


Figure 1a. Relative survival of patients with Secondary and unknown sites by period of diagnosis. Included in the evaluation are 5,109 cases diagnosed between 1988 and 2020.

The survival results of the SEER program (Surveillance, Epidemiology, and End Results) of the American National Cancer Institute (NCI) are summarized as the period of diagnosis from to , and are represented by colored diamonds in order to facilitate comparisons between MCR and SEER.

The presented survival curves are derived from clinical records with valid follow-up informations, which means that death certificate cases (DCO) cases are omitted from the analysis. With this one restriction, the MCR has provided population-based statistics since 1998, collecting data on all cancer cases in the region of southern Bavaria. Historical data of previous time periods can be heavily selected, therefore, univariate survival comparisons of the presented time periods must be carefully considered. Nonetheless, all calculable survival curves are depicted to facilitate the comparison of long time follow-up analyses of relative survival between particular cancers.

Period of diagnosis						
Years	1988-1997 n=612		1998-2006 n=1,591		2007+ n=2,906	
	obs. %	rel. %	obs. %	rel. %	obs. %	rel. %
0	100.0	100.0	100.0	100.0	100.0	100.0
1	38.1	39.3	34.1	35.4	36.9	38.2
2	25.5	26.9	22.1	23.5	26.1	27.6
3	19.5	21.1	16.5	18.0	21.3	23.2
4	16.3	18.1	13.7	15.3	19.0	21.2
5	14.2	16.3	12.3	14.0	17.3	19.9
6	12.5	14.5	11.5	13.4	16.3	19.1
7	11.8	14.1	10.1	12.1	15.4	18.6
8	11.2	13.7	9.3	11.3	14.3	17.8
9	10.5	13.1	8.9	11.0	13.5	17.2
10	9.7	12.4	8.1	10.3	12.5	16.3
Median	0.6		0.5		0.5	

Table 1b. Observed (obs.) and relative (rel.) survival of patients with Secondary and unknown sites by period of diagnosis for period 1988-2020 (N=5,109).

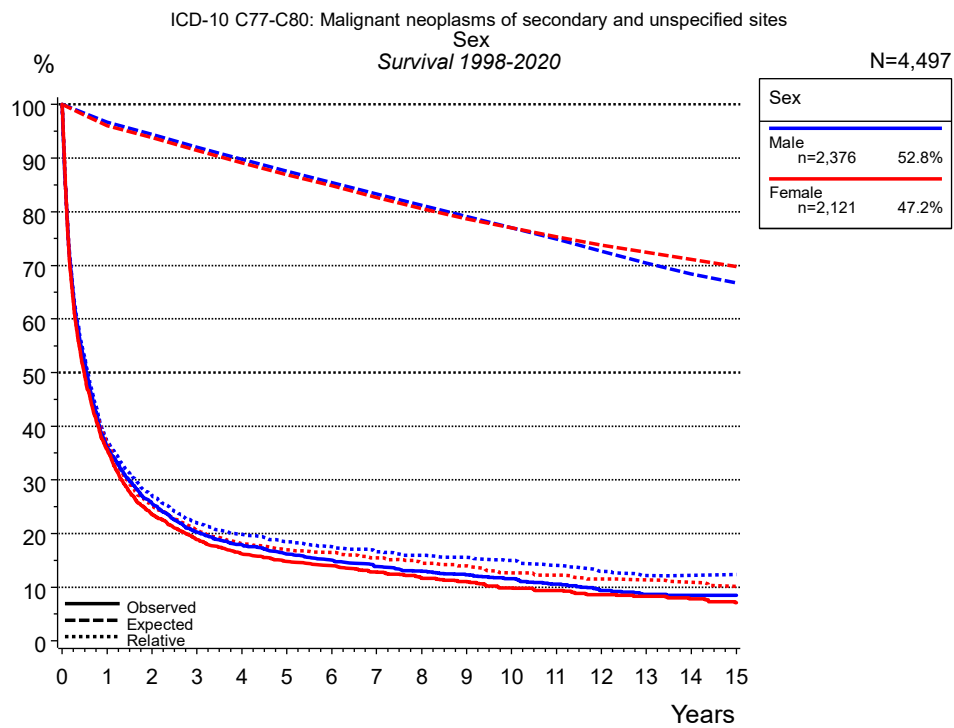


Figure 2a. Survival of patients with Secondary and unknown sites by sex. Included in the evaluation are 4,497 cases diagnosed between 1998 and 2020.

Years	Sex			
	Male n=2,376		Female n=2,121	
	obs. %	rel. %	obs. %	rel. %
0	100.0	100.0	100.0	100.0
1	36.1	37.3	35.7	37.2
2	25.7	27.1	23.5	25.1
3	20.2	22.0	18.9	20.6
4	17.9	19.9	16.2	18.1
5	16.1	18.4	14.7	16.9
6	15.0	17.5	14.0	16.5
7	13.9	16.6	12.8	15.5
8	12.9	15.9	11.7	14.5
9	12.3	15.5	11.1	14.0
10	11.6	15.0	9.8	12.7
11	10.6	14.0	9.3	12.3
12	9.4	12.9	8.6	11.5
13	8.6	12.2	8.3	11.4
14	8.5	12.2	7.8	10.9
15	8.5	12.4	7.1	10.2
Median	0.5		0.5	

Table 2b. Observed (obs.) and relative (rel.) survival of patients with Secondary and unknown sites by sex for period 1998-2020 (N=4,497).

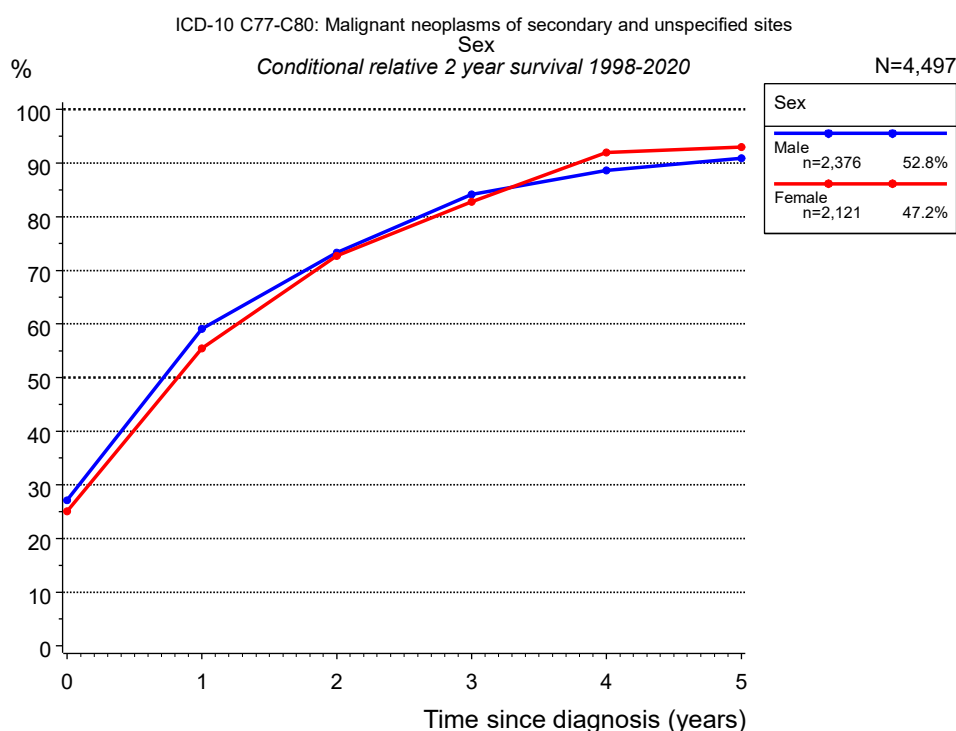


Figure 2c. Conditional relative 2-year survival of patients with Secondary and unknown sites by sex. For 4,497 of 4,497 cases diagnosed between 1998 and 2020 valid data could be obtained for this item.

Years	Male		Female	
	n	Cond. surv. % 2 yrs	n	Cond. surv. % 2 yrs
0	2,376	27.1	2,121	25.1
1	843	59.0	742	55.5
2	581	73.3	475	72.7
3	427	84.1	357	82.8
4	359	88.6	289	91.9
5	302	90.9	248	93.0

Table 2d. Conditional relative 2-year survival of patients with Secondary and unknown sites by sex for period 1998-2020 (N=4,497).

Conditional relative survival rates refer to the relative survival probability, in this case for 2 years after cancer diagnosis, compared to the age- and sex-matched population (=100 %) under the condition of being alive for a certain time period (x-axis in Figure 2a). The results illustrate to what extent the cancer induced mortality of particular subgroups declines in the subsequent years after detection of the malignancy. For instance, according to the presented survival statistics, patients in the subgroup sex="Male", who are alive at least 3 years after cancer diagnosis, the conditional relative 2-year survival rate is 84.1% (n=427).

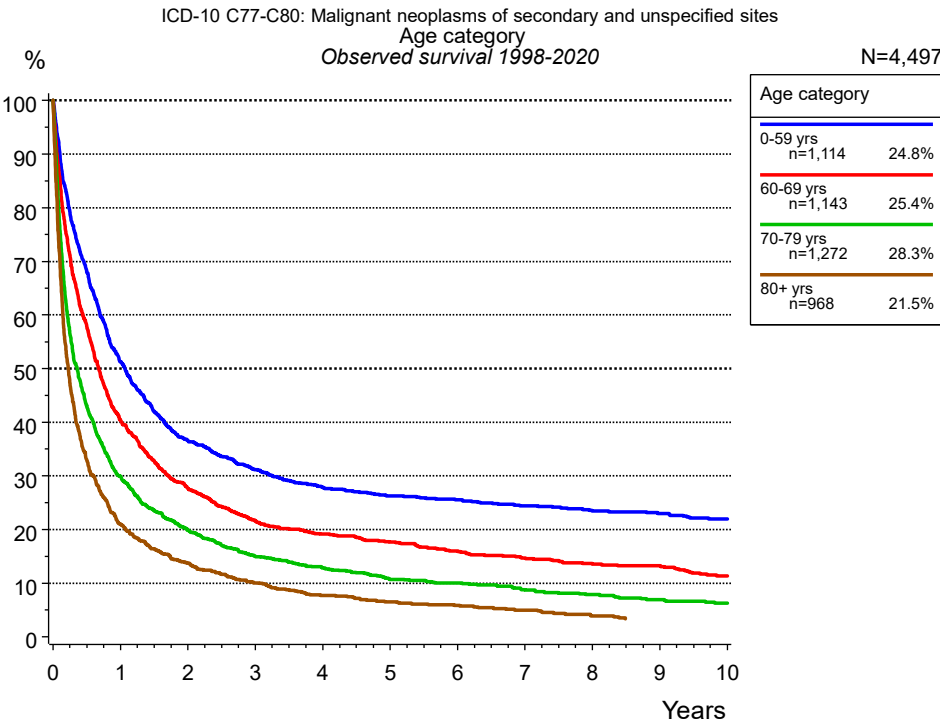


Figure 3a. Observed survival of patients with Secondary and unknown sites by age category. Included in the evaluation are 4,497 cases diagnosed between 1998 and 2020.

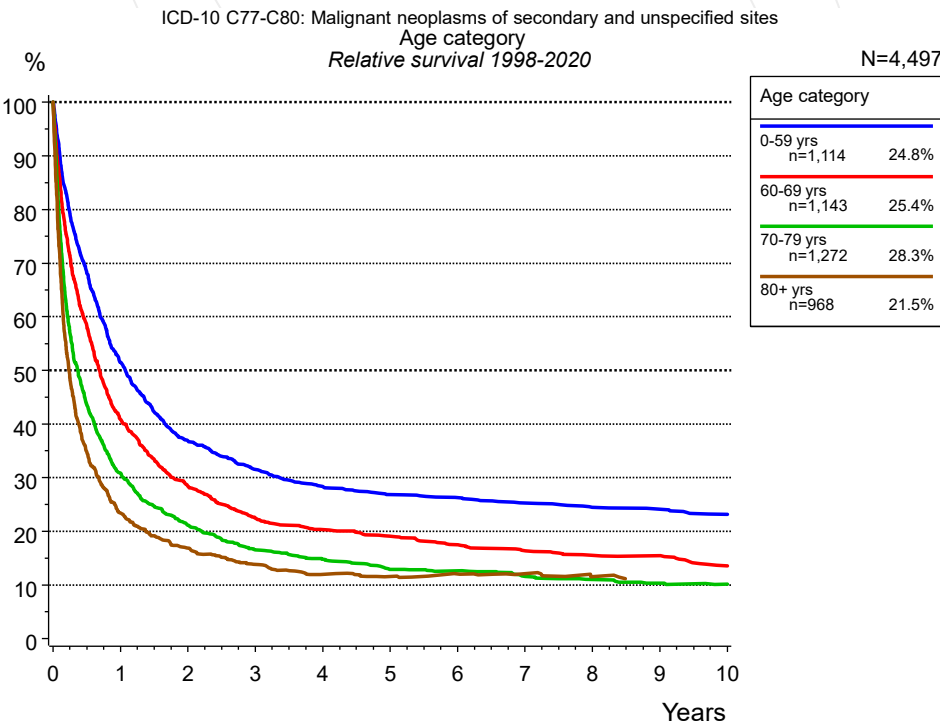


Figure 3b. Relative survival of patients with Secondary and unknown sites by age category. Included in the evaluation are 4,497 cases diagnosed between 1998 and 2020.

Years	Age category							
	0-59 yrs n=1,114		60-69 yrs n=1,143		70-79 yrs n=1,272		80+ yrs n=968	
	obs. %	rel. %	obs. %	rel. %	obs. %	rel. %	obs. %	rel. %
0	100.0	100.0	100.0	100.0	100.0	100.0	100.0	100.0
1	51.2	51.4	40.4	40.9	29.9	30.8	20.9	23.4
2	36.6	36.8	27.7	28.4	19.9	21.1	13.7	16.9
3	31.1	31.5	21.6	22.5	15.0	16.5	10.0	13.8
4	27.9	28.3	19.2	20.3	12.9	14.8	7.7	12.0
5	26.2	26.8	17.7	19.0	10.7	12.9	6.5	11.6
6	25.5	26.3	16.0	17.5	10.1	12.6	5.8	12.1
7	24.4	25.3	14.7	16.3	8.8	11.6	5.0	12.1
8	23.4	24.4	13.7	15.5	7.8	11.0	3.9	11.6
9	23.0	24.1	13.3	15.4	6.9	10.3		
10	22.0	23.1	11.4	13.6	6.3	10.2		
Median	1.1		0.7		0.4		0.2	

Table 3c. Observed (obs.) and relative (rel.) survival of patients with Secondary and unknown sites by age category for period 1998-2020 (N=4,497).

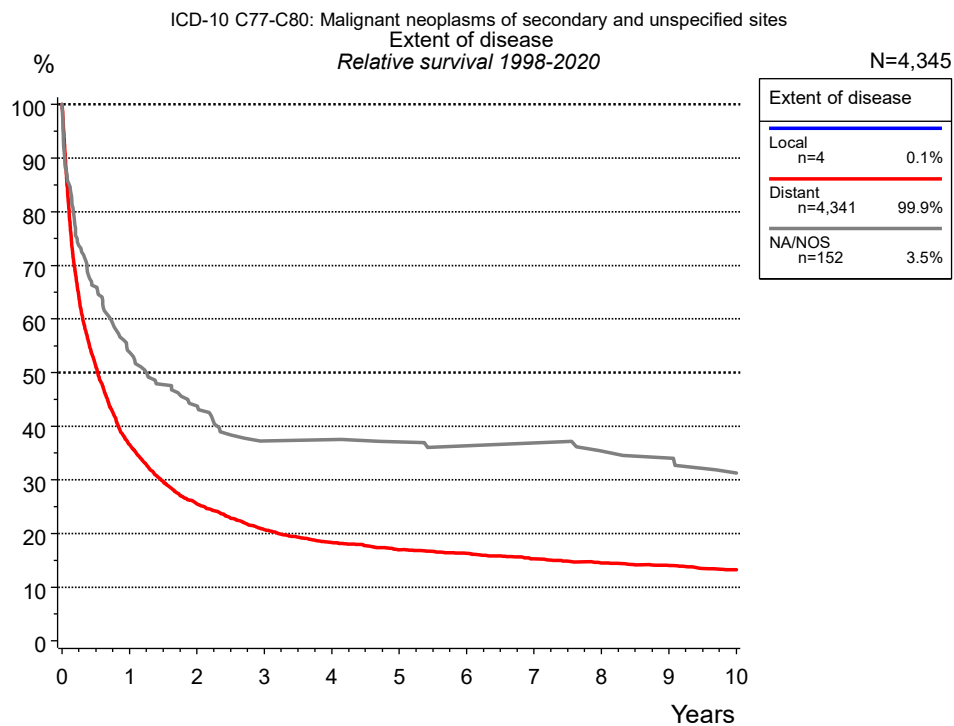


Figure 4a. Relative survival of patients with Secondary and unknown sites by extent of disease. For 4,346 of 4,497 cases diagnosed between 1998 and 2020 valid data could be obtained for this item. For a total of 4,345 cases an evaluable classification was established. The grey line represents the subgroup of 152 patients with missing values regarding extent of disease (3.4 % of 4,497 patients, the percent values of all other categories are related to n=4,345). Subgroups with sample size <20 are omitted from the chart.

Extent of disease				
Years	Distant n=4,341		NA/NOS n=152	
	obs. %	rel. %	obs. %	rel. %
0	100.0	100.0	100.0	100.0
1	35.3	36.6	51.7	53.8
2	24.0	25.5	41.0	43.8
3	19.0	20.7	33.5	37.3
4	16.4	18.3	33.5	37.5
5	14.8	17.0	32.0	37.1
6	13.9	16.3	30.4	36.4
7	12.7	15.3	30.4	36.9
8	11.8	14.5	27.8	35.3
9	11.1	14.1	26.8	34.0
10	10.3	13.2	23.8	31.2
Median	0.5		1.1	

Table 4b. Observed (obs.) and relative (rel.) survival of patients with Secondary and unknown sites by extent of disease for period 1998-2020 (N=4,345).

Shortcuts

MCR Munich Cancer Registry, Germany

NCI National Cancer Institute, USA

SEER Surveillance, Epidemiology, and End Results, USA

UICC Union for International Cancer Control, Geneva

DCO Death certificate only Death certificate provides the only notification to the registry.

NA Not available

NOS Not otherwise specified

OS Overall/Observed survival Overall/Observed survival (Kaplan-Meier estimate)

Date of entry: diagnosis
Event: death from any cause

RS Relative survival Survival compared to “general population”, ratio of observed to expected survival (Ederer II method), reflecting cancer specific survival

AS Assembled survival Assembled chart of observed, expected, relative survival

CS Conditional survival Survival probability under the condition of surviving a given period of time

TTP Time to progression Time to first progression / relapse
Date of entry: diagnosis
Event: (progression / relapse): first local-, lymph node recurrence, distant metastasis or unspecified progression

1-KM 1 minus Kaplan-Meier estimator (“inverse” Kaplan-Meier estimator)

CI Cumulative incidence
Death as competing risk (according to Kalbfleisch und Prentice)

PPS Post-progression survival Survival since first progression / relapse (Kaplan-Meier estimate)
Date of entry (progression / relapse): first local-, lymph node recurrence, distant metastasis or unspecified progression
Event: death from any cause

Recommended Citation

Munich Cancer Registry. Survival ICD-10 C77-C80: Secondary and unknown sites [Internet]. 2022 [updated 2022 Apr 15; cited 2022 Jun 1]. Available from: <https://www.tumorregister-muenchen.de/en/facts/surv/sC7780E-ICD-10-C77-C80-Secondary-and-unknown-sites-survival.pdf>

Copyright

The content of the public web site provided by the Munich Cancer Registry is available worldwide and free of charge. All documents are free to download, utilize, copy, print-out and distribute, providing that the MCR is referenced.

Disclaimer

The Munich Cancer Registry reserves the right to not be responsible for the topicality, correctness, completeness or quality of the information provided. Liability claims regarding damage caused by the use of any information provided, including any kind of information which is incomplete or incorrect, will therefore be rejected.