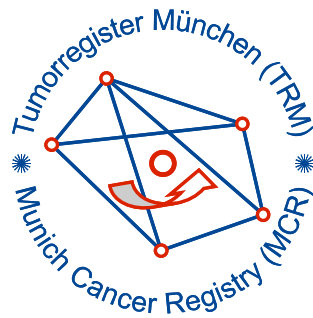


Munich Cancer Registry



- Incidence and Mortality
- Selection Matrix
- Homepage
- *Deutsch*

ICD-10 C83.1: Mantle cell lymphoma

Survival

Year of diagnosis	1988-1997	1998-2020
Patients	66	799
Diseases	66	800
Cases evaluated	61	640
Creation date	04/15/2022	
Database export	12/20/2021	
Population	4.92 m	



Munich Cancer Registry
Cancer Registry Bavaria - Upper Bavaria Regional Center
at Klinikum Grosshadern/IBE
Marchioninstr. 15
Munich, 81377
Germany

<https://www.tumorregister-muenchen.de/en>

https://www.tumorregister-muenchen.de/en/facts/surv/sC831_E-ICD-10-C83.1-Mantle-cell-lymphoma-survival.pdf

Index of figures and tables

Fig./Tbl.	Page
1a Relative survival by period of diagnosis (chart)	3
1b Survival by period of diagnosis (table)	3
2a Survival by sex (chart)	4
2b Survival by sex (table)	4
2c Conditional survival by sex (chart)	5
2d Conditional survival by sex (table)	5
3a Observed survival by age category (chart)	6
3b Relative survival by age category (chart)	6
3c Survival by age category (table)	7
4a Relative survival by Ann Arbor staging (chart)	8
4b Survival by Ann Arbor staging (table)	8
5a Time to first progression (chart)	9
5b Time to first progression (table)	9
5c Observed post-progression survival (chart)	10
5d Observed post-progression survival (table)	10
5e Observed post-progression survival by period of progression (chart)	11
5f Observed post-progression survival by period of progression (table)	11

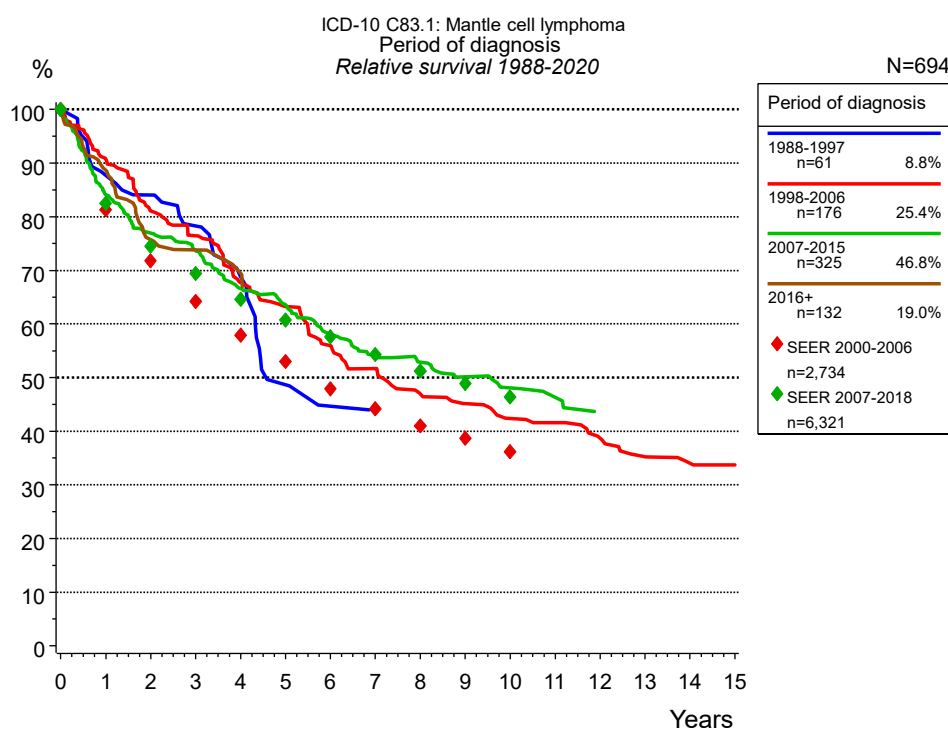


Figure 1a. Relative survival of patients with Mantle cell lymphoma by period of diagnosis. Included in the evaluation are 694 cases diagnosed between 1988 and 2020.

The survival results of the SEER program (Surveillance, Epidemiology, and End Results) of the American National Cancer Institute (NCI) are summarized as the period of diagnosis from 2000 to 2018, and are represented by colored diamonds in order to facilitate comparisons between MCR and SEER.

The presented survival curves are derived from clinical records with valid follow-up informations, which means that death certificate cases (DCO) cases are omitted from the analysis. With this one restriction, the MCR has provided population-based statistics since 1998, collecting data on all cancer cases in the region of southern Bavaria. Historical data of previous time periods can be heavily selected, therefore, univariate survival comparisons of the presented time periods must be carefully considered. Nonetheless, all calculable survival curves are depicted to facilitate the comparison of long time follow-up analyses of relative survival between particular cancers.

Years	Period of diagnosis							
	1988-1997 n=61		1998-2006 n=176		2007-2015 n=325		2016+ n=132	
	obs. %	rel. %	obs. %	rel. %	obs. %	rel. %	obs. %	rel. %
0	100.0	100.0	100.0	100.0	100.0	100.0	100.0	100.0
1	85.0	87.7	88.6	90.8	82.3	84.1	86.8	88.7
2	78.3	84.0	77.1	81.1	73.5	76.9	72.2	75.7
3	69.9	78.2	71.3	76.4	68.8	73.7	69.0	73.8
4	59.7	68.7	61.5	67.7	60.3	66.6	64.3	69.5
5	40.9	48.7	56.2	63.3	55.9	63.6		
6	35.8	44.7	49.1	56.0	49.8	58.1		
7	34.1	42.6	44.3	51.7	44.8	53.7		
8			38.9	47.0	43.0	52.9		
9			36.5	45.2	39.6	50.1		
10			33.4	42.4	37.1	48.1		
11			32.2	41.6	34.5	46.3		
12			29.2	38.7	31.5	43.5		
13			26.2	35.3				
14			24.3	34.0				
15			23.7	33.7				
Median	4.3		5.8		6.0			

Table 1b. Observed (obs.) and relative (rel.) survival of patients with Mantle cell lymphoma by period of diagnosis for period 1988-2020 (N=694).

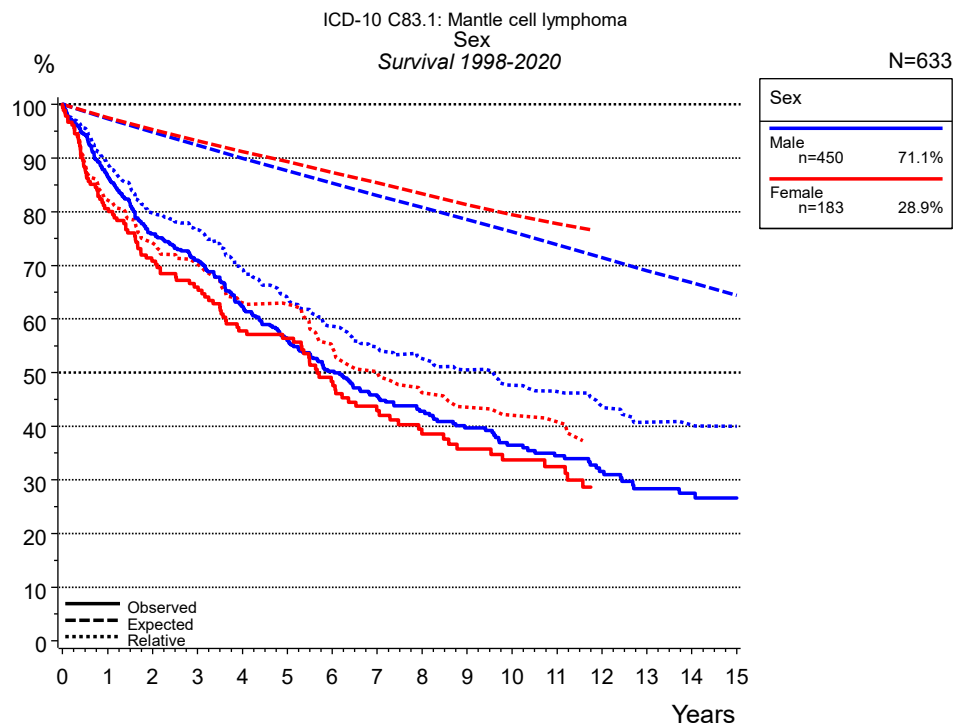


Figure 2a. Survival of patients with Mantle cell lymphoma by sex. Included in the evaluation are 633 cases diagnosed between 1998 and 2020.

Years	Sex			
	Male n=450		Female n=183	
	obs. %	rel. %	obs. %	rel. %
0	100.0	100.0	100.0	100.0
1	86.7	89.0	80.6	82.2
2	75.8	79.8	70.8	74.1
3	71.0	76.6	66.0	70.2
4	62.4	69.2	57.8	63.0
5	56.0	63.8	56.4	62.8
6	50.2	58.6	48.4	54.9
7	45.5	54.8	42.9	50.0
8	42.7	52.7	38.5	46.2
9	39.7	50.5	35.7	43.6
10	36.5	47.7	33.7	42.0
11	34.5	46.5	32.5	40.8
12	31.6	43.7	28.7	36.1
13	28.4	40.7		
14	27.5	40.2		
15	26.7	40.0		
Median	6.0		5.7	

Table 2b. Observed (obs.) and relative (rel.) survival of patients with Mantle cell lymphoma by sex for period 1998-2020 (N=633).

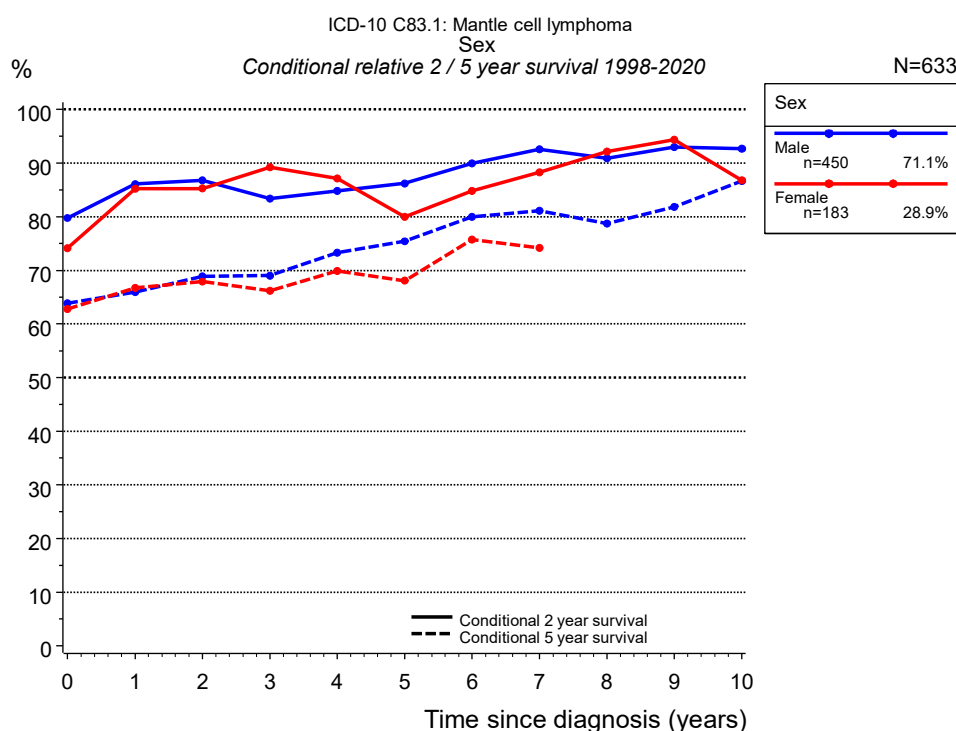


Figure 2c. Conditional relative 2 / 5-year survival of patients with Mantle cell lymphoma by sex. For 633 of 633 cases diagnosed between 1998 and 2020 valid data could be obtained for this item.

Years	Sex					
	Male			Female		
	n	Cond. surv. % 2 yrs	5 yrs	n	Cond. surv. % 2 yrs	5 yrs
0	450	79.8	63.8	183	74.1	62.8
1	380	86.1	65.9	142	85.2	66.7
2	319	86.7	68.9	120	85.2	67.9
3	290	83.4	69.0	107	89.3	66.2
4	241	84.8	73.3	88	87.2	69.9
5	203	86.2	75.4	79	80.0	68.1
6	166	89.9	80.0	63	84.8	75.7
7	136	92.6	81.1	50	88.3	74.2
8	117	90.9	78.8	44	92.1	
9	95	93.0	81.8	38	94.3	
10	75	92.7	86.6	32	86.8	

Table 2d. Conditional relative 2 / 5-year survival of patients with Mantle cell lymphoma by sex for period 1998-2020 (N=633).

Conditional relative survival rates refer to the relative survival probability, in this case for 2 and 5 years after cancer diagnosis, compared to the age- and sex-matched population (=100 %) under the condition of being alive for a certain time period (x-axis in Figure 2a). The results illustrate to what extent the cancer induced mortality of particular subgroups declines in the subsequent years after detection of the malignancy. For instance, according to the presented survival statistics, patients in the subgroup sex="Male", who are alive at least 3 years after cancer diagnosis, the conditional relative 2-year survival rate is 83.4% (n=290).

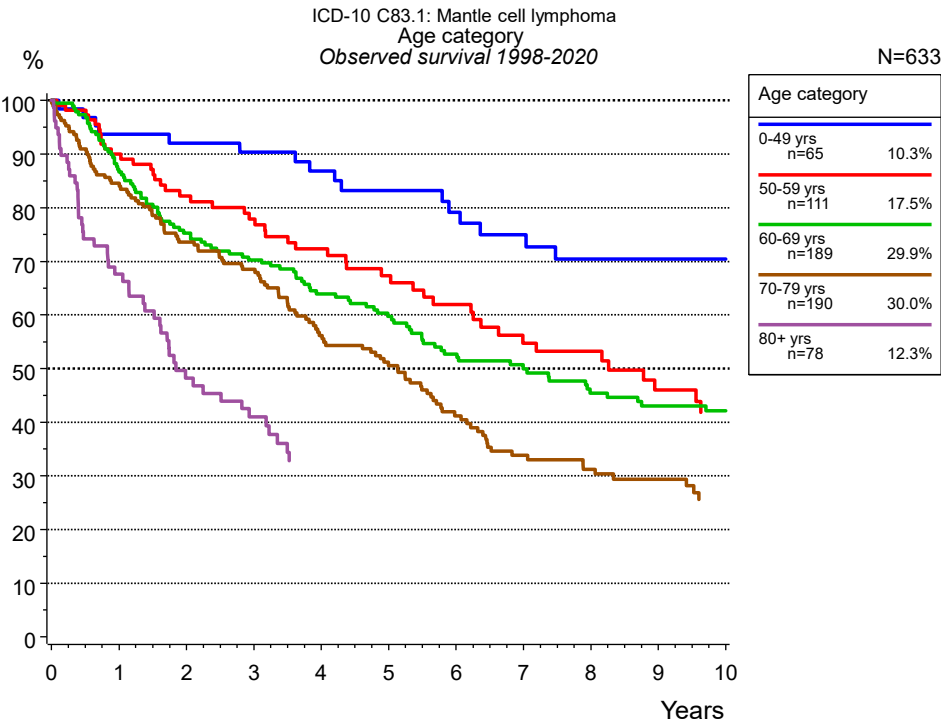


Figure 3a. Observed survival of patients with Mantle cell lymphoma by age category. Included in the evaluation are 633 cases diagnosed between 1998 and 2020.

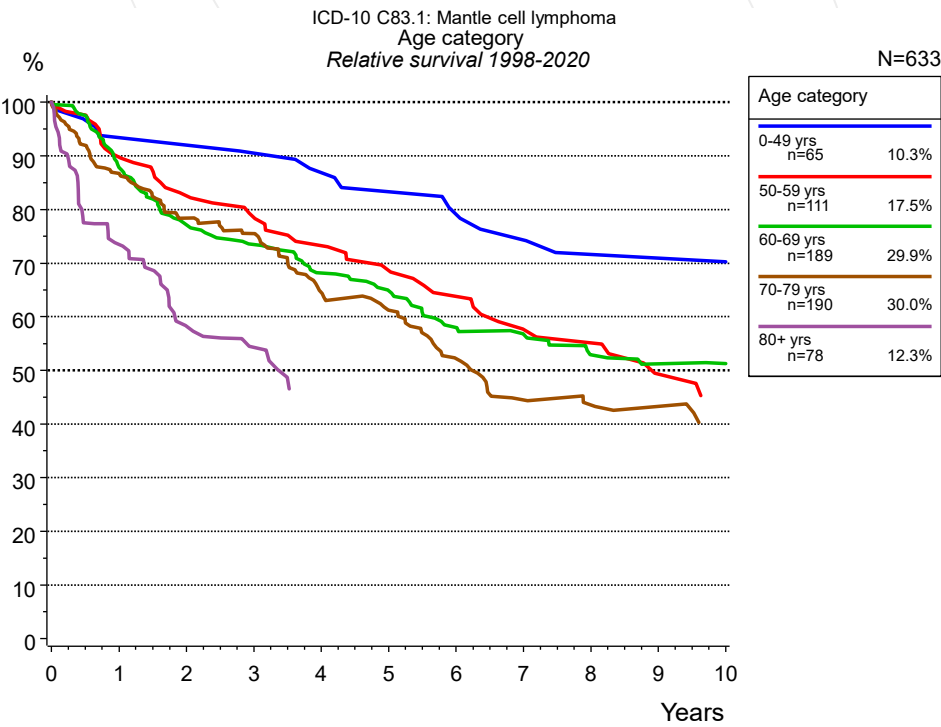


Figure 3b. Relative survival of patients with Mantle cell lymphoma by age category. Included in the evaluation are 633 cases diagnosed between 1998 and 2020.

Years	Age category									
	0-49 yrs n=65		50-59 yrs n=111		60-69 yrs n=189		70-79 yrs n=190		80+ yrs n=78	
	obs. %	rel. %	obs. %	rel. %	obs. %	rel. %	obs. %	rel. %	obs. %	rel. %
0	100.0	100.0	100.0	100.0	100.0	100.0	100.0	100.0	100.0	100.0
1	93.7	93.4	90.0	89.8	86.6	87.8	84.5	86.7	67.6	73.5
2	92.0	92.0	82.2	82.5	75.2	77.1	73.6	78.4	48.2	58.2
3	90.3	90.5	77.9	78.5	70.3	73.5	68.5	75.5	41.0	54.3
4	86.9	86.9	72.3	73.3	63.9	68.1	56.2	64.5		
5	83.2	83.3	67.3	68.6	59.7	64.9	50.6	61.2		
6	79.1	79.1	62.0	63.8	52.8	58.0	41.2	52.2		
7	75.0	74.3	54.8	57.6	49.9	56.8	33.8	44.5		
8	70.4	71.6	53.2	55.1	45.4	52.9	31.2	43.5		
9	70.4	70.9	46.0	49.3	43.0	51.2	29.4	43.3		
10	70.4	70.2			42.1	51.2				
Median			8.3		7.0		5.1		1.8	

Table 3c. Observed (obs.) and relative (rel.) survival of patients with Mantle cell lymphoma by age category for period 1998-2020 (N=633).

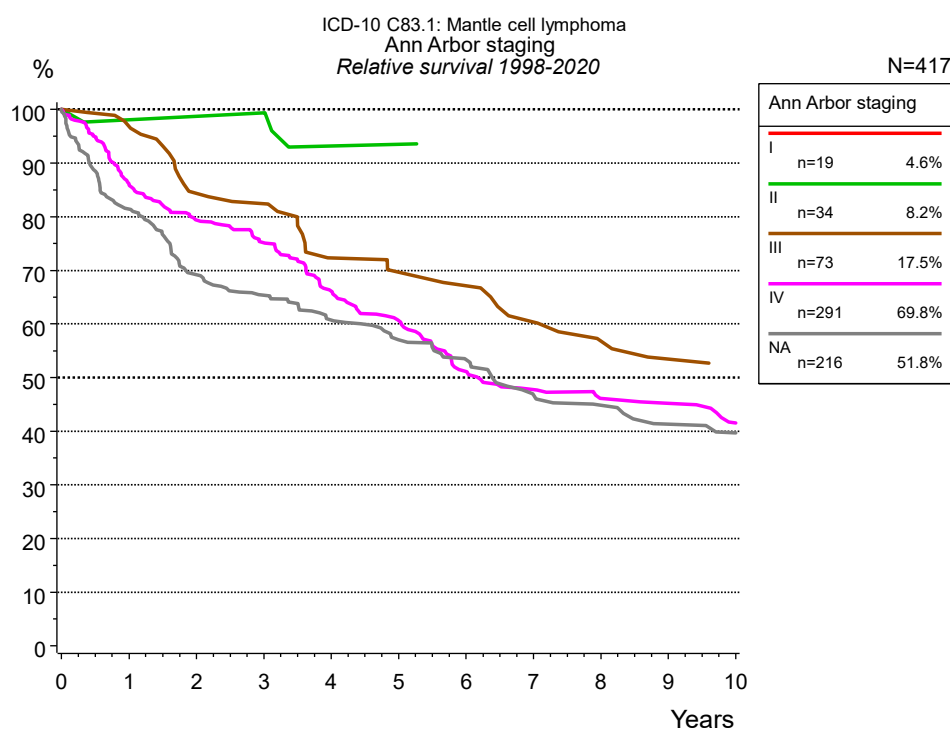


Figure 4a. Relative survival of patients with Mantle cell lymphoma by Ann Arbor staging. For 417 of 633 cases diagnosed between 1998 and 2020 valid data could be obtained for this item. The grey line represents the subgroup of 216 patients with missing values regarding Ann Arbor staging (34.1 % of 633 patients, the percent values of all other categories are related to n=417). Subgroups with sample size <20 are omitted from the chart.

Ann Arbor staging								
Years	II n=34		III n=73		IV n=291		NA n=216	
	obs. %	rel. %	obs. %	rel. %	obs. %	rel. %	obs. %	rel. %
0	100.0	100.0	100.0	100.0	100.0	100.0	100.0	100.0
1	97.1	98.1	95.8	96.9	84.4	85.9	78.9	81.4
2	97.1	98.7	81.2	84.3	76.3	79.4	65.0	69.2
3	97.1	99.4	78.2	82.4	71.0	75.1	59.0	65.4
4	86.9	93.1	65.7	72.3	61.2	66.1	53.2	60.7
5	86.9	93.4	62.4	69.7	54.9	60.6	48.1	57.0
6	83.4	93.4	59.2	67.1	45.6	51.1	43.7	53.3
7			52.5	60.3	41.6	47.8	37.2	46.7
8			47.2	56.8	38.9	46.2	34.7	44.8
9			43.5	53.5	37.1	45.2	31.0	41.3
10			41.5	52.5	33.4	41.5	29.0	39.7
Median			7.4		5.5		4.8	

Table 4b. Observed (obs.) and relative (rel.) survival of patients with Mantle cell lymphoma by Ann Arbor staging for period 1998-2020 (N=417).

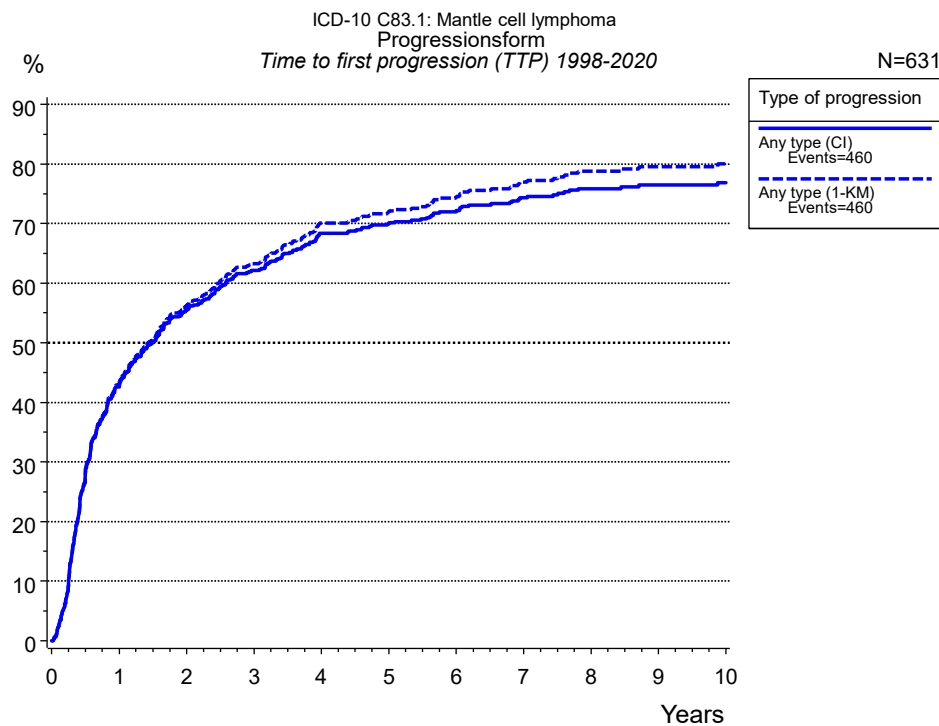


Figure 5a. Time to first progression of 631 patients with Mantle cell lymphoma diagnosed between 1998 and 2020 (in solid cancers M0 only) estimated by cumulative incidence function (CI, solid line) accounting for death as competing risk and by inverse Kaplan-Meier estimate (1-KM, dashed line). The frequency of events may be underestimated due to underreporting.

	Type of progression	
	Any type (CI)	Any type (1-KM)
N	631	631
Events	455	455
compet.	39	
Years	%	%
0	0.0	0.0
1	42.9	43.2
2	55.5	56.3
3	62.1	63.3
4	68.4	70.1
5	69.9	71.9
6	72.0	74.3
7	74.3	77.0
8	75.9	78.8
9	76.5	79.6
10	76.8	80.0

Table 5b. Time to first progression of patients with Mantle cell lymphoma for period 1998-2020 (N=631), also showing the total of progression events (Events) and of deaths as competing risk (compet.).

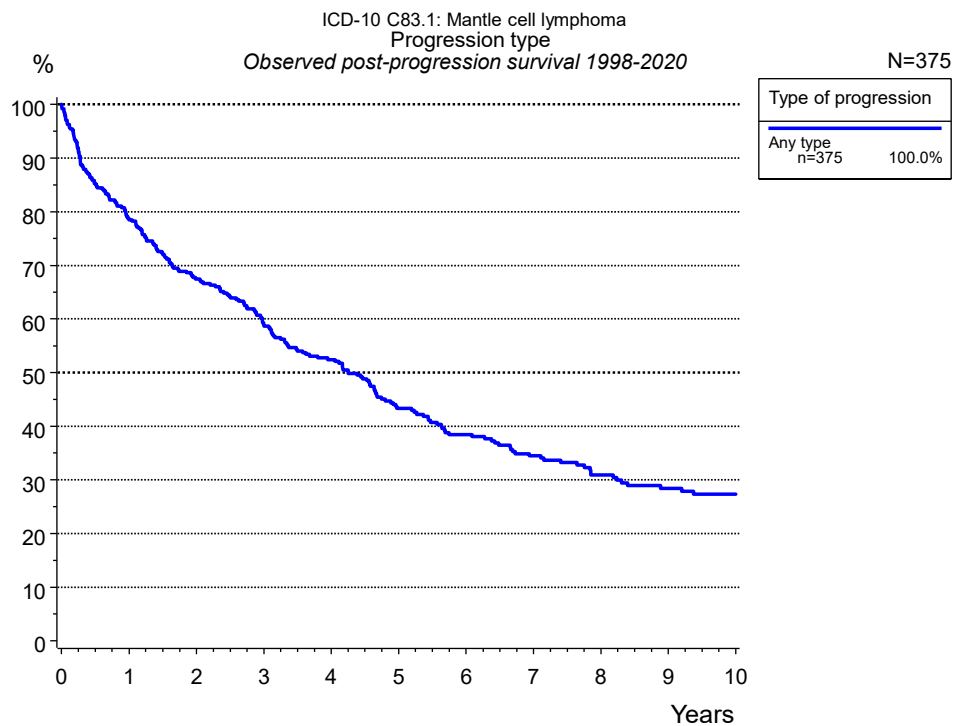


Figure 5c. Observed post-progression survival of 375 patients with Mantle cell lymphoma diagnosed between 1998 and 2020. These 375 patients with documented progression events during their course of disease represent 59.4 % of the totally 631 evaluated cases. Patients with cancer relapse documented via death certificates only were excluded (n=85, 13.5 %).

Medical record documentation often lacks the linguistic severity to distinguish between local relapse, regional lymph node metastasis and distant spread in solid cancers. Frequently, the statement “not specified” is the only information in registries regarding relapse of the disease. The category “Any type” denotes all cases who suffered from at least one relapse during the course of disease (incl. primary M1-status). Although, the real number of relapsed patients is likely to be much higher. The accumulated percentage of patients with local relapse or distant metastasis exceeds the 100 % value because patients are potentially considered in more than one subgroup.

Type of progression	
Any type n=375	
Years	%
0	100.0
1	78.5
2	67.4
3	58.9
4	52.5
5	43.3
6	38.4
7	34.5
8	30.9
9	28.5
10	27.4

Table 5d. Observed post-progression survival of patients with Mantle cell lymphoma for period 1998-2020 (N=375).

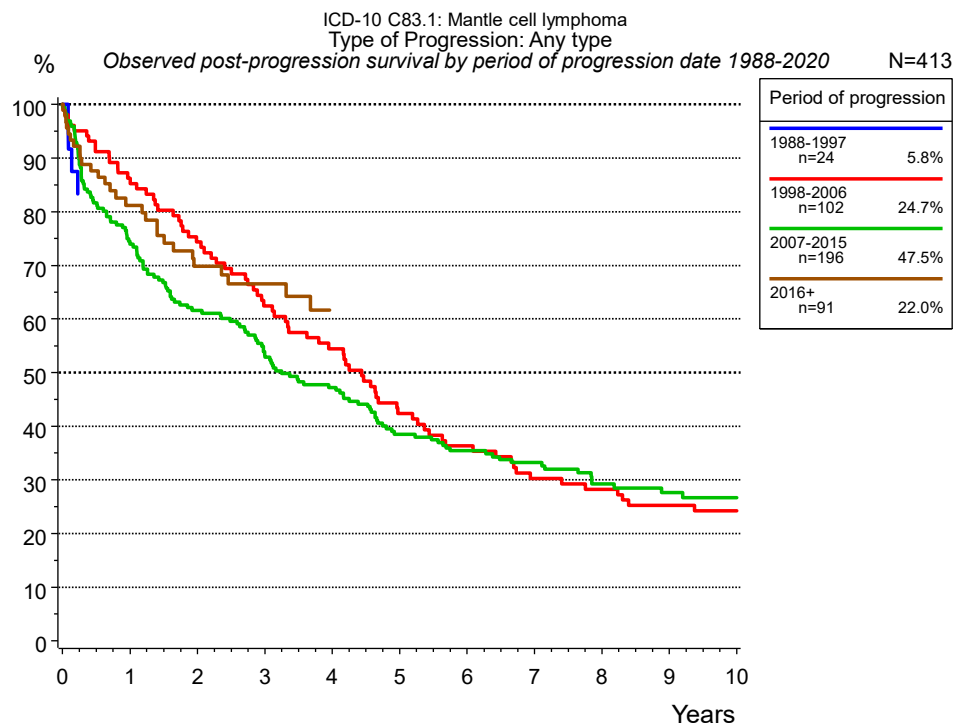


Figure 5e. Observed post-progression (any type) survival of 413 patients with Mantle cell lymphoma diagnosed between 1988 and 2020 by period of progression.

Years	Period of progression			
	1988-1997 n=24 %	1998-2006 n=102 %	2007-2015 n=196 %	2016+ n=91 %
0	100.0	100.0	100.0	100.0
1		85.2	73.9	81.2
2		74.3	61.6	69.8
3		62.4	53.4	66.5
4		54.5	47.2	61.6
5		42.4	38.5	
6		36.3	35.4	
7		30.3	33.2	
8		28.2	29.2	
9		25.2	27.7	
10		24.2	26.7	

Table 5f. Observed post-progression (any type) survival of patients with Mantle cell lymphoma for period 1988-2020 by period of progression (N=413).

Shortcuts

MCR Munich Cancer Registry, Germany

NCI National Cancer Institute, USA

SEER Surveillance, Epidemiology, and End Results, USA

UICC Union for International Cancer Control, Geneva

DCO Death certificate only Death certificate provides the only notification to the registry.

NA Not available

NOS Not otherwise specified

OS Overall/Observed survival Overall/Observed survival (Kaplan-Meier estimate)
Date of entry: diagnosis
Event: death from any cause

RS Relative survival Survival compared to “general population”,
ratio of observed to expected survival (Ederer II method),
reflecting cancer specific survival

AS Assembled survival Assembled chart of
observed, expected, relative survival

CS Conditional survival Survival probability under the condition of surviving
a given period of time

TTP Time to progression Time to first progression / relapse
Date of entry: diagnosis
Event: (progression / relapse): first local-, lymph node recurrence,
distant metastasis or unspecified progression

1-KM 1 minus Kaplan-Meier estimator
 (“inverse” Kaplan-Meier estimator)

CI Cumulative incidence
Death as competing risk (according to Kalbfleisch und Prentice)

PPS Post-progression survival Survival since first progression / relapse (Kaplan-Meier estimate)
Date of entry (progression / relapse): first local-, lymph node
recurrence, distant metastasis or unspecified progression
Event: death from any cause

Recommended Citation

Munich Cancer Registry. Survival ICD-10 C83.1: Mantle cell lymphoma [Internet]. 2022 [updated 2022 Apr 15; cited 2022 Jun 1]. Available from: https://www.tumorregister-muenchen.de/en/facts/surv/sC831_E-ICD-10-C83.1-Mantle-cell-lymphoma-survival.pdf

Copyright

The content of the public web site provided by the Munich Cancer Registry is available worldwide and free of charge. All documents are free to download, utilize, copy, print-out and distribute, providing that the MCR is referenced.

Disclaimer

The Munich Cancer Registry reserves the right to not be responsible for the topicality, correctness, completeness or quality of the information provided. Liability claims regarding damage caused by the use of any information provided, including any kind of information which is incomplete or incorrect, will therefore be rejected.