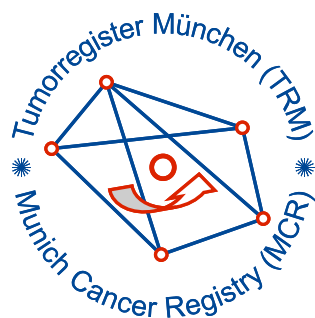


Munich Cancer Registry



- ▶ Incidence and Mortality
- ▶ Selection Matrix
- ▶ Homepage
- ▶ *Deutsch*

ICD-10 C85: Non-Hodgkin lymphoma NOS

Survival

Year of diagnosis	1988-1997	1998-2019
Patients	867	2,671
Diseases	868	2,672
Cases evaluated	747	1,328
Creation date	01/28/2021	
Database export	01/07/2021	
Population	4.92 m	



Munich Cancer Registry
Cancer Registry Bavaria - Upper Bavaria Regional Center
at Klinikum Grosshadern/IBE
Marchioninstr. 15
Munich, 81377
Germany

<https://www.tumorregister-muenchen.de/en>

https://www.tumorregister-muenchen.de/en/facts/surv/sC85__E-ICD-10-C85-Non-Hodgkin-lymphoma-NOS-survival.pdf

Index of figures and tables

Fig./Tbl.		Page
1a	Relative survival by period of diagnosis (chart)	3
1b	Survival by period of diagnosis (table)	3
2a	Survival by sex (chart)	4
2b	Survival by sex (table)	4
2c	Conditional survival by sex (chart)	5
2d	Conditional survival by sex (table)	5
3a	Relative survival by age category (chart)	6
3b	Survival by age category (table)	6
4a	Relative survival by Ann Arbor staging (chart)	7
4b	Survival by Ann Arbor staging (table)	7
5a	Time to first progression (chart)	8
5b	Time to first progression (table)	8
5c	Observed post-progression survival (chart)	9
5d	Observed post-progression survival (table)	9
5e	Observed post-progression survival by period of progression (chart)	10
5f	Observed post-progression survival by period of progression (table)	10

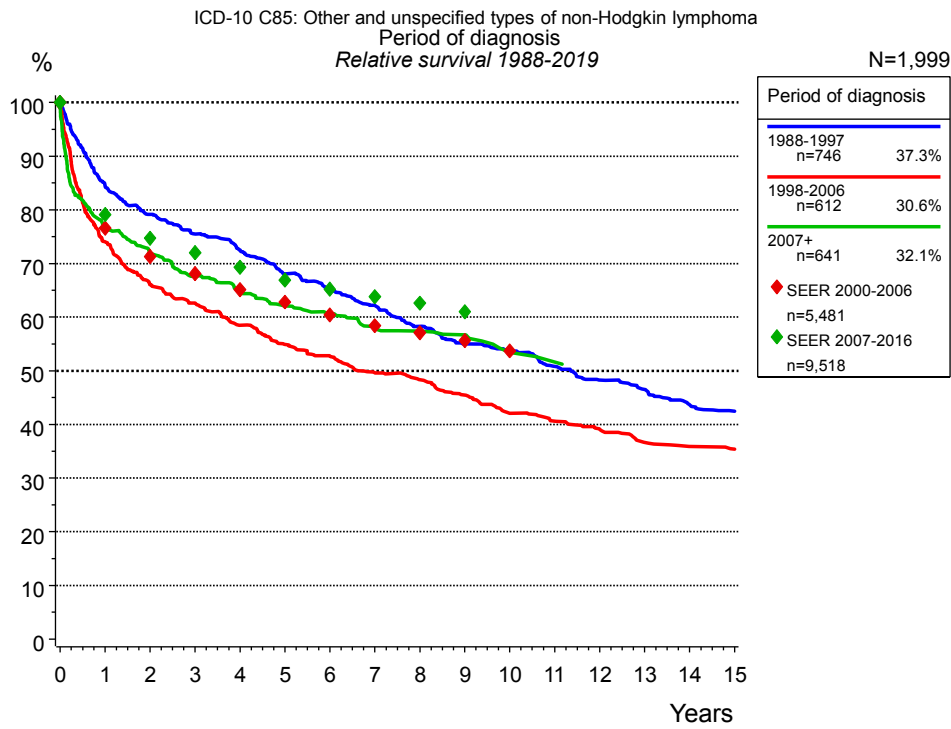


Figure 1a. Relative survival of patients with Non-Hodgkin lymphoma NOS by period of diagnosis. Included in the evaluation are 1,999 cases diagnosed between 1988 and 2019.

The survival results of the SEER program (Surveillance, Epidemiology, and End Results) of the American National Cancer Institute (NCI) are summarized as the period of diagnosis from 2000 to 2016, and are represented by colored diamonds in order to facilitate comparisons between MCR and SEER.

The presented survival curves are derived from clinical records with valid follow-up informations, which means that death certificate cases (DCO) cases are omitted from the analysis. With this one restriction, the MCR has provided population-based statistics since 1998, collecting data on all cancer cases in the region of southern Bavaria. Historical data of previous time periods can be heavily selected, therefore, univariate survival comparisons of the presented time periods must be carefully considered. Nonetheless, all calculable survival curves are depicted to facilitate the comparison of long time follow-up analyses of relative survival between particular cancers.

Years	Period of diagnosis					
	1988-1997 n=746		1998-2006 n=612		2007+ n=641	
	obs. %	rel. %	obs. %	rel. %	obs. %	rel. %
0	100.0	100.0	100.0	100.0	100.0	100.0
1	82.4	84.4	71.7	74.0	74.2	76.6
2	75.8	79.2	62.3	66.0	67.8	71.9
3	70.9	75.5	57.8	62.6	62.2	67.7
4	66.8	72.5	52.6	58.5	58.2	64.6
5	61.3	68.0	48.2	54.9	54.5	62.1
6	57.3	64.9	45.3	52.7	52.3	60.7
7	53.7	62.2	41.8	49.6	49.4	58.2
8	49.5	58.3	39.8	48.3	47.5	57.4
9	45.7	55.0	36.8	45.5	46.5	56.7
10	43.7	53.7	33.2	42.0	42.6	53.4
11	40.7	50.8	31.6	40.6	41.5	51.6
12	37.8	48.3	29.8	39.1		
13	35.9	46.5	27.4	36.7		
14	33.0	43.7	26.3	35.9		
15	31.6	42.5	25.6	35.3		
Median	7.8		4.6		6.7	

Table 1b. Observed (obs.) and relative (rel.) survival of patients with Non-Hodgkin lymphoma NOS by period of diagnosis for period 1988-2019 (N=1,999).

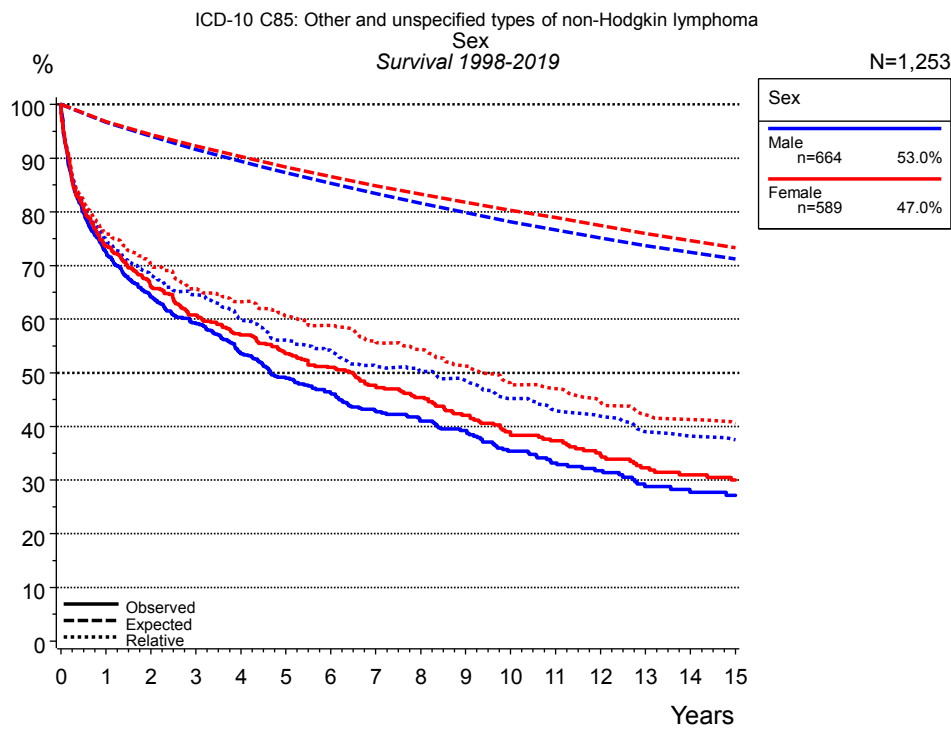


Figure 2a. Survival of patients with Non-Hodgkin lymphoma NOS by sex. Included in the evaluation are 1,253 cases diagnosed between 1998 and 2019.

Years	Sex			
	Male n=664		Female n=589	
	obs. %	rel. %	obs. %	rel. %
0	100.0	100.0	100.0	100.0
1	72.5	74.8	73.5	75.9
2	64.1	68.1	66.1	69.9
3	59.3	64.6	60.8	65.7
4	53.7	59.9	57.1	63.2
5	49.0	56.1	53.6	60.6
6	46.2	54.1	51.0	58.8
7	42.9	51.2	47.7	55.9
8	41.0	50.3	45.4	54.3
9	39.2	48.6	42.1	51.3
10	35.4	45.2	38.3	47.7
11	33.2	43.0	37.3	47.1
12	31.8	41.9	34.7	44.7
13	28.8	39.0	32.3	42.2
14	27.7	38.2	31.0	41.3
15	27.1	37.5	30.0	40.5
Median	4.7		6.5	

Table 2b. Observed (obs.) and relative (rel.) survival of patients with Non-Hodgkin lymphoma NOS by sex for period 1998-2019 (N=1,253).

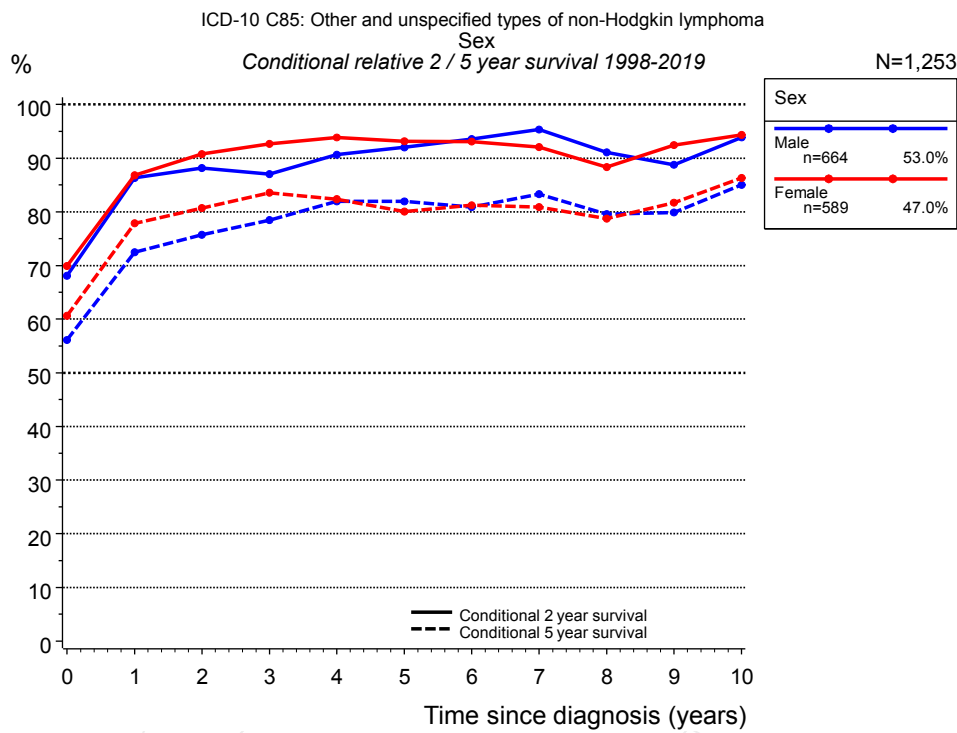


Figure 2c. Conditional relative 2 / 5-year survival of patients with Non-Hodgkin lymphoma NOS by sex. For 1,253 of 1,253 cases diagnosed between 1998 and 2019 valid data could be obtained for this item.

Years	Sex					
	n	Male		n	Female	
		Cond. surv. % 2 yrs	Cond. surv. % 5 yrs		Cond. surv. % 2 yrs	Cond. surv. % 5 yrs
0	664	68.1	56.1	589	69.9	60.6
1	463	86.3	72.5	410	86.8	77.9
2	397	88.2	75.7	358	90.8	80.7
3	345	87.1	78.5	314	92.7	83.5
4	281	90.6	81.9	287	93.9	82.4
5	238	92.0	82.0	254	93.2	80.0
6	217	93.6	80.9	229	93.1	81.3
7	185	95.3	83.3	192	92.1	80.9
8	167	91.0	79.6	171	88.3	78.7
9	147	88.7	79.9	144	92.4	81.7
10	120	93.9	85.0	118	94.3	86.3

Table 2d. Conditional relative 2 / 5-year survival of patients with Non-Hodgkin lymphoma NOS by sex for period 1998-2019 (N=1,253).

Conditional relative survival rates refer to the relative survival probability, in this case for 2 and 5 years after cancer diagnosis, compared to the age- and sex-matched population (=100 %) under the condition of being alive for a certain time period (x-axis in Figure 2a). The results illustrate to what extent the cancer induced mortality of particular subgroups declines in the subsequent years after detection of the malignancy. For instance, according to the presented survival statistics, patients in the subgroup sex="Male", who are alive at least 3 years after cancer diagnosis, the conditional relative 2-year survival rate is 87.1% (n=345).

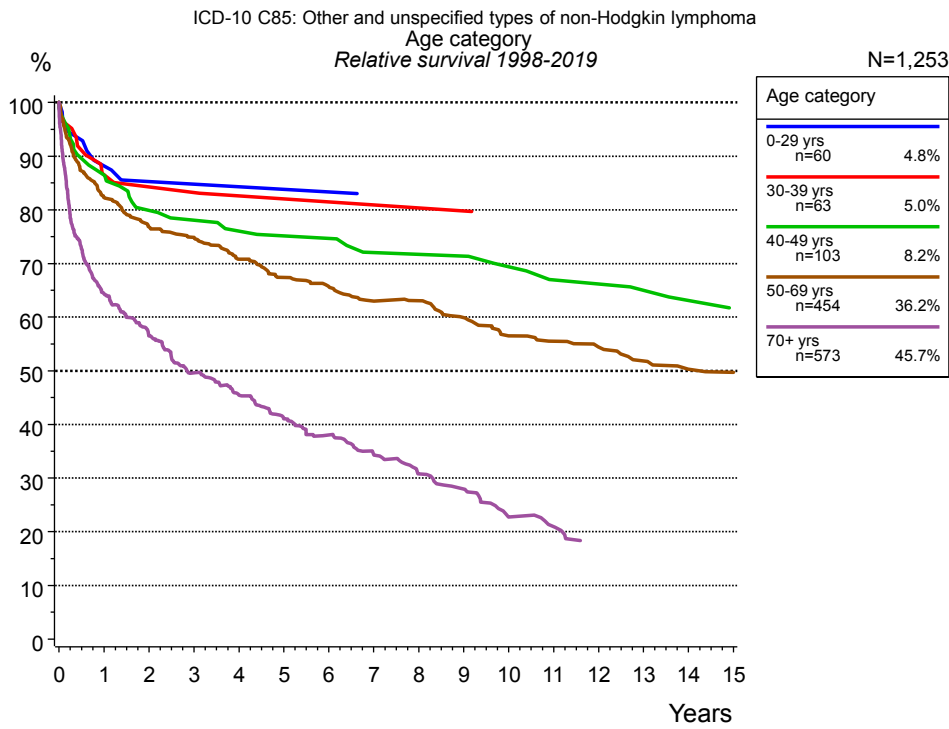


Figure 3a. Relative survival of patients with Non-Hodgkin lymphoma NOS by age category. Included in the evaluation are 1,253 cases diagnosed between 1998 and 2019.

Years	Age category									
	0-29 yrs n=60		30-39 yrs n=63		40-49 yrs n=103		50-69 yrs n=454		70+ yrs n=573	
	obs. %	rel. %	obs. %	rel. %	obs. %	rel. %	obs. %	rel. %	obs. %	rel. %
0	100.0	100.0	100.0	100.0	100.0	100.0	100.0	100.0	100.0	100.0
1	89.2	88.2	86.7	86.5	87.2	86.5	81.5	82.3	60.5	64.4
2	85.5	85.3	85.0	84.2	80.1	79.9	75.3	76.8	50.0	56.5
3	85.5	84.8	85.0	83.2	78.0	78.0	72.6	74.9	41.4	49.6
4	85.5	84.3	82.8	82.6	75.8	76.0	67.6	70.8	35.8	45.4
5	85.5	83.8	82.8	82.0	74.6	75.2	63.6	67.4	30.3	41.1
6	85.5	83.3	82.8	81.5	74.6	74.7	61.1	65.7	26.4	38.0
7			82.8	80.9	70.7	72.0	57.9	63.0	22.7	34.3
8			82.8	80.3	70.7	71.7	57.0	63.1	18.6	30.8
9			82.8	79.8	70.7	71.4	53.2	59.9	16.0	28.0
10					67.9	69.4	49.0	56.5	11.8	22.7
11					64.5	66.9	47.3	55.5	10.3	20.9
12					64.5	66.2	45.3	54.4		
13					62.6	65.0	42.6	51.8		
14					60.5	63.1	39.9	50.3		
15					58.1	61.7	39.2	49.7		
Median							9.8		2.0	

Table 3b. Observed (obs.) and relative (rel.) survival of patients with Non-Hodgkin lymphoma NOS by age category for period 1998-2019 (N=1,253).

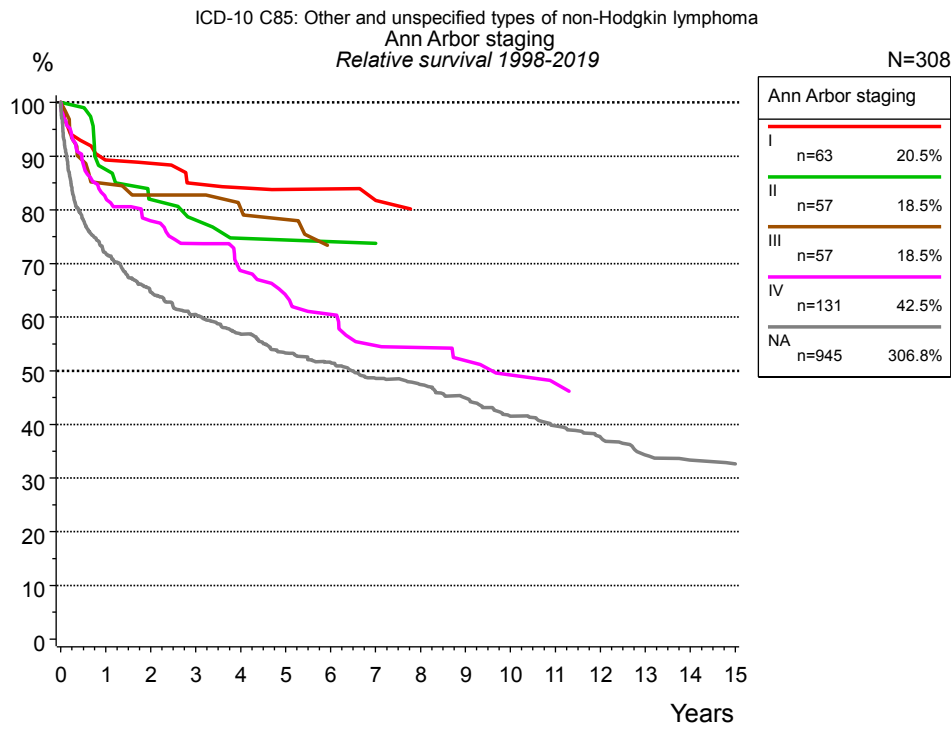


Figure 4a. Relative survival of patients with Non-Hodgkin lymphoma NOS by Ann Arbor staging. For 309 of 1,253 cases diagnosed between 1998 and 2019 valid data could be obtained for this item. For a total of 308 cases an evaluable classification was established. The grey line represents the subgroup of 945 patients with missing values regarding Ann Arbor staging (75.4 % of 1,253 patients, the percent values of all other categories are related to n=308).

Years	Ann Arbor staging									
	I n=63		II n=57		III n=57		IV n=131		NA n=945	
	obs. %	rel. %	obs. %	rel. %	obs. %	rel. %	obs. %	rel. %	obs. %	rel. %
0	100.0	100.0	100.0	100.0	100.0	100.0	100.0	100.0	100.0	100.0
1	87.2	89.3	87.1	87.5	83.8	84.8	80.4	82.2	69.4	71.9
2	85.5	88.7	79.6	81.9	80.1	82.8	73.8	77.9	60.6	64.6
3	80.1	84.8	75.6	78.1	80.1	82.8	68.6	73.7	55.3	60.5
4	78.2	84.1	71.2	74.7	75.7	80.3	61.9	68.7	50.7	56.8
5	76.1	83.8	71.2	74.4	73.4	78.2	56.6	64.1	46.3	53.3
6	76.1	83.9	71.2	74.1	66.1	73.4	53.3	60.5	43.7	51.5
7	73.9	81.8	71.2	73.8	66.1	73.2	47.6	54.7	40.3	48.6
8	69.2	80.3			66.1	72.9	46.4	54.3	38.4	47.4
9	69.2	80.8					43.6	51.9	35.8	44.9
10							40.6	49.2	32.2	41.5
11							38.7	47.6	30.3	39.7
12									28.0	37.7
13									25.0	34.3
14									23.9	33.3
15									23.2	32.6
Median							6.2		4.3	

Table 4b. Observed (obs.) and relative (rel.) survival of patients with Non-Hodgkin lymphoma NOS by Ann Arbor staging for period 1998-2019 (N=308).

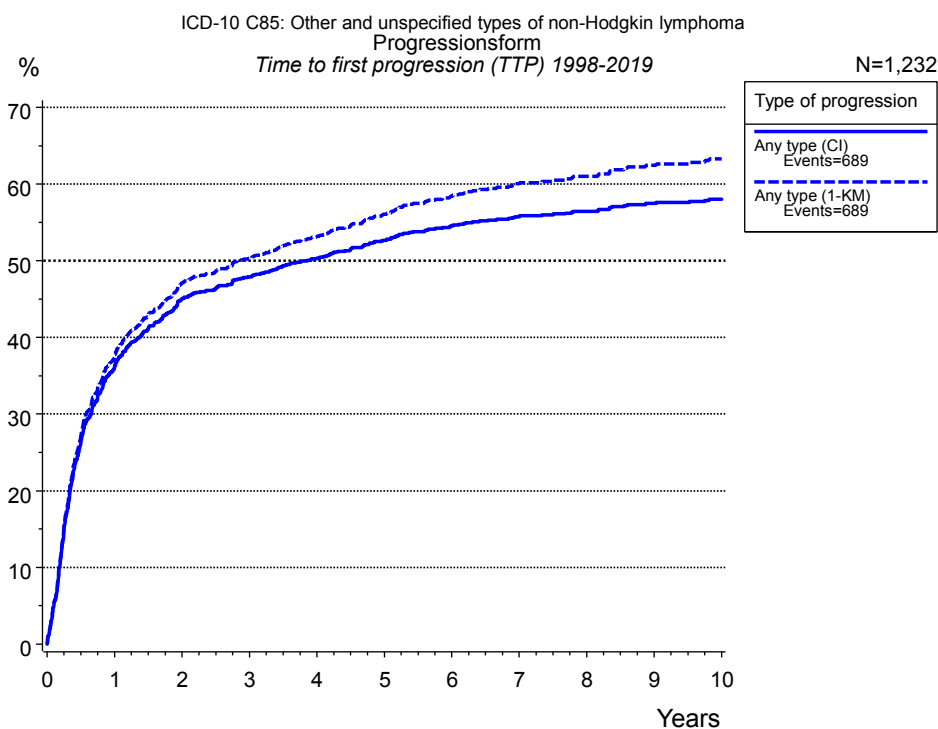


Figure 5a. Time to first progression of 1,232 patients with Non-Hodgkin lymphoma NOS diagnosed between 1998 and 2019 (in solid cancers M0 only) estimated by cumulative incidence function (CI, solid line) accounting for death as competing risk and by inverse Kaplan-Meier estimate (1-KM, dashed line). The frequency of events may be underestimated due to underreporting.

	Type of progression	
	Any type (CI)	Any type (1-KM)
N	1,232	1,232
Events	675	675
compet.	196	
Years	%	%
0	0.0	0.0
1	36.2	37.6
2	45.1	47.2
3	47.9	50.3
4	50.3	53.1
5	52.7	56.1
6	54.5	58.5
7	55.8	60.0
8	56.5	61.0
9	57.5	62.5
10	58.0	63.3

Table 5b. Time to first progression of patients with Non-Hodgkin lymphoma NOS for period 1998-2019 (N=1,232), also showing the total of progression events (Events) and of deaths as competing risk (compet.).

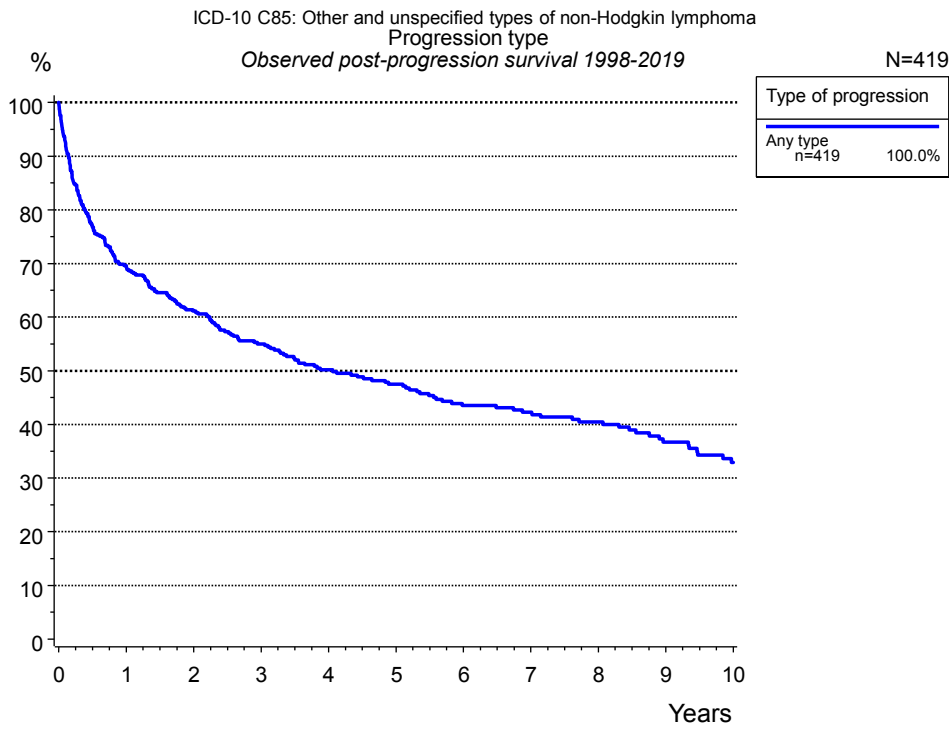


Figure 5c. Observed post-progression survival of 419 patients with Non-Hodgkin lymphoma NOS diagnosed between 1998 and 2019. These 419 patients with documented progression events during their course of disease represent 34.0 % of the totally 1,234 evaluated cases. Patients with cancer relapse documented via death certificates only were excluded (n=272, 22.0 %).

Medical record documentation often lacks the linguistic severity to distinguish between local relapse, regional lymph node metastasis and distant spread in solid cancers. Frequently, the statement “not specified” is the only information in registries regarding relapse of the disease. The category “Any type” denotes all cases who suffered from at least one relapse during the course of disease (incl. primary M1-status). Although, the real number of relapsed patients is likely to be much higher. The accumulated percentage of patients with local relapse or distant metastasis exceeds the 100 % value because patients are potentially considered in more than one subgroup.

Type of progression	
Any type n=419	
Years	%
0	100.0
1	69.6
2	61.1
3	55.0
4	50.2
5	47.5
6	43.5
7	42.3
8	40.5
9	36.7
10	32.9

Table 5d. Observed post-progression survival of patients with Non-Hodgkin lymphoma NOS for period 1998-2019 (N=419).

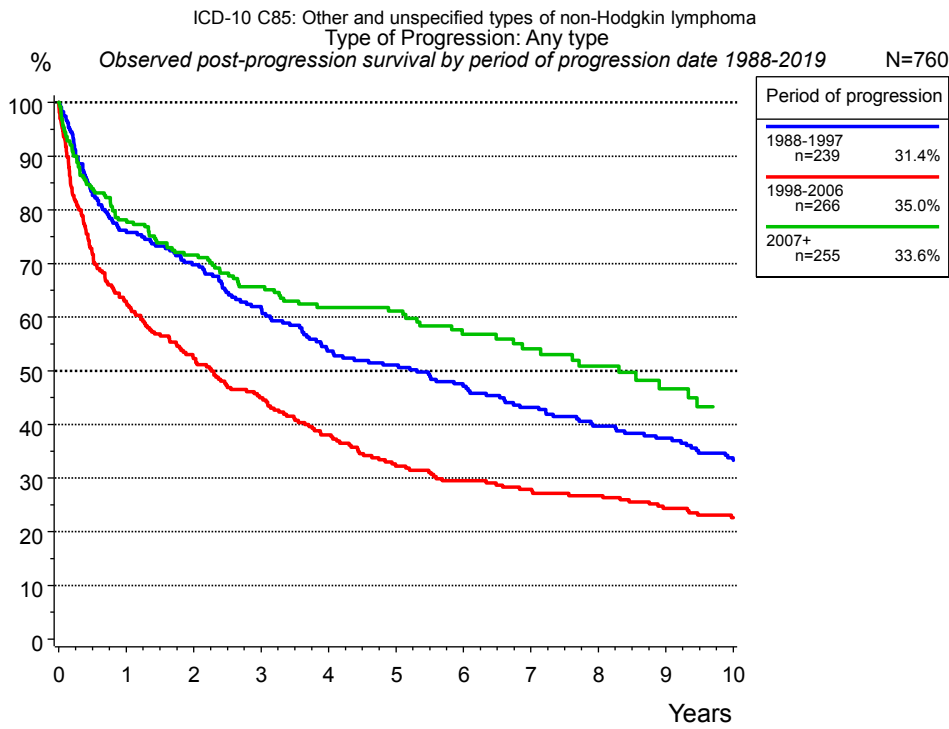


Figure 5e. Observed post-progression (any type) survival of 760 patients with Non-Hodgkin lymphoma NOS diagnosed between 1988 and 2019 by period of progression.

Years	Period of progression		
	1988-1997 n=239 %	1998-2006 n=266 %	2007+ n=255 %
0	100.0	100.0	100.0
1	76.2	62.9	78.1
2	69.8	52.3	71.6
3	61.9	45.0	65.7
4	53.7	38.0	61.8
5	51.0	32.2	61.2
6	47.1	29.5	56.8
7	43.2	27.9	54.1
8	39.7	26.7	50.9
9	37.4	24.3	46.6
10	33.3	22.6	

Table 5f. Observed post-progression (any type) survival of patients with Non-Hodgkin lymphoma NOS for period 1988-2019 by period of progression (N=760).

Shortcuts

MCR Munich Cancer Registry, Germany

NCI National Cancer Institute, USA

SEER Surveillance, Epidemiology, and End Results, USA

UICC Union for International Cancer Control, Geneva

DCO Death certificate only Death certificate provides the only notification to the registry.

NA Not available

NOS Not otherwise specified

OS Overall/Observed survival Overall/Observed survival (Kaplan-Meier estimate)
Date of entry: diagnosis
Event: death from any cause

RS Relative survival Survival compared to “general population”,
ratio of observed to expected survival (Ederer II method),
reflecting cancer specific survival

AS Assembled survival Assembled chart of
observed, expected, relative survival

CS Conditional survival Survival probability under the condition of surviving
a given period of time

TTP Time to progression Time to first progression / relapse
Date of entry: diagnosis
Event: (progression / relapse): first local-, lymph node recurrence,
distant metastasis or unspecified progression

1-KM 1 minus Kaplan-Meier estimator
 (“inverse” Kaplan-Meier estimator)

CI Cumulative incidence
Death as competing risk (according to Kalbfleisch und Prentice)

PPS Post-progression survival Survival since first progression / relapse (Kaplan-Meier estimate)
Date of entry (progression / relapse): first local-, lymph node
recurrence, distant metastasis or unspecified progression
Event: death from any cause

Recommended Citation

Munich Cancer Registry. Survival ICD-10 C85: Non-Hodgkin lymphoma NOS [Internet]. 2021 [updated 2021 Jan 28; cited 2021 Mar 1]. Available from: https://www.tumorregister-muenchen.de/en/facts/surv/sC85__E-ICD-10-C85-Non-Hodgkin-lymphoma-NOS-survival.pdf

Copyright

The content of the public web site provided by the Munich Cancer Registry is available worldwide and free of charge. All documents are free to download, utilize, copy, print-out and distribute, providing that the MCR is referenced.

Disclaimer

The Munich Cancer Registry reserves the right to not be responsible for the topicality, correctness, completeness or quality of the information provided. Liability claims regarding damage caused by the use of any information provided, including any kind of information which is incomplete or incorrect, will therefore be rejected.