

Munich Cancer Registry



- ▶ Incidence and Mortality
- ▶ Selection Matrix
- ▶ Homepage
- ▶ *Deutsch*

cSCC: Squamous-cell carcinoma

Survival

| | |
|-------------------|------------|
| Year of diagnosis | 1998-2019 |
| Patients | 13,825 |
| Diseases | 16,606 |
| Cases evaluated | 9,003 |
| Creation date | 01/28/2021 |
| Database export | 01/07/2021 |
| Population | 4.92 m |



Munich Cancer Registry
Cancer Registry Bavaria - Upper Bavaria Regional Center
at Klinikum Grosshadern/IBE
Marchioninstr. 15
Munich, 81377
Germany

<https://www.tumorregister-muenchen.de/en>

https://www.tumorregister-muenchen.de/en/facts/surv/sCSCC_E-cSCC-Squamous-cell-carcinoma-survival.pdf

Index of figures and tables

| Fig./Tbl. | | Page |
|-----------|--|------|
| 1a | Relative survival by period of diagnosis (chart) | 3 |
| 1b | Survival by period of diagnosis (table) | 3 |
| 2a | Survival by sex (chart) | 4 |
| 2b | Survival by sex (table) | 4 |
| 3a | Relative survival by age category (chart) | 5 |
| 3b | Survival by age category (table) | 5 |
| 5a | Time to first progression (chart) | 6 |
| 5b | Time to first progression (table) | 6 |
| 5c | Observed post-progression survival (chart) | 7 |
| 5d | Observed post-progression survival (table) | 7 |

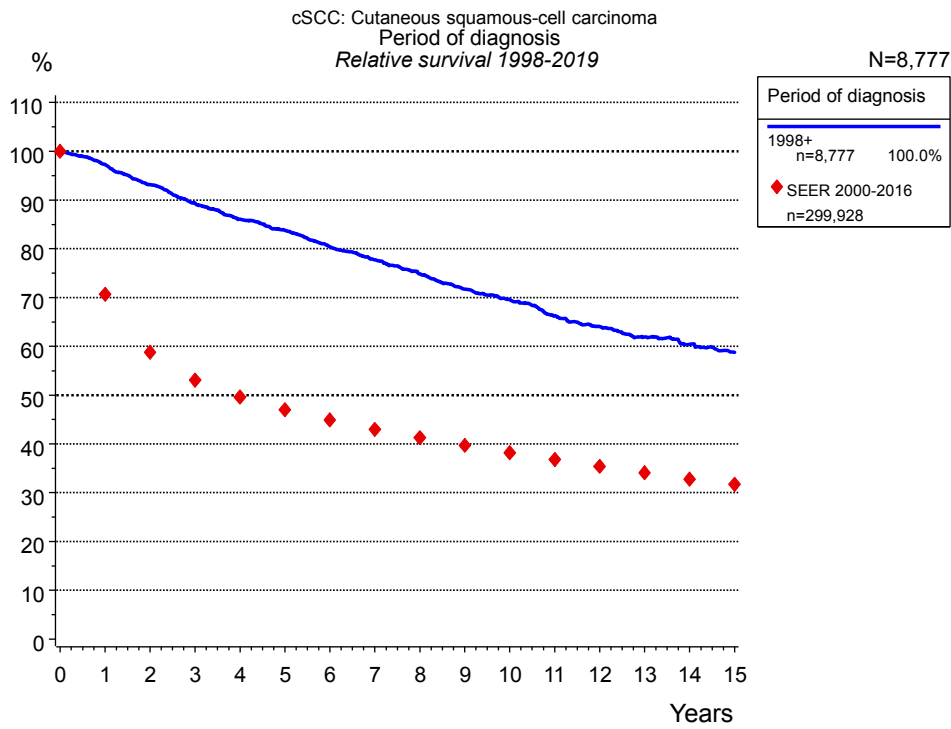


Figure 1a. Relative survival of patients with Squamous-cell carcinoma by period of diagnosis. Included in the evaluation are 8,777 cases diagnosed between 1998 and 2019.

The presented survival curves are derived from clinical records with valid follow-up informations, which means that death certificate cases (DCO) cases are omitted from the analysis. With this one restriction, the MCR has provided population-based statistics since 1998, collecting data on all cancer cases in the region of southern Bavaria. Historical data of previous time periods can be heavily selected, therefore, univariate survival comparisons of the presented time periods must be carefully considered. Nonetheless, all calculable survival curves are depicted to facilitate the comparison of long time follow-up analyses of relative survival between particular cancers.

| Period of diagnosis | | |
|---------------------|--------|--------|
| 1998+ | | |
| n=8,777 | | |
| Years | obs. % | rel. % |
| 0 | 100.0 | 100.0 |
| 1 | 90.5 | 97.3 |
| 2 | 80.9 | 93.2 |
| 3 | 72.6 | 89.4 |
| 4 | 65.6 | 86.0 |
| 5 | 60.1 | 83.8 |
| 6 | 54.3 | 80.4 |
| 7 | 49.5 | 77.8 |
| 8 | 45.0 | 74.9 |
| 9 | 40.8 | 71.7 |
| 10 | 37.5 | 69.6 |
| 11 | 33.7 | 66.3 |
| 12 | 30.9 | 64.1 |
| 13 | 28.3 | 61.9 |
| 14 | 26.1 | 60.4 |
| 15 | 24.1 | 58.8 |
| Median | 6.9 | |

Table 1b. Observed (obs.) and relative (rel.) survival of patients with Squamous-cell carcinoma by period of diagnosis for period 1998-2019 (N=8,777).

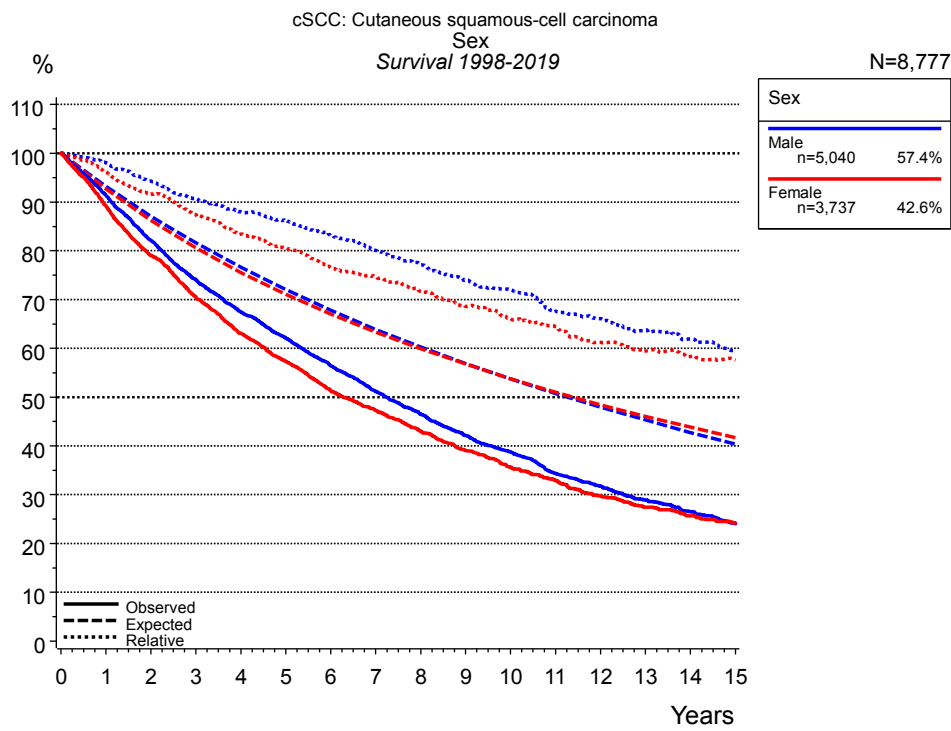


Figure 2a. Survival of patients with Squamous-cell carcinoma by sex. Included in the evaluation are 8,777 cases diagnosed between 1998 and 2019.

| Years | Sex | | | |
|--------|-----------------|--------|-------------------|--------|
| | Male n=5,040 | | Female n=3,737 | |
| | obs. % | rel. % | obs. % | rel. % |
| 0 | 100.0 | 100.0 | 100.0 | 100.0 |
| 1 | 91.4 | 98.0 | 89.2 | 96.3 |
| 2 | 82.2 | 94.3 | 79.1 | 91.7 |
| 3 | 74.1 | 90.8 | 70.5 | 87.5 |
| 4 | 67.5 | 88.0 | 63.0 | 83.4 |
| 5 | 62.1 | 86.2 | 57.3 | 80.6 |
| 6 | 56.4 | 83.1 | 51.4 | 76.6 |
| 7 | 51.2 | 80.1 | 47.2 | 74.6 |
| 8 | 46.5 | 77.1 | 43.1 | 71.7 |
| 9 | 42.1 | 74.0 | 39.0 | 68.6 |
| 10 | 38.8 | 72.1 | 35.6 | 66.1 |
| 11 | 34.3 | 67.6 | 33.0 | 64.4 |
| 12 | 31.7 | 66.1 | 29.8 | 61.3 |
| 13 | 29.0 | 63.8 | 27.4 | 59.5 |
| 14 | 26.5 | 61.9 | 25.7 | 58.4 |
| 15 | 24.1 | 59.5 | 24.1 | 57.6 |
| Median | 7.2 | | 6.3 | |

Table 2b. Observed (obs.) and relative (rel.) survival of patients with Squamous-cell carcinoma by sex for period 1998-2019 (N=8,777).

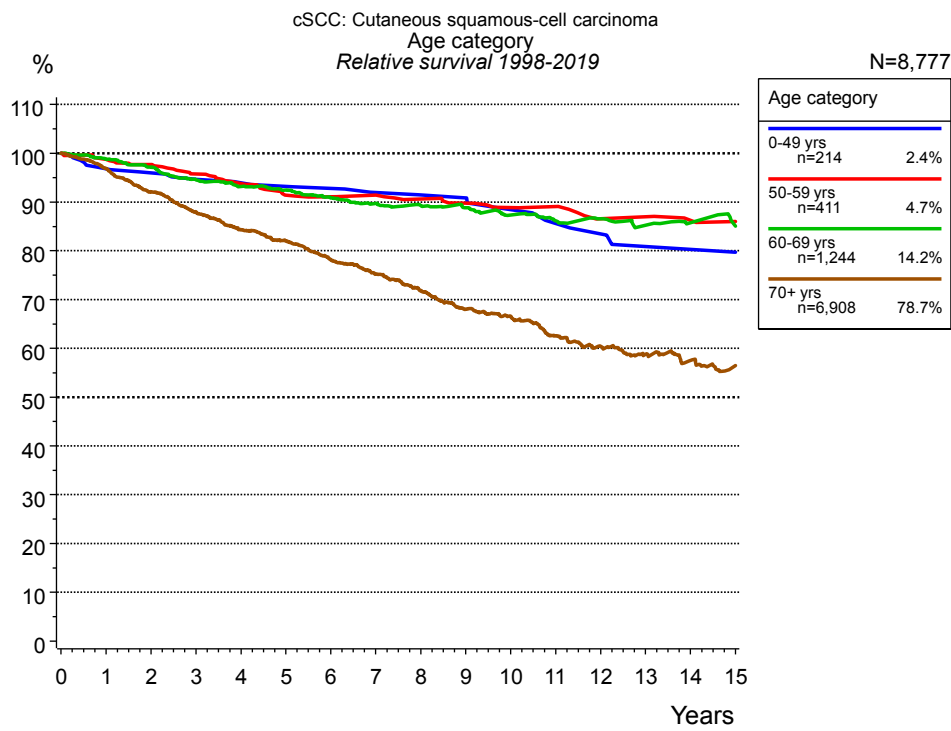


Figure 3a. Relative survival of patients with Squamous-cell carcinoma by age category. Included in the evaluation are 8,777 cases diagnosed between 1998 and 2019.

| Years | Age category | | | | | | | |
|--------|-------------------|--------|--------------------|--------|----------------------|--------|--------------------|--------|
| | 0-49 yrs n=214 | | 50-59 yrs n=411 | | 60-69 yrs n=1,244 | | 70+ yrs n=6,908 | |
| | obs. % | rel. % | obs. % | rel. % | obs. % | rel. % | obs. % | rel. % |
| 0 | 100.0 | 100.0 | 100.0 | 100.0 | 100.0 | 100.0 | 100.0 | 100.0 |
| 1 | 97.0 | 96.8 | 98.4 | 98.8 | 97.5 | 98.8 | 88.6 | 96.9 |
| 2 | 95.9 | 96.0 | 96.8 | 97.7 | 94.4 | 97.2 | 77.1 | 92.1 |
| 3 | 94.7 | 94.7 | 94.1 | 95.8 | 90.3 | 94.6 | 67.5 | 88.0 |
| 4 | 93.4 | 94.0 | 91.5 | 93.8 | 87.5 | 93.2 | 59.3 | 84.3 |
| 5 | 92.7 | 93.2 | 88.4 | 91.4 | 85.2 | 92.5 | 52.9 | 82.1 |
| 6 | 92.0 | 92.8 | 87.7 | 91.1 | 81.9 | 90.9 | 46.1 | 78.2 |
| 7 | 90.5 | 92.0 | 87.2 | 91.4 | 79.2 | 89.7 | 40.6 | 75.3 |
| 8 | 89.6 | 91.5 | 85.4 | 90.7 | 76.9 | 89.3 | 35.3 | 71.9 |
| 9 | 89.6 | 90.9 | 83.8 | 89.8 | 74.4 | 88.8 | 30.3 | 68.0 |
| 10 | 86.4 | 88.4 | 82.0 | 88.9 | 71.2 | 87.4 | 26.7 | 66.6 |
| 11 | 83.5 | 85.7 | 81.4 | 89.1 | 68.1 | 86.1 | 22.5 | 62.6 |
| 12 | 81.8 | 83.5 | 77.4 | 86.6 | 66.1 | 86.5 | 19.4 | 60.5 |
| 13 | 78.1 | 80.9 | 77.4 | 87.0 | 62.8 | 85.2 | 16.8 | 58.8 |
| 14 | 78.1 | 80.3 | 75.2 | 86.3 | 60.6 | 85.7 | 14.4 | 57.6 |
| 15 | 78.1 | 79.7 | 74.1 | 86.0 | 57.4 | 85.0 | 12.3 | 56.5 |
| Median | | | | | 17.6 | | 5.4 | |

Table 3b. Observed (obs.) and relative (rel.) survival of patients with Squamous-cell carcinoma by age category for period 1998-2019 (N=8,777).

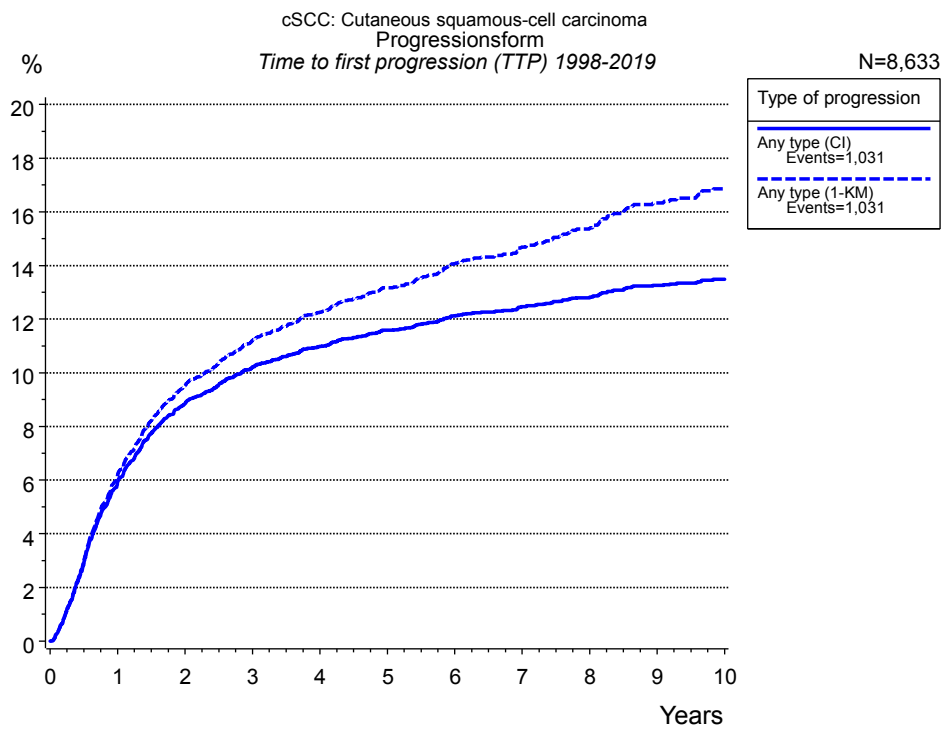


Figure 5a. Time to first progression of 8,633 patients with Squamous-cell carcinoma diagnosed between 1998 and 2019 (in solid cancers M0 only) estimated by cumulative incidence function (CI, solid line) accounting for death as competing risk and by inverse Kaplan-Meier estimate (1-KM, dashed line). The frequency of events may be underestimated due to underreporting.

| | Type of progression | |
|---------|---------------------|-----------------|
| | Any type (CI) | Any type (1-KM) |
| N | 8,633 | 8,633 |
| Events | 1,012 | 1,012 |
| compet. | 3,439 | |
| Years | % | % |
| 0 | 0.0 | 0.0 |
| 1 | 5.9 | 6.2 |
| 2 | 8.9 | 9.5 |
| 3 | 10.2 | 11.2 |
| 4 | 11.0 | 12.3 |
| 5 | 11.6 | 13.2 |
| 6 | 12.1 | 14.1 |
| 7 | 12.5 | 14.7 |
| 8 | 12.8 | 15.4 |
| 9 | 13.3 | 16.3 |
| 10 | 13.5 | 16.9 |

Table 5b. Time to first progression of patients with Squamous-cell carcinoma for period 1998-2019 (N=8,633), also showing the total of progression events (Events) and of deaths as competing risk (compet.).

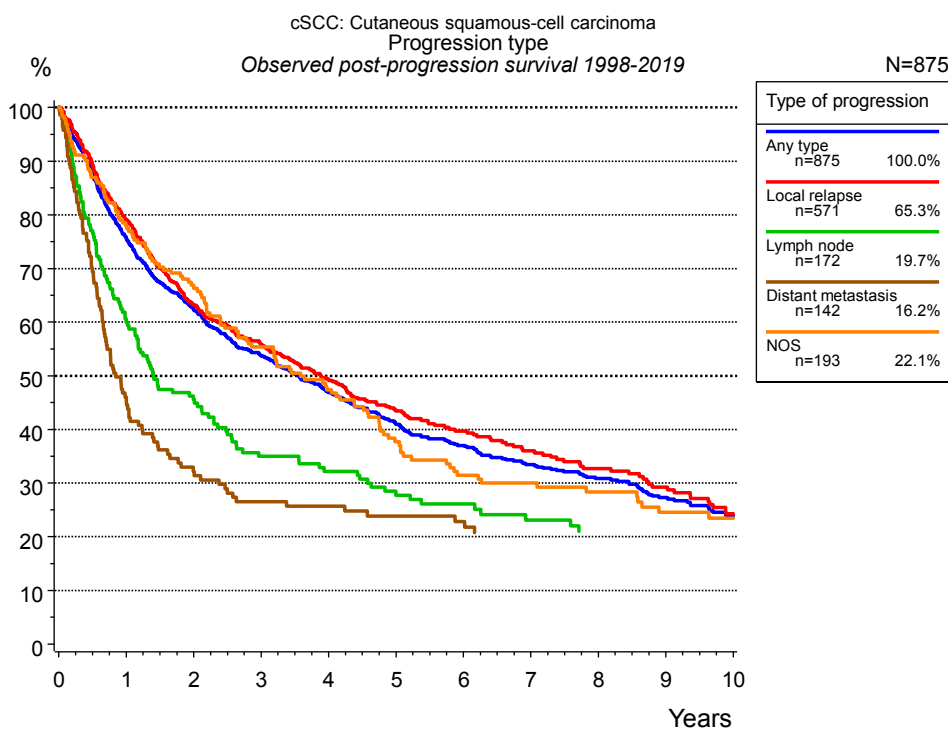


Figure 5c. Observed post-progression survival of 875 patients with Squamous-cell carcinoma diagnosed between 1998 and 2019. These 875 patients with documented progression events during their course of disease represent 10.0 % of the totally 8,777 evaluated cases. Patients with cancer relapse documented via death certificates only were excluded (n=174, 2.0 %). Multiple progression types on different sites are included in the evaluation even when not occurring synchronously. The NOS (not otherwise specified) class is included under the condition, that it is the one and only progression type during the course of disease.

Medical record documentation often lacks the linguistic severity to distinguish between local relapse, regional lymph node metastasis and distant spread in solid cancers. Frequently, the statement “not specified” is the only information in registries regarding relapse of the disease. The category “Any type” denotes all cases who suffered from at least one relapse during the course of disease (incl. primary M1-status). Although, the real number of relapsed patients is likely to be much higher. The accumulated percentage of patients with local relapse or distant metastasis exceeds the 100 % value because patients are potentially considered in more than one subgroup.

| Years | Type of progression | | | | |
|-------|------------------------|-----------------------------|--------------------------|----------------------------------|-------------------|
| | Any type n=875 % | Local relapse n=571 % | Lymph node n=172 % | Distant metastasis n=142 % | NOS n=193 % |
| 0 | 100.0 | 100.0 | 100.0 | 100.0 | 100.0 |
| 1 | 75.8 | 79.2 | 60.6 | 46.0 | 78.0 |
| 2 | 62.3 | 63.1 | 45.5 | 32.2 | 66.3 |
| 3 | 53.7 | 55.8 | 35.0 | 26.5 | 55.4 |
| 4 | 47.0 | 49.4 | 32.1 | 25.7 | 47.4 |
| 5 | 40.9 | 43.4 | 27.7 | 23.9 | 37.7 |
| 6 | 37.0 | 39.7 | 26.1 | 22.8 | 31.5 |
| 7 | 33.5 | 36.0 | 23.1 | | 30.0 |
| 8 | 30.8 | 32.7 | | | 28.4 |
| 9 | 27.3 | 29.2 | | | 24.6 |
| 10 | 24.0 | 24.3 | | | 23.5 |

Table 5d. Observed post-progression survival of patients with Squamous-cell carcinoma for period 1998-2019 (N=875).

Shortcuts

MCR Munich Cancer Registry, Germany

NCI National Cancer Institute, USA

SEER Surveillance, Epidemiology, and End Results, USA

UICC Union for International Cancer Control, Geneva

DCO Death certificate only Death certificate provides the only notification to the registry.

NA Not available

NOS Not otherwise specified

OS Overall/Observed survival Overall/Observed survival (Kaplan-Meier estimate)
Date of entry: diagnosis
Event: death from any cause

RS Relative survival Survival compared to “general population”,
ratio of observed to expected survival (Ederer II method),
reflecting cancer specific survival

AS Assembled survival Assembled chart of
observed, expected, relative survival

CS Conditional survival Survival probability under the condition of surviving
a given period of time

TTP Time to progression Time to first progression / relapse
Date of entry: diagnosis
Event: (progression / relapse): first local-, lymph node recurrence,
distant metastasis or unspecified progression

1-KM 1 minus Kaplan-Meier estimator
 (“inverse” Kaplan-Meier estimator)

CI Cumulative incidence
Death as competing risk (according to Kalbfleisch und Prentice)

PPS Post-progression survival Survival since first progression / relapse (Kaplan-Meier estimate)
Date of entry (progression / relapse): first local-, lymph node
recurrence, distant metastasis or unspecified progression
Event: death from any cause

Recommended Citation

Munich Cancer Registry. Survival cSCC: Squamous-cell carcinoma [Internet]. 2021 [updated 2021 Jan 28; cited 2021 Mar 1]. Available from: https://www.tumorregister-muenchen.de/en/facts/surv/sCSCC_E-cSCC-Squamous-cell-carcinoma-survival.pdf

Copyright

The content of the public web site provided by the Munich Cancer Registry is available worldwide and free of charge. All documents are free to download, utilize, copy, print-out and distribute, providing that the MCR is referenced.

Disclaimer

The Munich Cancer Registry reserves the right to not be responsible for the topicality, correctness, completeness or quality of the information provided. Liability claims regarding damage caused by the use of any information provided, including any kind of information which is incomplete or incorrect, will therefore be rejected.