

Munich Cancer Registry



- ▶ Incidence and Mortality
- ▶ Selection Matrix
- ▶ Homepage
- ▶ *Deutsch*

ICD-10 D33: CNS neoplasm

Survival

Year of diagnosis	1988-1997	1998-2019
Patients	31	911
Diseases	31	911
Cases evaluated	27	783
Creation date	01/28/2021	
Database export	01/07/2021	
Population	4.92 m	



Munich Cancer Registry
Cancer Registry Bavaria - Upper Bavaria Regional Center
at Klinikum Grosshadern/IBE
Marchioninstr. 15
Munich, 81377
Germany

<https://www.tumorregister-muenchen.de/en>

https://www.tumorregister-muenchen.de/en/facts/surv/sD33__E-ICD-10-D33-CNS-neoplasm-survival.pdf

Index of figures and tables

Fig./Tbl.		Page
1a	Relative survival by period of diagnosis (chart)	3
1b	Survival by period of diagnosis (table)	3
2a	Survival by sex (chart)	4
2b	Survival by sex (table)	4
3a	Relative survival by age category (chart)	5
3b	Survival by age category (table)	5

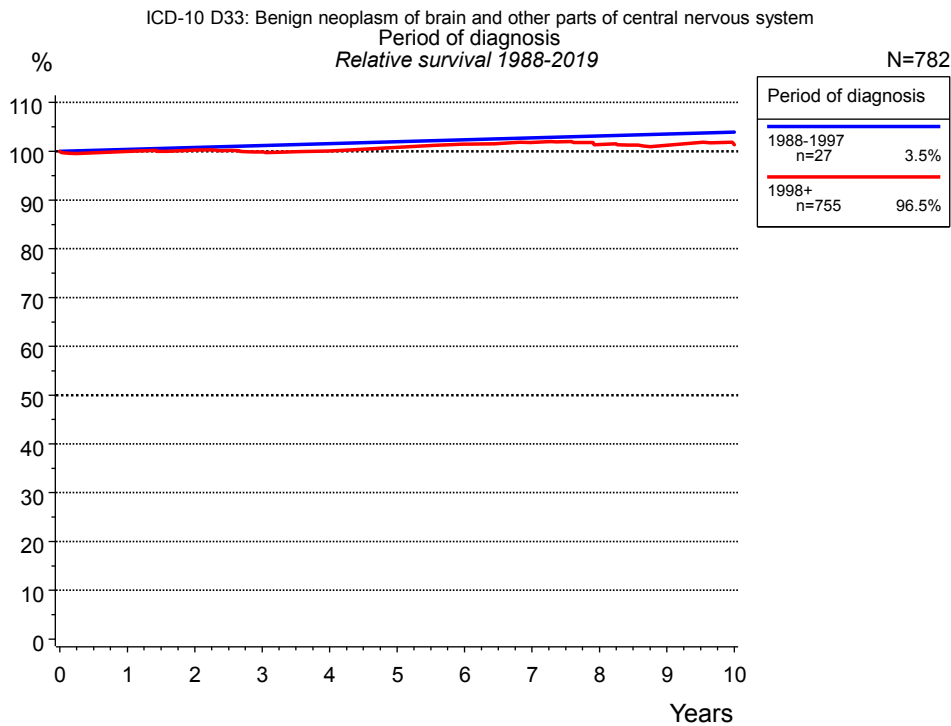


Figure 1a. Relative survival of patients with cNS neoplasm by period of diagnosis. Included in the evaluation are 782 cases diagnosed between 1988 and 2019.

The presented survival curves are derived from clinical records with valid follow-up informations, which means that death certificate cases (DCO) cases are omitted from the analysis. With this one restriction, the MCR has provided population-based statistics since 1998, collecting data on all cancer cases in the region of southern Bavaria. Historical data of previous time periods can be heavily selected, therefore, univariate survival comparisons of the presented time periods must be carefully considered. Nonetheless, all calculable survival curves are depicted to facilitate the comparison of long time follow-up analyses of relative survival between particular cancers.

Years	Period of diagnosis			
	1988-1997 n=27		1998+ n=755	
	obs. %	rel. %	obs. %	rel. %
0	100.0	100.0	100.0	100.0
1	100.0	100.4	99.2	100.0
2	100.0	100.8	98.6	100.2
3	100.0	101.2	97.3	99.9
4	100.0	101.6	96.4	100.1
5	100.0	102.0	96.0	100.8
6	100.0	102.4	95.5	101.5
7	100.0	102.8	94.6	101.8
8	100.0	103.2	93.0	101.4
9	100.0	103.6	91.6	101.3
10	100.0	104.0	90.3	101.3
Median				

Table 1b. Observed (obs.) and relative (rel.) survival of patients with cNS neoplasm by period of diagnosis for period 1988-2019 (N=782).

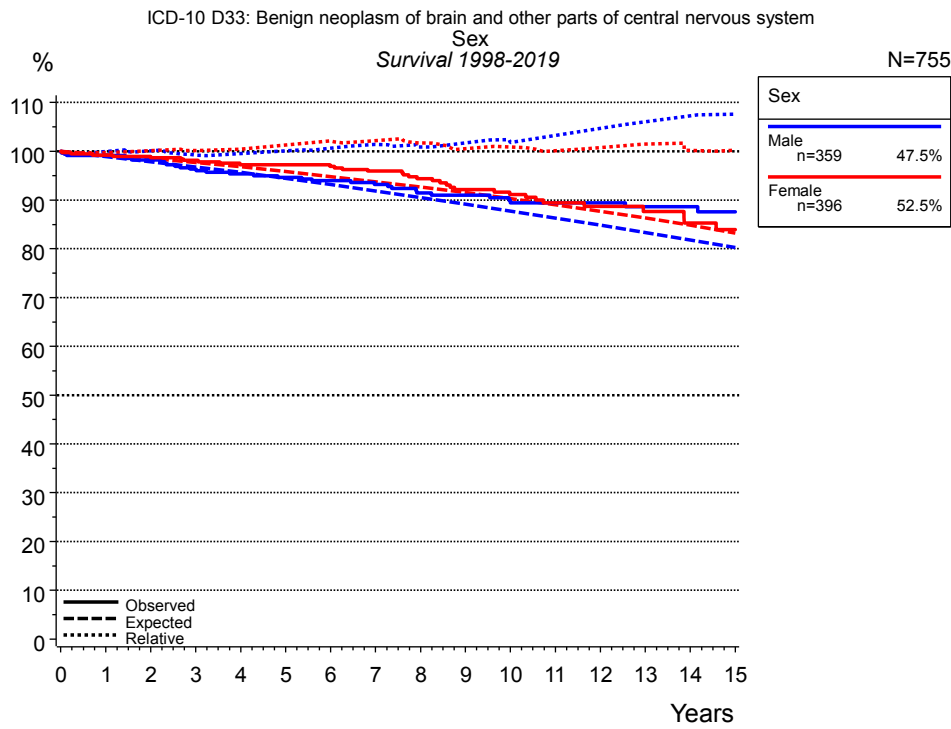


Figure 2a. Survival of patients with CNS neoplasm by sex. Included in the evaluation are 755 cases diagnosed between 1998 and 2019.

Years	Sex			
	Male n=359		Female n=396	
	obs. %	rel. %	obs. %	rel. %
0	100.0	100.0	100.0	100.0
1	99.1	100.0	99.2	99.8
2	98.2	100.1	99.0	100.2
3	96.3	99.2	98.1	100.2
4	95.3	99.5	97.3	100.4
5	94.7	100.1	97.3	101.3
6	94.0	100.6	96.9	102.1
7	93.2	101.4	95.9	102.2
8	91.5	100.9	94.4	101.7
9	91.0	101.7	92.2	100.5
10	89.4	101.8	91.1	100.9
11	89.4	103.3	89.4	100.2
12	89.4	104.7	88.7	100.8
13	88.7	106.1	87.7	101.5
14	88.7	107.3	85.3	100.2
15	87.6	107.6	84.0	100.3
Median				

Table 2b. Observed (obs.) and relative (rel.) survival of patients with CNS neoplasm by sex for period 1998-2019 (N=755).

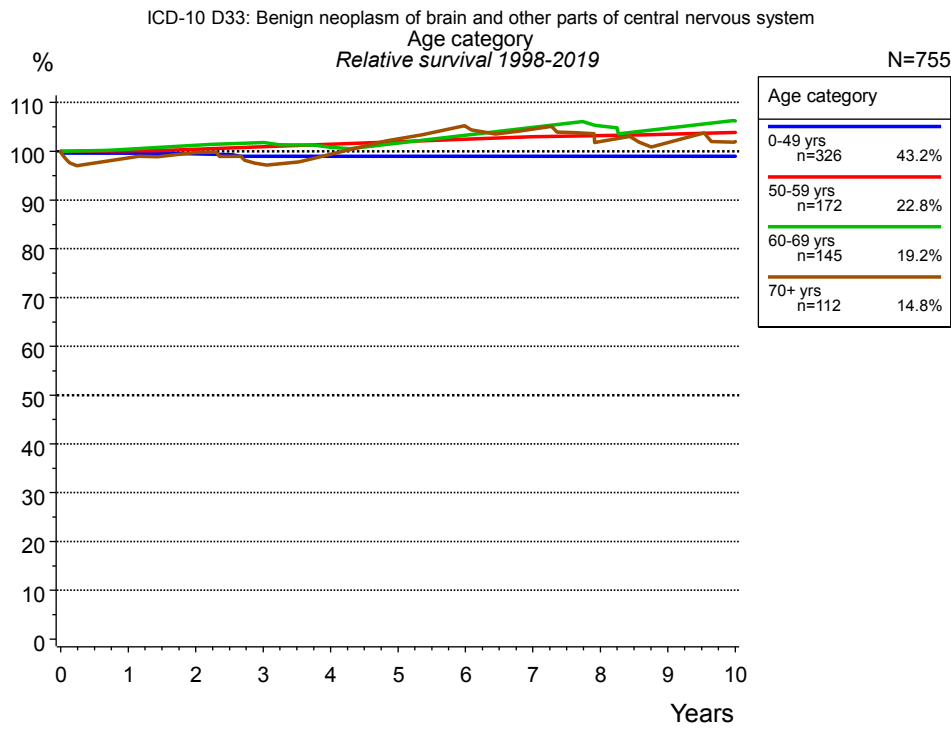


Figure 3a. Relative survival of patients with cNS neoplasm by age category. Included in the evaluation are 755 cases diagnosed between 1998 and 2019.

Years	Age category							
	0-49 yrs n=326		50-59 yrs n=172		60-69 yrs n=145		70+ yrs n=112	
	obs. %	rel. %	obs. %	rel. %	obs. %	rel. %	obs. %	rel. %
0	100.0	100.0	100.0	100.0	100.0	100.0	100.0	100.0
1	99.7	99.6	100.0	100.1	99.3	100.4	96.3	98.6
2	99.3	99.5	99.4	100.4	99.3	101.2	94.5	99.8
3	98.6	99.0	99.4	100.9	98.5	101.8	88.6	97.3
4	98.6	99.0	99.4	101.5	95.4	100.8	86.7	99.4
5	98.6	99.1	99.4	102.0	94.6	101.6	85.7	102.5
6	98.2	99.1	99.4	102.5	94.6	103.3	83.5	105.1
7	98.2	99.0	98.5	103.0	94.6	104.9	79.2	104.6
8	97.8	99.0	98.5	103.2	92.4	105.2	72.9	102.0
9	97.8	99.0	97.5	103.5	90.2	104.7	68.6	101.8
10	97.1	99.0	97.5	103.9	88.8	106.2	63.9	102.0
Median								

Table 3b. Observed (obs.) and relative (rel.) survival of patients with cNS neoplasm by age category for period 1998-2019 (N=755).

Shortcuts

MCR	Munich Cancer Registry, Germany	
NCI	National Cancer Institute, USA	
SEER	Surveillance, Epidemiology, and End Results, USA	
UICC	Union for International Cancer Control, Geneva	
DCO	Death certificate only	Death certificate provides the only notification to the registry.
NA	Not available	
NOS	Not otherwise specified	
OS	Overall/Observed survival	Overall/Observed survival (Kaplan-Meier estimate) Date of entry: diagnosis Event: death from any cause
RS	Relative survival	Survival compared to “general population”, ratio of observed to expected survival (Ederer II method), reflecting cancer specific survival
AS	Assembled survival	Assembled chart of observed, expected, relative survival
CS	Conditional survival	Survival probability under the condition of surviving a given period of time
TTP	Time to progression	Time to first progression / relapse Date of entry: diagnosis Event: (progression / relapse): first local-, lymph node recurrence, distant metastasis or unspecified progression
1-KM		1 minus Kaplan-Meier estimator ("inverse" Kaplan-Meier estimator)
CI		Cumulative incidence Death as competing risk (according to Kalbfleisch und Prentice)
PPS	Post-progression survival	Survival since first progression / relapse (Kaplan-Meier estimate) Date of entry (progression / relapse): first local-, lymph node recurrence, distant metastasis or unspecified progression Event: death from any cause

Recommended Citation

Munich Cancer Registry. Survival ICD-10 D33: CNS neoplasm [Internet]. 2021 [updated 2021 Jan 28; cited 2021 Mar 1]. Available from: https://www.tumorregister-muenchen.de/en/facts/surv/sD33__E-ICD-10-D33-CNS-neoplasm-survival.pdf

Copyright

The content of the public web site provided by the Munich Cancer Registry is available worldwide and free of charge. All documents are free to download, utilize, copy, print-out and distribute, providing that the MCR is referenced.

Disclaimer

The Munich Cancer Registry reserves the right to not be responsible for the topicality, correctness, completeness or quality of the information provided. Liability claims regarding damage caused by the use of any information provided, including any kind of information which is incomplete or incorrect, will therefore be rejected.