

# Munich Cancer Registry



- ▶ Incidence and Mortality
- ▶ Selection Matrix
- ▶ Homepage
- ▶ *Deutsch*

## ICD-10 D37-D48: NPL unknown behaviour

### Survival

Year of diagnosis	1998-2019
Patients	11,696
Diseases	11,829
Cases evaluated	6,745
Creation date	01/28/2021
Database export	01/07/2021
Population	4.92 m



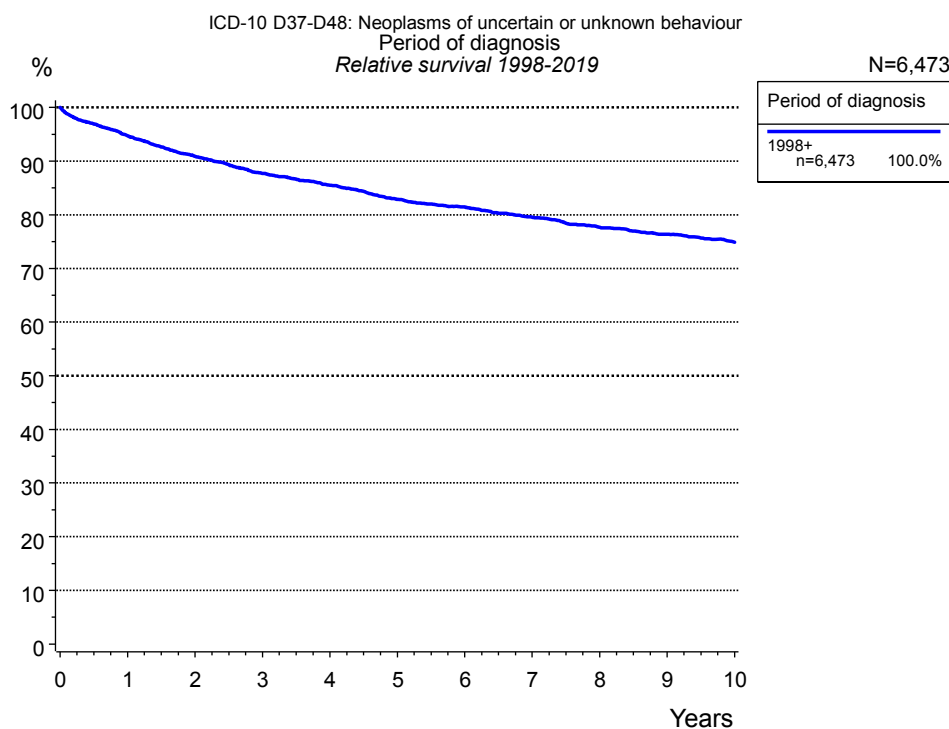
Munich Cancer Registry  
Cancer Registry Bavaria - Upper Bavaria Regional Center  
at Klinikum Grosshadern/IBE  
Marchioninstr. 15  
Munich, 81377  
Germany

<https://www.tumorregister-muenchen.de/en>

<https://www.tumorregister-muenchen.de/en/facts/surv/sD3748E-ICD-10-D37-D48-NPL-unknown-behaviour-survival.pdf>

**Index of figures and tables**

Fig./Tbl.		Page
1a	Relative survival by period of diagnosis (chart)	3
1b	Survival by period of diagnosis (table)	3
2a	Survival by sex (chart)	4
2b	Survival by sex (table)	4
3a	Relative survival by age category (chart)	5
3b	Survival by age category (table)	5

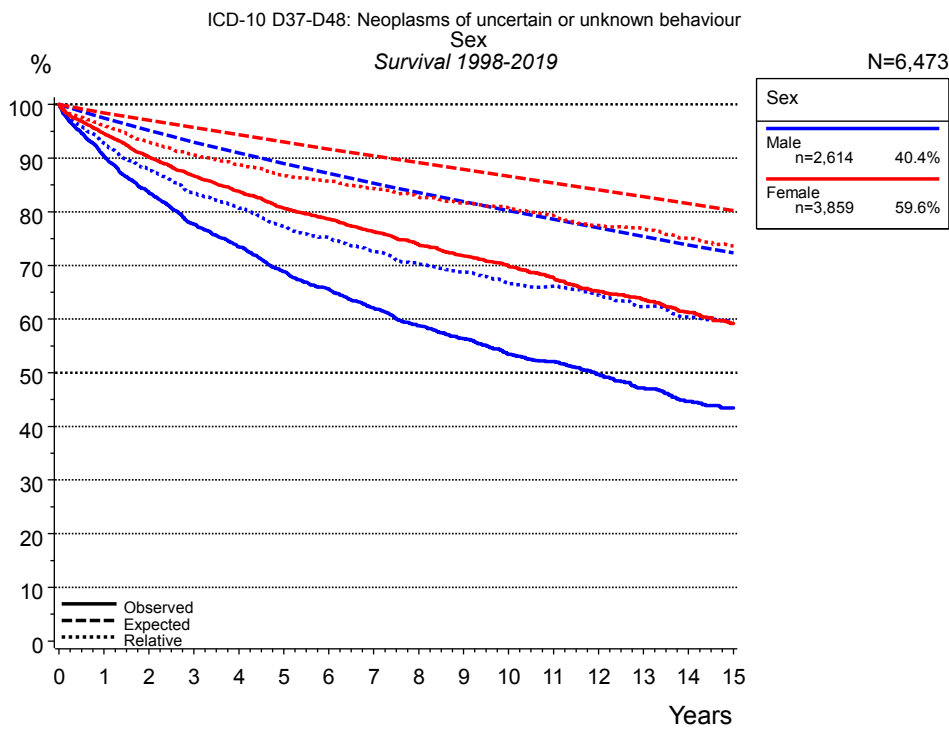


**Figure 1a.** Relative survival of patients with NPL unknown behaviour by period of diagnosis. Included in the evaluation are 6,473 cases diagnosed between 1998 and 2019.

The presented survival curves are derived from clinical records with valid follow-up informations, which means that death certificate cases (DCO) cases are omitted from the analysis. With this one restriction, the MCR has provided population-based statistics since 1998, collecting data on all cancer cases in the region of southern Bavaria. Historical data of previous time periods can be heavily selected, therefore, univariate survival comparisons of the presented time periods must be carefully considered. Nonetheless, all calculable survival curves are depicted to facilitate the comparison of long time follow-up analyses of relative survival between particular cancers.

Period of diagnosis		
1998+		
n=6,473		
Years	obs. %	rel. %
0	100.0	100.0
1	92.9	94.7
2	87.5	90.9
3	83.0	87.7
4	79.5	85.5
5	75.8	82.9
6	73.3	81.5
7	70.3	79.5
8	67.6	77.7
9	65.3	76.4
10	63.0	74.9
Median	16.0	

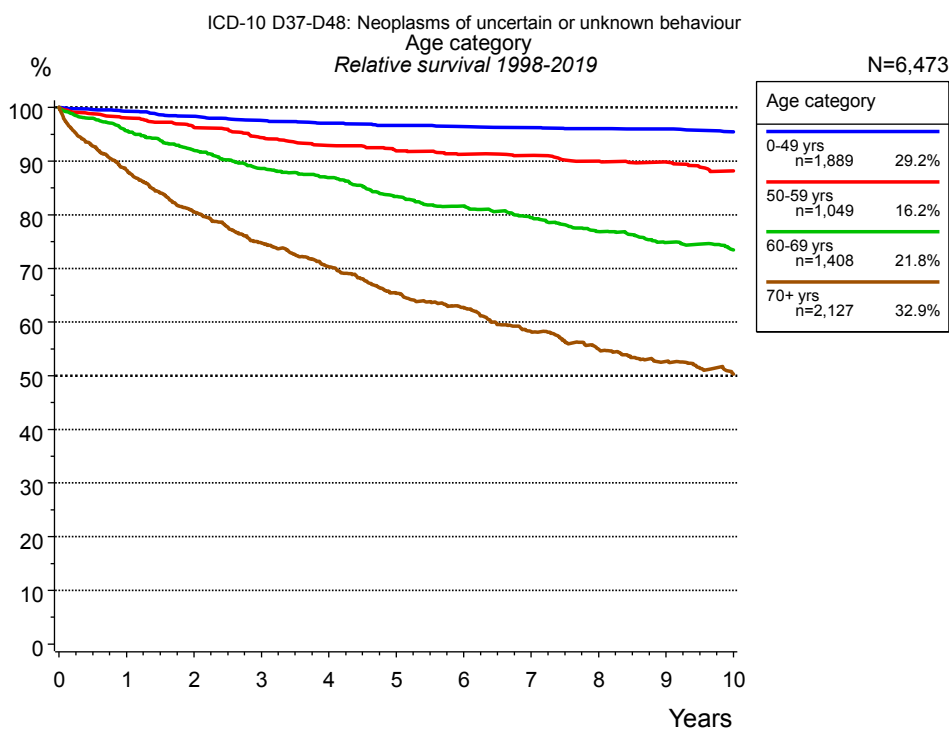
**Table 1b.** Observed (obs.) and relative (rel.) survival of patients with NPL unknown behaviour by period of diagnosis for period 1998-2019 (N=6,473).



**Figure 2a.** Survival of patients with NPL unknown behaviour by sex. Included in the evaluation are 6,473 cases diagnosed between 1998 and 2019.

Years	Sex			
	Male n=2,614		Female n=3,859	
	obs. %	rel. %	obs. %	rel. %
0	100.0	100.0	100.0	100.0
1	90.4	92.7	94.6	96.1
2	83.6	87.8	90.2	93.0
3	77.7	83.5	86.7	90.6
4	73.4	80.7	83.8	88.8
5	68.8	77.3	80.6	86.7
6	65.7	75.2	78.6	85.7
7	62.0	72.7	76.3	84.3
8	58.8	70.3	73.9	82.8
9	56.4	68.8	71.8	81.6
10	53.5	66.6	69.9	80.6
11	52.1	66.1	67.8	79.3
12	49.7	64.5	65.2	77.4
13	47.1	62.3	63.6	76.8
14	44.7	60.4	61.2	75.0
15	43.4	59.7	59.2	73.7
Median	11.9		18.7	

**Table 2b.** Observed (obs.) and relative (rel.) survival of patients with NPL unknown behaviour by sex for period 1998-2019 (N=6,473).



**Figure 3a.** Relative survival of patients with NPL unknown behaviour by age category. Included in the evaluation are 6,473 cases diagnosed between 1998 and 2019.

Years	Age category							
	0-49 yrs n=1,889		50-59 yrs n=1,049		60-69 yrs n=1,408		70+ yrs n=2,127	
	obs. %	rel. %	obs. %	rel. %	obs. %	rel. %	obs. %	rel. %
0	100.0	100.0	100.0	100.0	100.0	100.0	100.0	100.0
1	99.2	99.3	97.6	98.1	94.6	95.7	84.0	88.3
2	98.2	98.4	95.4	96.3	89.8	92.0	73.0	80.5
3	97.3	97.6	93.0	94.4	85.3	88.6	64.4	74.7
4	96.6	97.0	91.0	92.9	82.4	86.9	57.6	70.3
5	96.1	96.6	89.4	91.9	77.9	83.4	50.6	65.3
6	95.8	96.4	88.2	91.3	75.0	81.7	46.0	62.7
7	95.4	96.3	87.4	91.0	71.7	79.5	40.1	58.2
8	95.1	96.0	85.7	90.0	68.0	76.9	35.5	54.9
9	94.8	96.0	84.6	89.8	64.7	74.8	31.8	52.6
10	94.1	95.5	82.4	88.2	62.1	73.5	28.2	50.3
Median					15.0		5.1	

**Table 3b.** Observed (obs.) and relative (rel.) survival of patients with NPL unknown behaviour by age category for period 1998-2019 (N=6,473).

## Shortcuts

MCR	Munich Cancer Registry, Germany	
NCI	National Cancer Institute, USA	
SEER	Surveillance, Epidemiology, and End Results, USA	
UICC	Union for International Cancer Control, Geneva	
DCO	Death certificate only	Death certificate provides the only notification to the registry.
NA	Not available	
NOS	Not otherwise specified	
OS	Overall/Observed survival	Overall/Observed survival (Kaplan-Meier estimate) Date of entry: diagnosis Event: death from any cause
RS	Relative survival	Survival compared to “general population”, ratio of observed to expected survival (Ederer II method), reflecting cancer specific survival
AS	Assembled survival	Assembled chart of observed, expected, relative survival
CS	Conditional survival	Survival probability under the condition of surviving a given period of time
TTP	Time to progression	Time to first progression / relapse Date of entry: diagnosis Event: (progression / relapse): first local-, lymph node recurrence, distant metastasis or unspecified progression
1-KM		1 minus Kaplan-Meier estimator ("inverse" Kaplan-Meier estimator)
CI		Cumulative incidence Death as competing risk (according to Kalbfleisch und Prentice)
PPS	Post-progression survival	Survival since first progression / relapse (Kaplan-Meier estimate) Date of entry (progression / relapse): first local-, lymph node recurrence, distant metastasis or unspecified progression Event: death from any cause

## Recommended Citation

Munich Cancer Registry. Survival ICD-10 D37-D48: NPL unknown behaviour [Internet]. 2021 [updated 2021 Jan 28; cited 2021 Mar 1]. Available from: <https://www.tumorregister-muenchen.de/en/facts/surv/sD3748E-ICD-10-D37-D48-NPL-unknown-behaviour-survival.pdf>

## Copyright

The content of the public web site provided by the Munich Cancer Registry is available worldwide and free of charge. All documents are free to download, utilize, copy, print-out and distribute, providing that the MCR is referenced.

## Disclaimer

The Munich Cancer Registry reserves the right to not be responsible for the topicality, correctness, completeness or quality of the information provided. Liability claims regarding damage caused by the use of any information provided, including any kind of information which is incomplete or incorrect, will therefore be rejected.