

Munich Cancer Registry



- ▶ Incidence and Mortality
- ▶ Selection Matrix
- ▶ Homepage
- ▶ *Deutsch*

ICD-10 D45: Polycythaemia vera

Survival

Year of diagnosis	1988-1997	1998-2020
Patients	81	777
Diseases	81	777
Cases evaluated	74	429
Creation date	04/15/2022	
Database export	12/20/2021	
Population	4.92 m	



Munich Cancer Registry
Cancer Registry Bavaria - Upper Bavaria Regional Center
at Klinikum Grosshadern/IBE
Marchioninstr. 15
Munich, 81377
Germany

<https://www.tumorregister-muenchen.de/en>

https://www.tumorregister-muenchen.de/en/facts/surv/sD45__E-ICD-10-D45-Polycythaemia-vera-survival.pdf

Index of figures and tables

Fig./Tbl.		Page
1a	Relative survival by period of diagnosis (chart)	3
1b	Survival by period of diagnosis (table)	3
2a	Survival by sex (chart)	4
2b	Survival by sex (table)	4
3a	Relative survival by age category (chart)	5
3b	Survival by age category (table)	5

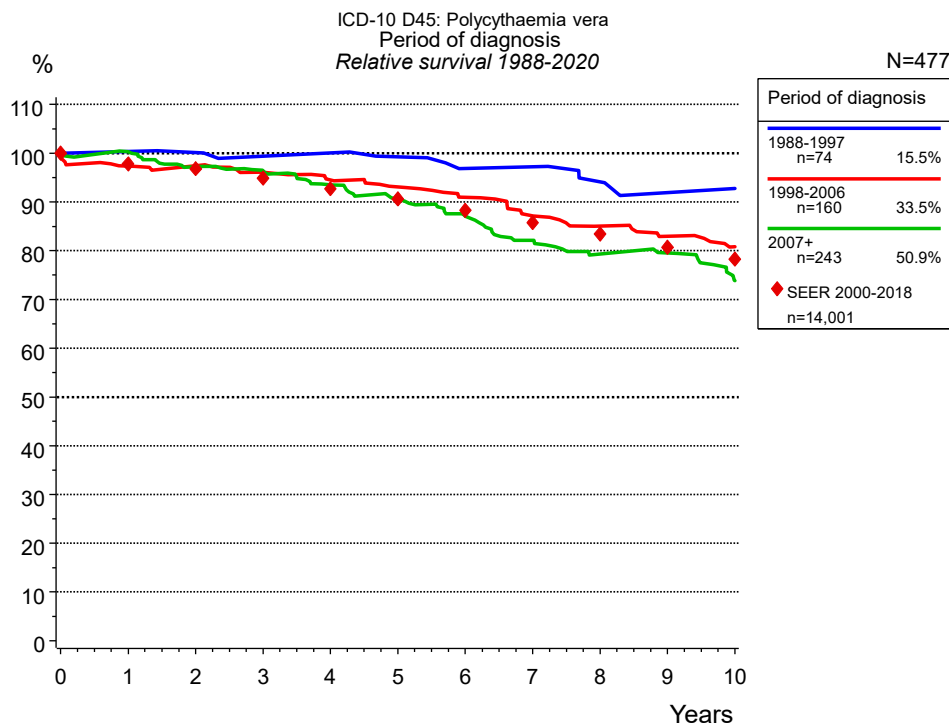


Figure 1a. Relative survival of patients with polycythaemia vera by period of diagnosis. Included in the evaluation are 477 cases diagnosed between 1988 and 2020.

The survival results of the SEER program (Surveillance, Epidemiology, and End Results) of the American National Cancer Institute (NCI) are summarized as the period of diagnosis from 2000 to 2018, and are represented by colored diamonds in order to facilitate comparisons between MCR and SEER.

The presented survival curves are derived from clinical records with valid follow-up informations, which means that death certificate cases (DCO) cases are omitted from the analysis. With this one restriction, the MCR has provided population-based statistics since 1998, collecting data on all cancer cases in the region of southern Bavaria. Historical data of previous time periods can be heavily selected, therefore, univariate survival comparisons of the presented time periods must be carefully considered. Nonetheless, all calculable survival curves are depicted to facilitate the comparison of long time follow-up analyses of relative survival between particular cancers.

Years	Period of diagnosis					
	1988-1997 n=74		1998-2006 n=160		2007+ n=243	
	obs. %	rel. %	obs. %	rel. %	obs. %	rel. %
0	100.0	100.0	100.0	100.0	100.0	100.0
1	100.0	100.3	95.6	97.4	97.9	100.3
2	98.6	100.1	93.6	97.4	92.9	97.3
3	95.9	99.4	89.8	96.1	89.8	96.4
4	95.9	100.1	86.5	94.5	85.2	93.5
5	93.2	99.3	83.3	93.1	80.0	90.5
6	89.2	96.9	79.4	90.9	75.6	87.1
7	89.2	97.2	74.8	87.2	69.5	82.1
8	85.1	94.2	70.9	85.1	65.0	79.3
9	81.1	91.9	67.7	82.9	63.7	79.6
10	81.1	92.8	64.4	80.8	57.3	73.8
Median	17.8		13.3		11.8	

Table 1b. Observed (obs.) and relative (rel.) survival of patients with polycythaemia vera by period of diagnosis for period 1988-2020 (N=477).

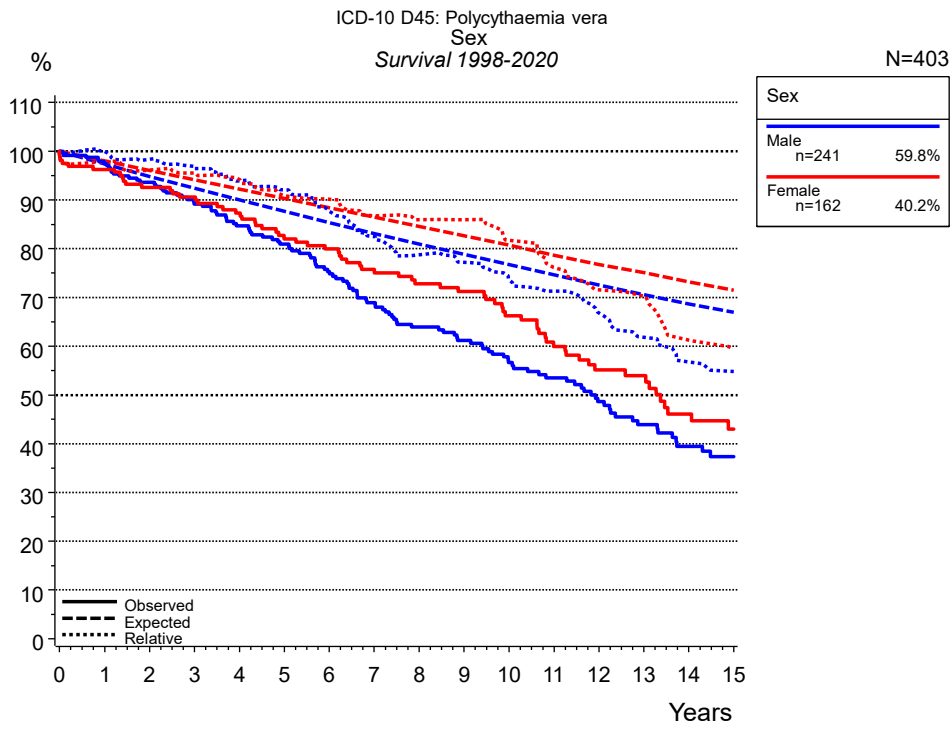


Figure 2a. Survival of patients with polycythaemia vera by sex. Included in the evaluation are 403 cases diagnosed between 1998 and 2020.

Years	Sex			
	Male n=241		Female n=162	
	obs. %	rel. %	obs. %	rel. %
0	100.0	100.0	100.0	100.0
1	97.5	100.0	96.3	97.9
2	93.6	98.4	92.5	96.1
3	89.2	96.4	90.6	95.6
4	84.7	93.9	87.4	94.1
5	81.0	92.1	82.0	90.8
6	75.3	87.7	79.9	90.2
7	69.0	82.5	75.7	86.7
8	63.9	78.7	72.8	85.9
9	61.2	77.2	71.2	85.9
10	56.6	73.6	66.2	81.7
11	53.5	71.3	59.9	76.1
12	48.6	66.7	55.1	71.6
13	43.9	61.9	53.9	70.3
14	39.5	56.7	46.1	61.2
15	37.4	54.8	43.0	59.5
Median	11.9		13.4	

Table 2b. Observed (obs.) and relative (rel.) survival of patients with polycythaemia vera by sex for period 1998-2020 (N=403).

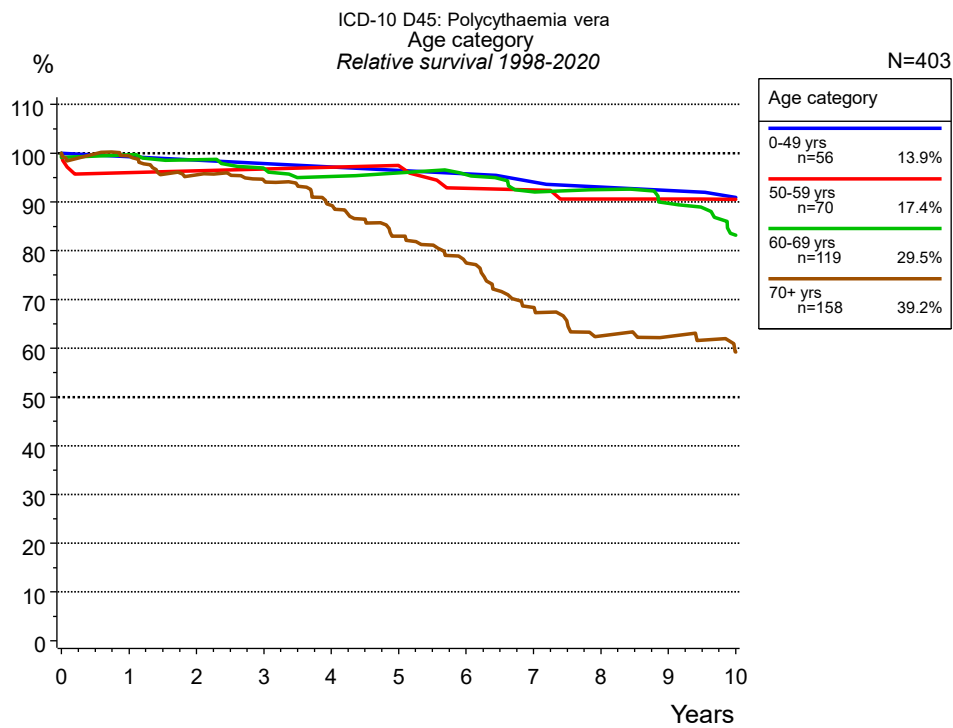


Figure 3a. Relative survival of patients with polycythaemia vera by age category. Included in the evaluation are 403 cases diagnosed between 1998 and 2020.

Years	Age category							
	0-49 yrs n=56		50-59 yrs n=70		60-69 yrs n=119		70+ yrs n=158	
	obs. %	rel. %	obs. %	rel. %	obs. %	rel. %	obs. %	rel. %
0	100.0	100.0	100.0	100.0	100.0	100.0	100.0	100.0
1	100.0	99.3	95.7	96.1	99.2	99.7	94.9	99.4
2	100.0	98.6	95.7	96.4	96.6	98.6	87.2	95.6
3	98.1	97.9	95.7	96.8	93.0	96.9	81.9	94.4
4	98.1	97.2	95.7	97.2	90.4	95.2	73.9	89.3
5	96.2	96.5	94.0	97.5	89.5	95.9	64.9	83.0
6	96.2	95.8	88.9	92.8	87.6	95.6	57.7	77.5
7	94.0	94.1	88.9	92.5	83.1	92.0	48.0	68.3
8	91.9	93.0	85.3	90.6	81.2	92.5	40.6	62.5
9	91.9	92.3	85.3	90.6	77.2	89.7	37.9	62.4
10	89.5	90.9	83.3	90.5	69.8	83.2	33.2	59.2
Median					13.5		6.7	

Table 3b. Observed (obs.) and relative (rel.) survival of patients with polycythaemia vera by age category for period 1998-2020 (N=403).

Shortcuts

MCR	Munich Cancer Registry, Germany	
NCI	National Cancer Institute, USA	
SEER	Surveillance, Epidemiology, and End Results, USA	
UICC	Union for International Cancer Control, Geneva	
DCO	Death certificate only	Death certificate provides the only notification to the registry.
NA	Not available	
NOS	Not otherwise specified	
OS	Overall/Observed survival	Overall/Observed survival (Kaplan-Meier estimate) Date of entry: diagnosis Event: death from any cause
RS	Relative survival	Survival compared to “general population”, ratio of observed to expected survival (Ederer II method), reflecting cancer specific survival
AS	Assembled survival	Assembled chart of observed, expected, relative survival
CS	Conditional survival	Survival probability under the condition of surviving a given period of time
TTP	Time to progression	Time to first progression / relapse Date of entry: diagnosis Event: (progression / relapse): first local-, lymph node recurrence, distant metastasis or unspecified progression
1-KM		1 minus Kaplan-Meier estimator ("inverse" Kaplan-Meier estimator)
CI		Cumulative incidence Death as competing risk (according to Kalbfleisch und Prentice)
PPS	Post-progression survival	Survival since first progression / relapse (Kaplan-Meier estimate) Date of entry (progression / relapse): first local-, lymph node recurrence, distant metastasis or unspecified progression Event: death from any cause

Recommended Citation

Munich Cancer Registry. Survival ICD-10 D45: Polycythaemia vera [Internet]. 2022 [updated 2022 Apr 15; cited 2022 Jun 1]. Available from: https://www.tumorregister-muenchen.de/en/facts/surv/sD45__E-ICD-10-D45-Polycythaemia-vera-survival.pdf

Copyright

The content of the public web site provided by the Munich Cancer Registry is available worldwide and free of charge. All documents are free to download, utilize, copy, print-out and distribute, providing that the MCR is referenced.

Disclaimer

The Munich Cancer Registry reserves the right to not be responsible for the topicality, correctness, completeness or quality of the information provided. Liability claims regarding damage caused by the use of any information provided, including any kind of information which is incomplete or incorrect, will therefore be rejected.