

# Munich Cancer Registry



- ▶ Incidence and Mortality
- ▶ Selection Matrix
- ▶ Homepage
- ▶ *Deutsch*

## ICD-10 D46: Myelodysplastic syndrome

### Survival

Year of diagnosis	1988-1997	1998-2016
Patients	73	2,732
Diseases	73	2,736
Cases evaluated	55	911
Creation date	08/22/2018	
Export date	08/09/2018	
Population	4.81 m	



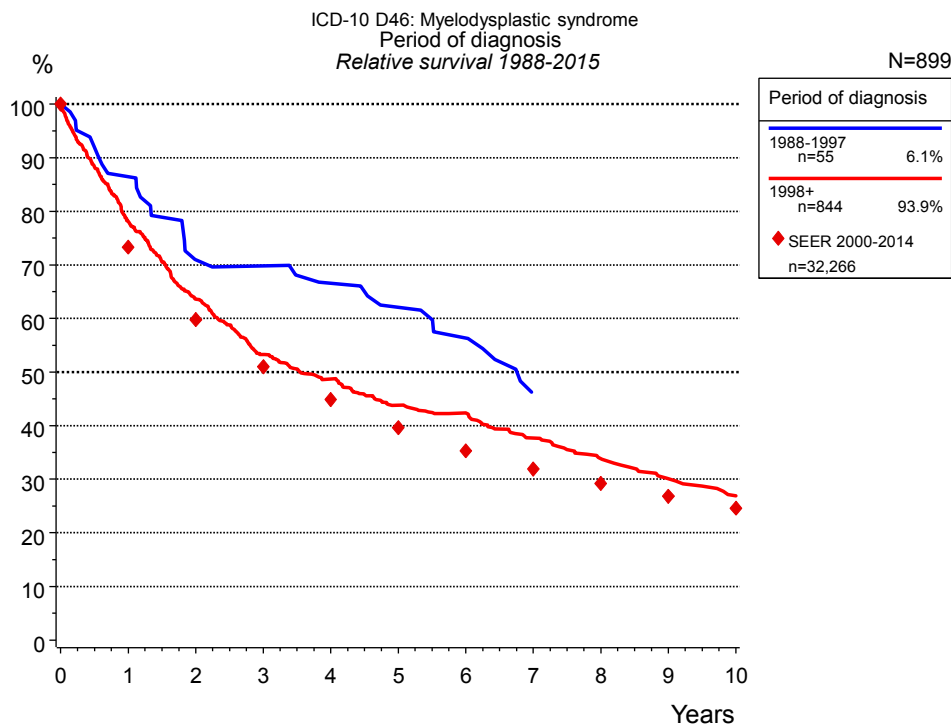
Munich Cancer Registry  
Cancer Registry Bavaria - Upper Bavaria Regional Center  
at Klinikum Grosshadern/IBE  
Marchioninstr. 15  
Munich, 81377  
Germany

<https://www.tumorregister-muenchen.de/en>

[https://www.tumorregister-muenchen.de/en/facts/surv/sD46\\_\\_E-ICD-10-D46-Myelodysplastic-syndrome-survival.pdf](https://www.tumorregister-muenchen.de/en/facts/surv/sD46__E-ICD-10-D46-Myelodysplastic-syndrome-survival.pdf)

**Index of figures and tables**

Fig./Tbl.		Page
1a	Relative survival by period of diagnosis (chart)	3
1b	Survival by period of diagnosis (table)	3
2a	Survival by sex (chart)	4
2b	Survival by sex (table)	4
3a	Relative survival by age category (chart)	5
3b	Survival by age category (table)	5



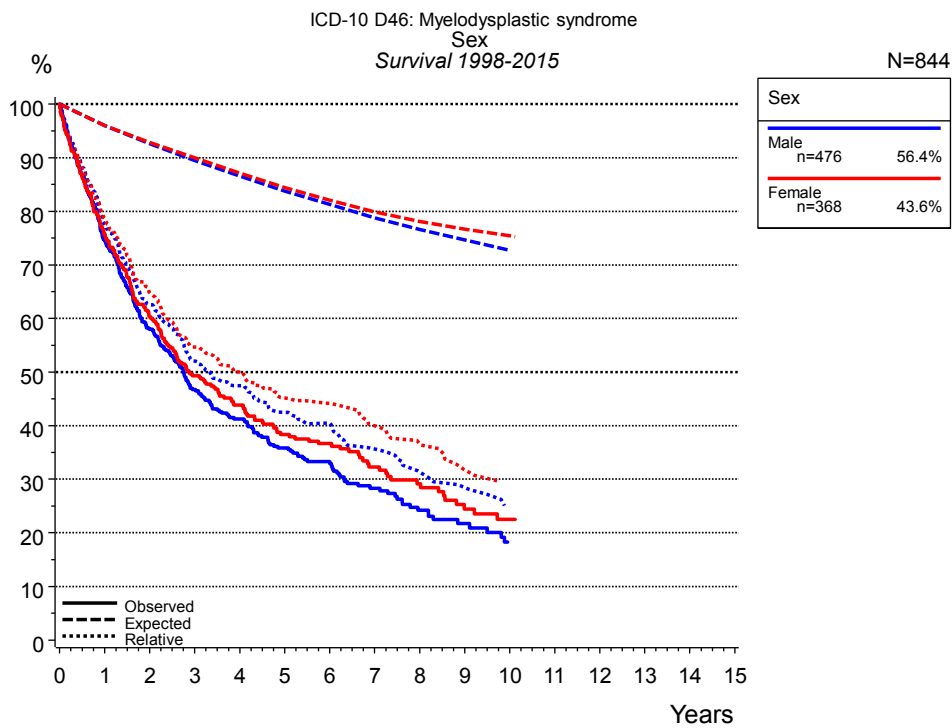
**Figure 1a.** Relative survival of patients with myelodysplastic syndrome by period of diagnosis. Included in the evaluation are 899 cases diagnosed between 1988 and 2015.

The survival results of the SEER program (Surveillance, Epidemiology, and End Results) of the American National Cancer Institute (NCI) are summarized as the period of diagnosis from 2000 to 2014, and are represented by colored diamonds in order to facilitate comparisons between MCR and SEER.

The presented survival curves are derived from clinical records with valid follow-up informations, which means that death certificate cases (DCO) cases are omitted from the analysis. With this one restriction, the MCR has provided population-based statistics since 1998, collecting data on all cancer cases in the region of southern Bavaria. Historical data of previous time periods can be heavily selected, therefore, univariate survival comparisons of the presented time periods must be carefully considered. Nonetheless, all calculable survival curves are depicted to facilitate the comparison of long time follow-up analyses of relative survival between particular cancers.

Years	Period of diagnosis			
	1988-1997 n=55		1998+ n=844	
	obs. %	rel. %	obs. %	rel. %
0	100.0	100.0	100.0	100.0
1	85.5	86.5	75.1	78.1
2	67.3	71.0	59.0	63.6
3	65.5	69.8	47.9	53.3
4	60.0	66.6	42.4	48.7
5	54.5	62.1	36.9	43.8
6	48.9	56.4	34.8	42.3
7	37.6	46.2	30.0	37.7
8			26.3	33.8
9			22.8	30.1
10			20.1	26.9

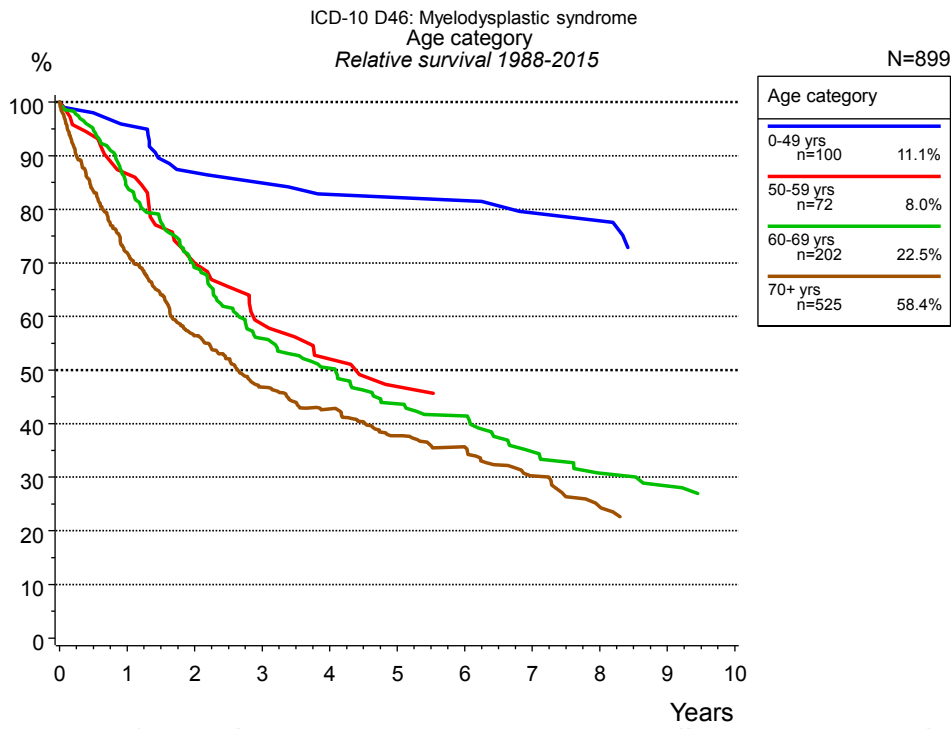
**Table 1b.** Observed (obs.) and relative (rel.) survival of patients with myelodysplastic syndrome by period of diagnosis for period 1988-2015 (N=899).



**Figure 2a.** Survival of patients with myelodysplastic syndrome by sex. Included in the evaluation are 844 cases diagnosed between 1998 and 2015.

Years	Sex			
	Male n=476		Female n=368	
	obs. %	rel. %	obs. %	rel. %
0	100.0	100.0	100.0	100.0
1	74.5	77.6	75.8	78.7
2	58.0	62.6	60.4	64.8
3	46.7	52.0	49.3	54.7
4	41.2	47.5	43.8	50.0
5	35.8	42.5	38.4	45.2
6	33.3	40.5	36.6	44.1
7	28.3	35.6	32.3	40.0
8	24.2	31.4	29.1	36.6
9	21.8	28.5	24.4	31.7
10	18.3	24.5	22.5	29.5

**Table 2b.** Observed (obs.) and relative (rel.) survival of patients with myelodysplastic syndrome by sex for period 1998-2015 (N=844).



**Figure 3a.** Relative survival of patients with myelodysplastic syndrome by age category. Included in the evaluation are 899 cases diagnosed between 1988 and 2015.

Years	Age category							
	0-49 yrs n=100		50-59 yrs n=72		60-69 yrs n=202		70+ yrs n=525	
	obs. %	rel. %	obs. %	rel. %	obs. %	rel. %	obs. %	rel. %
0	100.0	100.0	100.0	100.0	100.0	100.0	100.0	100.0
1	95.8	95.7	86.9	86.6	83.4	84.2	67.6	71.9
2	87.3	86.9	70.4	70.0	67.1	69.1	50.1	56.4
3	85.1	84.9	58.3	58.6	53.6	55.9	39.2	46.8
4	82.6	82.8	51.5	52.1	47.5	50.3	33.6	42.7
5	82.6	82.2	45.8	46.9	40.6	43.7	27.9	37.7
6	82.6	81.6	43.9	44.4	38.0	41.4	24.8	35.7
7	79.0	79.3			31.0	34.8	19.3	30.2
8	79.0	77.8			26.5	30.7	15.0	24.5
9	72.1	72.2			24.5	28.4		
10	72.1	71.1						

**Table 3b.** Observed (obs.) and relative (rel.) survival of patients with myelodysplastic syndrome by age category for period 1988-2015 (N=899).

## Shortcuts

MCR Munich Cancer Registry, Germany

NCI National Cancer Institute, USA

SEER Surveillance, Epidemiology, and End Results, USA

UICC Union for International Cancer Control, Geneva

DCO Death certificate only Death certificate provides the only notification to the registry.

NA Not available

NOS Not otherwise specified

OS Overall/Observed survival Overall/Observed survival (Kaplan-Meier estimate)  
Date of entry: diagnosis  
Event: death from any cause

RS Relative survival Survival compared to “general population”,  
ratio of observed to expected survival (Ederer II method),  
reflecting cancer specific survival

AS Assembled survival Assembled chart of  
observed, expected, relative survival

CS Conditional survival Survival probability under the condition of surviving  
a given period of time

TTP Time to progression Time to first progression / relapse  
Date of entry: diagnosis  
Event: (progression / relapse): first local-, lymph node recurrence,  
distant metastasis or unspecified progression

1-KM 1 minus Kaplan-Meier estimator  
 (“inverse” Kaplan-Meier estimator)

CI Cumulative incidence  
Death as competing risk (according to Kalbfleisch und Prentice)

PPS Post-progression survival Survival since first progression / relapse (Kaplan-Meier estimate)  
Date of entry (progression / relapse): first local-, lymph node  
recurrence, distant metastasis or unspecified progression  
Event: death from any cause

## Recommended Citation

Munich Cancer Registry. Survival ICD-10 D46: Myelodysplastic syndrome [Internet]. 2018 [updated 2018 Aug 22; cited 2018 Oct 1]. Available from: [https://www.tumorregister-muenchen.de/en/facts/surv/sD46\\_\\_E-ICD-10-D46-Myelodysplastic-syndrome-survival.pdf](https://www.tumorregister-muenchen.de/en/facts/surv/sD46__E-ICD-10-D46-Myelodysplastic-syndrome-survival.pdf)

## Copyright

The content of the public web site provided by the Munich Cancer Registry is available worldwide and free of charge. All documents are free to download, utilize, copy, print-out and distribute, providing that the MCR is referenced.

## Disclaimer

The Munich Cancer Registry reserves the right to not be responsible for the topicality, correctness, completeness or quality of the information provided. Liability claims regarding damage caused by the use of any information provided, including any kind of information which is incomplete or incorrect, will therefore be rejected.