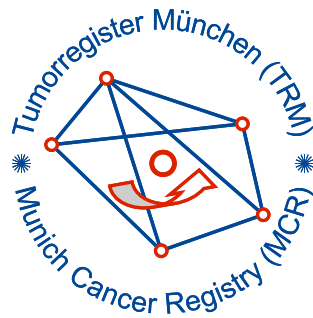


Munich Cancer Registry



- ▶ [Baseline statistics](#)
- ▶ [Selection Matrix](#)
- ▶ [Homepage](#)

Munich Cancer Registry at Munich Cancer Center
Marchioninstr. 15
Munich, 81377
Germany

<http://www.tumorregister-muenchen.de/en>

Cancer statistics: Survival

C17: Small intestine cancer

Year of diagnosis	1988-1997	1998-2011
Patients	139	1,162
Diseases	139	1,163
Creation date	04/01/2013	
Export date	01/03/2013	
Population	4.5 m	



http://www.tumorregister-muenchen.de/en/facts/surv/surv_C17__E.pdf

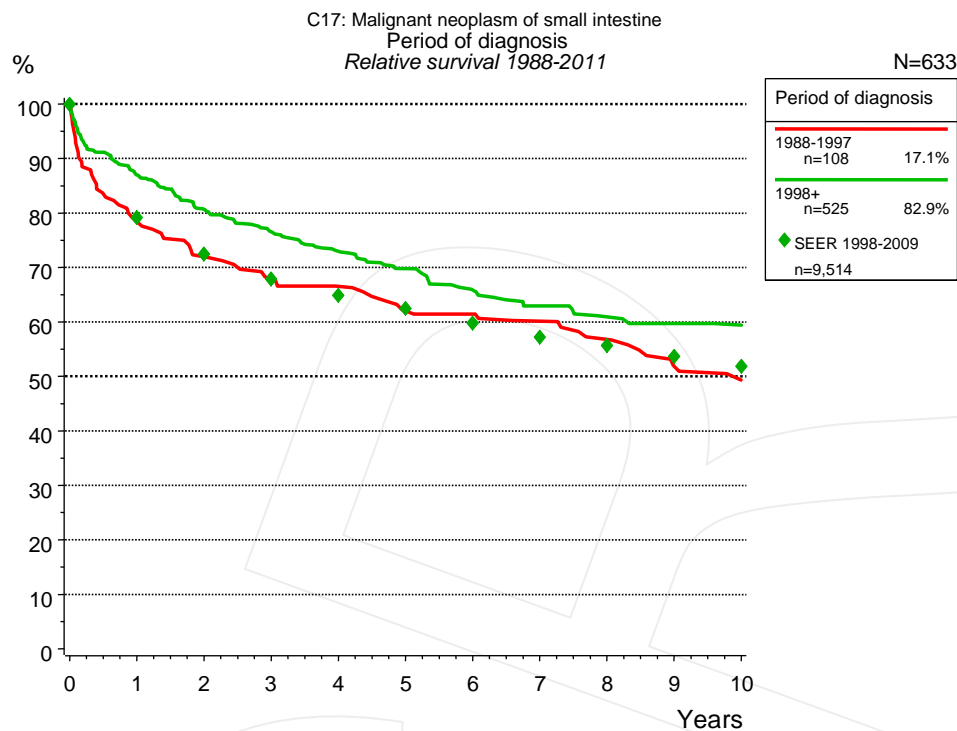


Figure 1a. Relative survival of patients with small intestine cancer by period of diagnosis. Included in the evaluation are 633 cases diagnosed between 1988 and 2011.

The survival results of the SEER program (Surveillance, Epidemiology, and End Results) of the American National Cancer Institute (NCI) are summarized as the period of diagnosis from 1998 to 2009, and are represented by green diamonds in order to facilitate comparisons between MCR and SEER.

The presented survival curves are derived from clinical records with valid follow-up informations, which means that death certificate cases (DCO) cases are omitted from the analysis. With this one restriction, the MCR has provided population-based statistics since 1998, collecting data on all cancer cases in the region of southern Bavaria. Historical data of previous time periods can be heavily selected, therefore, univariate survival comparisons of the presented time periods must be carefully considered. Nonetheless, all calculable survival curves are depicted to facilitate the comparison of long time follow-up analyses of relative survival between particular cancers.

Years	Period of diagnosis			
	1988-1997 n=108		1998+ n=525	
	obs. %	rel. %	obs. %	rel. %
0	100.0	100.0	100.0	100.0
1	75.9	78.4	85.1	87.0
2	68.5	71.9	77.3	80.6
3	63.0	67.9	71.9	76.5
4	60.2	66.6	67.3	73.0
5	54.6	62.0	63.1	69.8
6	53.7	61.4	58.3	65.9
7	50.9	60.1	54.7	63.0
8	47.2	56.8	51.8	60.9
9	41.7	51.8	50.2	59.7
10	38.7	49.3	49.0	59.4

Table 1b. Observed (obs.) and relative (rel.) survival of patients with small intestine cancer by period of diagnosis for period 1988-2011 (N=633).

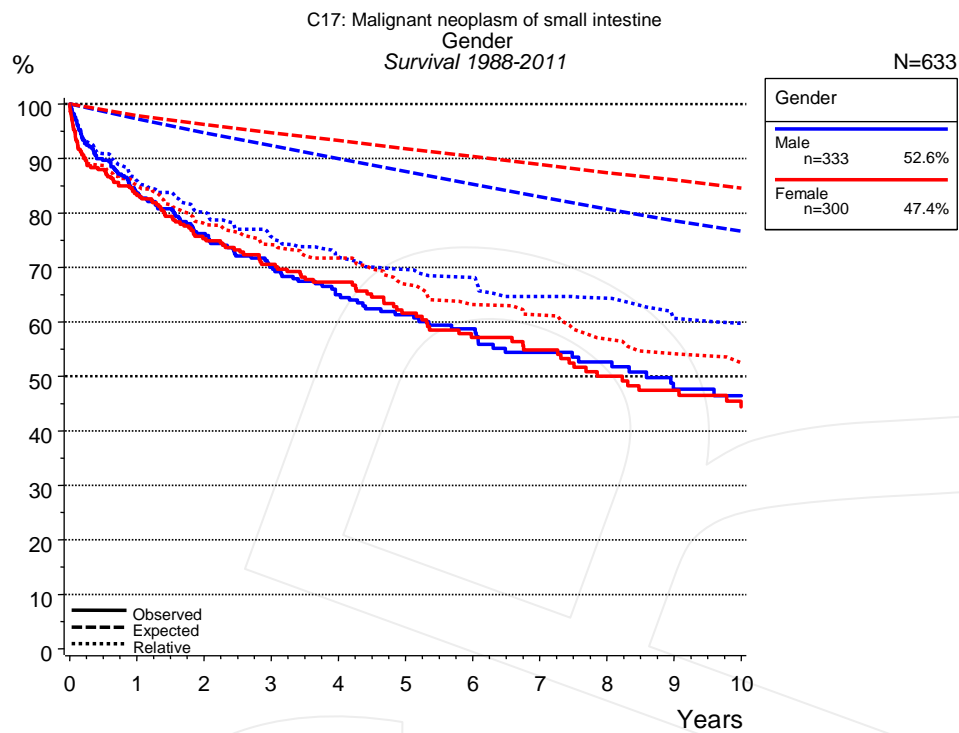


Figure 2a. Survival of patients with small intestine cancer by gender. Included in the evaluation are 633 cases diagnosed between 1988 and 2011.

Years	Gender			
	Male n=333		Female n=300	
	obs. %	rel. %	obs. %	rel. %
0	100.0	100.0	100.0	100.0
1	83.7	85.9	83.2	85.1
2	76.2	80.1	75.3	78.1
3	70.1	75.6	70.6	74.2
4	65.0	71.9	67.3	71.7
5	61.3	69.6	61.6	66.9
6	58.7	68.2	57.1	63.2
7	54.4	64.7	54.8	61.2
8	52.7	64.3	50.0	56.8
9	47.7	60.6	47.4	54.1
10	46.5	59.7	44.4	52.5

Table 2b. Observed (obs.) and relative (rel.) survival of patients with small intestine cancer by gender for period 1988-2011 (N=633).

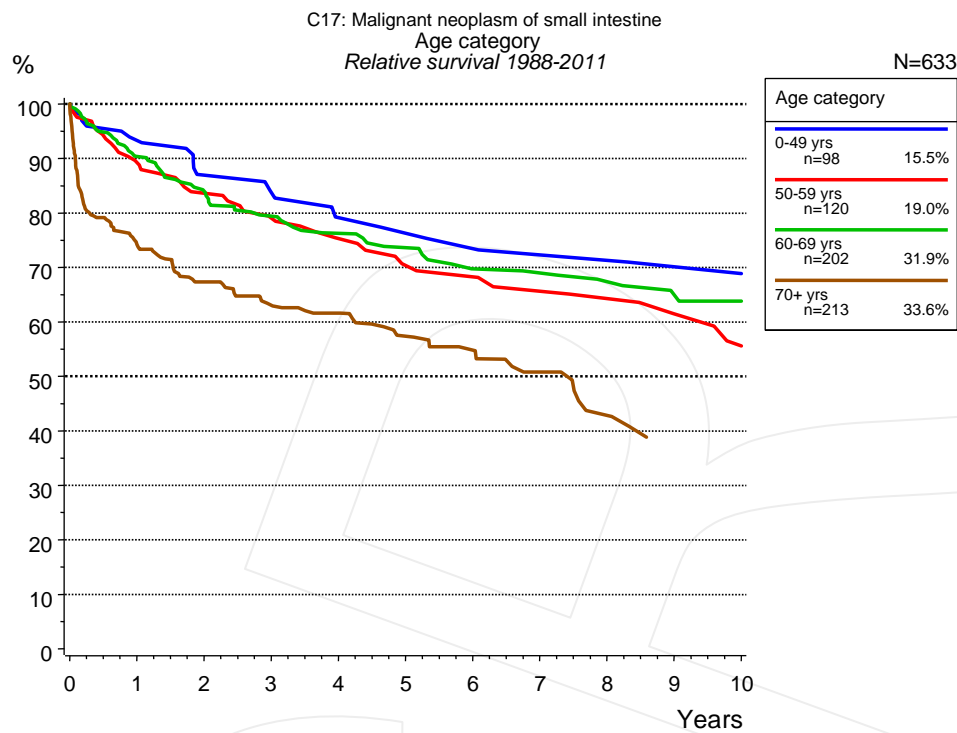


Figure 3a. Relative survival of patients with small intestine cancer by age category. Included in the evaluation are 633 cases diagnosed between 1988 and 2011.

Years	Age category							
	0-49 yrs n=98		50-59 yrs n=120		60-69 yrs n=202		70+ yrs n=213	
	obs. %	rel. %	obs. %	rel. %	obs. %	rel. %	obs. %	rel. %
0	100.0	100.0	100.0	100.0	100.0	100.0	100.0	100.0
1	93.8	93.3	89.1	89.2	89.3	90.4	70.1	74.2
2	86.7	86.9	83.0	83.6	82.0	84.0	60.6	67.3
3	83.7	83.8	78.0	79.1	76.5	79.4	53.7	63.1
4	78.5	79.2	73.6	75.3	72.3	76.3	50.2	61.6
5	76.5	76.3	68.4	70.4	68.8	73.6	43.6	57.4
6	74.3	73.5	67.1	68.3	63.4	69.7	39.7	54.9
7	72.1	72.3	63.6	65.7	62.1	69.0	34.3	50.8
8	72.1	71.3	61.7	64.3	59.2	67.4	27.8	42.9
9	69.3	70.1	57.4	61.5	55.9	64.9	23.3	38.9
10	69.3	68.9	52.3	55.6	54.1	63.8		

Table 3b. Observed (obs.) and relative (rel.) survival of patients with small intestine cancer by age category for period 1988-2011 (N=633).

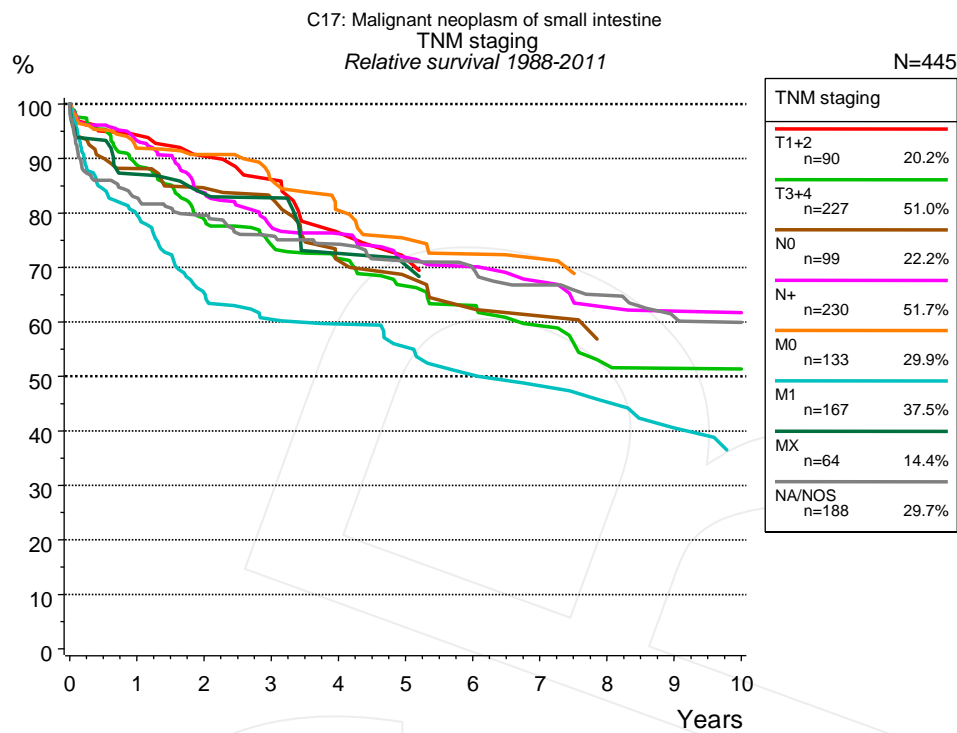


Figure 4a. Relative survival of patients with small intestine cancer by TNM staging. For 445 of 633 cases diagnosed between 1988 and 2011 valid data could be obtained for this item. The accumulated percentage exceeds the 100% value because patients are potentially considered in more than one subgroup. The grey line represents the subgroup of 188 patients with missing values regarding TNM staging (29.7% of 633 patients, the percent values of all other categories are related to n=445).

TNM staging														
Years	T1+2 n=90		T3+4 n=227		N0 n=99		N+ n=230		M0 n=133		M1 n=167		MX n=64	
	obs. %	rel. %	obs. %	rel. %	obs. %	rel. %	obs. %	rel. %	obs. %	rel. %	obs. %	rel. %	obs. %	rel. %
0	100.0	100.0	100.0	100.0	100.0	100.0	100.0	100.0	100.0	100.0	100.0	100.0	100.0	100.0
1	93.3	94.3	86.9	88.8	86.8	88.1	91.6	93.3	90.1	91.9	78.0	79.6	85.9	87.1
2	88.1	90.5	75.6	78.8	81.3	84.6	80.9	83.7	87.7	90.7	63.3	65.3	80.9	83.5
3	83.4	86.2	69.7	74.2	78.6	82.8	73.3	77.4	81.6	86.1	57.9	60.5	79.0	82.8
4	71.9	76.4	65.6	71.7	66.4	71.2	70.6	76.2	74.8	80.5	56.1	59.7	67.5	72.6
5	66.9	71.6	59.8	66.6	62.6	68.4	65.5	71.8	68.4	75.3	51.7	55.4	63.9	70.4
6	64.1	69.5	56.0	63.0	58.3	62.4	63.5	70.1	65.3	72.5	46.7	50.3	60.4	65.4
7	64.1	69.5	51.1	59.3	55.5	61.1	59.5	67.4	63.3	71.6	43.7	48.3		
8	64.1	69.5	44.4	52.1	49.1	56.7	54.8	62.7	58.8	68.9	40.3	45.3		
9	64.1	69.5	42.9	51.5	49.1	56.0	53.0	62.0	58.8	68.9	35.0	40.5		
10	64.1	69.5	42.9	51.4	49.1	55.2	53.0	61.7	58.8	68.9				

TNM staging		
<i>cont'd</i>	NA/NOS n=188	
Years	obs. %	rel. %
0	100.0	100.0
1	80.6	82.7
2	75.5	79.6
3	70.1	75.8
4	67.4	74.3
5	62.7	71.2
6	60.0	69.9
7	56.2	66.8
8	53.1	64.8
9	48.6	60.9
10	47.3	59.9

Table 4b. Observed (obs.) and relative (rel.) survival of patients with small intestine cancer by TNM staging for period 1988-2011 (N=1,010).

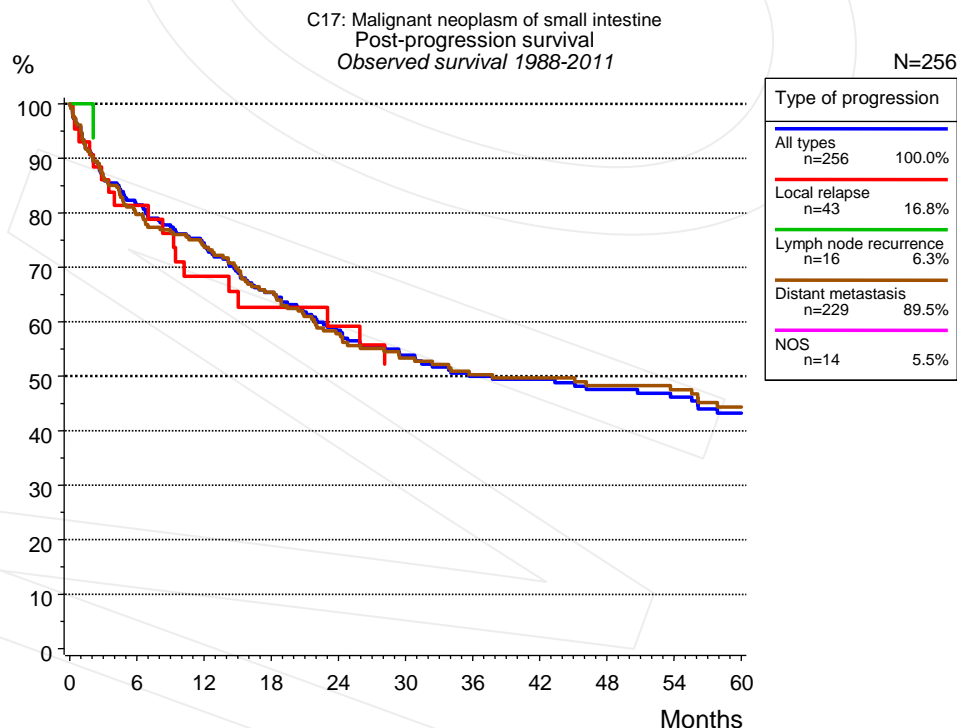


Figure 5a. Observed post-progression survival of 256 patients with small intestine cancer diagnosed between 1988 and 2011 (incl. M1). These 256 patients with documented progression events during their course of disease represent 40.4% of the totally 633 evaluated cases. Patients with cancer relapse documented via death certificates only were excluded (n=40, 6.3%). Multiple progression types on different sites are included in the evaluation even when not occurring synchronously. The NOS (not otherwise specified) class is included under the condition, that it is

the one and only progression type during the course of disease. Subgroups with sample size <15 are dropped from the chart.

Medical record documentation often lacks the linguistic severity to distinguish between local relapse, regional lymph node metastasis and distant spread in solid cancers. Frequently, the statement "not specified" is the only information in registries regarding relapse of the disease. The category "All types" denotes all cases who suffered from at least one relapse during the course of disease (incl. primary M1-status). Although, the real number of relapsed patients is likely to be much higher. The accumulated percentage of patients with local relapse or distant metastasis exceeds the 100% value because patients are potentially considered in more than one subgroup.

Months	Type of progression				NOS n=14 %
	All types n=256 %	Local relapse n=43 %	Lymph node recurrence n=16 %	Distant metastasis n=229 %	
0	100.0	100.0	100.0	100.0	100.0
12	74.0	68.4		73.6	
24	58.4	59.2		57.8	
36	50.0			50.3	
48	47.5			48.3	
60	43.2			44.4	

Table 5b. Observed post-progression survival of patients with small intestine cancer for period 1988-2011 (N=256).

Shortcuts

AS	Assembled survival chart (observed, expected, relative)
CS	Conditional survival
DCO	Death certificate only. The death certificate provides the only notification to the registry.
MCR	Munich Cancer Registry, Germany (Tumorregister München)
NA	Not available
NCI	National Cancer Institute, USA
NOS	Not otherwise specified
OS	Observed/overall survival (Kaplan-Meier estimate)
PPS	Post-progression survival
RS	Relative Survival. Ratio of observed and expected survival (derived from the normal population)
SEER	Surveillance, Epidemiology, and End Results, USA
TTP	Time to progression Date of entry: Date of diagnosis Event (Progression): First local recurrence, lymph node relapse or distant metastasis, unspecified recurrence First all-cause recurrence is illustrated by survival curves (Kaplan-Meier estimate). First local recurrence, lymph node relapse or distant metastasis are depicted cumulatively, where applicable ("reverse" Kaplan-Meier estimate).
UICC	Union for International Cancer Control, Geneva

Recommended Citation

Munich Cancer Registry. Survival C17: Small intestine cancer [Internet]. 2013 [updated 2013 Apr 1; cited 2013 May 1]. Available from: http://www.tumorregister-muenchen.de/en/facts/surv/surv_C17__E.pdf

Copyright

The content of the public web site provided by the Munich Cancer Registry is available worldwide and free of charge. All documents are free to download, utilize, copy, print-out and distribute, providing that the MCR is referenced.

Disclaimer

The Munich Cancer Registry reserves the right to not be responsible for the topicality, correctness, completeness or quality of the information provided. Liability claims regarding damage caused by the use of any information provided, including any kind of information which is incomplete or incorrect, will therefore be rejected.

Index of figures and tables

Fig./Tbl.		Page
1a	Relative survival by period of diagnosis (chart)	2
1b	Survival by period of diagnosis (table)	2
2a	Survival by gender (chart)	3
2b	Survival by gender (table)	3
3a	Relative survival by age category (chart)	4
3b	Survival by age category (table)	4
4a	Relative survival by TNM staging (chart)	5
4b	Survival by TNM staging (table)	5
5a	Observed post-progression survival (chart)	6
5b	Observed post-progression survival (table)	7