

Munich Cancer Registry



- ▶ [Baseline statistics](#)
- ▶ [Selection Matrix](#)
- ▶ [Homepage](#)

Munich Cancer Registry at Munich Cancer Center
Marchioninstr. 15
Munich, 81377
Germany

<http://www.tumorregister-muenchen.de/en>

Cancer statistics: Survival

C18: Colon cancer

Year of diagnosis	1978-1987	1988-1997	1998-2011
Patients	1,581	6,253	23,981
Diseases	1,597	6,328	24,389
Creation date	04/01/2013		
Export date	01/03/2013		
Population	4.5 m		



http://www.tumorregister-muenchen.de/en/facts/surv/surv_C18__E.pdf

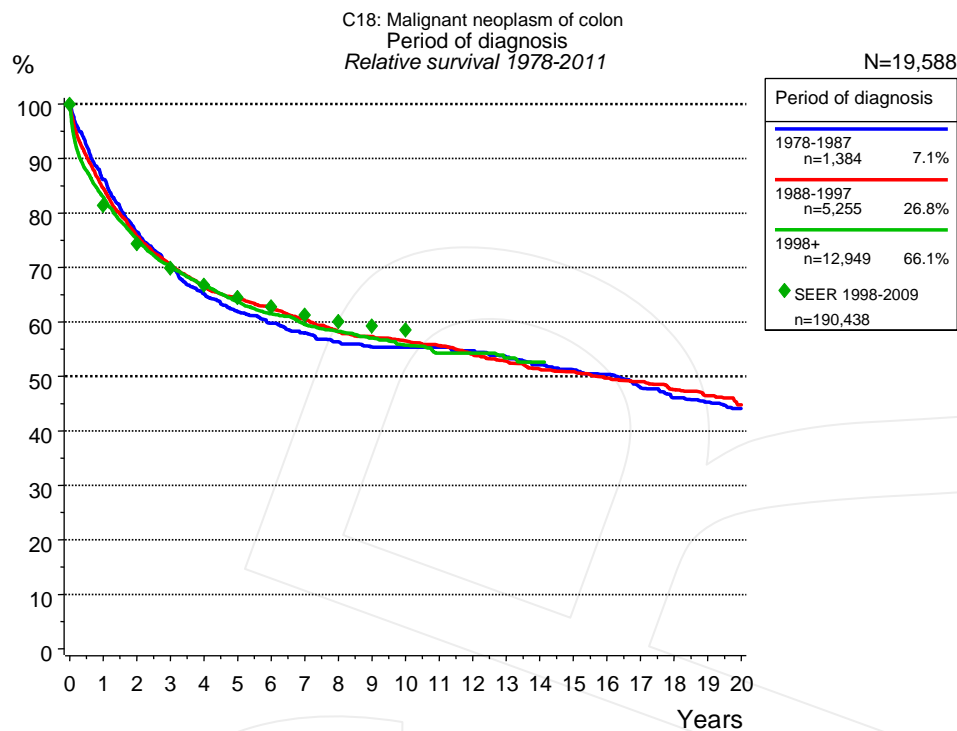


Figure 1a. Relative survival of patients with colon cancer by period of diagnosis. Included in the evaluation are 19,588 cases diagnosed between 1978 and 2011.

The survival results of the SEER program (Surveillance, Epidemiology, and End Results) of the American National Cancer Institute (NCI) are summarized as the period of diagnosis from 1998 to 2009, and are represented by green diamonds in order to facilitate comparisons between MCR and SEER.

The presented survival curves are derived from clinical records with valid follow-up informations, which means that death certificate cases (DCO) cases are omitted from the analysis. With this one restriction, the MCR has provided population-based statistics since 1998, collecting data on all cancer cases in the region of southern Bavaria. Historical data of previous time periods can be heavily selected, therefore, univariate survival comparisons of the presented time periods must be carefully considered. Nonetheless, all calculable survival curves are depicted to facilitate the comparison of long time follow-up analyses of relative survival between particular cancers.

Years	Period of diagnosis					
	1978-1987		1988-1997		1998+	
	n=1,384		n=5,255		n=12,949	
	obs. %	rel. %	obs. %	rel. %	obs. %	rel. %
0	100.0	100.0	100.0	100.0	100.0	100.0
1	83.4	86.1	81.2	84.5	79.5	82.9
2	71.6	76.4	70.1	75.7	69.5	75.2
3	63.7	70.2	62.8	70.4	62.4	70.1
4	57.2	65.2	57.1	66.4	57.4	66.9
5	52.5	61.9	53.3	64.4	52.8	63.9
6	49.1	59.8	49.7	62.5	48.9	61.5
7	45.9	58.0	46.3	60.4	45.7	59.5
8	43.1	56.4	42.9	58.1	43.0	58.3
9	40.8	55.5	40.7	57.3	40.5	57.0
10	39.9	55.4	38.6	56.5	38.1	55.8
11	37.9	55.4	36.6	55.7	35.7	54.3
12	36.1	54.8	34.2	54.0	34.6	54.3
13	33.9	53.6	32.1	52.8	32.2	53.4
14	31.7	52.1	30.0	51.3	30.5	52.6
15	29.9	51.2	28.6	50.8		
16	28.4	50.4	26.9	49.7		
17	25.8	47.9	25.6	49.0		
18	23.9	46.1	23.7	47.6		
19	22.6	45.3	22.1	46.5		
20	21.1	44.1	20.5	44.8		

Table 1b. Observed (obs.) and relative (rel.) survival of patients with colon cancer by period of diagnosis for period 1978-2011 (N=19,588).

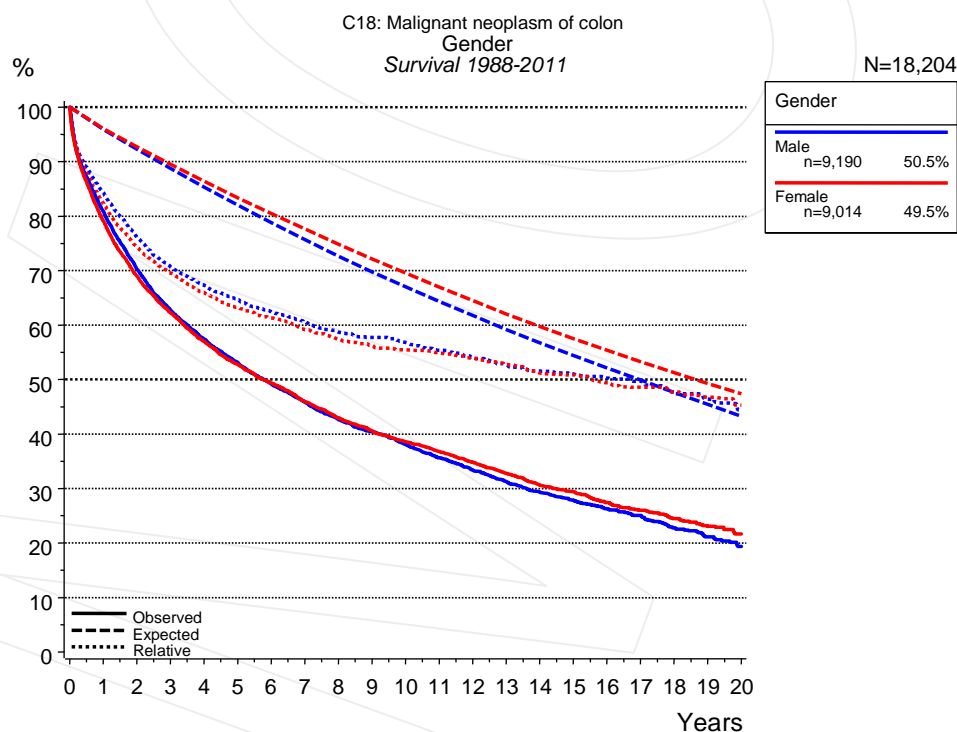


Figure 2a. Survival of patients with colon cancer by gender. Included in the evaluation are 18,204 cases diagnosed between 1988 and 2011.

Years	Gender			
	Male n=9,190		Female n=9,014	
	obs. %	rel. %	obs. %	rel. %
0	100.0	100.0	100.0	100.0
1	80.9	84.3	79.1	82.3
2	70.3	76.2	69.0	74.4
3	62.8	70.7	62.2	69.5
4	57.4	67.2	57.0	66.0
5	53.2	64.8	52.8	63.3
6	49.1	62.4	49.3	61.3
7	45.8	60.6	45.9	59.2
8	42.7	58.7	43.0	57.4
9	40.4	57.7	40.6	56.3
10	38.1	56.8	38.6	55.5
11	35.7	55.3	36.7	54.8
12	33.4	54.0	34.8	53.9
13	31.2	52.7	32.7	52.8
14	29.3	51.5	30.6	51.2
15	27.8	51.0	29.4	50.8
16	26.3	50.3	27.4	49.4
17	25.0	49.7	26.0	48.6
18	22.8	47.7	24.5	47.7
19	21.2	46.4	23.1	46.7
20	19.4	44.4	21.6	45.3

Table 2b. Observed (obs.) and relative (rel.) survival of patients with colon cancer by gender for period 1988-2011 (N=18,204).

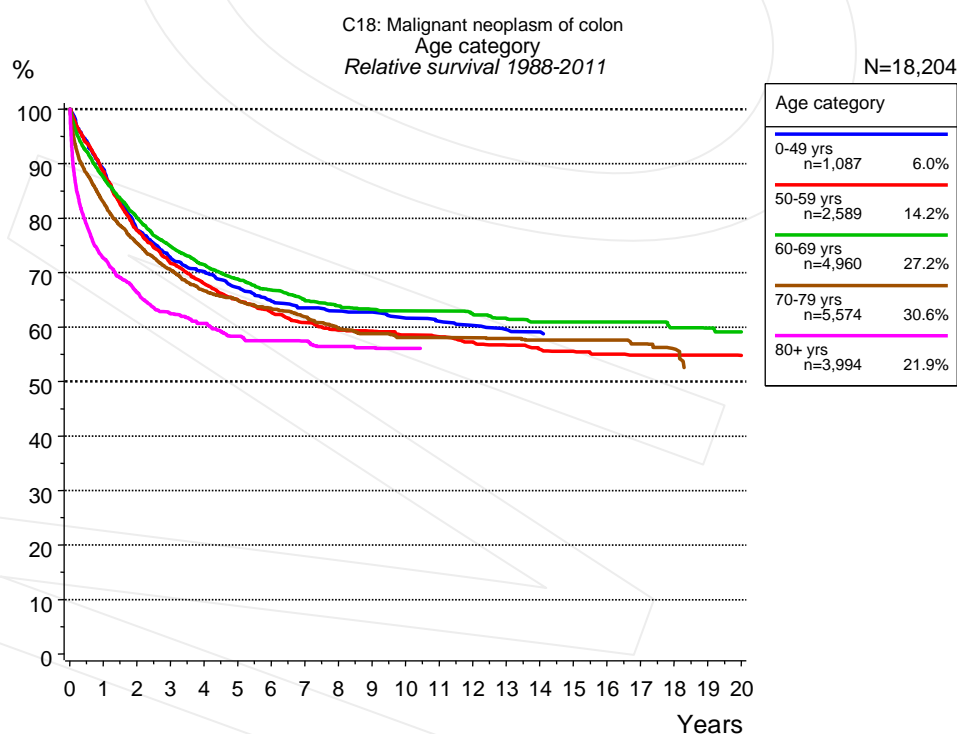


Figure 3a. Relative survival of patients with colon cancer by age category. Included in the evaluation are 18,204 cases diagnosed between 1988 and 2011.

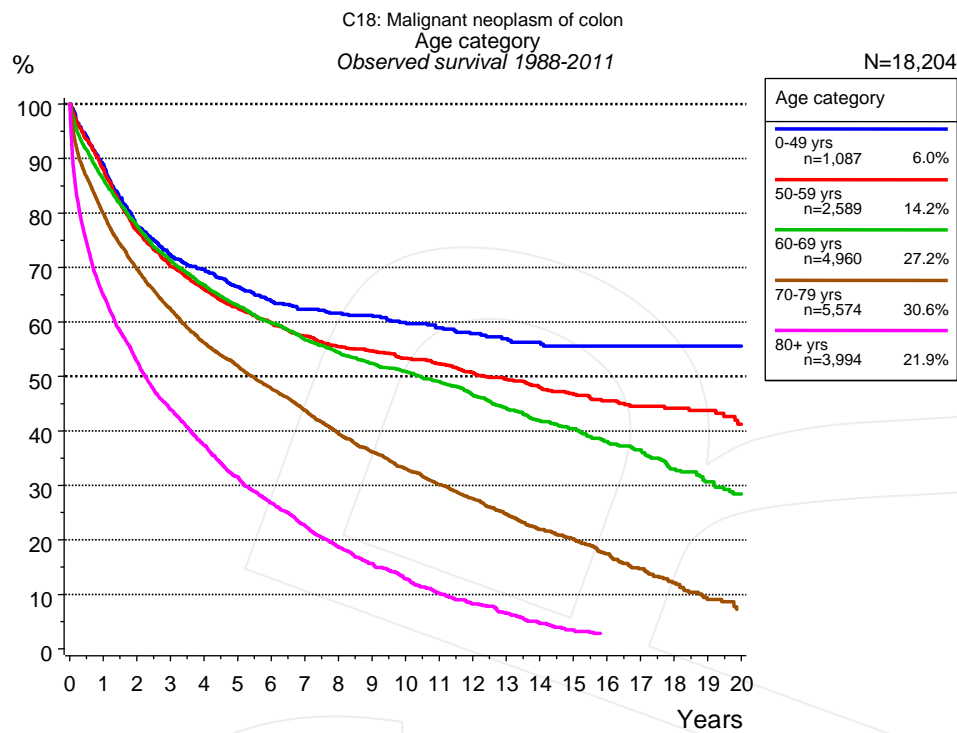


Figure 3b. Observed survival of patients with colon cancer by age category. Included in the evaluation are 18,204 cases diagnosed between 1988 and 2011.

Years	Age category									
	0-49 yrs n=1,087		50-59 yrs n=2,589		60-69 yrs n=4,960		70-79 yrs n=5,574		80+ yrs n=3,994	
	obs. %	rel. %	obs. %	rel. %	obs. %	rel. %	obs. %	rel. %	obs. %	rel. %
0	100.0	100.0	100.0	100.0	100.0	100.0	100.0	100.0	100.0	100.0
1	88.9	89.0	88.1	88.6	86.2	87.5	79.8	82.9	64.8	72.7
2	77.6	77.9	76.7	77.7	77.7	80.2	69.6	75.4	52.8	66.3
3	72.2	72.7	70.2	71.7	71.3	74.9	62.3	70.5	43.9	62.4
4	69.6	70.2	66.0	68.0	66.8	71.4	56.2	66.7	37.4	60.6
5	66.4	67.2	62.5	65.0	63.1	68.9	51.9	65.0	31.6	58.3
6	63.7	64.8	59.8	62.7	59.8	66.8	47.7	63.4	26.7	57.5
7	62.3	63.5	57.4	60.8	56.7	64.9	43.8	61.9	22.6	57.4
8	61.6	63.0	55.4	59.4	54.4	63.9	39.5	59.7	18.7	56.4
9	61.2	62.8	54.7	59.3	52.4	63.2	36.1	58.8	15.7	56.2
10	59.9	61.7	53.3	58.5	50.9	62.9	33.1	58.1	12.8	56.1
11	58.9	61.1	52.3	58.2	49.0	62.9	30.1	58.0		
12	57.8	60.3	50.7	57.2	46.7	62.5	27.5	58.0		
13	56.9	59.6	49.4	56.7	44.2	61.6	24.7	57.9		
14	56.3	59.1	48.0	55.9	41.9	60.9	21.9	57.6		
15			46.7	55.5	40.4	60.9	20.2	57.6		
16			45.5	55.0	38.0	60.9	17.4	57.6		
17			44.5	54.9	36.5	60.9	14.7	56.9		
18			44.2	54.9	33.0	59.9	12.1	56.0		
19			43.8	54.9	30.6	59.8				
20			41.2	54.8	28.4	59.2				

Table 3c. Observed (obs.) and relative (rel.) survival of patients with colon cancer by age category for period 1988-2011 (N=18,204).

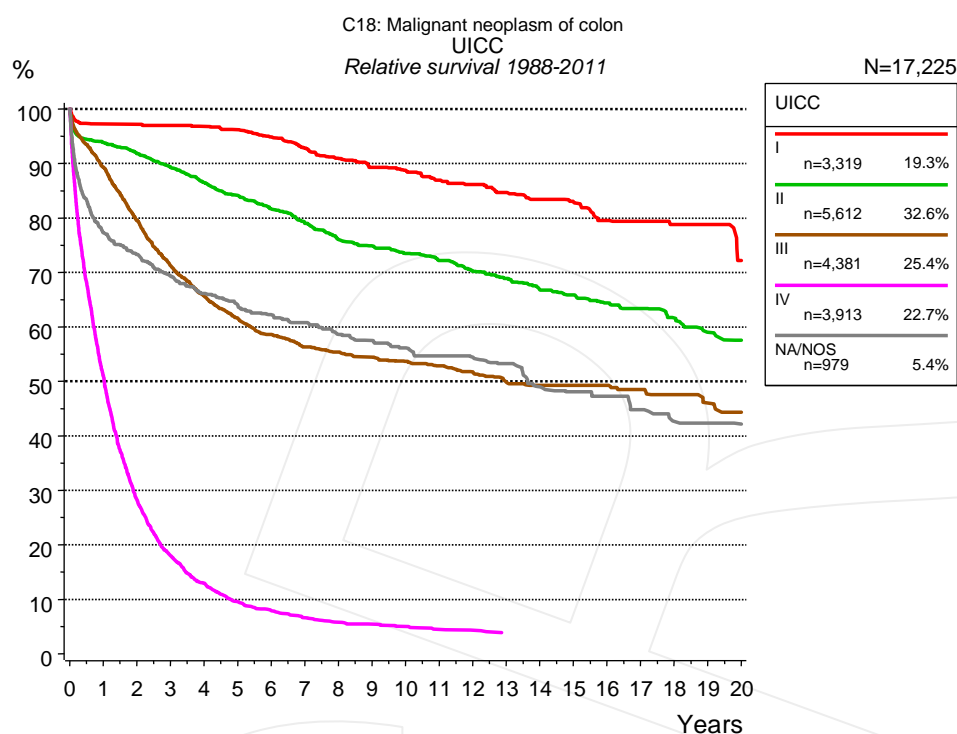


Figure 4a. Relative survival of patients with colon cancer by UICC. For 17,316 of 18,204 cases diagnosed between 1988 and 2011 valid data could be obtained for this item. For a total of 17,225 cases an evaluable classification was established. The grey line represents the subgroup of 979 patients with missing values regarding UICC (5.4% of 18,204 patients, the percent values of all other categories are related to n=17,225).

Years	UICC									
	I		II		III		IV		NA/NOS	
	n=3,319		n=5,612		n=4,381		n=3,913		n=979	
	obs. %	rel. %	obs. %	rel. %	obs. %	rel. %	obs. %	rel. %	obs. %	rel. %
0	100.0	100.0	100.0	100.0	100.0	100.0	100.0	100.0	100.0	100.0
1	94.1	97.2	89.7	93.8	85.7	89.3	49.1	50.9	73.4	77.3
2	90.9	97.2	84.2	91.9	73.5	79.5	26.5	28.2	66.8	73.3
3	87.7	97.0	78.5	89.3	63.5	71.2	16.5	18.0	60.8	69.3
4	84.2	96.8	73.0	86.5	56.5	65.7	11.5	12.9	56.0	66.1
5	80.8	96.2	68.2	84.1	51.2	61.6	8.3	9.6	52.3	64.1
6	76.6	94.8	63.5	81.6	47.0	58.6	6.7	7.9	49.0	62.3
7	72.3	92.8	59.0	79.0	43.6	56.3	5.4	6.6	46.6	60.8
8	68.2	91.0	54.6	76.0	41.4	55.4	4.6	5.8	42.9	58.6
9	64.5	89.3	51.5	74.9	39.3	54.5	4.2	5.4	40.5	57.5
10	61.6	88.7	48.6	73.5	37.3	53.6	3.8	5.0	38.0	56.1
11	58.3	86.9	45.8	72.2	35.4	52.8	3.3	4.5	36.0	54.7
12	55.5	86.2	42.8	70.2	33.5	51.7	3.0	4.3	34.0	54.4
13	52.3	84.7	40.3	68.9	31.1	49.8	2.6	3.9	32.1	53.3
14	49.7	83.4	37.5	66.8	29.8	49.3	2.6	3.8	28.2	49.0
15	47.2	82.9	35.8	65.9	28.9	49.3	2.6	3.8	26.6	48.1
16	43.6	79.5	33.5	64.4	27.6	49.3			25.3	47.2
17	42.4	79.4	32.0	63.4	26.2	48.5			22.9	44.8
18	39.9	78.8	29.5	61.6	24.7	47.5			20.7	42.7
19	38.5	78.8	27.0	59.0	22.7	46.0			19.8	42.4
20	33.8	72.2	25.4	57.6	21.3	44.3			18.7	42.2

Table 4b. Observed (obs.) and relative (rel.) survival of patients with colon cancer by UICC for period 1988-2011 (N=17,225).

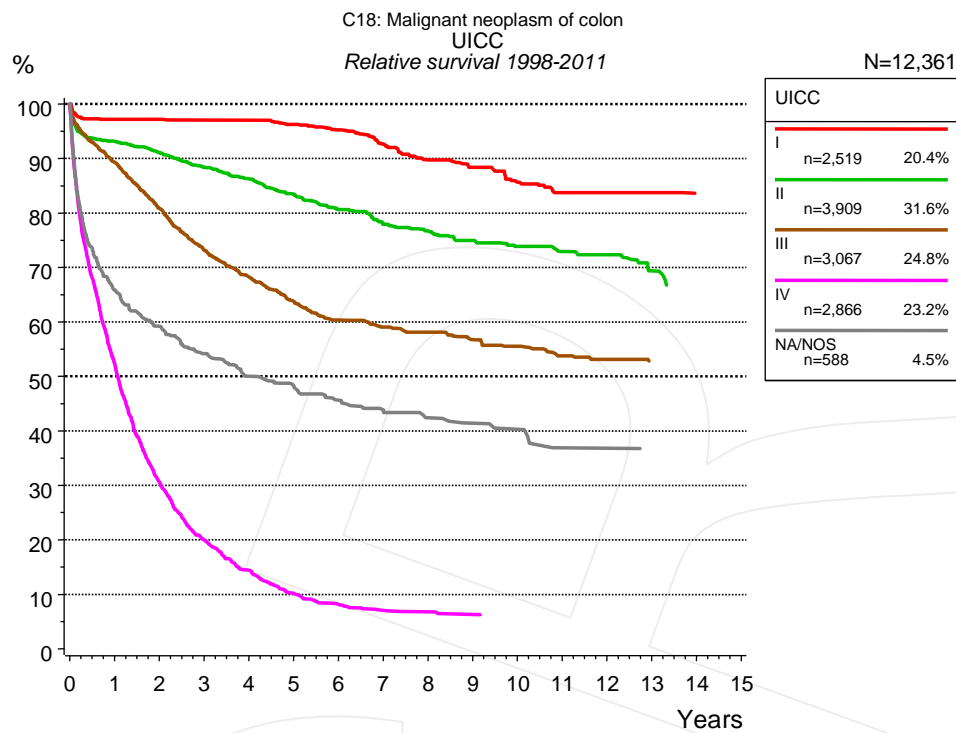


Figure 4c. Relative survival of patients with colon cancer by UICC. For 12,433 of 12,949 cases diagnosed between 1998 and 2011 valid data could be obtained for this item. For a total of 12,361 cases an evaluable classification was established. The grey line represents the subgroup of 588 patients with missing values regarding UICC (4.5% of 12,949 patients, the percent values of all other categories are related to n=12,361).

Years	UICC									
	I		II		III		IV		NA/NOS	
	n=2,519		n=3,909		n=3,067		n=2,866		n=588	
	obs. %	rel. %	obs. %	rel. %	obs. %	rel. %	obs. %	rel. %	obs. %	rel. %
0	100.0	100.0	100.0	100.0	100.0	100.0	100.0	100.0	100.0	100.0
1	94.1	97.2	88.9	93.1	85.7	89.3	50.5	52.4	62.1	65.9
2	90.9	97.2	83.4	91.1	74.7	80.8	28.8	30.6	53.3	59.2
3	88.1	97.0	77.6	88.4	65.2	73.1	18.3	20.0	46.9	54.2
4	84.8	97.0	72.7	86.3	58.7	68.3	12.9	14.4	42.0	50.1
5	81.0	96.2	67.5	83.5	52.9	63.8	8.9	10.2	39.0	48.2
6	77.1	95.3	62.6	80.6	48.3	60.3	7.0	8.1	35.8	45.6
7	72.1	92.7	58.2	77.9	45.7	59.1	5.9	7.0	33.6	43.9
8	67.1	89.8	55.1	76.7	43.5	58.1	5.6	6.8	31.3	42.4
9	63.6	88.4	51.6	74.9	40.8	56.8	5.2	6.3	29.9	41.4
10	59.2	85.7	48.8	73.9	38.6	55.5			28.6	40.3
11	55.9	83.7	46.2	72.9	36.0	53.8			25.0	36.9
12	54.9	83.7	44.3	72.3	34.6	53.1			25.0	36.8
13	52.0	83.7	40.3	69.4	32.7	52.7			23.6	35.6
14					32.7	49.9				

Table 4d. Observed (obs.) and relative (rel.) survival of patients with colon cancer by UICC for period 1998-2011 (N=12,361).

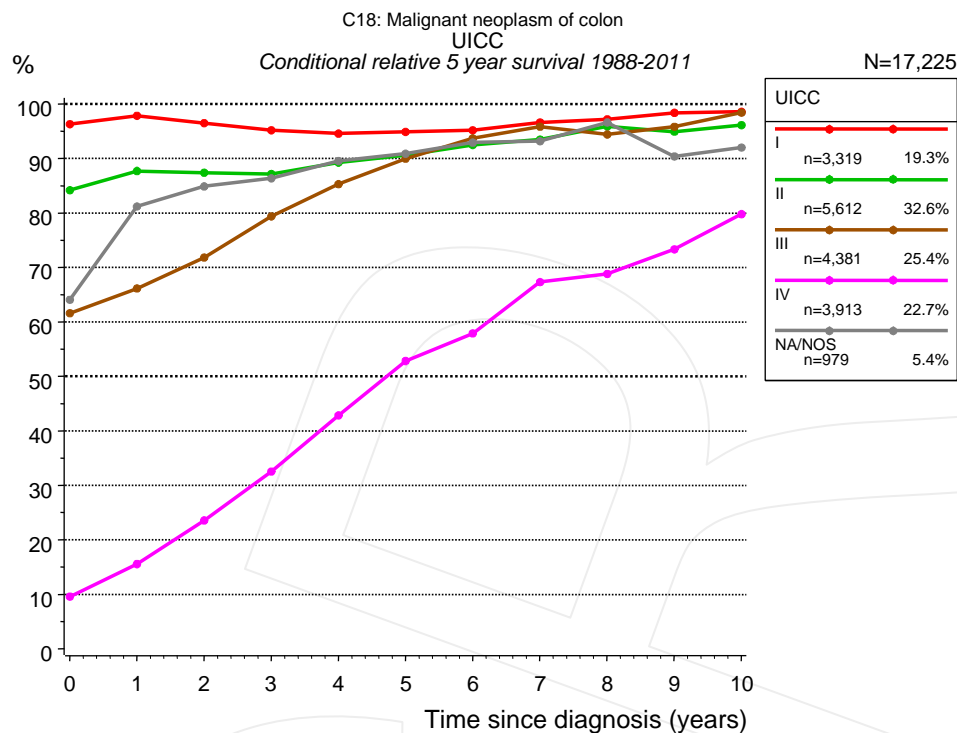


Figure 4e. Conditional relative 5-year survival of patients with colon cancer by UICC. For 17,316 of 18,204 cases diagnosed between 1988 and 2011 valid data could be obtained for this item. For a total of 17,225 cases an evaluable classification was established. The grey line represents the subgroup of 979 patients with missing values regarding UICC (5.4% of 18,204 patients, the percent values of all other categories are related to n=17,225).

UICC										
Years	I		II		III		IV		NA/NOS	
	n	Cond. surv. % 5 yrs	n	Cond. surv. % 5 yrs	n	Cond. surv. % 5 yrs	n	Cond. surv. % 5 yrs	n	Cond. surv. % 5 yrs
0	3,319	96.3	5,612	84.2	4,381	61.6	3,913	9.6	979	64.1
1	2,965	97.8	4,812	87.7	3,574	66.1	1,797	15.6	687	81.2
2	2,635	96.5	4,211	87.4	2,843	71.8	882	23.6	606	84.9
3	2,315	95.2	3,603	87.2	2,240	79.4	478	32.5	538	86.4
4	1,979	94.6	3,030	89.2	1,778	85.3	287	42.8	473	89.5
5	1,688	94.9	2,540	90.6	1,393	90.0	174	52.8	422	90.9
6	1,421	95.2	2,107	92.5	1,137	93.7	125	57.9	378	92.9
7	1,205	96.6	1,789	93.5	963	95.9	85	67.3	346	93.2
8	1,048	97.2	1,523	95.9	823	94.4	61	68.8	300	96.6
9	874	98.4	1,317	94.9	707	95.8	49	73.3	269	90.4
10	726	98.6	1,093	96.1	589	98.4	39	79.8	233	92.0

Table 4f. Conditional relative 5-year survival of patients with colon cancer by UICC for period 1988-2011 (N=17,225).

Conditional relative survival rates refer to the relative survival probability, in this case for 5 years after cancer diagnosis, compared to the age- and sex-matched population (=100%) under the condition of being alive for a certain time period (x-axis in Figure 4c). The results illustrate to what extent the cancer induced mortality of particular subgroups declines in the subsequent years after detection of the malignancy. For instance, according to the presented survival statistics, patients in the subgroup UICC="I", who are alive at least 3 years after cancer diagnosis, the conditional relative 5-year survival rate is 95.2% (n=2,315).

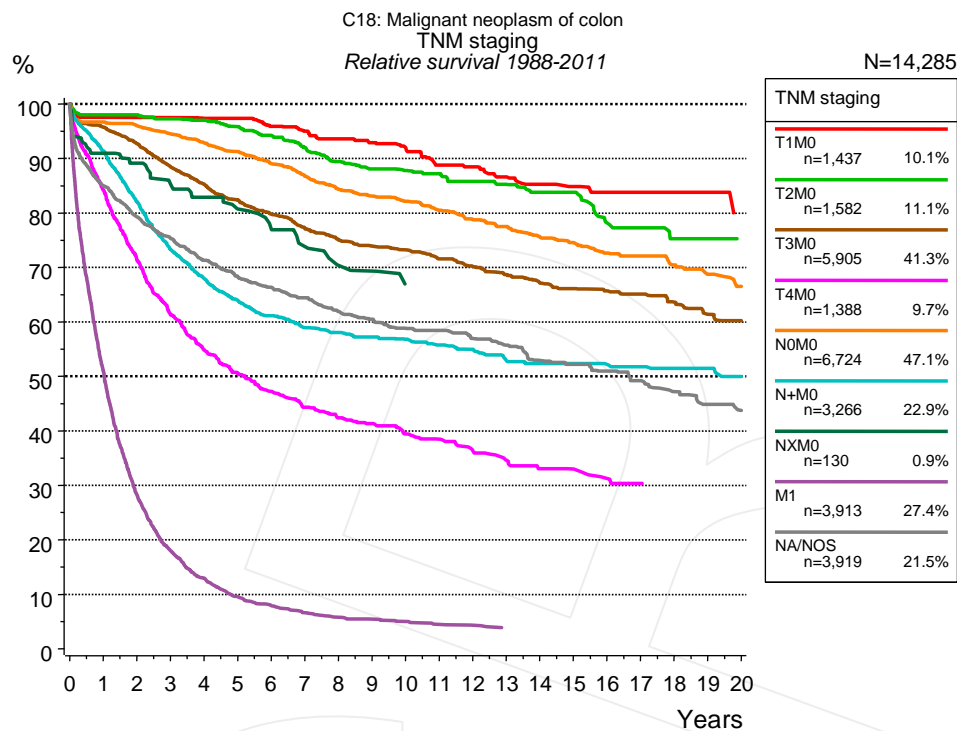


Figure 4g. Relative survival of patients with colon cancer by TNM staging. For 17,316 of 18,204 cases diagnosed between 1988 and 2011 valid data could be obtained for this item. For a total of 14,285 cases an evaluable classification was established. The accumulated percentage exceeds the 100% value because patients are potentially considered in more than one subgroup. The grey line represents the subgroup of 3,919 patients with missing values regarding TNM staging (21.5% of 18,204 patients, the percent values of all other categories are related to n=14,285).

Years	TNM staging													
	T1M0		T2M0		T3M0		T4M0		N0M0		N+M0		NXM0	
	n=1,437		n=1,582		n=5,905		n=1,388		n=6,724		n=3,266		n=130	
	obs. %	rel. %	obs. %	rel. %	obs. %	rel. %	obs. %	rel. %	obs. %	rel. %	obs. %	rel. %	obs. %	rel. %
0	100.0	100.0	100.0	100.0	100.0	100.0	100.0	100.0	100.0	100.0	100.0	100.0	100.0	100.0
1	94.9	97.5	94.7	98.0	91.9	95.7	80.3	84.2	93.0	96.6	87.8	91.4	87.7	90.9
2	91.9	97.5	91.4	98.0	85.6	92.7	65.2	71.3	88.9	96.0	76.1	82.1	82.8	89.1
3	89.2	97.5	87.8	97.2	78.6	88.5	53.9	61.3	84.3	94.5	65.7	73.3	76.7	85.3
4	86.2	97.4	84.3	97.0	72.8	85.2	46.3	54.8	79.8	92.9	58.8	68.0	72.3	82.8
5	84.0	97.4	80.3	95.9	67.8	82.4	41.2	50.6	75.6	91.3	53.6	64.0	67.4	80.7
6	79.3	95.9	75.9	94.2	63.1	79.8	37.1	47.2	70.8	89.1	49.5	61.1	62.1	76.9
7	75.9	95.0	71.5	92.0	58.7	77.1	33.6	44.3	66.4	86.8	46.1	59.0	58.6	73.8
8	72.4	93.6	67.0	89.4	55.0	75.1	30.8	42.4	62.1	84.3	43.9	58.1	53.4	70.4
9	69.2	92.9	63.6	88.1	52.1	73.9	29.1	41.3	58.9	83.1	41.9	57.3	51.9	69.3
10	66.0	92.0	61.0	87.8	49.7	73.2	26.7	39.4	56.0	82.1	40.1	56.9	47.2	66.9
11	61.5	88.8	58.6	87.2	46.7	71.6	25.2	38.5	52.8	80.5	38.0	55.8	47.2	66.9
12	59.1	88.4	55.7	85.8	44.1	70.2	22.9	36.3	49.7	78.8	36.3	55.0	47.2	66.9
13	55.7	86.6	52.6	85.2	41.5	68.7	21.0	34.6	47.0	77.5	33.6	52.9	47.2	66.9
14	53.3	85.3	50.1	83.8	39.1	67.1	19.3	33.1	44.1	75.6	32.3	52.4		
15	50.4	84.8	48.3	83.8	37.2	66.1	18.9	33.0	42.0	74.6	31.1	52.4		
16	48.6	83.8	42.7	78.1	35.6	65.7	17.2	31.2	39.3	72.6	29.6	52.2		
17	47.7	83.8	41.1	77.3	34.1	65.1	16.3	30.3	38.0	72.1	28.5	51.8		
18	46.5	83.8	37.7	75.3	31.8	63.6	15.8	28.9	35.2	70.5	27.1	51.5		
19	44.5	83.8	36.6	75.3	29.4	61.4	15.8	27.5	32.9	68.8	26.1	51.5		
20			35.1	75.2	28.0	60.3			30.8	66.6	24.4	50.0		

cont'd Years	TNM staging			
	M1 n=3,913		NA/NOS n=3,919	
	obs. %	rel. %	obs. %	rel. %
0	100.0	100.0	100.0	100.0
1	49.1	50.9	81.0	85.0
2	26.5	28.2	72.4	79.3
3	16.5	18.0	65.9	75.3
4	11.5	12.9	59.9	71.3
5	8.3	9.6	55.1	68.3
6	6.7	7.9	51.4	66.4
7	5.4	6.6	48.0	64.4
8	4.6	5.8	44.1	61.9
9	4.2	5.4	41.4	60.5
10	3.8	5.0	38.5	58.8
11	3.3	4.5	36.9	58.4
12	3.0	4.3	34.3	56.9
13	2.6	3.9	32.1	55.7
14	2.6	3.8	29.1	52.9
15	2.6	3.8	27.7	52.2
16			26.0	51.0
17			23.8	49.2
18			21.8	47.2
19			19.8	44.9
20			18.4	43.7

Table 4h. Observed (obs.) and relative (rel.) survival of patients with colon cancer by TNM staging for period 1988-2011 (N=24,345).

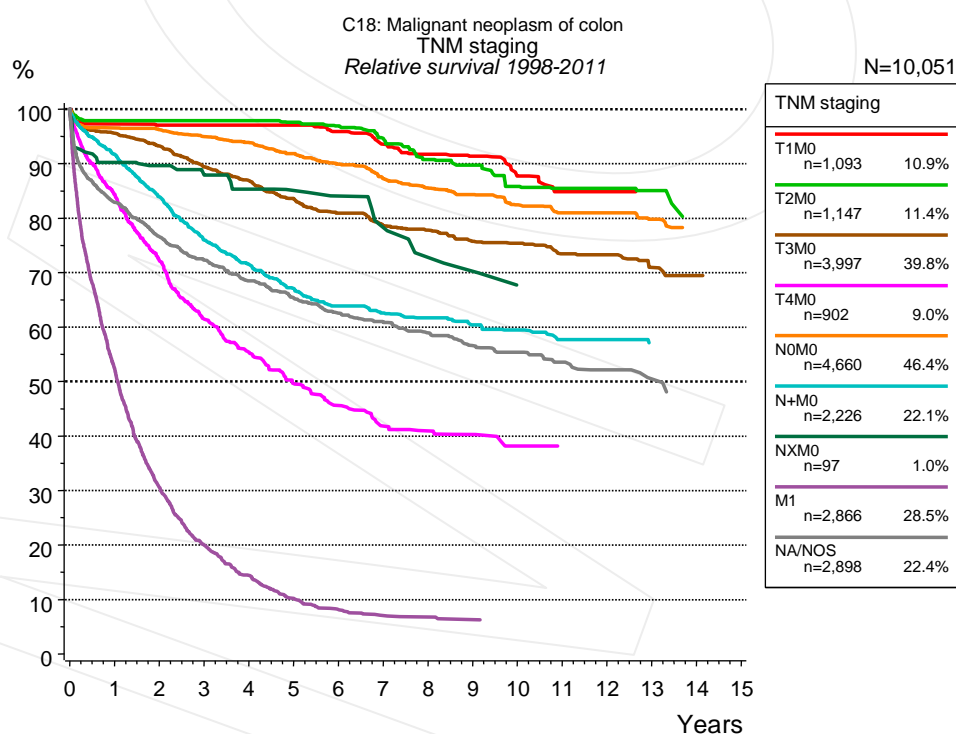


Figure 4i. Relative survival of patients with colon cancer by TNM staging. For 12,433 of 12,949 cases diagnosed between 1998 and 2011 valid data could be obtained for this item. For a total of 10,051 cases an evaluable classification was established. The accumulated percentage exceeds the 100% value because patients are potentially considered in more than one subgroup. The grey line represents the subgroup of 2,898 patients with missing values regarding TNM staging (22.4% of 12,949 patients, the percent values of all other categories are related to n=10,051).

Years	TNM staging													
	T1M0 n=1,093		T2M0 n=1,147		T3M0 n=3,997		T4M0 n=902		N0M0 n=4,660		N+M0 n=2,226		NXM0 n=97	
	obs. %	rel. %	obs. %	rel. %	obs. %	rel. %	obs. %	rel. %	obs. %	rel. %	obs. %	rel. %	obs. %	rel. %
0	100.0	100.0	100.0	100.0	100.0	100.0	100.0	100.0	100.0	100.0	100.0	100.0	100.0	100.0
1	94.7	97.2	94.9	97.9	91.7	95.6	80.5	84.3	93.0	96.6	88.2	91.7	87.6	90.2
2	91.6	97.1	92.2	97.9	86.0	93.2	66.3	72.3	89.2	96.2	77.8	83.9	83.2	89.6
3	89.4	97.1	89.3	97.9	79.3	89.4	54.2	61.5	84.8	95.0	68.0	76.0	79.5	88.0
4	86.7	97.1	85.8	97.9	74.0	86.9	47.2	55.4	80.7	93.9	61.8	71.5	74.5	85.3
5	84.1	97.1	82.1	97.6	68.6	83.6	40.8	49.6	76.2	91.8	56.0	67.1	71.6	85.1
6	79.5	95.9	78.1	96.9	63.7	80.9	36.3	45.6	71.6	89.9	51.6	63.9	68.5	84.1
7	75.0	93.6	73.5	94.6	59.5	78.6	32.3	41.8	66.9	87.2	48.8	62.6	62.8	78.3
8	71.0	91.7	67.7	90.7	56.7	77.8	30.8	41.0	63.1	85.6	46.8	61.7	56.6	72.8
9	68.1	91.4	64.9	89.7	53.0	75.8	29.5	40.3	59.8	84.3	43.9	60.4	54.0	70.3
10	62.9	87.8	59.8	85.8	50.7	75.4	26.9	38.1	56.2	82.4	42.1	59.5		
11	58.9	84.9	57.1	85.4	47.3	73.5	26.1	38.1	52.9	81.0	39.1	57.7		
12	58.0	84.9	56.3	85.4	45.5	73.3	26.1	38.0	51.5	81.0	38.3	57.7		
13			52.2	85.0	41.9	70.9			48.0	79.8	35.8	56.8		
14					40.3	69.5					35.8	52.4		

Years	TNM staging			
	M1 n=2,866		NA/NOS n=2,898	
	obs. %	rel. %	obs. %	rel. %
0	100.0	100.0	100.0	100.0
1	50.5	52.4	78.8	82.9
2	28.8	30.6	69.7	76.6
3	18.3	20.0	63.1	72.2
4	12.9	14.4	57.5	68.5
5	8.9	10.2	52.6	65.4
6	7.0	8.1	48.4	62.6
7	5.9	7.0	45.4	61.0
8	5.6	6.8	42.1	58.9
9	5.2	6.3	38.8	56.6
10			36.7	55.4
11			34.2	53.5
12			32.2	52.2
13			29.5	50.5

Table 4j. Observed (obs.) and relative (rel.) survival of patients with colon cancer by TNM staging for period 1998-2011 (N=16,988).

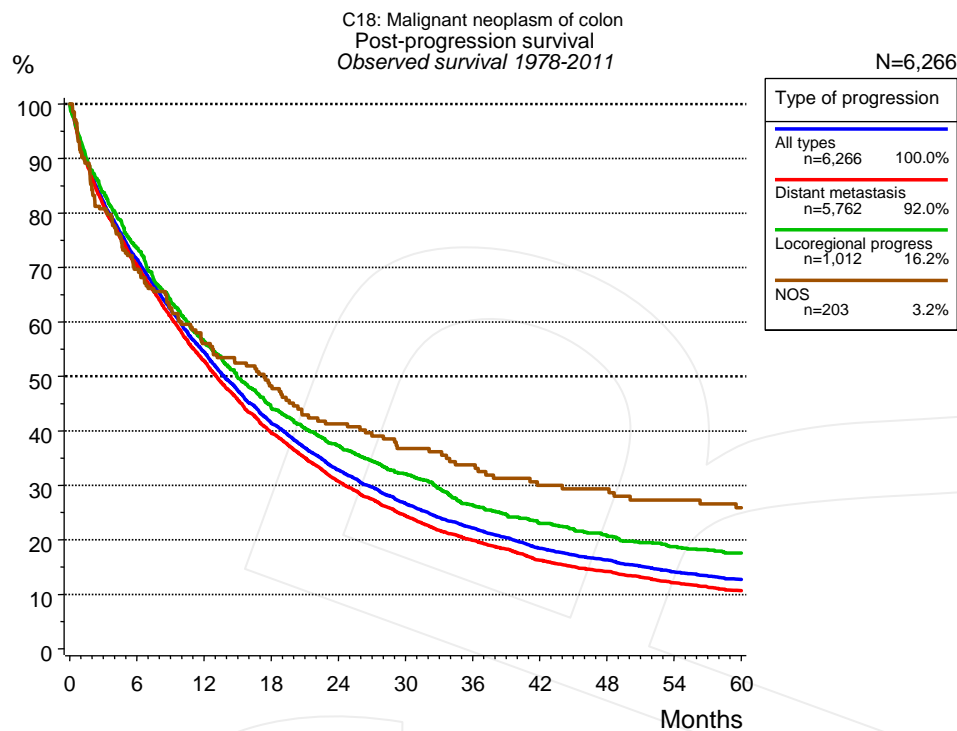


Figure 5a. Observed post-progression survival of 6,266 patients with colon cancer diagnosed between 1978 and 2011 (incl. M1). These 6,266 patients with documented progression events during their course of disease represent 32.0% of the totally 19,588 evaluated cases. Patients with cancer relapse documented via death certificates only were excluded (n=1,451, 7.4%). Multiple progression types on different sites are included in the evaluation even when not occurring synchronously. The NOS (not otherwise specified) class is included under the condition, that it is the one and only progression type during the course of disease.

Medical record documentation often lacks the linguistic severity to distinguish between local relapse, regional lymph node metastasis and distant spread in solid cancers. Frequently, the statement “not specified” is the only information in registries regarding relapse of the disease. The category “All types” denotes all cases who suffered from at least one relapse during the course of disease (incl. primary M1-status). Although, the real number of relapsed patients is likely to be much higher. The accumulated percentage of patients with local relapse or distant metastasis exceeds the 100% value because patients are potentially considered in more than one subgroup.

Months	Type of progression			
	All types n=6,266	Distant metastasis n=5,762	Locoregional progress n=1,012	NOS n=203
	%	%	%	%
0	100.0	100.0	100.0	100.0
12	54.5	52.9	56.4	56.0
24	32.8	30.7	37.3	41.3
36	22.2	19.9	26.4	33.7
48	16.3	14.2	20.7	29.3
60	12.8	10.7	17.5	25.9

Table 5b. Observed post-progression survival of patients with colon cancer for period 1978-2011 (N=6,266).

Shortcuts

AS	Assembled survival chart (observed, expected, relative)
CS	Conditional survival
DCO	Death certificate only. The death certificate provides the only notification to the registry.
MCR	Munich Cancer Registry, Germany (Tumorregister München)
NA	Not available
NCI	National Cancer Institute, USA
NOS	Not otherwise specified
OS	Observed/overall survival (Kaplan-Meier estimate)
PPS	Post-progression survival
RS	Relative Survival. Ratio of observed and expected survival (derived from the normal population)
SEER	Surveillance, Epidemiology, and End Results, USA
TTP	Time to progression Date of entry: Date of diagnosis Event (Progression): First local recurrence, lymph node relapse or distant metastasis, unspecified recurrence First all-cause recurrence is illustrated by survival curves (Kaplan-Meier estimate). First local recurrence, lymph node relapse or distant metastasis are depicted cumulatively, where applicable ("reverse" Kaplan-Meier estimate).
UICC	Union for International Cancer Control, Geneva

Recommended Citation

Munich Cancer Registry. Survival C18: Colon cancer [Internet]. 2013 [updated 2013 Apr 1; cited 2013 May 1]. Available from: http://www.tumorregister-muenchen.de/en/facts/surv/surv_C18__E.pdf

Copyright

The content of the public web site provided by the Munich Cancer Registry is available worldwide and free of charge. All documents are free to download, utilize, copy, print-out and distribute, providing that the MCR is referenced.

Disclaimer

The Munich Cancer Registry reserves the right to not be responsible for the topicality, correctness, completeness or quality of the information provided. Liability claims regarding damage caused by the use of any information provided, including any kind of information which is incomplete or incorrect, will therefore be rejected.

Index of figures and tables

Fig./Tbl.		Page
1a	Relative survival by period of diagnosis (chart)	2
1b	Survival by period of diagnosis (table)	3
2a	Survival by gender (chart)	3
2b	Survival by gender (table)	4
3a	Relative survival by age category (chart)	4
3b	Observed survival by age category (chart)	5
3c	Survival by age category (table)	5
4a	Relative survival by UICC 1988+ (chart)	6
4b	Survival by UICC 1988+ (table)	6
4c	Relative survival by UICC 1998+ (chart)	7
4d	Survival by UICC 1998+ (table)	7
4e	Conditional survival by UICC (chart)	8
4f	Conditional survival by UICC (table)	8
4g	Relative survival by TNM staging 1988+ (chart)	9
4h	Survival by TNM staging 1988+ (table)	9
4i	Relative survival by TNM staging 1998+ (chart)	10
4j	Survival by TNM staging 1998+ (table)	11
5a	Observed post-progression survival (chart)	12
5b	Observed post-progression survival (table)	12