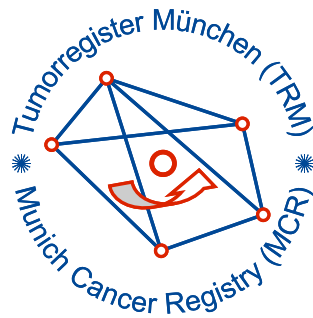


Munich Cancer Registry



- ▶ Baseline statistics
- ▶ Selection Matrix
- ▶ Homepage

Munich Cancer Registry at Munich Cancer Center
Marchioninstr. 15
Munich, 81377
Germany

<http://www.tumorregister-muenchen.de/en>

Cancer statistics: Survival

C38, C47-C49: Sarcoma

Year of diagnosis	1978-1987	1988-1997	1998-2011
Patients	311	607	2,542
Diseases	312	607	2,550
Creation date	04/01/2013		
Export date	01/03/2013		
Population	4.5 m		



http://www.tumorregister-muenchen.de/en/facts/surv/surv_C3849E.pdf

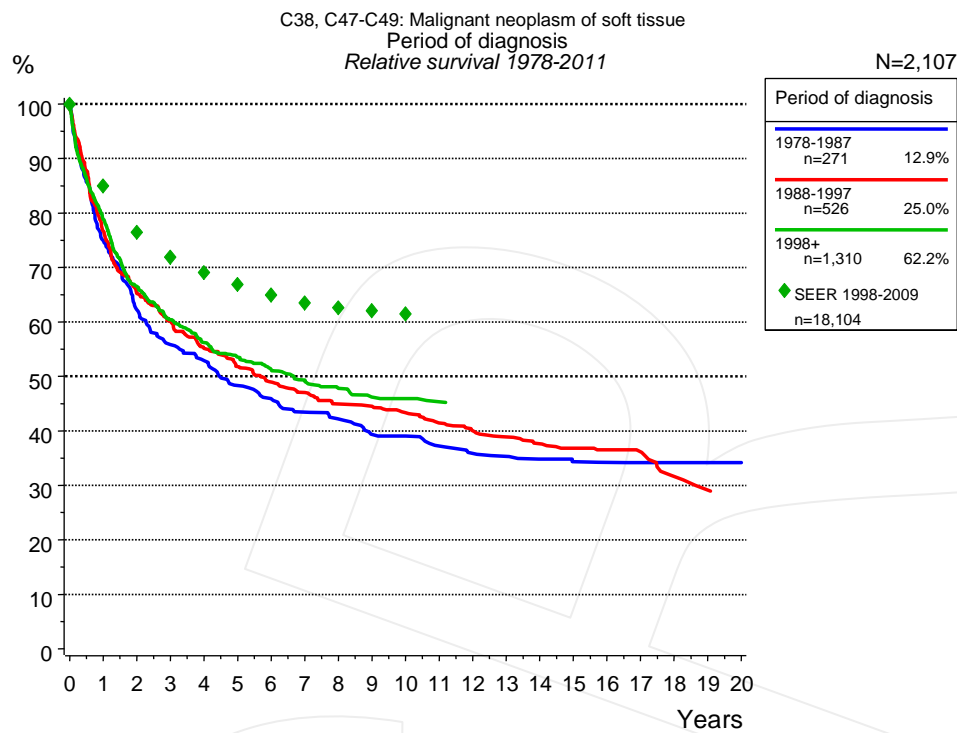


Figure 1a. Relative survival of patients with sarcoma by period of diagnosis. Included in the evaluation are 2,107 cases diagnosed between 1978 and 2011.

The survival results of the SEER program (Surveillance, Epidemiology, and End Results) of the American National Cancer Institute (NCI) are summarized as the period of diagnosis from 1998 to 2009, and are represented by green diamonds in order to facilitate comparisons between MCR and SEER.

The presented survival curves are derived from clinical records with valid follow-up informations, which means that death certificate cases (DCO) cases are omitted from the analysis. With this one restriction, the MCR has provided population-based statistics since 1998, collecting data on all cancer cases in the region of southern Bavaria. Historical data of previous time periods can be heavily selected, therefore, univariate survival comparisons of the presented time periods must be carefully considered. Nonetheless, all calculable survival curves are depicted to facilitate the comparison of long time follow-up analyses of relative survival between particular cancers.

Years	Period of diagnosis					
	1978-1987		1988-1997		1998+	
	n=271		n=526		n=1,310	
	obs. %	rel. %	obs. %	rel. %	obs. %	rel. %
0	100.0	100.0	100.0	100.0	100.0	100.0
1	73.8	74.9	74.9	76.6	77.0	78.8
2	60.1	62.2	62.6	65.2	63.8	66.5
3	53.0	55.8	56.7	60.0	56.9	60.4
4	49.7	52.9	51.1	55.1	52.2	56.2
5	44.5	48.3	47.1	51.8	48.7	53.5
6	41.5	45.9	43.8	49.0	46.0	51.2
7	38.9	43.4	41.4	47.1	43.6	49.3
8	37.0	42.2	38.8	44.9	41.4	47.8
9	34.0	39.3	37.9	44.5	39.4	46.2
10	33.6	39.1	36.0	43.3	39.0	45.9
11	31.3	37.2	33.9	41.5	37.9	45.4
12	29.8	35.9	32.2	40.0		
13	29.0	35.3	30.8	38.9		
14	27.8	34.8	29.4	37.6		
15	27.0	34.3	28.2	36.8		
16	26.7	34.2	27.5	36.5		
17	26.3	34.2	27.0	36.1		
18	25.9	34.2	23.0	31.6		
19	25.9	34.2	21.4	29.1		
20	25.5	34.2				

Table 1b. Observed (obs.) and relative (rel.) survival of patients with sarcoma by period of diagnosis for period 1978-2011 (N=2,107).

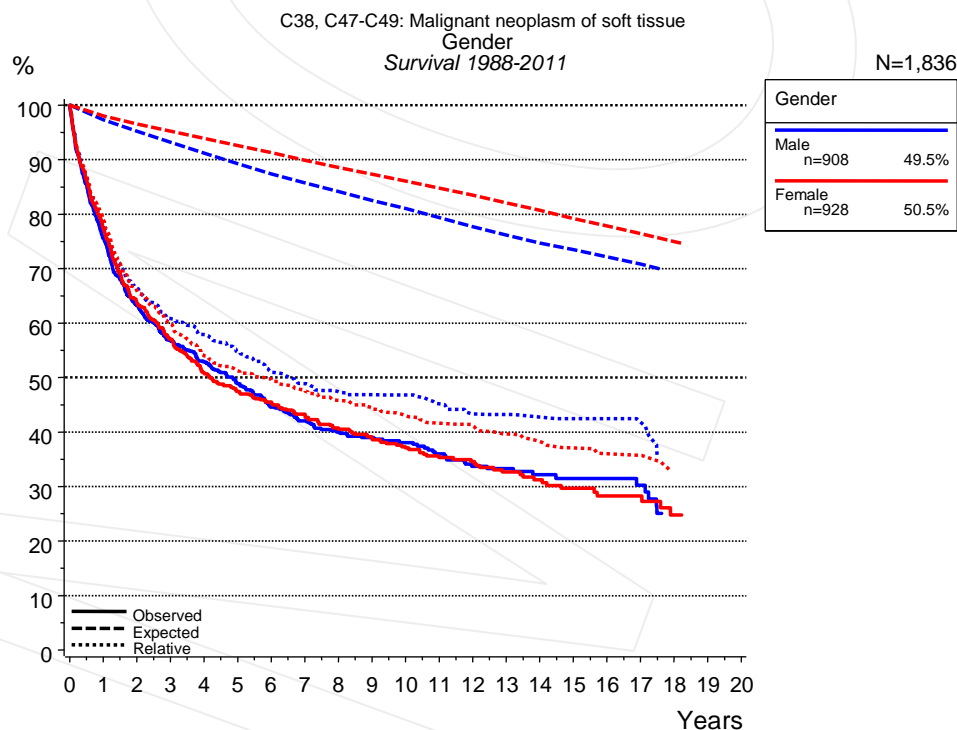


Figure 2a. Survival of patients with sarcoma by gender. Included in the evaluation are 1,836 cases diagnosed between 1988 and 2011.

Years	Gender			
	Male n=908		Female n=928	
	obs. %	rel. %	obs. %	rel. %
0	100.0	100.0	100.0	100.0
1	75.6	77.6	77.2	78.8
2	63.2	66.4	63.7	65.9
3	56.7	60.8	57.0	59.8
4	52.8	57.9	50.8	54.0
5	48.8	54.7	47.5	51.2
6	44.6	51.0	45.5	49.7
7	42.1	48.9	43.3	47.7
8	40.0	47.4	40.5	45.8
9	39.0	46.9	38.8	44.3
10	38.1	46.8	37.0	43.0
11	36.0	45.2	35.3	41.6
12	33.7	43.3	34.6	41.2
13	33.3	43.2	32.6	39.6
14	32.2	42.7	31.2	38.2
15	31.5	42.5	29.6	37.1
16	31.5	42.5	28.2	36.0
17	30.3	41.8	28.2	35.7
18	25.1	34.9	24.8	32.3

Table 2b. Observed (obs.) and relative (rel.) survival of patients with sarcoma by gender for period 1988-2011 (N=1,836).

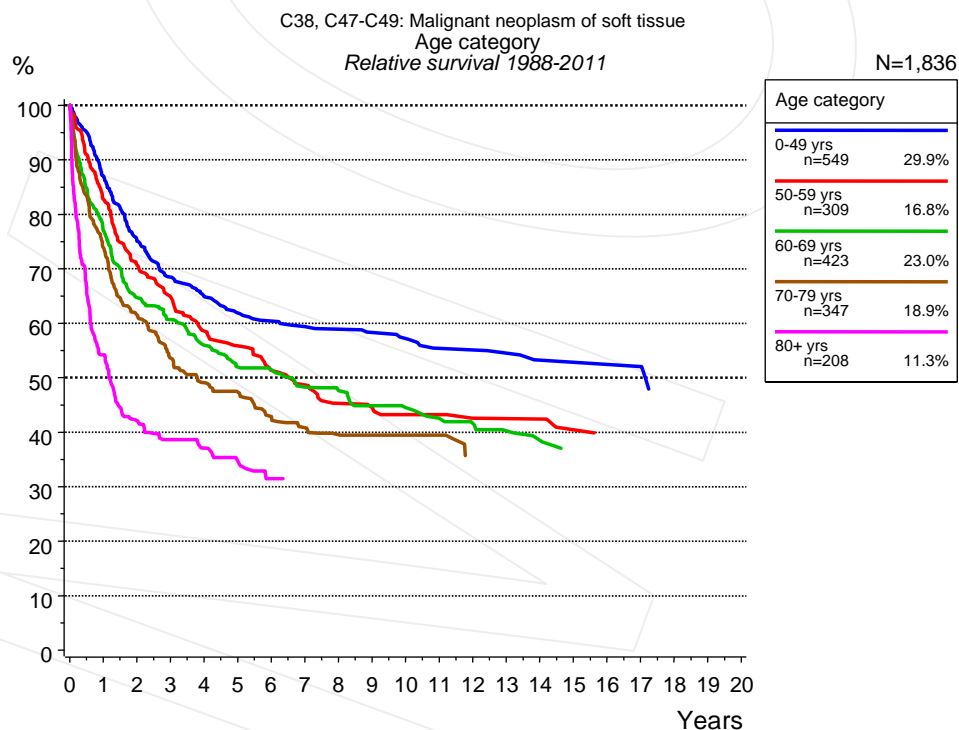


Figure 3a. Relative survival of patients with sarcoma by age category. Included in the evaluation are 1,836 cases diagnosed between 1988 and 2011.

Years	Age category									
	0-49 yrs n=549		50-59 yrs n=309		60-69 yrs n=423		70-79 yrs n=347		80+ yrs n=208	
	obs. %	rel. %	obs. %	rel. %	obs. %	rel. %	obs. %	rel. %	obs. %	rel. %
0	100.0	100.0	100.0	100.0	100.0	100.0	100.0	100.0	100.0	100.0
1	86.8	87.0	82.3	82.7	76.0	76.9	71.4	73.8	48.9	54.2
2	74.9	75.1	70.0	70.7	62.9	64.7	57.3	61.5	34.0	42.1
3	68.3	68.4	63.7	64.8	58.2	60.7	47.9	53.6	27.9	38.6
4	64.7	64.8	57.2	58.6	52.6	56.0	42.0	49.1	23.0	37.1
5	61.5	61.9	54.1	55.8	48.1	52.0	38.5	47.4	18.5	34.7
6	60.1	60.4	49.2	51.3	46.8	51.5	33.2	42.9	14.5	31.5
7	59.1	59.4	46.6	48.7	43.1	48.2	29.8	40.8		
8	58.4	58.9	42.7	45.3	41.1	47.6	27.2	39.5		
9	57.5	58.3	42.0	44.5	38.3	44.9	26.5	39.5		
10	56.5	57.2	40.1	43.2	36.3	44.5	25.0	39.5		
11	54.3	55.4	40.1	43.2	33.6	42.5	22.0	39.5		
12	54.3	55.1	38.3	42.6	32.1	41.6	17.6	35.1		
13	53.6	54.5	38.3	42.5	29.8	40.2				
14	51.7	53.2	38.3	42.4	27.7	38.4				
15	51.7	52.8	35.6	40.4	25.1	37.1				
16	51.7	52.4	34.0	39.3	25.1	37.1				
17	51.7	52.0			25.1	37.1				

Table 3b. Observed (obs.) and relative (rel.) survival of patients with sarcoma by age category for period 1988-2011 (N=1,836).

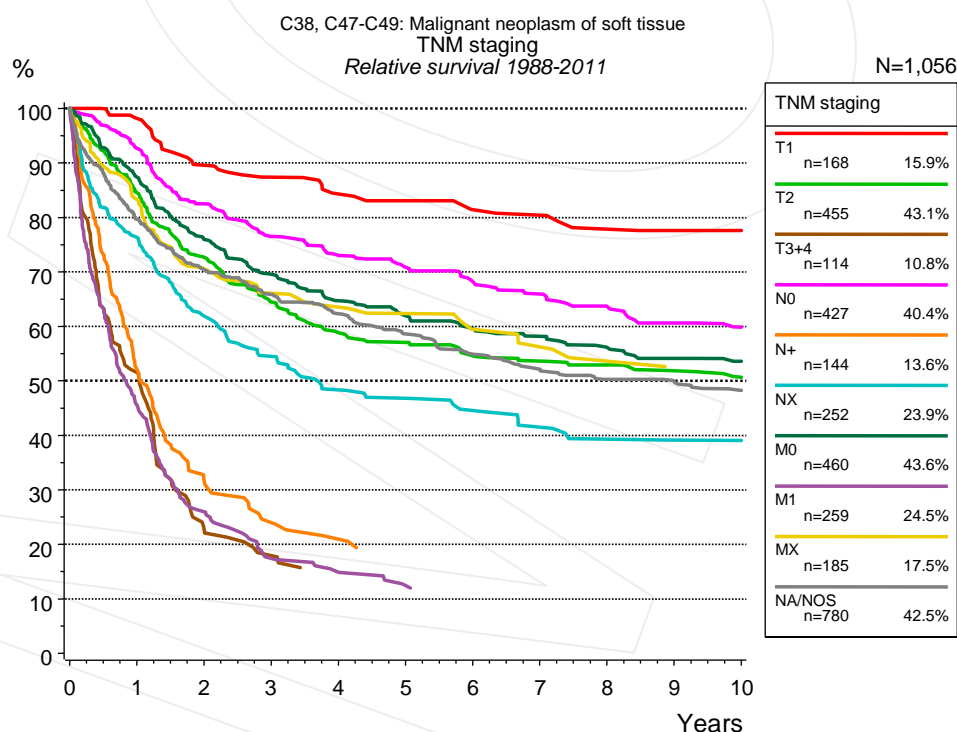


Figure 4a. Relative survival of patients with sarcoma by TNM staging. For 1,056 of 1,836 cases diagnosed between 1988 and 2011 valid data could be obtained for this item. The accumulated percentage exceeds the 100% value because patients are potentially considered in more than one subgroup. The grey line represents the subgroup of 780 patients with missing values regarding TNM staging (42.5% of 1,836 patients, the percent values of all other categories are related to n=1,056).

TNM staging														
Years	T1 n=168		T2 n=455		T3+4 n=114		N0 n=427		N+ n=144		NX n=252		M0 n=460	
	obs. %	rel. %	obs. %	rel. %	obs. %	rel. %	obs. %	rel. %	obs. %	rel. %	obs. %	rel. %	obs. %	rel. %
0	100.0	100.0	100.0	100.0	100.0	100.0	100.0	100.0	100.0	100.0	100.0	100.0	100.0	100.0
1	96.3	98.2	83.0	84.5	50.8	51.5	91.2	92.7	52.0	52.1	74.3	76.3	86.0	87.4
2	86.6	89.6	70.2	72.7	22.0	22.6	80.1	82.5	31.2	31.5	59.0	61.9	73.6	76.0
3	83.0	87.4	61.3	64.5	17.2	17.9	73.0	76.5	24.0	23.9	51.0	54.5	66.3	69.5
4	79.0	84.3	55.3	58.9			68.9	73.0	20.9	20.9	44.5	48.3	60.8	64.7
5	77.1	83.1	52.8	57.0			65.7	70.8			42.5	46.8	57.3	61.9
6	74.0	81.4	49.8	54.6			62.5	68.2			39.4	44.6	54.5	59.6
7	72.9	80.4	48.2	53.6			59.6	65.9			36.1	41.5	52.3	58.2
8	69.4	77.8	46.9	52.9			56.4	63.6			33.4	39.3	49.5	56.1
9	67.9	77.6	44.9	51.8			53.3	60.6			32.3	39.2	47.3	54.2
10	67.9	77.6	43.3	50.7			51.5	59.8			32.3	39.1	45.8	53.6

TNM staging						
<i>cont'd</i>	M1 n=259		MX n=185		NA/NOS n=780	
Years	obs. %	rel. %	obs. %	rel. %	obs. %	rel. %
0	100.0	100.0	100.0	100.0	100.0	100.0
1	44.9	45.5	81.4	83.3	77.5	79.6
2	25.5	26.0	67.6	70.5	67.0	70.4
3	17.0	17.4	62.4	66.1	61.6	65.9
4	14.8	14.8	59.4	63.5	57.1	62.3
5	12.0	12.4	57.5	62.4	52.6	58.6
6	11.3	11.4	53.4	59.5	48.5	54.9
7			50.5	56.2	45.5	52.1
8			47.5	53.6	42.6	50.2
9			45.2	52.5	41.7	49.9
10			45.2	51.4	39.5	48.2

Table 4b. Observed (obs.) and relative (rel.) survival of patients with sarcoma by TNM staging for period 1988-2011 (N=2,464).

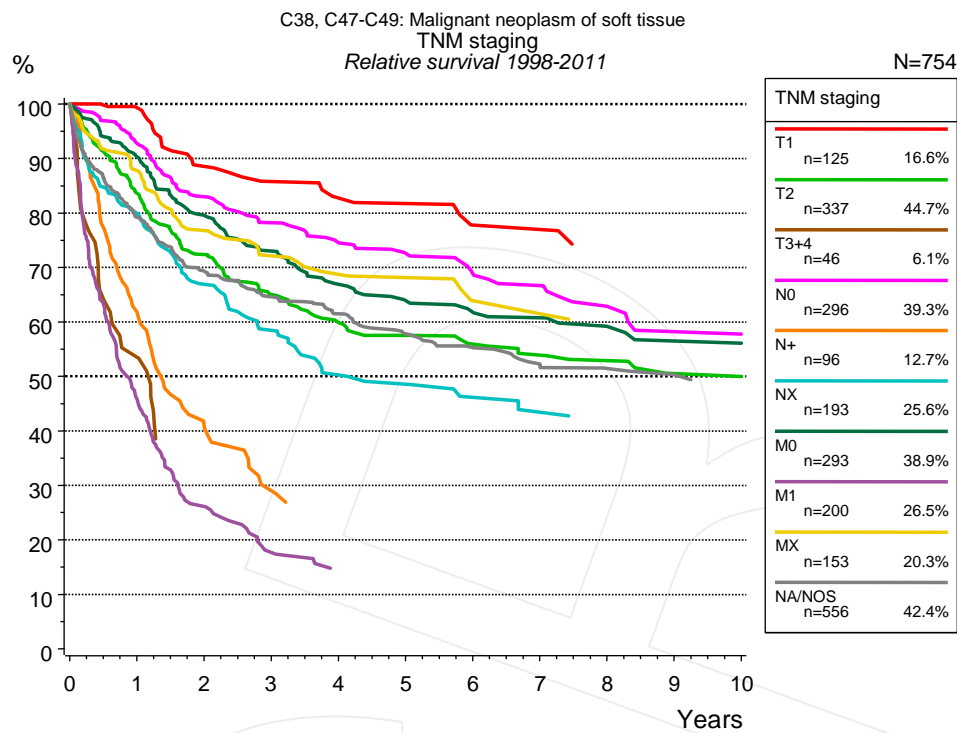


Figure 4c. Relative survival of patients with sarcoma by TNM staging. For 754 of 1,310 cases diagnosed between 1998 and 2011 valid data could be obtained for this item. The accumulated percentage exceeds the 100% value because patients are potentially considered in more than one subgroup. The grey line represents the subgroup of 556 patients with missing values regarding TNM staging (42.4% of 1,310 patients, the percent values of all other categories are related to n=754).

TNM staging														
	T1 n=125		T2 n=337		T3+4 n=46		N0 n=296		N+ n=96		NX n=193		M0 n=293	
Years	obs. %	rel. %	obs. %	rel. %	obs. %	rel. %	obs. %	rel. %	obs. %	rel. %	obs. %	rel. %	obs. %	rel. %
0	100.0	100.0	100.0	100.0	100.0	100.0	100.0	100.0	100.0	100.0	100.0	100.0	100.0	100.0
1	97.5	99.3	82.1	83.6	54.2	53.5	91.3	92.7	62.2	61.9	77.9	79.9	88.9	90.3
2	85.8	88.6	70.0	72.4			80.7	83.0	41.0	41.2	63.8	66.9	77.2	79.6
3	81.6	85.8	61.7	65.1			75.0	78.2	29.4	29.0	54.9	58.4	70.1	73.0
4	77.9	82.8	56.3	59.9			70.8	74.5			46.5	50.2	63.1	66.9
5	76.6	81.7	53.3	57.6			67.7	72.6			44.5	48.5	59.4	63.9
6	71.1	77.8	50.7	55.9			63.8	68.8			40.8	46.1	57.2	61.8
7	71.1	77.0	48.5	53.9			61.3	66.7			38.1	43.4	55.6	60.7
8			46.8	52.9			56.2	62.9			36.5	42.2	52.7	59.2
9			43.5	50.6			52.0	58.2					50.1	56.5
10			43.5	50.0			52.0	57.8					50.1	56.1

cont'd	TNM staging					
	M1 n=200		MX n=153		NA/NOS n=556	
	obs. %	rel. %	obs. %	rel. %	obs. %	rel. %
Years						
0	100.0	100.0	100.0	100.0	100.0	100.0
1	45.4	45.9	86.1	87.8	77.1	79.2
2	25.9	26.1	74.1	76.7	66.0	69.3
3	17.5	17.7	68.4	72.1	60.3	64.6
4	14.1	13.8	64.7	68.7	56.2	61.5
5			63.6	68.1	51.8	57.8
6			57.9	63.9	48.7	55.2
7			55.8	61.5	45.4	52.2
8			53.6	59.1	43.6	51.5
9					41.8	50.4

Table 4d. Observed (obs.) and relative (rel.) survival of patients with sarcoma by TNM staging for period 1998-2011 (N=1,739).

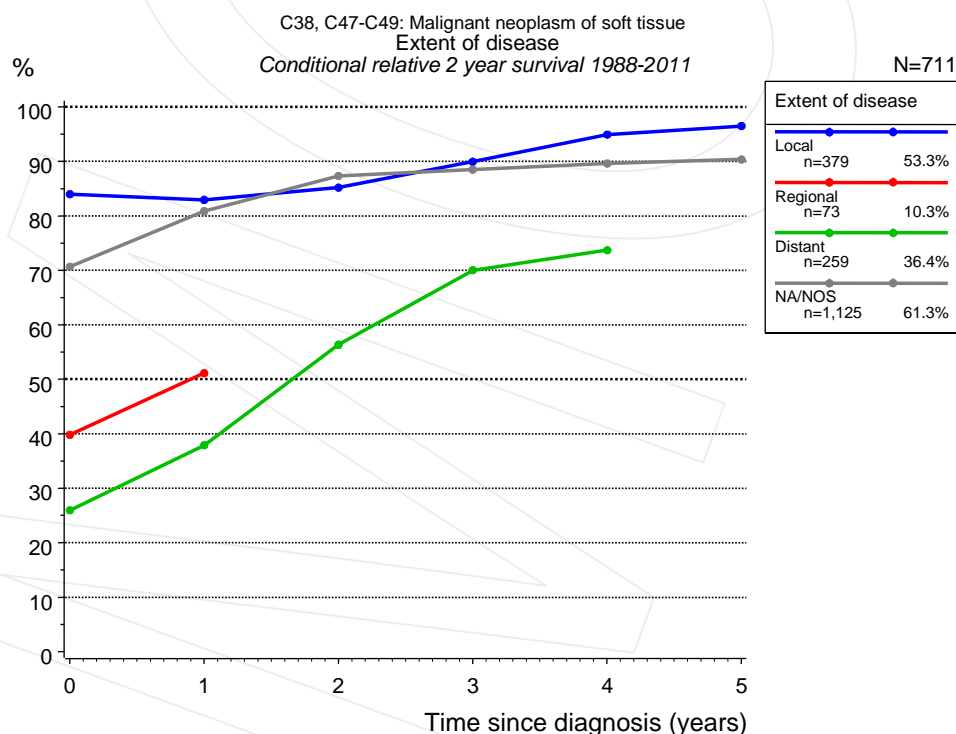


Figure 4e. Conditional relative 2-year survival of patients with sarcoma by extent of disease. For 1,056 of 1,836 cases diagnosed between 1988 and 2011 valid data could be obtained for this item. For a total of 711 cases an evaluable classification was established. The grey line represents the subgroup of 1,125 patients with missing values regarding extent of disease (61.3% of 1,836 patients, the percent values of all other categories are related to n=711).

Years	Extent of disease							
	Local		Regional		Distant		NA/NOS	
	n	Cond. surv. % 2 yrs	n	Cond. surv. % 2 yrs	n	Cond. surv. % 2 yrs	n	Cond. surv. % 2 yrs
0	379	84.0	73	39.8	259	26.0	1,125	70.7
1	333	82.9	39	51.1	108	37.9	861	80.9
2	272	85.2			56	56.3	668	87.3
3	226	89.9			31	70.0	554	88.5
4	192	94.9			24	73.7	450	89.6
5	167	96.5					361	90.3

Table 4f. Conditional relative 2-year survival of patients with sarcoma by extent of disease for period 1988-2011 (N=711).

Conditional relative survival rates refer to the relative survival probability, in this case for 2 years after cancer diagnosis, compared to the age- and sex-matched population (=100%) under the condition of being alive for a certain time period (x-axis in Figure 4c). The results illustrate to what extent the cancer induced mortality of particular subgroups declines in the subsequent years after detection of the malignancy. For instance, according to the presented survival statistics, patients in the subgroup extent of disease="Local", who are alive at least 3 years after cancer diagnosis, the conditional relative 2-year survival rate is 89.9% (n=226).

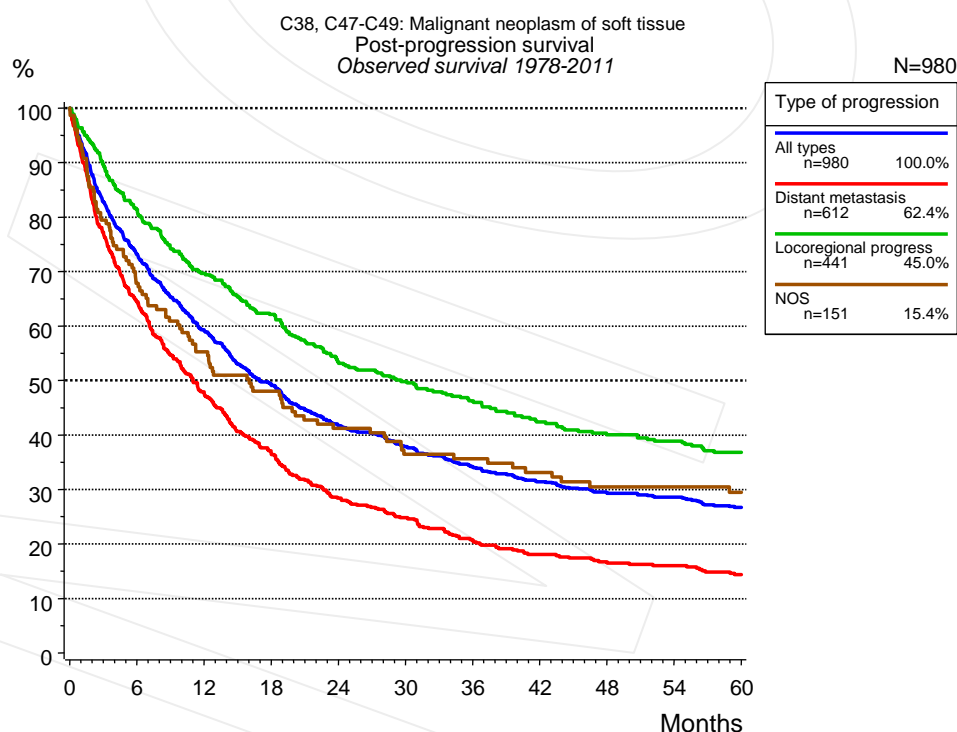


Figure 5a. Observed post-progression survival of 980 patients with sarcoma diagnosed between 1978 and 2011 (incl. M1). These 980 patients with documented progression events during their course of disease represent 46.5% of the totally 2,107 evaluated cases. Patients with cancer relapse documented via death certificates only were excluded (n=208, 9.9%). Multiple progression types on different sites are included in the evaluation even when not occurring synchronously. The

NOS (not otherwise specified) class is included under the condition, that it is the one and only progression type during the course of disease.

Medical record documentation often lacks the linguistic severity to distinguish between local relapse, regional lymph node metastasis and distant spread in solid cancers. Frequently, the statement "not specified" is the only information in registries regarding relapse of the disease. The category "All types" denotes all cases who suffered from at least one relapse during the course of disease (incl. primary M1-status). Although, the real number of relapsed patients is likely to be much higher. The accumulated percentage of patients with local relapse or distant metastasis exceeds the 100% value because patients are potentially considered in more than one subgroup.

Months	Type of progression			NOS n=151 %
	All types n=980 %	Distant metastasis n=612 %	Locoregional progress n=441 %	
0	100.0	100.0	100.0	100.0
12	59.2	47.7	69.6	55.2
24	41.8	28.4	53.4	41.2
36	34.1	20.6	46.3	35.6
48	29.4	16.7	40.1	30.5
60	26.7	14.4	36.8	29.5

Table 5b. Observed post-progression survival of patients with sarcoma for period 1978-2011 (N=980).

Shortcuts

AS	Assembled survival chart (observed, expected, relative)
CS	Conditional survival
DCO	Death certificate only. The death certificate provides the only notification to the registry.
MCR	Munich Cancer Registry, Germany (Tumorregister München)
NA	Not available
NCI	National Cancer Institute, USA
NOS	Not otherwise specified
OS	Observed/overall survival (Kaplan-Meier estimate)
PPS	Post-progression survival
RS	Relative Survival. Ratio of observed and expected survival (derived from the normal population)
SEER	Surveillance, Epidemiology, and End Results, USA
TTP	Time to progression Date of entry: Date of diagnosis Event (Progression): First local recurrence, lymph node relapse or distant metastasis, unspecified recurrence First all-cause recurrence is illustrated by survival curves (Kaplan-Meier estimate). First local recurrence, lymph node relapse or distant metastasis are depicted cumulatively, where applicable ("reverse" Kaplan-Meier estimate).
UICC	Union for International Cancer Control, Geneva

Recommended Citation

Munich Cancer Registry. Survival C38, C47-C49: Sarcoma [Internet]. 2013 [updated 2013 Apr 1; cited 2013 May 1]. Available from: http://www.tumorregister-muenchen.de/en/facts/surv/surv_C3849E.pdf

Copyright

The content of the public web site provided by the Munich Cancer Registry is available worldwide and free of charge. All documents are free to download, utilize, copy, print-out and distribute, providing that the MCR is referenced.

Disclaimer

The Munich Cancer Registry reserves the right to not be responsible for the topicality, correctness, completeness or quality of the information provided. Liability claims regarding damage caused by the use of any information provided, including any kind of information which is incomplete or incorrect, will therefore be rejected.

Index of figures and tables

Fig./Tbl.		Page
1a	Relative survival by period of diagnosis (chart)	2
1b	Survival by period of diagnosis (table)	3
2a	Survival by gender (chart)	3
2b	Survival by gender (table)	4
3a	Relative survival by age category (chart)	4
3b	Survival by age category (table)	5
4a	Relative survival by TNM staging 1988+ (chart)	5
4b	Survival by TNM staging 1988+ (table)	6
4c	Relative survival by TNM staging 1998+ (chart)	7
4d	Survival by TNM staging 1998+ (table)	7
4e	Conditional survival by extent of disease (chart)	8
4f	Conditional survival by extent of disease (table)	9
5a	Observed post-progression survival (chart)	9
5b	Observed post-progression survival (table)	10