

Munich Cancer Registry



- ▶ Baseline statistics
- ▶ Selection Matrix
- ▶ Homepage

Munich Cancer Registry at Munich Cancer Center
Marchioninstr. 15
Munich, 81377
Germany

<http://www.tumorregister-muenchen.de/en>

Cancer statistics: Survival

C45-C49: Mesoth. and soft tissue ca.

Year of diagnosis	1978-1987	1988-1997	1998-2011
Patients	307	700	3,357
Diseases	308	701	3,365
Creation date	04/01/2013		
Export date	01/03/2013		
Population	4.5 m		



http://www.tumorregister-muenchen.de/en/facts/surv/surv_C4549E.pdf

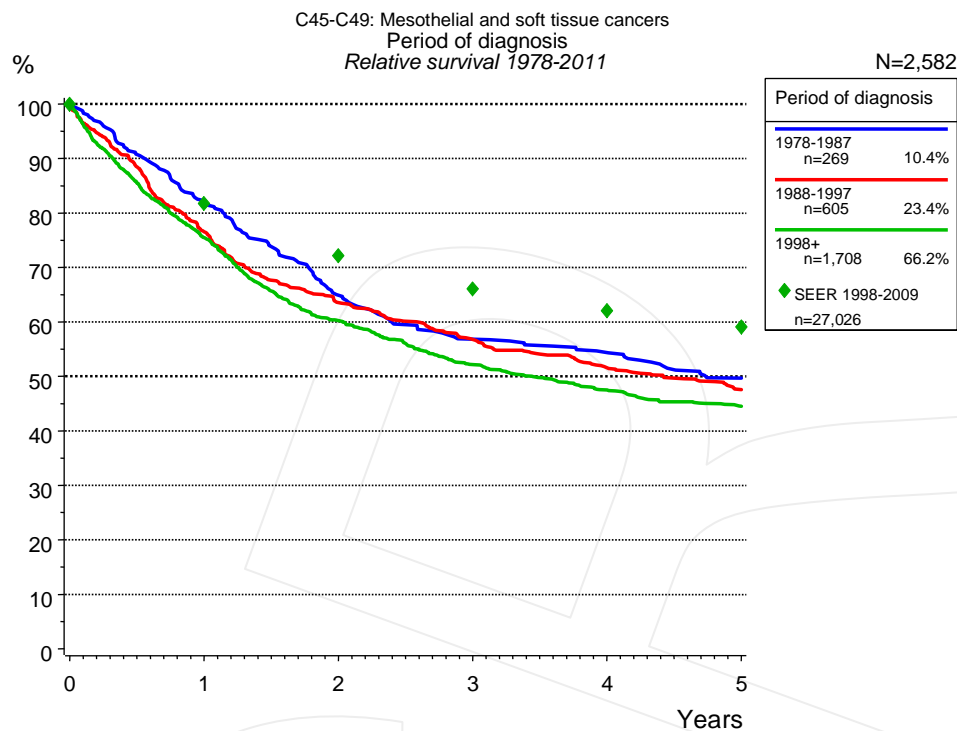


Figure 1a. Relative survival of patients with mesoth. and soft tissue ca. by period of diagnosis. Included in the evaluation are 2,582 cases diagnosed between 1978 and 2011.

The survival results of the SEER program (Surveillance, Epidemiology, and End Results) of the American National Cancer Institute (NCI) are summarized as the period of diagnosis from 1998 to 2009, and are represented by green diamonds in order to facilitate comparisons between MCR and SEER.

The presented survival curves are derived from clinical records with valid follow-up informations, which means that death certificate cases (DCO) cases are omitted from the analysis. With this one restriction, the MCR has provided population-based statistics since 1998, collecting data on all cancer cases in the region of southern Bavaria. Historical data of previous time periods can be heavily selected, therefore, univariate survival comparisons of the presented time periods must be carefully considered. Nonetheless, all calculable survival curves are depicted to facilitate the comparison of long time follow-up analyses of relative survival between particular cancers.

Years	Period of diagnosis					
	1978-1987 n=269		1988-1997 n=605		1998+ n=1,708	
	obs. %	rel. %	obs. %	rel. %	obs. %	rel. %
0	100.0	100.0	100.0	100.0	100.0	100.0
1	81.0	82.2	74.9	76.5	73.6	75.4
2	62.7	64.9	61.1	63.5	57.6	60.2
3	54.2	56.8	53.8	56.8	49.0	52.1
4	51.2	54.4	47.9	51.6	43.9	47.5
5	45.9	49.7	43.5	47.6	40.4	44.5

Table 1b. Observed (obs.) and relative (rel.) survival of patients with mesoth. and soft tissue ca. by period of diagnosis for period 1978-2011 (N=2,582).

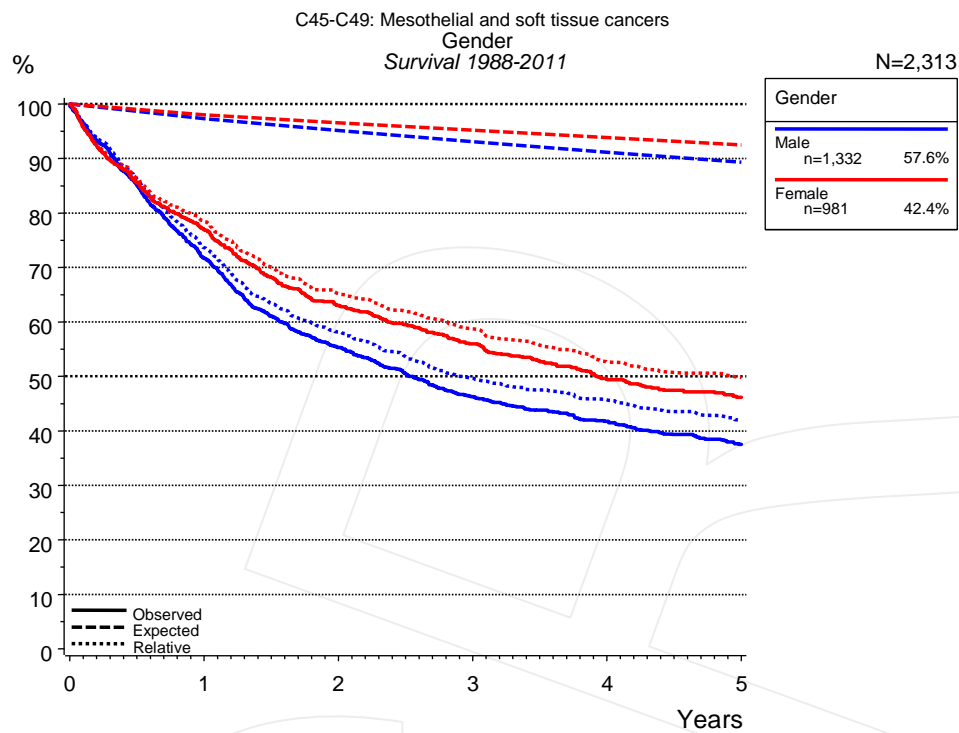


Figure 2a. Survival of patients with mesoth. and soft tissue ca. by gender. Included in the evaluation are 2,313 cases diagnosed between 1988 and 2011.

	Gender			
	Male n=1,332		Female n=981	
Years	obs. %	rel. %	obs. %	rel. %
0	100.0	100.0	100.0	100.0
1	71.7	73.6	76.9	78.5
2	55.3	58.1	63.0	65.2
3	46.3	49.6	56.0	58.7
4	41.8	45.7	49.5	52.6
5	37.5	41.9	46.2	49.8

Table 2b. Observed (obs.) and relative (rel.) survival of patients with mesoth. and soft tissue ca. by gender for period 1988-2011 (N=2,313).

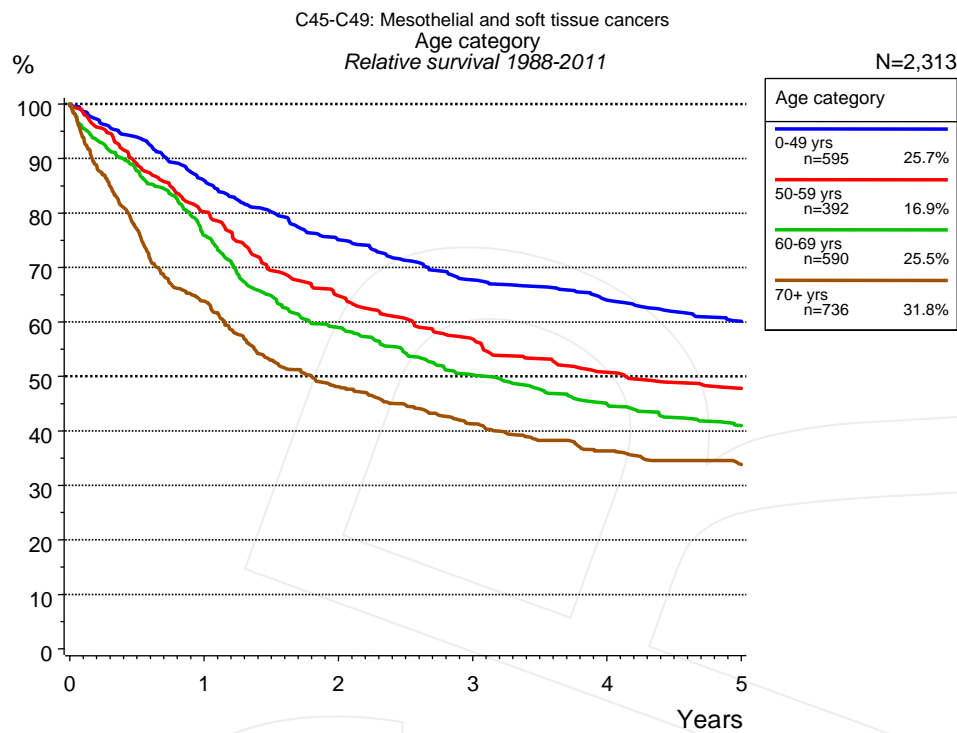


Figure 3a. Relative survival of patients with mesoth. and soft tissue ca. by age category. Included in the evaluation are 2,313 cases diagnosed between 1988 and 2011.

Years	Age category							
	0-49 yrs n=595		50-59 yrs n=392		60-69 yrs n=590		70+ yrs n=736	
	obs. %	rel. %	obs. %	rel. %	obs. %	rel. %	obs. %	rel. %
0	100.0	100.0	100.0	100.0	100.0	100.0	100.0	100.0
1	85.8	86.0	79.8	80.2	74.8	75.9	60.2	63.8
2	74.9	75.1	64.0	64.8	57.3	59.0	42.9	48.1
3	67.5	67.7	55.9	56.8	48.2	50.3	34.6	41.3
4	63.8	64.0	49.5	50.8	42.3	44.9	28.6	36.3
5	59.8	60.1	46.4	47.8	37.8	41.0	24.9	33.8

Table 3b. Observed (obs.) and relative (rel.) survival of patients with mesoth. and soft tissue ca. by age category for period 1988-2011 (N=2,313).

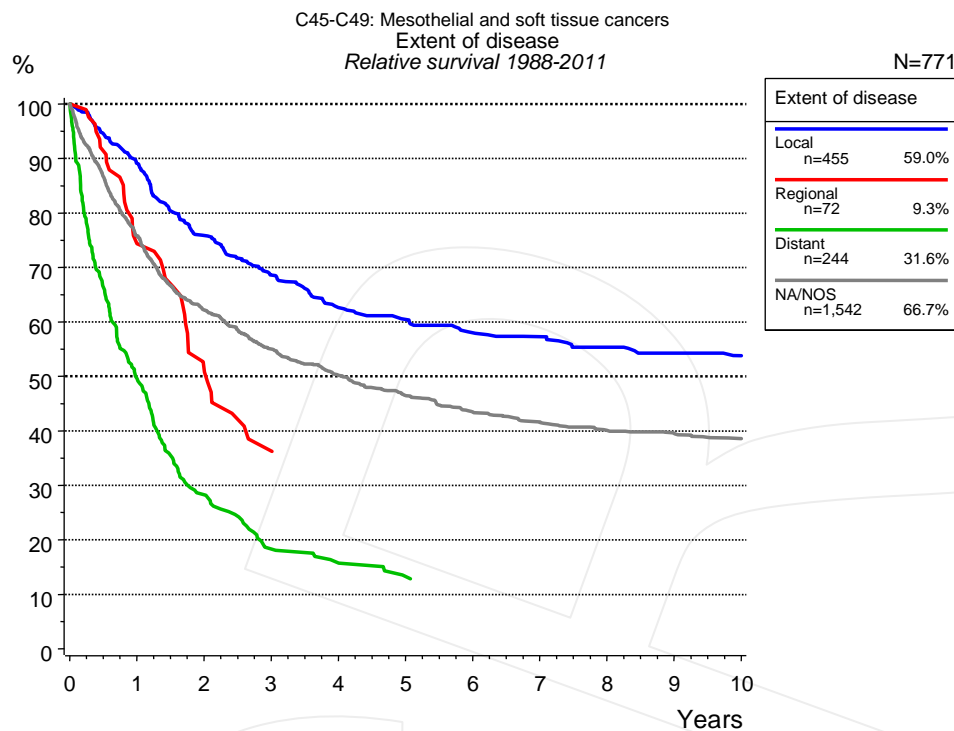


Figure 4a. Relative survival of patients with mesoth. and soft tissue ca. by extent of disease. For 1,153 of 2,313 cases diagnosed between 1988 and 2011 valid data could be obtained for this item. For a total of 771 cases an evaluable classification was established. The grey line represents the subgroup of 1,542 patients with missing values regarding extent of disease (66.7% of 2,313 patients, the percent values of all other categories are related to n=771).

Years	Extent of disease							
	Local n=455		Regional n=72		Distant n=244		NA/NOS n=1,542	
	obs. %	rel. %	obs. %	rel. %	obs. %	rel. %	obs. %	rel. %
0	100.0	100.0	100.0	100.0	100.0	100.0	100.0	100.0
1	87.5	89.1	73.3	74.3	49.0	49.6	73.8	75.8
2	73.3	75.9	51.3	51.5	27.8	28.2	59.3	62.2
3	65.3	68.6	37.2	36.3	17.9	18.3	51.5	55.0
4	58.7	62.7			15.6	15.7	46.1	50.2
5	56.0	60.4			12.8	13.3	41.8	46.5
6	53.0	58.0			12.1	12.2	38.4	43.5
7	51.6	57.3					36.3	41.6
8	49.2	55.4					34.2	40.1
9	47.5	54.3					33.2	39.5
10	46.0	53.8					31.8	38.6

Table 4b. Observed (obs.) and relative (rel.) survival of patients with mesoth. and soft tissue ca. by extent of disease for period 1988-2011 (N=771).

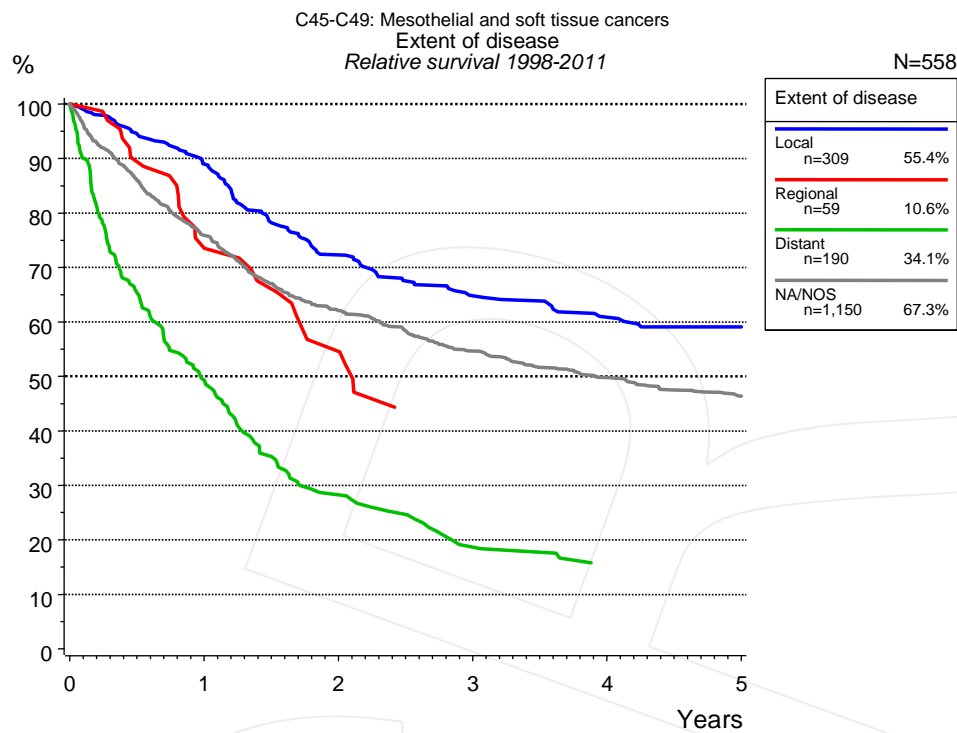


Figure 4c. Relative survival of patients with mesoth. and soft tissue ca. by extent of disease. For 872 of 1,708 cases diagnosed between 1998 and 2011 valid data could be obtained for this item. For a total of 558 cases an evaluable classification was established. The grey line represents the subgroup of 1,150 patients with missing values regarding extent of disease (67.3% of 1,708 patients, the percent values of all other categories are related to n=558).

Years	Extent of disease							
	Local n=309		Regional n=59		Distant n=190		NA/NOS n=1,150	
	obs. %	rel. %	obs. %	rel. %	obs. %	rel. %	obs. %	rel. %
0	100.0	100.0	100.0	100.0	100.0	100.0	100.0	100.0
1	87.4	89.0	72.4	73.5	48.7	49.2	73.9	75.9
2	70.1	72.3	55.3	54.5	27.8	28.3	59.1	62.1
3	61.7	64.8			18.4	18.7	51.0	54.7
4	57.3	60.9			15.0	14.8	45.6	49.8
5	55.2	59.1					41.6	46.4

Table 4d. Observed (obs.) and relative (rel.) survival of patients with mesoth. and soft tissue ca. by extent of disease for period 1998-2011 (N=558).

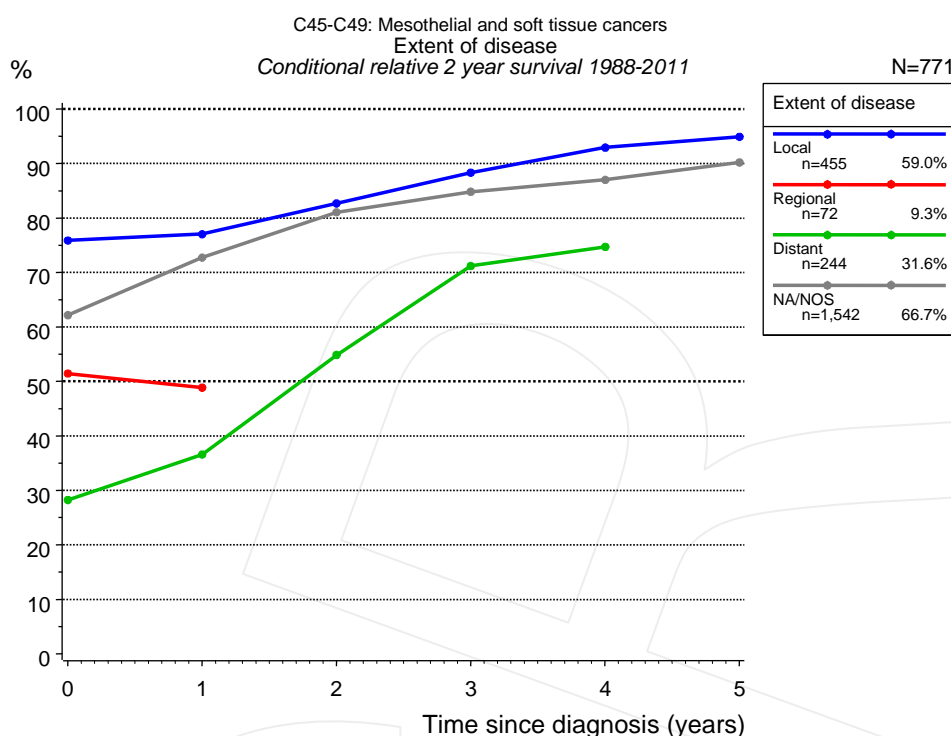


Figure 4e. Conditional relative 2-year survival of patients with mesoth. and soft tissue ca. by extent of disease. For 1,153 of 2,313 cases diagnosed between 1988 and 2011 valid data could be obtained for this item. For a total of 771 cases an evaluable classification was established. The grey line represents the subgroup of 1,542 patients with missing values regarding extent of disease (66.7% of 2,313 patients, the percent values of all other categories are related to n=771).

Years	Extent of disease							
	Local		Regional		Distant		NA/NOS	
	n	Cond. surv. % 2 yrs	n	Cond. surv. % 2 yrs	n	Cond. surv. % 2 yrs	n	Cond. surv. % 2 yrs
0	455	75.9	72	51.5	244	28.2	1,542	62.2
1	381	77.0	47	48.9	110	36.6	1,076	72.7
2	293	82.7			57	54.9	794	81.0
3	239	88.3			32	71.2	625	84.8
4	199	92.9			25	74.7	496	87.0
5	174	94.9					392	90.2

Table 4f. Conditional relative 2-year survival of patients with mesoth. and soft tissue ca. by extent of disease for period 1988-2011 (N=771).

Conditional relative survival rates refer to the relative survival probability, in this case for 2 years after cancer diagnosis, compared to the age- and sex-matched population (=100%) under the condition of being alive for a certain time period (x-axis in Figure 4c). The results illustrate to what extent the cancer induced mortality of particular subgroups declines in the subsequent years after detection of the malignancy. For instance, according to the presented survival statistics, patients in the subgroup extent of disease="Local", who are alive at least 3 years after cancer diagnosis, the conditional relative 2-year survival rate is 88.3% (n=239).

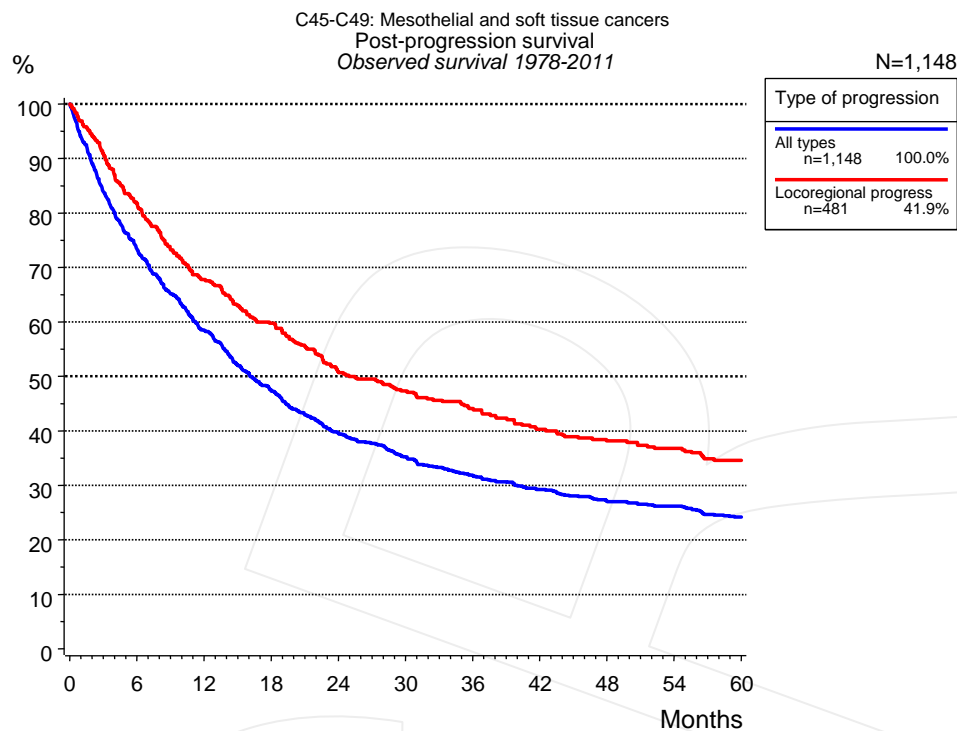


Figure 5a. Observed post-progression survival of 1,148 patients with mesoth. and soft tissue ca. diagnosed between 1978 and 2011 (incl. M1). These 1,148 patients with documented progression events during their course of disease represent 44.5% of the totally 2,582 evaluated cases. Patients with cancer relapse documented via death certificates only were excluded (n=381, 14.8%). Multiple progression types on different sites are included in the evaluation even when not occurring synchronously.

Medical record documentation often lacks the linguistic severity to distinguish between local relapse, regional lymph node metastasis and distant spread in solid cancers. Frequently, the statement “not specified” is the only information in registries regarding relapse of the disease. The category “All types” denotes all cases who suffered from at least one relapse during the course of disease (incl. primary M1-status). Although, the real number of relapsed patients is likely to be much higher. The accumulated percentage of patients with local relapse or distant metastasis exceeds the 100% value because patients are potentially considered in more than one subgroup.

Months	Type of progression	
	All types n=1,148 %	Locoregional progress n=481 %
0	100.0	100.0
12	58.5	67.8
24	39.6	50.9
36	31.8	44.1
48	27.1	38.1
60	24.2	34.6

Table 5b. Observed post-progression survival of patients with mesoth. and soft tissue ca. for period 1978-2011 (N=1,148).

Shortcuts

AS	Assembled survival chart (observed, expected, relative)
CS	Conditional survival
DCO	Death certificate only. The death certificate provides the only notification to the registry.
MCR	Munich Cancer Registry, Germany (Tumorregister München)
NA	Not available
NCI	National Cancer Institute, USA
NOS	Not otherwise specified
OS	Observed/overall survival (Kaplan-Meier estimate)
PPS	Post-progression survival
RS	Relative Survival. Ratio of observed and expected survival (derived from the normal population)
SEER	Surveillance, Epidemiology, and End Results, USA
TTP	Time to progression
	Date of entry: Date of diagnosis
	Event (Progression): First local recurrence, lymph node relapse or distant metastasis, unspecified recurrence
	First all-cause recurrence is illustrated by survival curves (Kaplan-Meier estimate).
	First local recurrence, lymph node relapse or distant metastasis are depicted cumulatively, where applicable ("reverse" Kaplan-Meier estimate).
UICC	Union for International Cancer Control, Geneva

Recommended Citation

Munich Cancer Registry. Survival C45-C49: Mesoth. and soft tissue ca. [Internet]. 2013 [updated 2013 Apr 1; cited 2013 May 1]. Available from: http://www.tumorregister-muenchen.de/en/facts/surv/surv_C4549E.pdf

Copyright

The content of the public web site provided by the Munich Cancer Registry is available worldwide and free of charge. All documents are free to download, utilize, copy, print-out and distribute, providing that the MCR is referenced.

Disclaimer

The Munich Cancer Registry reserves the right to not be responsible for the topicality, correctness, completeness or quality of the information provided. Liability claims regarding damage caused by the use of any information provided, including any kind of information which is incomplete or incorrect, will therefore be rejected.

Index of figures and tables

Fig./Tbl.		Page
1a	Relative survival by period of diagnosis (chart)	2
1b	Survival by period of diagnosis (table)	2
2a	Survival by gender (chart)	3
2b	Survival by gender (table)	3
3a	Relative survival by age category (chart)	4
3b	Survival by age category (table)	4
4a	Relative survival by extent of disease 1988+ (chart)	5
4b	Survival by extent of disease 1988+ (table)	5
4c	Relative survival by extent of disease 1998+ (chart)	6
4d	Survival by extent of disease 1998+ (table)	6
4e	Conditional survival by extent of disease (chart)	7
4f	Conditional survival by extent of disease (table)	7
5a	Observed post-progression survival (chart)	8
5b	Observed post-progression survival (table)	8