

Munich Cancer Registry



- ▶ [Baseline statistics](#)
- ▶ [Selection Matrix](#)
- ▶ [Homepage](#)

Munich Cancer Registry at Munich Cancer Center
Marchioninstr. 15
Munich, 81377
Germany

<http://www.tumorregister-muenchen.de/en>

Cancer statistics: Survival

C51-C58: Fem. genitale cancer

Year of diagnosis	1978-1987	1988-1997	1998-2011
Patients	3,818	5,334	16,663
Diseases	3,859	5,392	16,991
Creation date	04/01/2013		
Export date	01/03/2013		
Population (females)	2.3 m		



http://www.tumorregister-muenchen.de/en/facts/surv/surv_C5158E.pdf

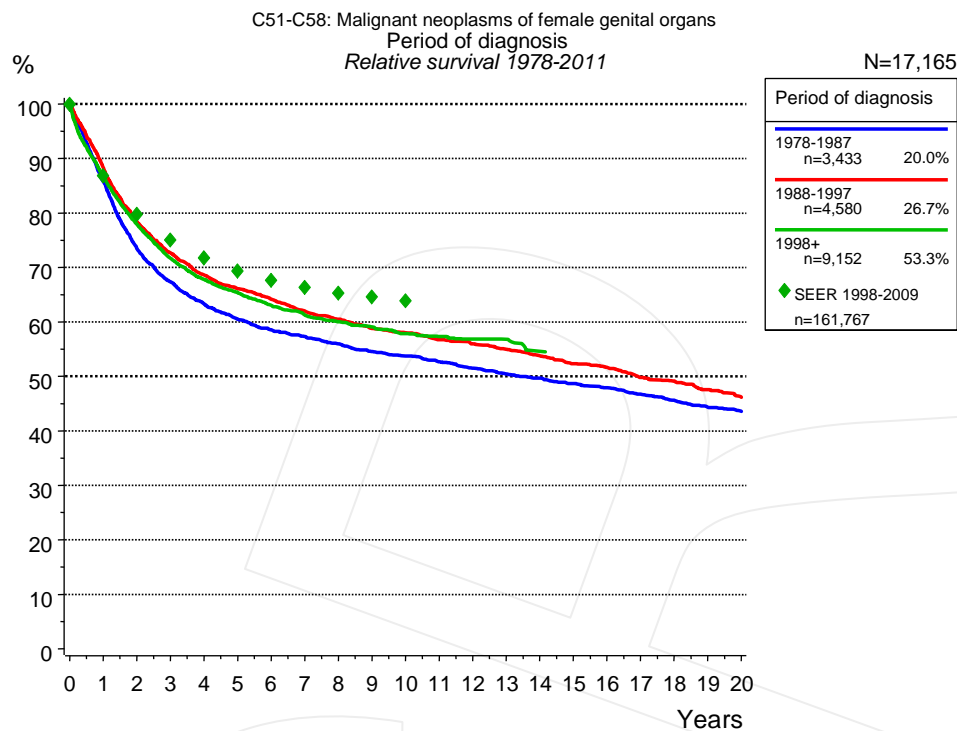


Figure 1a. Relative survival of patients with fem. genitale cancer by period of diagnosis. Included in the evaluation are 17,165 cases diagnosed between 1978 and 2011.

The survival results of the SEER program (Surveillance, Epidemiology, and End Results) of the American National Cancer Institute (NCI) are summarized as the period of diagnosis from 1998 to 2009, and are represented by green diamonds in order to facilitate comparisons between MCR and SEER.

The presented survival curves are derived from clinical records with valid follow-up informations, which means that death certificate cases (DCO) cases are omitted from the analysis. With this one restriction, the MCR has provided population-based statistics since 1998, collecting data on all cancer cases in the region of southern Bavaria. Historical data of previous time periods can be heavily selected, therefore, univariate survival comparisons of the presented time periods must be carefully considered. Nonetheless, all calculable survival curves are depicted to facilitate the comparison of long time follow-up analyses of relative survival between particular cancers.

Years	Period of diagnosis					
	1978-1987		1988-1997		1998+	
	n=3,433		n=4,580		n=9,152	
	obs. %	rel. %	obs. %	rel. %	obs. %	rel. %
0	100.0	100.0	100.0	100.0	100.0	100.0
1	83.9	85.7	86.3	88.3	84.7	86.7
2	70.6	73.4	75.1	78.4	74.7	77.9
3	63.5	67.3	68.1	72.6	67.5	71.7
4	58.5	63.3	63.1	68.6	62.7	67.8
5	55.0	60.5	59.5	66.1	59.4	65.3
6	52.2	58.5	56.6	64.1	56.3	63.0
7	50.1	57.3	53.6	62.0	53.8	61.3
8	48.0	56.0	51.2	60.5	51.8	60.0
9	45.8	54.6	48.7	58.8	49.9	59.1
10	44.2	53.7	47.1	58.0	48.0	57.8
11	42.4	52.7	45.2	56.7	46.6	57.3
12	40.6	51.5	43.6	56.0	45.5	56.8
13	38.9	50.4	41.9	55.0	44.5	56.8
14	37.4	49.7	40.1	53.8	42.3	54.6
15	35.9	48.7	38.2	52.3		
16	34.4	47.9	36.8	51.6		
17	32.8	46.7	34.7	49.8		
18	31.3	45.6	33.5	49.1		
19	29.7	44.3	31.7	47.6		
20	28.5	43.6	29.9	46.1		

Table 1b. Observed (obs.) and relative (rel.) survival of patients with fem. genitale cancer by period of diagnosis for period 1978-2011 (N=17,165).

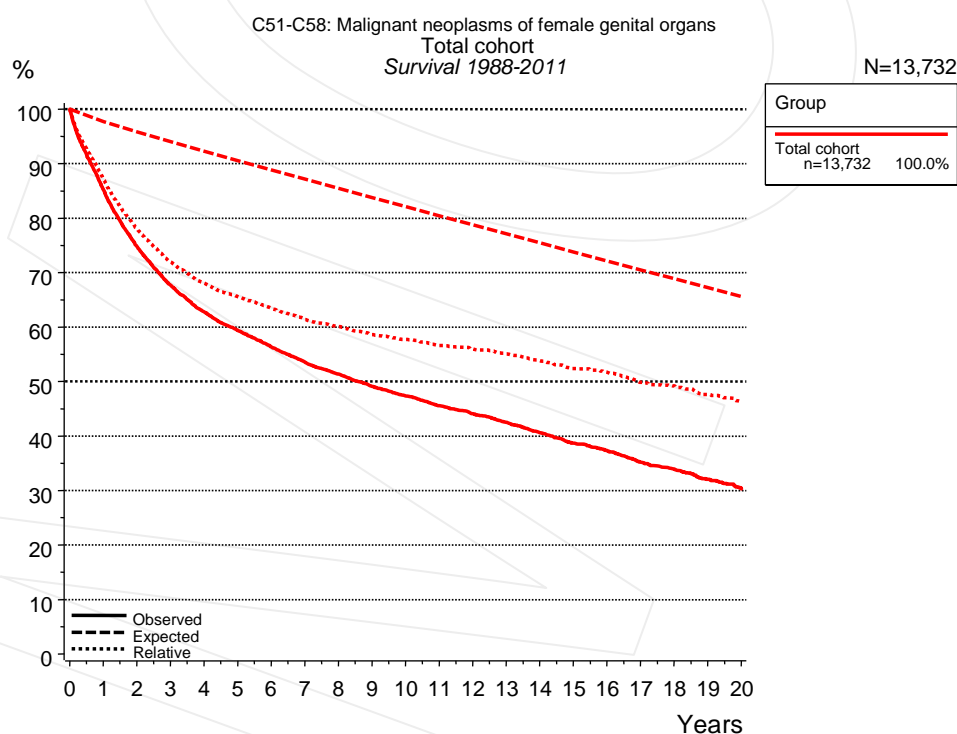


Figure 2a. Observed, expected and relative survival of the total cohort with fem. genitale cancer. Included in the evaluation are 13,732 cases diagnosed between 1988 and 2011.

Years	Group	
	Total cohort n=13,732	
	obs. %	rel. %
0	100.0	100.0
1	85.2	87.2
2	74.8	78.0
3	67.7	72.0
4	62.8	68.0
5	59.4	65.6
6	56.4	63.4
7	53.6	61.5
8	51.4	60.1
9	49.1	58.6
10	47.4	57.7
11	45.6	56.6
12	44.1	55.9
13	42.5	55.1
14	40.6	53.8
15	38.7	52.4
16	37.3	51.7
17	35.2	49.9
18	33.9	49.2
19	32.1	47.6
20	30.3	46.2

Table 2b. Observed (obs.) and relative (rel.) survival of the total cohort with fem. genitale cancer for period 1988-2011 (N=13,732).

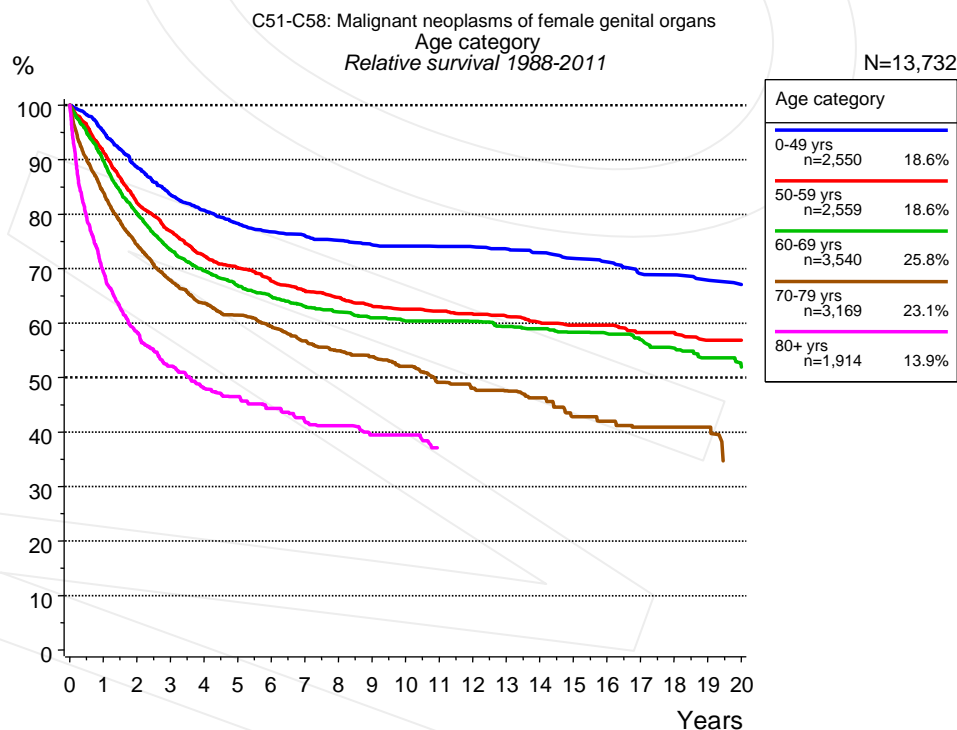


Figure 3a. Relative survival of patients with fem. genitale cancer by age category. Included in the evaluation are 13,732 cases diagnosed between 1988 and 2011.

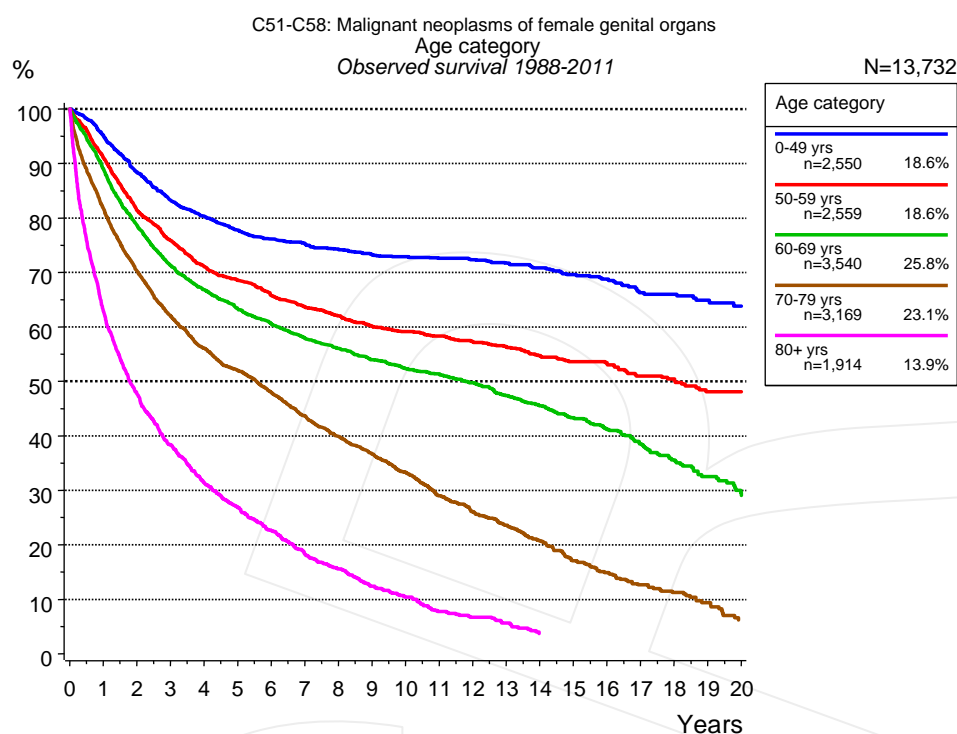


Figure 3b. Observed survival of patients with fem. genitale cancer by age category. Included in the evaluation are 13,732 cases diagnosed between 1988 and 2011.

Years	Age category									
	0-49 yrs n=2,550		50-59 yrs n=2,559		60-69 yrs n=3,540		70-79 yrs n=3,169		80+ yrs n=1,914	
	obs. %	rel. %	obs. %	rel. %	obs. %	rel. %	obs. %	rel. %	obs. %	rel. %
0	100.0	100.0	100.0	100.0	100.0	100.0	100.0	100.0	100.0	100.0
1	95.1	95.2	91.1	91.4	89.0	89.8	81.8	84.0	62.7	69.2
2	88.5	88.7	81.4	82.0	78.7	80.2	70.3	74.4	47.7	58.3
3	83.3	83.6	75.8	76.8	71.2	73.4	62.1	67.9	38.4	52.1
4	80.3	80.7	71.1	72.3	66.8	69.6	56.1	63.6	31.4	48.1
5	77.8	78.3	68.5	70.1	63.3	66.9	52.0	61.4	26.8	46.5
6	76.1	76.7	65.7	67.7	60.6	64.9	48.0	59.4	22.6	44.3
7	75.3	76.0	63.7	65.9	57.9	63.0	43.7	56.7	18.2	41.9
8	74.3	75.2	62.0	64.7	56.0	62.0	39.9	54.9	15.6	41.1
9	73.2	74.3	60.1	63.1	54.0	60.9	36.7	53.8	12.4	39.5
10	72.9	74.1	59.1	62.6	52.3	60.4	33.3	52.1	10.4	39.5
11	72.6	74.1	58.3	62.2	51.4	60.4	29.0	49.1	7.7	37.1
12	72.3	74.0	57.3	61.7	49.7	60.3	26.1	48.0		
13	71.7	73.6	56.3	61.3	47.4	59.4	23.6	47.6		
14	70.8	72.9	54.7	60.1	45.5	59.0	20.7	46.3		
15	69.6	71.8	53.6	59.6	43.3	58.3	17.1	42.8		
16	68.8	71.2	53.2	59.6	41.2	58.0	14.9	42.0		
17	66.3	69.0	51.0	58.3	38.5	56.9	12.7	40.9		
18	66.0	68.8	50.4	58.3	35.6	55.4	11.3	40.9		
19	64.9	67.8	48.1	56.9	32.5	53.6	9.4	40.9		
20	63.8	67.1	48.1	56.9	29.0	51.9				

Table 3c. Observed (obs.) and relative (rel.) survival of patients with fem. genitale cancer by age category for period 1988-2011 (N=13,732).

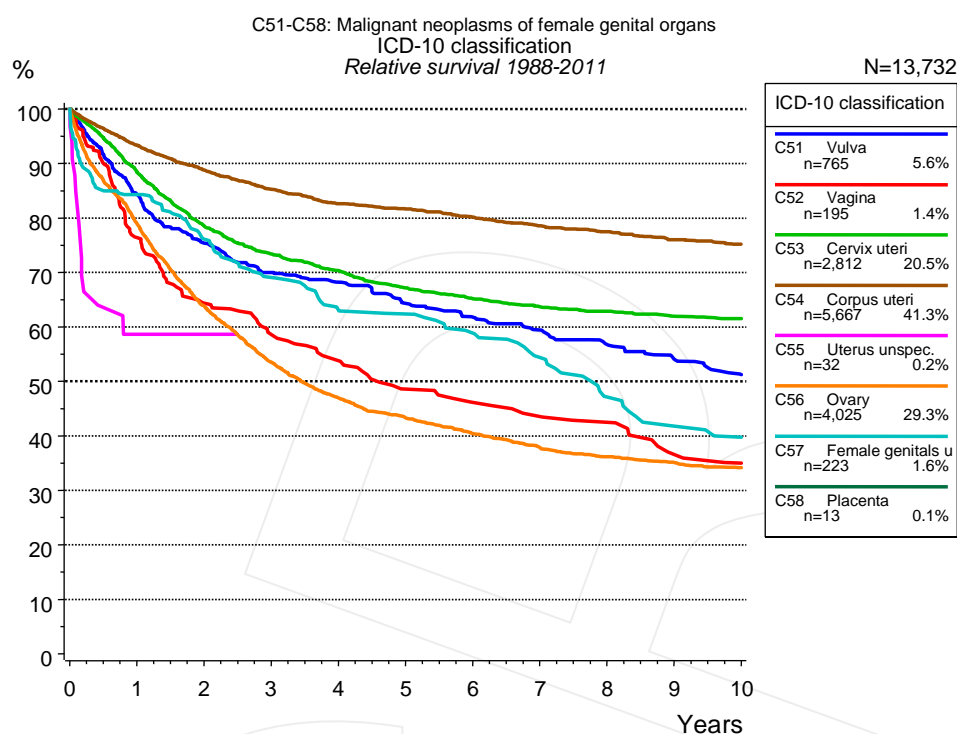


Figure 4a. Relative survival of patients with fem. genitale cancer by ICD-10 classification. Included in the evaluation are 13,732 cases diagnosed between 1988 and 2011. Subgroups with sample size <15 are dropped from the chart.

ICD-10 classification															
	C51 Vulva		C52 Vagina		C53 Cervix uteri		C54 Corpus uteri		C55 Uterus unspec.		C56 Ovary		C57 Female genitals unspec.		
	n=765		n=195		n=2,812		n=5,667		n=32		n=4,025		n=223		
Years	obs. %	rel. %	obs. %	rel. %	obs. %	rel. %	obs. %	rel. %	obs. %	rel. %	obs. %	rel. %	obs. %	rel. %	
0	100.0	100.0	100.0	100.0	100.0	100.0	100.0	100.0	100.0	100.0	100.0	100.0	100.0	100.0	
1	80.6	84.3	73.7	76.4	87.2	88.4	91.1	93.4	55.8	58.7	77.4	79.0	82.4	84.3	
2	69.6	75.4	60.2	64.4	76.7	78.6	84.6	88.8	55.8	58.7	61.5	63.8	72.4	76.1	
3	62.6	70.0	53.7	58.6	71.0	73.4	79.3	85.3			50.9	53.5	64.4	69.0	
4	59.1	68.2	48.1	53.8	67.4	70.4	75.0	82.6			44.0	47.0	57.7	63.1	
5	54.2	64.3	41.8	48.6	63.8	67.2	72.4	81.6			40.0	43.3	55.7	62.4	
6	50.5	61.8	38.8	46.2	61.3	65.2	69.3	80.2			36.8	40.4	51.5	58.9	
7	47.4	59.4	36.3	43.5	59.4	63.7	66.2	78.6			33.9	37.8	46.3	54.4	
8	44.0	56.8	34.6	42.5	58.2	62.9	63.6	77.4			32.0	36.2	39.0	47.1	
9	40.7	54.1	28.8	36.6	56.7	62.0	60.8	76.0			30.5	35.1	33.8	41.8	
10	37.7	51.3	26.8	35.0	55.7	61.5	58.5	75.1			29.3	34.2	31.9	39.8	

ICD-10 classification
cont'd

C58 Placenta
n=13

Years

obs. %

rel. %

0

100.0

100.0

Table 4b. Observed (obs.) and relative (rel.) survival of patients with fem. genitale cancer by ICD-10 classification for period 1988-2011 (N=13,732).

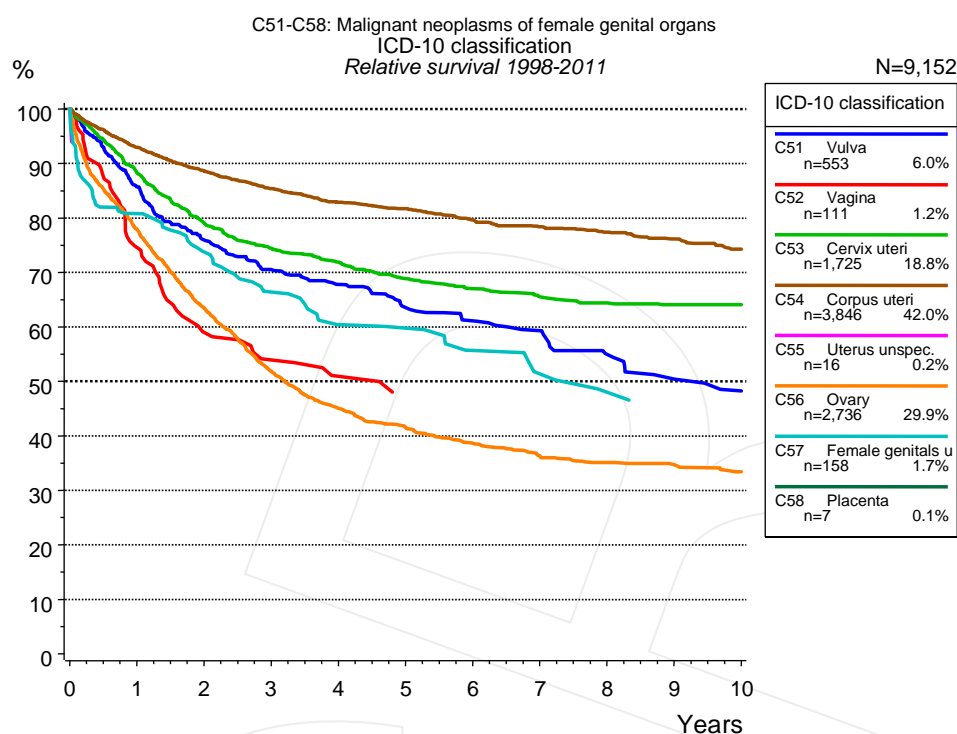


Figure 4c. Relative survival of patients with fem. genitale cancer by ICD-10 classification. Included in the evaluation are 9,152 cases diagnosed between 1998 and 2011. Subgroups with sample size <15 are dropped from the chart.

ICD-10 classification															
	C51 Vulva		C52 Vagina		C53 Cervix uteri		C54 Corpus uteri		C55 Uterus unspec.		C56 Ovary		C57 Female genitals unspec.		
	n=553		n=111		n=1,725		n=3,846		n=16		n=2,736		n=158		
Years	obs. %	rel. %	obs. %	rel. %	obs. %	rel. %	obs. %	rel. %	obs. %	rel. %	obs. %	rel. %	obs. %	rel. %	
0	100.0	100.0	100.0	100.0	100.0	100.0	100.0	100.0	100.0	100.0	100.0	100.0	100.0	100.0	
1	81.9	85.7	71.9	74.5	87.2	88.3	90.8	93.0			76.2	77.9	78.9	80.8	
2	70.0	76.0	54.9	59.0	77.5	79.1	84.7	88.7			61.1	63.4	70.1	73.8	
3	62.7	70.5	49.1	53.9	72.4	74.4	79.8	85.4			49.2	51.9	61.7	66.4	
4	58.5	67.8	45.0	50.9	69.5	71.9	75.8	82.9			42.1	45.1	54.6	60.4	
5	53.6	63.6	41.3	47.9	66.1	68.9	73.0	81.7			38.3	41.6	53.5	59.8	
6	50.1	61.1	41.3	47.2	63.9	67.0	69.6	79.6			35.1	38.6	48.1	55.7	
7	47.3	59.3			62.1	65.5	67.0	78.4			32.5	36.3	43.5	51.4	
8	42.2	55.0			60.7	64.4	64.6	77.4			31.0	35.1	39.9	48.0	
9	37.6	50.4			59.8	64.0	62.1	76.1			30.1	34.7	37.8	45.5	
10	35.6	48.3			59.8	64.0	59.0	74.3			28.5	33.4			

ICD-10 classification
cont'd

C58 Placenta
n=7

Years

obs. %

rel. %

0

100.0

100.0

Table 4d. Observed (obs.) and relative (rel.) survival of patients with fem. genitale cancer by ICD-10 classification for period 1998-2011 (N=9,152).

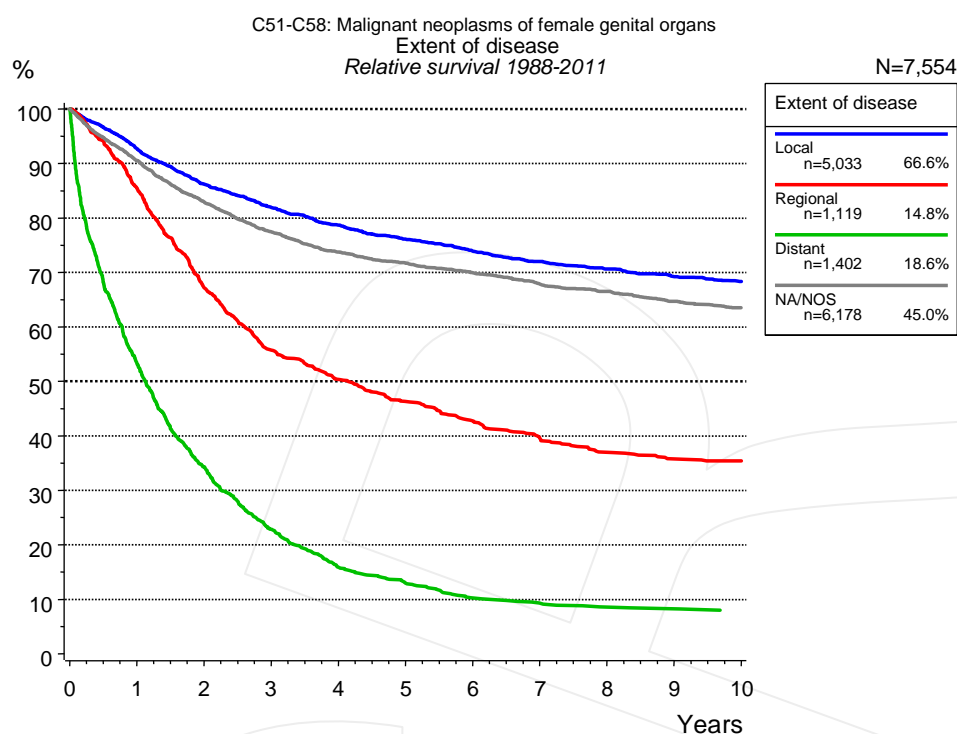


Figure 4e. Relative survival of patients with fem. genitale cancer by extent of disease. For 12,814 of 13,732 cases diagnosed between 1988 and 2011 valid data could be obtained for this item. For a total of 7,554 cases an evaluable classification was established. The grey line represents the subgroup of 6,178 patients with missing values regarding extent of disease (45.0% of 13,732 patients, the percent values of all other categories are related to n=7,554).

Years	Extent of disease							
	Local n=5,033		Regional n=1,119		Distant n=1,402		NA/NOS n=6,178	
	obs. %	rel. %	obs. %	rel. %	obs. %	rel. %	obs. %	rel. %
0	100.0	100.0	100.0	100.0	100.0	100.0	100.0	100.0
1	91.0	92.7	84.3	85.5	51.8	53.2	88.2	90.6
2	83.2	86.2	65.4	67.2	32.9	34.3	78.9	82.9
3	77.8	81.9	53.8	55.8	21.6	22.8	72.0	77.5
4	73.5	78.7	48.0	50.4	14.8	15.9	67.1	73.7
5	69.9	76.1	43.6	46.3	11.9	13.0	63.8	71.7
6	66.8	73.9	39.9	42.7	9.2	10.2	60.9	69.9
7	64.0	72.0	36.5	39.5	8.2	9.3	57.7	67.9
8	61.7	70.7	33.7	37.0	7.5	8.6	55.3	66.5
9	59.4	69.2	32.3	35.8	7.3	8.3	52.5	64.7
10	57.6	68.4	31.6	35.4	6.9	8.0	50.4	63.5

Table 4f. Observed (obs.) and relative (rel.) survival of patients with fem. genitale cancer by extent of disease for period 1988-2011 (N=7,554).

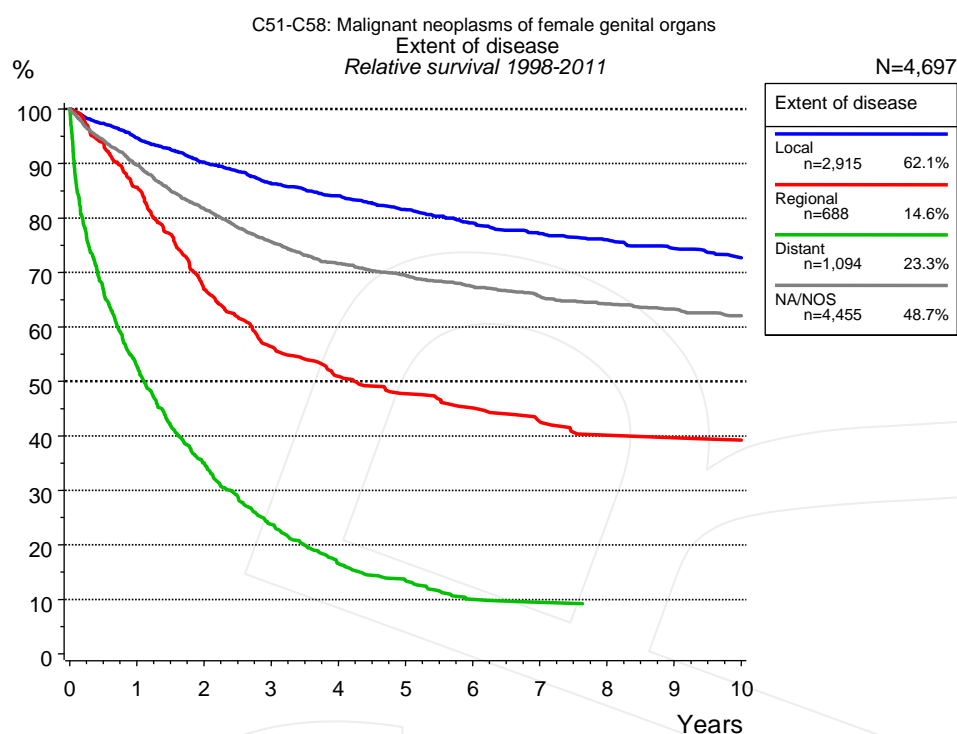


Figure 4g. Relative survival of patients with fem. genitale cancer by extent of disease. For 8,578 of 9,152 cases diagnosed between 1998 and 2011 valid data could be obtained for this item. For a total of 4,697 cases an evaluable classification was established. The grey line represents the subgroup of 4,455 patients with missing values regarding extent of disease (48.7% of 9,152 patients, the percent values of all other categories are related to n=4,697).

Years	Extent of disease							
	Local n=2,915		Regional n=688		Distant n=1,094		NA/NOS n=4,455	
	obs. %	rel. %	obs. %	rel. %	obs. %	rel. %	obs. %	rel. %
0	100.0	100.0	100.0	100.0	100.0	100.0	100.0	100.0
1	93.1	94.7	84.4	85.6	51.4	52.8	87.3	89.7
2	87.4	90.3	65.0	66.8	33.5	35.0	77.8	81.7
3	82.3	86.3	54.3	56.4	22.4	23.8	70.5	75.7
4	79.0	84.0	48.6	50.9	15.4	16.6	65.4	71.6
5	75.5	81.6	45.0	47.7	12.3	13.4	62.2	69.5
6	72.0	79.0	42.5	45.1	9.0	10.0	59.2	67.4
7	69.1	77.1	39.6	42.6	8.4	9.5	56.5	65.6
8	67.1	76.0	36.9	40.1	8.0	9.1	54.2	64.2
9	64.5	74.4	36.2	39.6	8.0	8.7	52.4	63.3
10	62.0	72.7	35.2	39.2			50.4	62.1

Table 4h. Observed (obs.) and relative (rel.) survival of patients with fem. genitale cancer by extent of disease for period 1998-2011 (N=4,697).

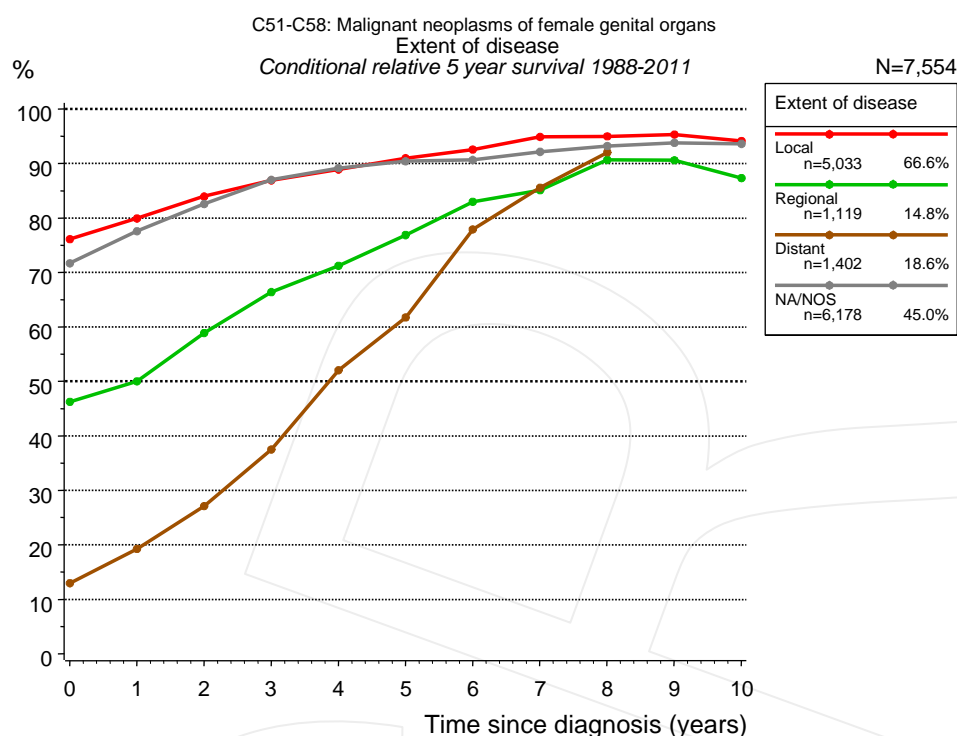


Figure 4i. Conditional relative 5-year survival of patients with fem. genitale cancer by extent of disease. For 12,814 of 13,732 cases diagnosed between 1988 and 2011 valid data could be obtained for this item. For a total of 7,554 cases an evaluable classification was established. The grey line represents the subgroup of 6,178 patients with missing values regarding extent of disease (45.0% of 13,732 patients, the percent values of all other categories are related to n=7,554).

Years	Extent of disease							
	Local		Regional		Distant		NA/NOS	
	n	Cond. surv. % 5 yrs	n	Cond. surv. % 5 yrs	n	Cond. surv. % 5 yrs	n	Cond. surv. % 5 yrs
0	5,033	76.1	1,119	46.3	1,402	13.0	6,178	71.7
1	4,330	79.9	882	50.0	672	19.3	5,217	77.6
2	3,659	83.9	599	58.9	380	27.1	4,383	82.6
3	3,159	86.9	444	66.4	226	37.5	3,667	87.0
4	2,773	88.9	374	71.2	132	52.1	3,098	89.2
5	2,384	91.0	311	76.9	92	61.7	2,656	90.4
6	2,064	92.6	255	83.0	60	77.9	2,280	90.6
7	1,860	94.9	217	85.1	48	85.6	1,952	92.1
8	1,660	95.0	188	90.7	41	92.0	1,688	93.2
9	1,474	95.3	163	90.6			1,444	93.8
10	1,309	94.1	146	87.3			1,225	93.6

Table 4j. Conditional relative 5-year survival of patients with fem. genitale cancer by extent of disease for period 1988-2011 (N=7,554).

Conditional relative survival rates refer to the relative survival probability, in this case for 5 years after cancer diagnosis, compared to the age- and sex-matched population (=100%) under the condition of being alive for a certain time period (x-axis in Figure 4g). The results illustrate to what extent the cancer induced mortality of particular subgroups declines in the subsequent years after detection of the malignancy. For instance, according to the presented survival statistics, patients in the subgroup extent of disease="Local", who are alive at least 3 years after cancer diagnosis, the conditional relative 5-year survival rate is 86.9% (n=3,159).

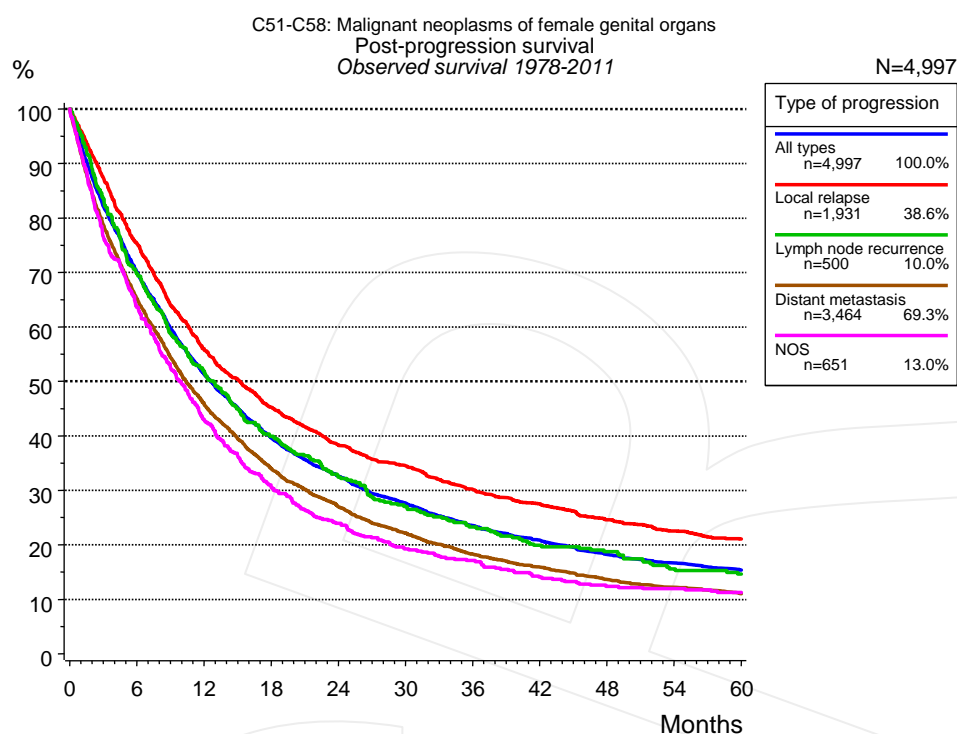


Figure 5a. Observed post-progression survival of 4,997 patients with fem. genitale cancer diagnosed between 1978 and 2011 (incl. M1). These 4,997 patients with documented progression events during their course of disease represent 29.1% of the totally 17,165 evaluated cases. Patients with cancer relapse documented via death certificates only were excluded (n=1,255, 7.3%). Multiple progression types on different sites are included in the evaluation even when not occurring synchronously. The NOS (not otherwise specified) class is included under the condition, that it is the one and only progression type during the course of disease.

Medical record documentation often lacks the linguistic severity to distinguish between local relapse, regional lymph node metastasis and distant spread in solid cancers. Frequently, the statement “not specified” is the only information in registries regarding relapse of the disease. The category “All types” denotes all cases who suffered from at least one relapse during the course of disease (incl. primary M1-status). Although, the real number of relapsed patients is likely to be much higher. The accumulated percentage of patients with local relapse or distant metastasis exceeds the 100% value because patients are potentially considered in more than one subgroup.

Months	Type of progression				
	All types n=4,997 %	Local relapse n=1,931 %	Lymph node recurrence n=500 %	Distant metastasis n=3,464 %	NOS n=651 %
0	100.0	100.0	100.0	100.0	100.0
12	51.3	55.9	51.8	45.9	43.0
24	32.6	38.3	32.4	27.0	24.0
36	23.5	30.1	23.3	18.3	17.1
48	18.2	24.6	18.7	13.6	12.4
60	15.4	21.1	14.6	11.0	11.3

Table 5b. Observed post-progression survival of patients with fem. genitale cancer for period 1978-2011 (N=4,997).

Shortcuts

AS	Assembled survival chart (observed, expected, relative)
CS	Conditional survival
DCO	Death certificate only. The death certificate provides the only notification to the registry.
MCR	Munich Cancer Registry, Germany (Tumorregister München)
NA	Not available
NCI	National Cancer Institute, USA
NOS	Not otherwise specified
OS	Observed/overall survival (Kaplan-Meier estimate)
PPS	Post-progression survival
RS	Relative Survival. Ratio of observed and expected survival (derived from the normal population)
SEER	Surveillance, Epidemiology, and End Results, USA
TTP	Time to progression Date of entry: Date of diagnosis Event (Progression): First local recurrence, lymph node relapse or distant metastasis, unspecified recurrence First all-cause recurrence is illustrated by survival curves (Kaplan-Meier estimate). First local recurrence, lymph node relapse or distant metastasis are depicted cumulatively, where applicable ("reverse" Kaplan-Meier estimate).
UICC	Union for International Cancer Control, Geneva

Recommended Citation

Munich Cancer Registry. Survival C51-C58: Fem. genitale cancer [Internet]. 2013 [updated 2013 Apr 1; cited 2013 May 1]. Available from: http://www.tumorregister-muenchen.de/en/facts/surv/surv_C5158E.pdf

Copyright

The content of the public web site provided by the Munich Cancer Registry is available worldwide and free of charge. All documents are free to download, utilize, copy, print-out and distribute, providing that the MCR is referenced.

Disclaimer

The Munich Cancer Registry reserves the right to not be responsible for the topicality, correctness, completeness or quality of the information provided. Liability claims regarding damage caused by the use of any information provided, including any kind of information which is incomplete or incorrect, will therefore be rejected.

Index of figures and tables

Fig./Tbl.		Page
1a	Relative survival by period of diagnosis (chart)	2
1b	Survival by period of diagnosis (table)	3
2a	Survival of total cohort (chart)	3
2b	Survival of total cohort (table)	4
3a	Relative survival by age category (chart)	4
3b	Observed survival by age category (chart)	5
3c	Survival by age category (table)	5
4a	Relative survival by ICD-10 classification 1988+ (chart)	6
4b	Survival by ICD-10 classification 1988+ (table)	6
4c	Relative survival by ICD-10 classification 1998+ (chart)	7
4d	Survival by ICD-10 classification 1998+ (table)	7
4e	Relative survival by extent of disease 1988+ (chart)	8
4f	Survival by extent of disease 1988+ (table)	8
4g	Relative survival by extent of disease 1998+ (chart)	9
4h	Survival by extent of disease 1998+ (table)	9
4i	Conditional survival by extent of disease (chart)	10
4j	Conditional survival by extent of disease (table)	10
5a	Observed post-progression survival (chart)	11
5b	Observed post-progression survival (table)	11