

Munich Cancer Registry



- ▶ Baseline statistics
- ▶ Selection Matrix
- ▶ Homepage

Munich Cancer Registry at Munich Cancer Center
Marchioninstr. 15
Munich, 81377
Germany

<http://www.tumorregister-muenchen.de/en>

Cancer statistics: Survival

C75: Other endocrine glands cancer

Year of diagnosis	1998-2011
Patients	98
Diseases	98
Creation date	04/01/2013
Export date	01/03/2013
Population	4.5 m



http://www.tumorregister-muenchen.de/en/facts/surv/surv_C75__E.pdf

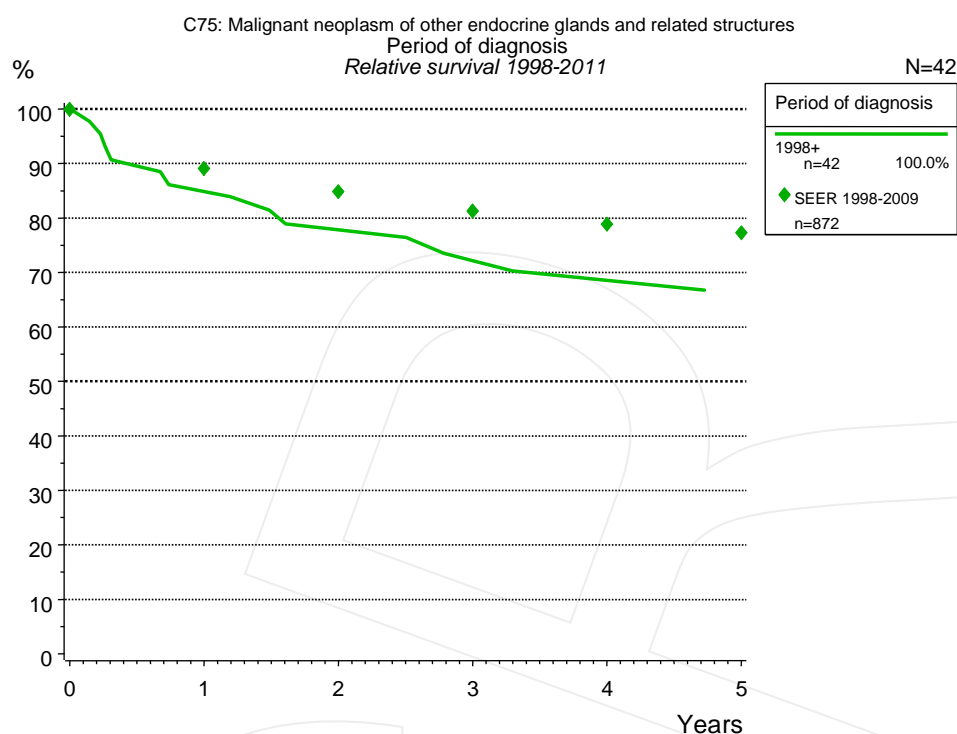


Figure 1a. Relative survival of patients with other endocrine glands cancer by period of diagnosis. Included in the evaluation are 42 cases diagnosed between 1998 and 2011.

The survival results of the SEER program (Surveillance, Epidemiology, and End Results) of the American National Cancer Institute (NCI) are summarized as the period of diagnosis from 1998 to 2009, and are represented by green diamonds in order to facilitate comparisons between MCR and SEER.

The presented survival curves are derived from clinical records with valid follow-up informations, which means that death certificate cases (DCO) cases are omitted from the analysis. With this one restriction, the MCR has provided population-based statistics since 1998, collecting data on all cancer cases in the region of southern Bavaria. Historical data of previous time periods can be heavily selected, therefore, univariate survival comparisons of the presented time periods must be carefully considered. Nonetheless, all calculable survival curves are depicted to facilitate the comparison of long time follow-up analyses of relative survival between particular cancers.

Period of diagnosis		
1998+ n=42		
Years	obs. %	rel. %
0	100.0	100.0
1	85.6	84.8
2	77.9	77.8
3	71.9	72.1
4	68.5	68.5
5	64.5	66.0

Table 1b. Observed (obs.) and relative (rel.) survival of patients with other endocrine glands cancer by period of diagnosis for period 1998-2011 (N=42).

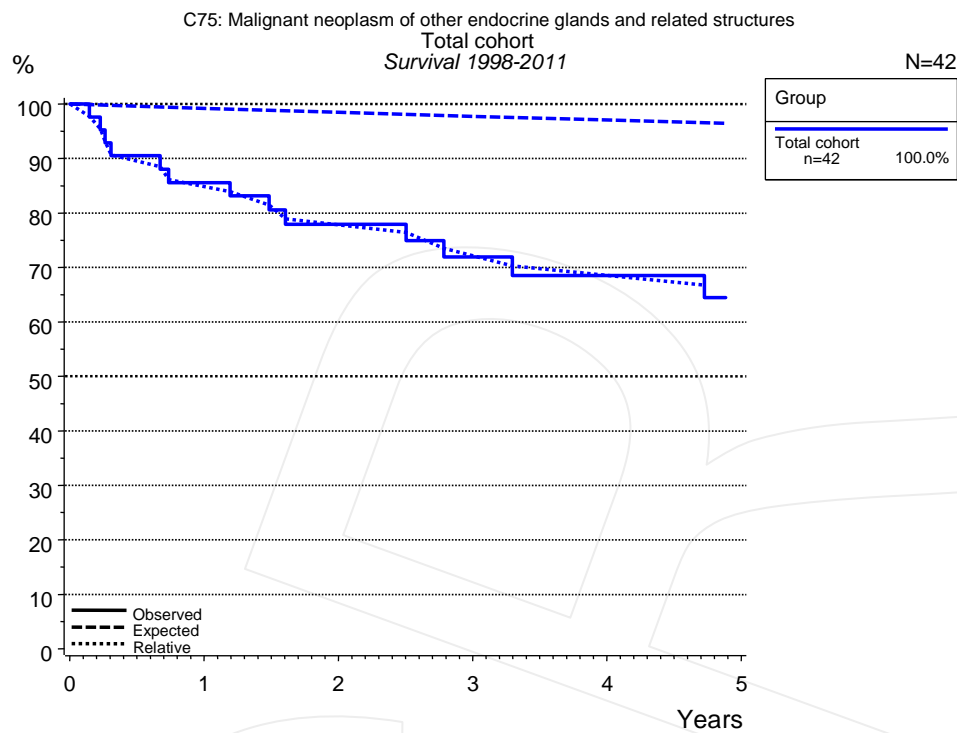


Figure 2a. Observed, expected and relative survival of the total cohort with other endocrine glands cancer. Included in the evaluation are 42 cases diagnosed between 1998 and 2011.

Group		
Total cohort n=42		
Years	obs. %	rel. %
0	100.0	100.0
1	85.6	84.8
2	77.9	77.8
3	71.9	72.1
4	68.5	68.5
5	64.5	66.0

Table 2b. Observed (obs.) and relative (rel.) survival of the total cohort with other endocrine glands cancer for period 1998-2011 (N=42).

Shortcuts

AS	Assembled survival chart (observed, expected, relative)
CS	Conditional survival
DCO	Death certificate only. The death certificate provides the only notification to the registry.
MCR	Munich Cancer Registry, Germany (Tumorregister München)
NA	Not available
NCI	National Cancer Institute, USA
NOS	Not otherwise specified
OS	Observed/overall survival (Kaplan-Meier estimate)
PPS	Post-progression survival
RS	Relative Survival. Ratio of observed and expected survival (derived from the normal population)
SEER	Surveillance, Epidemiology, and End Results, USA
TTP	Time to progression Date of entry: Date of diagnosis Event (Progression): First local recurrence, lymph node relapse or distant metastasis, unspecified recurrence First all-cause recurrence is illustrated by survival curves (Kaplan-Meier estimate). First local recurrence, lymph node relapse or distant metastasis are depicted cumulatively, where applicable ("reverse" Kaplan-Meier estimate).
UICC	Union for International Cancer Control, Geneva

Recommended Citation

Munich Cancer Registry. Survival C75: Other endocrine glands cancer [Internet]. 2013 [updated 2013 Apr 1; cited 2013 May 1]. Available from: http://www.tumorregister-muenchen.de/en/facts/surv/surv_C75__E.pdf

Copyright

The content of the public web site provided by the Munich Cancer Registry is available worldwide and free of charge. All documents are free to download, utilize, copy, print-out and distribute, providing that the MCR is referenced.

Disclaimer

The Munich Cancer Registry reserves the right to not be responsible for the topicality, correctness, completeness or quality of the information provided. Liability claims regarding damage caused by the use of any information provided, including any kind of information which is incomplete or incorrect, will therefore be rejected.

Index of figures and tables

Fig./Tbl.		Page
1a	Relative survival by period of diagnosis (chart)	2
1b	Survival by period of diagnosis (table)	2
2a	Survival of total cohort (chart)	3
2b	Survival of total cohort (table)	3