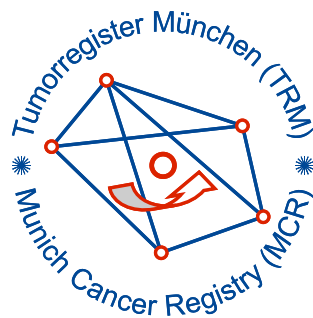


Munich Cancer Registry



- ▶ [Baseline statistics](#)
- ▶ [Selection Matrix](#)
- ▶ [Homepage](#)

Munich Cancer Registry at Munich Cancer Center
Marchioninstr. 15
Munich, 81377
Germany

<http://www.tumorregister-muenchen.de/en>

Cancer statistics: Survival

C91-C95: Leukaemias

Year of diagnosis	1978-1987	1988-1997	1998-2011
Patients	514	1,231	6,973
Diseases	515	1,234	7,023
Creation date	04/01/2013		
Export date	01/03/2013		
Population	4.5 m		



http://www.tumorregister-muenchen.de/en/facts/surv/surv_C9195E.pdf

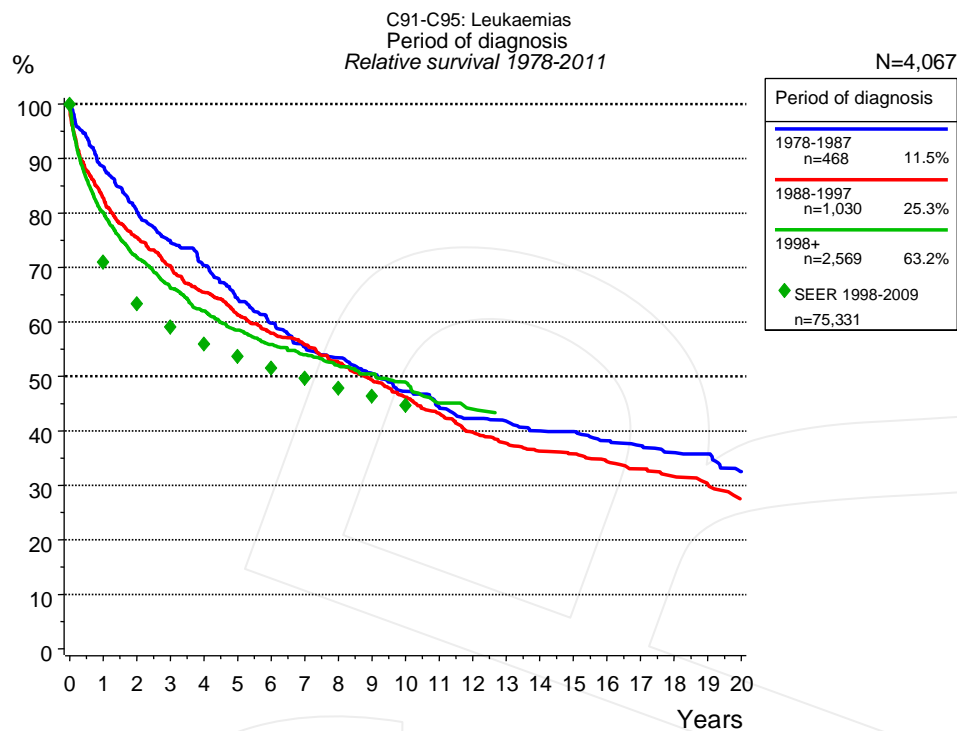


Figure 1a. Relative survival of patients with leukaemias by period of diagnosis. Included in the evaluation are 4,067 cases diagnosed between 1978 and 2011.

The survival results of the SEER program (Surveillance, Epidemiology, and End Results) of the American National Cancer Institute (NCI) are summarized as the period of diagnosis from 1998 to 2009, and are represented by green diamonds in order to facilitate comparisons between MCR and SEER.

The presented survival curves are derived from clinical records with valid follow-up informations, which means that death certificate cases (DCO) cases are omitted from the analysis. With this one restriction, the MCR has provided population-based statistics since 1998, collecting data on all cancer cases in the region of southern Bavaria. Historical data of previous time periods can be heavily selected, therefore, univariate survival comparisons of the presented time periods must be carefully considered. Nonetheless, all calculable survival curves are depicted to facilitate the comparison of long time follow-up analyses of relative survival between particular cancers.

Years	Period of diagnosis					
	1978-1987		1988-1997		1998+	
	n=468		n=1,030		n=2,569	
	obs. %	rel. %	obs. %	rel. %	obs. %	rel. %
0	100.0	100.0	100.0	100.0	100.0	100.0
1	87.0	88.5	81.0	82.7	78.1	80.1
2	77.6	80.3	72.7	75.5	68.7	71.9
3	70.7	74.7	66.5	70.3	62.1	66.2
4	65.3	70.3	60.8	65.4	57.1	62.0
5	58.5	64.3	55.7	61.2	53.0	58.5
6	53.3	59.8	51.8	57.9	49.8	55.9
7	48.5	55.4	49.1	55.8	47.3	54.0
8	45.9	53.4	45.5	52.6	44.9	52.0
9	42.7	50.5	41.9	49.3	43.0	50.5
10	39.2	47.3	38.6	46.2	40.8	48.9
11	36.1	44.3	35.6	43.2	37.0	45.1
12	33.9	42.3	32.2	39.8	35.7	44.0
13	32.8	41.8	30.1	37.7		
14	31.0	40.0	28.5	36.3		
15	30.6	39.8	27.7	35.8		
16	28.6	38.2	26.2	34.4		
17	27.5	37.3	24.9	33.0		
18	26.2	36.0	23.5	31.6		
19	25.7	35.8	22.0	30.2		
20	22.8	32.5	19.6	27.5		

Table 1b. Observed (obs.) and relative (rel.) survival of patients with leukaemias by period of diagnosis for period 1978-2011 (N=4,067).

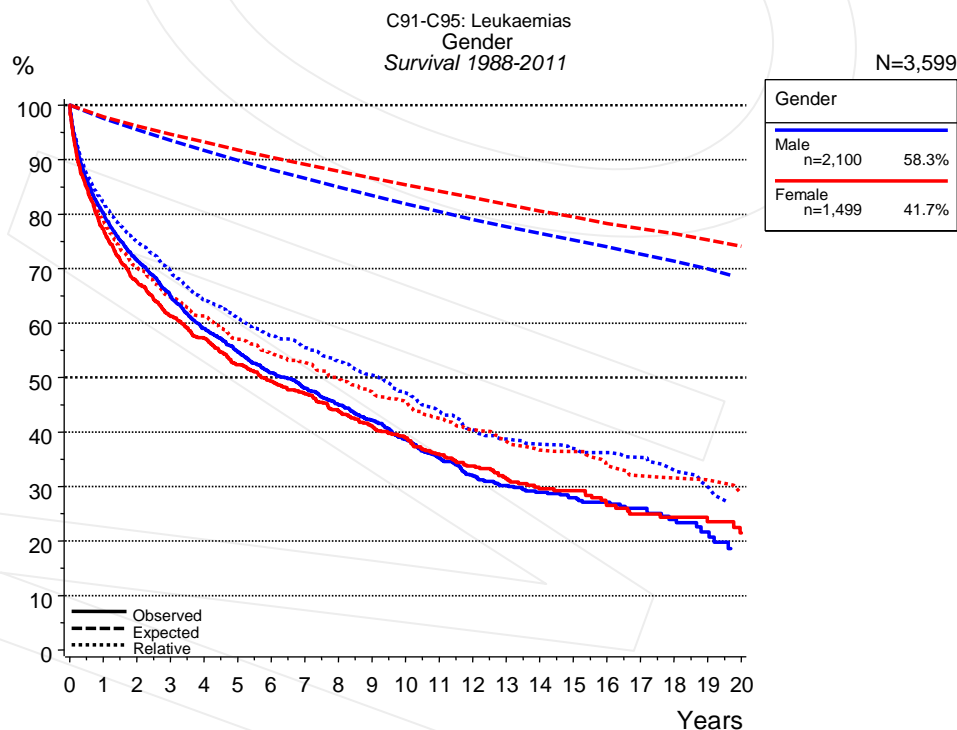


Figure 2a. Survival of patients with leukaemias by gender. Included in the evaluation are 3,599 cases diagnosed between 1988 and 2011.

Years	Gender			
	Male n=2,100		Female n=1,499	
	obs. %	rel. %	obs. %	rel. %
0	100.0	100.0	100.0	100.0
1	80.2	82.2	77.3	79.0
2	71.6	74.9	67.6	70.3
3	65.0	69.4	61.3	64.7
4	59.0	64.3	57.2	61.3
5	54.7	60.8	52.4	57.0
6	50.8	57.7	49.3	54.4
7	48.0	55.5	47.1	52.8
8	45.0	52.9	44.0	49.9
9	42.1	50.5	41.2	47.4
10	38.7	47.2	38.9	45.5
11	35.3	43.8	36.0	42.5
12	31.9	40.4	33.7	40.4
13	30.2	38.7	31.4	38.3
14	29.0	37.8	29.6	36.7
15	28.0	37.0	29.2	36.4
16	27.1	36.2	26.5	33.8
17	26.0	35.3	25.0	32.0
18	23.9	33.0	24.3	31.6
19	21.7	29.9	23.5	31.2
20			21.5	28.9

Table 2b. Observed (obs.) and relative (rel.) survival of patients with leukaemias by gender for period 1988-2011 (N=3,599).

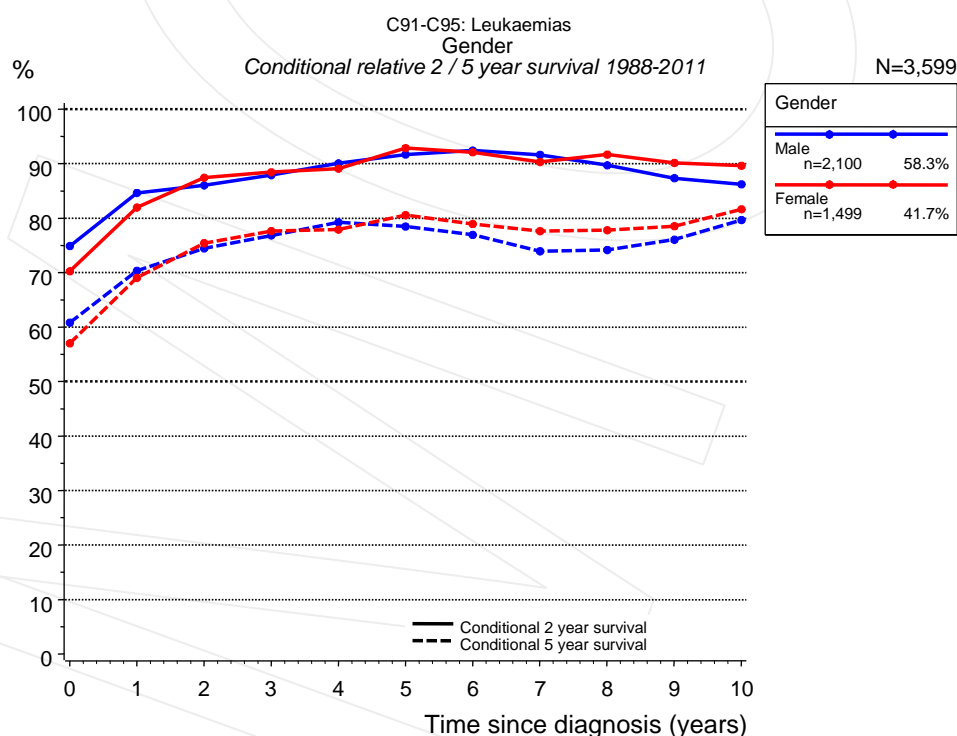


Figure 2c. Conditional relative 2 / 5-year survival of patients with leukaemias by gender. For 3,599 of 3,599 cases diagnosed between 1988 and 2011 valid data could be obtained for this item.

Years	Gender					
	Male			Female		
	n	Cond. surv. % 2 yrs	5 yrs	n	Cond. surv. % 2 yrs	5 yrs
0	2,100	74.9	60.8	1,499	70.3	57.0
1	1,600	84.6	70.4	1,101	82.0	69.0
2	1,319	86.0	74.4	905	87.4	75.4
3	1,097	87.9	76.8	746	88.4	77.6
4	899	90.1	79.2	628	89.1	77.9
5	743	91.7	78.5	518	92.9	80.6
6	608	92.4	76.9	444	92.1	78.9
7	525	91.6	73.9	379	90.3	77.6
8	443	89.7	74.2	318	91.7	77.8
9	370	87.3	76.0	264	90.2	78.5
10	304	86.2	79.6	223	89.6	81.6

Table 2d. Conditional relative 2 / 5-year survival of patients with leukaemias by gender for period 1988-2011 (N=3,599).

Conditional relative survival rates refer to the relative survival probability, in this case for 2 and 5 years after cancer diagnosis, compared to the age- and sex-matched population (=100%) under the condition of being alive for a certain time period (x-axis in Figure 2a). The results illustrate to what extent the cancer induced mortality of particular subgroups declines in the subsequent years after detection of the malignancy. For instance, according to the presented survival statistics, patients in the subgroup gender="Male", who are alive at least 3 years after cancer diagnosis, the conditional relative 2-year survival rate is 87.9% (n=1,097).

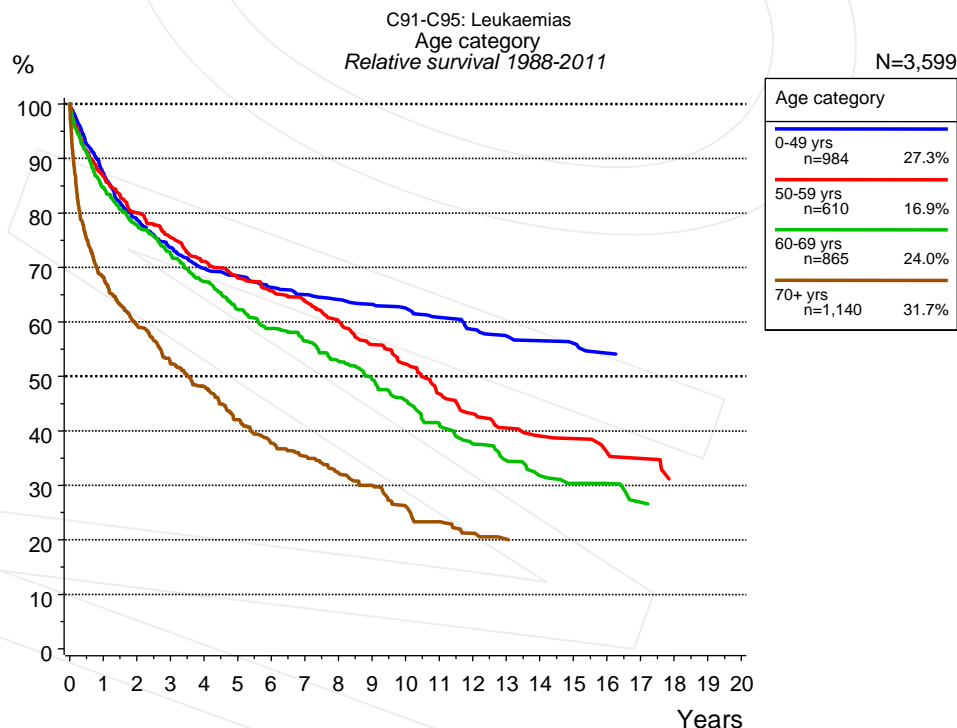


Figure 3a. Relative survival of patients with leukaemias by age category. Included in the evaluation are 3,599 cases diagnosed between 1988 and 2011.

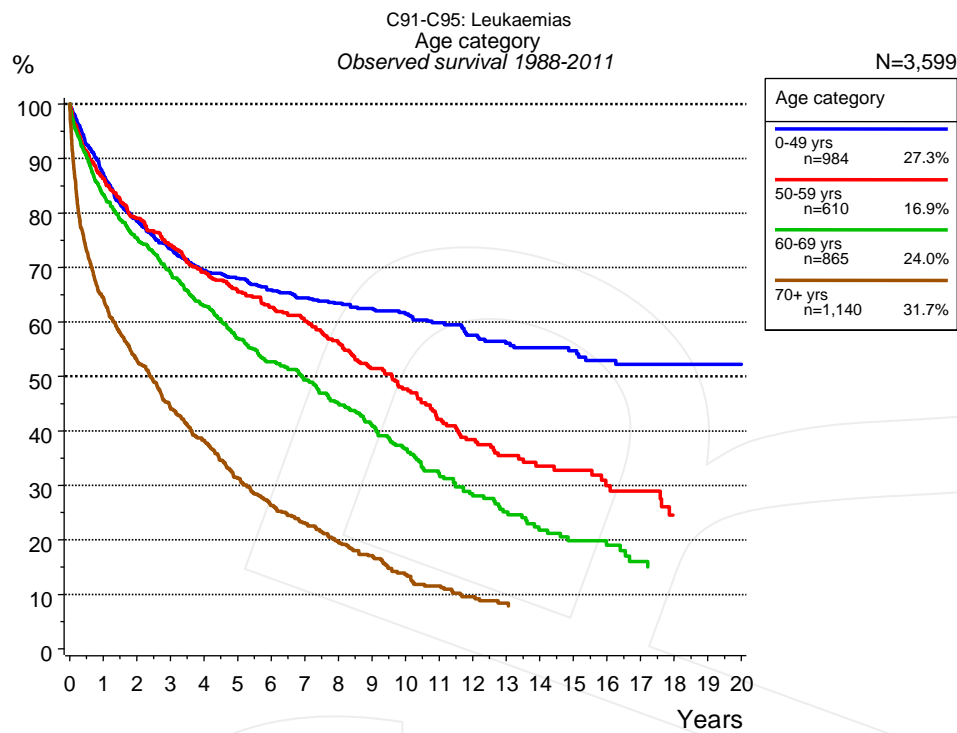


Figure 3b. Observed survival of patients with leukaemias by age category. Included in the evaluation are 3,599 cases diagnosed between 1988 and 2011.

Years	Age category							
	0-49 yrs n=984		50-59 yrs n=610		60-69 yrs n=865		70+ yrs n=1,140	
	obs. %	rel. %	obs. %	rel. %	obs. %	rel. %	obs. %	rel. %
0	100.0	100.0	100.0	100.0	100.0	100.0	100.0	100.0
1	87.2	87.3	86.2	86.7	83.3	84.6	64.5	68.3
2	78.5	78.7	79.0	80.0	75.5	77.8	53.0	59.5
3	73.4	73.6	74.1	75.5	68.9	72.4	44.3	52.6
4	69.5	69.8	69.1	71.1	62.9	67.4	38.3	48.2
5	68.0	68.4	65.5	68.1	57.0	62.3	31.3	42.0
6	65.9	66.3	62.6	65.7	52.7	58.8	26.3	37.7
7	64.4	65.0	60.1	63.8	49.3	56.5	23.1	35.4
8	63.4	64.1	56.3	60.2	45.0	52.7	19.6	32.3
9	62.5	63.2	51.4	55.8	41.1	49.4	17.1	30.0
10	61.5	62.5	47.7	52.3	36.7	45.6	13.6	26.2
11	59.8	60.8	42.1	46.8	32.3	41.3	11.5	23.3
12	57.5	58.6	38.4	43.1	28.1	37.6	9.5	21.2
13	56.1	57.4	35.4	40.5	25.1	34.5	8.4	20.1
14	55.2	56.5	33.5	39.0	21.8	31.8	7.9	20.0
15	54.7	56.1	32.8	38.6	19.9	30.4	7.9	20.0
16	52.9	54.2	30.0	36.1	19.0	30.4		
17			29.0	34.9	16.0	26.9		
18			24.5	30.8	15.0	26.3		

Table 3c. Observed (obs.) and relative (rel.) survival of patients with leukaemias by age category for period 1988-2011 (N=3,599).

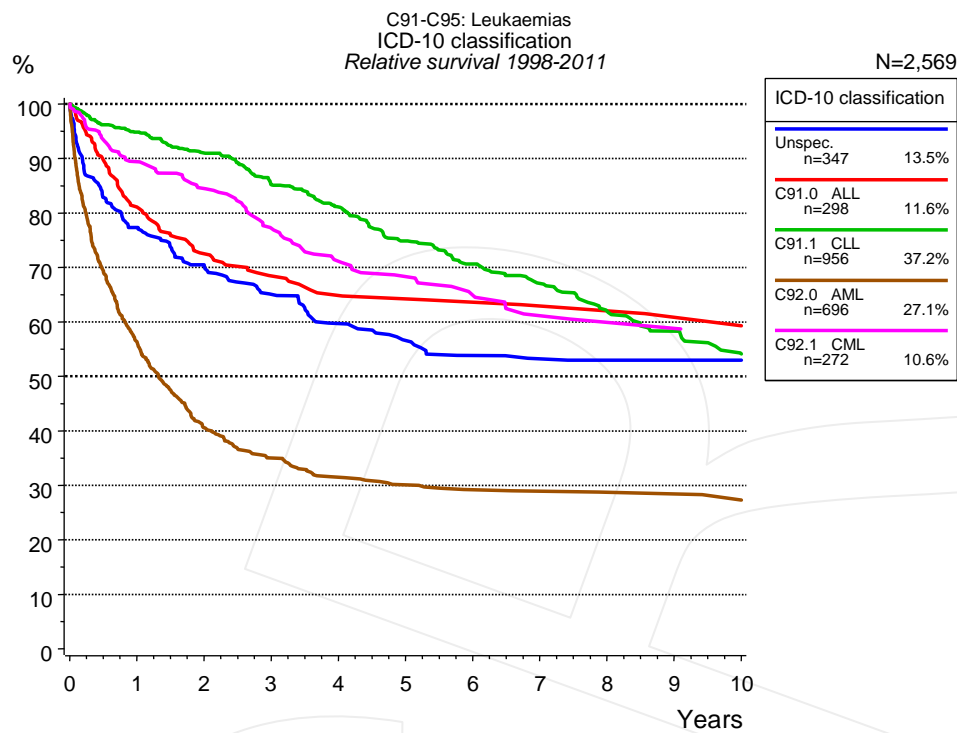


Figure 4a. Relative survival of patients with leukaemias by ICD-10 classification. Included in the evaluation are 2,569 cases diagnosed between 1998 and 2011.

Years	ICD-10 classification									
	Unspec. n=347		C91.0 ALL n=298		C91.1 CLL n=956		C92.0 AML n=696		C92.1 CML n=272	
	obs. %	rel. %	obs. %	rel. %	obs. %	rel. %	obs. %	rel. %	obs. %	rel. %
0	100.0	100.0	100.0	100.0	100.0	100.0	100.0	100.0	100.0	100.0
1	75.2	77.4	80.7	81.1	92.1	94.8	55.3	56.4	87.9	89.4
2	66.6	70.4	72.2	72.5	85.9	91.0	39.2	40.6	81.7	84.5
3	60.3	65.0	68.0	68.5	78.3	85.2	33.5	35.0	73.3	77.2
4	54.4	59.7	64.7	64.8	72.7	81.1	29.9	31.5	66.7	71.1
5	50.5	56.6	64.1	64.2	65.6	74.9	28.4	30.1	63.3	68.3
6	47.2	53.8	63.3	63.6	60.4	70.6	27.2	29.2	59.7	64.9
7	45.9	53.2	62.3	62.9	56.0	67.1	26.8	28.9	55.4	61.2
8	45.2	53.0	62.3	62.0	50.6	61.9	26.2	28.7	54.1	59.9
9	44.2	53.0	60.5	60.9	46.8	58.3	26.2	28.4	54.1	58.9
10	44.2	53.0	60.5	59.3	42.1	54.2	25.3	27.3	51.6	56.8

Table 4b. Observed (obs.) and relative (rel.) survival of patients with leukaemias by ICD-10 classification for period 1998-2011 (N=2,569).

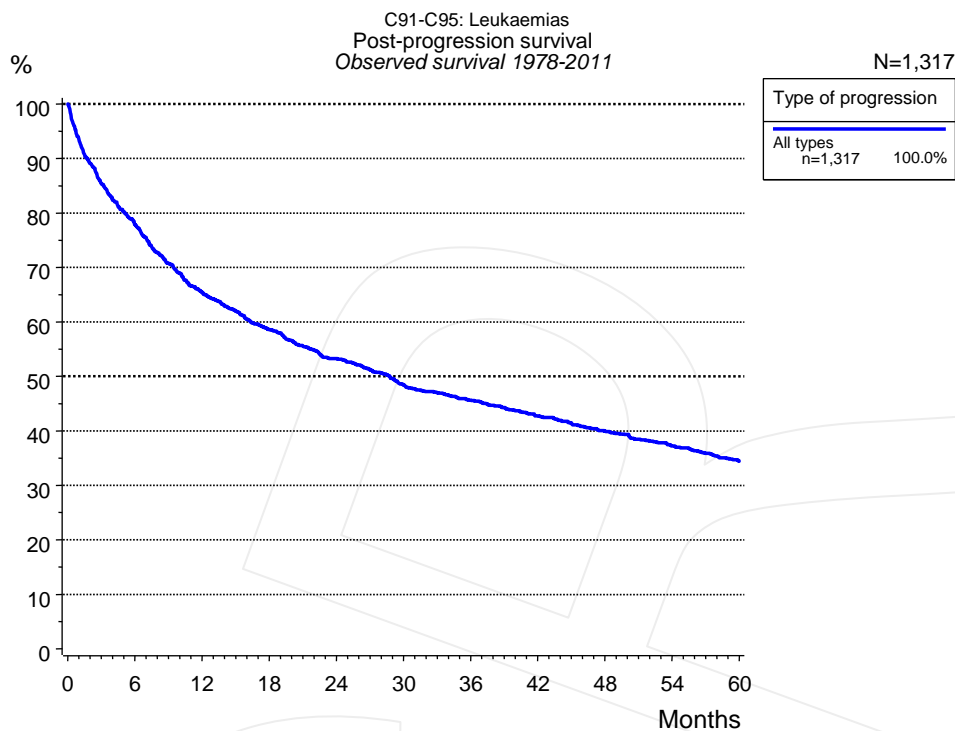


Figure 5a. Observed post-progression survival of 1,317 patients with leukaemias diagnosed between 1978 and 2011 (incl. M1). These 1,317 patients with documented progression events during their course of disease represent 32.4% of the totally 4,067 evaluated cases. Patients with cancer relapse documented via death certificates only were excluded (n=715, 17.6%).

Medical record documentation often lacks the linguistic severity to distinguish between local relapse, regional lymph node metastasis and distant spread in solid cancers. Frequently, the statement “not specified” is the only information in registries regarding relapse of the disease. The category “All types” denotes all cases who suffered from at least one relapse during the course of disease (incl. primary M1-status). Although, the real number of relapsed patients is likely to be much higher. The accumulated percentage of patients with local relapse or distant metastasis exceeds the 100% value because patients are potentially considered in more than one subgroup.

Type of progression	
All types n=1,317	
Months	%
0	100.0
12	65.4
24	53.2
36	45.6
48	40.0
60	34.4

Table 5b. Observed post-progression survival of patients with leukaemias for period 1978-2011 (N=1,317).

Shortcuts

AS	Assembled survival chart (observed, expected, relative)
CS	Conditional survival
DCO	Death certificate only. The death certificate provides the only notification to the registry.
MCR	Munich Cancer Registry, Germany (Tumorregister München)
NA	Not available
NCI	National Cancer Institute, USA
NOS	Not otherwise specified
OS	Observed/overall survival (Kaplan-Meier estimate)
PPS	Post-progression survival
RS	Relative Survival. Ratio of observed and expected survival (derived from the normal population)
SEER	Surveillance, Epidemiology, and End Results, USA
TTP	Time to progression Date of entry: Date of diagnosis Event (Progression): First local recurrence, lymph node relapse or distant metastasis, unspecified recurrence First all-cause recurrence is illustrated by survival curves (Kaplan-Meier estimate). First local recurrence, lymph node relapse or distant metastasis are depicted cumulatively, where applicable ("reverse" Kaplan-Meier estimate).
UICC	Union for International Cancer Control, Geneva

Recommended Citation

Munich Cancer Registry. Survival C91-C95: Leukaemias [Internet]. 2013 [updated 2013 Apr 1; cited 2013 May 1]. Available from: http://www.tumorregister-muenchen.de/en/facts/surv/surv_C9195E.pdf

Copyright

The content of the public web site provided by the Munich Cancer Registry is available worldwide and free of charge. All documents are free to download, utilize, copy, print-out and distribute, providing that the MCR is referenced.

Disclaimer

The Munich Cancer Registry reserves the right to not be responsible for the topicality, correctness, completeness or quality of the information provided. Liability claims regarding damage caused by the use of any information provided, including any kind of information which is incomplete or incorrect, will therefore be rejected.

Index of figures and tables

Fig./Tbl.		Page
1a	Relative survival by period of diagnosis (chart)	2
1b	Survival by period of diagnosis (table)	3
2a	Survival by gender (chart)	3
2b	Survival by gender (table)	4
2c	Conditional survival by gender (chart)	4
2d	Conditional survival by gender (table)	5
3a	Relative survival by age category (chart)	5
3b	Observed survival by age category (chart)	6
3c	Survival by age category (table)	6
4a	Relative survival by ICD-10 classification (chart)	7
4b	Survival by ICD-10 classification (table)	7
5a	Observed post-progression survival (chart)	8
5b	Observed post-progression survival (table)	8