

# Munich Cancer Registry



- ▶ Baseline statistics
- ▶ Selection Matrix
- ▶ Homepage
- ▶ *Deutsch*

Munich Cancer Registry at Munich Cancer Center  
Marchioninstr. 15  
Munich, 81377  
Germany

<http://www.tumorregister-muenchen.de/en>

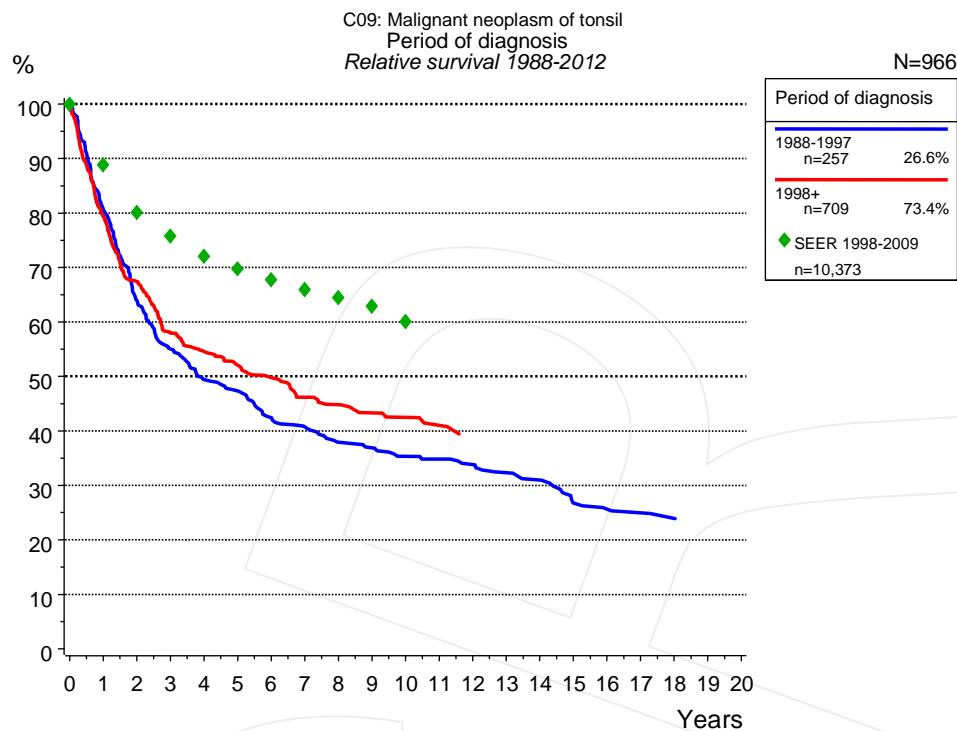
## Cancer statistics: Survival

### C09: Tonsil cancer

Year of diagnosis	1988-2012
Patients	1,582
Diseases	1,589
Cases evaluated	966
Creation date	03/25/2014
Export date	02/12/2014
Population	4.5 m



[http://www.tumorregister-muenchen.de/en/facts/surv/surv\\_C09\\_\\_E.pdf](http://www.tumorregister-muenchen.de/en/facts/surv/surv_C09__E.pdf)



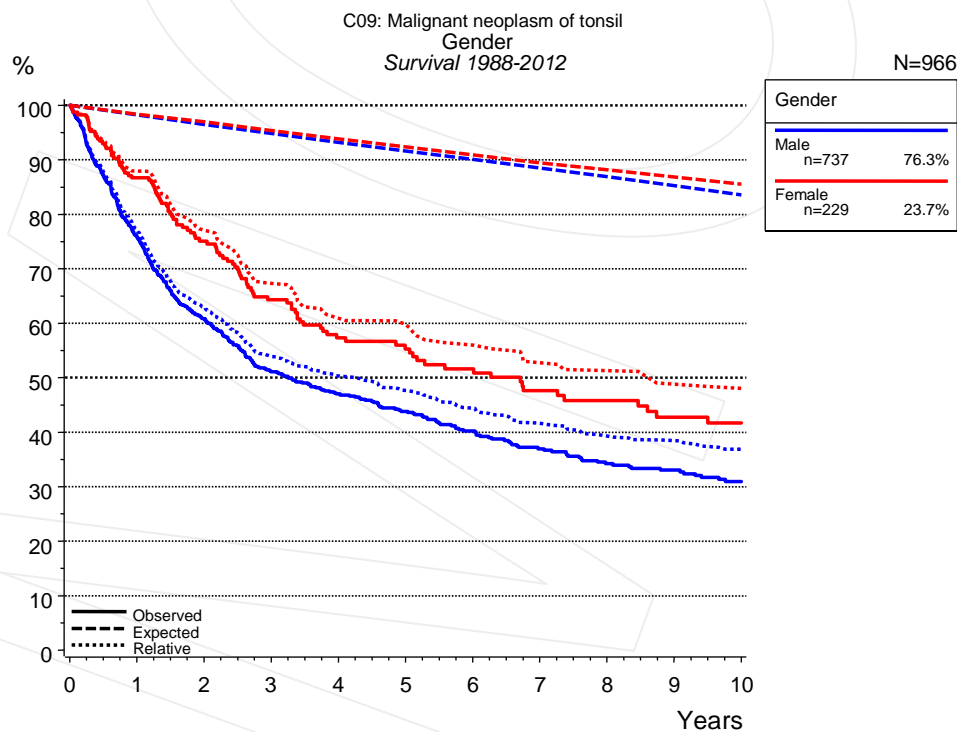
**Figure 1a.** Relative survival of patients with tonsil cancer by period of diagnosis. Included in the evaluation are 966 cases diagnosed between 1988 and 2012.

The survival results of the SEER program (Surveillance, Epidemiology, and End Results) of the American National Cancer Institute (NCI) are summarized as the period of diagnosis from 1998 to 2009, and are represented by green diamonds in order to facilitate comparisons between MCR and SEER.

The presented survival curves are derived from clinical records with valid follow-up informations, which means that death certificate cases (DCO) cases are omitted from the analysis. With this one restriction, the MCR has provided population-based statistics since 1988, collecting data on all cancer cases in the region of southern Bavaria. Historical data of previous time periods can be heavily selected, therefore, univariate survival comparisons of the presented time periods must be carefully considered. Nonetheless, all calculable survival curves are depicted to facilitate the comparison of long time follow-up analyses of relative survival between particular cancers.

Years	Period of diagnosis			
	1988-1997 n=257		1998+ n=709	
	obs. %	rel. %	obs. %	rel. %
0	100.0	100.0	100.0	100.0
1	79.0	80.4	78.1	79.4
2	61.9	63.9	65.3	67.4
3	52.1	55.0	55.1	57.9
4	45.9	49.4	51.2	54.5
5	43.6	47.3	47.9	52.0
6	38.5	42.4	45.5	49.8
7	36.2	40.7	41.2	46.2
8	33.0	37.9	39.5	44.8
9	31.9	36.9	37.4	43.3
10	29.9	35.3	36.1	42.5
11	29.1	34.8	34.3	41.0
12	27.8	33.8	31.8	39.1
13	26.1	32.3	31.8	38.1
14	24.6	31.0		
15	20.5	26.8		
16	19.4	25.6		
17	18.9	24.9		
18	18.0	23.9		

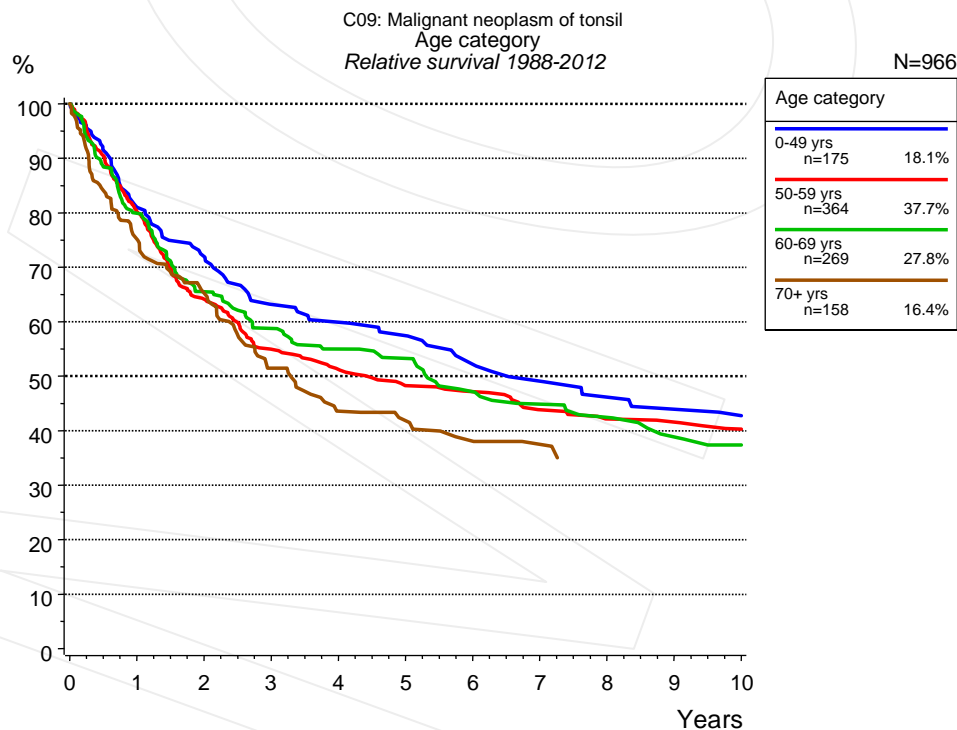
**Table 1b.** Observed (obs.) and relative (rel.) survival of patients with tonsil cancer by period of diagnosis for period 1988-2012 (N=966).



**Figure 2a.** Survival of patients with tonsil cancer by gender. Included in the evaluation are 966 cases diagnosed between 1988 and 2012.

Years	Gender			
	Male n=737		Female n=229	
	obs. %	rel. %	obs. %	rel. %
0	100.0	100.0	100.0	100.0
1	75.7	77.1	86.7	87.9
2	60.8	62.9	75.0	77.1
3	51.1	53.9	64.3	67.3
4	47.0	50.3	57.3	60.9
5	43.8	47.7	55.3	59.8
6	40.2	44.4	51.6	56.0
7	36.9	41.6	47.6	52.8
8	34.2	39.3	45.8	51.3
9	33.0	38.5	42.8	48.8
10	31.0	36.9	41.7	48.1

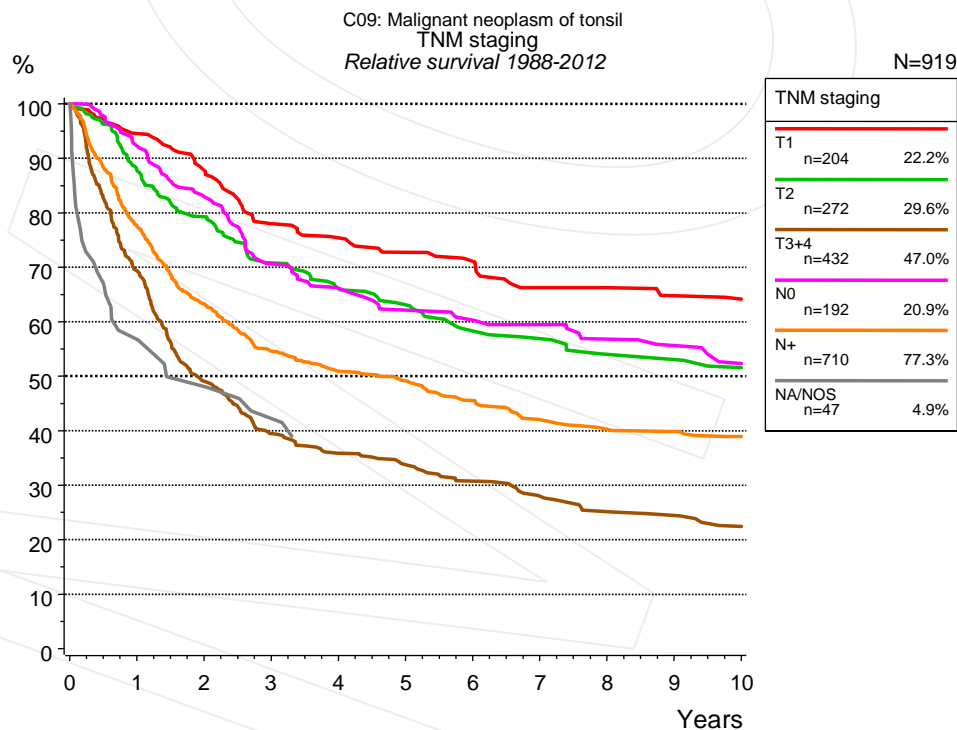
**Table 2b.** Observed (obs.) and relative (rel.) survival of patients with tonsil cancer by gender for period 1988-2012 (N=966).



**Figure 3a.** Relative survival of patients with tonsil cancer by age category. Included in the evaluation are 966 cases diagnosed between 1988 and 2012.

Years	Age category							
	0-49 yrs n=175		50-59 yrs n=364		60-69 yrs n=269		70+ yrs n=158	
	obs. %	rel. %	obs. %	rel. %	obs. %	rel. %	obs. %	rel. %
0	100.0	100.0	100.0	100.0	100.0	100.0	100.0	100.0
1	80.7	81.0	79.5	80.1	78.9	79.9	71.8	75.2
2	72.0	71.9	63.4	64.1	63.7	65.5	58.3	65.3
3	62.6	63.2	53.7	54.9	56.3	58.8	42.8	51.5
4	59.6	59.9	49.9	51.2	51.6	55.0	34.0	43.6
5	57.1	57.4	46.4	48.3	49.2	53.3	31.0	41.9
6	52.6	52.2	45.1	47.2	42.8	47.2	26.9	38.1
7	48.6	49.1	41.3	43.8	39.5	44.9	24.5	37.5
8	45.2	46.1	39.3	42.2	36.8	42.4	21.6	35.1
9	42.8	43.9	38.8	41.6	32.7	38.8	21.6	35.1
10	41.5	42.8	36.9	40.3	30.4	37.4		

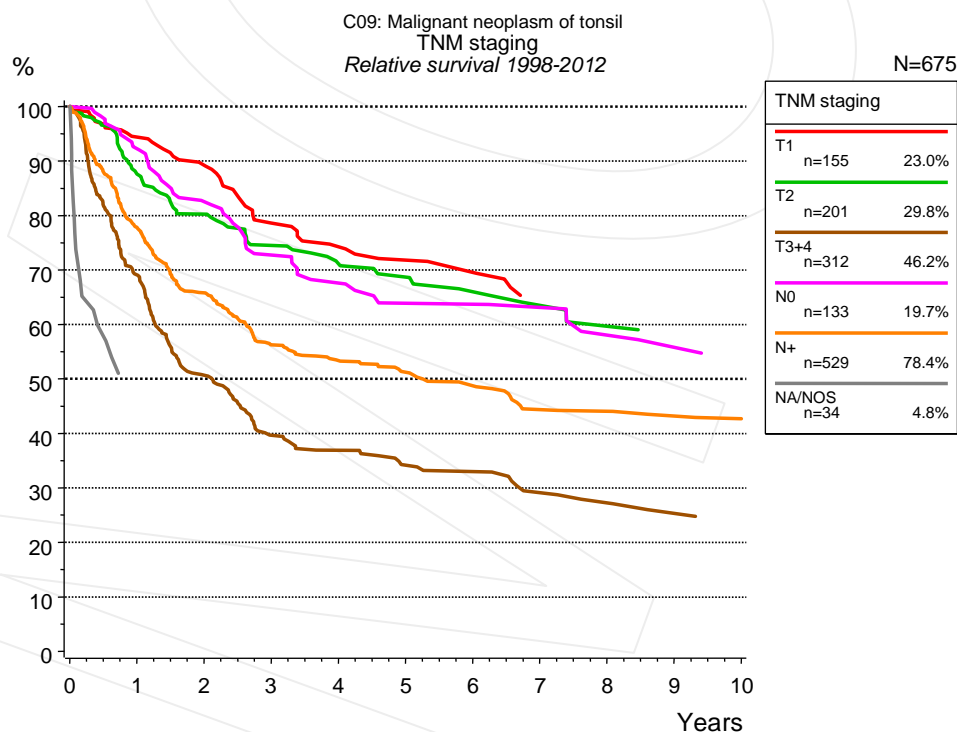
**Table 3b.** Observed (obs.) and relative (rel.) survival of patients with tonsil cancer by age category for period 1988-2012 (N=966).



**Figure 4a.** Relative survival of patients with tonsil cancer by TNM staging. For 922 of 966 cases diagnosed between 1988 and 2012 valid data could be obtained for this item. For a total of 919 cases an evaluable classification was established. The accumulated percentage exceeds the 100% value because patients are potentially considered in more than one subgroup. The grey line represents the subgroup of 47 patients with missing values regarding TNM staging (4.9% of 966 patients, the percent values of all other categories are related to n=919).

	TNM staging											
	T1 n=204		T2 n=272		T3+4 n=432		N0 n=192		N+ n=710		NA/NOS n=47	
Years	obs. %	rel. %	obs. %	rel. %	obs. %	rel. %	obs. %	rel. %	obs. %	rel. %	obs. %	rel. %
0	100.0	100.0	100.0	100.0	100.0	100.0	100.0	100.0	100.0	100.0	100.0	100.0
1	93.5	94.5	86.3	87.7	68.1	69.4	91.5	92.2	76.2	77.5	57.1	56.7
2	85.9	87.7	77.0	79.3	47.4	49.1	80.8	83.0	61.2	63.2	48.0	48.1
3	75.1	78.0	67.5	70.8	37.2	39.5	67.5	70.7	51.8	54.6	41.1	42.2
4	71.9	75.4	62.2	66.0	33.1	35.9	62.2	66.2	47.7	50.9		
5	68.4	72.7	58.7	63.1	30.8	33.8	57.8	62.1	45.3	49.1		
6	66.0	71.1	53.7	58.3	27.5	30.8	55.4	60.3	41.3	45.5		
7	60.2	66.2	51.3	56.9	24.6	28.0	53.6	59.5	37.4	42.0		
8	59.1	66.2	47.7	54.0	22.0	25.2	49.9	56.8	35.3	40.3		
9	56.8	64.7	46.8	53.0	21.0	24.4	47.9	55.6	34.6	39.9		
10	55.5	64.1	44.5	51.5	18.8	22.4	44.4	52.3	33.0	38.9		

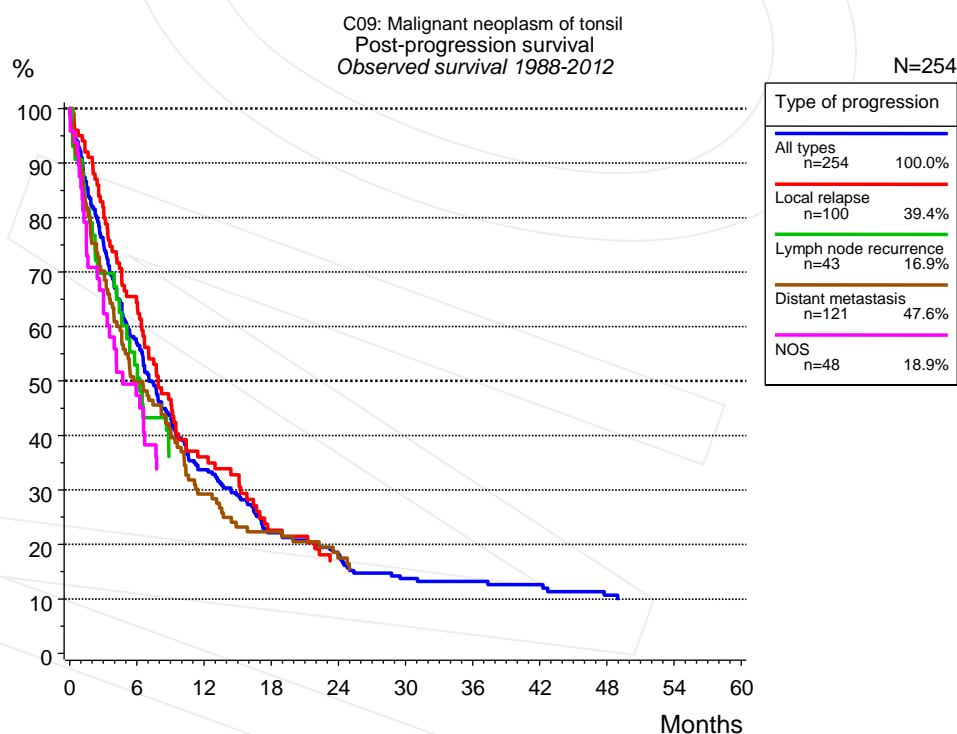
**Table 4b.** Observed (obs.) and relative (rel.) survival of patients with tonsil cancer by TNM staging for period 1988-2012 (N=1,810).



**Figure 4c.** Relative survival of patients with tonsil cancer by TNM staging. For 678 of 709 cases diagnosed between 1998 and 2012 valid data could be obtained for this item. For a total of 675 cases an evaluable classification was established. The accumulated percentage exceeds the 100% value because patients are potentially considered in more than one subgroup. The grey line represents the subgroup of 34 patients with missing values regarding TNM staging (4.8% of 709 patients, the percent values of all other categories are related to n=675).

TNM staging																		
	T1 n=155			T2 n=201			T3+4 n=312			N0 n=133			N+ n=529			NA/NOS n=34		
Years	obs. %	rel. %	obs. %	rel. %	obs. %	rel. %	obs. %	rel. %	obs. %	rel. %	obs. %	rel. %	obs. %	rel. %	obs. %	rel. %		
0	100.0	100.0	100.0	100.0	100.0	100.0	100.0	100.0	100.0	100.0	100.0	100.0	100.0	100.0	100.0	100.0		
1	93.4	94.4	86.4	87.6	68.0	69.1	91.5	92.3	76.5	77.8	49.5	48.3						
2	87.6	89.2	78.5	80.2	48.9	50.7	80.5	82.5	63.8	65.8								
3	75.6	78.6	71.8	74.5	37.4	39.7	70.3	72.7	53.5	56.2								
4	71.0	74.3	67.7	71.1	34.3	36.9	64.9	67.6	50.0	53.3								
5	67.8	71.8	64.8	68.7	30.9	34.1	59.9	63.9	47.2	51.2								
6	66.6	69.6	61.0	66.0	29.7	33.0	59.9	63.7	44.7	48.7								
7	59.4	65.3	57.8	63.5	25.7	29.1	58.1	63.1	39.6	44.4								
8	59.4	65.3	54.0	59.7	23.9	27.2	52.3	58.0	39.0	44.1								
9	59.4	65.2	51.8	58.5	21.9	25.3	50.2	55.8	37.4	43.2								
10	59.4	65.1	51.8	57.6					36.4	42.7								

**Table 4d.** Observed (obs.) and relative (rel.) survival of patients with tonsil cancer by TNM staging for period 1998-2012 (N=1,330).



**Figure 5a.** Observed post-progression survival of 254 patients with tonsil cancer diagnosed between 1988 and 2012 (incl. M1). These 254 patients with documented progression events during their course of disease represent 26.3% of the totally 966 evaluated cases. Patients with cancer relapse documented via death certificates only were excluded (n=133, 13.8%). Multiple progression types on different sites are included in the evaluation even when not occurring

synchronously. The NOS (not otherwise specified) class is included under the condition, that it is the one and only progression type during the course of disease.

Medical record documentation often lacks the linguistic severity to distinguish between local relapse, regional lymph node metastasis and distant spread in solid cancers. Frequently, the statement "not specified" is the only information in registries regarding relapse of the disease. The category "All types" denotes all cases who suffered from at least one relapse during the course of disease (incl. primary M1-status). Although, the real number of relapsed patients is likely to be much higher. The accumulated percentage of patients with local relapse or distant metastasis exceeds the 100% value because patients are potentially considered in more than one subgroup.

Months	Type of progression				
	All types n=254 %	Local relapse n=100 %	Lymph node recurrence n=43 %	Distant metastasis n=121 %	NOS n=48 %
0	100.0	100.0	100.0	100.0	100.0
12	33.7	36.0		29.2	
24	18.1	16.9		17.5	
36	13.2				
48	10.7				
60	10.0				

**Table 5b.** Observed post-progression survival of patients with tonsil cancer for period 1988-2012 (N=254).



**Shortcuts**

AS	Assembled survival chart (observed, expected, relative)
CS	Conditional survival
DCO	Death certificate only. The death certificate provides the only notification to the registry.
MCR	Munich Cancer Registry, Germany (Tumorregister München)
NA	Not available
NCI	National Cancer Institute, USA
NOS	Not otherwise specified
OS	Observed/overall survival (Kaplan-Meier estimate)
PPS	Post-progression survival
RS	Relative Survival. Ratio of observed and expected survival (derived from the normal population)
SEER	Surveillance, Epidemiology, and End Results, USA
TTP	Time to progression Date of entry: Date of diagnosis Event (Progression): First local recurrence, lymph node relapse or distant metastasis, unspecified recurrence First all-cause recurrence is illustrated by survival curves (Kaplan-Meier estimate). First local recurrence, lymph node relapse or distant metastasis are depicted cumulatively, where applicable ("reverse" Kaplan-Meier estimate).
UICC	Union for International Cancer Control, Geneva

**Recommended Citation**

Munich Cancer Registry. Survival C09: Tonsil cancer [Internet]. 2014 [updated 2014 Mar 25; cited 2014 May 1]. Available from: [http://www.tumorregister-muenchen.de/en/facts/surv/surv\\_C09\\_\\_E.pdf](http://www.tumorregister-muenchen.de/en/facts/surv/surv_C09__E.pdf)

**Copyright**

The content of the public web site provided by the Munich Cancer Registry is available worldwide and free of charge. All documents are free to download, utilize, copy, print-out and distribute, providing that the MCR is referenced.

**Disclaimer**

The Munich Cancer Registry reserves the right to not be responsible for the topicality, correctness, completeness or quality of the information provided. Liability claims regarding damage caused by the use of any information provided, including any kind of information which is incomplete or incorrect, will therefore be rejected.

**Index of figures and tables**

Fig./Tbl.		Page
1a	Relative survival by period of diagnosis (chart)	2
1b	Survival by period of diagnosis (table)	3
2a	Survival by gender (chart)	3
2b	Survival by gender (table)	4
3a	Relative survival by age category (chart)	4
3b	Survival by age category (table)	5
4a	Relative survival by TNM staging 1988+ (chart)	5
4b	Survival by TNM staging 1988+ (table)	6
4c	Relative survival by TNM staging 1998+ (chart)	6
4d	Survival by TNM staging 1998+ (table)	7
5a	Observed post-progression survival (chart)	7
5b	Observed post-progression survival (table)	8