

# Munich Cancer Registry



- ▶ Baseline statistics
- ▶ Selection Matrix
- ▶ Homepage
- ▶ *Deutsch*

Munich Cancer Registry at Munich Cancer Center  
Marchioninstr. 15  
Munich, 81377  
Germany

<http://www.tumorregister-muenchen.de/en>

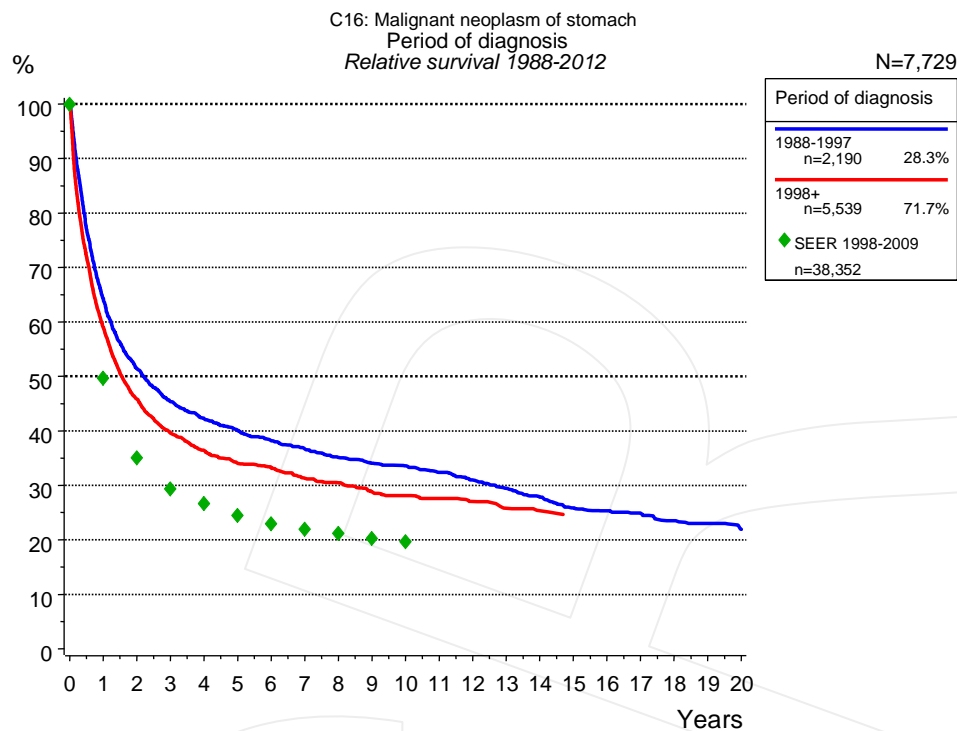
## Cancer statistics: Survival

### C16: Stomach cancer

Year of diagnosis	1988-2012
Patients	13,337
Diseases	13,348
Cases evaluated	7,729
Creation date	03/25/2014
Export date	02/12/2014
Population	4.5 m



[http://www.tumorregister-muenchen.de/en/facts/surv/surv\\_C16\\_\\_E.pdf](http://www.tumorregister-muenchen.de/en/facts/surv/surv_C16__E.pdf)



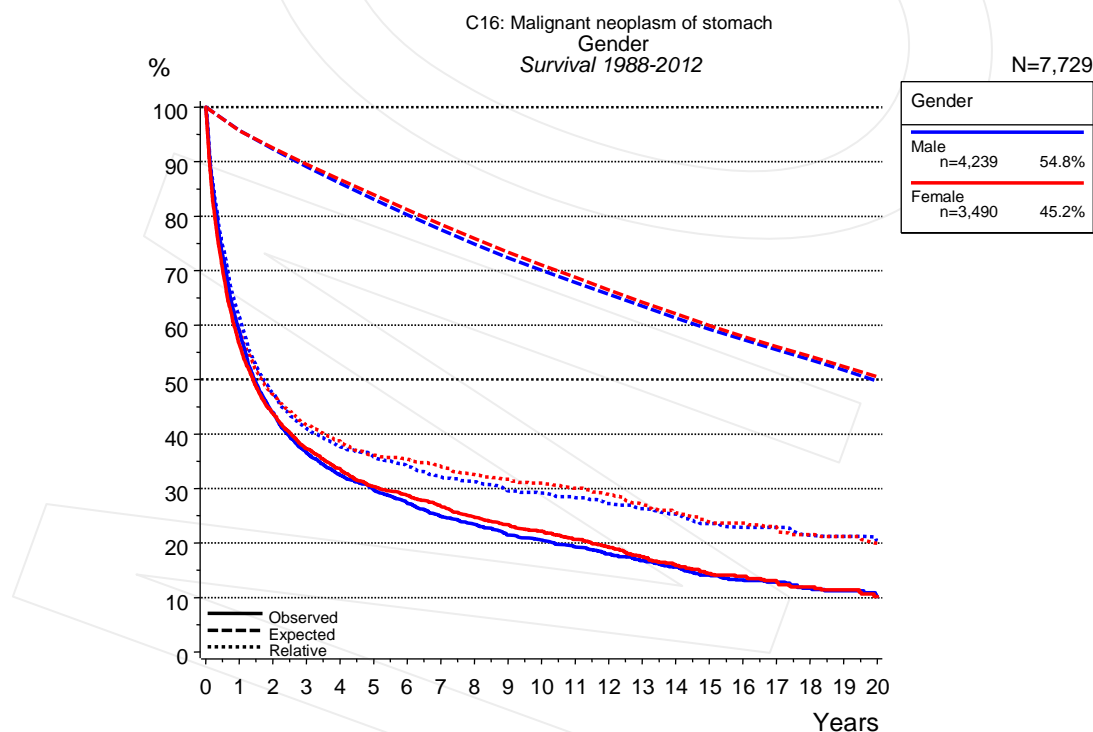
**Figure 1a.** Relative survival of patients with stomach cancer by period of diagnosis. Included in the evaluation are 7,729 cases diagnosed between 1988 and 2012.

The survival results of the SEER program (Surveillance, Epidemiology, and End Results) of the American National Cancer Institute (NCI) are summarized as the period of diagnosis from 1998 to 2009, and are represented by green diamonds in order to facilitate comparisons between MCR and SEER.

The presented survival curves are derived from clinical records with valid follow-up informations, which means that death certificate cases (DCO) cases are omitted from the analysis. With this one restriction, the MCR has provided population-based statistics since 1988, collecting data on all cancer cases in the region of southern Bavaria. Historical data of previous time periods can be heavily selected, therefore, univariate survival comparisons of the presented time periods must be carefully considered. Nonetheless, all calculable survival curves are depicted to facilitate the comparison of long time follow-up analyses of relative survival between particular cancers.

Years	Period of diagnosis			
	1988-1997		1998+	
	n=2,190		n=5,539	
	obs. %	rel. %	obs. %	rel. %
0	100.0	100.0	100.0	100.0
1	61.6	64.0	56.2	58.9
2	47.7	51.4	42.3	45.8
3	40.7	45.4	35.3	39.6
4	36.7	42.2	31.3	36.4
5	33.7	40.1	28.3	34.0
6	31.1	38.2	26.6	33.2
7	28.9	36.7	24.2	31.3
8	26.8	35.1	22.8	30.5
9	25.1	34.1	20.8	28.8
10	24.0	33.6	19.8	28.1
11	22.4	32.3	18.7	27.6
12	20.7	31.0	17.7	27.0
13	19.1	29.4	16.4	25.8
14	17.4	27.8	15.5	25.4
15	15.7	25.8		
16	14.9	25.3		
17	14.1	24.9		
18	13.0	23.5		
19	12.4	23.0		
20	11.2	21.9		

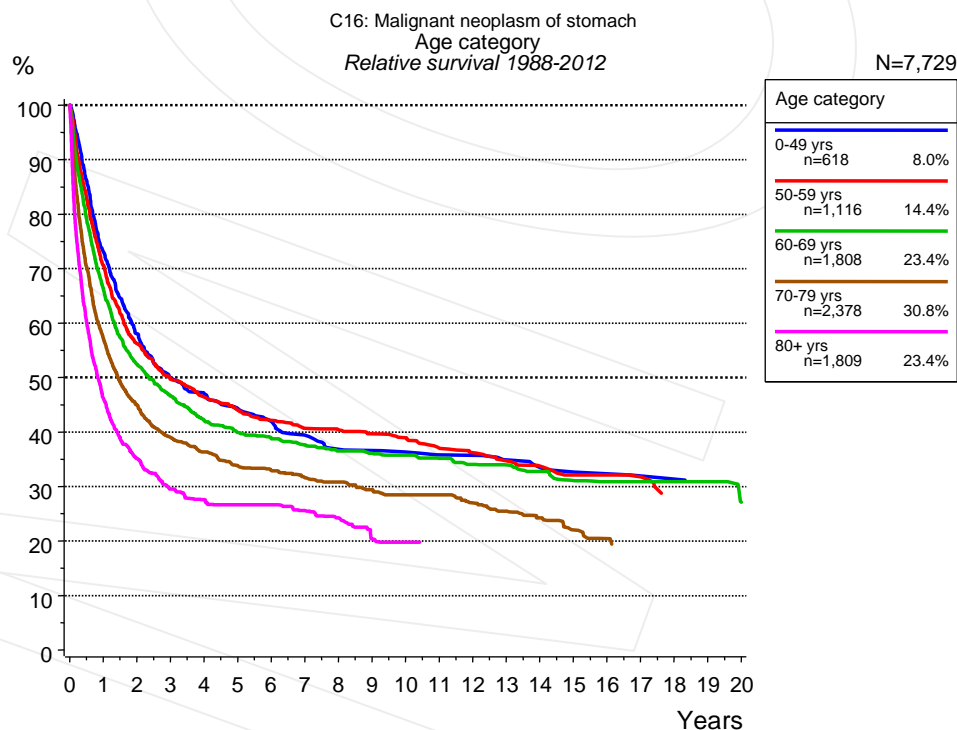
**Table 1b.** Observed (obs.) and relative (rel.) survival of patients with stomach cancer by period of diagnosis for period 1988-2012 (N=7,729).



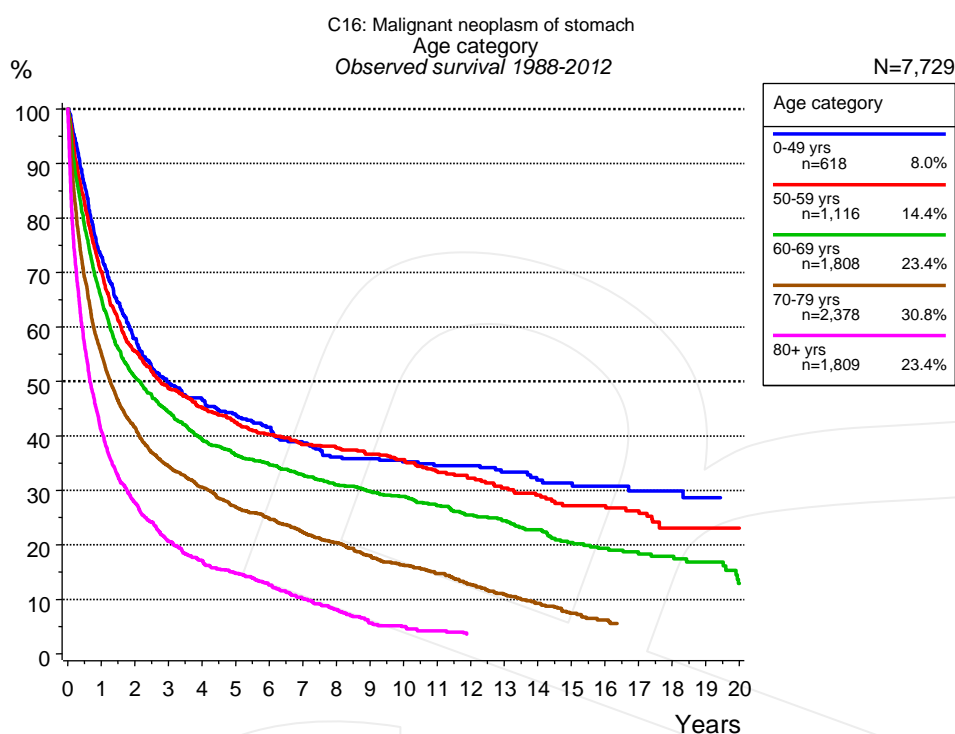
**Figure 2a.** Survival of patients with stomach cancer by gender. Included in the evaluation are 7,729 cases diagnosed between 1988 and 2012.

Years	Gender			
	Male n=4,239		Female n=3,490	
	obs. %	rel. %	obs. %	rel. %
0	100.0	100.0	100.0	100.0
1	58.9	61.5	56.4	59.0
2	44.0	47.6	43.7	47.3
3	36.5	41.0	37.3	41.7
4	32.4	37.6	33.7	38.7
5	29.7	35.7	30.4	36.1
6	27.3	34.0	28.7	35.4
7	24.9	32.1	26.7	34.0
8	23.4	31.2	24.7	32.5
9	21.4	29.6	23.4	31.7
10	20.5	29.2	22.2	31.0
11	19.2	28.3	20.7	30.0
12	17.9	27.3	19.2	28.9
13	16.7	26.3	17.5	27.1
14	15.5	25.3	15.9	25.5
15	14.1	23.5	14.4	23.8
16	13.2	22.8	13.9	23.7
17	12.8	22.8	12.9	22.9
18	11.7	21.4	11.9	21.5
19	11.2	21.2	11.4	21.2
20	10.2	20.4	10.1	20.0

**Table 2b.** Observed (obs.) and relative (rel.) survival of patients with stomach cancer by gender for period 1988-2012 (N=7,729).



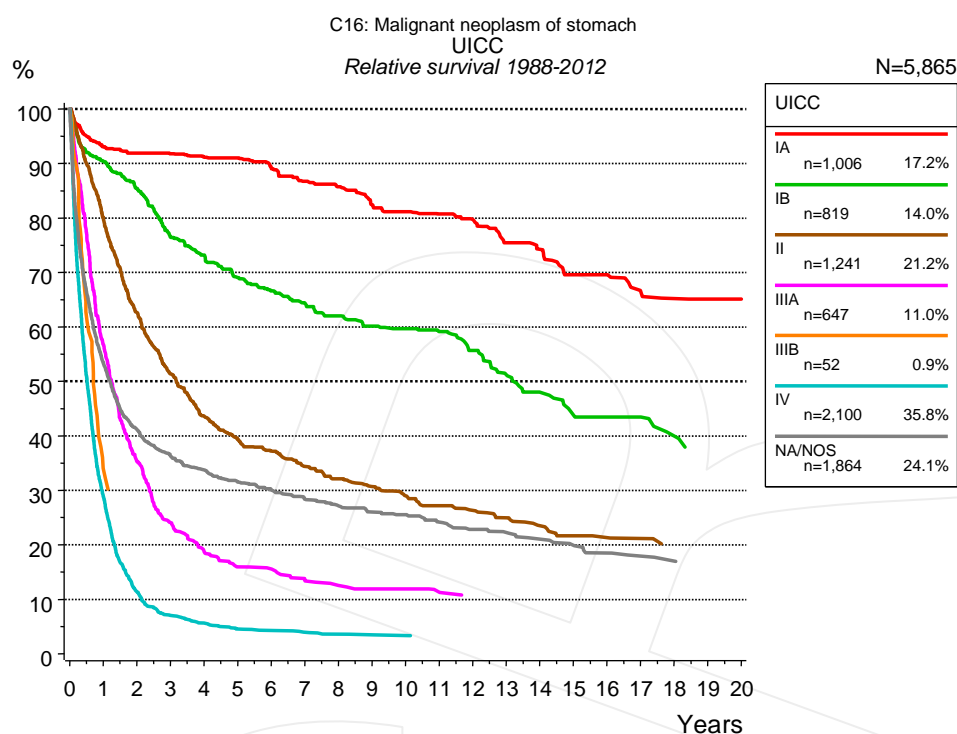
**Figure 3a.** Relative survival of patients with stomach cancer by age category. Included in the evaluation are 7,729 cases diagnosed between 1988 and 2012.



**Figure 3b.** Observed survival of patients with stomach cancer by age category. Included in the evaluation are 7,729 cases diagnosed between 1988 and 2012.

Years	Age category									
	0-49 yrs n=618		50-59 yrs n=1,116		60-69 yrs n=1,808		70-79 yrs n=2,378		80+ yrs n=1,809	
	obs. %	rel. %	obs. %	rel. %	obs. %	rel. %	obs. %	rel. %	obs. %	rel. %
0	100.0	100.0	100.0	100.0	100.0	100.0	100.0	100.0	100.0	100.0
1	72.9	73.1	70.2	70.6	65.2	66.2	55.0	57.2	40.9	46.1
2	57.9	58.0	55.5	56.3	50.8	52.4	41.5	45.0	27.8	35.1
3	49.6	49.9	48.7	49.7	44.4	46.6	34.4	39.0	20.6	29.5
4	46.7	47.1	45.1	46.4	39.3	42.1	30.6	36.3	17.1	27.6
5	43.8	44.4	42.5	44.1	36.5	39.9	26.9	33.8	14.7	26.6
6	41.6	41.9	40.2	42.2	34.7	38.8	24.8	33.0	12.6	26.6
7	38.7	39.4	38.4	40.7	32.9	37.7	22.3	31.6	10.1	25.6
8	36.1	36.8	37.7	40.4	31.0	36.5	20.4	30.8	8.2	24.3
9	35.8	36.6	36.7	39.7	29.7	36.1	18.0	29.4	5.6	20.4
10	35.2	36.3	35.7	38.9	28.9	35.8	16.3	28.5	5.0	19.8
11	34.5	35.8	33.5	37.0	27.2	35.2	14.8	28.5		
12	34.5	35.7	32.2	36.2	25.5	34.0	12.7	27.0		
13	33.3	34.9	30.4	34.7	24.4	34.0	10.9	25.5		
14	31.9	33.5	29.1	33.7	22.8	32.7	9.3	24.2		
15	31.3	32.7	27.2	32.1	20.4	31.1	7.4	22.0		
16	30.7	32.3	27.2	32.1	19.4	30.9	6.2	20.4		
17	29.9	32.0	26.3	31.7	18.3	30.9				
18	29.9	31.4	23.0	28.7	17.9	30.9				
19	28.6	30.6	23.0	28.7	16.9	30.9				
20	28.6	29.7	23.0	28.6	12.9	27.1				

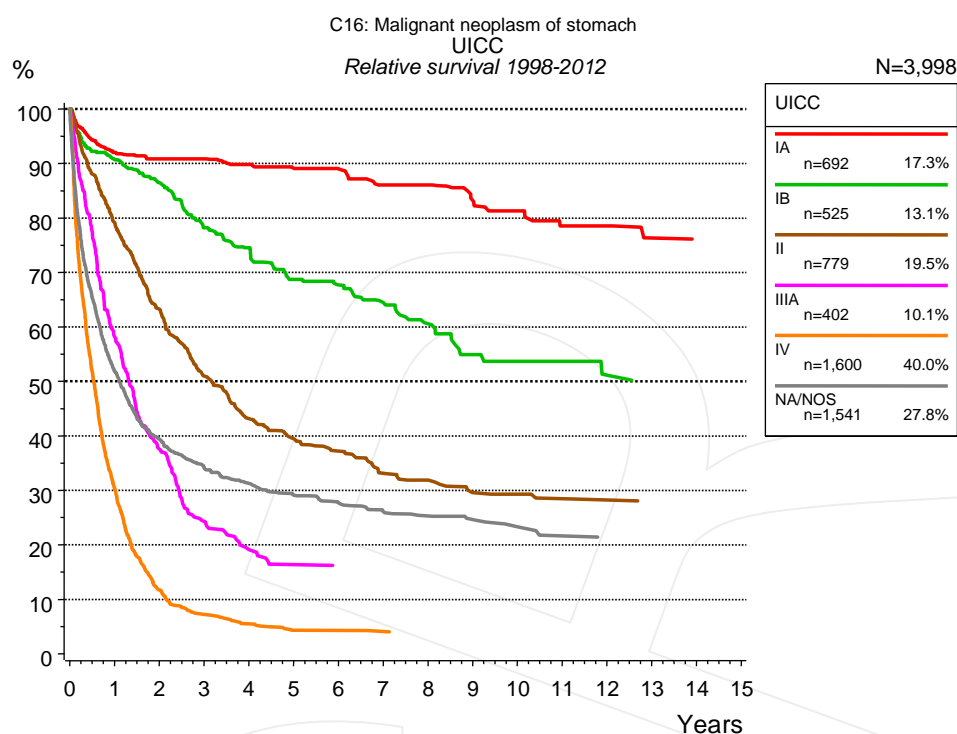
**Table 3c.** Observed (obs.) and relative (rel.) survival of patients with stomach cancer by age category for period 1988-2012 (N=7,729).



**Figure 4a.** Relative survival of patients with stomach cancer by UICC. For 6,340 of 7,729 cases diagnosed between 1988 and 2012 valid data could be obtained for this item. For a total of 5,865 cases an evaluable classification was established. The grey line represents the subgroup of 1,864 patients with missing values regarding UICC (24.1% of 7,729 patients, the percent values of all other categories are related to n=5,865).

UICC														
Years	IA n=1,006		IB n=819		II n=1,241		IIIA n=647		IIIB n=52		IV n=2,100		NA/NOS n=1,864	
	obs. %	rel. %	obs. %	rel. %	obs. %	rel. %	obs. %	rel. %	obs. %	rel. %	obs. %	rel. %	obs. %	rel. %
0	100.0	100.0	100.0	100.0	100.0	100.0	100.0	100.0	100.0	100.0	100.0	100.0	100.0	100.0
1	90.0	93.1	86.9	90.4	77.1	79.8	54.3	56.7	32.7	33.8	27.8	28.8	49.9	53.3
2	86.4	91.9	79.0	85.4	58.5	62.6	32.5	35.3			10.7	11.3	37.0	41.2
3	83.1	91.8	68.1	76.5	46.5	51.4	21.4	24.1			6.5	7.0	31.4	36.3
4	79.9	91.1	62.7	73.2	38.3	43.6	16.2	18.7			5.1	5.6	28.2	33.8
5	77.3	91.0	56.6	69.1	33.4	39.3	13.2	16.0			4.1	4.6	25.5	31.5
6	73.3	89.1	52.3	66.6	30.6	37.2	12.7	15.6			3.8	4.3	23.6	30.0
7	68.9	86.8	48.6	64.4	27.3	34.4	10.6	13.5			3.4	4.0	21.7	28.4
8	65.8	85.7	45.2	62.0	24.7	32.1	9.3	12.6			3.1	3.6	20.3	27.2
9	61.4	82.4	41.9	60.1	22.7	30.7	8.6	11.9			3.0	3.5	18.8	26.0
10	59.3	81.2	40.1	59.7	20.8	29.0	8.6	11.9			2.8	3.4	18.0	25.5
11	56.7	80.7	37.8	59.1	18.9	27.2	7.8	11.3					16.5	24.2
12	54.3	79.7	34.3	55.6	17.7	26.3							15.1	22.8
13	49.8	75.5	30.3	51.2	16.3	25.0							14.4	22.2
14	47.6	74.3	27.2	48.0	14.8	23.5							13.1	21.1
15	43.3	69.6	23.9	43.8	13.3	21.7							12.3	19.9
16	42.3	69.6	22.8	43.5	12.9	21.3							11.0	18.5
17	38.8	66.5	22.8	43.5	12.5	21.2							10.3	17.9
18	37.2	65.2	19.7	39.9	11.3	19.9							9.8	17.0
19	36.2	65.1	17.9	37.7	11.3	19.0							9.2	16.5
20	36.2	65.1												

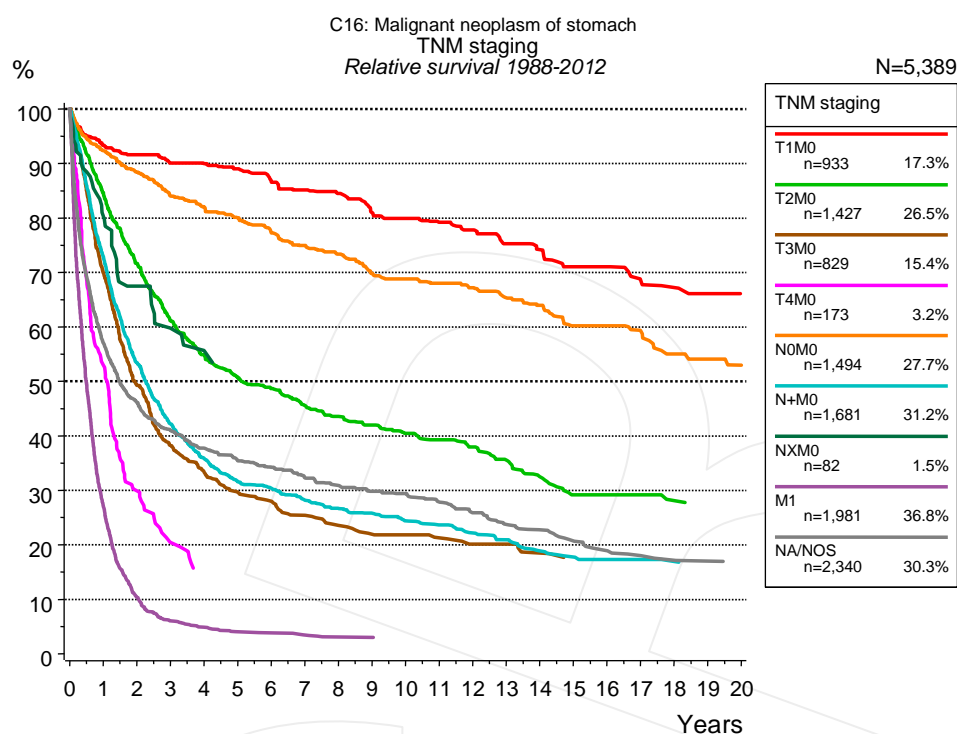
**Table 4b.** Observed (obs.) and relative (rel.) survival of patients with stomach cancer by UICC for period 1988-2012 (N=5,865).



**Figure 4c.** Relative survival of patients with stomach cancer by UICC. For 4,403 of 5,539 cases diagnosed between 1998 and 2012 valid data could be obtained for this item. For a total of 3,998 cases an evaluable classification was established. The grey line represents the subgroup of 1,541 patients with missing values regarding UICC (27.8% of 5,539 patients, the percent values of all other categories are related to n=3,998).

Years	UICC											
	IA n=692		IB n=525		II n=779		IIIA n=402		IV n=1,600		NA/NOS n=1,541	
	obs. %	rel. %	obs. %	rel. %	obs. %	rel. %	obs. %	rel. %	obs. %	rel. %	obs. %	rel. %
0	100.0	100.0	100.0	100.0	100.0	100.0	100.0	100.0	100.0	100.0	100.0	100.0
1	88.8	92.0	87.0	90.7	76.6	79.2	55.7	58.1	29.3	30.3	48.5	51.9
2	85.1	90.8	79.8	86.5	59.2	63.3	34.6	37.6	11.1	11.7	35.4	39.4
3	81.8	90.8	69.2	78.2	46.4	51.0	21.7	24.3	6.7	7.2	29.5	34.2
4	78.2	89.8	63.3	74.5	38.1	43.2	16.7	19.1	5.1	5.5	26.1	31.3
5	74.9	89.1	55.7	68.7	33.7	39.4	13.8	16.3	3.9	4.3	23.6	29.1
6	72.1	89.0	52.2	67.7	30.8	37.2	13.0	15.3	3.9	4.3	21.8	27.7
7	67.2	86.0	47.3	64.4	26.6	33.1			3.7	4.1	20.1	26.1
8	65.4	86.0	42.5	60.6	24.9	31.9					19.1	25.3
9	60.7	83.2	36.7	54.9	22.1	29.6					18.2	24.7
10	57.4	81.3	35.0	53.7	21.6	29.3					17.0	23.3
11	53.4	78.5	35.0	53.7	20.4	28.5					15.2	21.6
12	52.4	78.5	29.3	51.1	19.7	28.3					14.5	21.0
13	48.6	76.3	27.8	48.8	18.6	27.6						

**Table 4d.** Observed (obs.) and relative (rel.) survival of patients with stomach cancer by UICC for period 1998-2012 (N=3,998).



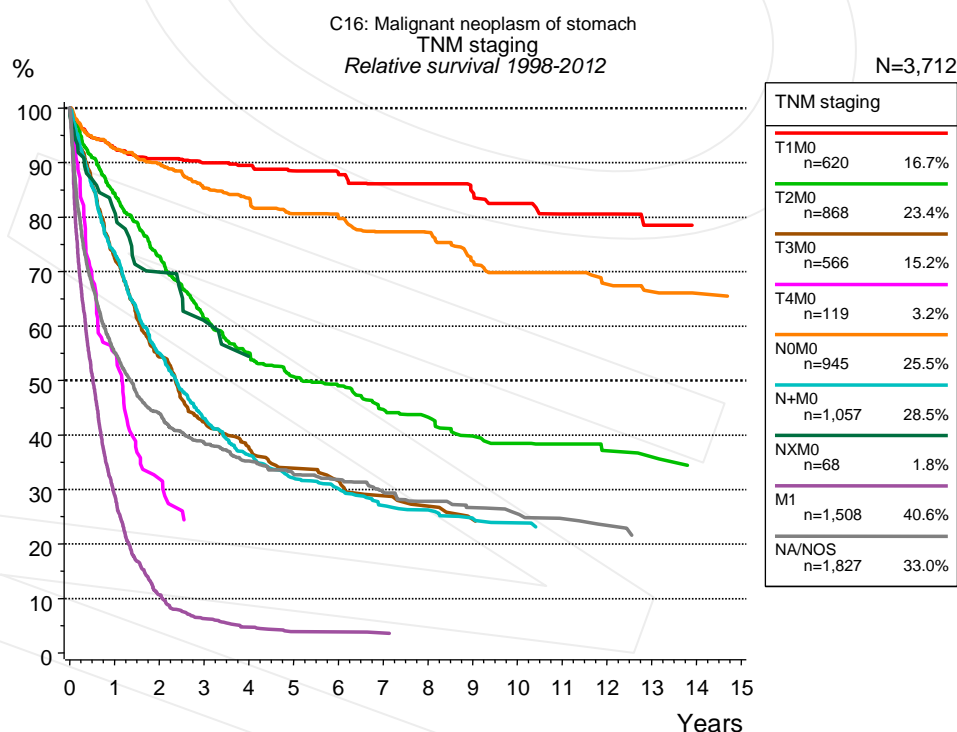
**Figure 4e.** Relative survival of patients with stomach cancer by TNM staging. For 6,340 of 7,729 cases diagnosed between 1988 and 2012 valid data could be obtained for this item. For a total of 5,389 cases an evaluable classification was established. The accumulated percentage exceeds the 100% value because patients are potentially considered in more than one subgroup. The grey line represents the subgroup of 2,340 patients with missing values regarding TNM staging (30.3% of 7,729 patients, the percent values of all other categories are related to n=5,389).

		TNM staging													
		T1M0 n=933		T2M0 n=1,427		T3M0 n=829		T4M0 n=173		N0M0 n=1,494		N+M0 n=1,681		NXM0 n=82	
Years		obs. %	rel. %	obs. %	rel. %	obs. %	rel. %	obs. %	rel. %	obs. %	rel. %	obs. %	rel. %	obs. %	rel. %
0		100.0	100.0	100.0	100.0	100.0	100.0	100.0	100.0	100.0	100.0	100.0	100.0	100.0	100.0
1		90.4	93.4	81.4	84.4	67.4	69.8	51.2	53.0	89.2	92.3	70.3	72.8	77.5	80.1
2		86.2	91.6	66.8	71.6	46.1	49.2	28.4	29.9	82.7	88.4	50.0	53.4	62.6	67.5
3		81.9	90.1	55.1	61.1	34.9	38.2	18.5	20.4	75.9	84.0	38.4	42.2	52.4	59.7
4		79.3	90.0	47.8	54.8	29.6	33.2	13.9	15.1	71.7	82.0	31.7	35.9	46.6	55.6
5		76.0	89.0	42.5	50.7	25.6	29.6			67.6	80.0	27.1	31.6	44.3	53.5
6		71.8	86.7	39.4	48.7	23.7	28.0			63.2	77.2	25.3	30.4	44.3	53.5
7		68.3	85.2	35.5	45.6	21.1	25.4			59.2	74.9	22.8	28.2	44.3	53.5
8		65.4	84.5	32.8	43.5	18.7	23.5			56.0	73.3	20.9	26.7	44.3	53.5
9		60.9	81.0	30.4	42.0	17.2	21.9			51.5	69.8	19.5	25.8	44.3	53.5
10		59.1	79.9	28.2	40.4	16.9	21.8			49.8	68.8	17.9	24.4	44.3	53.5
11		56.1	79.2	26.4	39.3	15.6	21.2			47.0	68.0	16.7	23.7	44.3	53.5
12		53.9	77.8	24.5	37.9	14.2	20.1			45.0	67.2	15.2	22.2		
13		50.2	75.3	22.2	35.6	14.2	20.1			42.2	65.3	14.0	20.9		
14		48.0	74.2	19.4	32.5	12.5	18.5			39.9	64.0	12.1	18.9		
15		44.7	71.0	16.8	29.2	11.3	17.6			36.1	60.2	11.2	17.8		
16		43.2	71.0	16.8	29.2	11.3	17.2			35.5	60.2	10.7	17.3		
17		40.2	68.7	16.8	29.2					33.3	59.2	10.7	17.3		
18		38.8	67.3	14.9	28.1					30.1	55.0	9.8	16.9		
19		36.9	66.1	14.3	27.2					28.9	54.1	9.3	16.5		
20		35.4	66.0							27.2	53.0				



cont'd Years	TNM staging			
	M1 n=1,981		NA/NOS n=2,340	
	obs. %	rel. %	obs. %	rel. %
0	100.0	100.0	100.0	100.0
1	26.2	27.2	53.5	57.0
2	9.8	10.3	41.4	46.2
3	5.6	6.0	35.3	41.0
4	4.4	4.9	31.2	37.7
5	3.6	4.0	28.3	35.5
6	3.4	3.8	26.2	34.2
7	3.0	3.4	23.8	32.3
8	2.7	3.1	22.0	30.9
9	2.7	3.0	20.5	29.8
10	2.5	2.8	19.6	29.4
11			18.0	27.9
12			16.0	25.9
13			14.3	23.7
14			13.2	22.8
15			11.8	20.7
16			10.5	18.9
17			9.7	18.0
18			9.1	17.2
19			8.6	17.0

**Table 4f.** Observed (obs.) and relative (rel.) survival of patients with stomach cancer by TNM staging for period 1988-2012 (N=8,600).

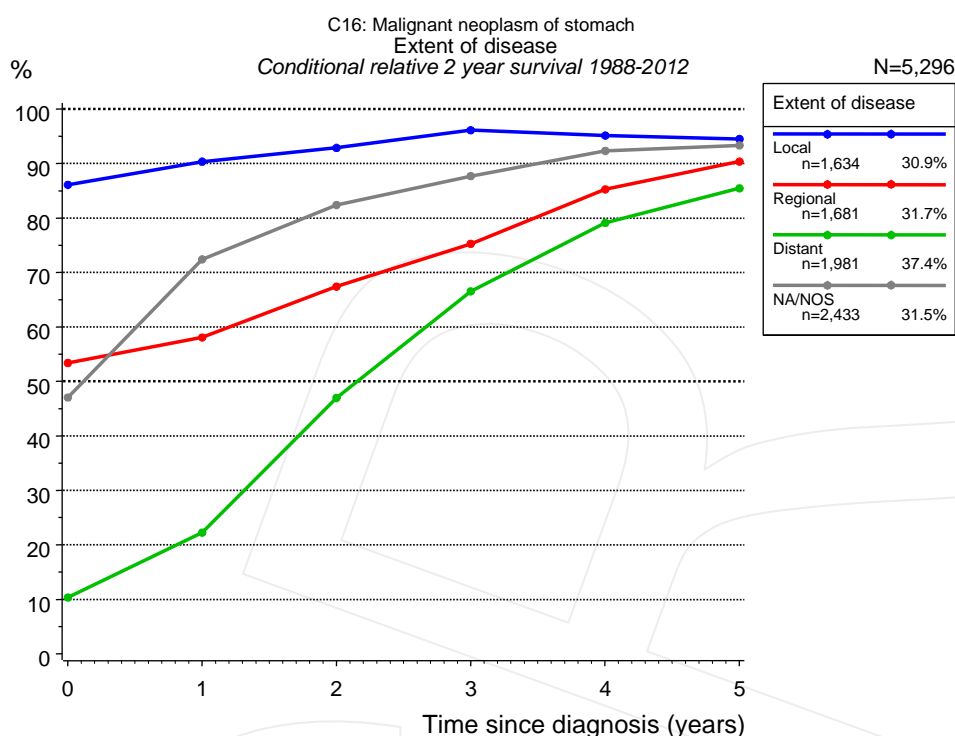


**Figure 4g.** Relative survival of patients with stomach cancer by TNM staging. For 4,403 of 5,539 cases diagnosed between 1998 and 2012 valid data could be obtained for this item. For a total of 3,712 cases an evaluable classification was established. The accumulated percentage exceeds the 100% value because patients are potentially considered in more than one subgroup. The grey line represents the subgroup of 1,827 patients with missing values regarding TNM staging (33.0% of 5,539 patients, the percent values of all other categories are related to n=3,712).

TNM staging															
	T1M0 n=620		T2M0 n=868		T3M0 n=566		T4M0 n=119		N0M0 n=945		N+M0 n=1,057		NXM0 n=68		
Years	obs. %	rel. %	obs. %	rel. %	obs. %	rel. %	obs. %	rel. %	obs. %	rel. %	obs. %	rel. %	obs. %	rel. %	
0	100.0	100.0	100.0	100.0	100.0	100.0	100.0	100.0	100.0	100.0	100.0	100.0	100.0	100.0	
1	89.7	92.7	81.3	84.4	70.0	72.3	53.7	55.1	89.3	92.5	71.1	73.5	78.9	81.0	
2	85.0	90.7	67.9	72.8	51.2	54.3	30.7	32.0	83.8	89.8	51.7	55.0	65.5	69.9	
3	81.3	90.0	55.3	61.4	39.0	42.3			76.9	85.3	39.3	43.0	54.5	61.0	
4	78.5	89.5	47.9	55.1	33.9	37.5			72.7	83.4	32.3	36.3			
5	74.6	88.5	42.4	50.7	30.1	33.9			67.6	80.6	27.7	32.1			
6	71.5	87.9	39.5	49.0	27.6	31.6			64.6	79.8	25.4	30.1			
7	67.8	86.1	34.6	44.7	24.7	28.9			60.2	77.3	22.1	27.0			
8	66.3	86.1	32.5	43.3	22.6	26.9			57.9	77.2	21.0	26.3			
9	61.8	84.5	28.5	39.8	20.2	24.5			51.9	71.9	19.0	24.7			
10	59.1	82.5	27.1	38.5	19.4	23.9			49.5	69.8	18.1	23.9			
11	54.6	80.6	26.0	38.3	19.4	23.7			47.0	69.8	17.0	23.1			
12	53.5	80.6	23.8	37.1					43.8	67.6	17.0	23.1			
13	49.5	78.5	22.9	36.0					41.4	66.3					
14			20.6	33.9					39.4	66.0					

TNM staging				
Years	M1 n=1,508		NA/NOS n=1,827	
	obs. %	rel. %	obs. %	rel. %
0	100.0	100.0	100.0	100.0
1	28.0	28.9	51.6	55.1
2	10.1	10.7	39.2	43.9
3	5.9	6.3	33.0	38.5
4	4.4	4.7	28.9	35.2
5	3.5	3.9	26.0	32.8
6	3.5	3.8	24.2	31.8
7	3.3	3.6	21.6	29.5
8			19.7	27.9
9			18.2	26.7
10			17.1	25.5
11			15.8	24.7
12			14.7	23.4

**Table 4h.** Observed (obs.) and relative (rel.) survival of patients with stomach cancer by TNM staging for period 1998-2012 (N=5,751).

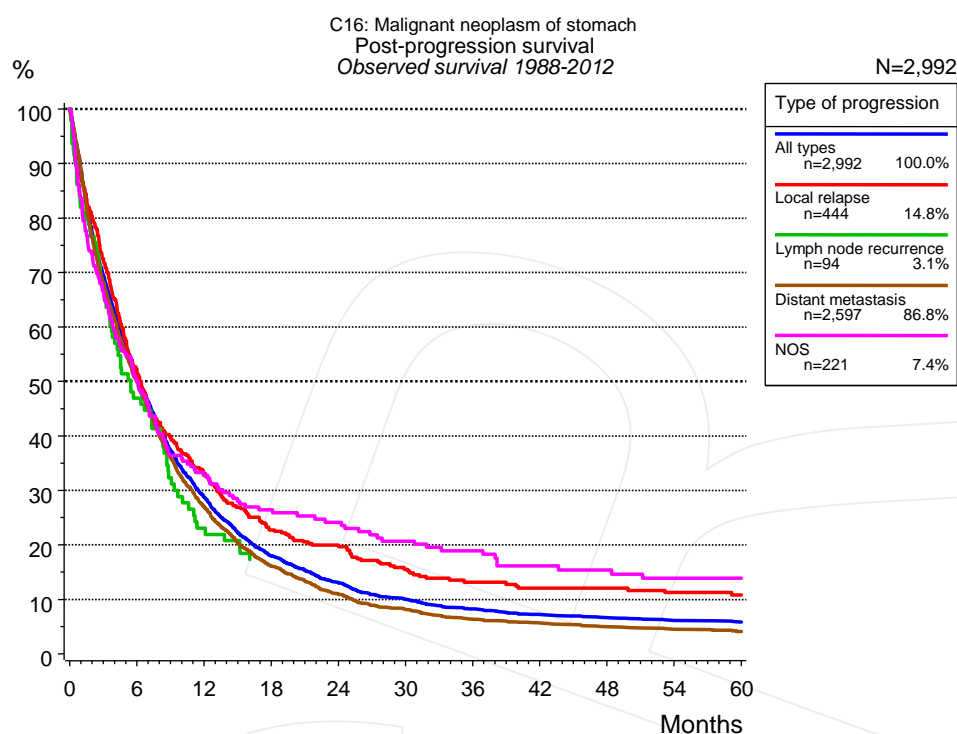


**Figure 4i.** Conditional relative 2-year survival of patients with stomach cancer by extent of disease. For 6,340 of 7,729 cases diagnosed between 1988 and 2012 valid data could be obtained for this item. For a total of 5,296 cases an evaluable classification was established. The grey line represents the subgroup of 2,433 patients with missing values regarding extent of disease (31.5% of 7,729 patients, the percent values of all other categories are related to n=5,296).

Years	Extent of disease							
	Local		Regional		Distant		NA/NOS	
	n	Cond. surv. % 2 yrs	n	Cond. surv. % 2 yrs	n	Cond. surv. % 2 yrs	n	Cond. surv. % 2 yrs
0	1,634	86.1	1,681	53.4	1,981	10.3	2,433	47.1
1	1,357	90.3	1,124	58.1	483	22.3	1,240	72.4
2	1,161	92.9	746	67.4	161	47.0	887	82.4
3	984	96.1	522	75.2	80	66.5	693	87.7
4	849	95.1	395	85.3	57	79.1	528	92.3
5	735	94.5	313	90.4	43	85.4	427	93.3

**Table 4j.** Conditional relative 2-year survival of patients with stomach cancer by extent of disease for period 1988-2012 (N=5,296).

Conditional relative survival rates refer to the relative survival probability, in this case for 2 years after cancer diagnosis, compared to the age- and sex-matched population (=100%) under the condition of being alive for a certain time period (x-axis in Figure 4g). The results illustrate to what extent the cancer induced mortality of particular subgroups declines in the subsequent years after detection of the malignancy. For instance, according to the presented survival statistics, patients in the subgroup extent of disease="Local", who are alive at least 3 years after cancer diagnosis, the conditional relative 2-year survival rate is 96.1% (n=984).



**Figure 5a.** Observed post-progression survival of 2,992 patients with stomach cancer diagnosed between 1988 and 2012 (incl. M1). These 2,992 patients with documented progression events during their course of disease represent 38.7% of the totally 7,729 evaluated cases. Patients with cancer relapse documented via death certificates only were excluded (n=1,400, 18.1%). Multiple progression types on different sites are included in the evaluation even when not occurring synchronously. The NOS (not otherwise specified) class is included under the condition, that it is the one and only progression type during the course of disease.

Medical record documentation often lacks the linguistic severity to distinguish between local relapse, regional lymph node metastasis and distant spread in solid cancers. Frequently, the statement “not specified” is the only information in registries regarding relapse of the disease. The category “All types” denotes all cases who suffered from at least one relapse during the course of disease (incl. primary M1-status). Although, the real number of relapsed patients is likely to be much higher. The accumulated percentage of patients with local relapse or distant metastasis exceeds the 100% value because patients are potentially considered in more than one subgroup.

Months	Type of progression				
	All types n=2,992	Local relapse n=444	Lymph node recurrence n=94	Distant metastasis n=2,597	NOS n=221
	%	%	%	%	%
0	100.0	100.0	100.0	100.0	100.0
12	28.7	33.1	23.1	26.9	32.7
24	13.0	19.9		10.9	24.1
36	8.2	13.1		6.4	18.9
48	6.6	12.0		4.9	15.4
60	5.8	10.8		4.1	13.8

**Table 5b.** Observed post-progression survival of patients with stomach cancer for period 1988-2012 (N=2,992).

**Shortcuts**

AS	Assembled survival chart (observed, expected, relative)
CS	Conditional survival
DCO	Death certificate only. The death certificate provides the only notification to the registry.
MCR	Munich Cancer Registry, Germany (Tumorregister München)
NA	Not available
NCI	National Cancer Institute, USA
NOS	Not otherwise specified
OS	Observed/overall survival (Kaplan-Meier estimate)
PPS	Post-progression survival
RS	Relative Survival. Ratio of observed and expected survival (derived from the normal population)
SEER	Surveillance, Epidemiology, and End Results, USA
TTP	Time to progression Date of entry: Date of diagnosis Event (Progression): First local recurrence, lymph node relapse or distant metastasis, unspecified recurrence First all-cause recurrence is illustrated by survival curves (Kaplan-Meier estimate). First local recurrence, lymph node relapse or distant metastasis are depicted cumulatively, where applicable ("reverse" Kaplan-Meier estimate).
UICC	Union for International Cancer Control, Geneva

**Recommended Citation**

Munich Cancer Registry. Survival C16: Stomach cancer [Internet]. 2014 [updated 2014 Mar 25; cited 2014 May 1]. Available from: [http://www.tumorregister-muenchen.de/en/facts/surv/surv\\_C16\\_\\_E.pdf](http://www.tumorregister-muenchen.de/en/facts/surv/surv_C16__E.pdf)

**Copyright**

The content of the public web site provided by the Munich Cancer Registry is available worldwide and free of charge. All documents are free to download, utilize, copy, print-out and distribute, providing that the MCR is referenced.

**Disclaimer**

The Munich Cancer Registry reserves the right to not be responsible for the topicality, correctness, completeness or quality of the information provided. Liability claims regarding damage caused by the use of any information provided, including any kind of information which is incomplete or incorrect, will therefore be rejected.

### Index of figures and tables

Fig./Tbl.		Page
1a	Relative survival by period of diagnosis (chart)	2
1b	Survival by period of diagnosis (table)	3
2a	Survival by gender (chart)	3
2b	Survival by gender (table)	4
3a	Relative survival by age category (chart)	4
3b	Observed survival by age category (chart)	5
3c	Survival by age category (table)	5
4a	Relative survival by UICC 1988+ (chart)	6
4b	Survival by UICC 1988+ (table)	6
4c	Relative survival by UICC 1998+ (chart)	7
4d	Survival by UICC 1998+ (table)	7
4e	Relative survival by TNM staging 1988+ (chart)	8
4f	Survival by TNM staging 1988+ (table)	8
4g	Relative survival by TNM staging 1998+ (chart)	9
4h	Survival by TNM staging 1998+ (table)	10
4i	Conditional survival by extent of disease (chart)	11
4j	Conditional survival by extent of disease (table)	11
5a	Observed post-progression survival (chart)	12
5b	Observed post-progression survival (table)	12