

Munich Cancer Registry



- ▶ Baseline statistics
- ▶ Selection Matrix
- ▶ Homepage
- ▶ *Deutsch*

Munich Cancer Registry at Munich Cancer Center
Marchioninstr. 15
Munich, 81377
Germany

<http://www.tumorregister-muenchen.de/en>

Cancer statistics: Survival

C18-C21: Colorectal cancer

Year of diagnosis	1988-2012
Patients	51,200
Diseases	52,531
Cases evaluated	30,559
Creation date	03/25/2014
Export date	02/12/2014
Population	4.5 m



http://www.tumorregister-muenchen.de/en/facts/surv/surv_C1821E.pdf

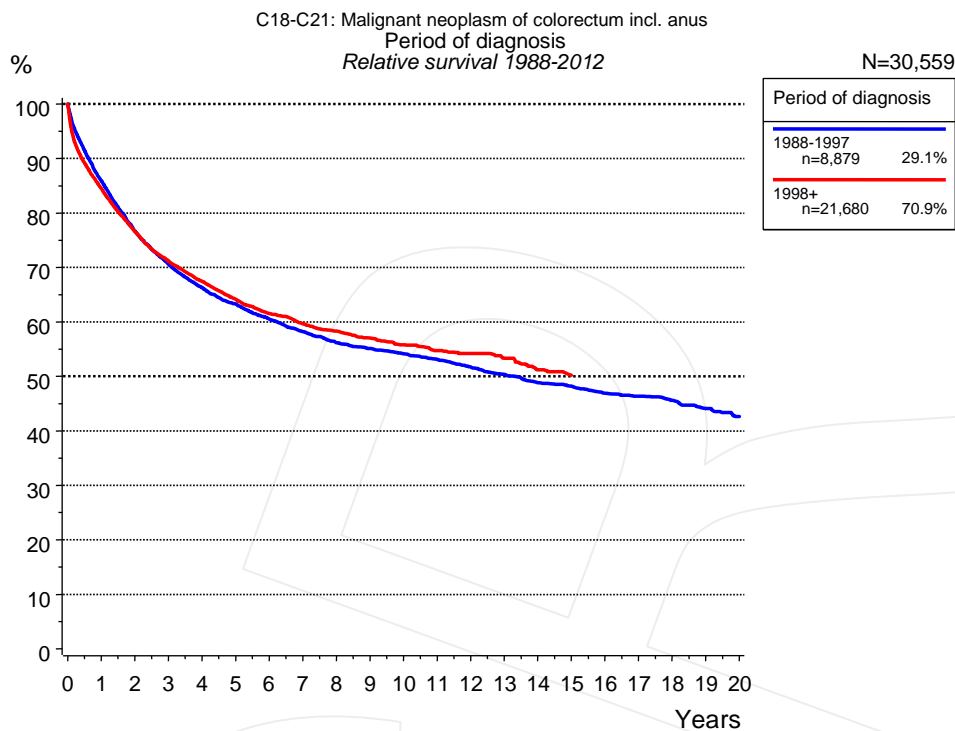


Figure 1a. Relative survival of patients with colorectal cancer by period of diagnosis. Included in the evaluation are 30,559 cases diagnosed between 1988 and 2012.

The presented survival curves are derived from clinical records with valid follow-up informations, which means that death certificate cases (DCO) cases are omitted from the analysis. With this one restriction, the MCR has provided population-based statistics since 1988, collecting data on all cancer cases in the region of southern Bavaria. Historical data of previous time periods can be heavily selected, therefore, univariate survival comparisons of the presented time periods must be carefully considered. Nonetheless, all calculable survival curves are depicted to facilitate the comparison of long time follow-up analyses of relative survival between particular cancers.

Years	Period of diagnosis			
	1988-1997 n=8,879		1998+ n=21,680	
	obs. %	rel. %	obs. %	rel. %
0	100.0	100.0	100.0	100.0
1	82.8	85.9	81.3	84.5
2	71.3	76.6	71.3	76.6
3	63.6	70.7	64.1	71.1
4	57.6	66.3	58.7	67.4
5	53.1	63.3	54.0	64.2
6	49.0	60.5	50.1	61.5
7	45.5	58.2	47.0	59.7
8	42.4	56.2	44.3	58.3
9	40.2	55.1	41.8	57.0
10	38.1	54.2	39.5	55.8
11	36.0	53.1	37.4	54.7
12	33.8	51.7	35.7	54.2
13	31.8	50.4	33.7	53.3
14	29.8	48.9	31.1	51.2
15	28.3	48.2		
16	26.6	46.9		
17	25.4	46.4		
18	24.0	45.6		
19	22.2	44.1		
20	20.7	42.6		

Table 1b. Observed (obs.) and relative (rel.) survival of patients with colorectal cancer by period of diagnosis for period 1988-2012 (N=30,559).

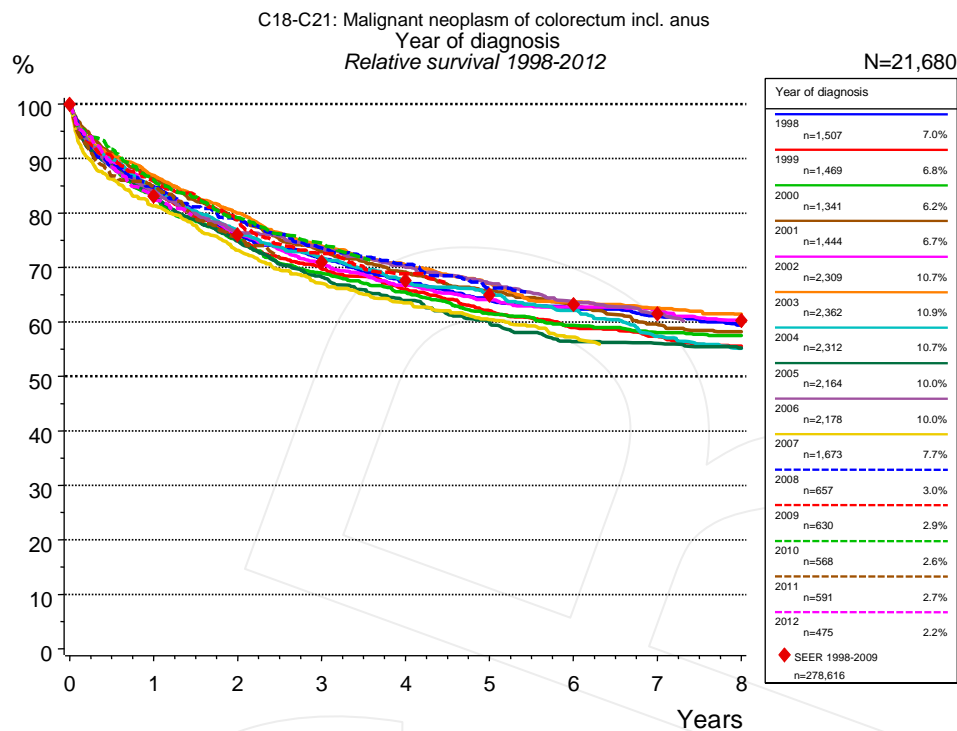


Figure 1c. Relative survival of patients with colorectal cancer by year of diagnosis. Included in the evaluation are 21,680 cases diagnosed between 1998 and 2012.

The survival results of the SEER program (Surveillance, Epidemiology, and End Results) of the American National Cancer Institute (NCI) are summarized as the period of diagnosis from 1998 to 2009, and are represented by red diamonds in order to facilitate comparisons between MCR and SEER.

Years	Year of diagnosis													
	1998		1999		2000		2001		2002		2003		2004	
	n=1,507		n=1,469		n=1,341		n=1,444		n=2,309		n=2,362		n=2,312	
	obs. %	rel. %	obs. %	rel. %	obs. %	rel. %	obs. %	rel. %	obs. %	rel. %	obs. %	rel. %	obs. %	rel. %
0	100.0	100.0	100.0	100.0	100.0	100.0	100.0	100.0	100.0	100.0	100.0	100.0	100.0	100.0
1	81.5	84.8	80.6	84.0	79.8	83.0	83.1	86.3	81.4	84.6	83.8	86.9	81.4	84.5
2	70.4	76.0	69.8	75.2	69.8	75.1	73.4	78.8	70.7	76.2	74.6	79.9	71.3	76.5
3	64.1	71.6	62.4	69.7	61.9	68.9	65.7	72.9	63.3	70.6	66.8	73.9	64.6	71.7
4	58.3	67.3	57.0	66.0	56.9	65.4	60.4	69.1	57.9	66.7	61.6	70.4	58.8	67.5
5	53.8	64.4	51.7	62.0	51.7	61.5	55.7	65.8	53.7	64.1	56.7	67.0	55.0	65.4
6	50.4	62.4	47.5	59.0	48.4	59.4	51.7	63.0	51.0	62.7	52.0	63.6	50.5	62.1
7	47.6	61.0	44.7	57.4	45.7	58.0	47.5	59.6	48.5	61.9	49.4	62.5	44.8	57.4
8	44.8	59.4	42.0	55.6	44.1	57.5	45.1	58.2	45.6	60.3	46.7	61.4	41.5	55.2

cont'd Years	Year of diagnosis													
	2005		2006		2007		2008		2009		2010		2011	
	n=2,164		n=2,178		n=1,673		n=657		n=630		n=568		n=591	
	obs. %	rel. %	obs. %	rel. %	obs. %	rel. %	obs. %	rel. %	obs. %	rel. %	obs. %	rel. %	obs. %	rel. %
0	100.0	100.0	100.0	100.0	100.0	100.0	100.0	100.0	100.0	100.0	100.0	100.0	100.0	100.0
1	80.2	83.3	81.2	84.0	78.2	81.3	81.4	84.8	82.9	85.8	83.1	86.1	81.9	84.9
2	69.9	74.8	71.6	76.4	68.1	73.1	73.1	78.7	73.7	78.7	73.8	79.1	70.5	75.4
3	61.8	68.3	67.0	73.6	60.3	67.1	66.1	73.6	65.6	72.6	67.0	74.4		
4	56.0	64.0	61.8	70.1	55.2	63.5	61.5	70.7	60.2	68.8				
5	51.0	60.0	57.4	67.1	50.8	60.4	55.5	66.2						
6	46.1	56.4	52.8	63.8	46.6	57.2								
7	44.4	56.1	49.2	61.6										
8	42.2	55.2												

Year of diagnosis		
<i>cont'd</i>		
2012		
n=475		
Years	obs. %	rel. %
0	100.0	100.0
1	79.6	82.4

Table 1d. Observed (obs.) and relative (rel.) survival of patients with colorectal cancer by year of diagnosis for period 1998-2012 (N=21,680).

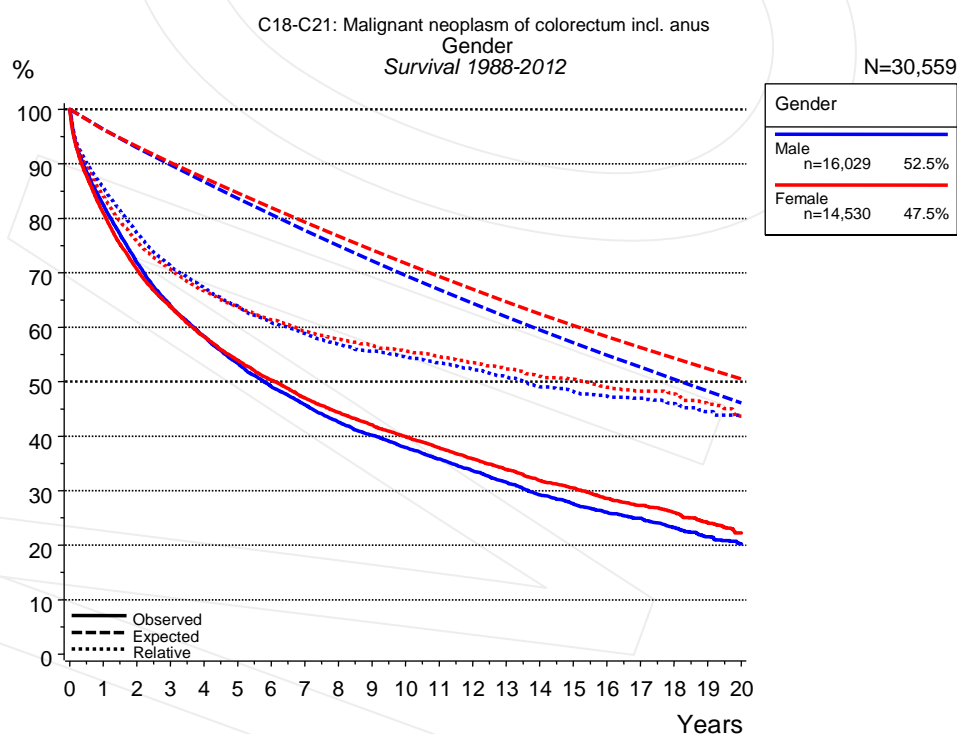


Figure 2a. Survival of patients with colorectal cancer by gender. Included in the evaluation are 30,559 cases diagnosed between 1988 and 2012.

Years	Gender			
	Male n=16,029		Female n=14,530	
	obs. %	rel. %	obs. %	rel. %
0	100.0	100.0	100.0	100.0
1	82.5	85.6	80.9	84.0
2	71.8	77.3	70.6	75.8
3	64.0	71.2	63.7	70.6
4	58.3	67.3	58.3	66.7
5	53.4	63.9	54.0	63.8
6	49.1	60.9	50.3	61.4
7	45.8	58.8	47.0	59.3
8	42.6	56.8	44.4	57.8
9	40.2	55.6	42.1	56.7
10	37.9	54.6	39.9	55.7
11	35.8	53.5	37.9	54.6
12	33.6	52.2	35.8	53.5
13	31.6	50.9	33.9	52.3
14	29.2	49.1	31.8	51.0
15	27.5	48.2	30.5	50.5
16	26.0	47.4	28.6	49.0
17	24.9	47.0	27.3	48.3
18	23.2	46.0	26.0	47.7
19	21.6	44.5	24.1	45.9
20	20.3	43.8	22.2	43.7

Table 2b. Observed (obs.) and relative (rel.) survival of patients with colorectal cancer by gender for period 1988-2012 (N=30,559).

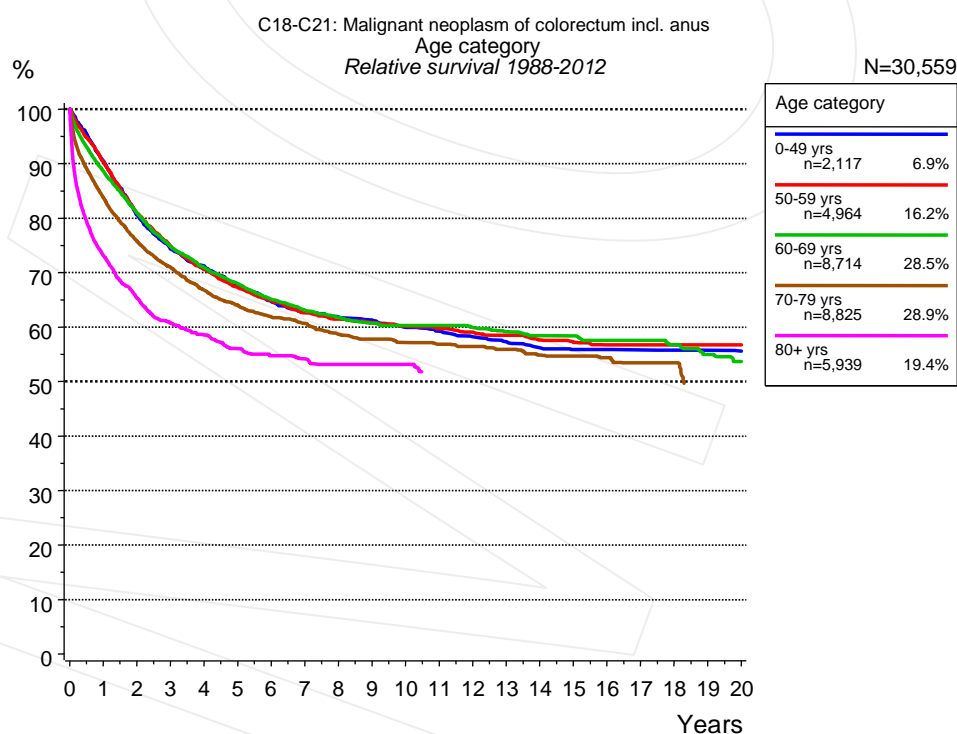


Figure 3a. Relative survival of patients with colorectal cancer by age category. Included in the evaluation are 30,559 cases diagnosed between 1988 and 2012.

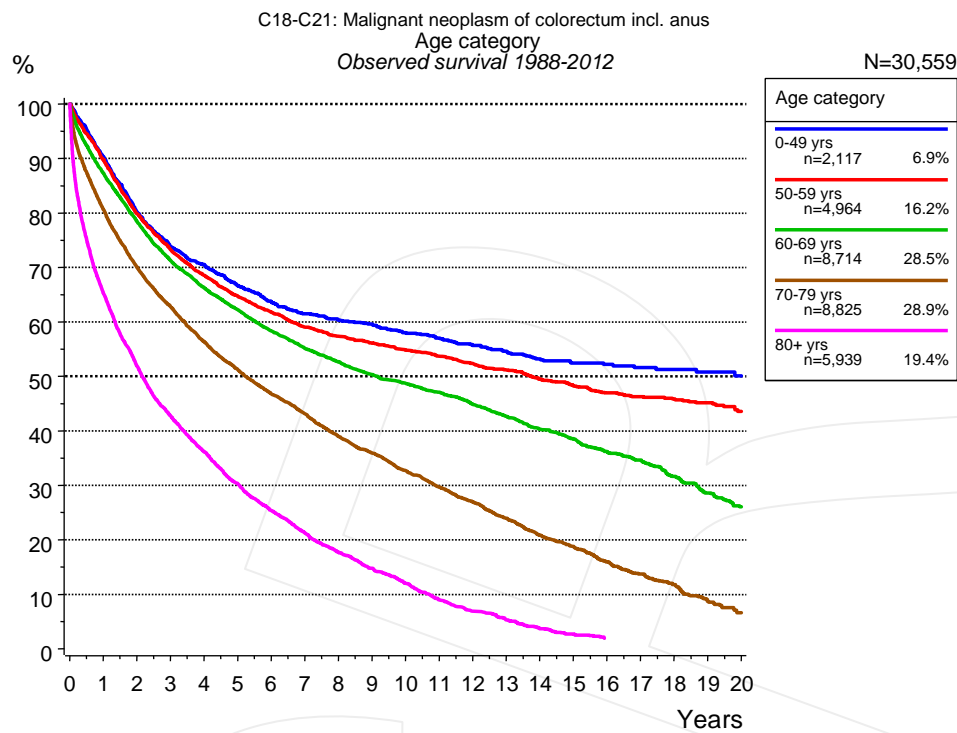


Figure 3b. Observed survival of patients with colorectal cancer by age category. Included in the evaluation are 30,559 cases diagnosed between 1988 and 2012.

Years	Age category									
	0-49 yrs n=2,117		50-59 yrs n=4,964		60-69 yrs n=8,714		70-79 yrs n=8,825		80+ yrs n=5,939	
	obs. %	rel. %	obs. %	rel. %	obs. %	rel. %	obs. %	rel. %	obs. %	rel. %
0	100.0	100.0	100.0	100.0	100.0	100.0	100.0	100.0	100.0	100.0
1	90.3	90.5	89.8	90.4	87.3	88.6	80.7	83.8	65.3	73.2
2	80.2	80.5	79.9	81.0	78.4	80.9	70.1	75.8	52.0	65.3
3	73.8	74.4	73.3	74.8	71.3	74.8	62.8	71.0	42.8	60.7
4	70.5	71.2	68.5	70.6	66.2	70.9	56.4	66.8	36.2	58.5
5	66.6	67.5	64.7	67.3	62.3	68.0	51.3	64.0	30.4	56.0
6	63.7	64.7	61.8	64.8	58.3	65.1	46.8	61.9	25.4	54.7
7	61.5	62.8	59.0	62.6	55.1	63.1	43.1	60.6	21.3	54.2
8	60.3	61.8	57.3	61.5	52.7	61.8	39.0	58.7	17.8	53.1
9	59.6	61.3	56.1	60.8	50.3	60.7	35.9	57.8	14.8	53.1
10	58.0	60.0	54.8	60.1	48.7	60.3	32.7	57.2	12.0	53.1
11	57.0	59.2	53.7	59.7	47.1	60.3	29.7	56.9		
12	55.7	58.2	52.3	59.1	44.9	59.9	26.9	56.4		
13	54.6	57.3	51.1	58.5	42.7	59.2	23.9	55.9		
14	53.2	56.2	49.5	57.6	40.3	58.4	20.8	54.8		
15	52.4	55.9	48.2	57.2	38.4	58.4	18.8	54.7		
16	52.2	55.9	47.0	56.7	36.3	57.6	16.0	54.4		
17	51.6	55.8	46.3	56.7	34.6	57.6	13.7	53.4		
18	51.3	55.8	45.8	56.7	31.6	56.8	11.8	53.4		
19	50.8	55.8	45.1	56.7	28.6	55.0				
20	50.1	55.6	43.6	56.7	26.1	53.7				

Table 3c. Observed (obs.) and relative (rel.) survival of patients with colorectal cancer by age category for period 1988-2012 (N=30,559).

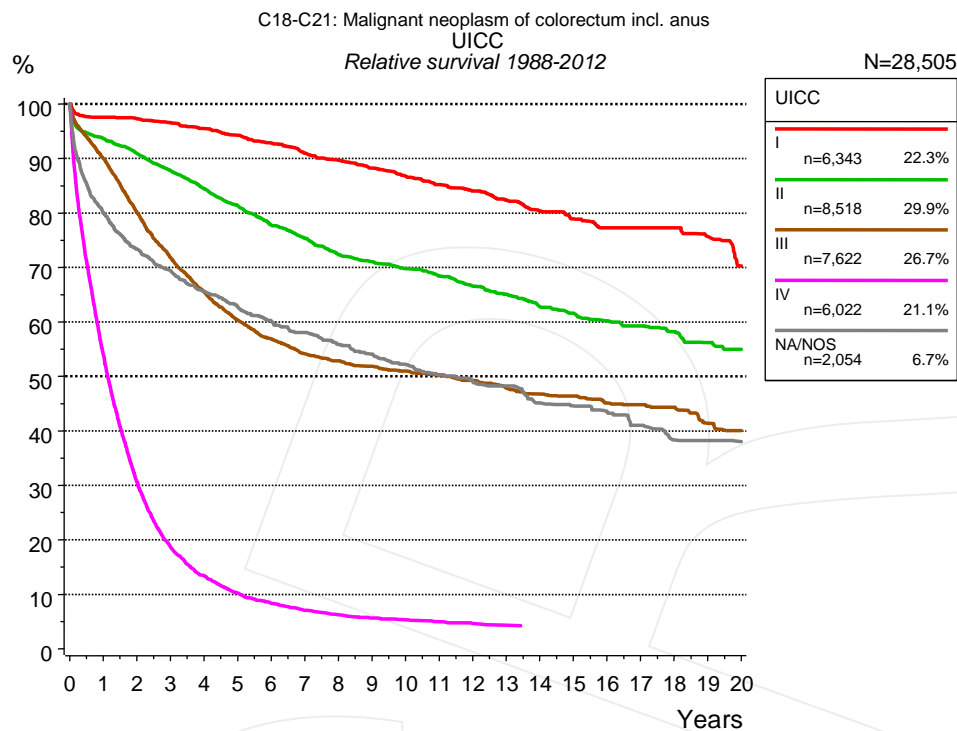


Figure 4a. Relative survival of patients with colorectal cancer by UICC. For 28,782 of 30,559 cases diagnosed between 1988 and 2012 valid data could be obtained for this item. For a total of 28,505 cases an evaluable classification was established. The grey line represents the subgroup of 2,054 patients with missing values regarding UICC (6.7% of 30,559 patients, the percent values of all other categories are related to n=28,505).

Years	UICC									
	I		II		III		IV		NA/NOS	
	n=6,343		n=8,518		n=7,622		n=6,022		n=2,054	
	obs. %	rel. %	obs. %	rel. %	obs. %	rel. %	obs. %	rel. %	obs. %	rel. %
0	100.0	100.0	100.0	100.0	100.0	100.0	100.0	100.0	100.0	100.0
1	94.6	97.5	89.8	93.6	86.8	90.0	52.0	53.8	76.2	80.0
2	91.2	97.3	83.9	90.9	74.6	80.0	28.8	30.6	67.2	73.4
3	87.6	96.6	78.0	87.8	64.8	71.8	17.1	18.6	61.5	69.4
4	83.8	95.4	72.3	84.4	57.2	65.5	12.0	13.4	56.4	65.6
5	80.1	94.2	67.1	81.4	51.1	60.4	8.9	10.2	52.3	62.8
6	76.1	92.8	61.8	77.8	46.6	56.9	7.1	8.3	48.6	60.1
7	72.1	91.0	57.6	75.3	43.0	54.2	5.9	7.0	45.6	58.1
8	68.7	89.7	53.3	72.4	40.6	52.8	5.1	6.2	42.4	55.9
9	65.2	88.2	50.4	71.0	38.6	51.8	4.5	5.6	39.6	54.1
10	61.9	86.8	47.6	69.8	36.7	51.0	4.1	5.3	37.0	52.2
11	58.9	85.2	44.9	68.4	35.0	50.2	3.8	5.0	34.3	50.3
12	55.9	84.0	42.0	66.5	33.2	49.3	3.3	4.6	32.3	49.0
13	52.8	82.4	39.5	65.1	31.1	47.8	3.0	4.3	30.8	48.3
14	49.6	80.3	36.7	62.8	29.4	46.7	2.9	4.2	27.7	45.2
15	47.0	78.9	34.7	61.6	28.2	46.4	2.9	4.2	26.3	44.6
16	44.4	77.3	32.6	60.2	26.4	45.1			24.9	43.6
17	43.1	77.3	31.0	59.2	25.5	44.8			22.7	41.0
18	41.4	77.3	29.1	58.2	24.2	44.4			20.2	38.4
19	38.9	75.7	26.9	56.2	21.6	41.4			19.6	38.2
20	34.8	70.3	25.4	55.0	20.5	40.1			18.5	38.1

Table 4b. Observed (obs.) and relative (rel.) survival of patients with colorectal cancer by UICC for period 1988-2012 (N=28,505).

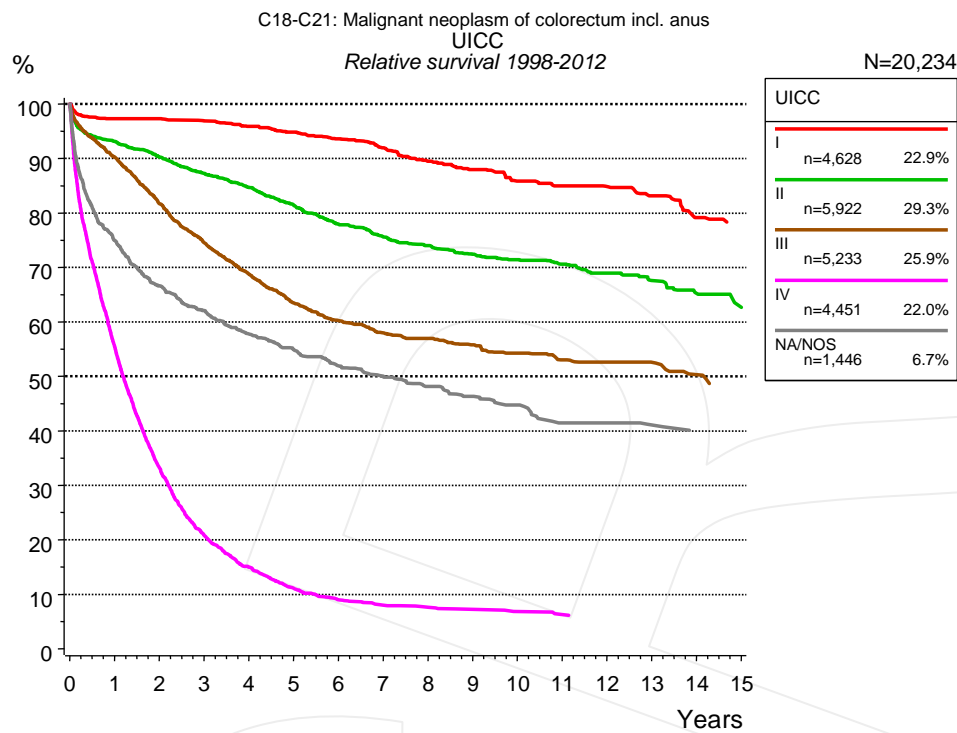


Figure 4c. Relative survival of patients with colorectal cancer by UICC. For 20,453 of 21,680 cases diagnosed between 1998 and 2012 valid data could be obtained for this item. For a total of 20,234 cases an evaluable classification was established. The grey line represents the subgroup of 1,446 patients with missing values regarding UICC (6.7% of 21,680 patients, the percent values of all other categories are related to n=20,234).

Years	UICC									
	I		II		III		IV		NA/NOS	
	n=4,628		n=5,922		n=5,233		n=4,451		n=1,446	
	obs. %	rel. %	obs. %	rel. %	obs. %	rel. %	obs. %	rel. %	obs. %	rel. %
0	100.0	100.0	100.0	100.0	100.0	100.0	100.0	100.0	100.0	100.0
1	94.4	97.3	89.2	93.1	87.0	90.2	53.5	55.4	71.2	74.9
2	91.3	97.3	83.2	90.2	76.2	81.7	31.3	33.2	60.9	66.6
3	87.9	96.9	77.5	87.2	67.3	74.5	19.2	20.8	55.0	62.1
4	84.2	95.9	72.5	84.7	60.1	68.8	13.5	15.0	49.7	57.8
5	80.7	94.8	67.2	81.5	53.8	63.5	9.8	11.1	45.9	54.9
6	76.8	93.6	62.0	77.9	49.4	60.2	7.8	9.0	42.4	51.9
7	72.8	92.0	57.9	75.5	46.1	57.9	6.8	8.0	39.9	50.1
8	68.4	89.5	54.7	74.0	44.0	57.0	6.4	7.6	37.3	48.1
9	64.9	87.9	51.4	72.4	41.5	55.8	5.9	7.2	35.1	46.3
10	61.0	85.9	48.8	71.4	39.2	54.3	5.4	6.8	33.0	44.7
11	58.6	85.0	46.3	70.6	36.8	53.0	4.9	6.3	29.6	41.4
12	56.1	84.8	43.6	68.9	35.7	52.6	4.7	6.1	28.8	41.4
13	52.8	83.1	40.8	67.6	34.0	52.6	4.7	5.9	27.8	41.1
14	48.1	79.1	37.8	65.2	31.4	50.3			26.3	39.8

Table 4d. Observed (obs.) and relative (rel.) survival of patients with colorectal cancer by UICC for period 1998-2012 (N=20,234).

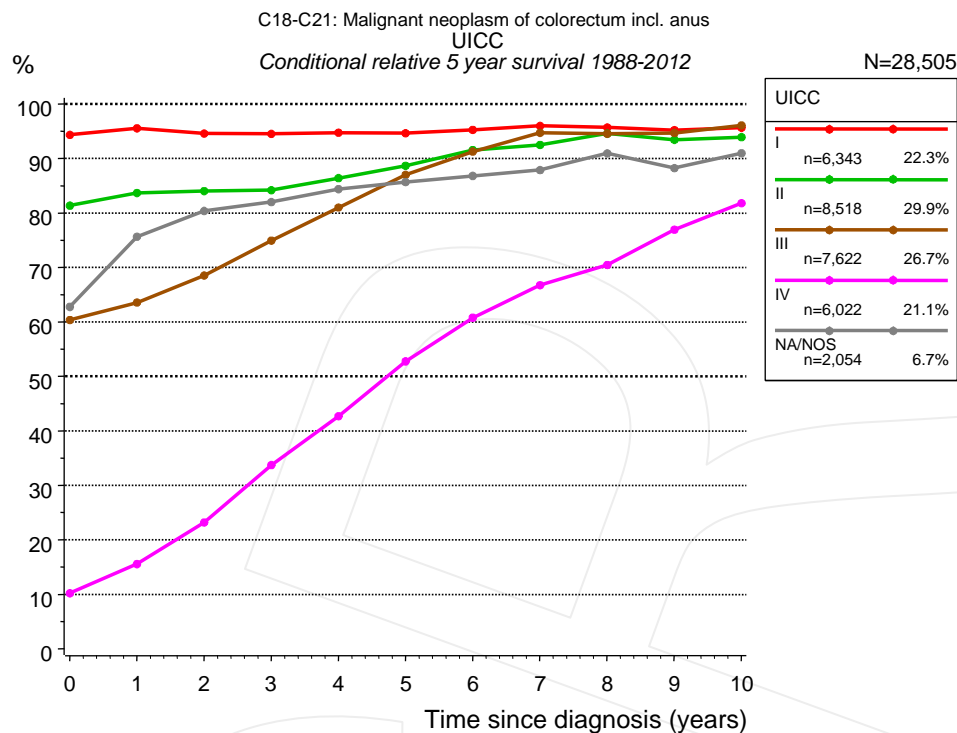


Figure 4e. Conditional relative 5-year survival of patients with colorectal cancer by UICC. For 28,782 of 30,559 cases diagnosed between 1988 and 2012 valid data could be obtained for this item. For a total of 28,505 cases an evaluable classification was established. The grey line represents the subgroup of 2,054 patients with missing values regarding UICC (6.7% of 30,559 patients, the percent values of all other categories are related to n=28,505).

UICC										
Years	I		II		III		IV		NA/NOS	
	n	Cond. surv. % 5 yrs	n	Cond. surv. % 5 yrs	n	Cond. surv. % 5 yrs	n	Cond. surv. % 5 yrs	n	Cond. surv. % 5 yrs
0	6,343	94.3	8,518	81.4	7,622	60.4	6,022	10.2	2,054	62.8
1	5,725	95.5	7,282	83.7	6,301	63.6	2,917	15.6	1,500	75.7
2	5,106	94.6	6,365	84.0	5,016	68.5	1,468	23.2	1,266	80.4
3	4,494	94.5	5,481	84.2	3,969	74.9	769	33.7	1,107	82.0
4	3,897	94.7	4,591	86.4	3,153	81.0	467	42.7	943	84.4
5	3,292	94.6	3,862	88.7	2,469	87.0	292	52.8	826	85.7
6	2,776	95.3	3,190	91.6	1,991	91.3	206	60.8	715	86.8
7	2,408	96.0	2,746	92.5	1,674	94.7	140	66.8	621	87.9
8	2,111	95.7	2,317	94.6	1,440	94.5	106	70.5	528	90.9
9	1,817	95.2	2,009	93.4	1,236	94.7	77	76.9	449	88.2
10	1,530	95.7	1,713	93.9	1,045	96.1	63	81.8	383	91.0

Table 4f. Conditional relative 5-year survival of patients with colorectal cancer by UICC for period 1988-2012 (N=28,505).

Conditional relative survival rates refer to the relative survival probability, in this case for 5 years after cancer diagnosis, compared to the age- and sex-matched population (=100%) under the condition of being alive for a certain time period (x-axis in Figure 4c). The results illustrate to what extent the cancer induced mortality of particular subgroups declines in the subsequent years after detection of the malignancy. For instance, according to the presented survival statistics, patients in the subgroup UICC="I", who are alive at least 3 years after cancer diagnosis, the conditional relative 5-year survival rate is 94.5% (n=4,494).

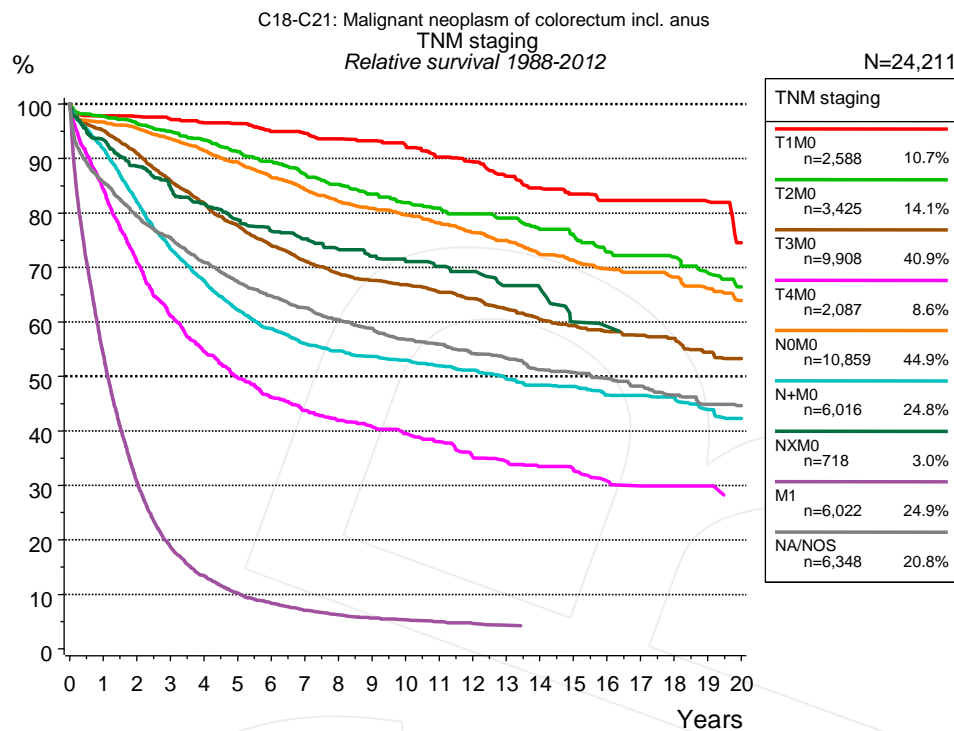


Figure 4g. Relative survival of patients with colorectal cancer by TNM staging. For 28,782 of 30,559 cases diagnosed between 1988 and 2012 valid data could be obtained for this item. For a total of 24,211 cases an evaluable classification was established. The accumulated percentage exceeds the 100% value because patients are potentially considered in more than one subgroup. The grey line represents the subgroup of 6,348 patients with missing values regarding TNM staging (20.8% of 30,559 patients, the percent values of all other categories are related to n=24,211).

		TNM staging													
		T1M0 n=2,588		T2M0 n=3,425		T3M0 n=9,908		T4M0 n=2,087		N0M0 n=10,859		N+M0 n=6,016		NXM0 n=718	
Years		obs. %	rel. %	obs. %	rel. %	obs. %	rel. %	obs. %	rel. %	obs. %	rel. %	obs. %	rel. %	obs. %	rel. %
0		100.0	100.0	100.0	100.0	100.0	100.0	100.0	100.0	100.0	100.0	100.0	100.0	100.0	100.0
1		95.3	97.8	94.7	97.7	91.7	95.1	80.7	84.3	93.3	96.7	88.6	91.8	90.2	93.4
2		92.3	97.7	90.4	96.3	84.6	90.9	65.3	70.9	89.1	95.5	76.6	82.0	82.9	88.5
3		89.2	97.2	86.3	95.0	77.2	85.9	54.4	61.1	84.4	93.6	66.5	73.4	76.9	84.6
4		86.0	96.6	82.1	93.3	71.0	81.8	46.7	54.5	79.6	91.4	59.3	67.6	72.3	81.7
5		83.5	96.4	77.7	91.3	65.2	77.8	41.3	49.8	75.1	89.4	53.0	62.2	67.6	78.7
6		79.5	95.0	73.7	89.5	59.9	74.0	37.0	46.2	70.2	86.6	48.5	58.7	64.0	76.6
7		76.6	94.5	69.4	87.2	55.6	71.1	33.9	43.7	66.0	84.3	45.0	56.0	61.3	75.2
8		73.8	93.6	65.6	85.2	51.9	68.8	31.4	41.9	62.1	82.1	42.5	54.6	57.9	73.3
9		70.8	93.3	62.2	83.4	49.2	67.6	29.5	40.8	58.9	80.8	40.4	53.6	55.1	72.0
10		67.7	92.4	58.9	81.9	46.9	66.8	27.6	39.5	55.9	79.6	38.7	52.9	52.5	71.1
11		64.0	90.2	56.4	80.9	44.3	65.4	25.7	38.0	52.9	78.2	36.7	51.9	50.3	70.2
12		61.3	89.5	53.6	79.8	41.9	64.2	23.1	35.2	49.8	76.4	35.1	51.2	48.8	69.2
13		57.4	86.8	51.3	79.0	39.2	62.4	21.8	34.4	47.2	74.9	32.7	49.5	44.4	66.6
14		54.1	84.5	48.0	77.0	36.5	60.4	20.5	33.5	43.9	72.4	31.0	48.4	42.8	66.1
15		51.6	83.4	45.6	75.8	34.6	59.3	19.6	32.9	41.7	71.3	29.7	48.2	37.2	60.0
16		49.2	82.3	42.1	72.8	32.8	58.2	17.8	30.8	39.2	69.8	27.7	46.6	36.0	59.1
17		48.9	82.3	40.5	72.2	31.3	57.6	16.9	29.9	37.7	69.1	26.9	46.5	34.4	57.8
18		46.7	82.3	38.6	71.9	29.7	57.0	16.5	29.9	35.6	68.3	25.6	46.1	34.4	57.0
19		43.9	82.1	35.8	69.0	27.2	54.4	16.0	29.9	33.2	66.1	23.4	43.9		
20		38.3	74.5	33.2	66.4	25.7	53.2	14.3	27.5	30.9	63.9	22.0	42.3		

cont'd Years	TNM staging			
	M1 n=6,022		NA/NOS n=6,348	
	obs. %	rel. %	obs. %	rel. %
0	100.0	100.0	100.0	100.0
1	52.0	53.8	81.8	85.6
2	28.8	30.6	72.8	79.4
3	17.1	18.6	66.6	75.4
4	12.0	13.4	60.3	70.9
5	8.9	10.2	55.2	67.4
6	7.1	8.3	51.1	64.8
7	5.9	7.0	47.6	62.6
8	5.1	6.2	44.2	60.4
9	4.5	5.6	41.4	58.8
10	4.1	5.3	38.5	56.8
11	3.8	5.0	36.5	55.9
12	3.3	4.6	34.0	54.2
13	3.0	4.3	32.2	53.3
14	2.9	4.2	29.7	51.2
15	2.9	4.2	28.3	50.7
16			26.7	49.7
17			24.9	48.2
18			23.0	46.5
19			21.3	44.9
20			20.1	44.6

Table 4h. Observed (obs.) and relative (rel.) survival of patients with colorectal cancer by TNM staging for period 1988-2012 (N=41,623).

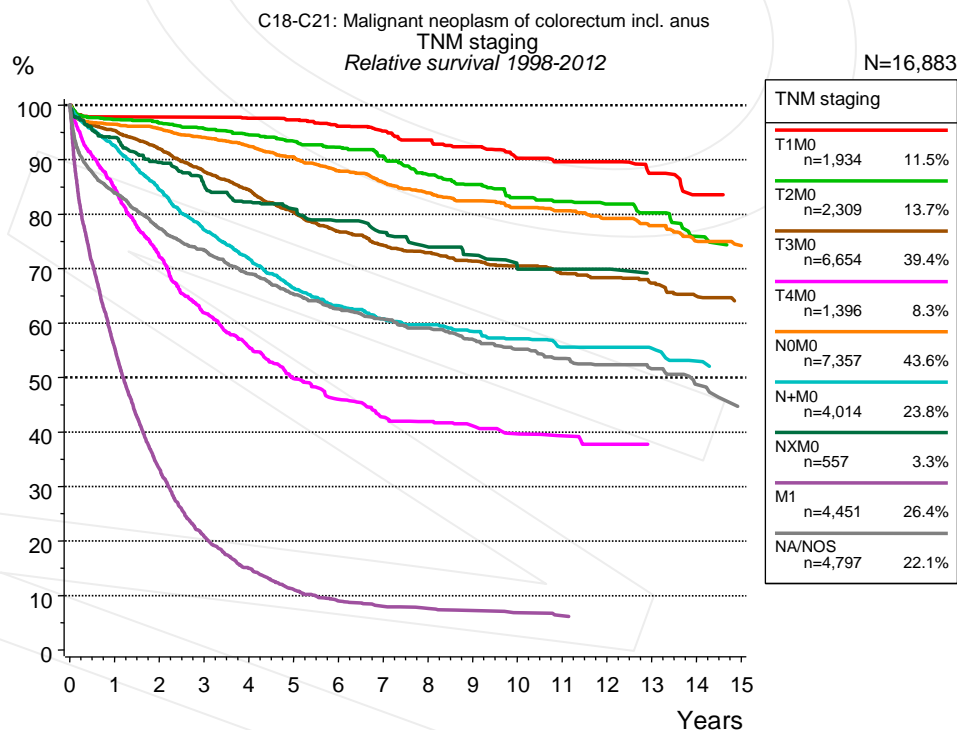


Figure 4i. Relative survival of patients with colorectal cancer by TNM staging. For 20,453 of 21,680 cases diagnosed between 1998 and 2012 valid data could be obtained for this item. For a total of 16,883 cases an evaluable classification was established. The accumulated percentage exceeds the 100% value because patients are potentially considered in more than one subgroup. The grey line represents the subgroup of 4,797 patients with missing values regarding TNM

staging (22.1% of 21,680 patients, the percent values of all other categories are related to n=16,883).

Years	TNM staging													
	T1M0 n=1,934		T2M0 n=2,309		T3M0 n=6,654		T4M0 n=1,396		N0M0 n=7,357		N+M0 n=4,014		NXM0 n=557	
	obs. %	rel. %	obs. %	rel. %	obs. %	rel. %	obs. %	rel. %	obs. %	rel. %	obs. %	rel. %	obs. %	rel. %
0	100.0	100.0	100.0	100.0	100.0	100.0	100.0	100.0	100.0	100.0	100.0	100.0	100.0	100.0
1	95.4	97.8	94.4	97.4	91.8	95.4	81.4	84.8	93.1	96.5	89.4	92.6	91.0	94.1
2	92.8	97.8	90.8	96.7	85.6	92.0	66.7	72.1	89.2	95.7	79.1	84.5	84.0	89.5
3	90.0	97.8	87.0	95.7	78.9	87.8	55.3	61.9	84.8	94.1	70.0	77.1	77.9	85.3
4	87.0	97.6	83.2	94.5	73.3	84.4	48.0	55.6	80.5	92.5	63.2	71.8	73.2	82.2
5	84.3	97.3	79.6	93.4	67.4	80.4	41.7	49.8	76.1	90.5	56.7	66.4	70.1	80.9
6	80.4	96.2	76.1	92.3	62.2	76.8	37.3	46.0	71.4	88.0	52.3	63.2	66.4	78.7
7	77.0	95.2	72.2	90.6	58.0	74.2	33.8	42.7	67.2	85.8	48.8	60.8	63.1	76.7
8	73.3	93.6	67.2	87.2	55.1	72.9	32.3	41.9	63.4	83.9	46.7	59.7	59.4	74.0
9	69.9	92.4	63.9	85.4	51.9	71.4	30.6	41.1	60.2	82.4	44.1	58.5	56.4	72.5
10	65.7	90.2	60.0	83.1	49.4	70.5	28.9	39.7	57.0	81.2	42.0	57.2	52.4	69.9
11	63.3	89.6	57.4	82.3	46.5	69.1	27.6	39.3	54.5	80.6	39.2	55.6	51.4	69.9
12	61.5	89.6	54.7	81.9	44.4	68.3	26.0	37.8	51.5	79.2	38.4	55.5	51.4	69.9
13	56.9	87.5	52.0	80.2	41.8	67.4	25.2	37.6	48.7	77.9	36.3	55.3	47.0	68.9
14	52.2	83.5	46.9	75.9	38.7	65.0	25.2	36.1	45.0	75.0	33.7	53.0	47.0	66.4

Years	TNM staging			
	M1 n=4,451		NA/NOS n=4,797	
	obs. %	rel. %	obs. %	rel. %
0	100.0	100.0	100.0	100.0
1	53.5	55.4	80.0	83.9
2	31.3	33.2	70.9	77.3
3	19.2	20.8	64.7	73.3
4	13.5	15.0	58.7	69.0
5	9.8	11.1	53.6	65.3
6	7.8	9.0	49.5	62.5
7	6.8	8.0	46.4	60.7
8	6.4	7.6	43.5	59.1
9	5.9	7.2	40.5	57.0
10	5.4	6.8	37.9	55.2
11	4.9	6.3	35.4	53.5
12	4.7	6.1	33.5	52.4
13	4.7	5.9	31.7	51.6
14			28.8	48.7

Table 4j. Observed (obs.) and relative (rel.) survival of patients with colorectal cancer by TNM staging for period 1998-2012 (N=28,672).

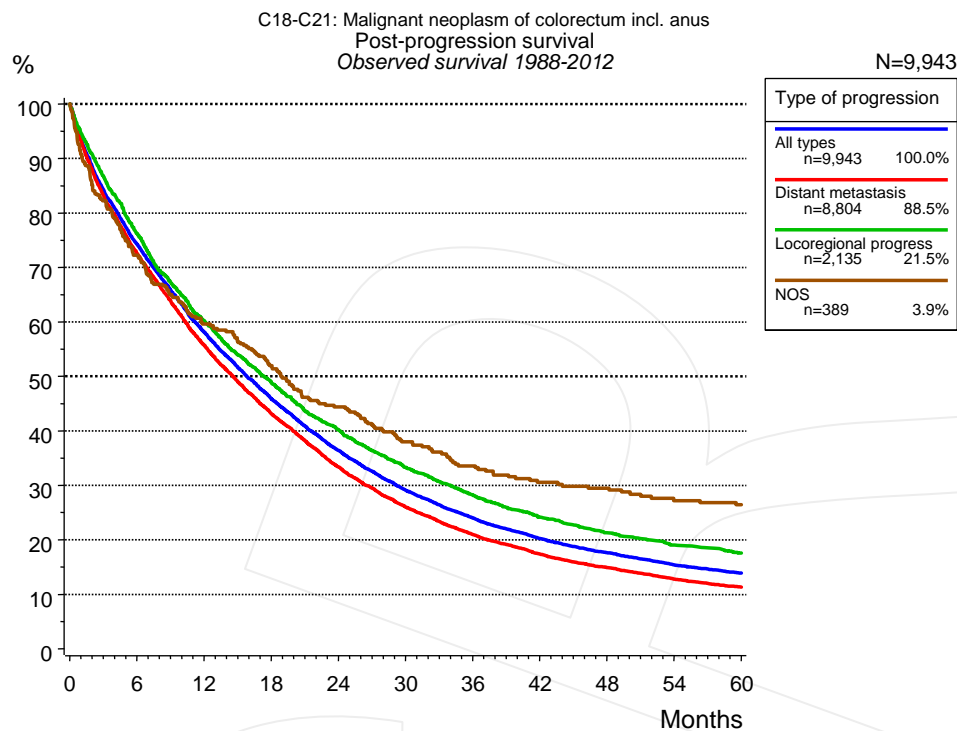


Figure 5a. Observed post-progression survival of 9,943 patients with colorectal cancer diagnosed between 1988 and 2012 (incl. M1). These 9,943 patients with documented progression events during their course of disease represent 32.5% of the totally 30,559 evaluated cases. Patients with cancer relapse documented via death certificates only were excluded (n=2,323, 7.6%). Multiple progression types on different sites are included in the evaluation even when not occurring synchronously. The NOS (not otherwise specified) class is included under the condition, that it is the one and only progression type during the course of disease.

Medical record documentation often lacks the linguistic severity to distinguish between local relapse, regional lymph node metastasis and distant spread in solid cancers. Frequently, the statement “not specified” is the only information in registries regarding relapse of the disease. The category “All types” denotes all cases who suffered from at least one relapse during the course of disease (incl. primary M1-status). Although, the real number of relapsed patients is likely to be much higher. The accumulated percentage of patients with local relapse or distant metastasis exceeds the 100% value because patients are potentially considered in more than one subgroup.

Months	Type of progression			
	All types n=9,943	Distant metastasis n=8,804	Locoregional progress n=2,135	NOS n=389
	%	%	%	%
0	100.0	100.0	100.0	100.0
12	58.1	55.7	60.1	59.6
24	36.4	33.4	40.2	44.4
36	24.0	21.0	28.2	33.6
48	17.6	14.9	21.2	29.5
60	13.9	11.3	17.5	26.4

Table 5b. Observed post-progression survival of patients with colorectal cancer for period 1988-2012 (N=9,943).

Shortcuts

AS	Assembled survival chart (observed, expected, relative)
CS	Conditional survival
DCO	Death certificate only. The death certificate provides the only notification to the registry.
MCR	Munich Cancer Registry, Germany (Tumorregister München)
NA	Not available
NCI	National Cancer Institute, USA
NOS	Not otherwise specified
OS	Observed/overall survival (Kaplan-Meier estimate)
PPS	Post-progression survival
RS	Relative Survival. Ratio of observed and expected survival (derived from the normal population)
SEER	Surveillance, Epidemiology, and End Results, USA
TTP	Time to progression Date of entry: Date of diagnosis Event (Progression): First local recurrence, lymph node relapse or distant metastasis, unspecified recurrence First all-cause recurrence is illustrated by survival curves (Kaplan-Meier estimate). First local recurrence, lymph node relapse or distant metastasis are depicted cumulatively, where applicable ("reverse" Kaplan-Meier estimate).
UICC	Union for International Cancer Control, Geneva

Recommended Citation

Munich Cancer Registry. Survival C18-C21: Colorectal cancer [Internet]. 2014 [updated 2014 Mar 25; cited 2014 May 1]. Available from: http://www.tumorregister-muenchen.de/en/facts/surv/surv_C1821E.pdf

Copyright

The content of the public web site provided by the Munich Cancer Registry is available worldwide and free of charge. All documents are free to download, utilize, copy, print-out and distribute, providing that the MCR is referenced.

Disclaimer

The Munich Cancer Registry reserves the right to not be responsible for the topicality, correctness, completeness or quality of the information provided. Liability claims regarding damage caused by the use of any information provided, including any kind of information which is incomplete or incorrect, will therefore be rejected.

Index of figures and tables

Fig./Tbl.	Page
1a Relative survival by period of diagnosis (chart)	2
1b Survival by period of diagnosis (table)	2
1c Relative survival by year of diagnosis (chart)	3
1d Survival by year of diagnosis (table)	3
2a Survival by gender (chart)	4
2b Survival by gender (table)	5
3a Relative survival by age category (chart)	5
3b Observed survival by age category (chart)	6
3c Survival by age category (table)	6
4a Relative survival by UICC 1988+ (chart)	7
4b Survival by UICC 1988+ (table)	7
4c Relative survival by UICC 1998+ (chart)	8
4d Survival by UICC 1998+ (table)	8
4e Conditional survival by UICC (chart)	9
4f Conditional survival by UICC (table)	9
4g Relative survival by TNM staging 1988+ (chart)	10
4h Survival by TNM staging 1988+ (table)	10
4i Relative survival by TNM staging 1998+ (chart)	11
4j Survival by TNM staging 1998+ (table)	12
5a Observed post-progression survival (chart)	13
5b Observed post-progression survival (table)	13