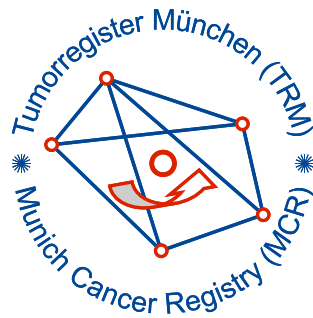


Munich Cancer Registry



- ▶ Baseline statistics
- ▶ Selection Matrix
- ▶ Homepage
- ▶ *Deutsch*

Munich Cancer Registry at Munich Cancer Center
Marchioninstr. 15
Munich, 81377
Germany

<http://www.tumorregister-muenchen.de/en>

Cancer statistics: Survival

C18: Colon cancer

Year of diagnosis	1988-2012
Patients	32,318
Diseases	32,947
Cases evaluated	18,701
Creation date	03/25/2014
Export date	02/12/2014
Population	4.5 m



http://www.tumorregister-muenchen.de/en/facts/surv/surv_C18__E.pdf

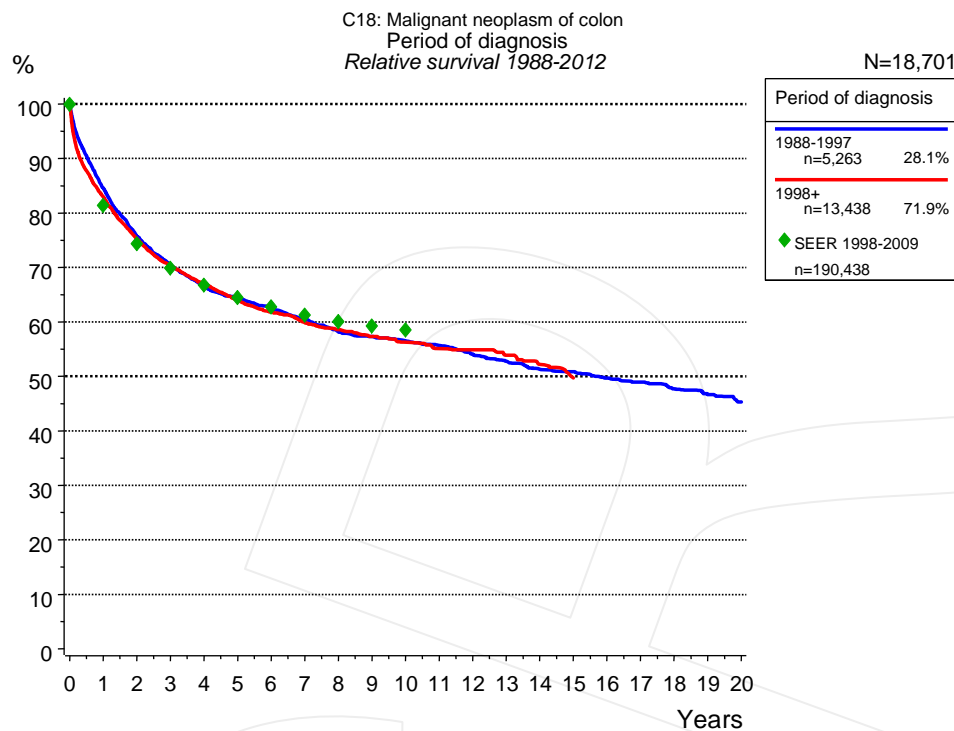


Figure 1a. Relative survival of patients with colon cancer by period of diagnosis. Included in the evaluation are 18,701 cases diagnosed between 1988 and 2012.

The survival results of the SEER program (Surveillance, Epidemiology, and End Results) of the American National Cancer Institute (NCI) are summarized as the period of diagnosis from 1998 to 2009, and are represented by green diamonds in order to facilitate comparisons between MCR and SEER.

The presented survival curves are derived from clinical records with valid follow-up informations, which means that death certificate cases (DCO) cases are omitted from the analysis. With this one restriction, the MCR has provided population-based statistics since 1988, collecting data on all cancer cases in the region of southern Bavaria. Historical data of previous time periods can be heavily selected, therefore, univariate survival comparisons of the presented time periods must be carefully considered. Nonetheless, all calculable survival curves are depicted to facilitate the comparison of long time follow-up analyses of relative survival between particular cancers.

Years	Period of diagnosis			
	1988-1997 n=5,263		1998+ n=13,438	
	obs. %	rel. %	obs. %	rel. %
0	100.0	100.0	100.0	100.0
1	81.2	84.5	79.6	83.0
2	70.1	75.8	69.6	75.3
3	62.8	70.5	62.7	70.3
4	57.1	66.5	57.7	67.1
5	53.4	64.5	53.1	64.1
6	49.8	62.5	49.3	61.8
7	46.3	60.5	46.0	59.9
8	42.9	58.2	43.3	58.6
9	40.7	57.3	40.8	57.3
10	38.6	56.6	38.5	56.3
11	36.6	55.7	36.3	55.1
12	34.2	54.1	34.8	54.9
13	32.1	52.8	32.7	53.9
14	30.0	51.3	30.3	52.2
15	28.7	50.8		
16	26.9	49.7		
17	25.6	49.0		
18	23.8	47.7		
19	22.3	46.7		
20	20.8	45.3		

Table 1b. Observed (obs.) and relative (rel.) survival of patients with colon cancer by period of diagnosis for period 1988-2012 (N=18,701).

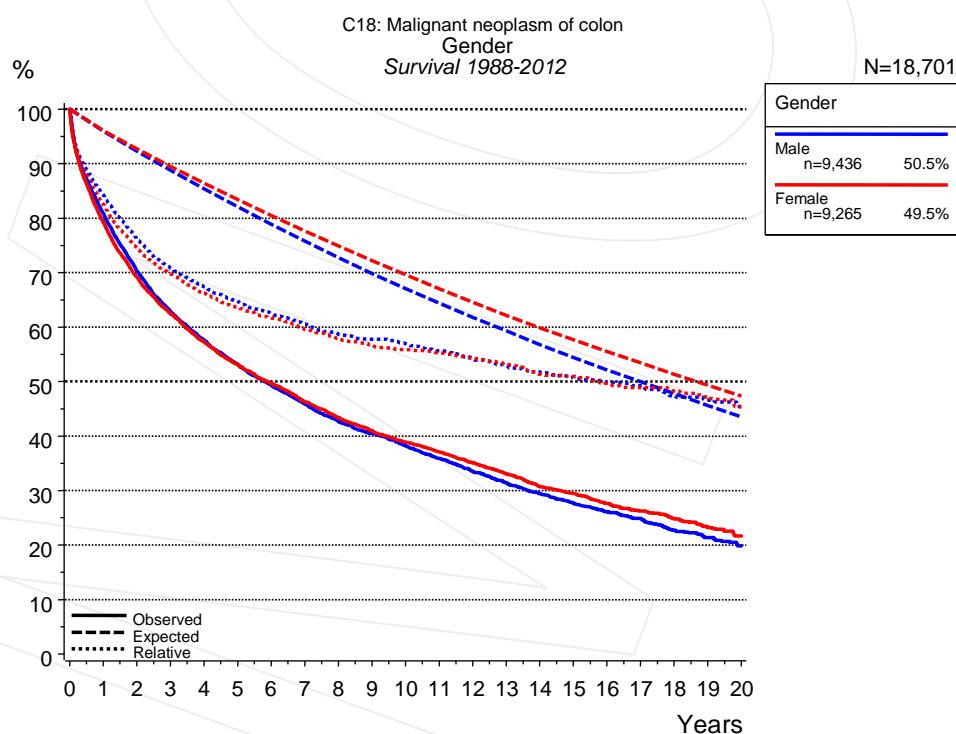


Figure 2a. Survival of patients with colon cancer by gender. Included in the evaluation are 18,701 cases diagnosed between 1988 and 2012.

Years	Gender			
	Male n=9,436		Female n=9,265	
	obs. %	rel. %	obs. %	rel. %
0	100.0	100.0	100.0	100.0
1	80.9	84.3	79.2	82.4
2	70.3	76.2	69.1	74.6
3	62.9	70.8	62.4	69.7
4	57.5	67.4	57.3	66.3
5	53.2	64.8	53.1	63.7
6	49.3	62.5	49.7	61.7
7	45.9	60.6	46.3	59.6
8	42.7	58.7	43.4	57.9
9	40.4	57.8	41.0	56.7
10	38.2	57.0	38.9	55.8
11	35.9	55.6	37.1	55.2
12	33.5	54.2	35.1	54.3
13	31.4	52.9	33.0	53.1
14	29.4	51.8	30.7	51.3
15	27.6	50.7	29.5	50.9
16	26.1	49.9	27.6	49.6
17	24.9	49.3	26.3	48.9
18	22.7	47.4	24.9	48.3
19	21.3	46.6	23.2	46.9
20	19.9	45.4	21.7	45.4

Table 2b. Observed (obs.) and relative (rel.) survival of patients with colon cancer by gender for period 1988-2012 (N=18,701).

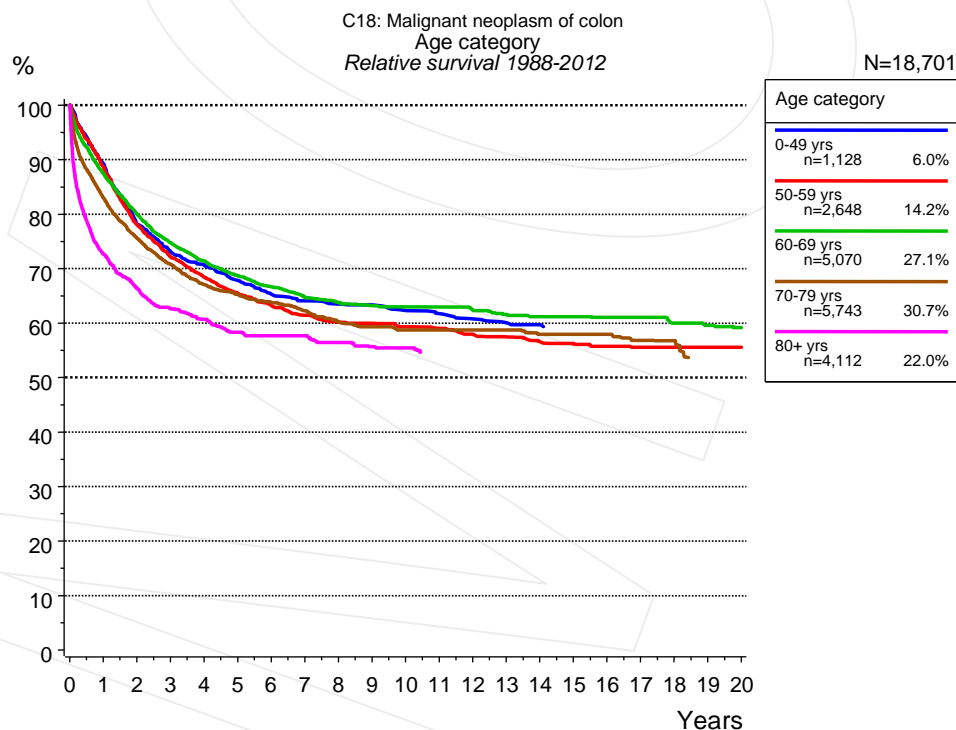


Figure 3a. Relative survival of patients with colon cancer by age category. Included in the evaluation are 18,701 cases diagnosed between 1988 and 2012.

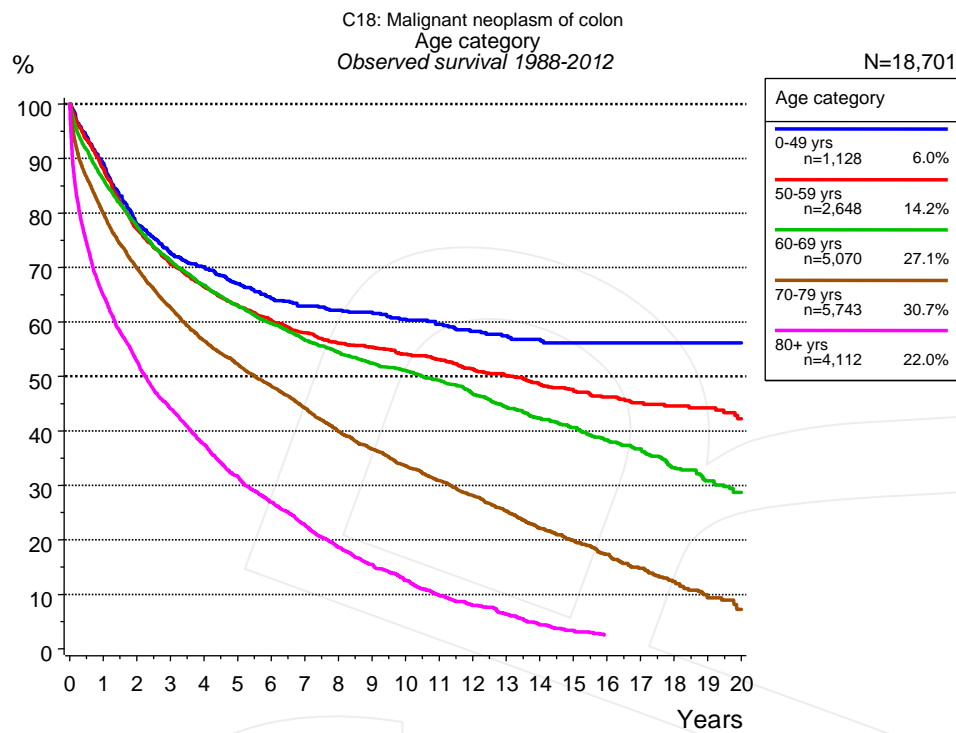


Figure 3b. Observed survival of patients with colon cancer by age category. Included in the evaluation are 18,701 cases diagnosed between 1988 and 2012.

Years	Age category									
	0-49 yrs n=1,128		50-59 yrs n=2,648		60-69 yrs n=5,070		70-79 yrs n=5,743		80+ yrs n=4,112	
	obs. %	rel. %	obs. %	rel. %	obs. %	rel. %	obs. %	rel. %	obs. %	rel. %
0	100.0	100.0	100.0	100.0	100.0	100.0	100.0	100.0	100.0	100.0
1	89.1	89.3	88.1	88.7	86.1	87.5	79.9	83.0	64.9	72.7
2	77.9	78.2	77.0	78.0	77.6	80.1	69.8	75.5	52.8	66.3
3	72.7	73.1	70.6	72.1	71.3	74.8	62.6	70.8	44.1	62.6
4	70.1	70.7	66.5	68.4	66.7	71.4	56.6	67.1	37.5	60.7
5	67.0	67.8	63.0	65.5	63.0	68.8	52.2	65.3	31.7	58.3
6	64.2	65.3	60.3	63.2	59.8	66.7	48.2	63.8	26.9	57.7
7	62.9	64.1	58.0	61.4	56.6	64.7	44.2	62.2	22.8	57.7
8	62.2	63.5	56.1	60.1	54.4	63.8	39.9	60.2	18.7	56.4
9	61.8	63.3	55.4	60.0	52.5	63.2	36.6	59.3	15.5	55.7
10	60.5	62.3	54.1	59.3	51.0	63.0	33.6	58.7	12.5	55.4
11	59.6	61.7	53.1	59.0	49.2	63.0	30.8	58.7		
12	58.3	60.8	51.4	57.9	46.9	62.5	28.1	58.7		
13	57.4	60.1	50.2	57.5	44.4	61.6	25.3	58.7		
14	56.8	59.7	48.6	56.6	42.3	61.2	22.1	58.0		
15			47.3	56.2	40.7	61.2	19.9	58.0		
16			46.2	55.7	38.3	61.1	17.3	58.0		
17			45.1	55.5	36.7	61.1	14.8	56.9		
18			44.6	55.5	33.3	60.0	12.3	56.8		
19			44.2	55.5	30.8	59.6				
20			42.2	55.5	28.7	59.2				

Table 3c. Observed (obs.) and relative (rel.) survival of patients with colon cancer by age category for period 1988-2012 (N=18,701).

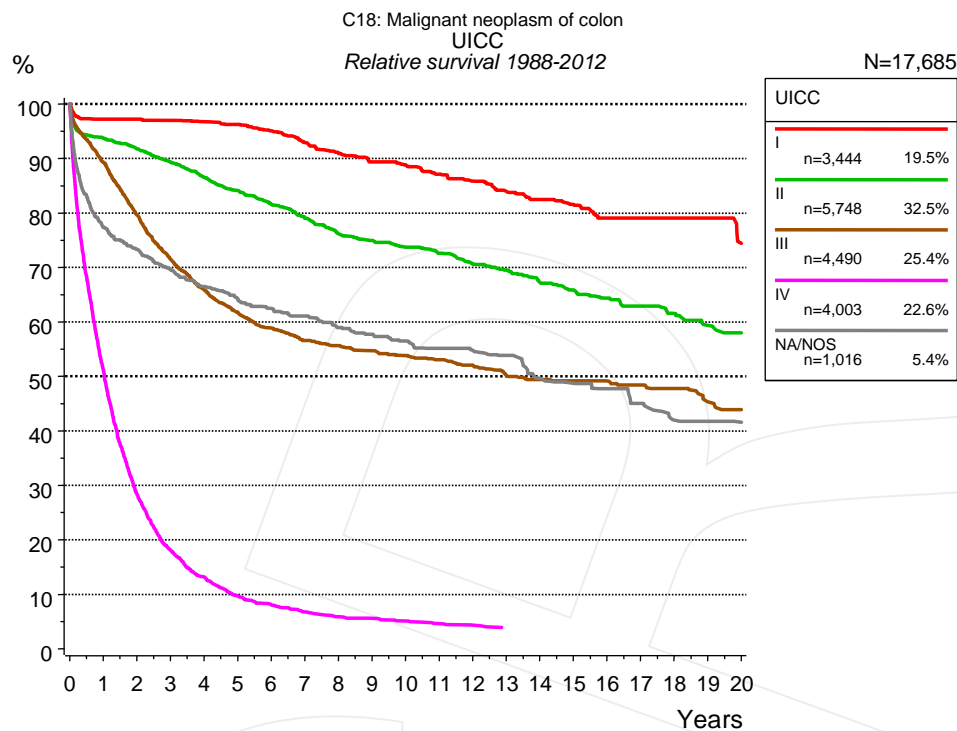


Figure 4a. Relative survival of patients with colon cancer by UICC. For 17,775 of 18,701 cases diagnosed between 1988 and 2012 valid data could be obtained for this item. For a total of 17,685 cases an evaluable classification was established. The grey line represents the subgroup of 1,016 patients with missing values regarding UICC (5.4% of 18,701 patients, the percent values of all other categories are related to n=17,685).

UICC										
	I		II		III		IV		NA/NOS	
	n=3,444		n=5,748		n=4,490		n=4,003		n=1,016	
Years	obs. %	rel. %	obs. %	rel. %	obs. %	rel. %	obs. %	rel. %	obs. %	rel. %
0	100.0	100.0	100.0	100.0	100.0	100.0	100.0	100.0	100.0	100.0
1	94.1	97.2	89.6	93.7	85.7	89.3	49.3	51.1	73.5	77.4
2	90.9	97.2	84.2	91.8	73.6	79.6	26.7	28.4	66.8	73.3
3	87.7	96.9	78.6	89.3	63.7	71.5	16.6	18.1	61.1	69.6
4	84.3	96.7	73.1	86.6	56.7	65.9	11.7	13.2	56.4	66.5
5	80.9	96.2	68.2	84.1	51.3	61.8	8.5	9.7	52.5	64.3
6	76.9	95.1	63.5	81.6	47.2	58.9	6.8	8.1	49.2	62.5
7	72.5	92.9	59.0	79.0	43.8	56.6	5.6	6.8	46.9	61.1
8	68.3	91.0	54.7	76.2	41.6	55.7	4.7	5.9	43.2	58.9
9	64.7	89.4	51.6	74.9	39.5	54.7	4.4	5.6	40.8	57.7
10	61.8	88.8	48.7	73.7	37.4	53.8	3.9	5.1	38.4	56.5
11	58.5	87.1	46.1	72.6	35.6	53.1	3.4	4.6	36.3	55.2
12	55.3	85.9	43.1	70.6	33.8	52.1	3.0	4.4	34.4	54.8
13	51.9	83.9	40.7	69.5	31.4	50.2	2.6	3.9	32.6	53.8
14	49.2	82.4	37.8	67.2	29.9	49.4	2.6	3.9	28.6	49.6
15	46.4	81.5	35.7	65.9	28.9	49.2	2.6	3.9	27.0	48.7
16	43.4	79.1	33.5	64.3	27.5	49.2			25.5	47.7
17	42.4	79.1	31.7	62.9	26.3	48.5			23.2	45.0
18	40.3	79.1	29.5	61.5	24.8	47.8			20.6	42.0
19	39.3	79.1	27.2	59.4	22.3	45.3			19.8	41.7
20	34.8	74.4	25.7	58.0	21.2	43.9			18.8	41.6

Table 4b. Observed (obs.) and relative (rel.) survival of patients with colon cancer by UICC for period 1988-2012 (N=17,685).

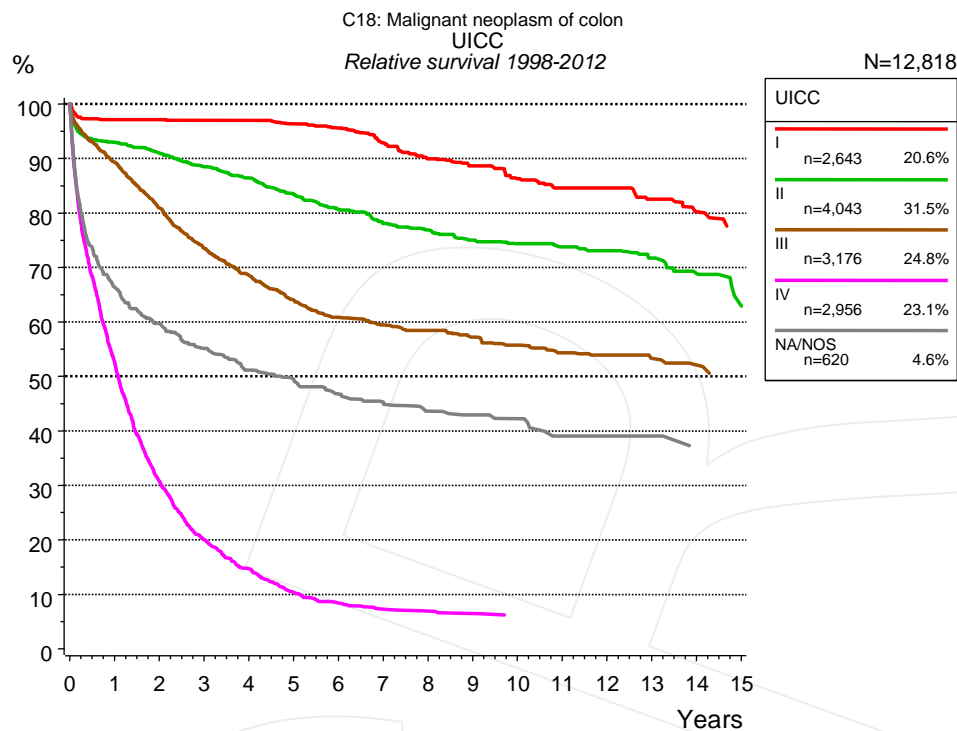


Figure 4c. Relative survival of patients with colon cancer by UICC. For 12,889 of 13,438 cases diagnosed between 1998 and 2012 valid data could be obtained for this item. For a total of 12,818 cases an evaluable classification was established. The grey line represents the subgroup of 620 patients with missing values regarding UICC (4.6% of 13,438 patients, the percent values of all other categories are related to n=12,818).

Years	UICC									
	I		II		III		IV		NA/NOS	
	n=2,643		n=4,043		n=3,176		n=2,956		n=620	
	obs. %	rel. %	obs. %	rel. %	obs. %	rel. %	obs. %	rel. %	obs. %	rel. %
0	100.0	100.0	100.0	100.0	100.0	100.0	100.0	100.0	100.0	100.0
1	94.2	97.1	88.8	93.0	85.7	89.3	50.7	52.6	62.6	66.4
2	91.0	97.1	83.3	91.0	74.8	80.9	28.9	30.8	53.8	59.7
3	88.1	97.0	77.8	88.5	65.4	73.5	18.4	20.0	47.7	55.1
4	84.8	97.0	72.9	86.4	58.9	68.5	13.1	14.7	42.9	51.2
5	81.2	96.3	67.6	83.5	53.1	64.0	9.1	10.4	39.9	49.4
6	77.5	95.6	62.7	80.6	48.7	60.8	7.2	8.4	36.7	46.8
7	72.5	92.9	58.3	78.0	46.0	59.4	6.1	7.3	34.6	45.3
8	67.4	89.9	55.3	76.9	43.8	58.4	5.7	6.9	32.1	43.6
9	63.9	88.6	51.7	75.0	41.1	57.2	5.3	6.5	30.8	42.9
10	59.8	86.3	49.2	74.4	38.8	55.7	4.8	6.1	29.7	42.2
11	56.7	84.5	46.7	73.7	36.4	54.3			26.3	39.1
12	54.2	84.5	44.7	73.0	35.1	53.9			26.3	39.1
13	50.6	82.5	41.8	71.7	33.1	53.3			25.3	39.1
14	46.8	80.2	38.4	68.8	31.5	52.1			22.8	36.9

Table 4d. Observed (obs.) and relative (rel.) survival of patients with colon cancer by UICC for period 1998-2012 (N=12,818).

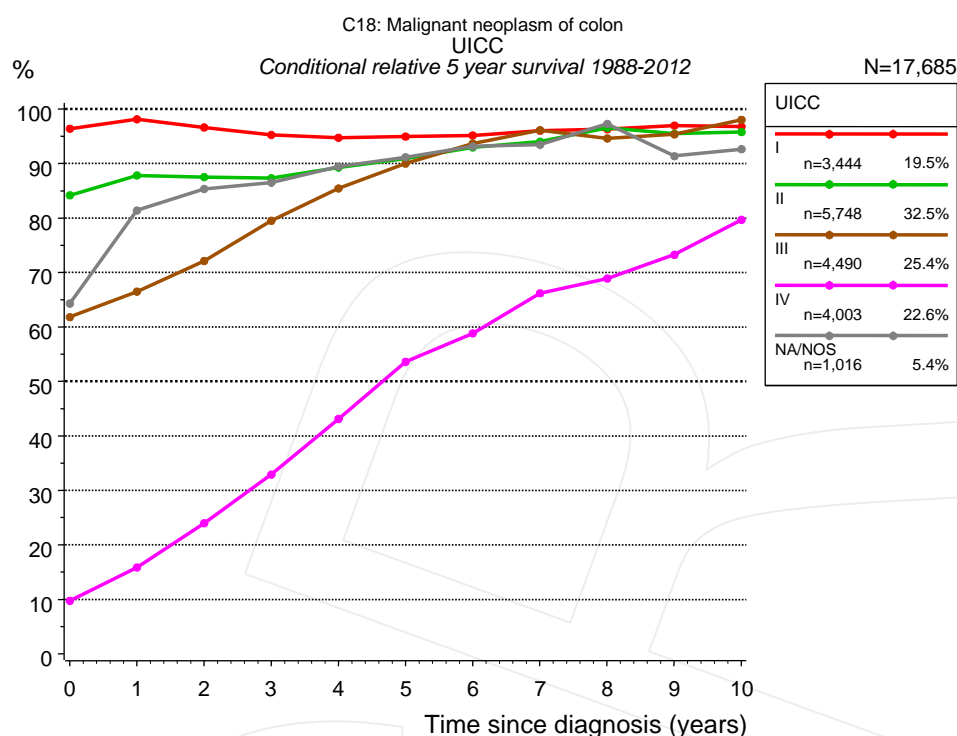


Figure 4e. Conditional relative 5-year survival of patients with colon cancer by UICC. For 17,775 of 18,701 cases diagnosed between 1988 and 2012 valid data could be obtained for this item. For a total of 17,685 cases an evaluable classification was established. The grey line represents the subgroup of 1,016 patients with missing values regarding UICC (5.4% of 18,701 patients, the percent values of all other categories are related to n=17,685).

UICC										
Years	I		II		III		IV		NA/NOS	
	n	Cond. surv. % 5 yrs	n	Cond. surv. % 5 yrs	n	Cond. surv. % 5 yrs	n	Cond. surv. % 5 yrs	n	Cond. surv. % 5 yrs
0	3,444	96.4	5,748	84.2	4,490	61.8	4,003	9.7	1,016	64.3
1	3,074	98.1	4,917	87.8	3,670	66.5	1,850	15.9	713	81.4
2	2,736	96.6	4,322	87.5	2,932	72.1	911	24.0	629	85.3
3	2,413	95.2	3,733	87.3	2,321	79.5	498	32.9	562	86.5
4	2,089	94.7	3,128	89.3	1,847	85.4	304	43.1	492	89.4
5	1,777	94.9	2,636	90.9	1,464	90.0	184	53.6	443	91.2
6	1,495	95.1	2,192	93.0	1,183	93.7	132	58.8	391	93.1
7	1,284	96.0	1,880	94.0	1,009	96.1	89	66.2	360	93.4
8	1,096	96.3	1,584	96.6	866	94.6	67	68.9	311	97.3
9	936	97.0	1,386	95.5	744	95.3	51	73.3	281	91.4
10	777	96.8	1,167	95.8	626	98.0	40	79.6	247	92.6

Table 4f. Conditional relative 5-year survival of patients with colon cancer by UICC for period 1988-2012 (N=17,685).

Conditional relative survival rates refer to the relative survival probability, in this case for 5 years after cancer diagnosis, compared to the age- and sex-matched population (=100%) under the condition of being alive for a certain time period (x-axis in Figure 4c). The results illustrate to what extent the cancer induced mortality of particular subgroups declines in the subsequent years after detection of the malignancy. For instance, according to the presented survival statistics, patients in the subgroup UICC="I", who are alive at least 3 years after cancer diagnosis, the conditional relative 5-year survival rate is 95.2% (n=2,413).

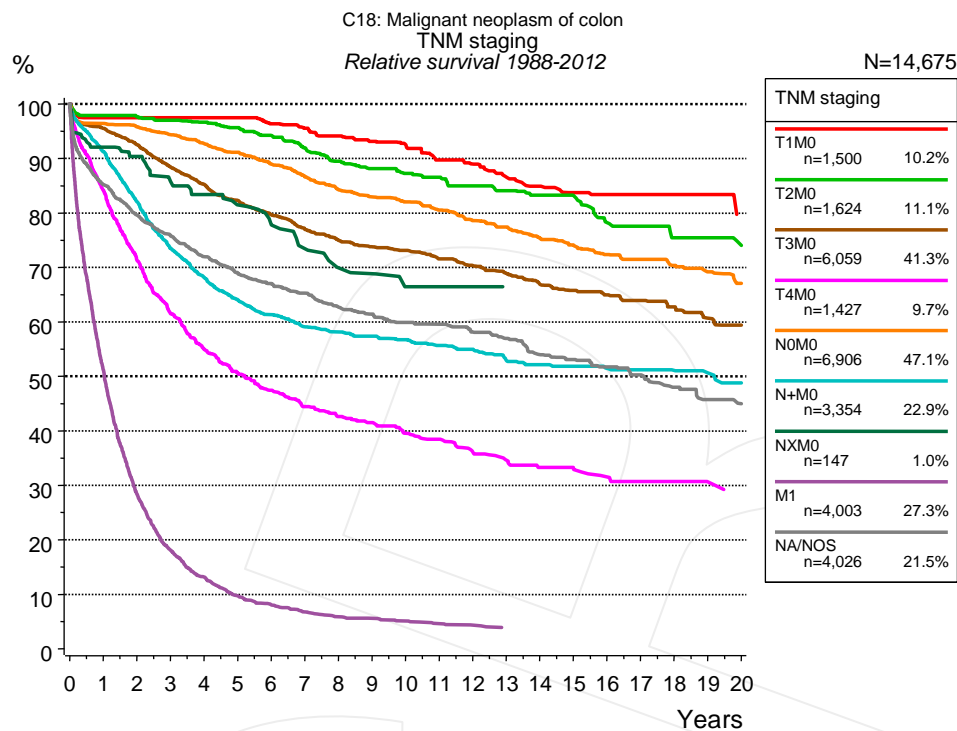


Figure 4g. Relative survival of patients with colon cancer by TNM staging. For 17,775 of 18,701 cases diagnosed between 1988 and 2012 valid data could be obtained for this item. For a total of 14,675 cases an evaluable classification was established. The accumulated percentage exceeds the 100% value because patients are potentially considered in more than one subgroup. The grey line represents the subgroup of 4,026 patients with missing values regarding TNM staging (21.5% of 18,701 patients, the percent values of all other categories are related to n=14,675).

		TNM staging													
		T1M0 n=1,500		T2M0 n=1,624		T3M0 n=6,059		T4M0 n=1,427		N0M0 n=6,906		N+M0 n=3,354		NXM0 n=147	
Years		obs. %	rel. %	obs. %	rel. %	obs. %	rel. %	obs. %	rel. %	obs. %	rel. %	obs. %	rel. %	obs. %	rel. %
0		100.0	100.0	100.0	100.0	100.0	100.0	100.0	100.0	100.0	100.0	100.0	100.0	100.0	100.0
1		95.0	97.5	94.6	97.9	91.7	95.5	80.2	84.1	92.8	96.4	87.7	91.3	89.1	92.1
2		92.2	97.5	91.1	97.7	85.4	92.6	65.2	71.3	88.7	95.8	76.0	82.0	84.6	90.4
3		89.5	97.5	87.7	97.0	78.6	88.4	54.2	61.6	84.2	94.4	65.9	73.5	77.9	85.8
4		86.6	97.5	84.0	96.7	72.8	85.2	46.5	55.0	79.7	92.7	59.0	68.2	73.4	83.4
5		84.3	97.5	80.1	95.7	67.7	82.4	41.3	50.6	75.4	91.1	53.6	64.1	68.7	81.5
6		79.8	96.4	75.9	94.2	63.1	79.7	37.3	47.5	70.8	89.0	49.7	61.3	63.4	77.8
7		76.4	95.5	71.5	92.0	58.6	77.0	33.7	44.4	66.3	86.6	46.2	59.1	58.9	73.5
8		72.8	94.1	67.0	89.5	55.0	75.0	31.1	42.6	62.1	84.3	44.0	58.1	53.7	69.9
9		69.4	93.1	63.7	88.1	52.0	73.8	29.3	41.5	58.8	82.9	41.9	57.3	52.2	68.9
10		66.5	92.5	60.7	87.3	49.6	73.1	26.8	39.6	55.9	82.0	40.0	56.7	47.5	66.5
11		62.3	89.7	58.2	86.6	46.7	71.6	25.2	38.4	52.8	80.5	38.0	55.7	47.5	66.5
12		59.5	89.0	55.0	85.0	44.2	70.3	22.9	36.0	49.5	78.6	36.3	55.0	47.5	66.5
13		55.7	86.6	52.0	84.1	41.6	68.9	21.1	34.6	47.0	77.4	33.6	52.9	44.7	66.5
14		52.6	84.9	49.8	83.3	38.9	66.9	19.6	33.3	44.0	75.3	32.1	52.1		
15		50.0	83.8	47.5	83.2	36.9	65.8	18.9	33.2	41.6	74.1	30.9	51.8		
16		48.5	83.4	42.7	78.2	35.1	65.0	17.5	31.5	39.2	72.3	29.2	51.5		
17		47.8	83.4	41.3	77.6	33.4	63.9	16.6	30.7	37.6	71.5	28.3	51.2		
18		46.8	83.4	37.7	75.5	31.4	62.8	16.2	30.7	35.1	70.3	26.8	51.1		
19		45.4	83.4	36.8	75.5	29.0	60.7	15.5	30.7	33.1	69.2	25.3	50.7		
20		39.1	79.2	34.3	74.1	27.6	59.4	13.9	27.5	31.0	67.1	23.9	48.8		

cont'd Years	TNM staging			
	M1 n=4,003		NA/NOS n=4,026	
	obs. %	rel. %	obs. %	rel. %
0	100.0	100.0	100.0	100.0
1	49.3	51.1	81.2	85.2
2	26.7	28.4	72.7	79.6
3	16.6	18.1	66.4	75.8
4	11.7	13.2	60.6	72.0
5	8.5	9.7	55.8	69.0
6	6.8	8.1	52.1	67.0
7	5.6	6.8	48.7	65.3
8	4.7	5.9	44.8	62.7
9	4.4	5.6	42.1	61.4
10	3.9	5.1	39.4	59.9
11	3.4	4.6	37.7	59.6
12	3.0	4.4	35.2	58.2
13	2.6	3.9	32.9	57.0
14	2.6	3.9	29.9	54.0
15	2.6	3.9	28.2	53.1
16			26.5	51.7
17			24.5	50.2
18			22.3	48.1
19			20.4	45.7
20			19.0	45.0

Table 4h. Observed (obs.) and relative (rel.) survival of patients with colon cancer by TNM staging for period 1988-2012 (N=25,020).

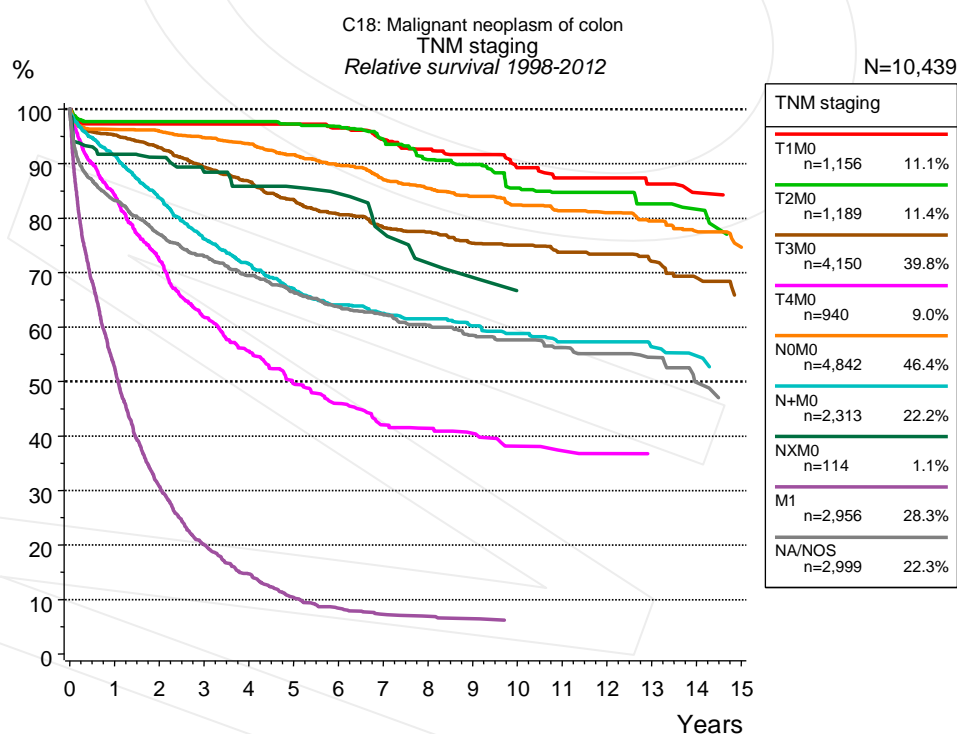


Figure 4i. Relative survival of patients with colon cancer by TNM staging. For 12,889 of 13,438 cases diagnosed between 1998 and 2012 valid data could be obtained for this item. For a total of 10,439 cases an evaluable classification was established. The accumulated percentage exceeds the 100% value because patients are potentially considered in more than one subgroup. The grey line represents the subgroup of 2,999 patients with missing values regarding TNM staging (22.3% of 13,438 patients, the percent values of all other categories are related to n=10,439).

Years	TNM staging													
	T1M0 n=1,156		T2M0 n=1,189		T3M0 n=4,150		T4M0 n=940		N0M0 n=4,842		N+M0 n=2,313		NXM0 n=114	
	obs. %	rel. %	obs. %	rel. %	obs. %	rel. %	obs. %	rel. %	obs. %	rel. %	obs. %	rel. %	obs. %	rel. %
0	100.0	100.0	100.0	100.0	100.0	100.0	100.0	100.0	100.0	100.0	100.0	100.0	100.0	100.0
1	94.8	97.3	94.8	97.7	91.4	95.2	80.5	84.2	92.7	96.2	88.0	91.5	89.5	91.7
2	92.0	97.3	91.8	97.7	85.8	93.0	66.2	72.2	88.9	95.9	77.7	83.8	85.5	91.1
3	89.8	97.3	89.0	97.7	79.3	89.3	54.6	61.8	84.7	94.8	68.2	76.2	80.9	88.5
4	87.2	97.3	85.4	97.7	74.0	86.7	47.3	55.6	80.5	93.6	61.8	71.6	75.8	85.8
5	84.5	97.3	81.8	97.3	68.4	83.4	40.8	49.6	76.0	91.6	56.0	67.1	73.1	85.7
6	80.2	96.5	78.1	96.8	63.7	80.8	36.7	46.0	71.6	89.7	51.8	64.1	70.0	84.5
7	75.8	94.5	73.4	94.5	59.3	78.3	32.5	42.1	66.8	87.1	48.8	62.5	62.8	77.3
8	71.7	92.7	67.7	90.7	56.5	77.5	31.1	41.4	63.1	85.4	46.6	61.5	56.6	71.8
9	68.5	91.7	65.1	89.8	52.8	75.4	29.5	40.5	59.6	84.0	43.8	60.2	54.0	69.1
10	64.1	89.2	59.5	85.5	50.6	75.0	26.9	38.1	56.2	82.4	41.7	58.8	48.2	66.7
11	60.9	87.4	56.7	84.7	47.5	73.8	25.5	37.3	53.3	81.3	38.9	57.3	48.2	66.7
12	58.8	87.4	54.4	84.7	45.7	73.4	24.8	36.8	50.9	81.0	38.0	57.3	48.2	66.7
13	55.4	86.2	51.0	82.6	42.7	72.1	23.7	36.5	48.0	79.5	35.5	56.4		
14	52.1	84.7	48.2	81.6	39.3	69.0	23.7	34.1	44.8	77.5	33.5	54.7		

Years	TNM staging			
	M1 n=2,956		NA/NOS n=2,999	
	obs. %	rel. %	obs. %	rel. %
0	100.0	100.0	100.0	100.0
1	50.7	52.6	79.2	83.3
2	28.9	30.8	70.3	77.1
3	18.4	20.0	63.8	72.9
4	13.1	14.7	58.4	69.5
5	9.1	10.4	53.6	66.4
6	7.2	8.4	49.4	63.7
7	6.1	7.3	46.6	62.4
8	5.7	6.9	43.2	60.4
9	5.3	6.5	40.1	58.5
10	4.8	6.1	38.3	57.7
11			35.9	56.3
12			34.1	55.2
13			31.9	54.4
14			27.8	49.8

Table 4j. Observed (obs.) and relative (rel.) survival of patients with colon cancer by TNM staging for period 1998-2012 (N=17,660).

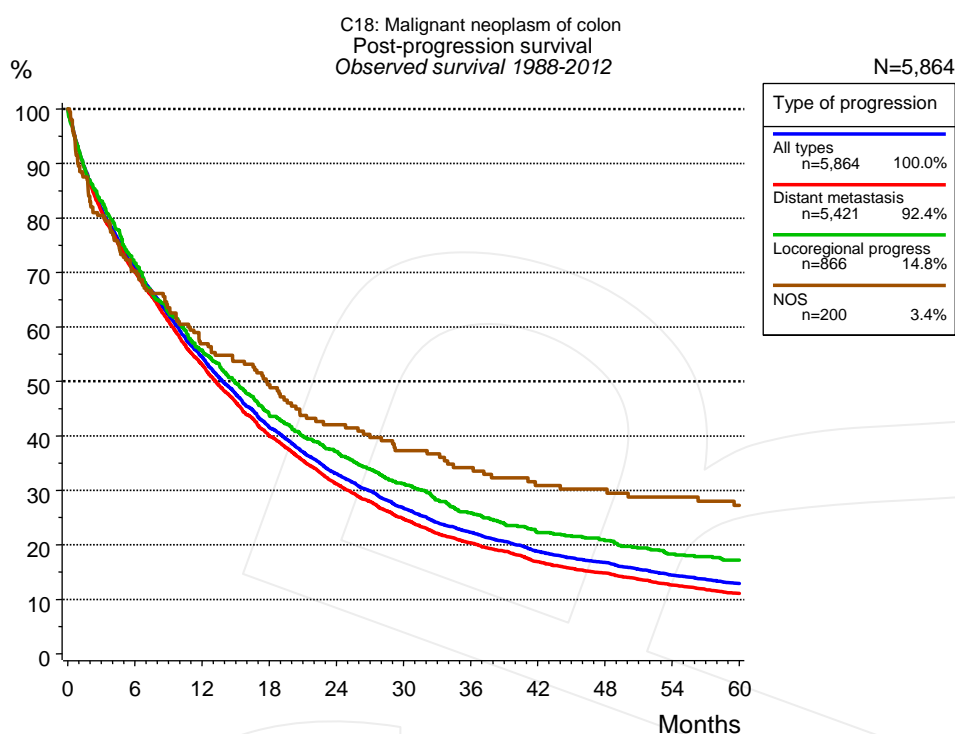


Figure 5a. Observed post-progression survival of 5,864 patients with colon cancer diagnosed between 1988 and 2012 (incl. M1). These 5,864 patients with documented progression events during their course of disease represent 31.4% of the totally 18,701 evaluated cases. Patients with cancer relapse documented via death certificates only were excluded (n=1,435, 7.7%). Multiple progression types on different sites are included in the evaluation even when not occurring synchronously. The NOS (not otherwise specified) class is included under the condition, that it is the one and only progression type during the course of disease.

Medical record documentation often lacks the linguistic severity to distinguish between local relapse, regional lymph node metastasis and distant spread in solid cancers. Frequently, the statement “not specified” is the only information in registries regarding relapse of the disease. The category “All types” denotes all cases who suffered from at least one relapse during the course of disease (incl. primary M1-status). Although, the real number of relapsed patients is likely to be much higher. The accumulated percentage of patients with local relapse or distant metastasis exceeds the 100% value because patients are potentially considered in more than one subgroup.

Months	Type of progression			
	All types n=5,864	Distant metastasis n=5,421	Locoregional progress n=866	NOS n=200
	%	%	%	%
0	100.0	100.0	100.0	100.0
12	54.5	53.1	55.5	56.9
24	33.0	31.2	37.1	42.1
36	22.3	20.3	25.9	34.2
48	16.7	14.8	20.8	30.2
60	12.9	11.1	17.2	27.2

Table 5b. Observed post-progression survival of patients with colon cancer for period 1988-2012 (N=5,864).

Shortcuts

AS	Assembled survival chart (observed, expected, relative)
CS	Conditional survival
DCO	Death certificate only. The death certificate provides the only notification to the registry.
MCR	Munich Cancer Registry, Germany (Tumorregister München)
NA	Not available
NCI	National Cancer Institute, USA
NOS	Not otherwise specified
OS	Observed/overall survival (Kaplan-Meier estimate)
PPS	Post-progression survival
RS	Relative Survival. Ratio of observed and expected survival (derived from the normal population)
SEER	Surveillance, Epidemiology, and End Results, USA
TTP	Time to progression Date of entry: Date of diagnosis Event (Progression): First local recurrence, lymph node relapse or distant metastasis, unspecified recurrence First all-cause recurrence is illustrated by survival curves (Kaplan-Meier estimate). First local recurrence, lymph node relapse or distant metastasis are depicted cumulatively, where applicable ("reverse" Kaplan-Meier estimate).
UICC	Union for International Cancer Control, Geneva

Recommended Citation

Munich Cancer Registry. Survival C18: Colon cancer [Internet]. 2014 [updated 2014 Mar 25; cited 2014 May 1]. Available from: http://www.tumorregister-muenchen.de/en/facts/surv/surv_C18__E.pdf

Copyright

The content of the public web site provided by the Munich Cancer Registry is available worldwide and free of charge. All documents are free to download, utilize, copy, print-out and distribute, providing that the MCR is referenced.

Disclaimer

The Munich Cancer Registry reserves the right to not be responsible for the topicality, correctness, completeness or quality of the information provided. Liability claims regarding damage caused by the use of any information provided, including any kind of information which is incomplete or incorrect, will therefore be rejected.

Index of figures and tables

Fig./Tbl.		Page
1a	Relative survival by period of diagnosis (chart)	2
1b	Survival by period of diagnosis (table)	3
2a	Survival by gender (chart)	3
2b	Survival by gender (table)	4
3a	Relative survival by age category (chart)	4
3b	Observed survival by age category (chart)	5
3c	Survival by age category (table)	5
4a	Relative survival by UICC 1988+ (chart)	6
4b	Survival by UICC 1988+ (table)	6
4c	Relative survival by UICC 1998+ (chart)	7
4d	Survival by UICC 1998+ (table)	7
4e	Conditional survival by UICC (chart)	8
4f	Conditional survival by UICC (table)	8
4g	Relative survival by TNM staging 1988+ (chart)	9
4h	Survival by TNM staging 1988+ (table)	9
4i	Relative survival by TNM staging 1998+ (chart)	10
4j	Survival by TNM staging 1998+ (table)	11
5a	Observed post-progression survival (chart)	12
5b	Observed post-progression survival (table)	12