

Munich Cancer Registry



- ▶ Baseline statistics
- ▶ Selection Matrix
- ▶ Homepage
- ▶ *Deutsch*

Munich Cancer Registry at Munich Cancer Center
Marchioninstr. 15
Munich, 81377
Germany

<http://www.tumorregister-muenchen.de/en>

Cancer statistics: Survival

C19, C20: Rectal cancer

Year of diagnosis	1988-2012
Patients	18,132
Diseases	18,151
Cases evaluated	10,987
Creation date	03/25/2014
Export date	02/12/2014
Population	4.5 m



http://www.tumorregister-muenchen.de/en/facts/surv/surv_C1920E.pdf

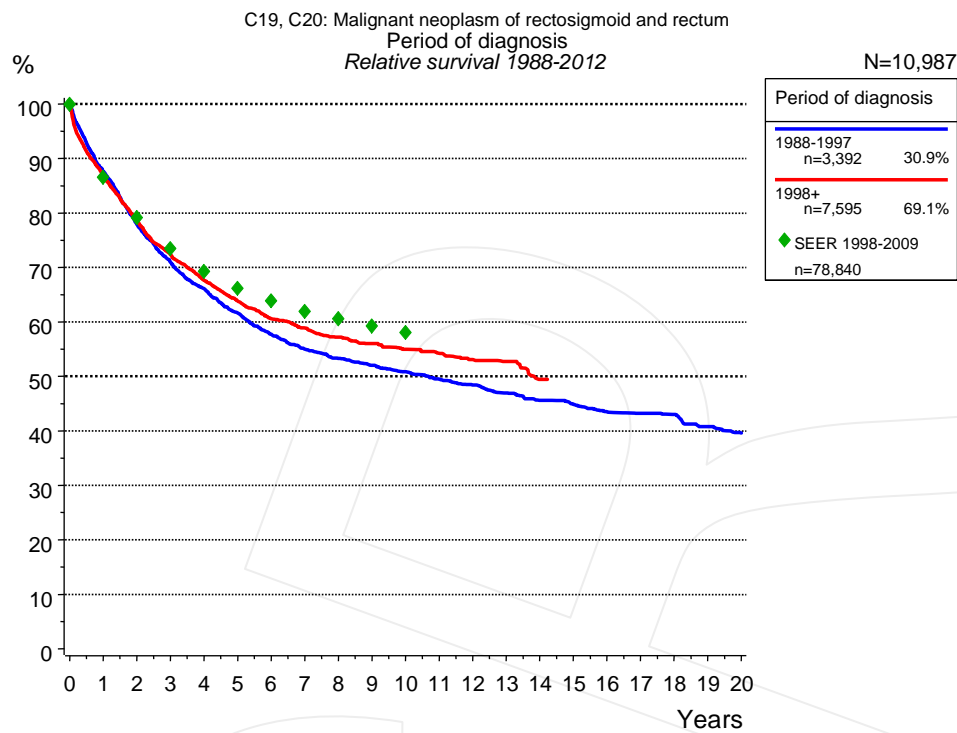


Figure 1a. Relative survival of patients with rectal cancer by period of diagnosis. Included in the evaluation are 10,987 cases diagnosed between 1988 and 2012.

The survival results of the SEER program (Surveillance, Epidemiology, and End Results) of the American National Cancer Institute (NCI) are summarized as the period of diagnosis from 1998 to 2009, and are represented by green diamonds in order to facilitate comparisons between MCR and SEER.

The presented survival curves are derived from clinical records with valid follow-up informations, which means that death certificate cases (DCO) cases are omitted from the analysis. With this one restriction, the MCR has provided population-based statistics since 1988, collecting data on all cancer cases in the region of southern Bavaria. Historical data of previous time periods can be heavily selected, therefore, univariate survival comparisons of the presented time periods must be carefully considered. Nonetheless, all calculable survival curves are depicted to facilitate the comparison of long time follow-up analyses of relative survival between particular cancers.

Years	Period of diagnosis			
	1988-1997		1998+	
	n=3,392		n=7,595	
	obs. %	rel. %	obs. %	rel. %
0	100.0	100.0	100.0	100.0
1	84.8	87.6	84.0	86.8
2	73.1	77.9	73.7	78.4
3	64.6	71.0	66.0	72.2
4	58.3	66.1	60.0	67.6
5	52.7	61.7	55.1	63.8
6	47.8	57.7	50.8	60.6
7	44.2	55.0	48.0	58.9
8	41.5	53.3	45.2	57.2
9	39.2	52.0	43.0	56.0
10	37.1	50.8	40.8	55.0
11	35.0	49.5	38.9	54.2
12	33.1	48.4	36.8	53.1
13	31.1	47.0	35.3	52.7
14	29.2	45.6	31.9	49.4
15	27.8	44.9		
16	26.1	43.5		
17	25.1	43.2		
18	24.1	43.1		
19	22.2	40.8		
20	20.6	39.6		

Table 1b. Observed (obs.) and relative (rel.) survival of patients with rectal cancer by period of diagnosis for period 1988-2012 (N=10,987).

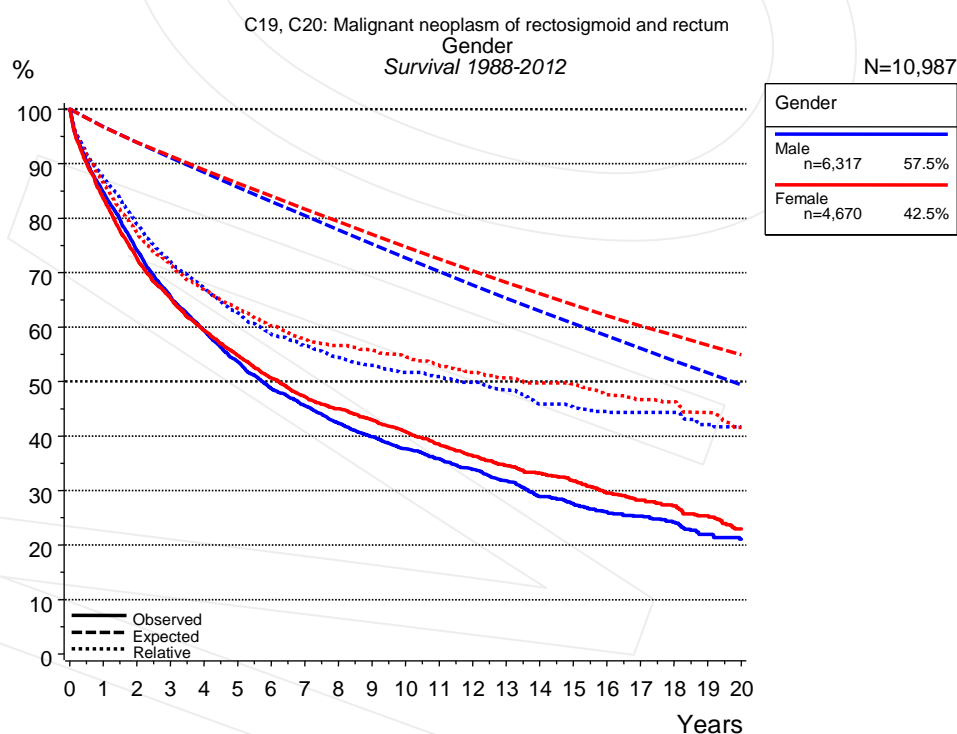


Figure 2a. Survival of patients with rectal cancer by gender. Included in the evaluation are 10,987 cases diagnosed between 1988 and 2012.

Years	Gender			
	Male n=6,317		Female n=4,670	
	obs. %	rel. %	obs. %	rel. %
0	100.0	100.0	100.0	100.0
1	84.7	87.5	83.6	86.4
2	74.1	78.9	72.6	77.3
3	65.6	72.0	65.3	71.4
4	59.4	67.2	59.4	66.8
5	53.7	62.6	54.8	63.4
6	48.7	58.7	50.6	60.2
7	45.6	56.6	47.2	57.8
8	42.4	54.5	45.0	56.6
9	39.9	52.9	43.0	55.8
10	37.6	51.7	40.8	54.6
11	35.8	50.9	38.5	52.9
12	33.9	49.9	36.3	51.6
13	31.8	48.5	34.6	50.7
14	28.9	45.8	33.2	49.7
15	27.5	45.3	31.8	49.6
16	26.1	44.5	29.5	47.5
17	25.3	44.3	28.3	46.7
18	24.2	44.3	27.2	46.3
19	22.0	42.1	25.4	44.3
20	21.1	41.7	23.0	41.5

Table 2b. Observed (obs.) and relative (rel.) survival of patients with rectal cancer by gender for period 1988-2012 (N=10,987).

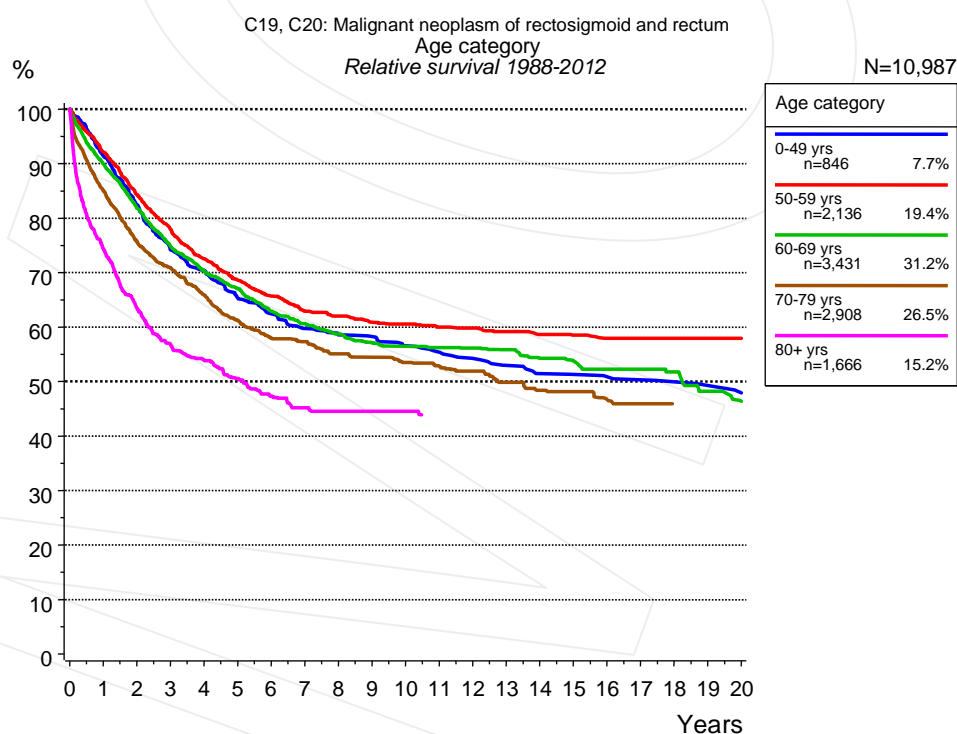


Figure 3a. Relative survival of patients with rectal cancer by age category. Included in the evaluation are 10,987 cases diagnosed between 1988 and 2012.

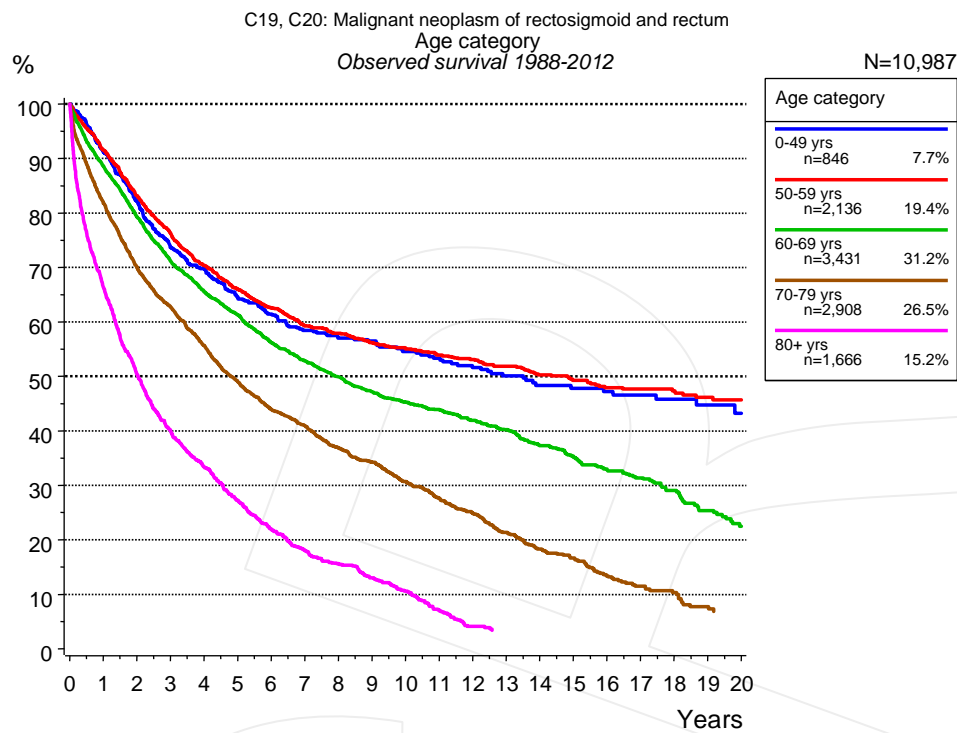


Figure 3b. Observed survival of patients with rectal cancer by age category. Included in the evaluation are 10,987 cases diagnosed between 1988 and 2012.

Years	Age category									
	0-49 yrs n=846		50-59 yrs n=2,136		60-69 yrs n=3,431		70-79 yrs n=2,908		80+ yrs n=1,666	
	obs. %	rel. %	obs. %	rel. %	obs. %	rel. %	obs. %	rel. %	obs. %	rel. %
0	100.0	100.0	100.0	100.0	100.0	100.0	100.0	100.0	100.0	100.0
1	91.3	91.4	91.5	92.2	88.6	90.0	81.8	85.0	66.4	74.4
2	82.1	82.5	83.1	84.3	79.3	81.9	70.0	75.6	50.5	63.5
3	73.6	74.2	76.3	78.0	71.2	74.8	62.7	70.8	40.1	56.9
4	69.8	70.4	70.4	72.5	65.6	70.2	55.6	65.9	33.4	54.0
5	64.4	65.4	66.0	68.6	61.3	67.1	49.0	61.2	27.3	50.6
6	61.4	62.5	62.6	65.7	56.2	62.9	43.9	58.0	22.0	47.4
7	58.4	59.8	59.3	62.9	52.9	60.6	40.9	57.3	18.0	45.2
8	57.0	58.6	57.9	62.0	49.9	58.7	36.9	55.1	15.6	44.6
9	56.5	58.2	56.2	60.9	47.1	57.1	34.2	54.4	13.0	44.6
10	54.5	56.6	55.0	60.5	45.3	56.5	30.7	53.5	10.6	44.6
11	53.3	55.4	53.9	60.0	43.9	56.3	27.7	52.8		
12	51.6	54.2	53.1	59.8	41.9	56.1	24.8	51.9		
13	50.1	53.0	51.8	59.2	40.2	55.9	21.4	49.8		
14	48.3	51.5	50.3	58.7	37.3	54.3	18.3	48.4		
15	47.8	51.3	49.3	58.6	35.1	53.7	16.7	48.1		
16	47.2	50.9	47.9	58.0	33.0	52.2	13.4	46.7		
17	46.6	50.3	47.7	58.0	31.4	52.2	11.5	45.9		
18	45.8	49.9	47.3	58.0	29.1	51.8	10.3	45.9		
19	44.7	49.3	46.1	58.0	25.4	48.2				
20	43.2	47.9	45.7	58.0	22.5	46.4				

Table 3c. Observed (obs.) and relative (rel.) survival of patients with rectal cancer by age category for period 1988-2012 (N=10,987).

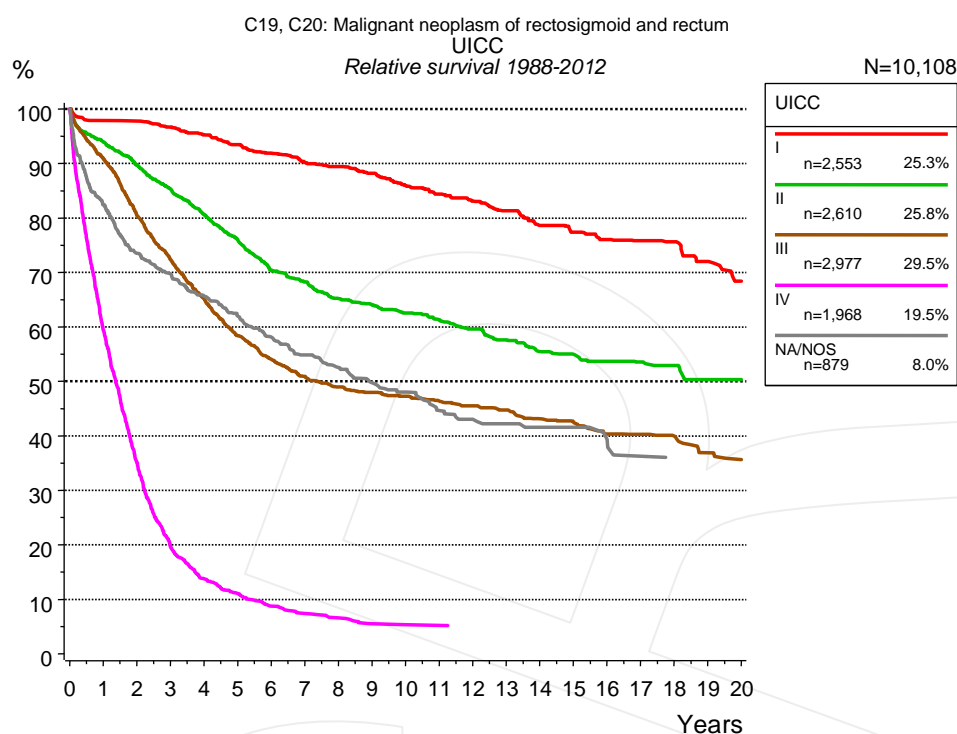


Figure 4a. Relative survival of patients with rectal cancer by UICC. For 10,259 of 10,987 cases diagnosed between 1988 and 2012 valid data could be obtained for this item. For a total of 10,108 cases an evaluable classification was established. The grey line represents the subgroup of 879 patients with missing values regarding UICC (8.0% of 10,987 patients, the percent values of all other categories are related to n=10,108).

Years	UICC									
	I		II		III		IV		NA/NOS	
	n=2,553		n=2,610		n=2,977		n=1,968		n=879	
	obs. %	rel. %	obs. %	rel. %	obs. %	rel. %	obs. %	rel. %	obs. %	rel. %
0	100.0	100.0	100.0	100.0	100.0	100.0	100.0	100.0	100.0	100.0
1	95.1	97.8	90.7	93.9	88.2	90.9	57.6	59.4	78.7	82.4
2	91.9	97.8	83.9	89.7	75.9	80.5	33.3	35.1	67.7	73.5
3	88.1	96.7	77.5	85.3	66.4	72.3	18.3	19.6	62.4	69.7
4	83.9	95.2	71.0	80.6	58.1	65.1	12.5	13.7	57.1	65.6
5	79.9	93.4	64.9	76.0	50.8	58.4	9.8	11.0	52.5	62.0
6	76.0	91.9	58.3	70.4	45.7	54.0	7.6	8.7	48.0	58.1
7	72.1	90.2	54.8	68.3	41.9	50.9	6.3	7.4	44.3	54.9
8	69.4	89.5	50.7	65.2	39.2	49.0	5.7	6.6	41.2	52.5
9	66.1	88.2	48.1	64.0	37.2	48.0	4.5	5.5	38.0	49.7
10	62.1	85.9	45.5	62.5	35.8	47.2	4.3	5.3	35.7	48.0
11	59.2	84.4	43.1	61.3	34.0	46.4	4.3	5.2	32.1	44.7
12	56.2	83.1	40.5	59.6	32.4	45.5			29.8	43.0
13	53.2	81.3	37.8	57.6	30.7	44.7			28.6	42.2
14	49.6	78.7	35.1	55.5	28.7	43.1			27.5	41.6
15	47.3	77.4	33.6	55.0	27.3	42.5			26.7	41.6
16	44.8	76.0	31.8	53.7	25.2	40.4			25.0	39.3
17	43.3	75.8	30.4	53.6	24.6	40.3			22.3	36.3
18	41.7	75.6	29.1	52.9	23.6	39.9			20.9	35.9
19	38.4	72.0	27.0	50.3	21.1	36.9			20.9	35.2
20	35.0	68.4	25.5	50.3	19.9	35.7				

Table 4b. Observed (obs.) and relative (rel.) survival of patients with rectal cancer by UICC for period 1988-2012 (N=10,108).

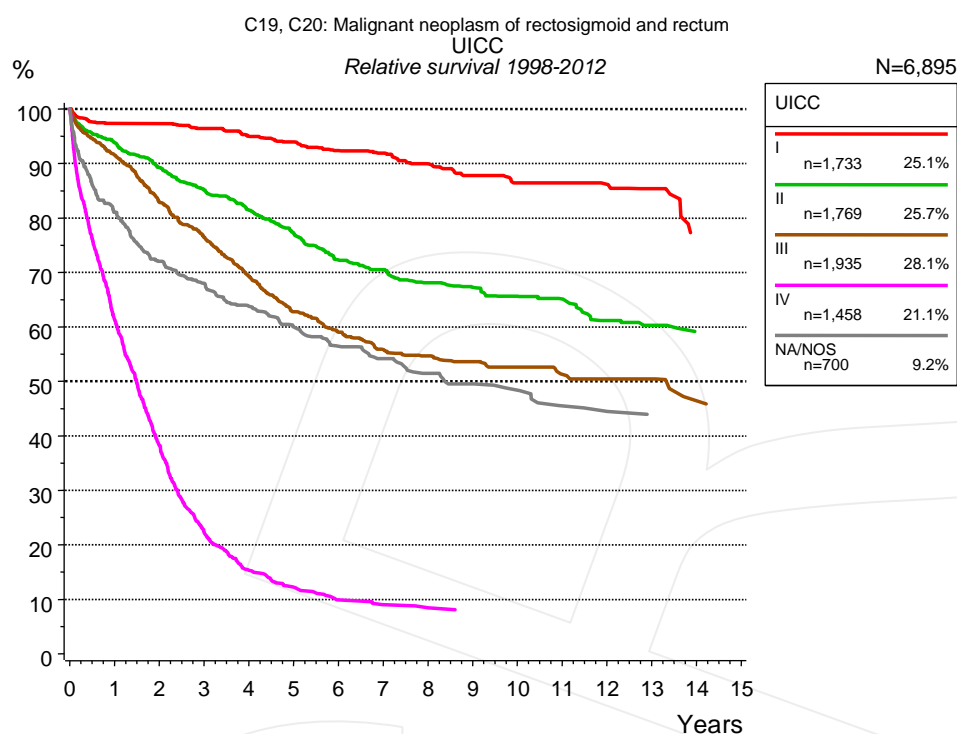


Figure 4c. Relative survival of patients with rectal cancer by UICC. For 7,016 of 7,595 cases diagnosed between 1998 and 2012 valid data could be obtained for this item. For a total of 6,895 cases an evaluable classification was established. The grey line represents the subgroup of 700 patients with missing values regarding UICC (9.2% of 7,595 patients, the percent values of all other categories are related to n=6,895).

Years	UICC									
	I		II		III		IV		NA/NOS	
	n=1,733		n=1,769		n=1,935		n=1,458		n=700	
	obs. %	rel. %	obs. %	rel. %	obs. %	rel. %	obs. %	rel. %	obs. %	rel. %
0	100.0	100.0	100.0	100.0	100.0	100.0	100.0	100.0	100.0	100.0
1	94.5	97.3	90.6	93.8	89.0	91.5	59.5	61.3	77.4	81.0
2	91.7	97.3	83.5	89.2	78.3	82.9	36.3	38.2	66.4	72.0
3	87.9	96.4	77.4	85.1	70.4	76.5	20.7	22.2	61.1	68.0
4	83.8	95.0	71.9	81.5	62.1	69.3	14.1	15.3	55.7	63.8
5	80.4	93.9	66.2	77.2	54.8	62.7	11.0	12.3	51.2	60.0
6	76.4	92.4	60.2	72.3	50.4	59.0	8.7	9.9	47.1	56.5
7	73.6	91.9	57.0	70.6	46.3	55.8	7.8	9.0	44.2	54.2
8	69.7	89.9	53.4	68.1	44.2	54.7	7.5	8.5	40.9	51.5
9	66.1	87.8	50.9	67.3	42.5	53.6	6.7	7.9	38.8	49.5
10	62.6	86.4	48.0	65.6	40.4	52.6			37.0	48.4
11	60.8	86.4	46.1	65.1	37.8	51.3			33.5	45.5
12	58.4	86.2	41.7	61.2	36.8	50.5			31.7	44.5
13	55.9	85.4	39.6	60.3	36.1	50.5				
14					31.2	46.5				

Table 4d. Observed (obs.) and relative (rel.) survival of patients with rectal cancer by UICC for period 1998-2012 (N=6,895).

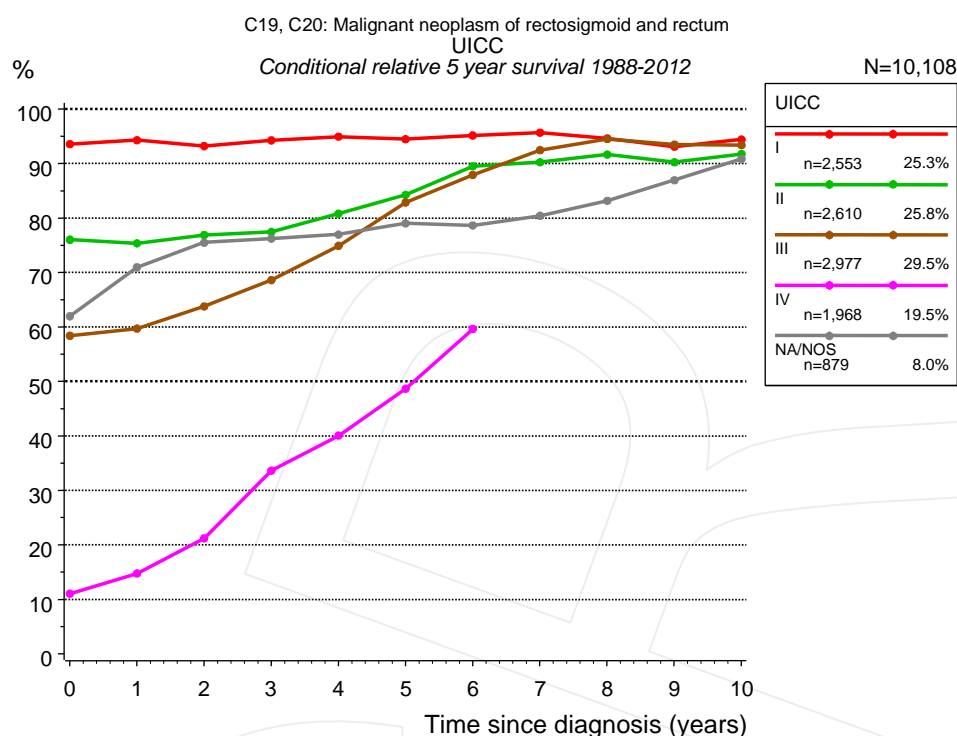


Figure 4e. Conditional relative 5-year survival of patients with rectal cancer by UICC. For 10,259 of 10,987 cases diagnosed between 1988 and 2012 valid data could be obtained for this item. For a total of 10,108 cases an evaluable classification was established. The grey line represents the subgroup of 879 patients with missing values regarding UICC (8.0% of 10,987 patients, the percent values of all other categories are related to n=10,108).

UICC										
Years	I		II		III		IV		NA/NOS	
	n	Cond. surv. % 5 yrs	n	Cond. surv. % 5 yrs	n	Cond. surv. % 5 yrs	n	Cond. surv. % 5 yrs	n	Cond. surv. % 5 yrs
0	2,553	93.6	2,610	76.0	2,977	58.4	1,968	11.0	879	62.0
1	2,332	94.3	2,239	75.3	2,496	59.7	1,044	14.8	666	70.9
2	2,095	93.2	1,936	76.9	1,979	63.8	546	21.2	540	75.5
3	1,844	94.3	1,656	77.4	1,577	68.6	265	33.6	464	76.2
4	1,613	94.9	1,389	80.8	1,252	74.9	158	40.1	387	77.0
5	1,353	94.5	1,157	84.3	964	82.9	104	48.7	327	79.0
6	1,145	95.1	940	89.5	777	87.9	71	59.6	275	78.6
7	1,003	95.7	816	90.2	641	92.5			221	80.4
8	907	94.6	691	91.7	554	94.5			180	83.1
9	789	93.1	589	90.2	477	93.5			138	86.9
10	673	94.4	516	91.7	408	93.4			114	90.8

Table 4f. Conditional relative 5-year survival of patients with rectal cancer by UICC for period 1988-2012 (N=10,108).

Conditional relative survival rates refer to the relative survival probability, in this case for 5 years after cancer diagnosis, compared to the age- and sex-matched population (=100%) under the condition of being alive for a certain time period (x-axis in Figure 4c). The results illustrate to what extent the cancer induced mortality of particular subgroups declines in the subsequent years after detection of the malignancy. For instance, according to the presented survival statistics, patients in the subgroup UICC="I", who are alive at least 3 years after cancer diagnosis, the conditional relative 5-year survival rate is 94.3% (n=1,844).

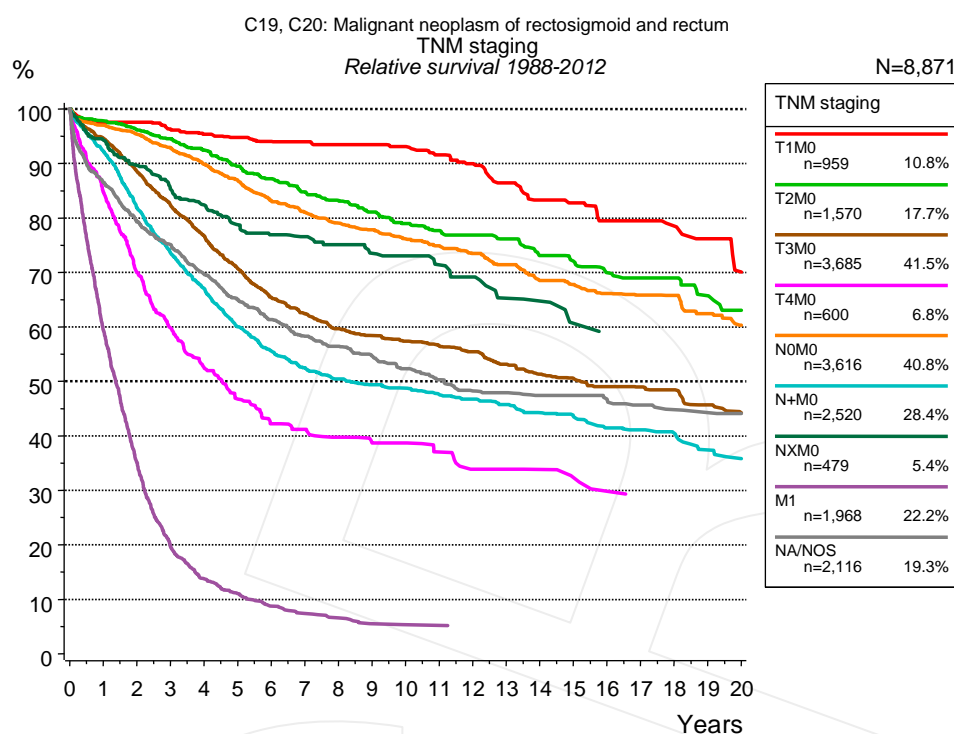


Figure 4g. Relative survival of patients with rectal cancer by TNM staging. For 10,259 of 10,987 cases diagnosed between 1988 and 2012 valid data could be obtained for this item. For a total of 8,871 cases an evaluable classification was established. The accumulated percentage exceeds the 100% value because patients are potentially considered in more than one subgroup. The grey line represents the subgroup of 2,116 patients with missing values regarding TNM staging (19.3% of 10,987 patients, the percent values of all other categories are related to n=8,871).

Years	TNM staging													
	T1M0 n=959		T2M0 n=1,570		T3M0 n=3,685		T4M0 n=600		N0M0 n=3,616		N+M0 n=2,520		NXM0 n=479	
	obs. %	rel. %	obs. %	rel. %	obs. %	rel. %	obs. %	rel. %	obs. %	rel. %	obs. %	rel. %	obs. %	rel. %
0	100.0	100.0	100.0	100.0	100.0	100.0	100.0	100.0	100.0	100.0	100.0	100.0	100.0	100.0
1	95.3	97.6	94.9	97.8	91.8	94.6	81.8	84.7	94.2	97.0	89.6	92.2	91.3	94.3
2	92.8	97.6	90.5	96.1	83.4	88.5	65.4	70.0	89.8	95.4	77.3	81.8	84.2	89.6
3	88.9	96.3	86.4	94.5	75.4	82.3	54.4	59.8	85.0	92.9	67.6	73.5	77.8	85.3
4	85.5	95.4	81.9	92.4	68.2	76.7	46.2	52.4	79.7	89.8	60.0	67.0	73.3	82.4
5	82.8	94.8	77.0	89.5	61.1	70.8	40.4	46.8	74.8	87.0	52.3	60.0	68.1	78.7
6	79.6	94.0	72.9	87.2	54.9	65.4	35.2	42.2	69.4	83.2	47.2	55.5	64.7	76.9
7	77.1	94.0	68.6	84.8	50.9	62.4	33.7	41.2	65.5	81.0	43.4	52.5	62.7	76.6
8	75.2	93.4	65.2	83.2	47.1	59.6	31.5	39.8	61.9	79.0	40.6	50.5	59.8	75.1
9	72.9	93.4	61.6	81.1	44.7	58.4	29.7	38.7	58.9	77.8	38.6	49.4	56.3	73.5
10	69.5	93.1	58.0	79.0	42.5	57.4	29.3	38.7	55.7	76.2	37.1	48.7	54.0	73.0
11	66.2	91.6	55.4	77.7	40.6	56.5	27.0	37.0	53.0	74.9	35.2	47.6	51.2	71.4
12	63.1	90.0	52.9	76.9	38.5	55.5	24.0	33.9	50.3	73.5	33.5	46.7	48.7	69.2
13	58.8	86.5	50.8	76.2	35.5	53.1	24.0	33.9	47.3	71.4	31.7	45.8	43.8	65.3
14	54.7	83.3	46.9	73.1	33.1	51.3	23.2	33.8	43.7	68.5	29.7	44.2	42.5	64.8
15	52.6	82.7	44.6	72.0	31.4	50.5	21.4	32.3	41.7	67.8	28.2	43.5	38.0	60.7
16	48.9	79.4	41.8	69.9	29.7	49.1	19.6	29.8	39.3	66.1	26.2	41.4	35.8	58.9
17	48.9	79.4	40.2	69.0	28.5	49.0	18.5	29.0	37.8	65.8	25.4	41.1	35.8	57.7
18	45.3	78.5	39.4	69.0	27.5	48.5	18.5	28.4	36.4	65.8	24.3	40.4	35.8	56.5
19	42.2	76.2	36.0	65.7	24.8	45.7	18.5	27.8	33.6	62.4	21.7	37.4		
20	37.3	70.0	33.5	63.1	23.1	44.2			31.0	60.3	20.4	35.8		

cont'd Years	TNM staging			
	M1 n=1,968		NA/NOS n=2,116	
	obs. %	rel. %	obs. %	rel. %
0	100.0	100.0	100.0	100.0
1	57.6	59.4	82.9	86.5
2	33.3	35.1	73.2	79.3
3	18.3	19.6	67.1	75.1
4	12.5	13.7	60.2	69.6
5	9.8	11.0	54.4	65.0
6	7.6	8.7	49.7	61.3
7	6.3	7.4	45.7	58.3
8	5.7	6.6	42.9	56.4
9	4.5	5.5	40.2	54.7
10	4.3	5.3	37.3	52.3
11	4.3	5.2	34.7	50.3
12			32.1	48.3
13			31.0	47.9
14			29.6	47.4
15			28.8	47.4
16			27.3	46.7
17			25.6	45.7
18			24.2	44.8
19			23.0	44.3
20			22.3	44.1

Table 4h. Observed (obs.) and relative (rel.) survival of patients with rectal cancer by TNM staging for period 1988-2012 (N=15,397).

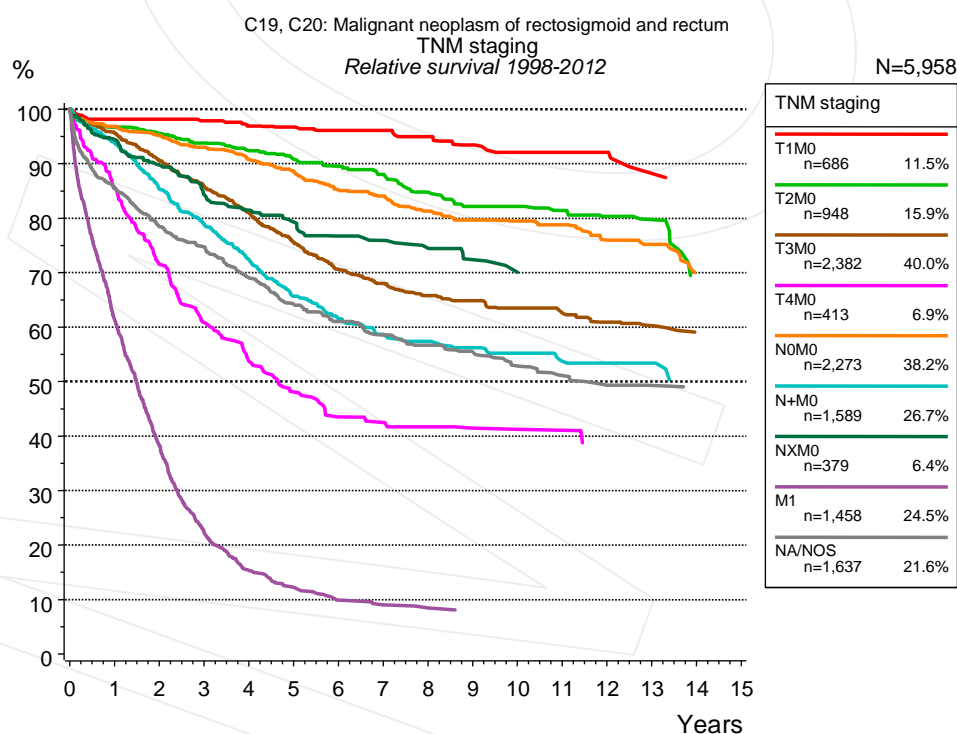


Figure 4i. Relative survival of patients with rectal cancer by TNM staging. For 7,016 of 7,595 cases diagnosed between 1998 and 2012 valid data could be obtained for this item. For a total of 5,958 cases an evaluable classification was established. The accumulated percentage exceeds the 100% value because patients are potentially considered in more than one subgroup. The grey line represents the subgroup of 1,637 patients with missing values regarding TNM staging (21.6% of 7,595 patients, the percent values of all other categories are related to n=5,958).

TNM staging															
Years	T1M0 n=686		T2M0 n=948		T3M0 n=2,382		T4M0 n=413		N0M0 n=2,273		N+M0 n=1,589		NXM0 n=379		
	obs. %	rel. %	obs. %	rel. %	obs. %	rel. %	obs. %	rel. %	obs. %	rel. %	obs. %	rel. %	obs. %	rel. %	
0	100.0	100.0	100.0	100.0	100.0	100.0	100.0	100.0	100.0	100.0	100.0	100.0	100.0	100.0	
1	95.9	98.1	93.9	96.7	92.8	95.6	83.0	85.6	93.9	96.8	91.3	93.8	91.7	94.4	
2	94.1	98.1	90.0	95.5	85.4	90.6	67.3	71.6	89.6	95.2	80.9	85.4	84.6	89.7	
3	90.2	97.8	86.0	93.8	78.7	85.8	55.8	60.8	85.1	93.0	72.8	78.8	77.4	84.3	
4	86.6	96.9	82.2	92.4	72.3	81.0	47.9	53.7	80.6	90.7	65.1	72.4	73.1	81.4	
5	84.1	96.7	78.5	90.8	65.6	75.6	41.9	48.1	76.3	88.6	57.6	65.6	69.3	79.3	
6	81.2	96.1	75.2	89.5	59.7	70.6	36.8	43.5	71.2	85.2	52.8	61.6	65.4	76.7	
7	79.2	96.1	71.8	88.0	56.0	68.0	35.6	42.5	68.1	84.0	49.1	58.6	63.5	75.9	
8	75.6	94.9	67.0	84.8	52.5	65.8	34.3	41.7	63.8	81.3	46.7	57.4	60.7	74.4	
9	71.8	93.4	63.1	82.1	50.6	64.9	32.4	41.5	61.0	79.6	44.9	56.2	57.0	72.3	
10	68.0	92.1	61.3	82.1	47.6	63.5	32.4	41.2	58.3	79.4	43.2	55.2	53.0	70.1	
11	66.8	92.1	58.6	81.4	45.4	62.6	31.1	41.1	56.2	78.8	40.0	53.7	53.0	70.1	
12	65.4	92.1	55.8	80.3	42.6	60.9			51.9	76.0	39.4	53.4	53.0	70.1	
13	59.5	88.2	53.9	79.7	40.8	60.2			49.5	75.2	38.5	53.4			

TNM staging				
Years	M1 n=1,458		NA/NOS n=1,637	
	obs. %	rel. %	obs. %	rel. %
0	100.0	100.0	100.0	100.0
1	59.5	61.3	81.8	85.4
2	36.3	38.2	72.4	78.4
3	20.7	22.2	66.8	74.7
4	14.1	15.3	59.7	69.0
5	11.0	12.3	53.8	64.2
6	8.7	9.9	49.7	61.0
7	7.8	9.0	46.1	58.5
8	7.5	8.5	43.7	56.6
9	6.7	7.9	41.2	55.5
10			38.2	52.9
11			35.7	51.1
12			33.2	49.3
13			32.4	49.3
14			31.0	47.4

Table 4j. Observed (obs.) and relative (rel.) survival of patients with rectal cancer by TNM staging for period 1998-2012 (N=10,128).

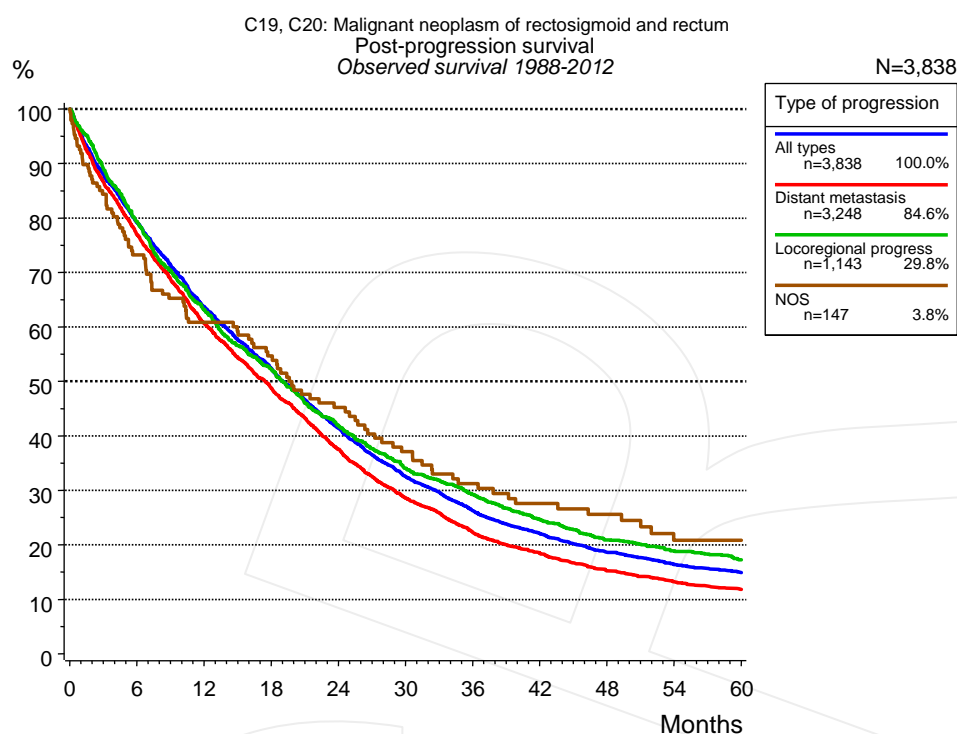


Figure 5a. Observed post-progression survival of 3,838 patients with rectal cancer diagnosed between 1988 and 2012 (incl. M1). These 3,838 patients with documented progression events during their course of disease represent 34.9% of the totally 10,987 evaluated cases. Patients with cancer relapse documented via death certificates only were excluded (n=821, 7.5%). Multiple progression types on different sites are included in the evaluation even when not occurring synchronously. The NOS (not otherwise specified) class is included under the condition, that it is the one and only progression type during the course of disease.

Medical record documentation often lacks the linguistic severity to distinguish between local relapse, regional lymph node metastasis and distant spread in solid cancers. Frequently, the statement “not specified” is the only information in registries regarding relapse of the disease. The category “All types” denotes all cases who suffered from at least one relapse during the course of disease (incl. primary M1-status). Although, the real number of relapsed patients is likely to be much higher. The accumulated percentage of patients with local relapse or distant metastasis exceeds the 100% value because patients are potentially considered in more than one subgroup.

Months	Type of progression			
	All types n=3,838	Distant metastasis n=3,248	Locoregional progress n=1,143	NOS n=147
	%	%	%	%
0	100.0	100.0	100.0	100.0
12	63.6	60.6	63.0	60.8
24	41.4	37.5	41.8	45.2
36	26.3	22.2	29.2	31.3
48	18.6	15.2	20.9	25.6
60	14.9	11.8	17.3	20.8

Table 5b. Observed post-progression survival of patients with rectal cancer for period 1988-2012 (N=3,838).

Shortcuts

AS	Assembled survival chart (observed, expected, relative)
CS	Conditional survival
DCO	Death certificate only. The death certificate provides the only notification to the registry.
MCR	Munich Cancer Registry, Germany (Tumorregister München)
NA	Not available
NCI	National Cancer Institute, USA
NOS	Not otherwise specified
OS	Observed/overall survival (Kaplan-Meier estimate)
PPS	Post-progression survival
RS	Relative Survival. Ratio of observed and expected survival (derived from the normal population)
SEER	Surveillance, Epidemiology, and End Results, USA
TTP	Time to progression Date of entry: Date of diagnosis Event (Progression): First local recurrence, lymph node relapse or distant metastasis, unspecified recurrence First all-cause recurrence is illustrated by survival curves (Kaplan-Meier estimate). First local recurrence, lymph node relapse or distant metastasis are depicted cumulatively, where applicable ("reverse" Kaplan-Meier estimate).
UICC	Union for International Cancer Control, Geneva

Recommended Citation

Munich Cancer Registry. Survival C19, C20: Rectal cancer [Internet]. 2014 [updated 2014 Mar 25; cited 2014 May 1]. Available from: http://www.tumorregister-muenchen.de/en/facts/surv/surv_C1920E.pdf

Copyright

The content of the public web site provided by the Munich Cancer Registry is available worldwide and free of charge. All documents are free to download, utilize, copy, print-out and distribute, providing that the MCR is referenced.

Disclaimer

The Munich Cancer Registry reserves the right to not be responsible for the topicality, correctness, completeness or quality of the information provided. Liability claims regarding damage caused by the use of any information provided, including any kind of information which is incomplete or incorrect, will therefore be rejected.

Index of figures and tables

Fig./Tbl.	Page
1a Relative survival by period of diagnosis (chart)	2
1b Survival by period of diagnosis (table)	3
2a Survival by gender (chart)	3
2b Survival by gender (table)	4
3a Relative survival by age category (chart)	4
3b Observed survival by age category (chart)	5
3c Survival by age category (table)	5
4a Relative survival by UICC 1988+ (chart)	6
4b Survival by UICC 1988+ (table)	6
4c Relative survival by UICC 1998+ (chart)	7
4d Survival by UICC 1998+ (table)	7
4e Conditional survival by UICC (chart)	8
4f Conditional survival by UICC (table)	8
4g Relative survival by TNM staging 1988+ (chart)	9
4h Survival by TNM staging 1988+ (table)	9
4i Relative survival by TNM staging 1998+ (chart)	10
4j Survival by TNM staging 1998+ (table)	11
5a Observed post-progression survival (chart)	12
5b Observed post-progression survival (table)	12