

# Munich Cancer Registry



- ▶ Baseline statistics
- ▶ Selection Matrix
- ▶ Homepage
- ▶ *Deutsch*

Munich Cancer Registry at Munich Cancer Center  
Marchioninstr. 15  
Munich, 81377  
Germany

<http://www.tumorregister-muenchen.de/en>

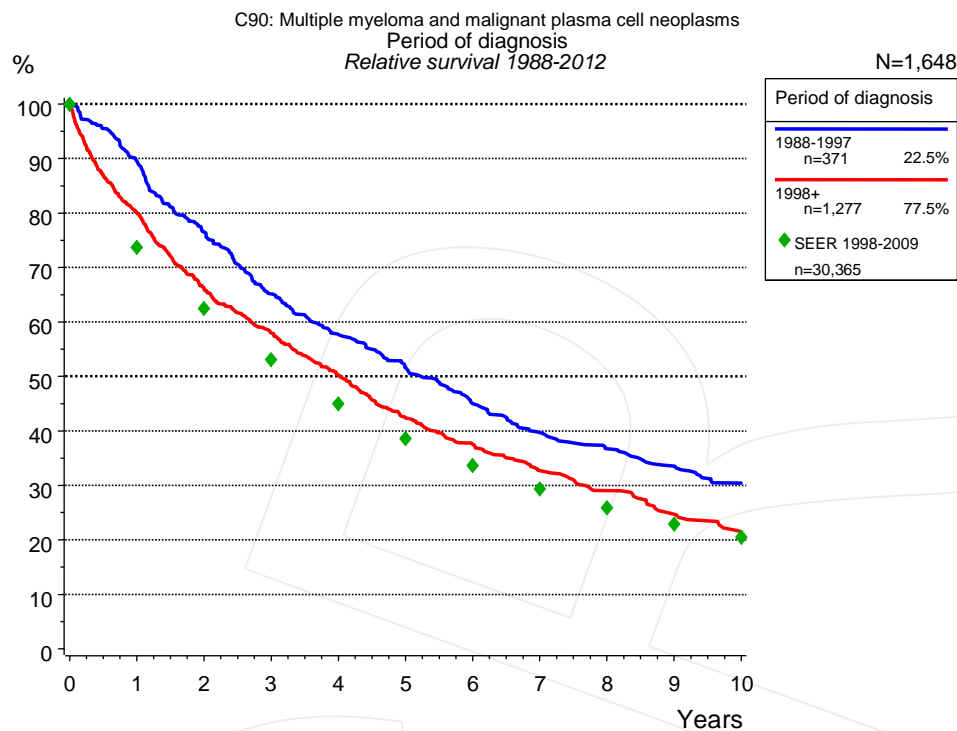
## Cancer statistics: Survival

### C90: Plasmacytoma

Year of diagnosis	1988-2012
Patients	3,683
Diseases	3,685
Cases evaluated	1,648
Creation date	03/25/2014
Export date	02/12/2014
Population	4.5 m



[http://www.tumorregister-muenchen.de/en/facts/surv/surv\\_C90\\_\\_E.pdf](http://www.tumorregister-muenchen.de/en/facts/surv/surv_C90__E.pdf)



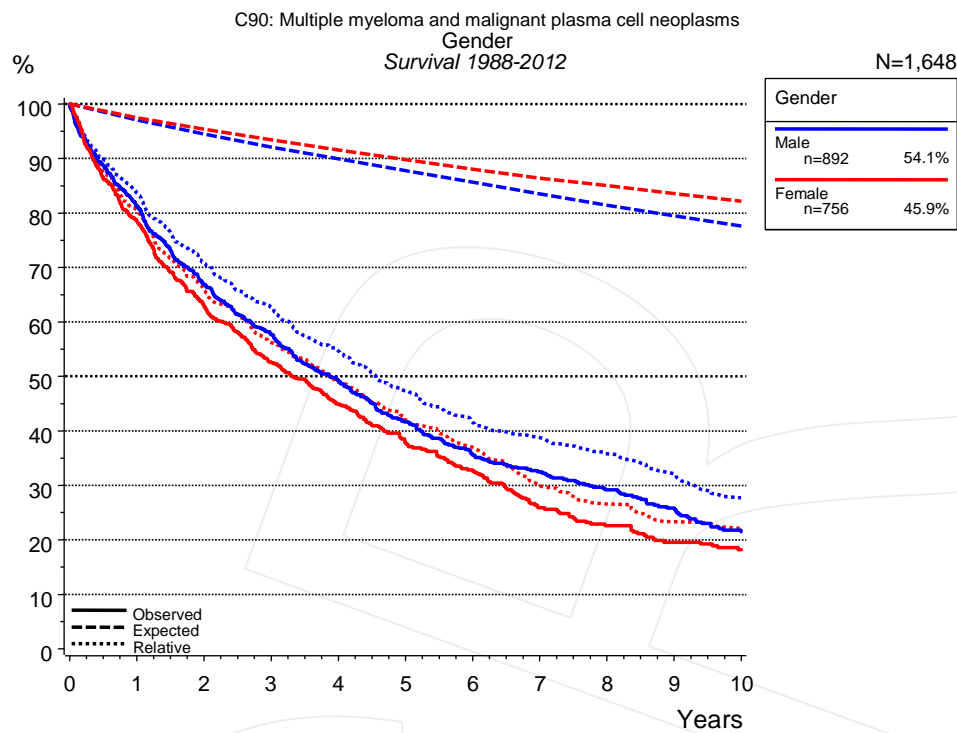
**Figure 1a.** Relative survival of patients with plasmacytoma by period of diagnosis. Included in the evaluation are 1,648 cases diagnosed between 1988 and 2012.

The survival results of the SEER program (Surveillance, Epidemiology, and End Results) of the American National Cancer Institute (NCI) are summarized as the period of diagnosis from 1998 to 2009, and are represented by green diamonds in order to facilitate comparisons between MCR and SEER.

The presented survival curves are derived from clinical records with valid follow-up informations, which means that death certificate cases (DCO) cases are omitted from the analysis. With this one restriction, the MCR has provided population-based statistics since 1988, collecting data on all cancer cases in the region of southern Bavaria. Historical data of previous time periods can be heavily selected, therefore, univariate survival comparisons of the presented time periods must be carefully considered. Nonetheless, all calculable survival curves are depicted to facilitate the comparison of long time follow-up analyses of relative survival between particular cancers.

Years	Period of diagnosis			
	1988-1997 n=371		1998+ n=1,277	
	obs. %	rel. %	obs. %	rel. %
0	100.0	100.0	100.0	100.0
1	87.3	89.5	77.9	80.0
2	73.0	76.5	62.6	66.0
3	60.7	65.1	53.8	57.9
4	52.5	57.7	45.5	50.3
5	45.9	51.6	37.6	42.4
6	39.1	45.0	32.5	37.5
7	33.9	39.7	27.8	32.7
8	30.6	36.7	24.2	29.0
9	27.6	33.5	20.3	24.7
10	24.3	30.4	17.2	21.4

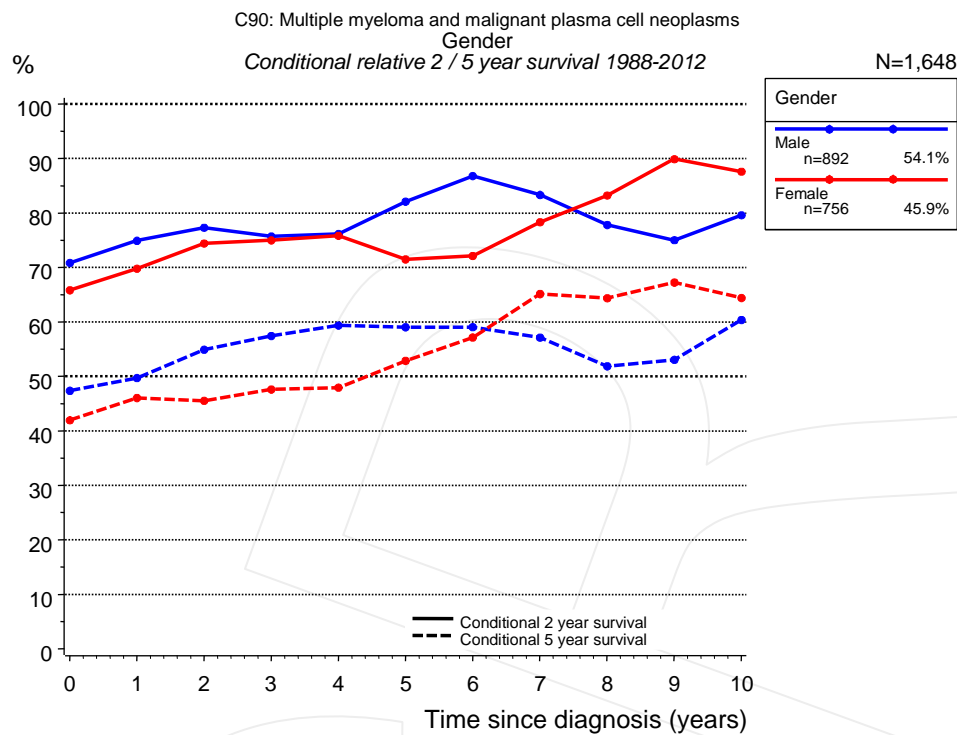
**Table 1b.** Observed (obs.) and relative (rel.) survival of patients with plasmacytoma by period of diagnosis for period 1988-2012 (N=1,648).



**Figure 2a.** Survival of patients with plasmacytoma by gender. Included in the evaluation are 1,648 cases diagnosed between 1988 and 2012.

Years	Gender			
	Male n=892		Female n=756	
	obs. %	rel. %	obs. %	rel. %
0	100.0	100.0	100.0	100.0
1	81.2	83.6	78.6	80.5
2	66.9	70.8	62.9	65.8
3	57.8	62.6	52.5	56.2
4	49.1	54.6	44.9	48.9
5	41.6	47.4	37.7	42.0
6	35.5	41.5	32.6	37.0
7	32.5	38.7	25.9	29.8
8	29.2	35.8	22.6	26.6
9	25.8	32.2	19.6	23.3
10	21.5	27.7	18.2	22.0

**Table 2b.** Observed (obs.) and relative (rel.) survival of patients with plasmacytoma by gender for period 1988-2012 (N=1,648).

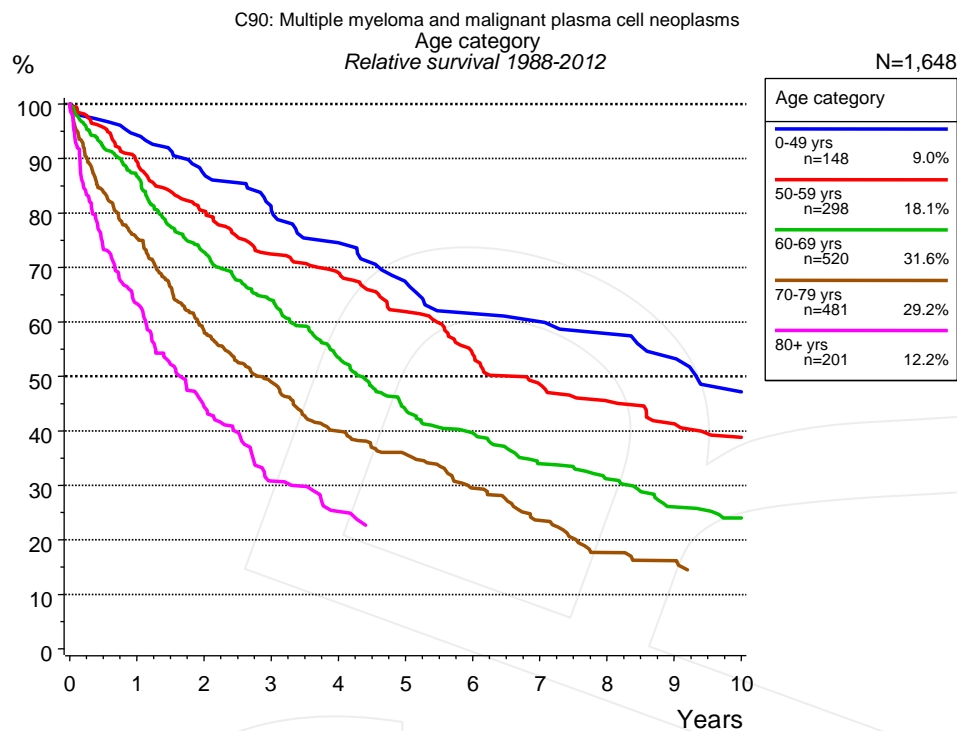


**Figure 2c.** Conditional relative 2 / 5-year survival of patients with plasmacytoma by gender. For 1,648 of 1,648 cases diagnosed between 1988 and 2012 valid data could be obtained for this item.

Years	Gender					
	Male			Female		
	n	Cond. surv. % 2 yrs	5 yrs	n	Cond. surv. % 2 yrs	5 yrs
0	892	70.8	47.4	756	65.8	42.0
1	675	74.9	49.7	556	69.8	46.0
2	515	77.3	54.9	414	74.4	45.5
3	391	75.7	57.4	320	75.0	47.6
4	297	76.2	59.4	249	75.8	47.9
5	219	82.1	59.0	183	71.5	52.9
6	167	86.8	59.0	136	72.1	57.2
7	143	83.3	57.1	101	78.3	65.1
8	118	77.8	51.8	78	83.2	64.4
9	93	75.0	53.0	61	89.9	67.2
10	70	79.6	60.4	52	87.6	64.4

**Table 2d.** Conditional relative 2 / 5-year survival of patients with plasmacytoma by gender for period 1988-2012 (N=1,648).

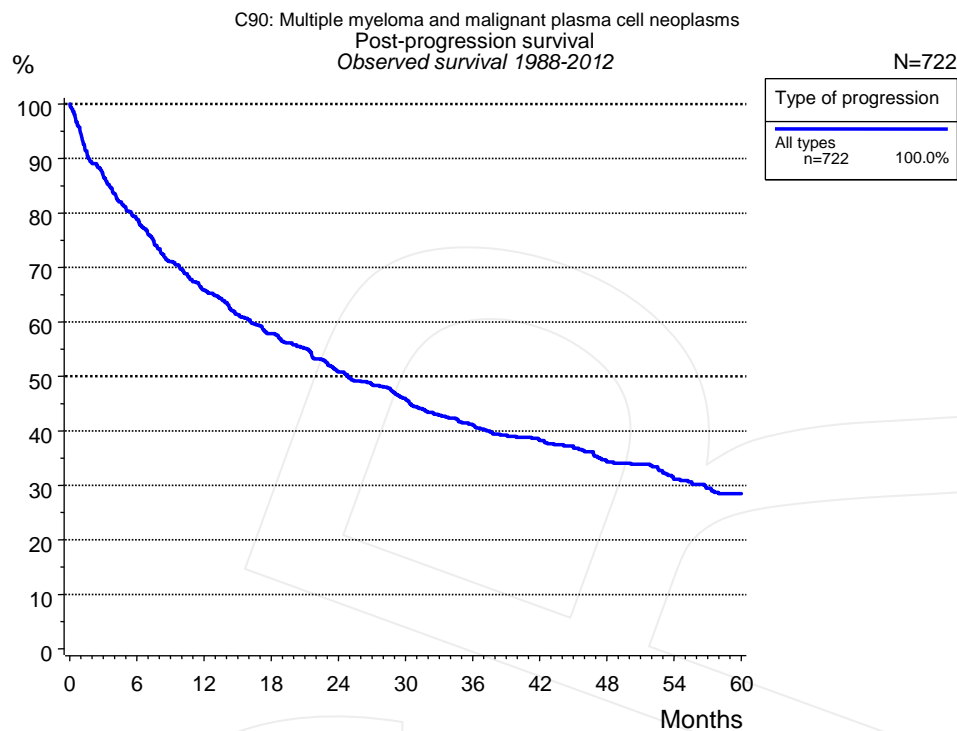
Conditional relative survival rates refer to the relative survival probability, in this case for 2 and 5 years after cancer diagnosis, compared to the age- and sex-matched population (=100%) under the condition of being alive for a certain time period (x-axis in Figure 2a). The results illustrate to what extent the cancer induced mortality of particular subgroups declines in the subsequent years after detection of the malignancy. For instance, according to the presented survival statistics, patients in the subgroup gender="Male", who are alive at least 3 years after cancer diagnosis, the conditional relative 2-year survival rate is 75.7% (n=391).



**Figure 3a.** Relative survival of patients with plasmacytoma by age category. Included in the evaluation are 1,648 cases diagnosed between 1988 and 2012.

		Age category									
		0-49 yrs n=148		50-59 yrs n=298		60-69 yrs n=520		70-79 yrs n=481		80+ yrs n=201	
Years		obs. %	rel. %	obs. %	rel. %	obs. %	rel. %	obs. %	rel. %	obs. %	rel. %
0		100.0	100.0	100.0	100.0	100.0	100.0	100.0	100.0	100.0	100.0
1		94.5	94.3	89.1	89.4	85.6	86.7	72.7	75.3	58.0	63.3
2		87.1	87.1	79.5	80.4	70.7	72.8	54.0	58.1	37.1	44.4
3		80.6	80.6	70.9	72.4	61.2	64.0	43.7	49.0	22.9	30.8
4		73.7	74.5	67.2	69.0	50.2	53.4	34.0	40.0	17.0	25.2
5		66.5	67.3	59.5	61.9	40.4	43.9	28.8	35.7		
6		61.0	61.5	51.6	54.1	35.7	39.6	22.5	29.5		
7		59.8	60.1	46.0	48.5	29.9	34.0	17.0	23.6		
8		57.3	57.8	42.5	45.5	26.8	31.2	12.0	17.6		
9		53.1	53.3	38.8	41.3	21.8	26.0	10.5	16.2		
10		47.0	47.1	35.9	38.8	19.6	24.0				

**Table 3b.** Observed (obs.) and relative (rel.) survival of patients with plasmacytoma by age category for period 1988-2012 (N=1,648).



**Figure 5a.** Observed post-progression survival of 722 patients with plasmacytoma diagnosed between 1988 and 2012 (incl. M1). These 722 patients with documented progression events during their course of disease represent 43.8% of the totally 1,648 evaluated cases. Patients with cancer relapse documented via death certificates only were excluded (n=312, 18.9%).

Medical record documentation often lacks the linguistic severity to distinguish between local relapse, regional lymph node metastasis and distant spread in solid cancers. Frequently, the statement “not specified” is the only information in registries regarding relapse of the disease. The category “All types” denotes all cases who suffered from at least one relapse during the course of disease (incl. primary M1-status). Although, the real number of relapsed patients is likely to be much higher. The accumulated percentage of patients with local relapse or distant metastasis exceeds the 100% value because patients are potentially considered in more than one subgroup.

Type of progression	
All types n=722	
Months	%
0	100.0
12	65.8
24	50.8
36	41.1
48	34.3
60	28.5

**Table 5b.** Observed post-progression survival of patients with plasmacytoma for period 1988-2012 (N=722).

**Shortcuts**

AS	Assembled survival chart (observed, expected, relative)
CS	Conditional survival
DCO	Death certificate only. The death certificate provides the only notification to the registry.
MCR	Munich Cancer Registry, Germany (Tumorregister München)
NA	Not available
NCI	National Cancer Institute, USA
NOS	Not otherwise specified
OS	Observed/overall survival (Kaplan-Meier estimate)
PPS	Post-progression survival
RS	Relative Survival. Ratio of observed and expected survival (derived from the normal population)
SEER	Surveillance, Epidemiology, and End Results, USA
TTP	Time to progression Date of entry: Date of diagnosis Event (Progression): First local recurrence, lymph node relapse or distant metastasis, unspecified recurrence First all-cause recurrence is illustrated by survival curves (Kaplan-Meier estimate). First local recurrence, lymph node relapse or distant metastasis are depicted cumulatively, where applicable ("reverse" Kaplan-Meier estimate).
UICC	Union for International Cancer Control, Geneva

**Recommended Citation**

Munich Cancer Registry. Survival C90: Plasmacytoma [Internet]. 2014 [updated 2014 Mar 25; cited 2014 May 1]. Available from: [http://www.tumorregister-muenchen.de/en/facts/surv/surv\\_C90\\_\\_E.pdf](http://www.tumorregister-muenchen.de/en/facts/surv/surv_C90__E.pdf)

**Copyright**

The content of the public web site provided by the Munich Cancer Registry is available worldwide and free of charge. All documents are free to download, utilize, copy, print-out and distribute, providing that the MCR is referenced.

**Disclaimer**

The Munich Cancer Registry reserves the right to not be responsible for the topicality, correctness, completeness or quality of the information provided. Liability claims regarding damage caused by the use of any information provided, including any kind of information which is incomplete or incorrect, will therefore be rejected.

**Index of figures and tables**

Fig./Tbl.		Page
1a	Relative survival by period of diagnosis (chart)	2
1b	Survival by period of diagnosis (table)	2
2a	Survival by gender (chart)	3
2b	Survival by gender (table)	3
2c	Conditional survival by gender (chart)	4
2d	Conditional survival by gender (table)	4
3a	Relative survival by age category (chart)	5
3b	Survival by age category (table)	5
5a	Observed post-progression survival (chart)	6
5b	Observed post-progression survival (table)	6