

Munich Cancer Registry



- ▶ Baseline statistics
- ▶ Selection Matrix
- ▶ Homepage
- ▶ *Deutsch*

Munich Cancer Registry at Munich Cancer Center
Marchioninstr. 15
Munich, 81377
Germany

<http://www.tumorregister-muenchen.de/en>

Cancer statistics: Survival

GI-NET: Gastroint. neuroend. tumor

Year of diagnosis	1988-2012
Patients	1,722
Diseases	1,735
Cases evaluated	853
Creation date	03/25/2014
Export date	02/12/2014
Population	4.5 m



http://www.tumorregister-muenchen.de/en/facts/surv/surv_hGNETE.pdf

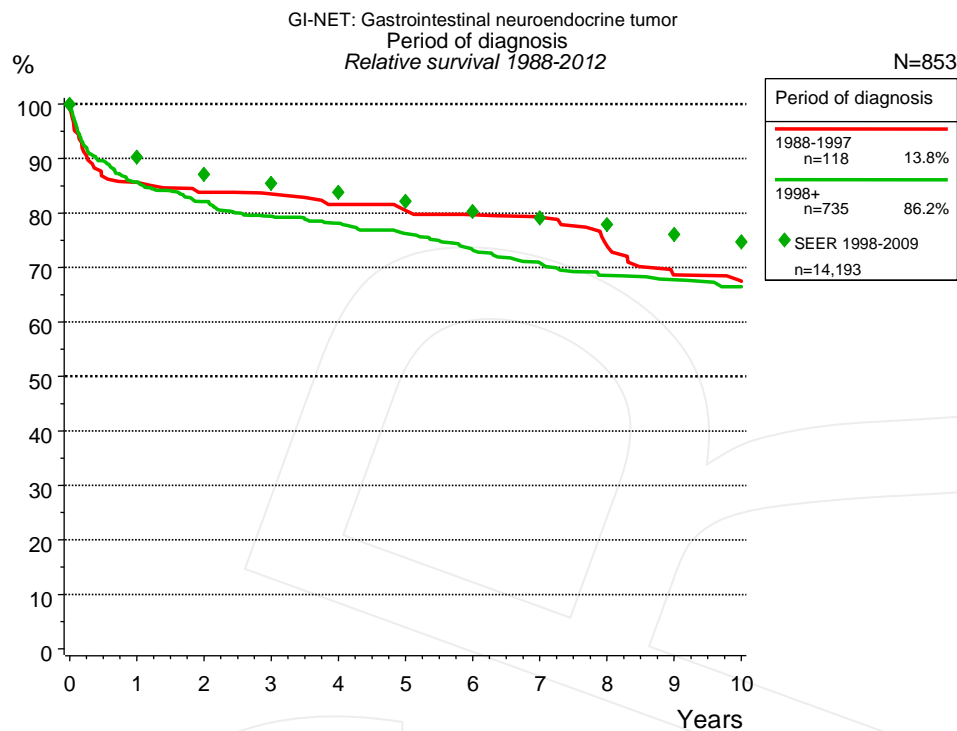


Figure 1a. Relative survival of patients with gastroint. neuroend. tumor by period of diagnosis. Included in the evaluation are 853 cases diagnosed between 1988 and 2012.

The presented survival curves are derived from clinical records with valid follow-up informations, which means that death certificate cases (DCO) cases are omitted from the analysis. With this one restriction, the MCR has provided population-based statistics since 1988, collecting data on all cancer cases in the region of southern Bavaria. Historical data of previous time periods can be heavily selected, therefore, univariate survival comparisons of the presented time periods must be carefully considered. Nonetheless, all calculable survival curves are depicted to facilitate the comparison of long time follow-up analyses of relative survival between particular cancers.

Years	Period of diagnosis			
	1988-1997 n=118		1998+ n=735	
	obs. %	rel. %	obs. %	rel. %
0	100.0	100.0	100.0	100.0
1	83.1	85.6	84.0	85.7
2	79.7	83.8	79.0	82.1
3	78.0	83.5	75.2	79.4
4	74.6	81.6	72.7	78.1
5	72.0	80.5	69.6	76.2
6	70.3	79.7	65.7	73.2
7	68.5	79.2	62.4	70.8
8	63.3	73.9	59.2	68.6
9	57.2	68.6	57.6	67.8
10	55.4	67.5	55.3	66.4

Table 1b. Observed (obs.) and relative (rel.) survival of patients with gastroint. neuroend. tumor by period of diagnosis for period 1988-2012 (N=853).

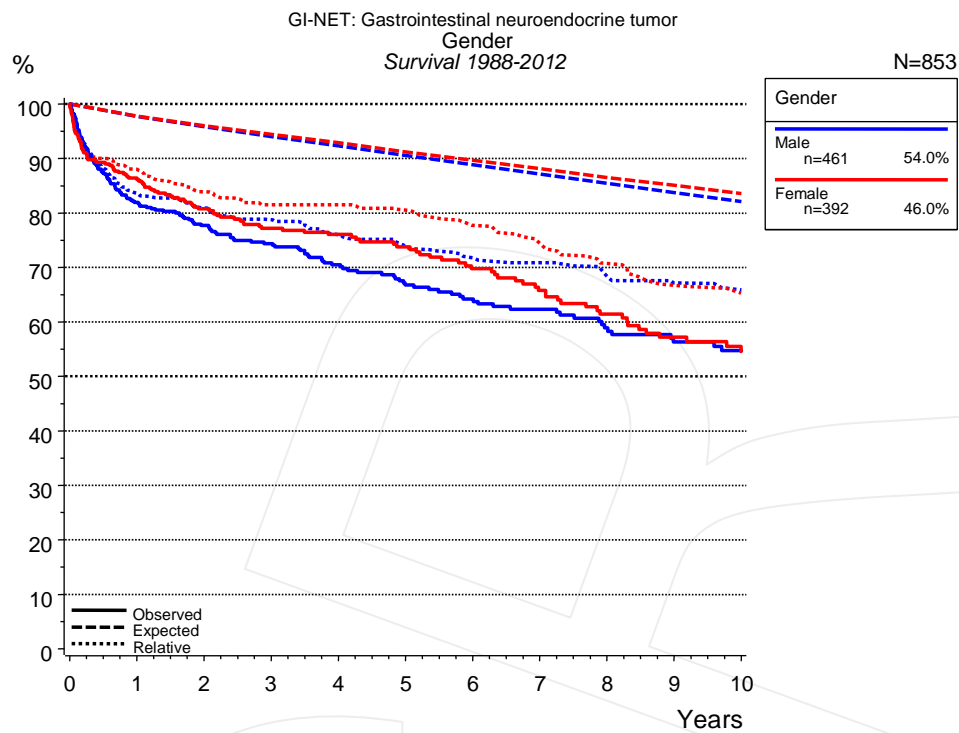


Figure 2a. Survival of patients with gastroint. neuroend. tumor by gender. Included in the evaluation are 853 cases diagnosed between 1988 and 2012.

Years	Gender			
	Male n=461		Female n=392	
	obs. %	rel. %	obs. %	rel. %
0	100.0	100.0	100.0	100.0
1	81.9	83.6	86.1	88.0
2	77.7	80.9	80.7	83.9
3	74.3	78.8	77.2	81.5
4	70.5	76.0	76.0	81.5
5	66.7	73.7	73.8	80.5
6	64.2	71.8	69.7	77.7
7	62.3	70.9	65.8	74.4
8	58.9	68.3	61.4	70.7
9	56.3	67.2	57.2	66.7
10	54.7	65.9	54.5	65.3

Table 2b. Observed (obs.) and relative (rel.) survival of patients with gastroint. neuroend. tumor by gender for period 1988-2012 (N=853).

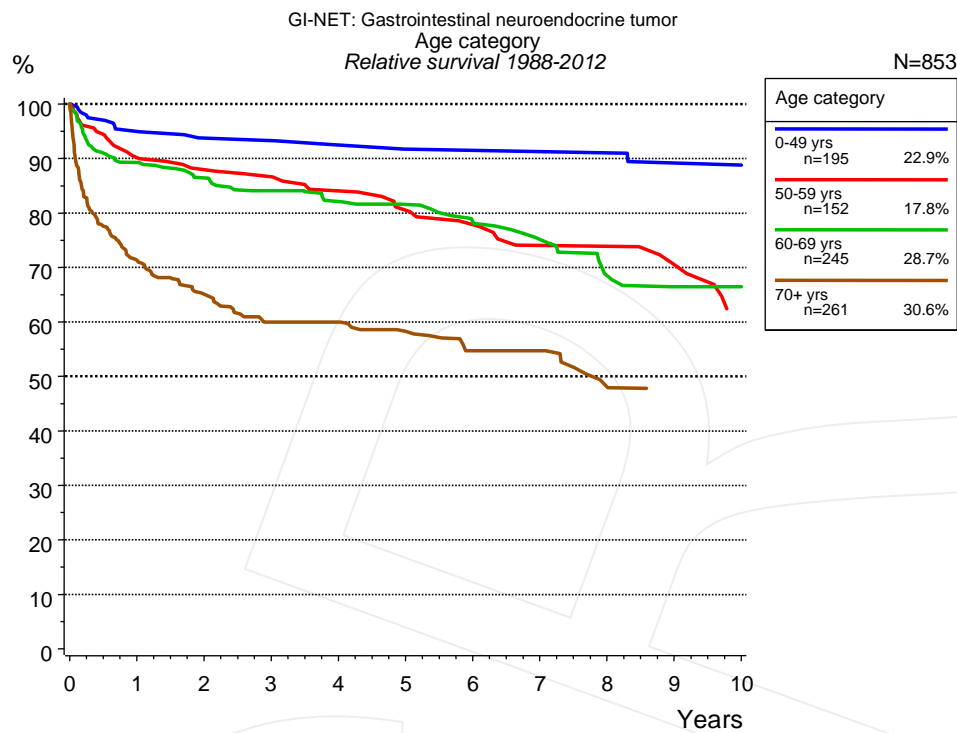


Figure 3a. Relative survival of patients with gastroint. neuroend. tumor by age category. Included in the evaluation are 853 cases diagnosed between 1988 and 2012.

Years	Age category							
	0-49 yrs n=195		50-59 yrs n=152		60-69 yrs n=245		70+ yrs n=261	
	obs. %	rel. %	obs. %	rel. %	obs. %	rel. %	obs. %	rel. %
0	100.0	100.0	100.0	100.0	100.0	100.0	100.0	100.0
1	95.3	95.0	90.0	90.1	88.4	89.3	67.4	71.4
2	93.5	93.7	87.2	88.0	84.3	86.4	58.7	65.1
3	93.5	93.3	85.7	86.7	80.7	84.1	51.1	60.0
4	91.9	92.5	82.3	84.0	77.6	82.1	48.5	60.0
5	90.9	91.7	78.4	80.5	75.5	81.6	43.5	58.3
6	90.9	91.5	75.2	77.8	71.4	78.3	38.6	54.7
7	90.9	91.3	70.4	74.0	66.8	75.2	36.7	54.7
8	90.9	91.0	70.4	73.9	59.4	68.5	30.4	48.0
9	87.9	89.2	65.5	70.5	55.9	66.5	28.0	47.8
10	87.9	88.8	57.3	62.2	55.9	66.5		

Table 3b. Observed (obs.) and relative (rel.) survival of patients with gastroint. neuroend. tumor by age category for period 1988-2012 (N=853).

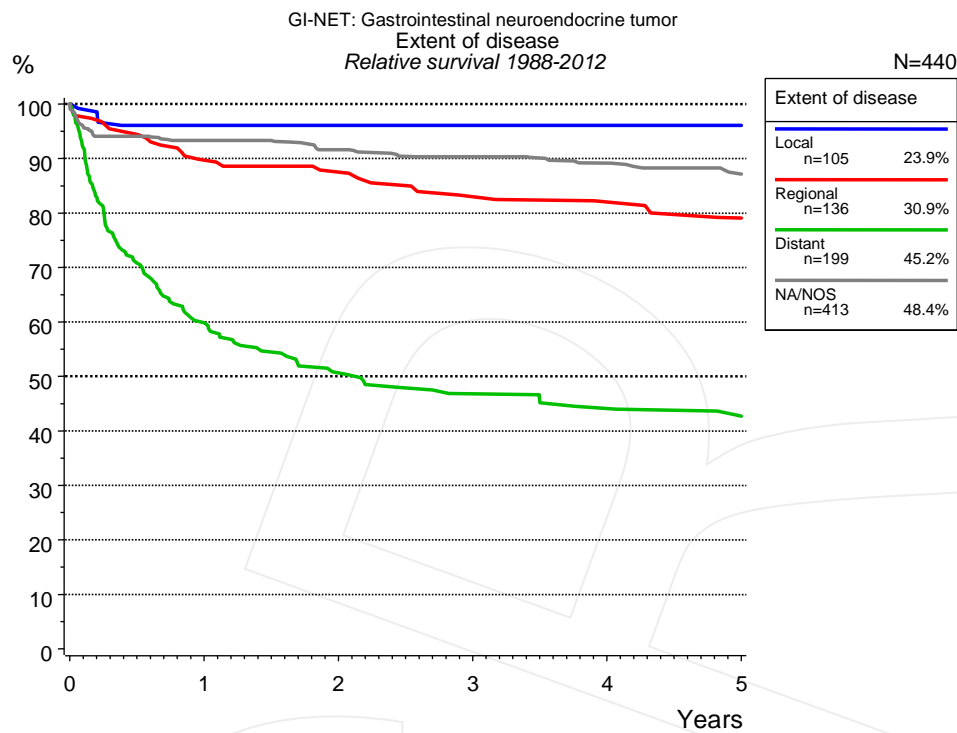


Figure 4a. Relative survival of patients with gastroint. neuroend. tumor by extent of disease. For 578 of 853 cases diagnosed between 1988 and 2012 valid data could be obtained for this item. For a total of 440 cases an evaluable classification was established. The grey line represents the subgroup of 413 patients with missing values regarding extent of disease (48.4% of 853 patients, the percent values of all other categories are related to n=440).

Years	Extent of disease							
	Local n=105		Regional n=136		Distant n=199		NA/NOS n=413	
	obs. %	rel. %	obs. %	rel. %	obs. %	rel. %	obs. %	rel. %
0	100.0	100.0	100.0	100.0	100.0	100.0	100.0	100.0
1	95.2	96.1	88.0	89.7	58.5	59.8	91.7	93.3
2	93.2	96.1	84.7	87.5	49.0	50.6	88.0	91.6
3	92.0	96.1	78.9	83.0	44.5	46.8	85.3	90.3
4	89.1	96.1	76.5	82.0	41.7	44.1	82.8	89.1
5	89.1	96.1	72.4	79.0	39.3	42.7	79.1	87.2

Table 4b. Observed (obs.) and relative (rel.) survival of patients with gastroint. neuroend. tumor by extent of disease for period 1988-2012 (N=440).

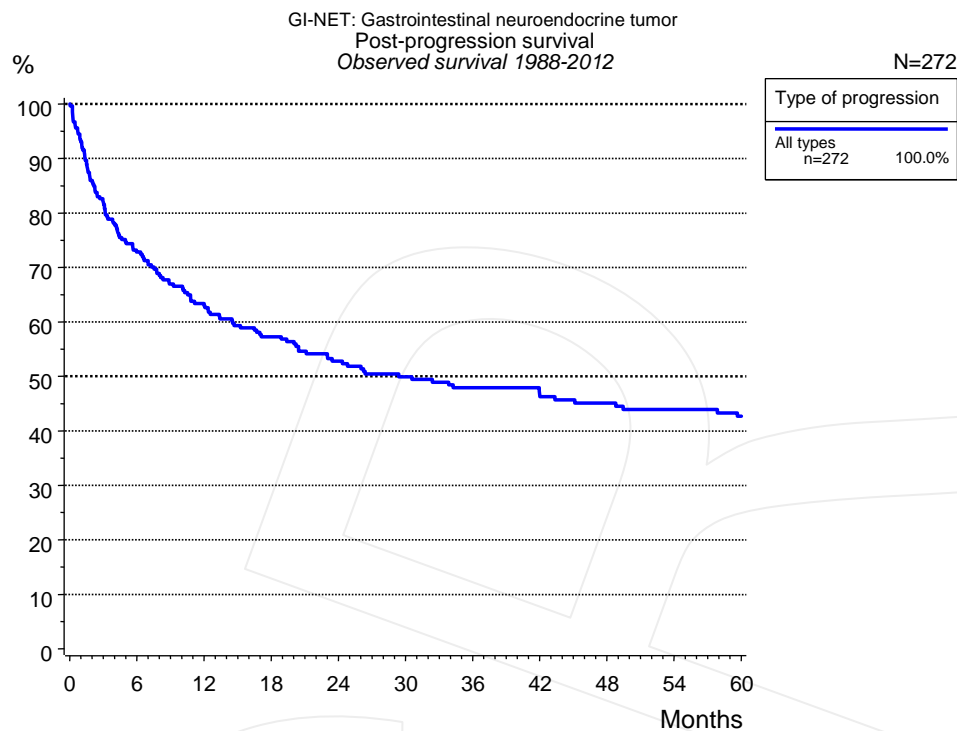


Figure 5a. Observed post-progression survival of 272 patients with gastroint. neuroend. tumor diagnosed between 1988 and 2012 (incl. M1). These 272 patients with documented progression events during their course of disease represent 31.9% of the totally 853 evaluated cases. Patients with cancer relapse documented via death certificates only were excluded (n=27, 3.2%).

Medical record documentation often lacks the linguistic severity to distinguish between local relapse, regional lymph node metastasis and distant spread in solid cancers. Frequently, the statement “not specified” is the only information in registries regarding relapse of the disease. The category “All types” denotes all cases who suffered from at least one relapse during the course of disease (incl. primary M1-status). Although, the real number of relapsed patients is likely to be much higher. The accumulated percentage of patients with local relapse or distant metastasis exceeds the 100% value because patients are potentially considered in more than one subgroup.

Type of progression	
All types n=272	
Months	%
0	100.0
12	63.0
24	52.8
36	47.9
48	45.1
60	42.7

Table 5b. Observed post-progression survival of patients with gastroint. neuroend. tumor for period 1988-2012 (N=272).

Shortcuts

AS	Assembled survival chart (observed, expected, relative)
CS	Conditional survival
DCO	Death certificate only. The death certificate provides the only notification to the registry.
MCR	Munich Cancer Registry, Germany (Tumorregister München)
NA	Not available
NCI	National Cancer Institute, USA
NOS	Not otherwise specified
OS	Observed/overall survival (Kaplan-Meier estimate)
PPS	Post-progression survival
RS	Relative Survival. Ratio of observed and expected survival (derived from the normal population)
SEER	Surveillance, Epidemiology, and End Results, USA
TTP	Time to progression Date of entry: Date of diagnosis Event (Progression): First local recurrence, lymph node relapse or distant metastasis, unspecified recurrence First all-cause recurrence is illustrated by survival curves (Kaplan-Meier estimate). First local recurrence, lymph node relapse or distant metastasis are depicted cumulatively, where applicable ("reverse" Kaplan-Meier estimate).
UICC	Union for International Cancer Control, Geneva

Recommended Citation

Munich Cancer Registry. Survival GI-NET: Gastroint. neuroend. tumor [Internet]. 2014 [updated 2014 Mar 25; cited 2014 May 1]. Available from: http://www.tumorregister-muenchen.de/en/facts/surv/surv_hGNETE.pdf

Copyright

The content of the public web site provided by the Munich Cancer Registry is available worldwide and free of charge. All documents are free to download, utilize, copy, print-out and distribute, providing that the MCR is referenced.

Disclaimer

The Munich Cancer Registry reserves the right to not be responsible for the topicality, correctness, completeness or quality of the information provided. Liability claims regarding damage caused by the use of any information provided, including any kind of information which is incomplete or incorrect, will therefore be rejected.

Index of figures and tables

Fig./Tbl.		Page
1a	Relative survival by period of diagnosis (chart)	2
1b	Survival by period of diagnosis (table)	2
2a	Survival by gender (chart)	3
2b	Survival by gender (table)	3
3a	Relative survival by age category (chart)	4
3b	Survival by age category (table)	4
4a	Relative survival by extent of disease (chart)	5
4b	Survival by extent of disease (table)	5
5a	Observed post-progression survival (chart)	6
5b	Observed post-progression survival (table)	6