

Munich Cancer Registry



- ▶ [Baseline statistics](#)
- ▶ [Selection Matrix](#)
- ▶ [Homepage](#)
- ▶ [Deutsch](#)

Munich Cancer Registry at Munich Cancer Center
Marchioninstr. 15
Munich, 81377
Germany

<http://www.tumorregister-muenchen.de/en>

Cancer statistics: Survival

C16: Stomach cancer

Year of diagnosis	1988-2013
Patients	14,181
Diseases	14,199
Cases evaluated	7,916
Creation date	05/13/2015
Export date	12/30/2014
Population	4.64 m



http://www.tumorregister-muenchen.de/en/facts/surv/surv_C16__E.pdf

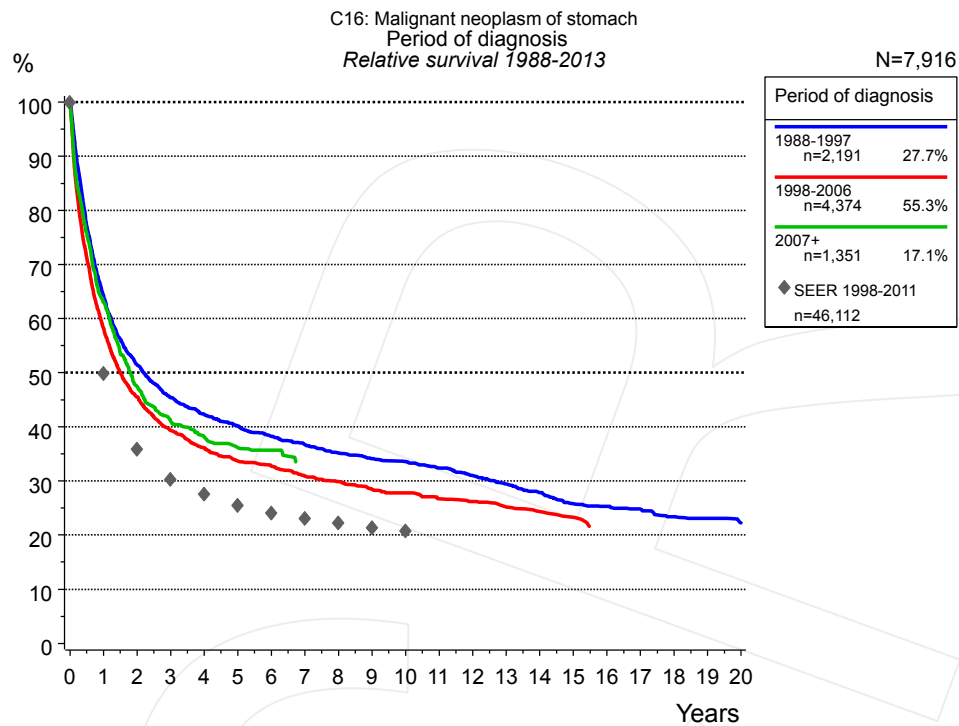


Figure 1a. Relative survival of patients with stomach cancer by period of diagnosis. Included in the evaluation are 7,916 cases diagnosed between 1988 and 2013.

The survival results of the SEER program (Surveillance, Epidemiology, and End Results) of the American National Cancer Institute (NCI) are summarized as the period of diagnosis from 1998 to 2011, and are represented by gray diamonds in order to facilitate comparisons between MCR and SEER.

The presented survival curves are derived from clinical records with valid follow-up informations, which means that death certificate cases (DCO) cases are omitted from the analysis. With this one restriction, the MCR has provided population-based statistics since 1988, collecting data on all cancer cases in the region of southern Bavaria. Historical data of previous time periods can be heavily selected, therefore, univariate survival comparisons of the presented time periods must be carefully considered. Nonetheless, all calculable survival curves are depicted to facilitate the comparison of long time follow-up analyses of relative survival between particular cancers.

Years	Period of diagnosis					
	1988-1997		1998-2006		2007+	
	n=2,191		n=4,374		n=1,351	
	obs. %	rel. %	obs. %	rel. %	obs. %	rel. %
0	100.0	100.0	100.0	100.0	100.0	100.0
1	61.6	64.0	55.5	58.1	60.4	63.0
2	47.7	51.4	41.9	45.5	44.3	47.5
3	40.8	45.4	34.9	39.3	37.1	41.0
4	36.8	42.3	31.0	36.1	33.5	38.1
5	33.7	40.1	27.9	33.6	30.7	36.2
6	31.1	38.2	26.2	32.7	29.6	35.7
7	28.9	36.7	23.8	30.8	26.9	32.9
8	26.8	35.1	22.3	29.9		
9	25.2	34.1	20.5	28.4		
10	24.0	33.6	19.5	27.8		
11	22.4	32.4	18.0	26.7		
12	20.8	31.0	17.1	26.2		
13	19.1	29.4	15.9	25.2		
14	17.4	27.8	14.9	24.3		
15	15.7	25.8	14.0	23.3		
16	14.9	25.3				
17	14.1	24.8				
18	12.9	23.4				
19	12.5	23.0				
20	11.4	22.3				

Table 1b. Observed (obs.) and relative (rel.) survival of patients with stomach cancer by period of diagnosis for period 1988-2013 (N=7,916).

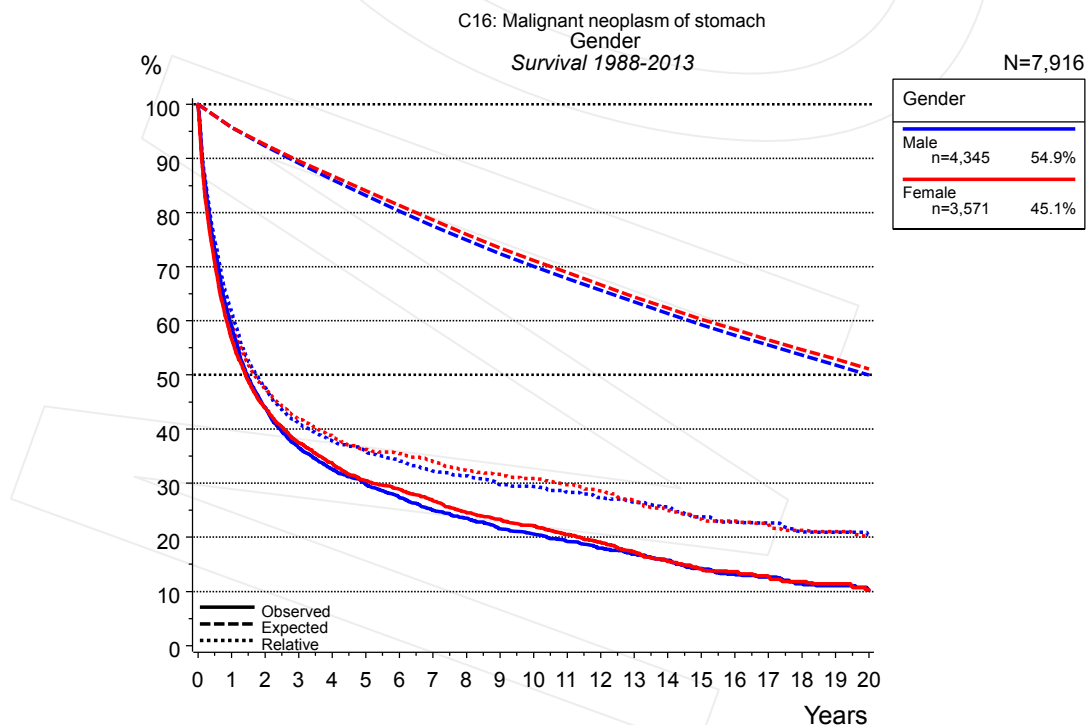


Figure 2a. Survival of patients with stomach cancer by gender. Included in the evaluation are 7,916 cases diagnosed between 1988 and 2013.

Years	Gender			
	Male n=4,345		Female n=3,571	
	obs. %	rel. %	obs. %	rel. %
0	100.0	100.0	100.0	100.0
1	59.0	61.7	56.6	59.2
2	44.1	47.7	43.9	47.4
3	36.6	41.0	37.5	41.8
4	32.5	37.8	33.8	38.8
5	29.7	35.8	30.5	36.2
6	27.4	34.1	28.9	35.5
7	25.0	32.2	26.7	34.0
8	23.5	31.3	24.6	32.4
9	21.5	29.7	23.4	31.6
10	20.6	29.4	22.2	30.9
11	19.2	28.3	20.5	29.7
12	18.0	27.4	19.1	28.6
13	16.9	26.5	17.3	26.8
14	15.8	25.6	15.6	24.9
15	14.2	23.8	14.2	23.4
16	13.2	22.8	13.7	23.0
17	12.7	22.6	12.8	22.5
18	11.5	21.1	11.9	21.3
19	11.1	21.0	11.4	21.1
20	10.2	20.4	10.4	20.1

Table 2b. Observed (obs.) and relative (rel.) survival of patients with stomach cancer by gender for period 1988-2013 (N=7,916).

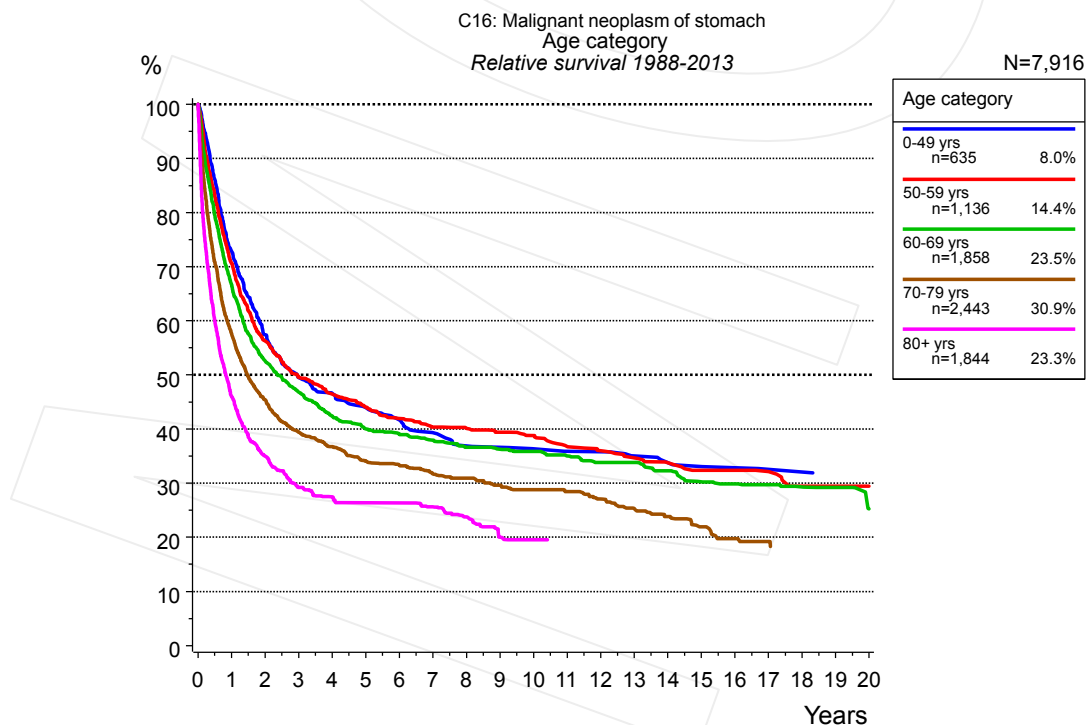


Figure 3a. Relative survival of patients with stomach cancer by age category. Included in the evaluation are 7,916 cases diagnosed between 1988 and 2013.

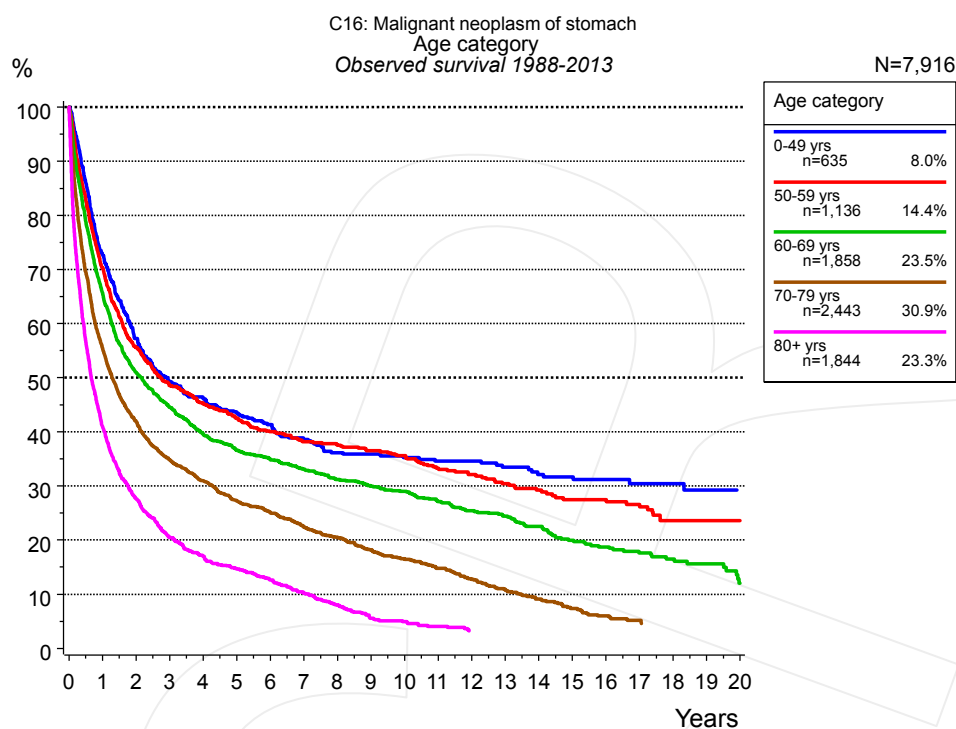


Figure 3b. Observed survival of patients with stomach cancer by age category. Included in the evaluation are 7,916 cases diagnosed between 1988 and 2013.

Years	Age category									
	0-49 yrs		50-59 yrs		60-69 yrs		70-79 yrs		80+ yrs	
	n=635		n=1,136		n=1,858		n=2,443		n=1,844	
	obs. %	rel. %	obs. %	rel. %	obs. %	rel. %	obs. %	rel. %	obs. %	rel. %
0	100.0	100.0	100.0	100.0	100.0	100.0	100.0	100.0	100.0	100.0
1	72.7	72.8	70.3	70.7	65.5	66.5	55.4	57.6	40.9	46.1
2	57.3	57.4	55.6	56.3	51.0	52.6	41.9	45.4	27.7	35.0
3	49.2	49.5	48.6	49.6	44.6	46.8	34.8	39.5	20.5	29.3
4	46.2	46.6	45.1	46.5	39.6	42.3	31.0	36.7	17.0	27.5
5	43.4	44.0	42.5	44.1	36.6	40.0	27.2	34.1	14.6	26.4
6	41.3	41.7	40.0	42.0	34.9	39.0	25.1	33.3	12.6	26.4
7	38.6	39.3	38.2	40.4	33.1	37.9	22.4	31.7	10.1	25.6
8	36.1	36.8	37.5	40.2	31.2	36.7	20.5	30.9	8.0	23.8
9	35.9	36.6	36.5	39.5	29.9	36.3	18.2	29.7	5.6	20.0
10	35.2	36.3	35.6	38.8	29.0	35.9	16.5	28.8	5.0	19.5
11	34.6	35.8	33.3	36.8	27.1	35.0	14.8	28.5		
12	34.6	35.8	32.1	36.1	25.4	33.8	12.7	27.1		
13	33.5	35.0	30.4	34.7	24.4	33.8	10.8	25.4		
14	32.1	33.8	29.2	33.8	22.6	32.3	9.1	23.8		
15	31.7	33.1	27.5	32.4	20.0	30.3	7.4	21.9		
16	31.2	32.9	27.5	32.4	18.7	29.9	6.0	19.8		
17	30.4	32.6	26.6	32.2	17.6	29.7	5.2	19.3		
18	30.4	32.0	23.6	29.5	16.5	29.3				
19	29.3	31.3	23.6	29.5	15.6	29.2				
20	29.3	30.5	23.6	29.5	12.0	25.2				

Table 3c. Observed (obs.) and relative (rel.) survival of patients with stomach cancer by age category for period 1988-2013 (N=7,916).

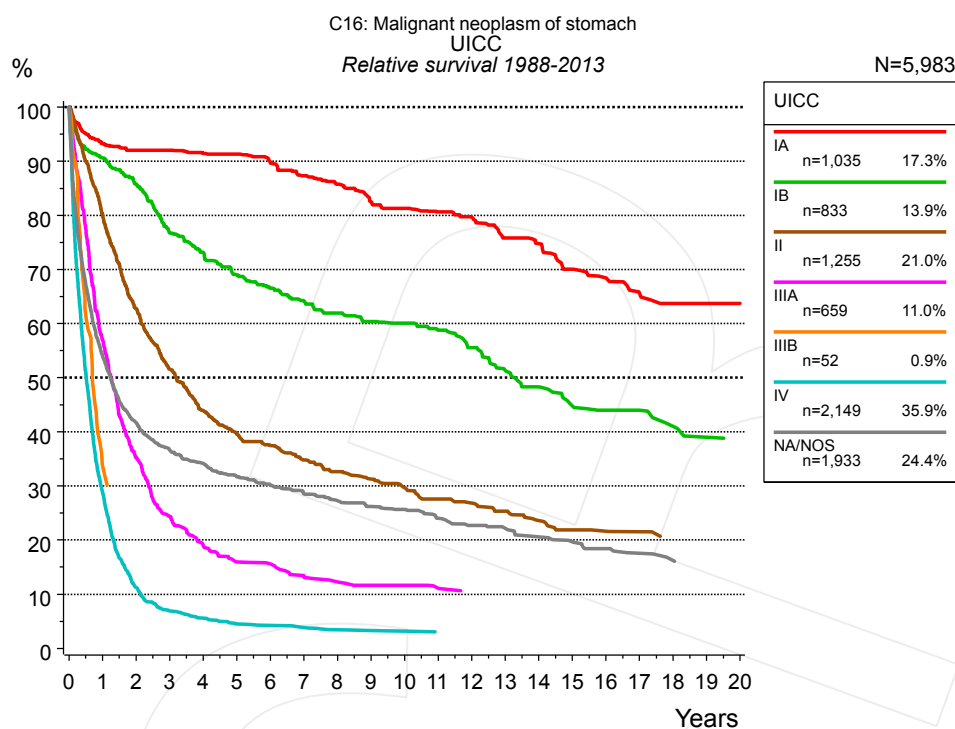


Figure 4a. Relative survival of patients with stomach cancer by UICC. For 6,490 of 7,916 cases diagnosed between 1988 and 2013 valid data could be obtained for this item. For a total of 5,983 cases an evaluable classification was established. The grey line represents the subgroup of 1,933 patients with missing values regarding UICC (24.4% of 7,916 patients, the percent values of all other categories are related to n=5,983).

Years	UICC													
	IA n=1,035		IB n=833		II n=1,255		IIIA n=659		IIIB n=52		IV n=2,149		NA/NOS n=1,933	
	obs. %	rel. %	obs. %	rel. %	obs. %	rel. %	obs. %	rel. %	obs. %	rel. %	obs. %	rel. %	obs. %	rel. %
0	100.0	100.0	100.0	100.0	100.0	100.0	100.0	100.0	100.0	100.0	100.0	100.0	100.0	100.0
1	90.2	93.3	87.1	90.6	77.2	80.0	54.6	56.9	32.7	33.8	27.8	28.8	50.6	53.9
2	86.5	92.0	79.4	85.7	58.6	62.8	32.4	35.2			10.6	11.2	37.6	41.7
3	83.3	92.0	68.4	76.8	46.7	51.6	21.7	24.3			6.4	6.9	31.8	36.6
4	80.2	91.5	62.6	73.2	38.6	44.0	16.3	18.9			5.1	5.6	28.7	34.2
5	77.8	91.3	56.6	69.0	33.6	39.6	13.2	15.9			4.0	4.5	25.8	31.7
6	73.8	89.7	52.3	66.5	30.8	37.5	12.6	15.6			3.8	4.3	23.8	30.1
7	69.4	87.3	48.5	64.2	27.6	34.8	10.3	13.2			3.3	3.8	22.0	28.6
8	65.8	85.8	45.2	62.0	25.1	32.6	9.1	12.3			2.9	3.4	20.4	27.3
9	61.4	82.5	42.1	60.4	23.1	31.3	8.4	11.6			2.8	3.3	19.1	26.2
10	59.3	81.3	40.3	60.0	21.2	29.7	8.4	11.6			2.7	3.2	18.3	25.6
11	56.5	80.6	37.6	58.8	19.1	27.6	7.7	11.1			2.4	3.0	16.6	24.0
12	54.2	79.7	34.2	55.6	18.0	26.8							15.2	22.7
13	50.0	75.8	30.4	51.4	16.5	25.4							14.4	22.2
14	48.0	74.8	27.4	48.3	14.9	23.6							13.0	20.6
15	43.7	70.1	24.3	44.8	13.5	21.9							12.2	19.6
16	41.5	68.4	22.9	44.0	13.1	21.7							11.1	18.4
17	38.3	65.7	22.9	44.0	12.7	21.6							10.2	17.5
18	36.4	63.7	20.1	41.0	11.7	20.5							9.3	16.2
19	35.6	63.7	18.5	39.0	11.7	20.1							8.8	15.8
20	35.6	63.7												

Table 4b. Observed (obs.) and relative (rel.) survival of patients with stomach cancer by UICC for period 1988-2013 (N=5,983).

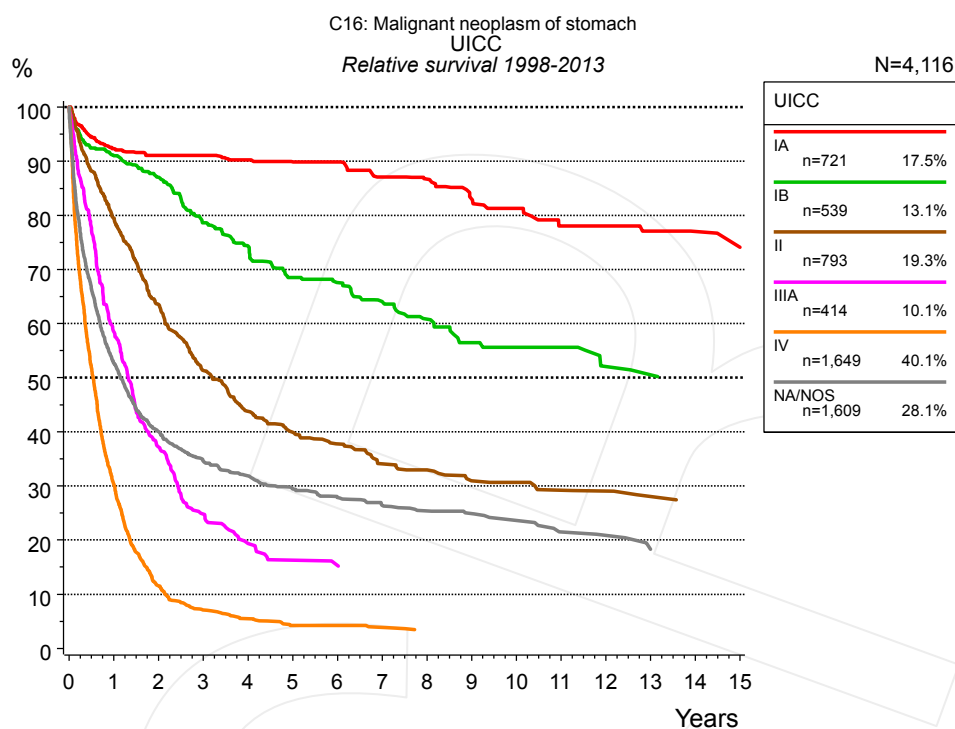


Figure 4c. Relative survival of patients with stomach cancer by UICC. For 4,553 of 5,725 cases diagnosed between 1998 and 2013 valid data could be obtained for this item. For a total of 4,116 cases an evaluable classification was established. The grey line represents the subgroup of 1,609 patients with missing values regarding UICC (28.1% of 5,725 patients, the percent values of all other categories are related to n=4,116).

Years	UICC											
	IA n=721		IB n=539		II n=793		IIIA n=414		IV n=1,649		NA/NOS n=1,609	
	obs. %	rel. %	obs. %	rel. %	obs. %	rel. %	obs. %	rel. %	obs. %	rel. %	obs. %	rel. %
0	100.0	100.0	100.0	100.0	100.0	100.0	100.0	100.0	100.0	100.0	100.0	100.0
1	89.1	92.3	87.3	91.0	76.9	79.5	56.0	58.5	29.3	30.3	49.3	52.7
2	85.4	91.1	80.4	87.0	59.5	63.5	34.3	37.2	10.9	11.6	36.1	40.1
3	82.2	91.1	69.6	78.6	46.7	51.3	22.2	24.8	6.6	7.1	30.0	34.6
4	78.8	90.3	63.0	74.3	38.6	43.8	16.9	19.4	5.1	5.5	26.8	31.9
5	75.6	89.9	55.7	68.5	34.0	39.9	13.7	16.3	3.8	4.2	24.0	29.4
6	73.0	89.9	52.2	67.6	31.2	37.8	13.0	15.3	3.8	4.2	22.1	27.9
7	68.0	87.1	47.0	64.0	27.3	34.0			3.5	3.9	20.5	26.4
8	65.2	86.7	42.7	60.8	25.7	32.9			2.9	3.4	19.3	25.4
9	60.4	83.0	37.9	56.5	23.0	30.9			2.9	3.3	18.5	24.9
10	57.4	81.3	36.4	55.6	22.5	30.7			2.9	3.1	17.2	23.6
11	52.9	78.0	34.4	55.6	20.8	29.1			2.9	3.0	15.0	21.5
12	52.0	78.0	30.1	52.1	20.2	29.0					14.3	20.9
13	49.1	77.1	28.7	50.5	18.8	28.0					12.1	18.3
14	47.6	77.0	27.2	50.2								
15	45.8	74.1										

Table 4d. Observed (obs.) and relative (rel.) survival of patients with stomach cancer by UICC for period 1998-2013 (N=4,116).

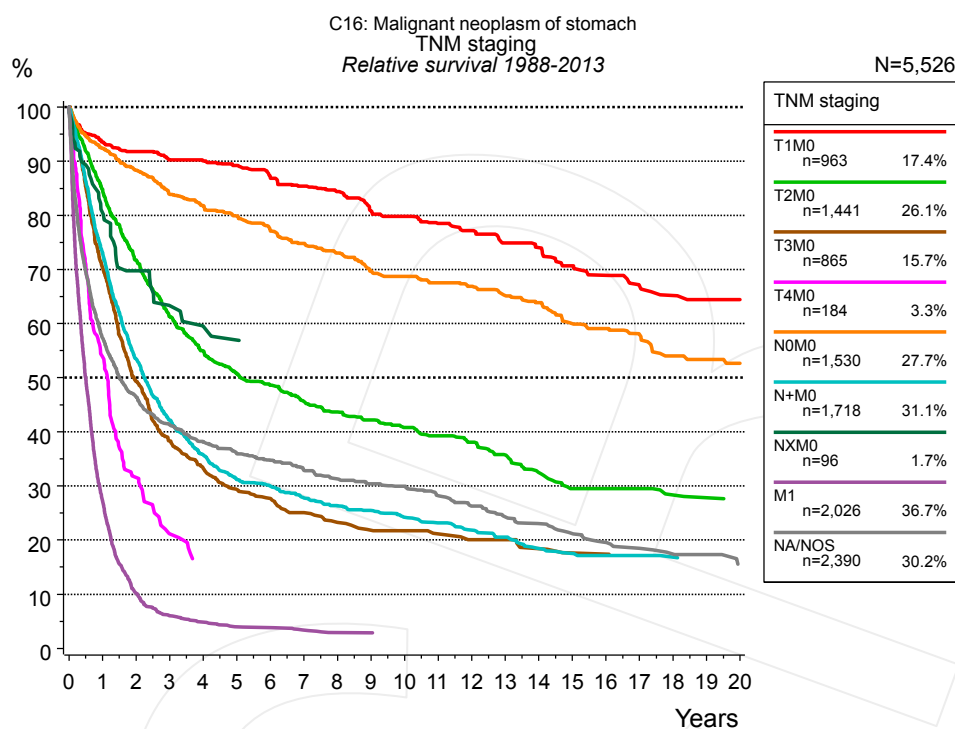


Figure 4e. Relative survival of patients with stomach cancer by TNM staging. For 6,490 of 7,916 cases diagnosed between 1988 and 2013 valid data could be obtained for this item. For a total of 5,526 cases an evaluable classification was established. The accumulated percentage exceeds the 100% value because patients are potentially considered in more than one subgroup. The grey line represents the subgroup of 2,390 patients with missing values regarding TNM staging (30.2% of 7,916 patients, the percent values of all other categories are related to n=5,526).

TNM staging															
Years	T1M0 n=963		T2M0 n=1,441		T3M0 n=865		T4M0 n=184		N0M0 n=1,530		N+M0 n=1,718		NXM0 n=96		
	obs. %	rel. %	obs. %	rel. %	obs. %	rel. %	obs. %	rel. %	obs. %	rel. %	obs. %	rel. %	obs. %	rel. %	
0	100.0	100.0	100.0	100.0	100.0	100.0	100.0	100.0	100.0	100.0	100.0	100.0	100.0	100.0	
1	90.6	93.6	81.6	84.5	67.8	70.3	52.0	53.9	89.3	92.4	70.5	73.0	77.8	80.5	
2	86.4	91.8	66.9	71.8	46.2	49.3	29.9	31.6	82.7	88.3	50.1	53.5	65.0	69.8	
3	82.1	90.3	55.2	61.3	34.9	38.3	19.2	21.2	75.9	83.9	38.3	42.2	56.0	63.3	
4	79.5	90.0	47.9	55.0	29.5	33.2	14.7	15.9	71.6	81.8	31.6	35.7	50.4	59.5	
5	76.3	89.2	42.5	50.7	25.3	29.3			67.5	79.9	26.7	31.2	48.3	56.9	
6	72.1	86.9	39.4	48.6	23.4	27.7			63.2	77.1	25.0	30.0	45.8	56.9	
7	68.5	85.4	35.5	45.6	20.8	25.1			59.1	74.8	22.4	27.8	45.8	56.9	
8	65.4	84.4	32.9	43.7	18.5	23.3			55.8	73.0	20.6	26.3	45.8	56.9	
9	60.7	80.8	30.6	42.2	17.1	21.8			51.4	69.7	19.2	25.5	45.8	56.9	
10	59.0	79.8	28.4	40.8	16.8	21.7			49.7	68.7	17.7	24.2	45.8	56.9	
11	55.6	78.5	26.4	39.3	15.6	21.1			46.7	67.5	16.4	23.2	45.8	56.9	
12	53.5	77.2	24.6	38.1	14.2	20.1			44.8	66.9	15.0	21.8			
13	50.0	74.9	22.3	35.7	14.2	20.1			42.2	65.2	13.7	20.5			
14	48.0	74.0	19.4	32.5	12.6	18.4			40.0	63.9	11.8	18.5			
15	44.6	70.7	17.0	29.5	11.4	17.6			36.3	60.0	11.0	17.5			
16	42.0	68.9	16.7	29.5	11.4	17.4			34.7	59.0	10.5	17.1			
17	39.3	67.1	16.7	29.5	10.7	16.6			32.7	58.0	10.5	17.1			
18	37.5	65.2	15.0	28.4					29.7	54.0	9.8	16.8			
19	36.0	64.4	14.5	27.8					28.7	53.4	9.3	16.6			
20	34.8	64.4	13.6	27.1					27.3	52.7					

cont'd Years	TNM staging			
	M1 n=2,026		NA/NOS n=2,390	
	obs. %	rel. %	obs. %	rel. %
0	100.0	100.0	100.0	100.0
1	26.2	27.2	53.8	57.3
2	9.6	10.2	41.7	46.5
3	5.6	6.0	35.6	41.3
4	4.4	4.9	31.6	38.1
5	3.6	4.0	28.7	36.0
6	3.4	3.8	26.7	34.8
7	2.9	3.4	24.3	32.9
8	2.5	2.9	22.4	31.3
9	2.5	2.9	21.0	30.4
10	2.4	2.7	20.0	29.9
11			18.2	28.2
12			16.4	26.3
13			14.6	24.3
14			13.5	23.0
15			12.1	21.2
16			10.9	19.6
17			10.0	18.5
18			9.1	17.4
19			8.8	17.3
20			7.3	15.3

Table 4f. Observed (obs.) and relative (rel.) survival of patients with stomach cancer by TNM staging for period 1988-2013 (N=8,823).

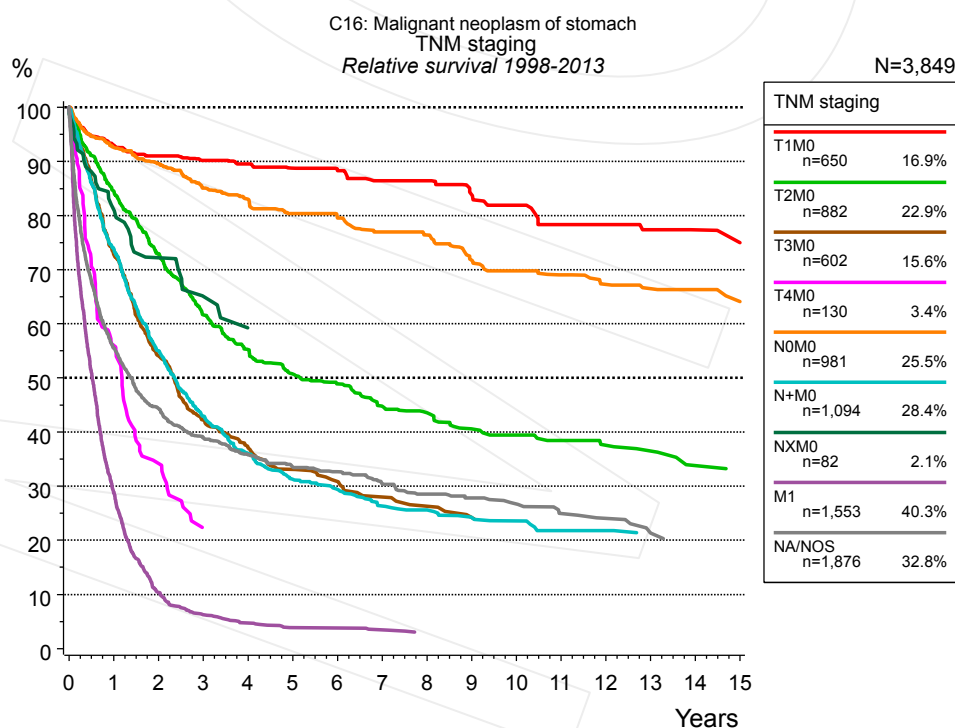


Figure 4g. Relative survival of patients with stomach cancer by TNM staging. For 4,553 of 5,725 cases diagnosed between 1998 and 2013 valid data could be obtained for this item. For a total of 3,849 cases an evaluable classification was established. The accumulated percentage exceeds the 100% value because patients are potentially considered in more than one subgroup. The grey line represents the subgroup of 1,876 patients with missing values regarding TNM staging (32.8% of 5,725 patients, the percent values of all other categories are related to n=3,849).

Years	TNM staging													
	T1M0 n=650		T2M0 n=882		T3M0 n=602		T4M0 n=130		N0M0 n=981		N+M0 n=1,094		NXM0 n=82	
	obs. %	rel. %	obs. %	rel. %	obs. %	rel. %	obs. %	rel. %	obs. %	rel. %	obs. %	rel. %	obs. %	rel. %
0	100.0	100.0	100.0	100.0	100.0	100.0	100.0	100.0	100.0	100.0	100.0	100.0	100.0	100.0
1	90.0	93.0	81.5	84.6	70.5	72.8	54.5	56.0	89.4	92.6	71.4	73.8	79.0	81.2
2	85.4	91.0	68.0	73.0	51.0	54.1	32.7	34.2	83.7	89.6	51.7	55.0	67.8	72.2
3	81.7	90.2	55.5	61.7	38.9	42.2	20.4	22.3	76.7	85.1	39.2	42.9	58.5	65.1
4	78.7	89.6	48.0	55.3	33.5	37.1			72.4	83.0	32.1	36.0	51.2	59.2
5	75.0	88.8	42.4	50.7	29.3	33.1			67.5	80.4	27.0	31.3	51.2	57.7
6	72.1	88.4	39.4	48.9	26.8	30.9			64.6	79.6	24.7	29.4		
7	68.2	86.5	34.6	44.8	23.9	28.0			60.1	77.0	21.6	26.4		
8	66.0	86.5	32.7	43.6	22.0	26.3			57.4	76.4	20.5	25.7		
9	61.3	83.9	29.0	40.6	19.9	24.2			52.0	71.8	18.6	24.3		
10	58.7	81.9	27.8	39.5	19.2	23.8			49.6	69.8	17.9	23.6		
11	53.1	78.3	25.8	38.5	19.2	23.6			46.3	69.1	16.0	21.9		
12	52.2	78.3	24.2	37.5					43.6	67.3	16.0	21.9		
13	49.0	77.4	23.0	36.5					41.7	66.5	14.6	21.1		
14	47.5	77.4	20.4	33.8					40.1	66.3				
15	45.6	75.0	19.2	32.4					37.9	64.1				

cont'd Years	TNM staging			
	M1 n=1,553		NA/NOS n=1,876	
	obs. %	rel. %	obs. %	rel. %
0	100.0	100.0	100.0	100.0
1	27.9	28.9	52.0	55.5
2	9.8	10.4	39.7	44.3
3	5.8	6.3	33.4	38.9
4	4.4	4.7	29.5	35.8
5	3.5	3.8	26.7	33.6
6	3.5	3.8	25.0	32.7
7	3.1	3.5	22.4	30.5
8	2.6	3.0	20.3	28.6
9	2.6	2.8	19.1	27.8
10	2.6	2.7	17.9	26.7
11	2.6	2.6	16.0	25.0
12			15.1	24.1
13			12.8	21.3
14			12.1	19.3

Table 4h. Observed (obs.) and relative (rel.) survival of patients with stomach cancer by TNM staging for period 1998-2013 (N=5,974).

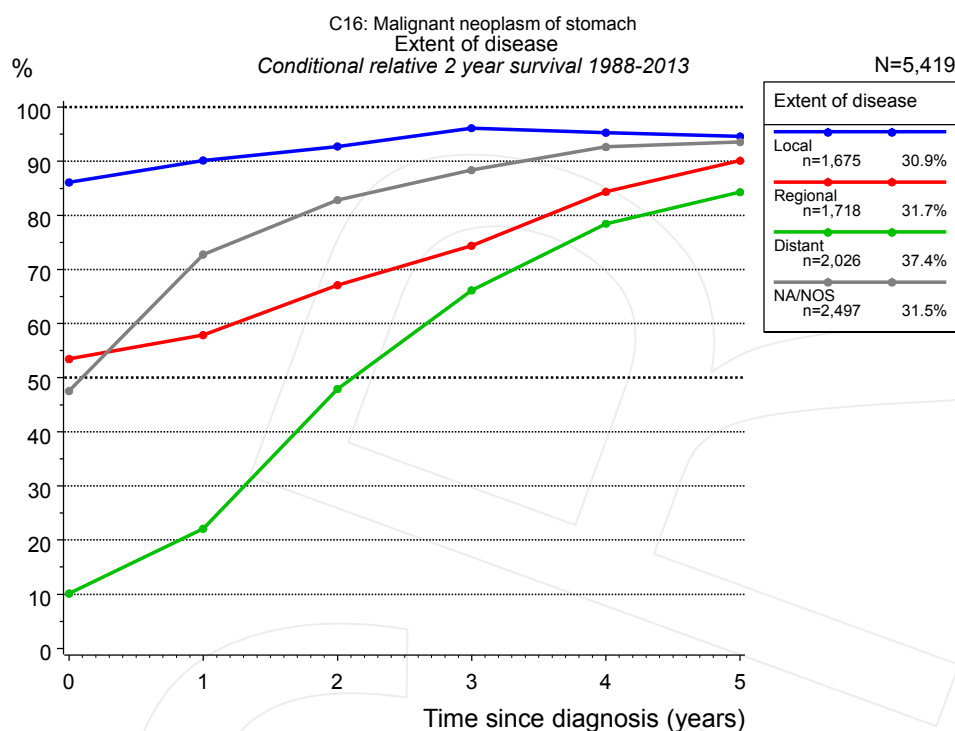


Figure 4i. Conditional relative 2-year survival of patients with stomach cancer by extent of disease. For 6,490 of 7,916 cases diagnosed between 1988 and 2013 valid data could be obtained for this item. For a total of 5,419 cases an evaluable classification was established. The grey line represents the subgroup of 2,497 patients with missing values regarding extent of disease (31.5% of 7,916 patients, the percent values of all other categories are related to n=5,419).

Years	Extent of disease							
	Local		Regional		Distant		NA/NOS	
	n	Cond. surv. % 2 yrs	n	Cond. surv. % 2 yrs	n	Cond. surv. % 2 yrs	n	Cond. surv. % 2 yrs
0	1,675	86.1	1,718	53.5	2,026	10.2	2,497	47.5
1	1,395	90.2	1,157	57.9	497	22.1	1,287	72.8
2	1,187	92.7	770	67.1	165	47.9	919	82.8
3	1,010	96.1	543	74.4	83	66.2	729	88.4
4	869	95.3	408	84.4	60	78.5	566	92.6
5	750	94.6	320	90.1	43	84.3	466	93.5

Table 4j. Conditional relative 2-year survival of patients with stomach cancer by extent of disease for period 1988-2013 (N=5,419).

Conditional relative survival rates refer to the relative survival probability, in this case for 2 years after cancer diagnosis, compared to the age- and sex-matched population (=100%) under the condition of being alive for a certain time period (x-axis in Figure 4g). The results illustrate to what extent the cancer induced mortality of particular subgroups declines in the subsequent years after detection of the malignancy. For instance, according to the presented survival statistics, patients in the subgroup extent of disease="Local", who are alive at least 3 years after cancer diagnosis, the conditional relative 2-year survival rate is 96.1% (n=1,010).

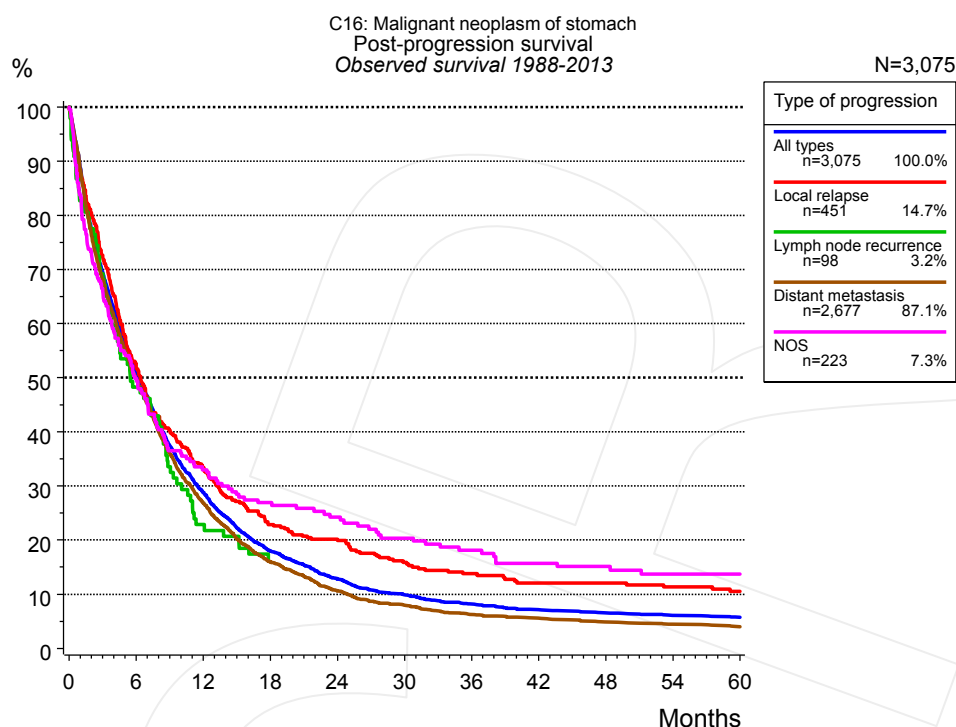


Figure 5a. Observed post-progression survival of 3,075 patients with stomach cancer diagnosed between 1988 and 2013 (incl. M1). These 3,075 patients with documented progression events during their course of disease represent 38.8% of the totally 7,916 evaluated cases. Patients with cancer relapse documented via death certificates only were excluded (n=1,422, 18.0%). Multiple progression types on different sites are included in the evaluation even when not occurring synchronously. The NOS (not otherwise specified) class is included under the condition, that it is the one and only progression type during the course of disease.

Medical record documentation often lacks the linguistic severity to distinguish between local relapse, regional lymph node metastasis and distant spread in solid cancers. Frequently, the statement “not specified” is the only information in registries regarding relapse of the disease. The category “All types” denotes all cases who suffered from at least one relapse during the course of disease (incl. primary M1-status). Although, the real number of relapsed patients is likely to be much higher. The accumulated percentage of patients with local relapse or distant metastasis exceeds the 100% value because patients are potentially considered in more than one subgroup.

Months	Type of progression				
	All types n=3,075	Local relapse n=451	Lymph node recurrence n=98	Distant metastasis n=2,677	NOS n=223
	%	%	%	%	%
0	100.0	100.0	100.0	100.0	100.0
12	28.8	33.4	22.9	26.8	33.0
24	12.8	20.2		10.6	24.2
36	8.1	13.8		6.2	18.2
48	6.5	12.1		4.8	15.1
60	5.7	10.5		4.0	13.8

Table 5b. Observed post-progression survival of patients with stomach cancer for period 1988-2013 (N=3,075).

Shortcuts

MCR	Munich Cancer Registry, Germany (Tumorregister München)
NCI	National Cancer Institute, USA
SEER	Surveillance, Epidemiology, and End Results, USA
UICC	Union for International Cancer Control, Geneva
DCO	Death certificate only. The death certificate provides the only notification to the registry.
NA	Not available
NOS	Not otherwise specified
OS	Observed/overall survival (Kaplan-Meier estimate)
RS	Relative survival, compared to the general population, ratio of observed to expected survival (Ederer II method), reflecting excess mortality among cancer patients
AS	Assembled survival chart (observed, expected, relative)
PPS	Post-progression survival, survival since first relapse (Kaplan-Meier estimate)
progression	Date of entry: Date of first locoregional recurrence, distant metastasis, unspecified
	Event: Death of all causes
CS	Conditional survival, survival probability under the condition of surviving a given period of time

Recommended Citation

Munich Cancer Registry. Survival C16: Stomach cancer [Internet]. 2015 [updated 2015 May 13; cited 2015 Jul 1]. Available from: http://www.tumorregister-muenchen.de/en/facts/surv/surv_C16__E.pdf

Copyright

The content of the public web site provided by the Munich Cancer Registry is available worldwide and free of charge. All documents are free to download, utilize, copy, print-out and distribute, providing that the MCR is referenced.

Disclaimer

The Munich Cancer Registry reserves the right to not be responsible for the topicality, correctness, completeness or quality of the information provided. Liability claims regarding damage caused by the use of any information provided, including any kind of information which is incomplete or incorrect, will therefore be rejected.

Index of figures and tables

Fig./Tbl.	Page
1a Relative survival by period of diagnosis (chart)	2
1b Survival by period of diagnosis (table)	3
2a Survival by gender (chart)	3
2b Survival by gender (table)	4
3a Relative survival by age category (chart)	4
3b Observed survival by age category (chart)	5
3c Survival by age category (table)	5
4a Relative survival by UICC 1988+ (chart)	6
4b Survival by UICC 1988+ (table)	6
4c Relative survival by UICC 1998+ (chart)	7
4d Survival by UICC 1998+ (table)	7
4e Relative survival by TNM staging 1988+ (chart)	8
4f Survival by TNM staging 1988+ (table)	8
4g Relative survival by TNM staging 1998+ (chart)	9
4h Survival by TNM staging 1998+ (table)	10
4i Conditional survival by extent of disease (chart)	11
4j Conditional survival by extent of disease (table)	11
5a Observed post-progression survival (chart)	12
5b Observed post-progression survival (table)	12