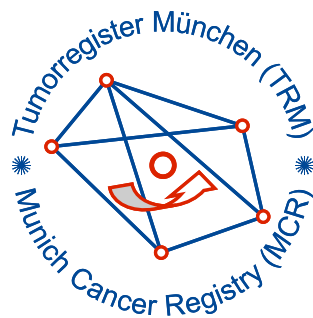


Munich Cancer Registry



- ▶ Baseline statistics
- ▶ Selection Matrix
- ▶ Homepage
- ▶ *Deutsch*

Munich Cancer Registry at Munich Cancer Center
Marchioninstr. 15
Munich, 81377
Germany

<http://www.tumorregister-muenchen.de/en>

Cancer statistics: Survival

C18: Colon cancer

Year of diagnosis	1988-2013
Patients	34,110
Diseases	34,785
Cases evaluated	19,089
Creation date	05/13/2015
Export date	12/30/2014
Population	4.64 m



http://www.tumorregister-muenchen.de/en/facts/surv/surv_C18__E.pdf

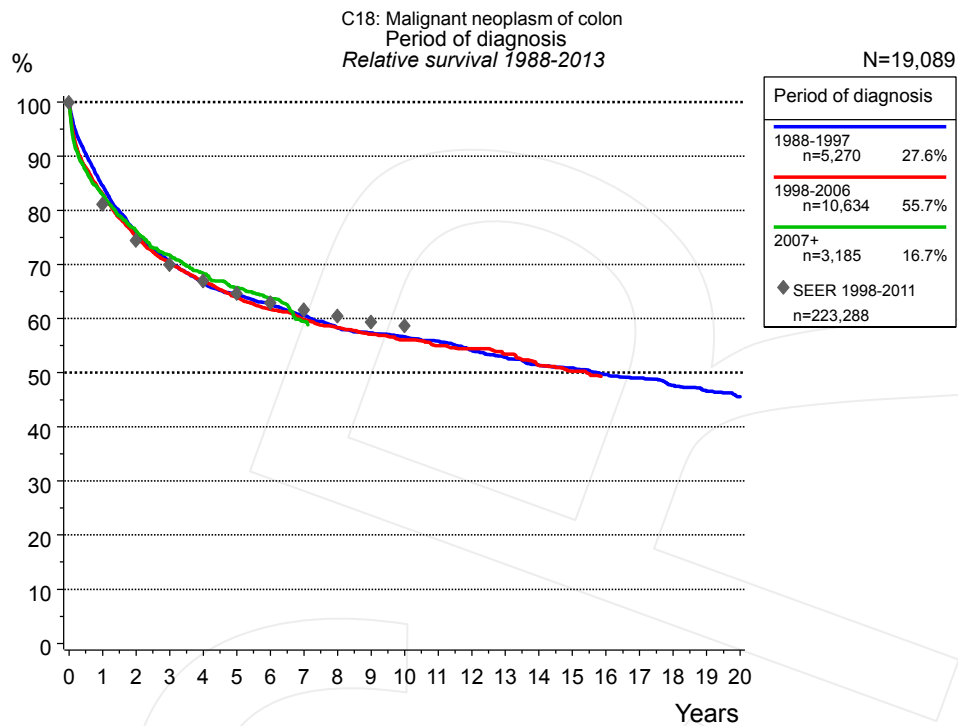


Figure 1a. Relative survival of patients with colon cancer by period of diagnosis. Included in the evaluation are 19,089 cases diagnosed between 1988 and 2013.

The survival results of the SEER program (Surveillance, Epidemiology, and End Results) of the American National Cancer Institute (NCI) are summarized as the period of diagnosis from 1998 to 2011, and are represented by gray diamonds in order to facilitate comparisons between MCR and SEER.

The presented survival curves are derived from clinical records with valid follow-up informations, which means that death certificate cases (DCO) cases are omitted from the analysis. With this one restriction, the MCR has provided population-based statistics since 1988, collecting data on all cancer cases in the region of southern Bavaria. Historical data of previous time periods can be heavily selected, therefore, univariate survival comparisons of the presented time periods must be carefully considered. Nonetheless, all calculable survival curves are depicted to facilitate the comparison of long time follow-up analyses of relative survival between particular cancers.

Years	Period of diagnosis					
	1988-1997 n=5,270		1998-2006 n=10,634		2007+ n=3,185	
	obs. %	rel. %	obs. %	rel. %	obs. %	rel. %
0	100.0	100.0	100.0	100.0	100.0	100.0
1	81.2	84.5	79.7	83.1	79.6	82.9
2	70.2	75.8	69.6	75.2	70.6	76.2
3	62.9	70.5	62.6	70.2	64.1	71.7
4	57.2	66.5	57.6	67.0	58.9	68.4
5	53.4	64.5	53.0	64.1	54.5	65.7
6	49.8	62.6	49.2	61.7	51.0	63.8
7	46.4	60.5	45.9	59.8	45.9	59.4
8	43.0	58.3	43.1	58.3		
9	40.8	57.4	40.6	57.1		
10	38.7	56.6	38.4	56.1		
11	36.7	55.8	36.2	55.0		
12	34.3	54.2	34.4	54.4		
13	32.2	52.9	32.3	53.5		
14	30.1	51.4	29.8	51.4		
15	28.8	50.9	27.8	50.3		
16	27.0	49.6				
17	25.7	49.0				
18	23.9	47.7				
19	22.4	46.6				
20	21.0	45.6				

Table 1b. Observed (obs.) and relative (rel.) survival of patients with colon cancer by period of diagnosis for period 1988-2013 (N=19,089).

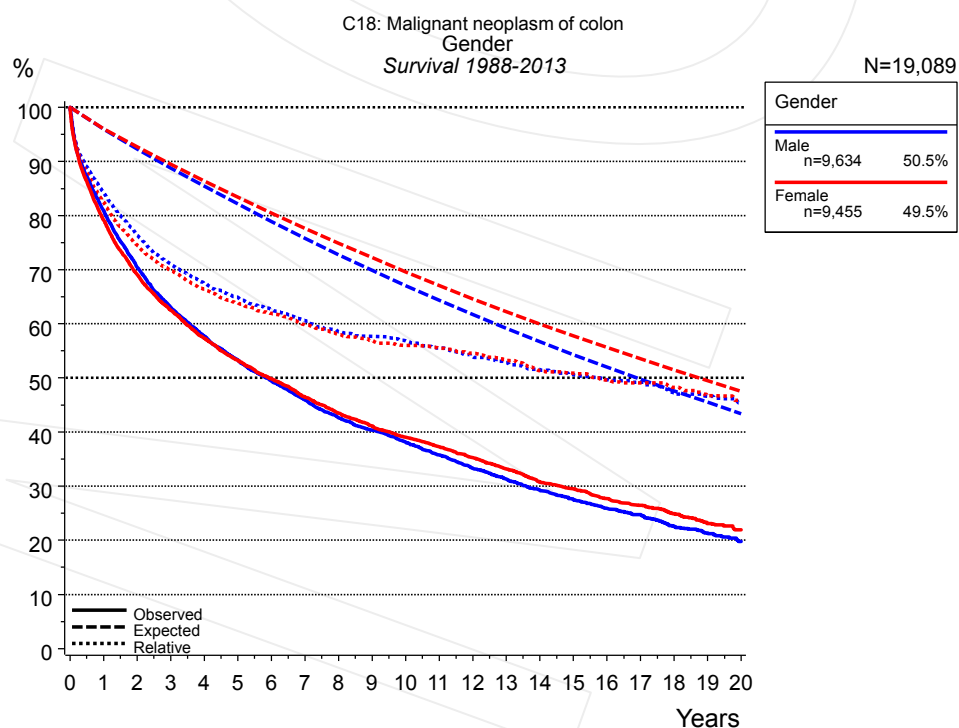


Figure 2a. Survival of patients with colon cancer by gender. Included in the evaluation are 19,089 cases diagnosed between 1988 and 2013.

Years	Gender			
	Male n=9,634		Female n=9,455	
	obs. %	rel. %	obs. %	rel. %
0	100.0	100.0	100.0	100.0
1	81.0	84.4	79.2	82.4
2	70.5	76.4	69.2	74.6
3	63.1	71.0	62.5	69.8
4	57.7	67.5	57.4	66.4
5	53.4	64.9	53.3	63.9
6	49.4	62.6	49.9	61.9
7	45.9	60.6	46.5	59.8
8	42.7	58.6	43.5	58.1
9	40.4	57.6	41.1	56.9
10	38.2	56.9	39.1	56.0
11	35.8	55.5	37.3	55.5
12	33.4	54.0	35.3	54.6
13	31.3	52.9	33.2	53.3
14	29.3	51.6	30.8	51.3
15	27.5	50.7	29.6	50.9
16	25.9	49.7	27.7	49.6
17	24.8	49.2	26.5	49.1
18	22.5	47.3	24.9	48.3
19	21.4	46.6	23.1	46.7
20	19.8	45.4	22.0	45.9

Table 2b. Observed (obs.) and relative (rel.) survival of patients with colon cancer by gender for period 1988-2013 (N=19,089).

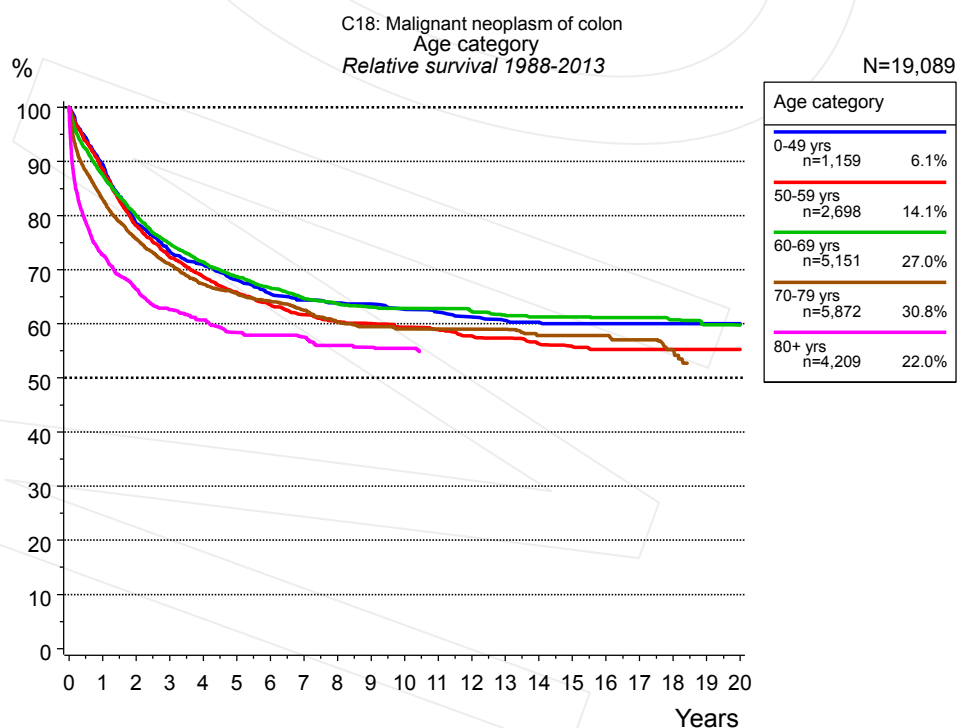


Figure 3a. Relative survival of patients with colon cancer by age category. Included in the evaluation are 19,089 cases diagnosed between 1988 and 2013.

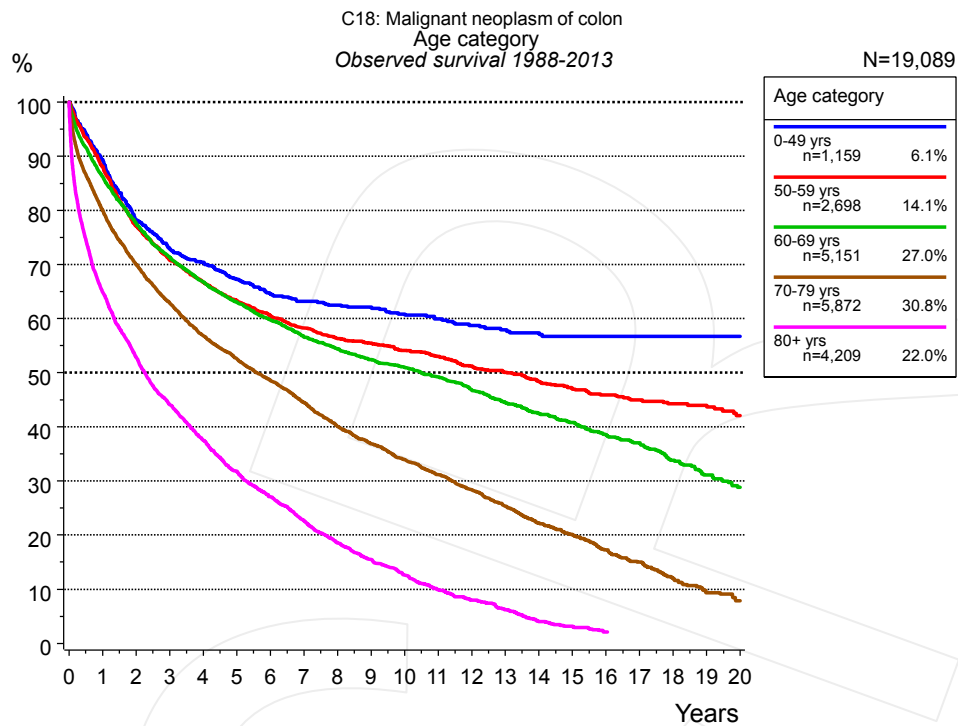


Figure 3b. Observed survival of patients with colon cancer by age category. Included in the evaluation are 19,089 cases diagnosed between 1988 and 2013.

Years	Age category									
	0-49 yrs n=1,159		50-59 yrs n=2,698		60-69 yrs n=5,151		70-79 yrs n=5,872		80+ yrs n=4,209	
	obs. %	rel. %	obs. %	rel. %	obs. %	rel. %	obs. %	rel. %	obs. %	rel. %
0	100.0	100.0	100.0	100.0	100.0	100.0	100.0	100.0	100.0	100.0
1	89.3	89.5	88.1	88.6	86.2	87.5	80.0	83.0	65.0	72.8
2	78.2	78.5	77.1	78.1	77.6	80.1	70.0	75.7	52.9	66.4
3	73.0	73.4	70.8	72.3	71.4	74.9	62.9	71.0	44.1	62.6
4	70.4	71.0	66.7	68.7	66.7	71.4	56.9	67.4	37.5	60.7
5	67.3	68.1	63.3	65.8	63.0	68.8	52.6	65.6	31.8	58.4
6	64.5	65.5	60.5	63.5	59.8	66.7	48.6	64.2	27.1	57.9
7	63.2	64.4	58.2	61.7	56.6	64.7	44.5	62.5	22.7	57.5
8	62.5	63.8	56.3	60.3	54.4	63.7	40.1	60.3	18.6	56.0
9	62.1	63.7	55.5	60.1	52.4	63.1	36.8	59.5	15.5	55.7
10	60.9	62.7	54.1	59.4	51.0	62.8	33.9	59.0	12.6	55.5
11	60.0	62.1	53.0	58.9	49.2	62.8	31.1	59.0		
12	58.7	61.3	51.2	57.8	46.9	62.4	28.3	59.0		
13	57.9	60.6	50.1	57.4	44.5	61.6	25.3	59.0		
14	57.4	60.3	48.4	56.3	42.5	61.3	22.2	57.9		
15	56.7	60.0	47.0	55.8	40.8	61.3	20.1	57.9		
16	56.7	60.0	45.9	55.3	38.5	61.2	17.2	57.9		
17	56.7	60.0	45.0	55.3	37.0	61.2	15.0	57.1		
18	56.7	60.0	44.3	55.3	33.8	60.8	12.0	55.1		
19	56.7	60.0	44.0	55.3	31.1	59.8				
20	56.7	60.0	42.1	55.3	28.8	59.8				

Table 3c. Observed (obs.) and relative (rel.) survival of patients with colon cancer by age category for period 1988-2013 (N=19,089).

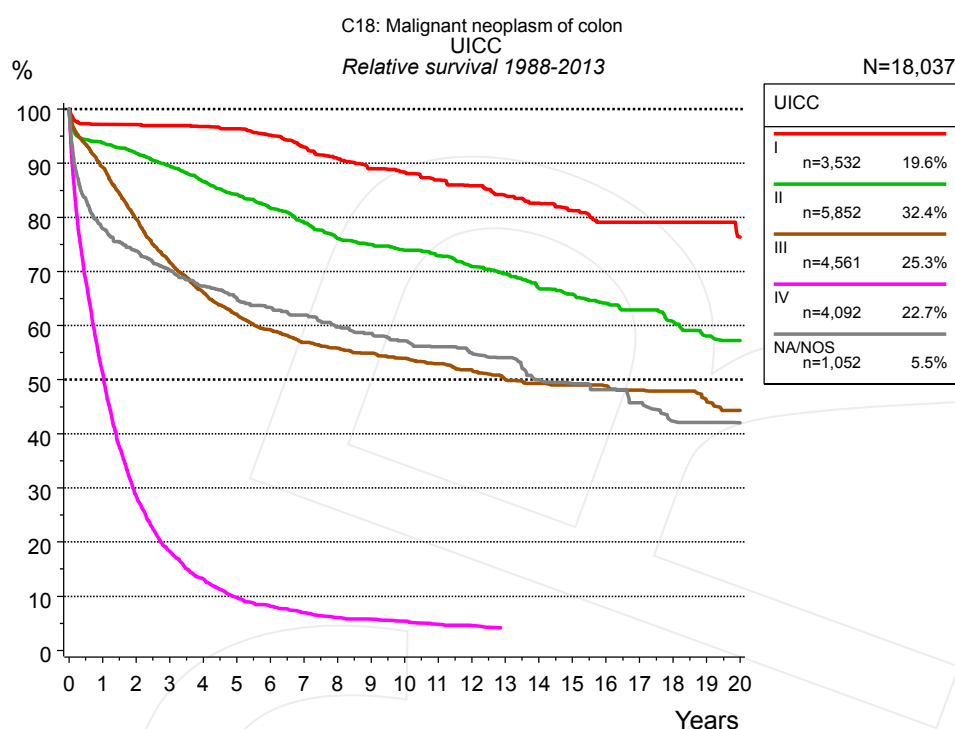


Figure 4a. Relative survival of patients with colon cancer by UICC. For 18,127 of 19,089 cases diagnosed between 1988 and 2013 valid data could be obtained for this item. For a total of 18,037 cases an evaluable classification was established. The grey line represents the subgroup of 1,052 patients with missing values regarding UICC (5.5% of 19,089 patients, the percent values of all other categories are related to n=18,037).

Years	UICC									
	I n=3,532		II n=5,852		III n=4,561		IV n=4,092		NA/NOS n=1,052	
	obs. %	rel. %	obs. %	rel. %	obs. %	rel. %	obs. %	rel. %	obs. %	rel. %
0	100.0	100.0	100.0	100.0	100.0	100.0	100.0	100.0	100.0	100.0
1	94.1	97.1	89.6	93.7	85.7	89.3	49.4	51.3	74.1	77.9
2	91.0	97.1	84.2	91.8	73.7	79.7	26.8	28.5	67.4	73.8
3	87.7	97.0	78.7	89.5	64.0	71.7	16.7	18.3	61.7	70.3
4	84.3	96.8	73.2	86.7	56.9	66.2	11.7	13.2	57.2	67.3
5	81.1	96.4	68.4	84.3	51.6	62.1	8.5	9.8	53.3	65.1
6	77.0	95.2	63.6	81.7	47.5	59.3	6.9	8.2	50.1	63.4
7	72.5	92.9	59.0	79.0	44.1	56.9	5.7	6.9	47.7	61.9
8	68.1	90.9	54.6	76.1	41.8	55.9	4.9	6.1	43.9	59.7
9	64.3	89.0	51.7	75.0	39.7	54.9	4.5	5.8	41.6	58.5
10	61.4	88.4	48.9	73.9	37.5	53.9	4.1	5.4	39.1	57.2
11	58.3	86.9	46.2	72.9	35.6	53.0	3.5	4.8	37.0	56.1
12	55.2	85.9	43.2	70.9	33.7	51.8	3.2	4.6	34.7	54.9
13	51.9	84.0	40.7	69.6	31.3	50.0	2.8	4.2	32.9	54.1
14	49.0	82.6	37.6	66.9	29.8	49.3	2.8	4.2	29.1	50.0
15	46.2	81.3	35.6	65.8	28.9	49.0			27.5	49.3
16	43.2	79.1	33.3	64.2	27.4	48.9			26.0	48.1
17	42.4	79.1	31.7	62.9	26.2	48.1			23.8	45.7
18	40.3	79.1	29.0	60.7	25.0	47.9			21.0	42.3
19	39.1	79.1	26.6	58.1	22.9	46.1			20.3	42.1
20	35.4	76.4	25.4	57.2	21.4	44.4			19.3	42.0

Table 4b. Observed (obs.) and relative (rel.) survival of patients with colon cancer by UICC for period 1988-2013 (N=18,037).

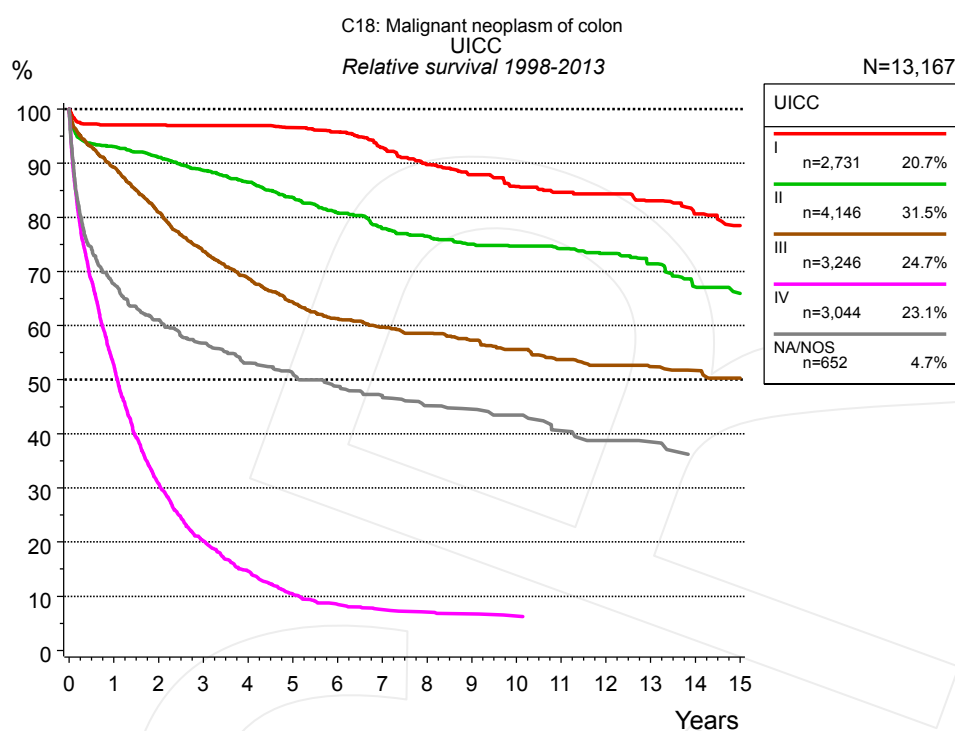


Figure 4c. Relative survival of patients with colon cancer by UICC. For 13,238 of 13,819 cases diagnosed between 1998 and 2013 valid data could be obtained for this item. For a total of 13,167 cases an evaluable classification was established. The grey line represents the subgroup of 652 patients with missing values regarding UICC (4.7% of 13,819 patients, the percent values of all other categories are related to n=13,167).

Years	UICC									
	I n=2,731		II n=4,146		III n=3,246		IV n=3,044		NA/NOS n=652	
	obs. %	rel. %	obs. %	rel. %	obs. %	rel. %	obs. %	rel. %	obs. %	rel. %
0	100.0	100.0	100.0	100.0	100.0	100.0	100.0	100.0	100.0	100.0
1	94.1	97.1	88.9	93.0	85.6	89.2	50.8	52.7	63.9	67.7
2	91.1	97.1	83.5	91.1	74.9	81.0	29.0	30.8	55.1	61.1
3	88.1	96.9	78.0	88.7	65.7	73.7	18.5	20.2	49.3	56.8
4	84.9	96.9	73.0	86.5	59.2	68.8	13.1	14.6	44.6	53.1
5	81.4	96.6	67.8	83.7	53.5	64.4	9.1	10.4	41.5	51.2
6	77.6	95.8	62.9	80.9	49.1	61.3	7.3	8.5	38.4	48.8
7	72.4	92.9	58.2	77.9	46.2	59.7	6.3	7.5	36.1	47.1
8	67.2	89.7	54.9	76.5	44.0	58.6	5.8	7.1	33.5	45.2
9	63.3	87.8	51.7	75.0	41.3	57.3	5.4	6.7	32.2	44.5
10	59.3	85.7	49.4	74.7	38.8	55.6	5.0	6.3	30.7	43.5
11	56.6	84.6	46.9	74.2	36.1	53.7			27.7	40.6
12	54.2	84.3	44.6	73.3	34.4	52.7			25.7	38.8
13	50.8	83.0	41.4	71.4	32.5	52.4			24.8	38.5
14	46.9	80.7	37.3	67.1	31.2	51.7			22.2	36.0
15	43.7	78.4	34.8	65.9	29.8	50.3				

Table 4d. Observed (obs.) and relative (rel.) survival of patients with colon cancer by UICC for period 1998-2013 (N=13,167).

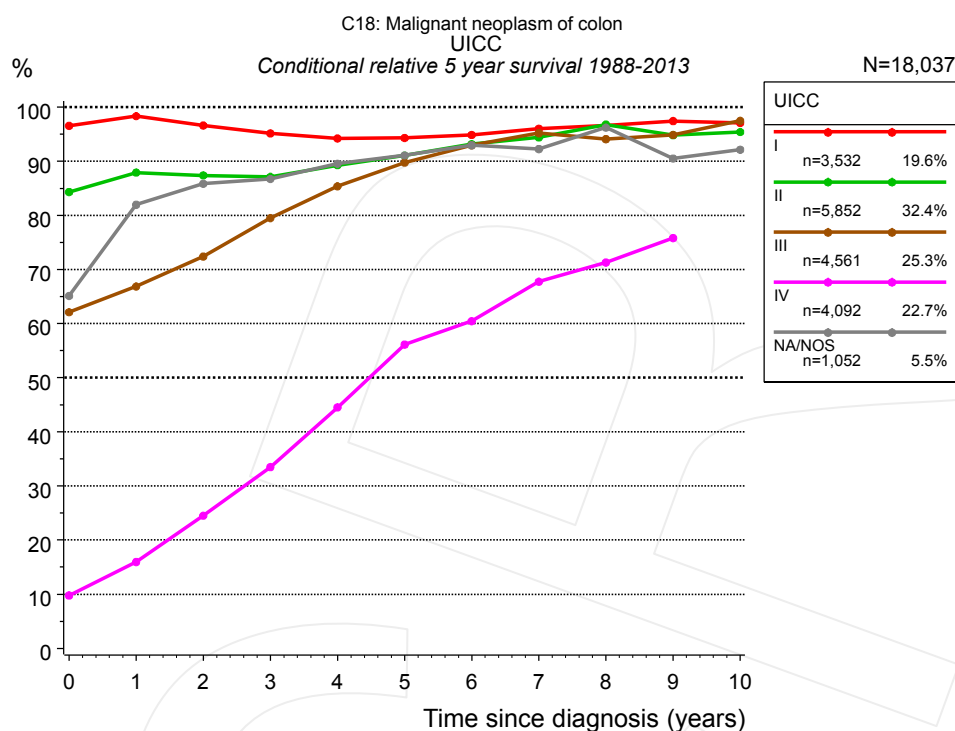


Figure 4e. Conditional relative 5-year survival of patients with colon cancer by UICC. For 18,127 of 19,089 cases diagnosed between 1988 and 2013 valid data could be obtained for this item. For a total of 18,037 cases an evaluable classification was established. The grey line represents the subgroup of 1,052 patients with missing values regarding UICC (5.5% of 19,089 patients, the percent values of all other categories are related to n=18,037).

Years	UICC									
	I		II		III		IV		NA/NOS	
	n	Cond. surv. % 5 yrs	n	Cond. surv. % 5 yrs	n	Cond. surv. % 5 yrs	n	Cond. surv. % 5 yrs	n	Cond. surv. % 5 yrs
0	3,532	96.6	5,852	84.3	4,561	62.1	4,092	9.8	1,052	65.1
1	3,161	98.3	5,011	87.9	3,722	66.9	1,898	16.0	743	82.0
2	2,825	96.6	4,406	87.4	2,996	72.4	943	24.5	652	85.8
3	2,488	95.2	3,824	87.1	2,385	79.5	519	33.5	581	86.7
4	2,164	94.2	3,234	89.3	1,912	85.4	317	44.5	513	89.5
5	1,860	94.3	2,726	91.1	1,517	89.7	197	56.1	459	91.1
6	1,572	94.9	2,272	93.2	1,245	93.0	140	60.5	409	93.0
7	1,344	96.0	1,952	94.4	1,047	95.2	99	67.7	374	92.3
8	1,163	96.6	1,673	96.8	903	94.1	72	71.3	324	96.2
9	973	97.4	1,446	94.8	781	94.9	59	75.8	292	90.5
10	830	97.1	1,235	95.4	659	97.5			257	92.1

Table 4f. Conditional relative 5-year survival of patients with colon cancer by UICC for period 1988-2013 (N=18,037).

Conditional relative survival rates refer to the relative survival probability, in this case for 5 years after cancer diagnosis, compared to the age- and sex-matched population (=100%) under the condition of being alive for a certain time period (x-axis in Figure 4c). The results illustrate to what extent the cancer induced mortality of particular subgroups declines in the subsequent years after detection of the malignancy. For instance, according to the presented survival statistics, patients in the subgroup UICC="I", who are alive at least 3 years after cancer diagnosis, the conditional relative 5-year survival rate is 95.2% (n=2,488).

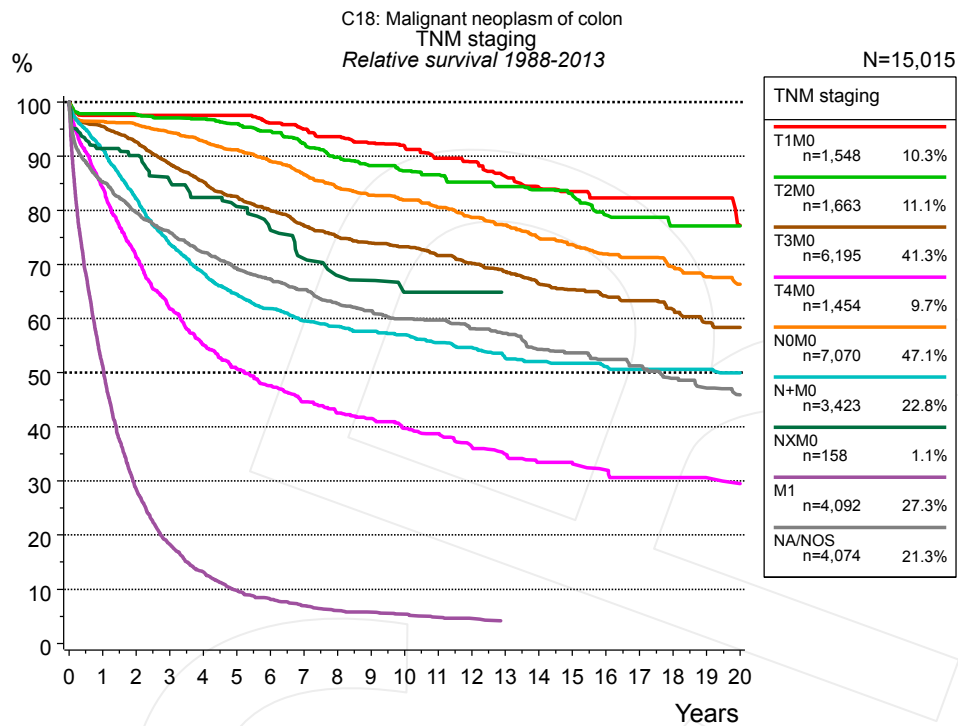


Figure 4g. Relative survival of patients with colon cancer by TNM staging. For 18,127 of 19,089 cases diagnosed between 1988 and 2013 valid data could be obtained for this item. For a total of 15,015 cases an evaluable classification was established. The accumulated percentage exceeds the 100% value because patients are potentially considered in more than one subgroup. The grey line represents the subgroup of 4,074 patients with missing values regarding TNM staging (21.3% of 19,089 patients, the percent values of all other categories are related to n=15,015).

		TNM staging													
		T1M0 n=1,548		T2M0 n=1,663		T3M0 n=6,195		T4M0 n=1,454		N0M0 n=7,070		N+M0 n=3,423		NXM0 n=158	
Years		obs. %	rel. %	obs. %	rel. %	obs. %	rel. %	obs. %	rel. %	obs. %	rel. %	obs. %	rel. %	obs. %	rel. %
0		100.0	100.0	100.0	100.0	100.0	100.0	100.0	100.0	100.0	100.0	100.0	100.0	100.0	100.0
1		95.0	97.5	94.6	97.8	91.7	95.5	80.3	84.2	92.8	96.4	87.7	91.3	88.6	91.4
2		92.3	97.5	91.2	97.7	85.5	92.6	65.3	71.4	88.8	95.8	76.2	82.2	84.6	90.1
3		89.3	97.5	87.7	97.1	78.7	88.6	54.5	61.8	84.3	94.4	66.1	73.9	77.9	85.5
4		86.5	97.5	84.2	96.9	72.9	85.3	46.7	55.2	79.7	92.8	59.2	68.4	72.9	82.4
5		84.2	97.5	80.4	96.0	67.9	82.6	41.5	50.8	75.5	91.2	54.0	64.5	68.4	80.7
6		79.6	96.1	76.2	94.6	63.3	80.0	37.5	47.6	70.9	89.1	50.1	61.8	62.5	76.4
7		76.0	95.0	71.7	92.4	58.7	77.1	33.9	44.6	66.3	86.6	46.6	59.6	57.1	71.1
8		72.4	93.6	67.1	89.8	55.0	75.1	31.1	42.6	62.0	84.2	44.3	58.6	52.4	67.9
9		68.9	92.4	63.6	88.2	52.1	74.0	29.4	41.5	58.7	82.8	42.2	57.7	51.0	67.1
10		66.0	91.9	60.6	87.3	49.7	73.3	27.0	39.7	55.9	81.9	40.3	57.0	46.5	64.9
11		62.2	89.6	58.2	86.5	46.7	71.7	25.5	38.8	52.8	80.6	38.0	55.6	46.5	64.9
12		59.4	89.0	55.1	85.2	44.1	70.3	23.1	36.3	49.5	78.7	36.2	54.7	46.5	64.9
13		55.5	86.2	52.1	84.4	41.4	68.7	21.4	35.0	46.8	77.3	33.5	52.7	44.2	64.9
14		52.1	84.2	49.9	83.8	38.6	66.4	19.7	33.4	43.6	74.9	32.2	52.1		
15		49.8	83.4	47.0	82.8	36.7	65.4	19.1	33.4	41.3	73.7	31.0	51.7		
16		47.4	82.3	43.0	79.1	34.6	64.2	17.8	32.0	38.8	71.9	29.1	51.1		
17		46.8	82.3	41.9	78.7	33.1	63.3	16.7	30.7	37.4	71.3	28.2	50.6		
18		45.5	82.3	38.4	77.1	30.7	61.7	16.3	30.7	34.6	69.5	27.0	50.6		
19		43.5	82.3	37.7	77.1	28.3	59.2	15.7	30.6	32.4	67.7	25.7	50.6		
20		37.6	77.2	35.7	77.1	27.3	58.4	14.3	29.5	30.5	66.4	24.5	50.0		

cont'd Years	TNM staging			
	M1 n=4,092		NA/NOS n=4,074	
	obs. %	rel. %	obs. %	rel. %
0	100.0	100.0	100.0	100.0
1	49.4	51.3	81.3	85.2
2	26.8	28.5	72.8	79.6
3	16.7	18.3	66.5	75.9
4	11.7	13.2	60.8	72.2
5	8.5	9.8	56.1	69.3
6	6.9	8.2	52.3	67.3
7	5.7	6.9	48.8	65.4
8	4.9	6.1	45.0	62.8
9	4.5	5.8	42.2	61.4
10	4.1	5.4	39.5	59.9
11	3.5	4.8	37.9	59.7
12	3.2	4.6	35.2	58.1
13	2.8	4.2	33.2	57.2
14	2.8	4.2	30.2	54.3
15			28.6	53.7
16			26.9	52.5
17			25.1	51.3
18			22.8	49.0
19			21.2	47.2
20			19.6	45.9

Table 4h. Observed (obs.) and relative (rel.) survival of patients with colon cancer by TNM staging for period 1988-2013 (N=25,603).

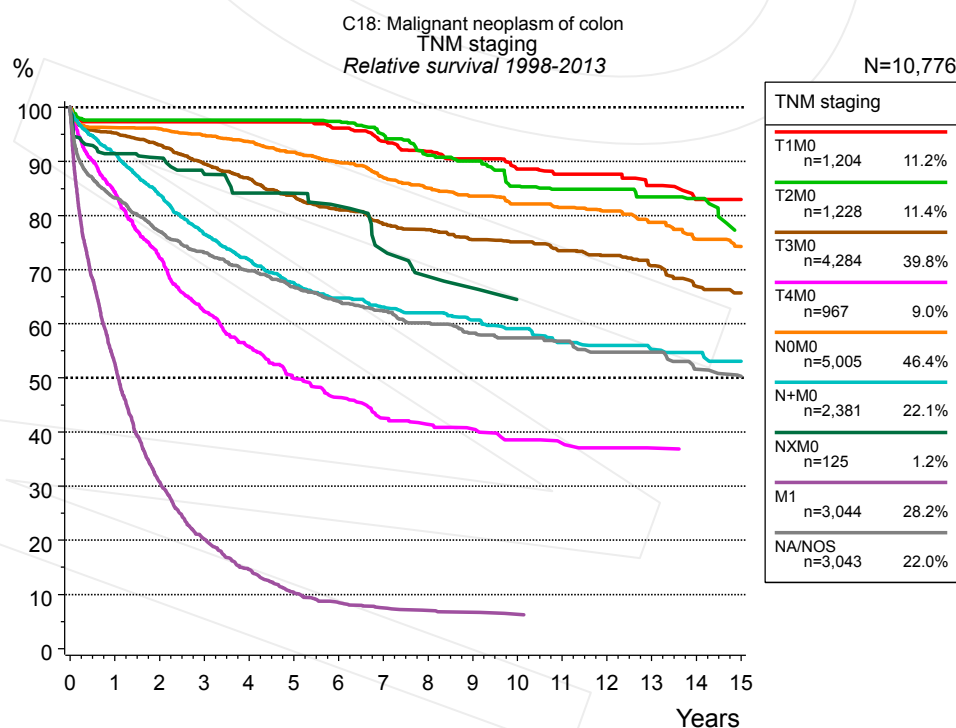


Figure 4i. Relative survival of patients with colon cancer by TNM staging. For 13,238 of 13,819 cases diagnosed between 1998 and 2013 valid data could be obtained for this item. For a total of 10,776 cases an evaluable classification was established. The accumulated percentage exceeds the 100% value because patients are potentially considered in more than one subgroup. The grey line represents the subgroup of 3,043 patients with missing values regarding TNM staging (22.0% of 13,819 patients, the percent values of all other categories are related to n=10,776).

Years	TNM staging													
	T1M0 n=1,204		T2M0 n=1,228		T3M0 n=4,284		T4M0 n=967		N0M0 n=5,005		N+M0 n=2,381		NXM0 n=125	
	obs. %	rel. %	obs. %	rel. %	obs. %	rel. %	obs. %	rel. %	obs. %	rel. %	obs. %	rel. %	obs. %	rel. %
0	100.0	100.0	100.0	100.0	100.0	100.0	100.0	100.0	100.0	100.0	100.0	100.0	100.0	100.0
1	94.8	97.3	94.7	97.7	91.4	95.2	80.6	84.4	92.7	96.3	88.0	91.5	88.8	91.5
2	92.1	97.3	91.9	97.7	85.8	93.1	66.3	72.3	89.0	96.0	77.8	83.9	85.3	90.6
3	89.6	97.3	89.0	97.7	79.5	89.6	55.0	62.3	84.7	94.8	68.5	76.5	80.5	87.7
4	87.1	97.3	85.6	97.7	74.0	86.8	47.6	55.8	80.5	93.7	62.1	71.8	74.8	84.1
5	84.3	97.3	82.2	97.7	68.7	83.7	41.1	49.9	76.1	91.7	56.4	67.6	72.2	84.1
6	79.9	96.2	78.5	97.4	64.0	81.2	37.1	46.4	71.6	89.9	52.4	64.8	68.0	81.8
7	75.2	93.8	73.6	95.0	59.4	78.4	33.0	42.6	66.7	87.0	49.3	63.1	59.9	73.5
8	71.1	91.9	67.8	91.2	56.4	77.4	31.1	41.5	62.7	85.1	47.0	62.0	54.4	68.8
9	67.8	90.5	64.8	90.1	52.9	75.6	29.7	40.6	59.3	83.6	44.2	60.7	52.1	66.6
10	63.6	88.6	59.2	85.5	50.6	75.2	27.3	38.6	56.0	82.2	42.0	59.2	46.7	64.5
11	61.1	87.7	56.6	84.9	47.3	73.5	26.2	37.9	53.2	81.5	38.5	56.5	46.7	64.5
12	58.9	87.7	54.7	84.9	45.0	72.6	25.0	37.1	50.7	80.9	37.2	56.0	46.7	64.5
13	55.0	85.6	51.3	83.4	41.7	70.8	24.1	37.1	47.4	78.8	34.8	55.3		
14	50.9	83.0	48.5	83.2	38.0	67.0	23.2	36.5	43.5	75.7	33.6	54.7		
15	49.9	83.0			35.8	65.7			40.8	74.3	31.9	53.1		

Years	TNM staging			
	M1 n=3,044		NA/NOS n=3,043	
	obs. %	rel. %	obs. %	rel. %
0	100.0	100.0	100.0	100.0
1	50.8	52.7	79.2	83.3
2	29.0	30.8	70.3	77.1
3	18.5	20.2	63.9	73.1
4	13.1	14.6	58.7	69.8
5	9.1	10.4	54.0	66.8
6	7.3	8.5	49.8	64.2
7	6.3	7.5	46.7	62.4
8	5.8	7.1	43.2	60.2
9	5.4	6.7	40.1	58.3
10	5.0	6.3	38.2	57.4
11			36.3	56.9
12			33.8	54.8
13			32.2	54.8
14			28.8	51.6
15			26.9	50.3

Table 4j. Observed (obs.) and relative (rel.) survival of patients with colon cancer by TNM staging for period 1998-2013 (N=18,238).

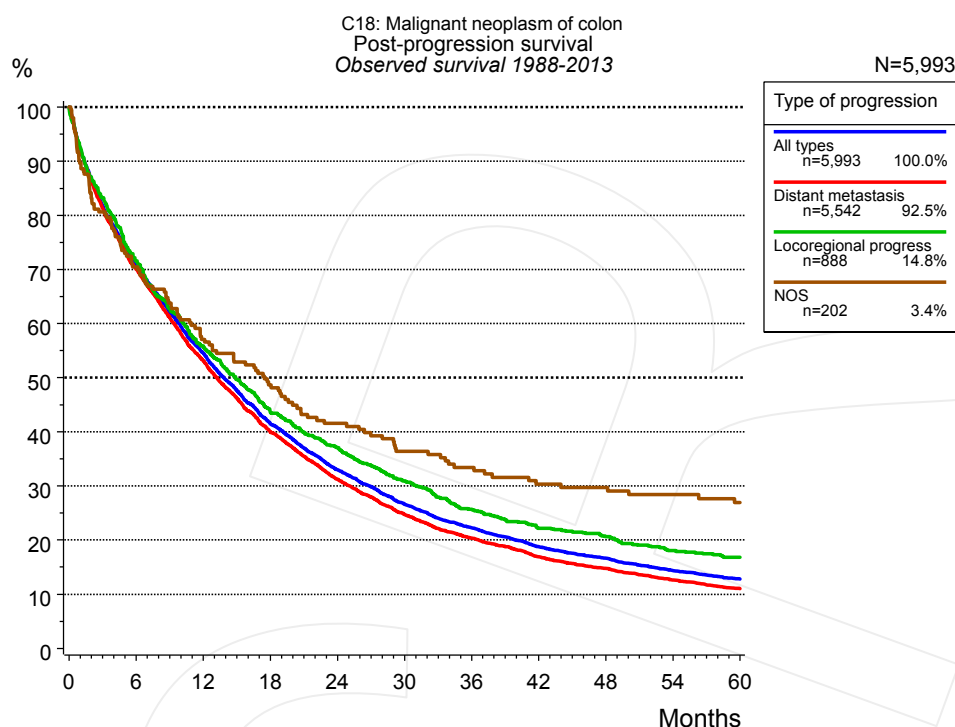


Figure 5a. Observed post-progression survival of 5,993 patients with colon cancer diagnosed between 1988 and 2013 (incl. M1). These 5,993 patients with documented progression events during their course of disease represent 31.4% of the totally 19,089 evaluated cases. Patients with cancer relapse documented via death certificates only were excluded (n=1,453, 7.6%). Multiple progression types on different sites are included in the evaluation even when not occurring synchronously. The NOS (not otherwise specified) class is included under the condition, that it is the one and only progression type during the course of disease.

Medical record documentation often lacks the linguistic severity to distinguish between local relapse, regional lymph node metastasis and distant spread in solid cancers. Frequently, the statement “not specified” is the only information in registries regarding relapse of the disease. The category “All types” denotes all cases who suffered from at least one relapse during the course of disease (incl. primary M1-status). Although, the real number of relapsed patients is likely to be much higher. The accumulated percentage of patients with local relapse or distant metastasis exceeds the 100% value because patients are potentially considered in more than one subgroup.

Months	Type of progression			
	All types n=5,993	Distant metastasis n=5,542	Locoregional progress n=888	NOS n=202
	%	%	%	%
0	100.0	100.0	100.0	100.0
12	54.5	53.2	55.7	57.1
24	33.0	31.2	37.1	41.6
36	22.3	20.4	25.7	33.4
48	16.6	14.7	20.6	29.7
60	12.8	11.0	16.9	27.0

Table 5b. Observed post-progression survival of patients with colon cancer for period 1988-2013 (N=5,993).

Shortcuts

MCR	Munich Cancer Registry, Germany (Tumorregister München)
NCI	National Cancer Institute, USA
SEER	Surveillance, Epidemiology, and End Results, USA
UICC	Union for International Cancer Control, Geneva
DCO	Death certificate only. The death certificate provides the only notification to the registry.
NA	Not available
NOS	Not otherwise specified
OS	Observed/overall survival (Kaplan-Meier estimate)
RS	Relative survival, compared to the general population, ratio of observed to expected survival (Ederer II method), reflecting excess mortality among cancer patients
AS	Assembled survival chart (observed, expected, relative)
PPS	Post-progression survival, survival since first relapse (Kaplan-Meier estimate)
progression	Date of entry: Date of first locoregional recurrence, distant metastasis, unspecified
	Event: Death of all causes
CS	Conditional survival, survival probability under the condition of surviving a given period of time

Recommended Citation

Munich Cancer Registry. Survival C18: Colon cancer [Internet]. 2015 [updated 2015 May 13; cited 2015 Jul 1]. Available from: http://www.tumorregister-muenchen.de/en/facts/surv/surv_C18__E.pdf

Copyright

The content of the public web site provided by the Munich Cancer Registry is available worldwide and free of charge. All documents are free to download, utilize, copy, print-out and distribute, providing that the MCR is referenced.

Disclaimer

The Munich Cancer Registry reserves the right to not be responsible for the topicality, correctness, completeness or quality of the information provided. Liability claims regarding damage caused by the use of any information provided, including any kind of information which is incomplete or incorrect, will therefore be rejected.

Index of figures and tables

Fig./Tbl.		Page
1a	Relative survival by period of diagnosis (chart)	2
1b	Survival by period of diagnosis (table)	3
2a	Survival by gender (chart)	3
2b	Survival by gender (table)	4
3a	Relative survival by age category (chart)	4
3b	Observed survival by age category (chart)	5
3c	Survival by age category (table)	5
4a	Relative survival by UICC 1988+ (chart)	6
4b	Survival by UICC 1988+ (table)	6
4c	Relative survival by UICC 1998+ (chart)	7
4d	Survival by UICC 1998+ (table)	7
4e	Conditional survival by UICC (chart)	8
4f	Conditional survival by UICC (table)	8
4g	Relative survival by TNM staging 1988+ (chart)	9
4h	Survival by TNM staging 1988+ (table)	9
4i	Relative survival by TNM staging 1998+ (chart)	10
4j	Survival by TNM staging 1998+ (table)	11
5a	Observed post-progression survival (chart)	12
5b	Observed post-progression survival (table)	12