

Munich Cancer Registry



- ▶ Baseline statistics
- ▶ Selection Matrix
- ▶ Homepage
- ▶ *Deutsch*

Munich Cancer Registry at Munich Cancer Center
Marchioninstr. 15
Munich, 81377
Germany

<http://www.tumorregister-muenchen.de/en>

Cancer statistics: Survival

C33, C34: Lung cancer

Year of diagnosis	1988-2013
Patients	32,683
Diseases	32,999
Cases evaluated	16,892
Creation date	05/13/2015
Export date	12/30/2014
Population	4.64 m



http://www.tumorregister-muenchen.de/en/facts/surv/surv_C3334E.pdf

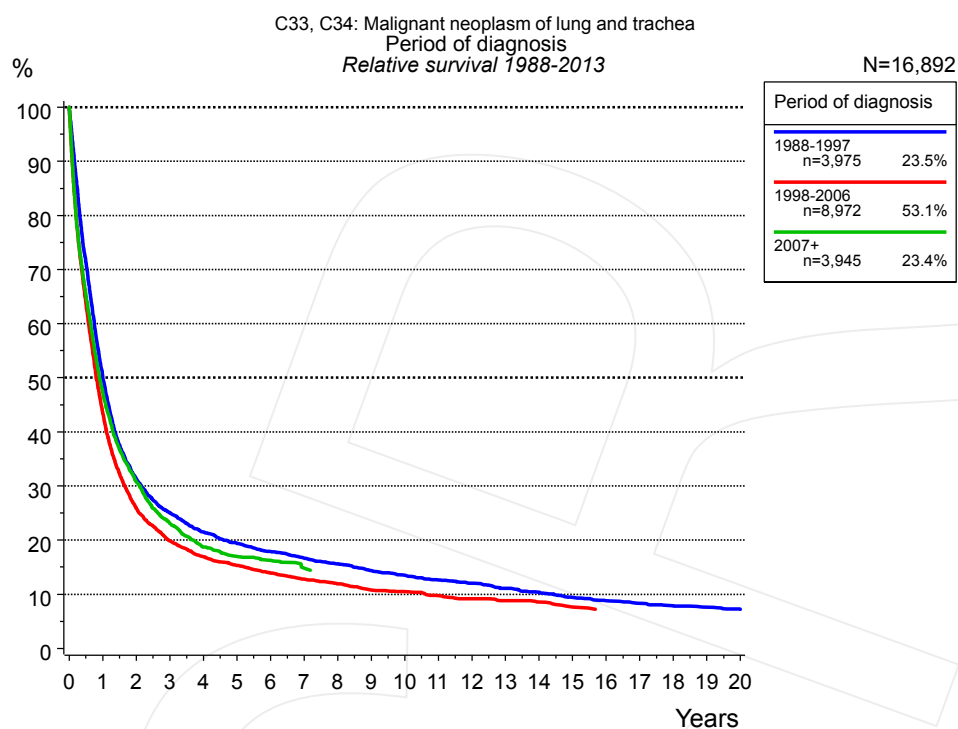


Figure 1a. Relative survival of patients with lung cancer by period of diagnosis. Included in the evaluation are 16,892 cases diagnosed between 1988 and 2013.

The presented survival curves are derived from clinical records with valid follow-up informations, which means that death certificate cases (DCO) cases are omitted from the analysis. With this one restriction, the MCR has provided population-based statistics since 1988, collecting data on all cancer cases in the region of southern Bavaria. Historical data of previous time periods can be heavily selected, therefore, univariate survival comparisons of the presented time periods must be carefully considered. Nonetheless, all calculable survival curves are depicted to facilitate the comparison of long time follow-up analyses of relative survival between particular cancers.

Years	Period of diagnosis					
	1988-1997 n=3,975		1998-2006 n=8,972		2007+ n=3,945	
	obs. %	rel. %	obs. %	rel. %	obs. %	rel. %
0	100.0	100.0	100.0	100.0	100.0	100.0
1	49.0	50.3	42.4	43.5	46.4	47.5
2	29.9	31.4	24.7	25.9	29.4	30.8
3	23.3	25.0	18.5	19.8	21.7	23.1
4	19.6	21.5	15.5	16.9	17.2	18.7
5	17.2	19.4	13.7	15.3	15.2	17.0
6	15.5	17.9	12.2	13.9	14.5	16.3
7	14.1	16.7	11.0	12.8	12.9	14.8
8	13.0	15.6	10.0	11.9		
9	11.7	14.4	8.8	10.8		
10	10.6	13.5	8.3	10.5		
11	9.7	12.6	7.6	9.7		
12	9.0	12.0	7.0	9.1		
13	8.1	11.1	6.6	8.8		
14	7.4	10.4	6.2	8.6		
15	6.5	9.4	5.4	7.6		
16	5.9	8.8				
17	5.4	8.3				
18	5.1	7.9				
19	4.7	7.6				
20	4.3	7.2				

Table 1b. Observed (obs.) and relative (rel.) survival of patients with lung cancer by period of diagnosis for period 1988-2013 (N=16,892).

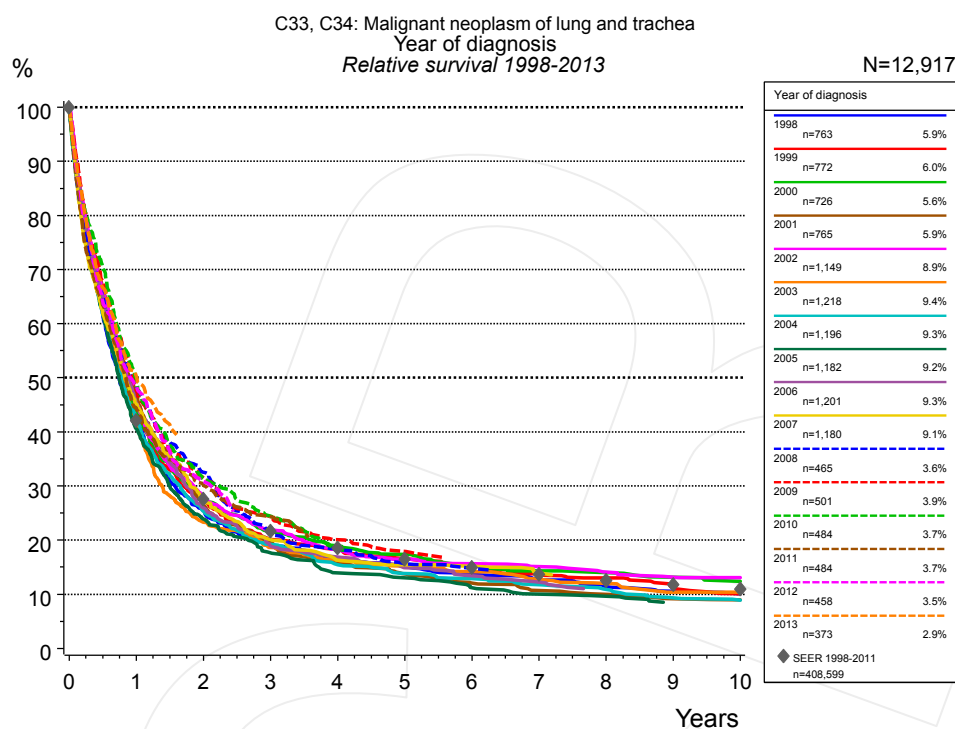


Figure 1c. Relative survival of patients with lung cancer by year of diagnosis. Included in the evaluation are 12,917 cases diagnosed between 1998 and 2013.

The survival results of the SEER program (Surveillance, Epidemiology, and End Results) of the American National Cancer Institute (NCI) are summarized as the period of diagnosis from 1998 to 2011, and are represented by gray diamonds in order to facilitate comparisons between MCR and SEER.

		Year of diagnosis													
		1998 n=763		1999 n=772		2000 n=726		2001 n=765		2002 n=1,149		2003 n=1,218		2004 n=1,196	
Years		obs. %	rel. %	obs. %	rel. %	obs. %	rel. %	obs. %	rel. %	obs. %	rel. %	obs. %	rel. %	obs. %	rel. %
0		100.0	100.0	100.0	100.0	100.0	100.0	100.0	100.0	100.0	100.0	100.0	100.0	100.0	100.0
1		41.2	42.4	43.1	44.4	42.5	43.6	46.1	47.2	44.0	45.1	40.3	41.3	41.7	42.7
2		24.3	25.5	25.9	27.3	26.3	27.6	25.4	26.5	26.5	27.8	22.3	23.3	24.2	25.3
3		18.0	19.3	18.7	20.1	20.4	21.6	18.3	19.5	20.5	21.9	17.4	18.7	18.0	19.2
4		15.2	16.7	16.5	18.2	17.4	18.9	14.8	16.0	16.6	18.2	15.0	16.3	14.4	15.5
5		13.6	15.3	14.6	16.6	15.6	17.3	12.4	13.8	14.8	16.5	13.7	15.2	12.4	13.8
6		11.8	13.6	13.3	15.5	13.6	15.4	10.6	12.0	13.7	15.7	12.5	14.2	11.4	12.9
7		10.8	12.7	11.5	13.7	12.4	14.3	9.3	10.7	13.0	15.1	11.1	12.7	10.3	11.8
8		9.3	11.4	10.7	13.1	11.9	14.0	8.6	10.0	11.9	14.1	10.1	12.0	9.2	10.9
9		8.5	10.5	8.9	11.2	10.9	13.1	7.7	9.2	11.0	13.2	8.5	10.4	7.7	9.3
10		7.8	10.1	7.9	10.1	10.0	12.4	7.5	9.0	10.7	13.1	8.5	10.4	7.3	8.9

		Year of diagnosis													
		2005 n=1,182		2006 n=1,201		2007 n=1,180		2008 n=465		2009 n=501		2010 n=484		2011 n=484	
Years		obs. %	rel. %	obs. %	rel. %	obs. %	rel. %	obs. %	rel. %	obs. %	rel. %	obs. %	rel. %	obs. %	rel. %
0		100.0	100.0	100.0	100.0	100.0	100.0	100.0	100.0	100.0	100.0	100.0	100.0	100.0	100.0
1		39.6	40.5	44.2	45.3	44.1	45.1	47.7	48.8	46.9	47.7	48.8	49.9	43.4	44.4
2		22.9	23.9	25.0	25.9	25.9	27.0	31.2	32.5	30.3	31.5	30.2	31.3	28.9	30.2
3		16.7	17.7	17.9	18.9	18.8	20.1	20.0	21.2	22.8	24.2	23.1	24.4	22.8	24.3
4		12.9	13.9	15.7	16.9	15.0	16.3	16.8	18.3	18.6	20.1	16.9	18.3		
5		11.9	13.0	13.5	14.9	13.9	15.4	14.0	15.7	16.4	17.9				
6		10.0	11.2	12.0	13.4	13.5	15.2	13.3	14.8						
7		8.8	10.0	10.8	12.2	12.1	14.0								
8		8.4	9.6												

cont'd	Year of diagnosis			
	2012 n=458		2013 n=373	
	obs. %	rel. %	obs. %	rel. %
Years				
0	100.0	100.0	100.0	100.0
1	47.6	48.5	49.1	50.2
2	29.4	30.8		

Table 1d. Observed (obs.) and relative (rel.) survival of patients with lung cancer by year of diagnosis for period 1998-2013 (N=12,917).

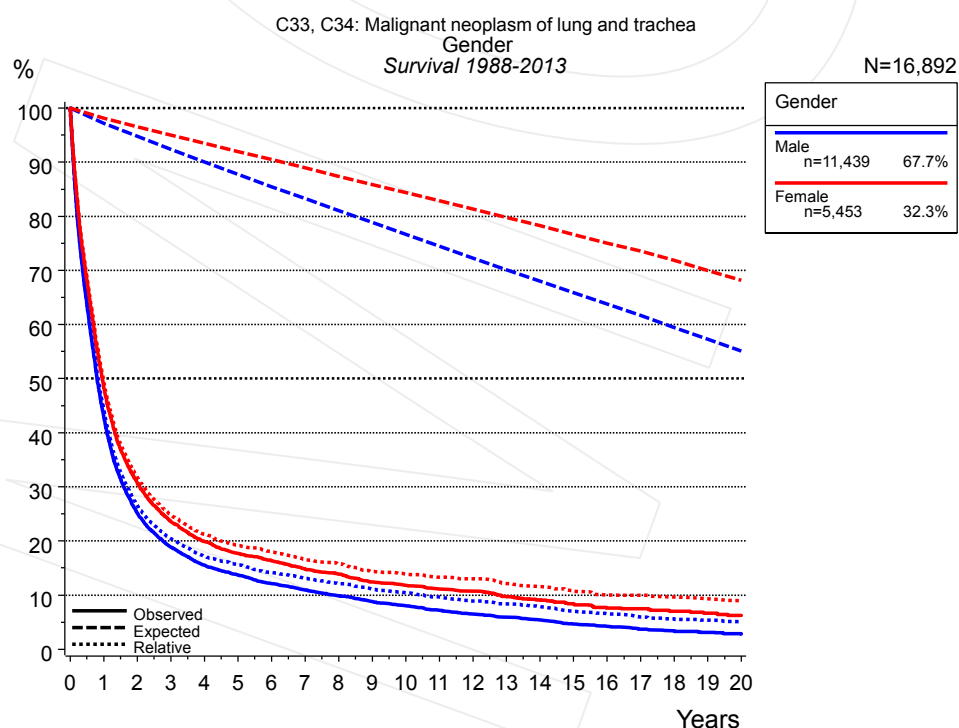


Figure 2a. Survival of patients with lung cancer by gender. Included in the evaluation are 16,892 cases diagnosed between 1988 and 2013.

Years	Gender			
	Male n=11,439		Female n=5,453	
	obs. %	rel. %	obs. %	rel. %
0	100.0	100.0	100.0	100.0
1	43.1	44.3	48.5	49.4
2	25.1	26.5	30.7	31.8
3	18.9	20.4	23.6	24.8
4	15.5	17.2	19.8	21.2
5	13.7	15.6	17.7	19.2
6	12.1	14.2	16.3	18.0
7	10.9	13.1	14.8	16.6
8	9.9	12.2	13.8	15.8
9	8.8	11.1	12.4	14.4
10	8.0	10.4	11.8	13.9
11	7.2	9.6	11.0	13.3
12	6.5	8.9	10.7	13.0
13	5.9	8.3	9.7	12.1
14	5.4	7.9	9.1	11.6
15	4.6	7.0	8.4	10.8
16	4.2	6.5	7.6	10.1
17	3.7	6.0	7.4	10.0
18	3.4	5.6	7.0	9.7
19	3.1	5.4	6.6	9.4
20	2.8	5.1	6.2	9.0

Table 2b. Observed (obs.) and relative (rel.) survival of patients with lung cancer by gender for period 1988-2013 (N=16,892).

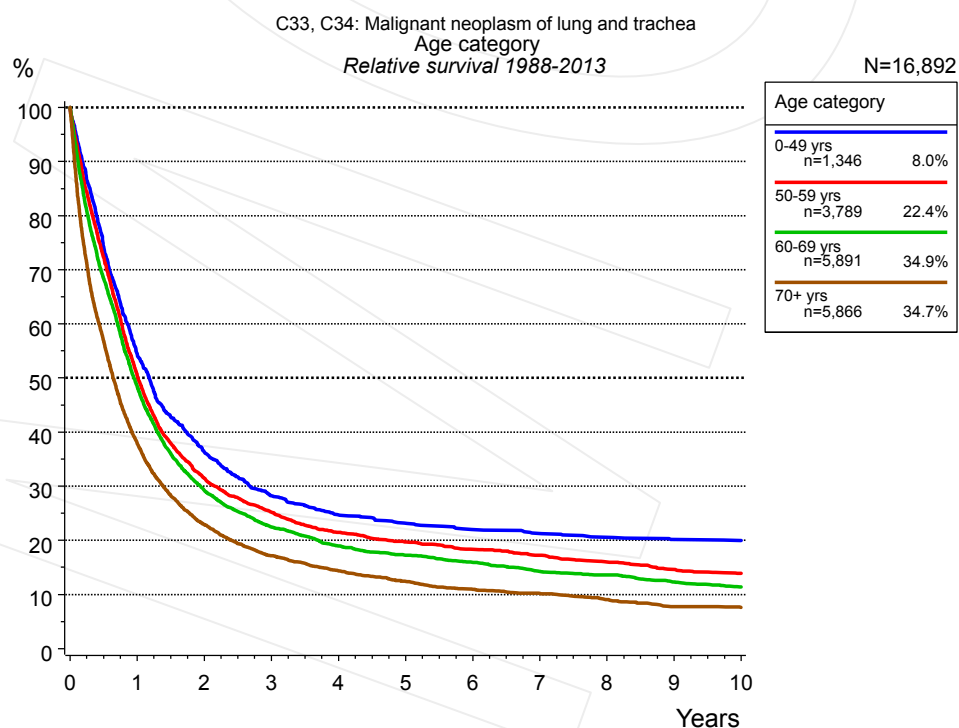


Figure 3a. Relative survival of patients with lung cancer by age category. Included in the evaluation are 16,892 cases diagnosed between 1988 and 2013.

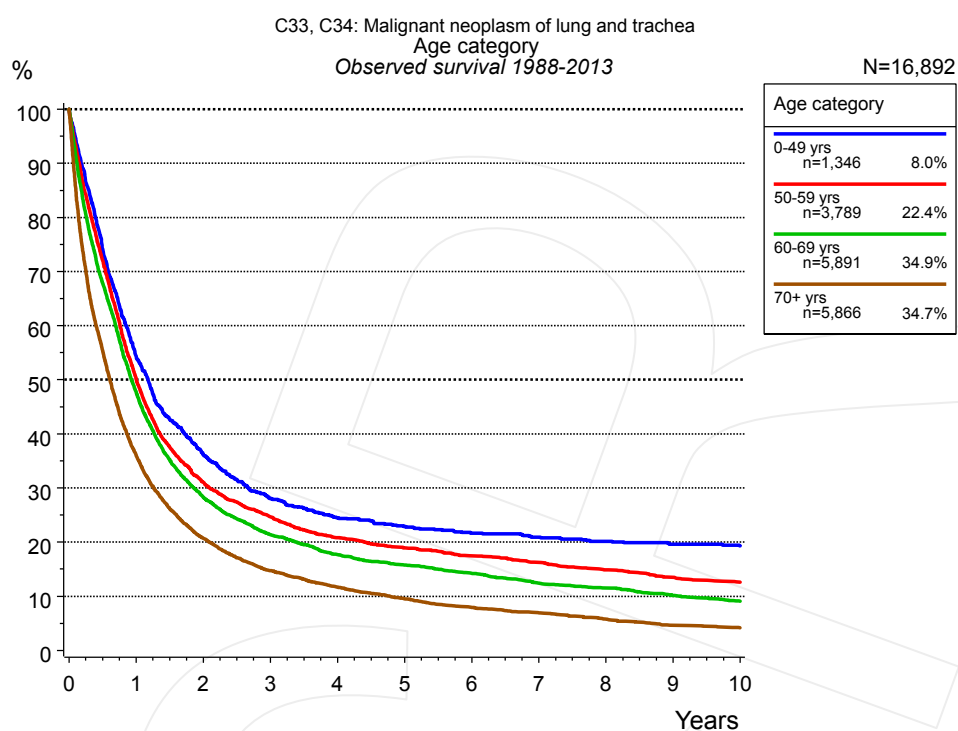


Figure 3b. Observed survival of patients with lung cancer by age category. Included in the evaluation are 16,892 cases diagnosed between 1988 and 2013.

Years	Age category							
	0-49 yrs n=1,346		50-59 yrs n=3,789		60-69 yrs n=5,891		70+ yrs n=5,866	
	obs. %	rel. %	obs. %	rel. %	obs. %	rel. %	obs. %	rel. %
0	100.0	100.0	100.0	100.0	100.0	100.0	100.0	100.0
1	54.4	54.5	50.2	50.6	47.8	48.5	36.1	38.0
2	36.3	36.4	31.1	31.5	28.3	29.3	20.7	22.9
3	28.1	28.2	24.7	25.2	21.4	22.5	14.7	17.2
4	24.5	24.7	20.8	21.5	17.7	19.0	11.7	14.4
5	22.9	23.2	19.0	19.7	15.8	17.3	9.5	12.4
6	21.6	22.0	17.5	18.3	14.2	15.9	7.9	11.0
7	20.9	21.3	16.3	17.3	12.4	14.3	6.9	10.2
8	20.2	20.6	14.9	16.0	11.5	13.6	5.7	9.1
9	19.6	20.2	13.5	14.6	10.2	12.3	4.6	7.8
10	19.3	20.0	12.6	13.9	9.1	11.4	4.1	7.6

Table 3c. Observed (obs.) and relative (rel.) survival of patients with lung cancer by age category for period 1988-2013 (N=16,892).

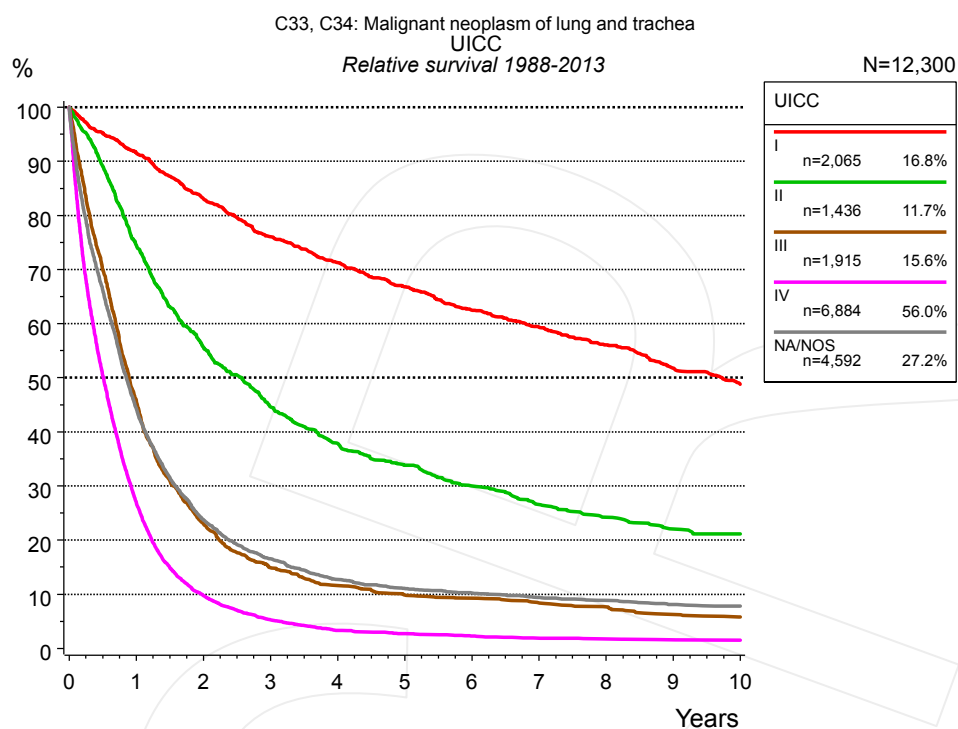


Figure 4a. Relative survival of patients with lung cancer by UICC. For 14,691 of 16,892 cases diagnosed between 1988 and 2013 valid data could be obtained for this item. For a total of 12,300 cases an evaluable classification was established. The grey line represents the subgroup of 4,592 patients with missing values regarding UICC (27.2% of 16,892 patients, the percent values of all other categories are related to n=12,300).

Years	UICC									
	I n=2,065		II n=1,436		III n=1,915		IV n=6,884		NA/NOS n=4,592	
	obs. %	rel. %	obs. %	rel. %	obs. %	rel. %	obs. %	rel. %	obs. %	rel. %
0	100.0	100.0	100.0	100.0	100.0	100.0	100.0	100.0	100.0	100.0
1	89.7	91.5	73.1	74.5	44.8	45.8	26.4	27.0	42.9	44.3
2	79.7	83.1	53.6	55.7	22.1	23.1	9.4	9.7	22.3	23.7
3	71.4	76.1	42.1	44.6	14.1	14.9	5.0	5.3	15.1	16.5
4	65.5	71.3	35.0	37.8	10.7	11.6	3.1	3.3	11.3	12.7
5	60.0	66.8	30.7	33.8	8.9	9.9	2.5	2.7	9.6	11.1
6	54.8	62.5	26.7	30.0	8.3	9.3	2.0	2.3	8.6	10.2
7	50.8	59.3	23.2	26.6	7.3	8.4	1.7	1.9	7.8	9.4
8	46.8	56.1	20.7	24.2	6.6	7.7	1.5	1.8	7.1	8.8
9	42.2	51.8	18.4	22.0	5.2	6.3	1.4	1.6	6.4	8.1
10	38.8	48.8	17.3	21.1	4.7	5.8	1.3	1.5	6.0	7.8

Table 4b. Observed (obs.) and relative (rel.) survival of patients with lung cancer by UICC for period 1988-2013 (N=12,300).

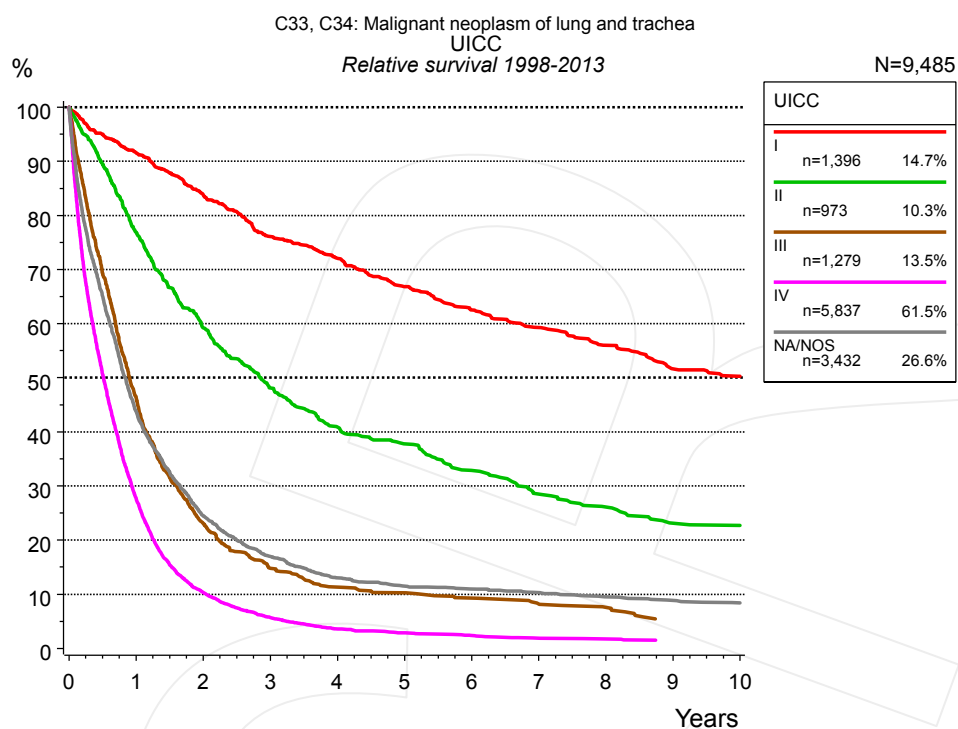


Figure 4c. Relative survival of patients with lung cancer by UICC. For 11,167 of 12,917 cases diagnosed between 1998 and 2013 valid data could be obtained for this item. For a total of 9,485 cases an evaluable classification was established. The grey line represents the subgroup of 3,432 patients with missing values regarding UICC (26.6% of 12,917 patients, the percent values of all other categories are related to n=9,485).

Years	UICC									
	I n=1,396		II n=973		III n=1,279		IV n=5,837		NA/NOS n=3,432	
	obs. %	rel. %	obs. %	rel. %	obs. %	rel. %	obs. %	rel. %	obs. %	rel. %
0	100.0	100.0	100.0	100.0	100.0	100.0	100.0	100.0	100.0	100.0
1	89.8	91.6	75.5	76.9	45.4	46.4	27.1	27.7	42.3	43.7
2	80.5	83.8	57.0	59.2	22.2	23.1	9.9	10.3	23.1	24.5
3	71.6	76.1	45.5	48.1	14.0	14.8	5.4	5.7	15.6	17.0
4	66.3	72.1	38.0	40.9	10.5	11.3	3.4	3.6	11.6	13.0
5	60.1	66.8	34.4	37.8	9.4	10.2	2.6	2.9	10.0	11.5
6	54.9	62.5	29.3	32.9	8.3	9.3	2.1	2.4	9.3	11.0
7	51.0	59.3	25.1	28.5	7.3	8.2	1.7	1.9	8.6	10.3
8	47.0	56.0	22.5	26.1	6.5	7.6	1.5	1.7	7.7	9.5
9	42.3	51.6	19.4	23.1	4.6	5.2	1.3	1.5	7.1	8.8
10	40.2	50.3	19.0	22.7			1.3	1.4	6.5	8.4

Table 4d. Observed (obs.) and relative (rel.) survival of patients with lung cancer by UICC for period 1998-2013 (N=9,485).

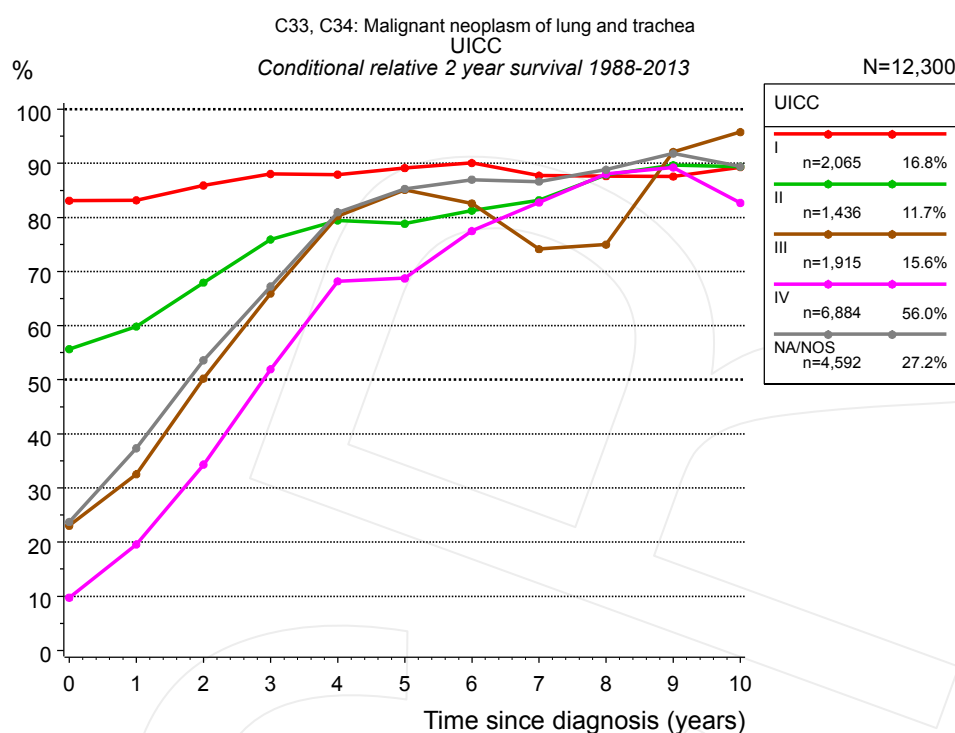


Figure 4e. Conditional relative 2-year survival of patients with lung cancer by UICC. For 14,691 of 16,892 cases diagnosed between 1988 and 2013 valid data could be obtained for this item. For a total of 12,300 cases an evaluable classification was established. The grey line represents the subgroup of 4,592 patients with missing values regarding UICC (27.2% of 16,892 patients, the percent values of all other categories are related to n=12,300).

Years	UICC									
	I	Cond. surv. %	II	Cond. surv. %	III	Cond. surv. %	IV	Cond. surv. %	NA/NOS	Cond. surv. %
	n	2 yrs	n	2 yrs	n	2 yrs	n	2 yrs	n	2 yrs
0	2,065	83.1	1,436	55.7	1,915	23.1	6,884	9.7	4,592	23.7
1	1,775	83.2	996	59.9	804	32.6	1,679	19.6	1,843	37.3
2	1,461	85.9	676	68.0	364	50.2	528	34.3	881	53.6
3	1,228	88.0	486	75.9	212	66.0	242	51.9	548	67.3
4	1,041	87.9	373	79.4	147	80.2	129	68.2	374	80.9
5	859	89.1	293	78.8	111	85.1	89	68.7	287	85.3
6	712	90.1	230	81.3	95	82.6	67	77.5	231	87.0
7	613	87.7	182	83.2	78	74.1	48	82.8	190	86.6
8	518	87.6	151	87.9	65	75.0	33	88.0	151	88.8
9	432	87.6	122	89.7	50	92.1	26	89.2	114	91.8
10	370	89.3	107	89.4	42	95.8	24	82.7	99	89.4

Table 4f. Conditional relative 2-year survival of patients with lung cancer by UICC for period 1988-2013 (N=12,300).

Conditional relative survival rates refer to the relative survival probability, in this case for 2 years after cancer diagnosis, compared to the age- and sex-matched population (=100%) under the condition of being alive for a certain time period (x-axis in Figure 4c). The results illustrate to what extent the cancer induced mortality of particular subgroups declines in the subsequent years after detection of the malignancy. For instance, according to the presented survival statistics, patients in the subgroup UICC="I", who are alive at least 3 years after cancer diagnosis, the conditional relative 2-year survival rate is 88.0% (n=1,228).

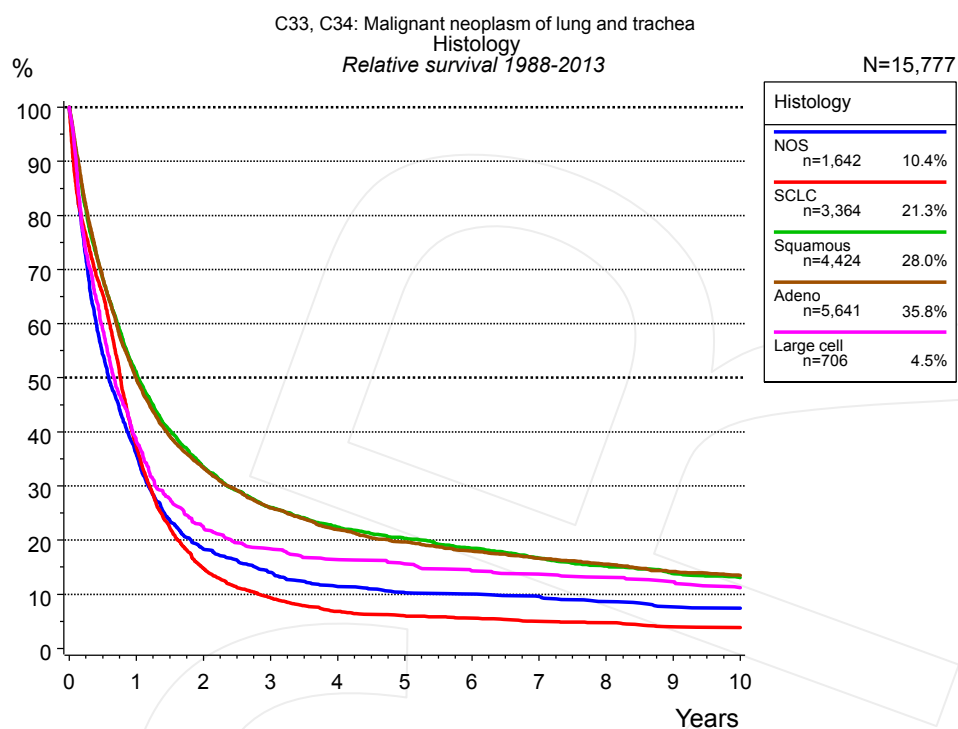


Figure 4g. Relative survival of patients with lung cancer by histology. For 15,777 of 16,892 cases diagnosed between 1988 and 2013 valid data could be obtained for this item.

Years	Histology									
	NOS n=1,642		SCLC n=3,364		Squamous n=4,424		Adeno n=5,641		Large cell n=706	
	obs. %	rel. %	obs. %	rel. %	obs. %	rel. %	obs. %	rel. %	obs. %	rel. %
0	100.0	100.0	100.0	100.0	100.0	100.0	100.0	100.0	100.0	100.0
1	35.0	35.9	36.6	37.4	49.6	51.0	48.8	49.9	37.5	38.3
2	17.5	18.4	14.2	14.8	31.8	33.6	31.9	33.3	21.5	22.3
3	13.1	14.1	8.9	9.3	24.1	26.1	24.4	26.0	17.4	18.4
4	10.5	11.4	6.4	6.9	20.2	22.4	20.2	22.0	15.4	16.4
5	9.3	10.3	5.6	6.0	17.8	20.3	17.7	19.6	14.2	15.6
6	8.8	10.0	5.0	5.6	15.7	18.5	15.9	18.0	12.8	14.3
7	8.3	9.6	4.4	5.0	13.8	16.7	14.4	16.7	12.1	13.7
8	7.3	8.7	4.2	4.8	12.2	15.2	13.1	15.5	11.4	13.2
9	6.4	7.7	3.4	4.0	10.8	13.8	11.7	14.2	10.5	12.3
10	6.1	7.5	3.3	3.9	9.9	13.1	10.8	13.5	9.4	11.2

Table 4h. Observed (obs.) and relative (rel.) survival of patients with lung cancer by histology for period 1988-2013 (N=15,777).

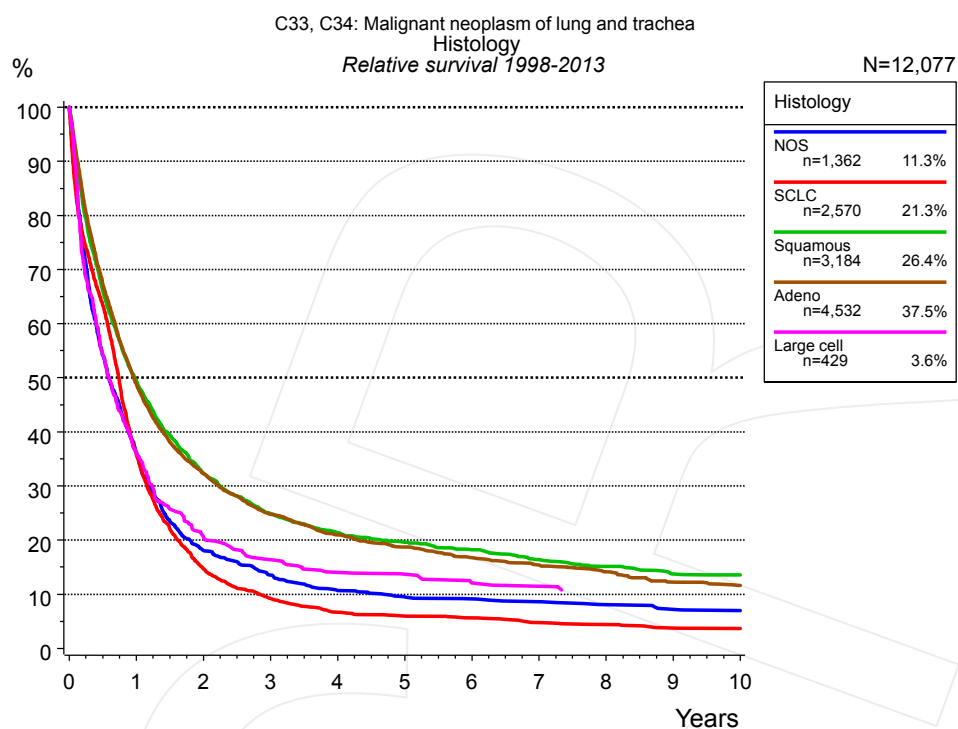


Figure 4i. Relative survival of patients with lung cancer by histology. For 12,077 of 12,917 cases diagnosed between 1998 and 2013 valid data could be obtained for this item.

Years	Histology									
	NOS n=1,362		SCLC n=2,570		Squamous n=3,184		Adeno n=4,532		Large cell n=429	
	obs. %	rel. %	obs. %	rel. %	obs. %	rel. %	obs. %	rel. %	obs. %	rel. %
0	100.0	100.0	100.0	100.0	100.0	100.0	100.0	100.0	100.0	100.0
1	35.3	36.3	35.1	35.9	48.1	49.5	47.7	48.8	35.6	36.2
2	17.2	18.1	14.2	14.7	30.7	32.3	31.0	32.3	19.8	20.5
3	12.6	13.5	8.7	9.2	23.0	24.9	23.3	24.8	15.7	16.4
4	9.8	10.7	6.3	6.7	19.2	21.3	19.3	20.9	13.2	14.1
5	8.5	9.5	5.5	6.0	17.2	19.6	16.9	18.7	12.6	13.7
6	8.1	9.1	5.2	5.7	15.5	18.2	14.8	16.7	10.8	12.1
7	7.6	8.6	4.3	4.8	13.7	16.4	13.3	15.4	10.4	11.5
8	6.8	8.1	3.9	4.4	12.3	15.1	11.9	14.1	9.4	10.4
9	6.1	7.2	3.3	3.8	10.8	13.7	10.1	12.3		
10	5.9	7.0	3.2	3.7	10.4	13.6	9.3	11.6		

Table 4j. Observed (obs.) and relative (rel.) survival of patients with lung cancer by histology for period 1998-2013 (N=12,077).

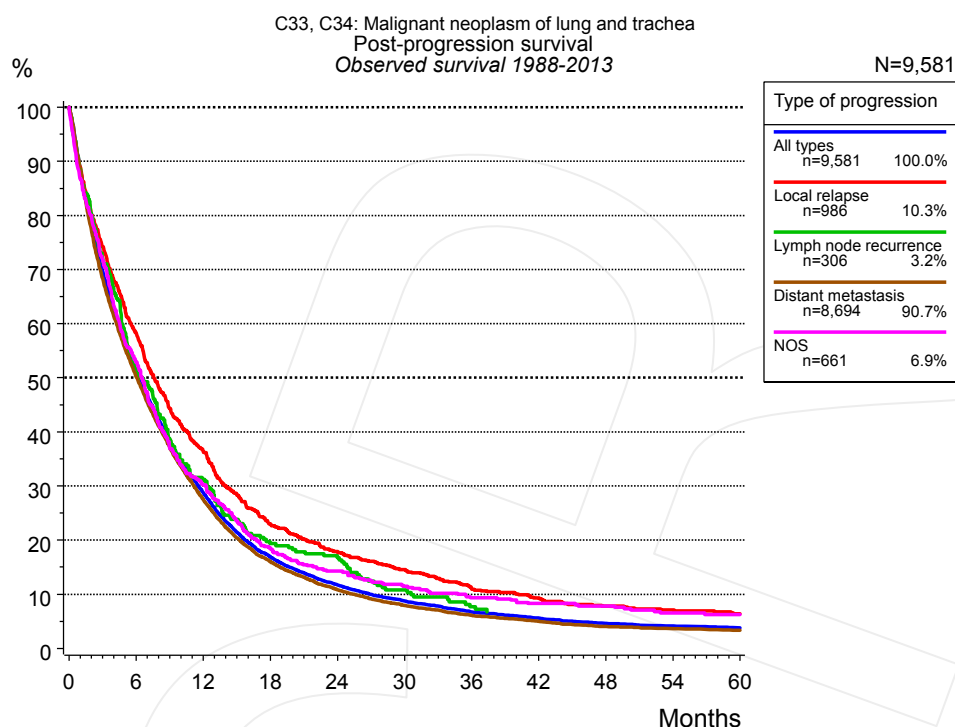


Figure 5a. Observed post-progression survival of 9,581 patients with lung cancer diagnosed between 1988 and 2013 (incl. M1). These 9,581 patients with documented progression events during their course of disease represent 56.7% of the totally 16,892 evaluated cases. Patients with cancer relapse documented via death certificates only were excluded (n=3,261, 19.3%). Multiple progression types on different sites are included in the evaluation even when not occurring synchronously. The NOS (not otherwise specified) class is included under the condition, that it is the one and only progression type during the course of disease.

Medical record documentation often lacks the linguistic severity to distinguish between local relapse, regional lymph node metastasis and distant spread in solid cancers. Frequently, the statement “not specified” is the only information in registries regarding relapse of the disease. The category “All types” denotes all cases who suffered from at least one relapse during the course of disease (incl. primary M1-status). Although, the real number of relapsed patients is likely to be much higher. The accumulated percentage of patients with local relapse or distant metastasis exceeds the 100% value because patients are potentially considered in more than one subgroup.

Months	Type of progression				
	All types n=9,581	Local relapse n=986	Lymph node recurrence n=306	Distant metastasis n=8,694	NOS n=661
	%	%	%	%	%
0	100.0	100.0	100.0	100.0	100.0
12	28.8	36.3	31.2	27.5	30.1
24	11.7	17.9	16.7	10.8	14.3
36	6.8	11.0	7.7	6.1	9.3
48	4.6	7.8		4.0	7.8
60	3.8	6.4		3.3	6.2

Table 5b. Observed post-progression survival of patients with lung cancer for period 1988-2013 (N=9,581).

Shortcuts

MCR	Munich Cancer Registry, Germany (Tumorregister München)
NCI	National Cancer Institute, USA
SEER	Surveillance, Epidemiology, and End Results, USA
UICC	Union for International Cancer Control, Geneva
DCO	Death certificate only. The death certificate provides the only notification to the registry.
NA	Not available
NOS	Not otherwise specified
OS	Observed/overall survival (Kaplan-Meier estimate)
RS	Relative survival, compared to the general population, ratio of observed to expected survival (Ederer II method), reflecting excess mortality among cancer patients
AS	Assembled survival chart (observed, expected, relative)
PPS	Post-progression survival, survival since first relapse (Kaplan-Meier estimate)
progression	Date of entry: Date of first locoregional recurrence, distant metastasis, unspecified
	Event: Death of all causes
CS	Conditional survival, survival probability under the condition of surviving a given period of time

Recommended Citation

Munich Cancer Registry. Survival C33, C34: Lung cancer [Internet]. 2015 [updated 2015 May 13; cited 2015 Jul 1]. Available from: http://www.tumorregister-muenchen.de/en/facts/surv/surv_C3334E.pdf

Copyright

The content of the public web site provided by the Munich Cancer Registry is available worldwide and free of charge. All documents are free to download, utilize, copy, print-out and distribute, providing that the MCR is referenced.

Disclaimer

The Munich Cancer Registry reserves the right to not be responsible for the topicality, correctness, completeness or quality of the information provided. Liability claims regarding damage caused by the use of any information provided, including any kind of information which is incomplete or incorrect, will therefore be rejected.

Index of figures and tables

Fig./Tbl.	Page
1a Relative survival by period of diagnosis (chart)	2
1b Survival by period of diagnosis (table)	2
1c Relative survival by year of diagnosis (chart)	3
1d Survival by year of diagnosis (table)	3
2a Survival by gender (chart)	4
2b Survival by gender (table)	5
3a Relative survival by age category (chart)	5
3b Observed survival by age category (chart)	6
3c Survival by age category (table)	6
4a Relative survival by UICC 1988+ (chart)	7
4b Survival by UICC 1988+ (table)	7
4c Relative survival by UICC 1998+ (chart)	8
4d Survival by UICC 1998+ (table)	8
4e Conditional survival by UICC (chart)	9
4f Conditional survival by UICC (table)	9
4g Relative survival by histology 1988+ (chart)	10
4h Survival by histology 1988+ (table)	10
4i Relative survival by histology 1998+ (chart)	11
4j Survival by histology 1998+ (table)	11
5a Observed post-progression survival (chart)	12
5b Observed post-progression survival (table)	12