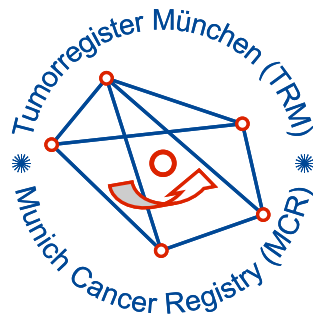


# Munich Cancer Registry



- ▶ Baseline statistics
- ▶ Selection Matrix
- ▶ Homepage
- ▶ *Deutsch*

Munich Cancer Registry at Munich Cancer Center  
Marchioninstr. 15  
Munich, 81377  
Germany

<http://www.tumorregister-muenchen.de/en>

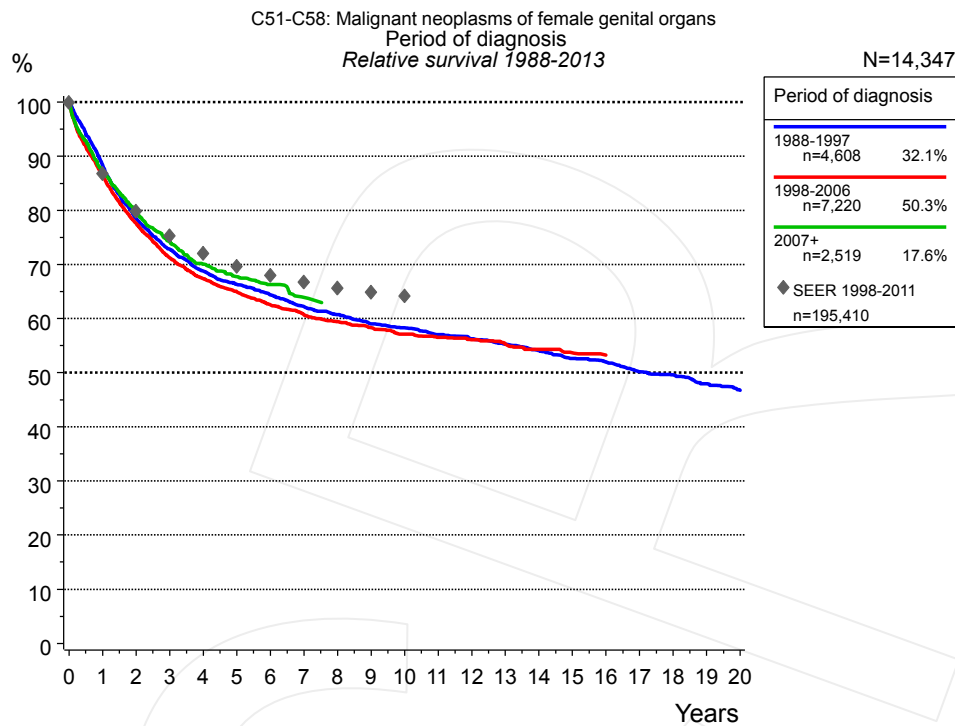
## Cancer statistics: Survival

### C51-C58: Fem. genitale cancer

Year of diagnosis	1988-2013
Patients	24,845
Diseases	25,331
Cases evaluated	14,347
Creation date	05/13/2015
Export date	12/30/2014
Population (females)	2.36 m



[http://www.tumorregister-muenchen.de/en/facts/surv/surv\\_C5158E.pdf](http://www.tumorregister-muenchen.de/en/facts/surv/surv_C5158E.pdf)



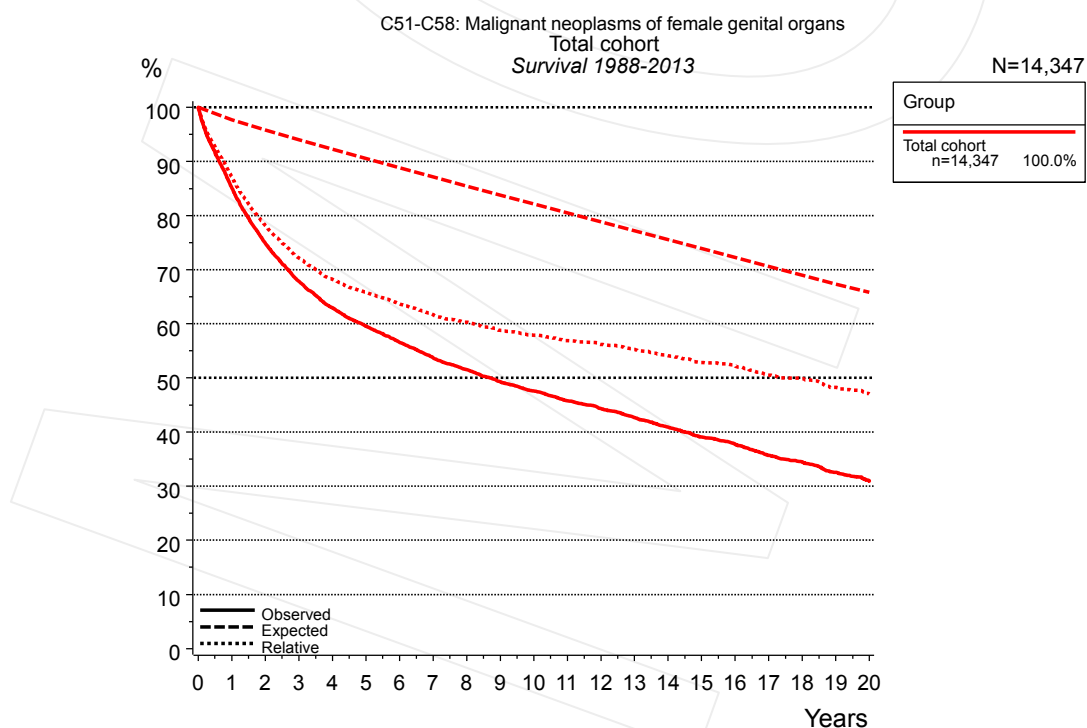
**Figure 1a.** Relative survival of patients with fem. genitale cancer by period of diagnosis. Included in the evaluation are 14,347 cases diagnosed between 1988 and 2013.

The survival results of the SEER program (Surveillance, Epidemiology, and End Results) of the American National Cancer Institute (NCI) are summarized as the period of diagnosis from 1998 to 2011, and are represented by gray diamonds in order to facilitate comparisons between MCR and SEER.

The presented survival curves are derived from clinical records with valid follow-up informations, which means that death certificate cases (DCO) cases are omitted from the analysis. With this one restriction, the MCR has provided population-based statistics since 1988, collecting data on all cancer cases in the region of southern Bavaria. Historical data of previous time periods can be heavily selected, therefore, univariate survival comparisons of the presented time periods must be carefully considered. Nonetheless, all calculable survival curves are depicted to facilitate the comparison of long time follow-up analyses of relative survival between particular cancers.

Years	Period of diagnosis					
	1988-1997		1998-2006		2007+	
	n=4,608		n=7,220		n=2,519	
	obs. %	rel. %	obs. %	rel. %	obs. %	rel. %
0	100.0	100.0	100.0	100.0	100.0	100.0
1	86.4	88.3	84.4	86.5	85.2	87.1
2	75.2	78.5	74.3	77.6	76.7	79.7
3	68.3	72.8	67.0	71.2	70.1	74.2
4	63.2	68.8	62.3	67.4	65.0	70.1
5	59.7	66.3	58.9	64.9	61.8	67.7
6	56.8	64.4	55.8	62.6	59.4	66.3
7	53.8	62.2	53.2	60.8	56.4	63.9
8	51.5	60.7	51.1	59.4		
9	49.0	59.0	49.2	58.3		
10	47.4	58.3	47.4	57.1		
11	45.4	57.0	46.0	56.6		
12	43.9	56.3	44.7	56.1		
13	42.2	55.3	43.2	55.3		
14	40.4	54.1	41.6	54.3		
15	38.4	52.6	40.4	53.7		
16	37.1	52.0				
17	35.0	50.2				
18	33.9	49.6				
19	32.0	48.0				
20	30.4	46.8				

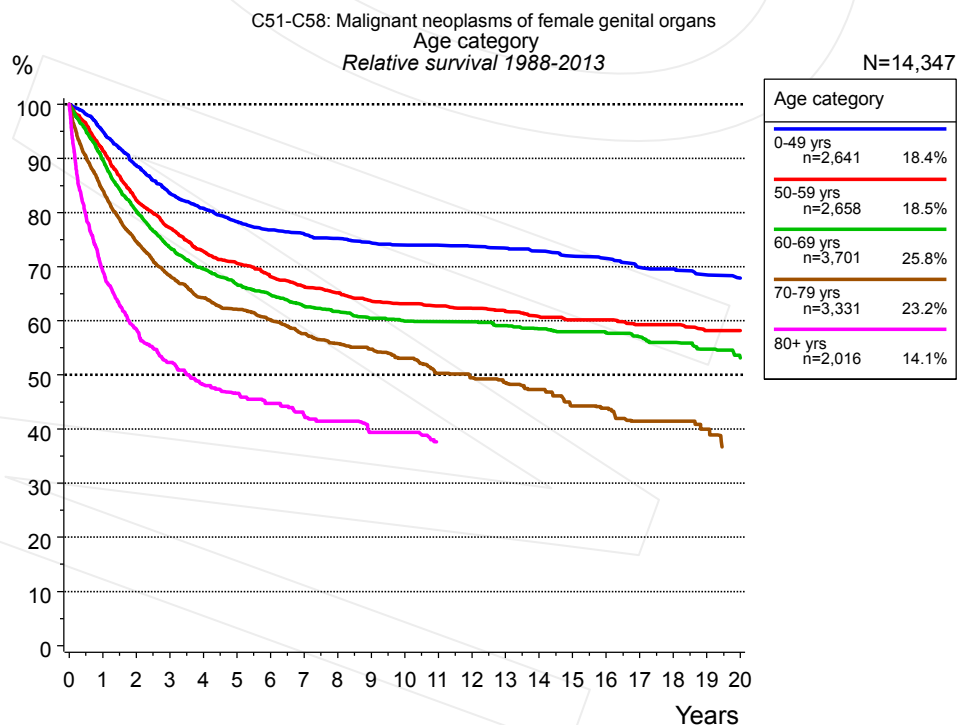
**Table 1b.** Observed (obs.) and relative (rel.) survival of patients with fem. genitale cancer by period of diagnosis for period 1988-2013 (N=14,347).



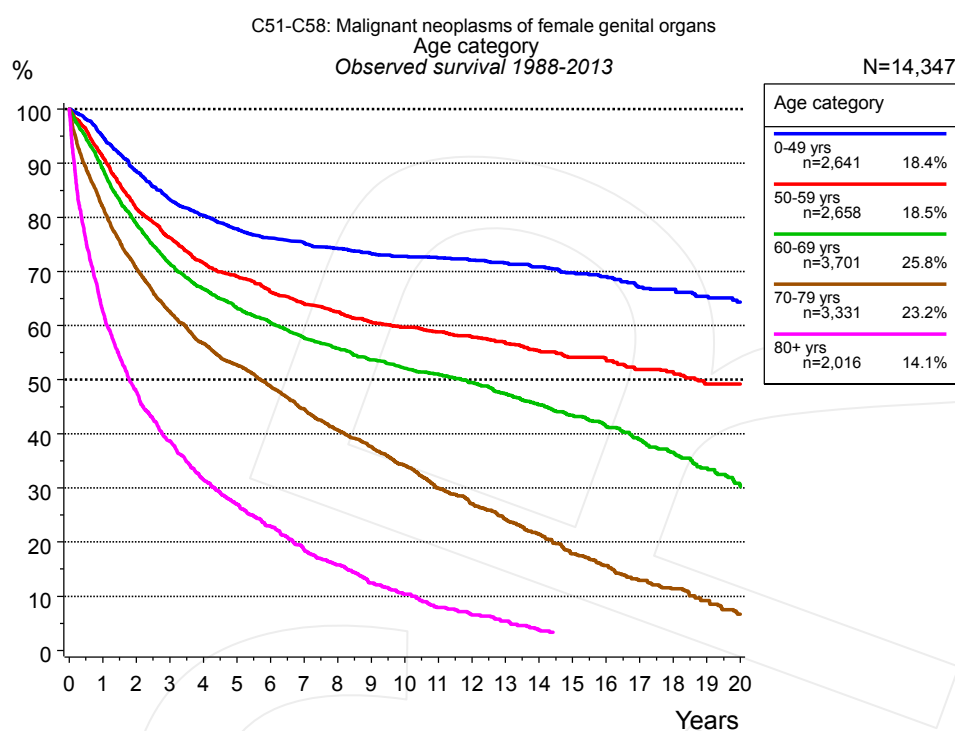
**Figure 2a.** Observed, expected and relative survival of the total cohort with fem. genitale cancer. Included in the evaluation are 14,347 cases diagnosed between 1988 and 2013.

Years	Group	
	Total cohort n=14,347	
	obs. %	rel. %
0	100.0	100.0
1	85.2	87.2
2	74.9	78.2
3	67.9	72.2
4	63.0	68.2
5	59.6	65.8
6	56.6	63.7
7	53.8	61.7
8	51.5	60.3
9	49.3	58.8
10	47.6	57.9
11	45.8	56.9
12	44.3	56.2
13	42.7	55.3
14	40.9	54.1
15	39.1	52.8
16	37.8	52.2
17	35.7	50.5
18	34.5	49.9
19	32.6	48.3
20	31.0	47.0

**Table 2b.** Observed (obs.) and relative (rel.) survival of the total cohort with fem. genitale cancer for period 1988-2013 (N=14,347).



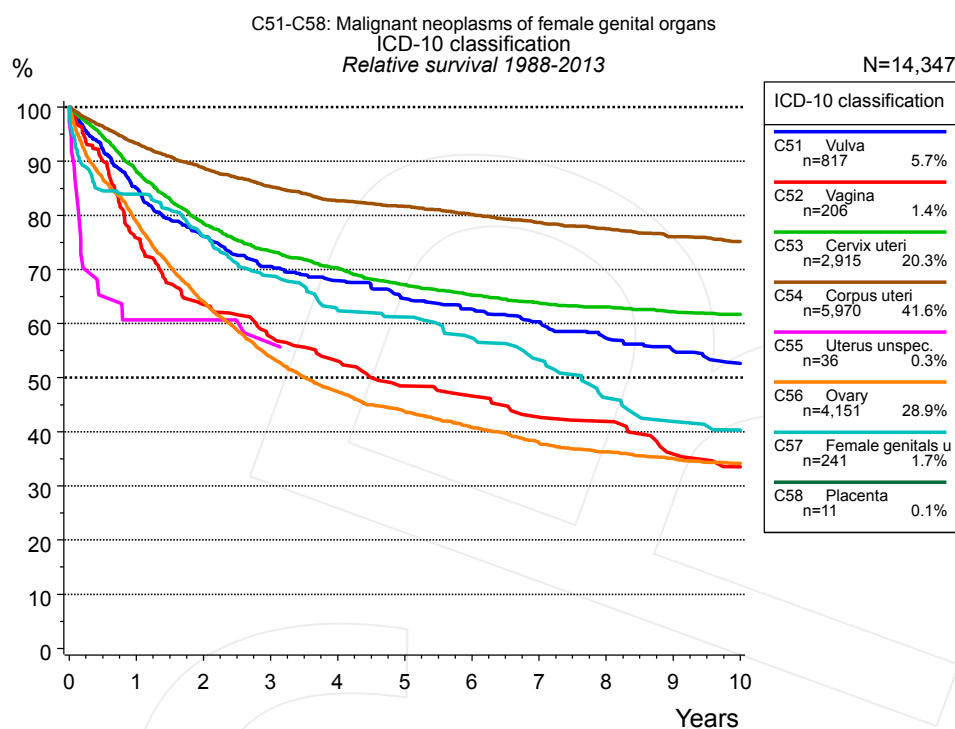
**Figure 3a.** Relative survival of patients with fem. genitale cancer by age category. Included in the evaluation are 14,347 cases diagnosed between 1988 and 2013.



**Figure 3b.** Observed survival of patients with fem. genitale cancer by age category. Included in the evaluation are 14,347 cases diagnosed between 1988 and 2013.

Years	Age category									
	0-49 yrs n=2,641		50-59 yrs n=2,658		60-69 yrs n=3,701		70-79 yrs n=3,331		80+ yrs n=2,016	
	obs. %	rel. %	obs. %	rel. %	obs. %	rel. %	obs. %	rel. %	obs. %	rel. %
0	100.0	100.0	100.0	100.0	100.0	100.0	100.0	100.0	100.0	100.0
1	95.0	95.1	91.2	91.6	89.0	89.8	82.0	84.2	62.6	69.1
2	88.6	88.8	81.6	82.3	78.9	80.4	70.7	74.7	47.8	58.4
3	83.3	83.6	76.2	77.2	71.4	73.5	62.6	68.4	38.7	52.3
4	80.4	80.8	71.6	72.8	66.8	69.6	56.7	64.3	31.6	48.2
5	77.8	78.3	69.0	70.6	63.2	66.8	52.7	62.1	27.0	46.6
6	76.2	76.8	66.2	68.2	60.6	64.8	48.8	60.2	22.9	44.8
7	75.3	76.1	64.1	66.4	57.7	62.7	44.6	57.7	18.6	42.5
8	74.3	75.2	62.5	65.2	55.8	61.7	40.7	55.8	15.8	41.4
9	73.3	74.4	60.7	63.7	53.7	60.5	37.6	54.8	12.4	39.4
10	72.8	74.0	59.7	63.2	52.1	60.0	34.3	53.1	10.4	39.4
11	72.5	74.0	58.8	62.8	51.1	59.9	29.9	50.3	7.9	37.6
12	72.1	73.8	57.9	62.4	49.5	59.8	27.1	49.5		
13	71.6	73.5	56.8	61.8	47.4	59.1	24.2	48.6		
14	70.9	72.9	55.4	60.8	45.4	58.6	21.4	47.3		
15	69.7	72.0	54.2	60.2	43.5	58.0	17.8	44.3		
16	69.1	71.5	53.8	60.2	41.3	57.8	15.7	43.9		
17	67.1	69.9	51.9	59.3	39.0	57.1	12.9	41.5		
18	66.7	69.6	51.5	59.3	36.6	56.0	11.4	41.5		
19	65.4	68.5	49.2	58.2	33.7	54.8	9.2	40.0		
20	64.4	67.9	49.2	58.2	30.2	53.1				

**Table 3c.** Observed (obs.) and relative (rel.) survival of patients with fem. genitale cancer by age category for period 1988-2013 (N=14,347).



**Figure 4a.** Relative survival of patients with fem. genitale cancer by ICD-10 classification. Included in the evaluation are 14,347 cases diagnosed between 1988 and 2013. Subgroups with sample size <15 are dropped from the chart.

ICD-10 classification															
	C51 Vulva		C52 Vagina		C53 Cervix uteri		C54 Corpus uteri		C55 Uterus unspec.		C56 Ovary		C57 Female genitals unspec.		
	n=817		n=206		n=2,915		n=5,970		n=36		n=4,151		n=241		
Years	obs. %	rel. %	obs. %	rel. %	obs. %	rel. %	obs. %	rel. %	obs. %	rel. %	obs. %	rel. %	obs. %	rel. %	
0	100.0	100.0	100.0	100.0	100.0	100.0	100.0	100.0	100.0	100.0	100.0	100.0	100.0	100.0	
1	81.4	85.0	73.2	75.9	87.0	88.2	91.0	93.3	57.9	60.6	77.3	78.9	82.0	83.9	
2	70.3	76.1	59.5	63.5	76.7	78.6	84.6	88.8	57.9	60.6	61.8	64.1	72.4	76.1	
3	63.1	70.5	52.8	57.6	71.0	73.4	79.3	85.3	51.8	56.4	51.2	53.9	64.1	68.8	
4	58.9	67.9	47.5	53.1	67.4	70.3	75.1	82.7			44.4	47.4	57.1	62.4	
5	54.5	64.6	41.8	48.5	63.8	67.2	72.4	81.6			40.3	43.7	54.7	61.2	
6	51.2	62.6	39.1	46.6	61.4	65.2	69.4	80.2			37.1	40.8	50.2	57.3	
7	48.1	60.3	35.4	42.7	59.6	63.8	66.4	78.7			34.0	37.9	45.5	53.3	
8	44.4	57.3	33.9	41.9	58.4	63.0	63.8	77.5			32.0	36.3	38.4	46.3	
9	41.4	55.0	28.2	35.9	57.0	62.2	60.9	76.0			30.5	35.0	33.9	41.9	
10	38.7	52.6	25.6	33.5	56.0	61.7	58.6	75.2			29.2	34.2	32.2	40.3	

ICD-10 classification  
cont'd

C58 Placenta  
n=11

Years

obs. %

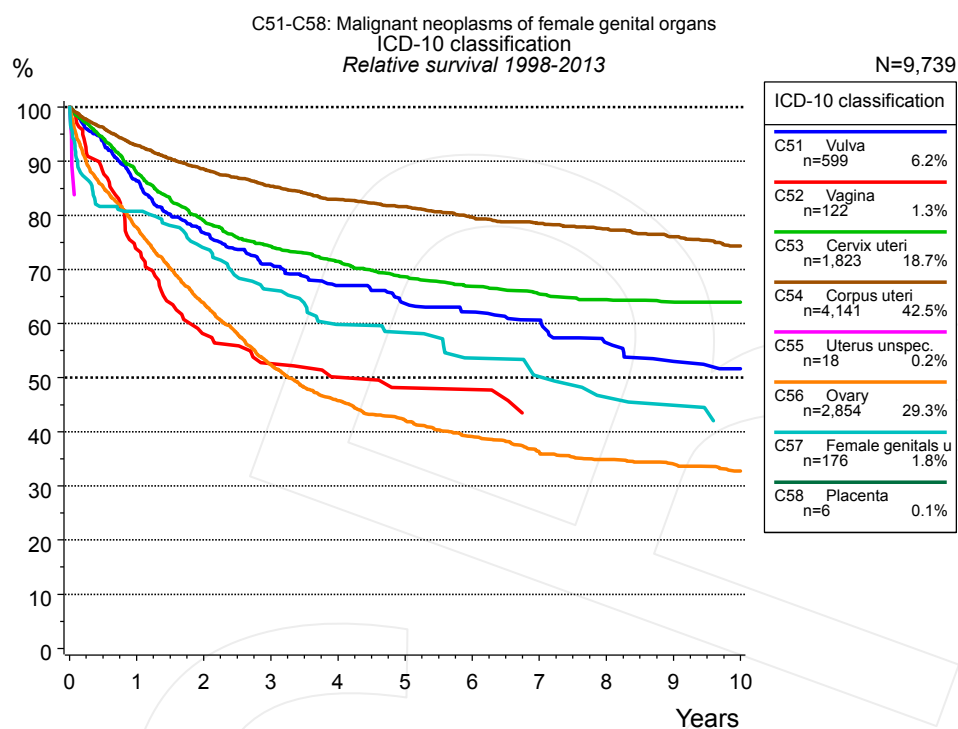
rel. %

0

100.0

100.0

**Table 4b.** Observed (obs.) and relative (rel.) survival of patients with fem. genitale cancer by ICD-10 classification for period 1988-2013 (N=14,347).



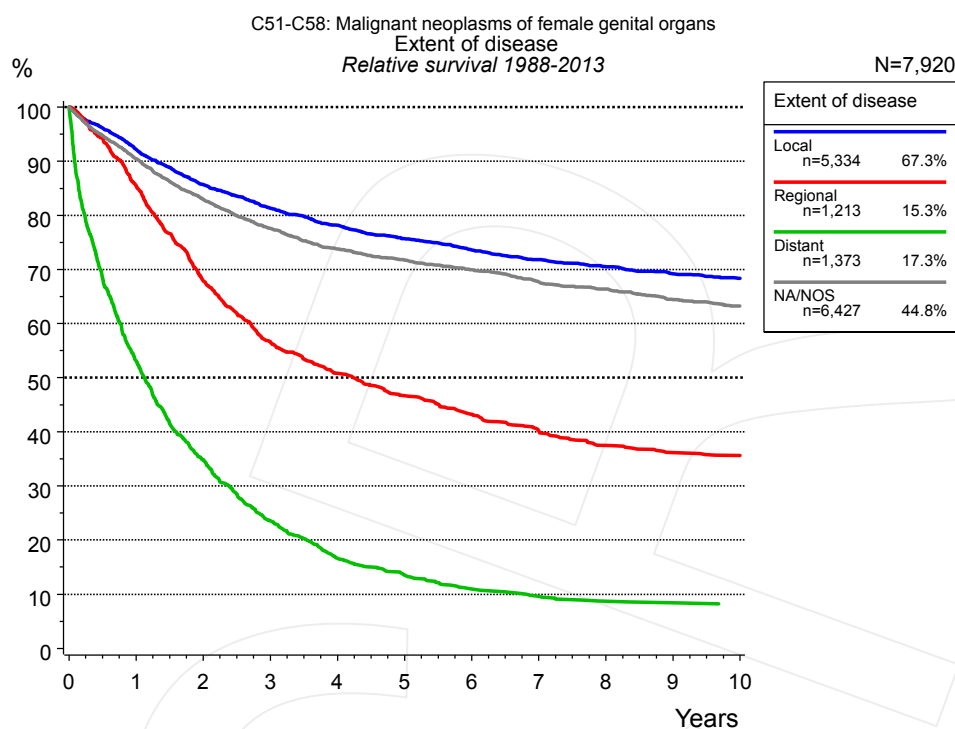
**Figure 4c.** Relative survival of patients with fem. genitale cancer by ICD-10 classification. Included in the evaluation are 9,739 cases diagnosed between 1998 and 2013. Subgroups with sample size <15 are dropped from the chart.

ICD-10 classification									
Years	C51 Vulva n=599		C52 Vagina n=122		C53 Cervix uteri n=1,823		C54 Corpus uteri n=4,141		C55 Uterus unspec. n=18
	obs. %	rel. %	obs. %	rel. %	obs. %	rel. %	obs. %	rel. %	obs. %
0	100.0	100.0	100.0	100.0	100.0	100.0	100.0	100.0	100.0
1	82.6	86.4	71.1	73.8	86.8	87.8	90.7	92.9	100.0
2	70.8	76.8	54.2	58.1	77.4	79.0	84.6	88.6	
3	63.3	71.0	48.0	52.6	72.3	74.3	79.7	85.4	
4	58.0	67.1	44.3	50.1	69.1	71.5	75.8	82.9	
5	53.7	63.7	41.5	48.1	65.9	68.6	72.9	81.6	
6	50.9	62.1	41.5	47.8	63.8	66.9	69.6	79.7	
7	48.4	60.7	35.7	43.3	62.0	65.4	67.1	78.5	
8	43.4	56.4	35.7	42.6	60.8	64.4	64.6	77.5	
9	39.6	53.0			59.9	64.0	62.0	76.1	
10	37.9	51.6			59.7	63.9	59.1	74.3	

ICD-10 classification cont'd		
C58 Placenta n=6		
Years	obs. %	rel. %
0	100.0	100.0

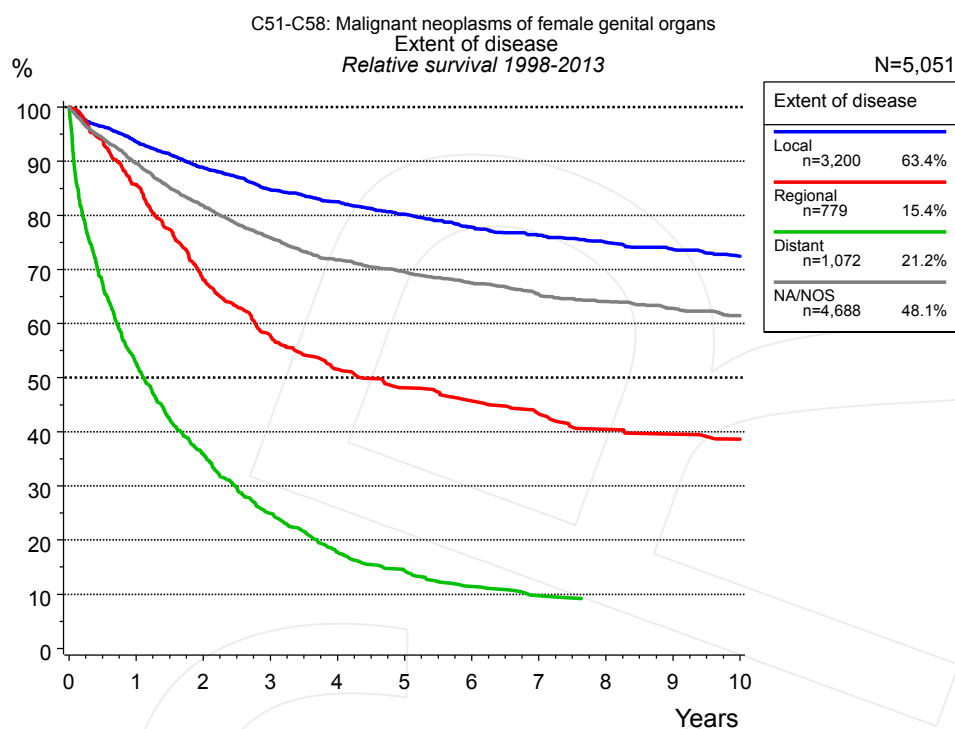
**Table 4d.** Observed (obs.) and relative (rel.) survival of patients with fem. genitale cancer by ICD-10 classification for period 1998-2013 (N=9,739).



**Figure 4e.** Relative survival of patients with fem. genitale cancer by extent of disease. For 13,365 of 14,347 cases diagnosed between 1988 and 2013 valid data could be obtained for this item. For a total of 7,920 cases an evaluable classification was established. The grey line represents the subgroup of 6,427 patients with missing values regarding extent of disease (44.8% of 14,347 patients, the percent values of all other categories are related to n=7,920).

Years	Extent of disease							
	Local n=5,334		Regional n=1,213		Distant n=1,373		NA/NOS n=6,427	
	obs. %	rel. %	obs. %	rel. %	obs. %	rel. %	obs. %	rel. %
0	100.0	100.0	100.0	100.0	100.0	100.0	100.0	100.0
1	90.5	92.2	84.3	85.5	51.8	53.1	88.1	90.5
2	82.7	85.7	66.1	67.9	33.4	34.8	78.9	83.0
3	77.2	81.3	54.6	56.6	22.3	23.6	72.1	77.6
4	73.0	78.1	48.4	50.8	15.5	16.6	67.1	73.8
5	69.5	75.7	43.9	46.7	12.4	13.5	63.7	71.7
6	66.5	73.6	40.3	43.3	10.0	11.0	60.8	69.9
7	63.8	71.8	37.0	40.1	8.6	9.6	57.6	67.7
8	61.6	70.5	34.2	37.5	7.7	8.7	55.2	66.3
9	59.3	69.2	32.6	36.2	7.5	8.4	52.3	64.4
10	57.6	68.4	31.8	35.6	7.0	8.2	50.2	63.2

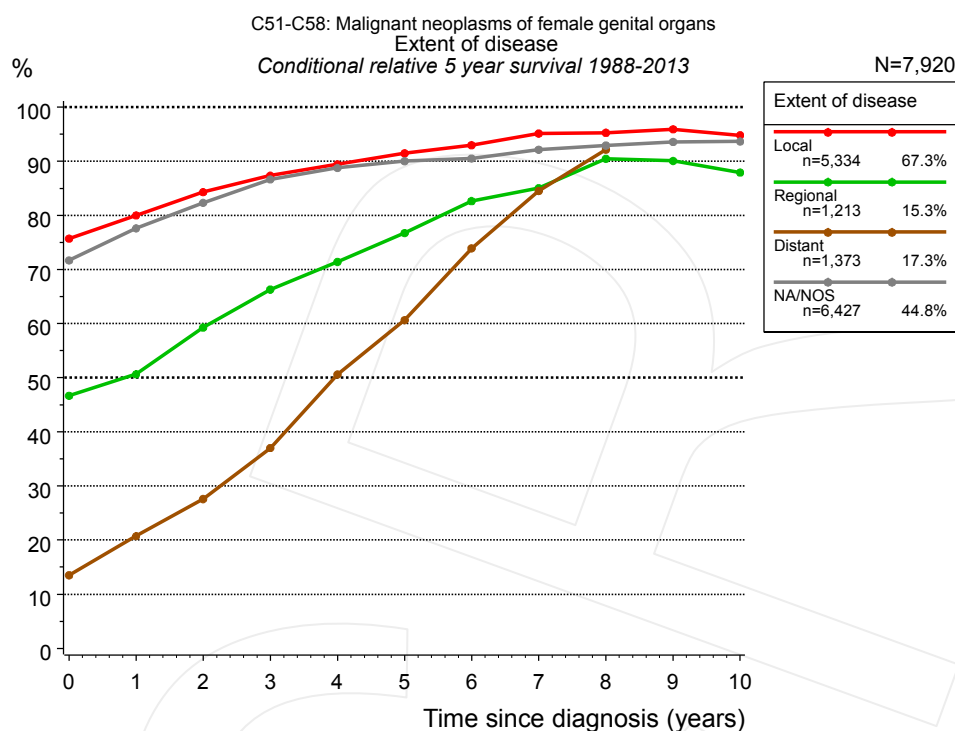
**Table 4f.** Observed (obs.) and relative (rel.) survival of patients with fem. genitale cancer by extent of disease for period 1988-2013 (N=7,920).



**Figure 4g.** Relative survival of patients with fem. genitale cancer by extent of disease. For 9,114 of 9,739 cases diagnosed between 1998 and 2013 valid data could be obtained for this item. For a total of 5,051 cases an evaluable classification was established. The grey line represents the subgroup of 4,688 patients with missing values regarding extent of disease (48.1% of 9,739 patients, the percent values of all other categories are related to n=5,051).

Years	Extent of disease							
	Local n=3,200		Regional n=779		Distant n=1,072		NA/NOS n=4,688	
	obs. %	rel. %	obs. %	rel. %	obs. %	rel. %	obs. %	rel. %
0	100.0	100.0	100.0	100.0	100.0	100.0	100.0	100.0
1	91.9	93.6	84.5	85.7	51.4	52.7	87.2	89.6
2	86.0	88.9	66.1	68.1	34.5	35.9	77.8	81.7
3	80.7	84.7	55.6	57.8	23.6	25.0	70.7	75.9
4	77.4	82.5	49.1	51.6	16.6	17.8	65.5	71.7
5	74.1	80.2	45.2	48.1	13.2	14.3	62.2	69.5
6	70.8	77.8	42.7	45.7	10.4	11.4	59.2	67.5
7	68.3	76.4	40.1	43.3	8.7	9.7	56.3	65.4
8	66.1	75.1	37.1	40.4	8.1	9.1	54.0	64.1
9	63.8	73.8	36.0	39.6	8.1	8.8	51.8	62.8
10	61.7	72.5	34.4	38.6			49.8	61.5

**Table 4h.** Observed (obs.) and relative (rel.) survival of patients with fem. genitale cancer by extent of disease for period 1998-2013 (N=5,051).

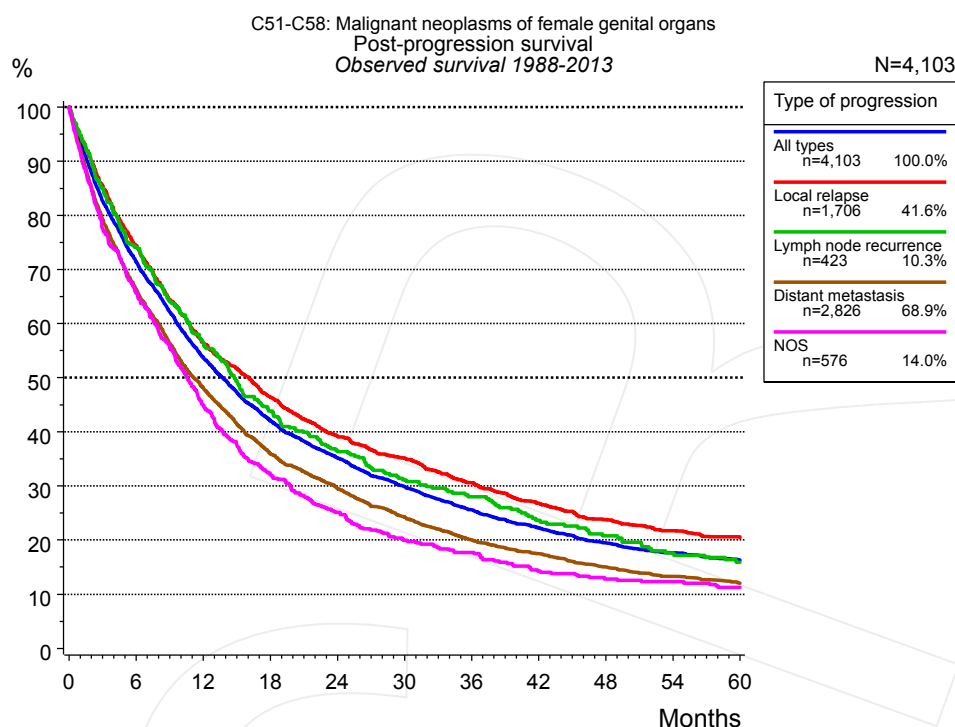


**Figure 4i.** Conditional relative 5-year survival of patients with fem. genitale cancer by extent of disease. For 13,365 of 14,347 cases diagnosed between 1988 and 2013 valid data could be obtained for this item. For a total of 7,920 cases an evaluable classification was established. The grey line represents the subgroup of 6,427 patients with missing values regarding extent of disease (44.8% of 14,347 patients, the percent values of all other categories are related to n=7,920).

Years	Extent of disease							
	Local		Regional		Distant		NA/NOS	
	n	Cond. surv. % 5 yrs	n	Cond. surv. % 5 yrs	n	Cond. surv. % 5 yrs	n	Cond. surv. % 5 yrs
0	5,334	75.7	1,213	46.7	1,373	13.5	6,427	71.7
1	4,591	80.0	967	50.7	665	20.8	5,426	77.6
2	3,894	84.3	689	59.3	385	27.6	4,573	82.3
3	3,367	87.4	509	66.3	225	37.0	3,885	86.6
4	2,928	89.4	407	71.4	138	50.6	3,345	88.8
5	2,521	91.5	338	76.7	98	60.6	2,909	90.0
6	2,200	93.0	282	82.7	68	73.9	2,529	90.5
7	1,965	95.1	239	85.0	51	84.5	2,204	92.1
8	1,756	95.3	203	90.4	41	92.1	1,903	92.9
9	1,581	95.9	178	90.1			1,611	93.6
10	1,423	94.8	160	87.9			1,386	93.6

**Table 4j.** Conditional relative 5-year survival of patients with fem. genitale cancer by extent of disease for period 1988-2013 (N=7,920).

Conditional relative survival rates refer to the relative survival probability, in this case for 5 years after cancer diagnosis, compared to the age- and sex-matched population (=100%) under the condition of being alive for a certain time period (x-axis in Figure 4g). The results illustrate to what extent the cancer induced mortality of particular subgroups declines in the subsequent years after detection of the malignancy. For instance, according to the presented survival statistics, patients in the subgroup extent of disease="Local", who are alive at least 3 years after cancer diagnosis, the conditional relative 5-year survival rate is 87.4% (n=3,367).



**Figure 5a.** Observed post-progression survival of 4,103 patients with fem. genitale cancer diagnosed between 1988 and 2013 (incl. M1). These 4,103 patients with documented progression events during their course of disease represent 28.6% of the totally 14,347 evaluated cases. Patients with cancer relapse documented via death certificates only were excluded (n=1,146, 8.0%). Multiple progression types on different sites are included in the evaluation even when not occurring synchronously. The NOS (not otherwise specified) class is included under the condition, that it is the one and only progression type during the course of disease.

Medical record documentation often lacks the linguistic severity to distinguish between local relapse, regional lymph node metastasis and distant spread in solid cancers. Frequently, the statement “not specified” is the only information in registries regarding relapse of the disease. The category “All types” denotes all cases who suffered from at least one relapse during the course of disease (incl. primary M1-status). Although, the real number of relapsed patients is likely to be much higher. The accumulated percentage of patients with local relapse or distant metastasis exceeds the 100% value because patients are potentially considered in more than one subgroup.

Months	Type of progression				
	All types n=4,103	Local relapse n=1,706	Lymph node recurrence n=423	Distant metastasis n=2,826	NOS n=576
	%	%	%	%	%
0	100.0	100.0	100.0	100.0	100.0
12	53.7	56.5	56.4	48.1	45.0
24	35.2	39.3	36.3	29.6	25.1
36	25.6	30.6	28.0	20.1	17.7
48	19.5	23.8	20.8	15.0	12.8
60	16.3	20.5	15.9	12.0	11.3

**Table 5b.** Observed post-progression survival of patients with fem. genitale cancer for period 1988-2013 (N=4,103).

## Shortcuts

MCR	Munich Cancer Registry, Germany (Tumorregister München)
NCI	National Cancer Institute, USA
SEER	Surveillance, Epidemiology, and End Results, USA
UICC	Union for International Cancer Control, Geneva
DCO	Death certificate only. The death certificate provides the only notification to the registry.
NA	Not available
NOS	Not otherwise specified
OS	Observed/overall survival (Kaplan-Meier estimate)
RS	Relative survival, compared to the general population, ratio of observed to expected survival (Ederer II method), reflecting excess mortality among cancer patients
AS	Assembled survival chart (observed, expected, relative)
PPS	Post-progression survival, survival since first relapse (Kaplan-Meier estimate)
progression	Date of entry: Date of first locoregional recurrence, distant metastasis, unspecified
	Event: Death of all causes
CS	Conditional survival, survival probability under the condition of surviving a given period of time

## Recommended Citation

Munich Cancer Registry. Survival C51-C58: Fem. genitale cancer [Internet]. 2015 [updated 2015 May 13; cited 2015 Jul 1]. Available from: [http://www.tumorregister-muenchen.de/en/facts/surv/surv\\_C5158E.pdf](http://www.tumorregister-muenchen.de/en/facts/surv/surv_C5158E.pdf)

## Copyright

The content of the public web site provided by the Munich Cancer Registry is available worldwide and free of charge. All documents are free to download, utilize, copy, print-out and distribute, providing that the MCR is referenced.

## Disclaimer

The Munich Cancer Registry reserves the right to not be responsible for the topicality, correctness, completeness or quality of the information provided. Liability claims regarding damage caused by the use of any information provided, including any kind of information which is incomplete or incorrect, will therefore be rejected.

### Index of figures and tables

Fig./Tbl.		Page
1a	Relative survival by period of diagnosis (chart)	2
1b	Survival by period of diagnosis (table)	3
2a	Survival of total cohort (chart)	3
2b	Survival of total cohort (table)	4
3a	Relative survival by age category (chart)	4
3b	Observed survival by age category (chart)	5
3c	Survival by age category (table)	5
4a	Relative survival by ICD-10 classification 1988+ (chart)	6
4b	Survival by ICD-10 classification 1988+ (table)	6
4c	Relative survival by ICD-10 classification 1998+ (chart)	7
4d	Survival by ICD-10 classification 1998+ (table)	7
4e	Relative survival by extent of disease 1988+ (chart)	8
4f	Survival by extent of disease 1988+ (table)	8
4g	Relative survival by extent of disease 1998+ (chart)	9
4h	Survival by extent of disease 1998+ (table)	9
4i	Conditional survival by extent of disease (chart)	10
4j	Conditional survival by extent of disease (table)	10
5a	Observed post-progression survival (chart)	11
5b	Observed post-progression survival (table)	11