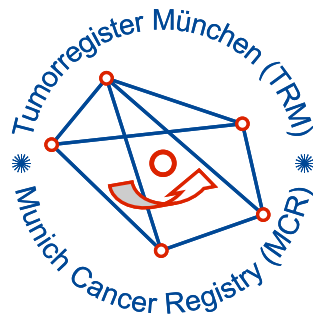


# Munich Cancer Registry



- ▶ Baseline statistics
- ▶ Selection Matrix
- ▶ Homepage
- ▶ *Deutsch*

Munich Cancer Registry at Munich Cancer Center  
Marchioninstr. 15  
Munich, 81377  
Germany

<http://www.tumorregister-muenchen.de/en>

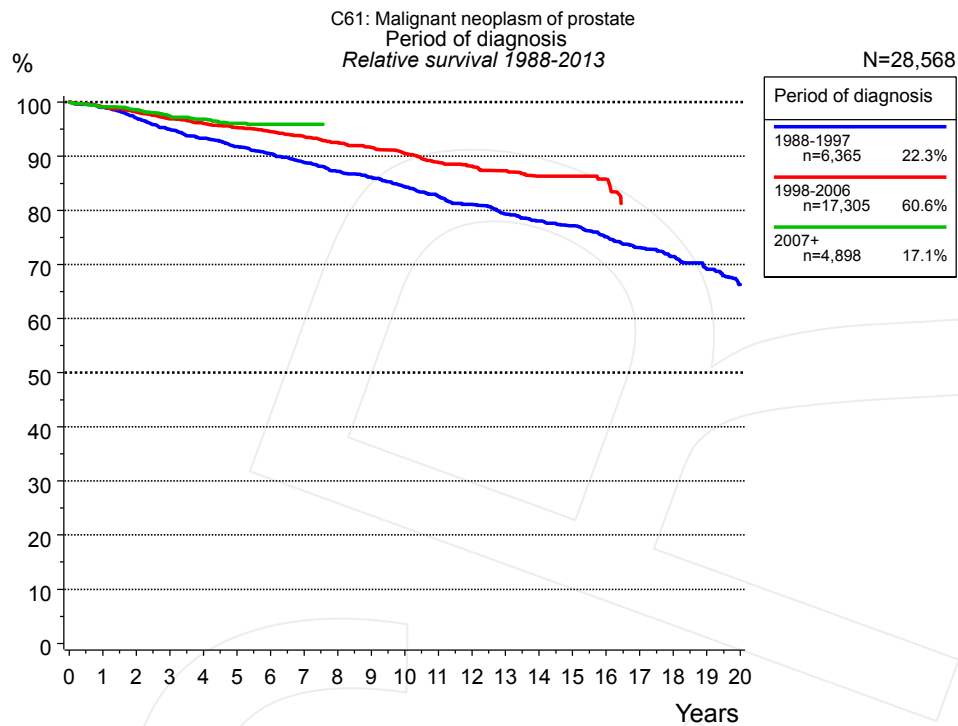
## Cancer statistics: Survival

### C61: Prostate cancer

Year of diagnosis	1988-2013
Patients	50,967
Diseases	50,968
Cases evaluated	28,568
Creation date	05/13/2015
Export date	12/30/2014
Population (males)	2.28 m



[http://www.tumorregister-muenchen.de/en/facts/surv/surv\\_C61\\_\\_E.pdf](http://www.tumorregister-muenchen.de/en/facts/surv/surv_C61__E.pdf)

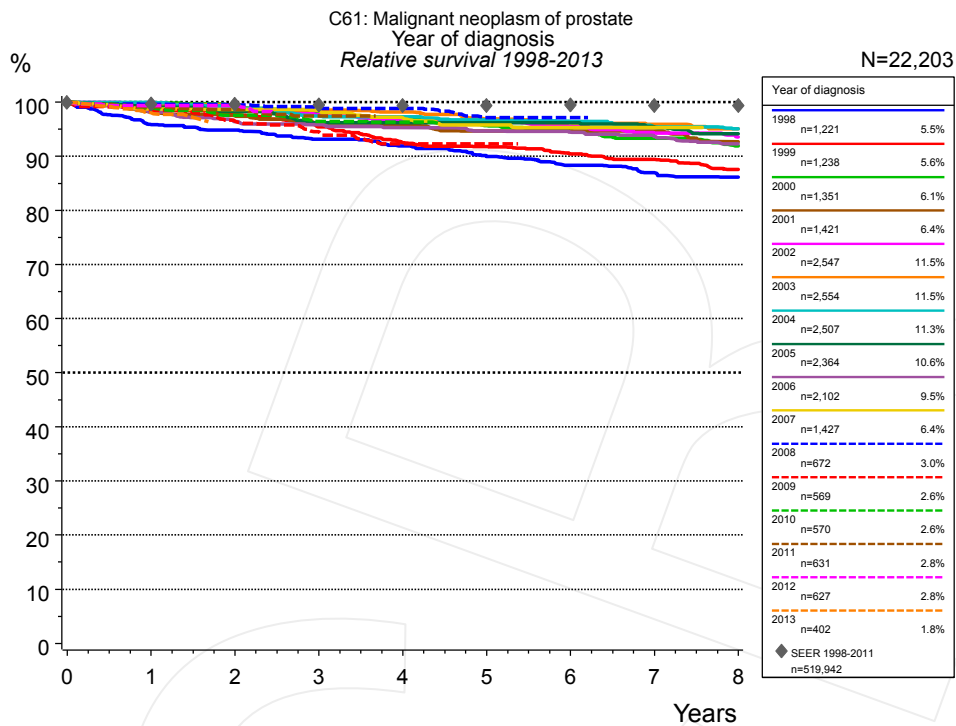


**Figure 1a.** Relative survival of patients with prostate cancer by period of diagnosis. Included in the evaluation are 28,568 cases diagnosed between 1988 and 2013.

The presented survival curves are derived from clinical records with valid follow-up informations, which means that death certificate cases (DCO) cases are omitted from the analysis. With this one restriction, the MCR has provided population-based statistics since 1988, collecting data on all cancer cases in the region of southern Bavaria. Historical data of previous time periods can be heavily selected, therefore, univariate survival comparisons of the presented time periods must be carefully considered. Nonetheless, all calculable survival curves are depicted to facilitate the comparison of long time follow-up analyses of relative survival between particular cancers.

Years	Period of diagnosis					
	1988-1997 n=6,365		1998-2006 n=17,305		2007+ n=4,898	
	obs. %	rel. %	obs. %	rel. %	obs. %	rel. %
0	100.0	100.0	100.0	100.0	100.0	100.0
1	94.3	99.0	95.7	99.1	96.2	99.1
2	88.0	97.1	91.5	98.2	92.8	98.6
3	82.1	95.0	87.2	96.9	88.9	97.4
4	76.8	93.3	83.4	96.1	85.6	96.8
5	71.8	91.8	79.7	95.3	82.1	96.1
6	67.4	90.5	76.1	94.5	79.1	95.9
7	63.0	88.8	72.5	93.6	77.4	95.9
8	58.9	87.2	68.9	92.5		
9	55.2	86.1	65.4	91.6		
10	51.4	84.4	61.9	90.5		
11	47.8	82.7	58.1	88.9		
12	44.4	81.1	55.0	88.2		
13	41.0	79.3	51.8	87.3		
14	38.1	78.0	48.6	86.3		
15	35.4	77.1	46.6	86.3		
16	32.3	75.1	43.2	85.8		
17	29.4	73.1				
18	27.0	71.5				
19	24.2	69.2				
20	21.5	66.3				

**Table 1b.** Observed (obs.) and relative (rel.) survival of patients with prostate cancer by period of diagnosis for period 1988-2013 (N=28,568).



**Figure 1c.** Relative survival of patients with prostate cancer by year of diagnosis. Included in the evaluation are 22,203 cases diagnosed between 1998 and 2013.

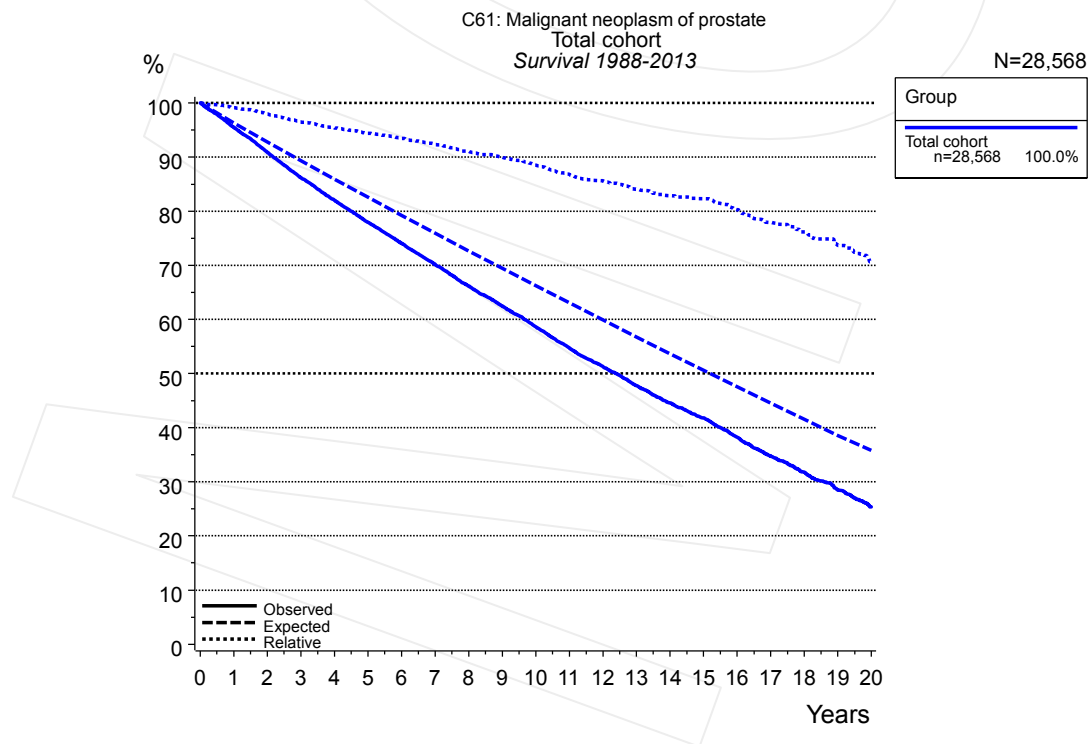
The survival results of the SEER program (Surveillance, Epidemiology, and End Results) of the American National Cancer Institute (NCI) are summarized as the period of diagnosis from 1998 to 2011, and are represented by gray diamonds in order to facilitate comparisons between MCR and SEER.

Years	Year of diagnosis													
	1998 n=1,221		1999 n=1,238		2000 n=1,351		2001 n=1,421		2002 n=2,547		2003 n=2,554		2004 n=2,507	
	obs. %	rel. %	obs. %	rel. %	obs. %	rel. %	obs. %	rel. %	obs. %	rel. %	obs. %	rel. %	obs. %	rel. %
0	100.0	100.0	100.0	100.0	100.0	100.0	100.0	100.0	100.0	100.0	100.0	100.0	100.0	100.0
1	92.0	95.9	95.2	99.0	96.4	99.8	94.7	98.2	95.9	99.5	96.6	99.5	96.9	99.9
2	87.4	94.8	90.3	97.6	92.1	99.2	90.6	97.5	91.8	98.7	92.9	99.3	93.0	99.1
3	82.4	93.1	84.9	95.4	87.7	98.1	86.3	96.2	87.6	97.7	89.3	98.5	88.5	97.4
4	77.9	91.9	79.1	92.5	83.5	97.0	82.7	95.7	83.5	96.5	85.8	98.2	85.9	97.3
5	73.2	90.0	75.5	91.8	79.0	95.7	79.0	94.7	80.5	96.3	81.7	96.9	82.2	96.7
6	69.1	88.3	71.5	90.4	75.1	94.6	76.2	94.7	76.8	95.5	78.4	96.2	79.1	96.4
7	65.2	87.0	68.0	89.4	71.6	93.3	73.1	94.7	72.9	94.3	75.3	95.9	75.5	95.4
8	61.9	86.1	64.2	87.5	67.3	91.9	68.4	92.7	69.5	93.5	71.9	95.1	72.5	95.1

cont'd Years	Year of diagnosis													
	2005 n=2,364		2006 n=2,102		2007 n=1,427		2008 n=672		2009 n=569		2010 n=570		2011 n=631	
	obs. %	rel. %	obs. %	rel. %	obs. %	rel. %	obs. %	rel. %	obs. %	rel. %	obs. %	rel. %	obs. %	rel. %
0	100.0	100.0	100.0	100.0	100.0	100.0	100.0	100.0	100.0	100.0	100.0	100.0	100.0	100.0
1	96.2	99.3	95.1	98.1	95.5	98.7	97.0	99.6	95.8	98.5	96.1	98.9	96.7	99.1
2	92.1	98.3	90.4	96.4	92.9	98.6	94.0	99.5	91.0	96.5	92.1	97.6	93.7	98.6
3	87.4	96.2	87.3	95.9	89.3	98.4	90.6	98.8	86.6	94.6	88.1	96.4	89.7	97.4
4	84.7	96.2	84.1	95.3	85.4	97.1	88.1	98.8	82.1	92.3	85.2	96.3		
5	82.4	96.2	80.8	94.6	82.0	95.8	83.5	97.1	79.8	92.3				
6	79.2	96.2	77.6	94.4	78.5	95.3	80.9	97.1						
7	75.3	95.4	74.1	93.7	76.7	95.3								
8	72.0	94.1	70.2	92.3										

Year of diagnosis				
<i>cont'd</i>	2012 n=627		2013 n=402	
Years	obs. %	rel. %	obs. %	rel. %
0	100.0	100.0	100.0	100.0
1	96.7	99.3	95.4	98.0
2	93.5	99.3		

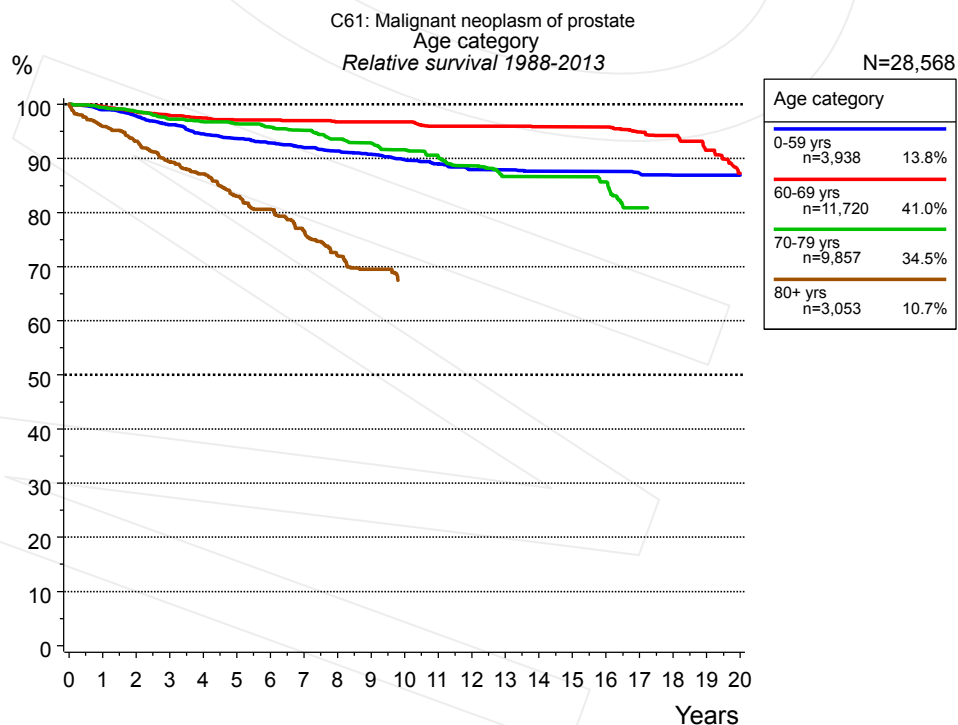
**Table 1d.** Observed (obs.) and relative (rel.) survival of patients with prostate cancer by year of diagnosis for period 1998-2013 (N=22,203).



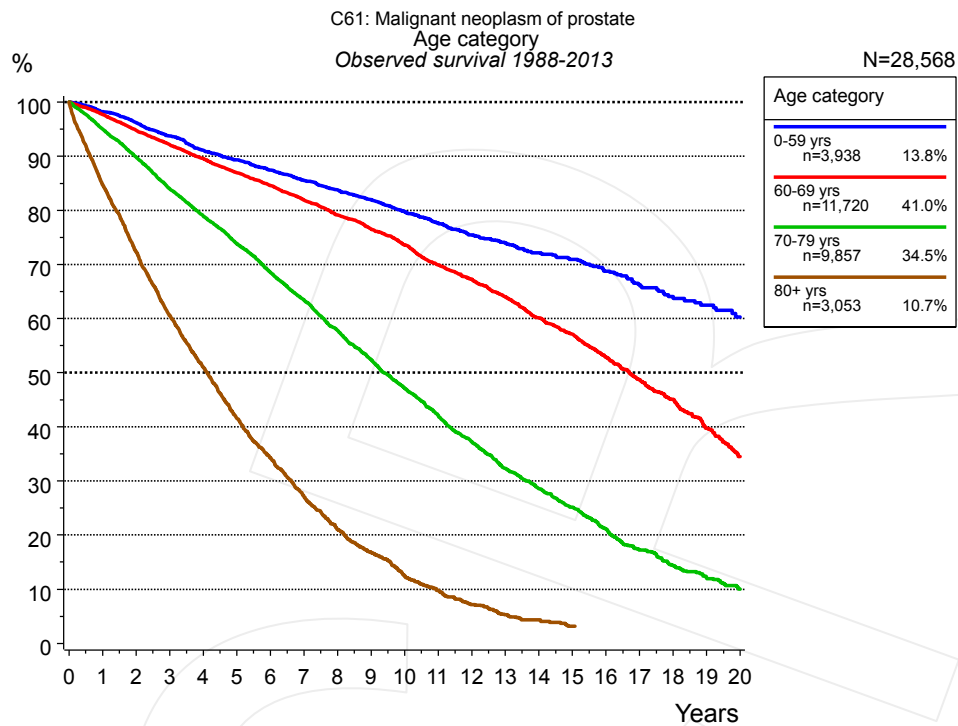
**Figure 2a.** Observed, expected and relative survival of the total cohort with prostate cancer. Included in the evaluation are 28,568 cases diagnosed between 1988 and 2013.

Years	Group	
	obs. %	rel. %
	Total cohort n=28,568	
0	100.0	100.0
1	95.5	99.1
2	90.9	98.0
3	86.2	96.5
4	82.0	95.4
5	77.9	94.4
6	74.0	93.4
7	70.1	92.4
8	66.2	91.0
9	62.5	90.0
10	58.6	88.5
11	54.8	86.8
12	51.3	85.6
13	47.7	84.0
14	44.5	82.8
15	41.8	82.3
16	38.2	80.3
17	34.7	77.9
18	31.8	76.1
19	28.5	73.8
20	25.4	70.6

**Table 2b.** Observed (obs.) and relative (rel.) survival of the total cohort with prostate cancer for period 1988-2013 (N=28,568).



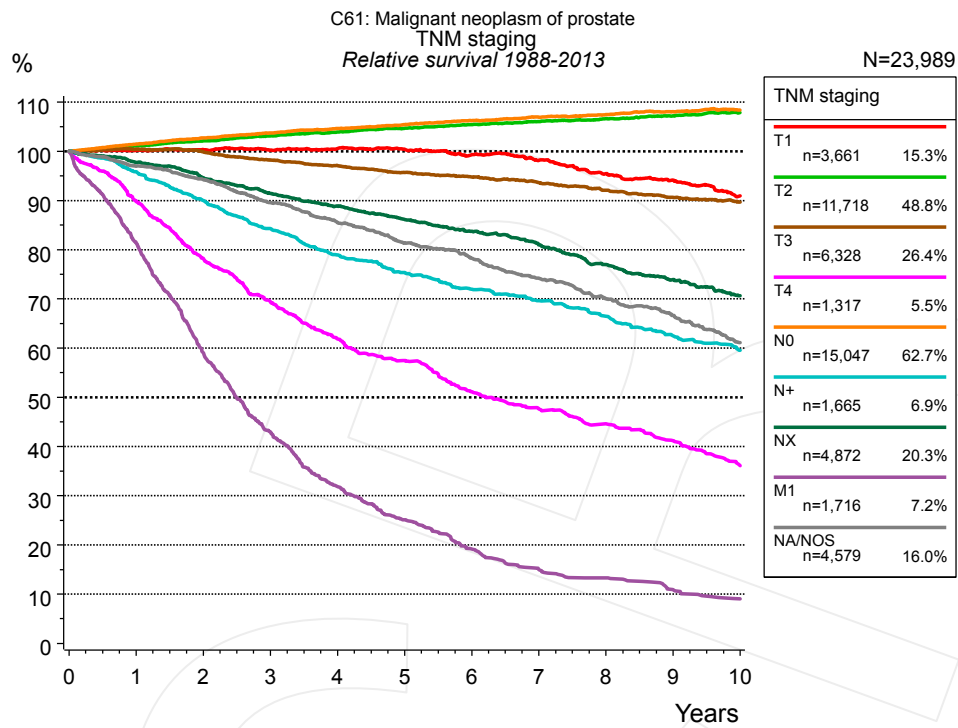
**Figure 3a.** Relative survival of patients with prostate cancer by age category. Included in the evaluation are 28,568 cases diagnosed between 1988 and 2013.



**Figure 3b.** Observed survival of patients with prostate cancer by age category. Included in the evaluation are 28,568 cases diagnosed between 1988 and 2013.

Years	Age category							
	0-59 yrs n=3,938		60-69 yrs n=11,720		70-79 yrs n=9,857		80+ yrs n=3,053	
	obs. %	rel. %	obs. %	rel. %	obs. %	rel. %	obs. %	rel. %
0	100.0	100.0	100.0	100.0	100.0	100.0	100.0	100.0
1	98.2	99.0	97.7	99.6	95.0	99.4	84.7	95.9
2	96.2	97.9	94.8	98.6	89.8	98.7	72.3	93.2
3	93.7	96.2	92.1	98.0	84.0	97.3	60.6	89.4
4	91.1	94.5	89.5	97.5	78.9	96.8	51.0	87.1
5	89.3	93.7	87.0	97.1	73.8	96.4	41.6	83.0
6	87.4	92.9	84.5	97.1	68.6	95.8	34.2	80.6
7	85.5	92.1	81.9	97.0	63.4	95.2	27.1	76.6
8	83.8	91.4	79.2	96.8	57.8	93.6	21.1	72.1
9	82.0	90.8	76.5	96.8	52.4	92.8	16.8	69.6
10	79.7	89.8	73.6	96.8	47.2	91.6		
11	77.7	89.0	69.9	95.9	42.1	90.5		
12	75.4	88.0	67.3	95.9	37.2	88.6		
13	74.0	87.9	64.0	95.9	32.3	86.6		
14	72.2	87.6	60.1	95.9	28.6	86.6		
15	70.9	87.6	57.1	95.9	25.2	86.6		
16	68.8	87.6	52.9	95.9	21.2	85.7		
17	66.3	87.3	48.7	94.9	17.3	80.8		
18	64.1	86.9	45.1	94.3				
19	62.5	86.9	39.7	91.6				
20	60.3	86.9	34.5	87.3				

**Table 3c.** Observed (obs.) and relative (rel.) survival of patients with prostate cancer by age category for period 1988-2013 (N=28,568).

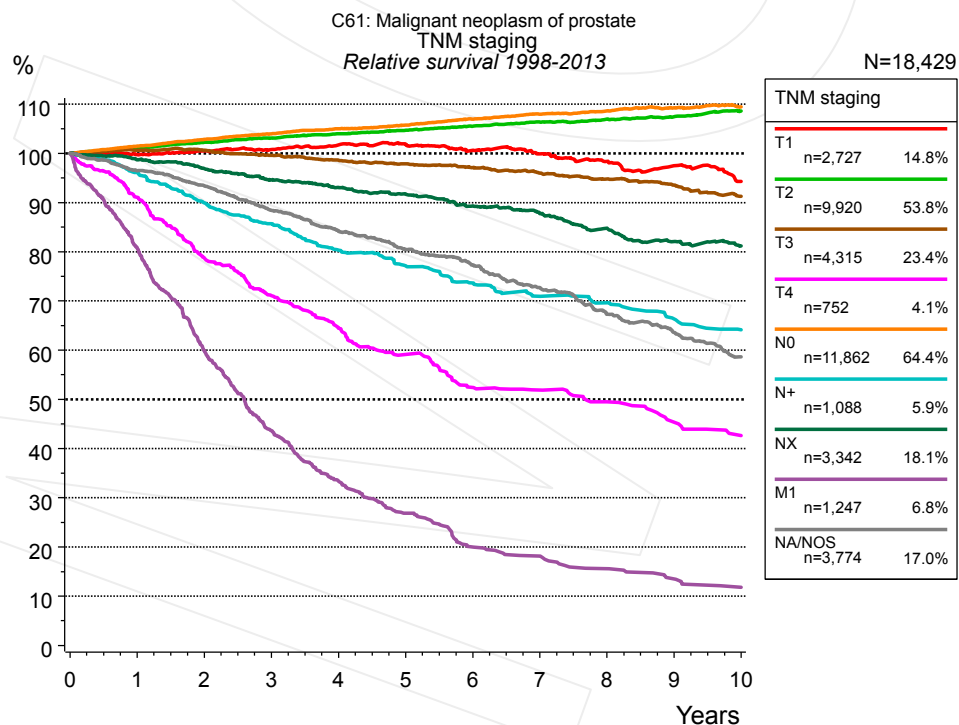


**Figure 4a.** Relative survival of patients with prostate cancer by TNM staging. For 24,066 of 28,568 cases diagnosed between 1988 and 2013 valid data could be obtained for this item. For a total of 23,989 cases an evaluable classification was established. The accumulated percentage exceeds the 100% value because patients are potentially considered in more than one subgroup. The grey line represents the subgroup of 4,579 patients with missing values regarding TNM staging (16.0% of 28,568 patients, the percent values of all other categories are related to n=23,989).

Years	TNM staging													
	T1		T2		T3		T4		N0		N+		NX	
	n=3,661	n=11,718	n=6,328	n=1,317	n=15,047	n=1,665	n=4,872							
0	100.0	100.0	100.0	100.0	100.0	100.0	100.0	100.0	100.0	100.0	100.0	100.0	100.0	100.0
1	95.5	100.2	98.4	101.1	97.3	100.4	85.8	89.9	98.9	101.4	93.4	95.8	92.6	97.7
2	91.1	100.3	96.6	102.1	93.7	99.9	71.4	78.2	97.5	102.7	85.2	90.0	85.0	94.6
3	86.6	100.2	94.8	103.1	89.2	98.2	60.6	69.4	95.8	103.7	77.5	84.3	77.8	91.5
4	82.5	100.6	92.6	103.9	85.2	97.1	51.6	61.8	93.8	104.6	70.5	78.9	71.5	88.8
5	78.1	100.4	90.3	104.7	80.9	95.7	45.8	57.5	91.6	105.4	65.3	75.4	65.3	86.1
6	73.1	99.3	87.9	105.4	77.2	94.8	39.0	51.1	89.3	106.2	60.3	72.0	59.8	83.7
7	68.2	98.2	85.4	106.0	73.4	93.6	34.7	47.6	86.8	106.9	56.4	69.6	54.4	81.0
8	62.5	95.4	82.7	106.6	69.3	92.1	31.0	44.6	84.1	107.5	51.8	66.4	48.7	77.0
9	58.0	94.1	80.0	107.2	65.3	90.6	27.4	41.2	81.3	108.1	46.9	62.5	43.8	74.0
10	52.6	90.9	77.1	107.8	61.9	89.7	22.8	36.1	78.2	108.4	42.9	59.6	39.2	70.7

cont'd Years	TNM staging			
	M1 n=1,716		NA/NOS n=4,579	
	obs. %	rel. %	obs. %	rel. %
0	100.0	100.0	100.0	100.0
1	77.8	81.5	91.5	97.0
2	53.9	59.0	83.9	94.2
3	37.6	43.0	75.2	89.6
4	26.7	31.8	67.6	85.5
5	20.1	25.1	60.4	81.3
6	14.7	19.2	54.6	78.2
7	10.9	15.0	48.6	74.2
8	9.4	13.3	42.9	70.0
9	7.2	10.9	38.2	66.6
10	5.8	9.0	32.7	61.1

**Table 4b.** Observed (obs.) and relative (rel.) survival of patients with prostate cancer by TNM staging for period 1988-2013 (N=46,324).



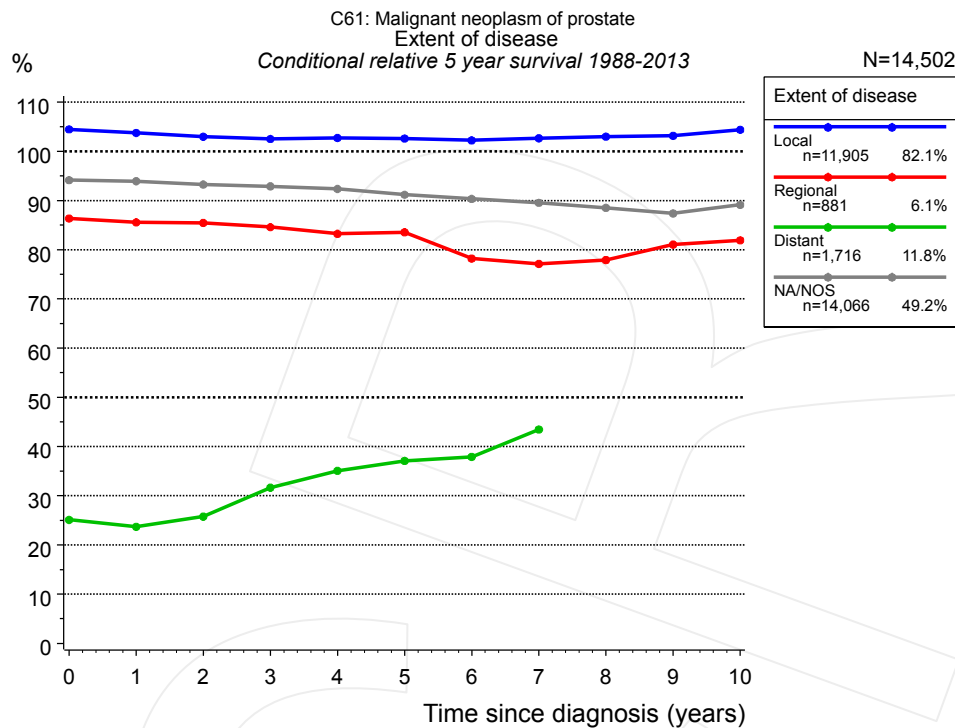
**Figure 4c.** Relative survival of patients with prostate cancer by TNM staging. For 18,495 of 22,203 cases diagnosed between 1998 and 2013 valid data could be obtained for this item. For a total of 18,429 cases an evaluable classification was established. The accumulated percentage exceeds the 100% value because patients are potentially considered in more than one subgroup. The grey line represents the subgroup of 3,774 patients with missing values regarding TNM staging (17.0% of 22,203 patients, the percent values of all other categories are related to n=18,429).



TNM staging															
Years	T1 n=2,727		T2 n=9,920		T3 n=4,315		T4 n=752		N0 n=11,862		N+ n=1,088		NX n=3,342		
	obs. %	rel. %	obs. %	rel. %	obs. %	rel. %	obs. %	rel. %	obs. %	rel. %	obs. %	rel. %	obs. %	rel. %	
0	100.0	100.0	100.0	100.0	100.0	100.0	100.0	100.0	100.0	100.0	100.0	100.0	100.0	100.0	
1	95.4	99.7	98.6	101.1	98.0	100.6	87.9	91.1	99.2	101.4	93.9	96.1	94.4	98.7	
2	92.0	100.4	97.1	102.2	95.4	100.6	73.3	78.7	98.1	102.8	85.7	89.9	88.7	96.9	
3	88.2	100.7	95.3	103.1	91.7	99.6	63.9	71.0	96.8	103.9	79.7	85.7	82.7	94.6	
4	85.0	101.7	93.4	104.0	88.1	98.6	55.8	64.4	95.1	105.0	72.8	80.3	77.6	93.1	
5	81.1	101.9	91.2	104.7	84.8	97.9	49.5	59.1	93.1	105.7	68.1	77.1	72.8	91.7	
6	76.2	100.6	89.0	105.5	81.5	97.1	42.5	52.4	91.4	106.9	63.2	73.6	67.4	89.3	
7	71.7	99.9	86.8	106.4	77.8	95.9	40.6	51.9	89.4	107.9	59.1	70.9	62.9	87.8	
8	66.8	98.4	84.4	107.0	74.2	94.8	37.1	49.5	87.0	108.6	56.2	69.6	57.7	84.8	
9	62.4	97.5	81.7	107.4	70.5	93.6	32.8	45.3	84.4	109.2	51.6	66.3	53.0	82.1	
10	57.0	94.3	79.4	108.6	66.1	91.3	29.5	42.6	81.4	109.4	48.2	64.2	49.5	81.2	

TNM staging				
<i>cont'd</i>	M1 n=1,247		NA/NOS n=3,774	
Years	obs. %	rel. %	obs. %	rel. %
0	100.0	100.0	100.0	100.0
1	77.5	80.8	91.2	96.5
2	55.3	59.9	83.4	93.3
3	38.7	43.6	74.6	88.4
4	28.5	33.3	67.0	84.2
5	22.0	26.9	60.3	80.4
6	15.9	20.0	54.5	77.3
7	13.9	18.2	48.2	72.7
8	11.5	15.6	41.8	67.3
9	9.6	13.5	37.0	63.6
10	8.1	11.8	32.0	58.6

**Table 4d.** Observed (obs.) and relative (rel.) survival of patients with prostate cancer by TNM staging for period 1998-2013 (N=35,253).

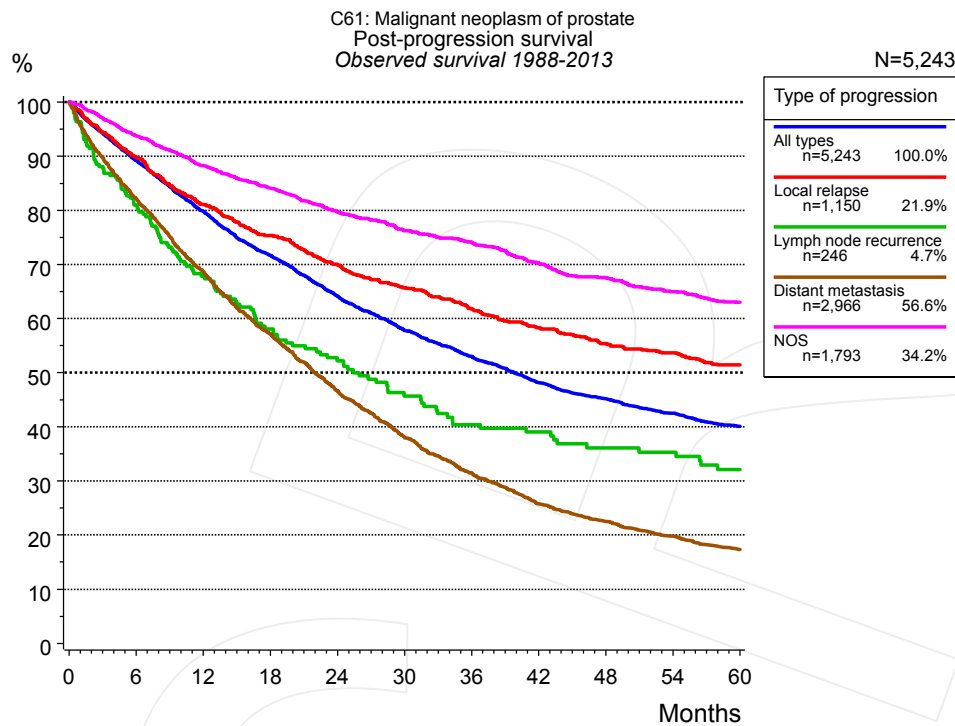


**Figure 4e.** Conditional relative 5-year survival of patients with prostate cancer by extent of disease. For 24,066 of 28,568 cases diagnosed between 1988 and 2013 valid data could be obtained for this item. For a total of 14,502 cases an evaluable classification was established. The grey line represents the subgroup of 14,066 patients with missing values regarding extent of disease (49.2% of 28,568 patients, the percent values of all other categories are related to n=14,502).

Years	Extent of disease							
	Local		Regional		Distant		NA/NOS	
	n	Cond. surv. % 5 yrs	n	Cond. surv. % 5 yrs	n	Cond. surv. % 5 yrs	n	Cond. surv. % 5 yrs
0	11,905	104.5	881	86.4	1,716	25.1	14,066	94.2
1	11,226	103.7	829	85.6	1,259	23.7	12,748	93.9
2	10,300	103.0	752	85.5	799	25.8	11,178	93.2
3	9,178	102.5	639	84.6	497	31.6	9,449	92.9
4	8,019	102.7	546	83.2	315	35.1	7,920	92.4
5	6,867	102.6	461	83.6	210	37.1	6,568	91.2
6	5,902	102.2	403	78.2	129	37.9	5,385	90.3
7	5,225	102.6	363	77.1	85	43.5	4,446	89.5
8	4,587	103.0	310	77.9			3,648	88.5
9	4,058	103.2	266	81.1			2,897	87.4
10	3,484	104.4	230	81.9			2,240	89.1

**Table 4f.** Conditional relative 5-year survival of patients with prostate cancer by extent of disease for period 1988-2013 (N=14,502).

Conditional relative survival rates refer to the relative survival probability, in this case for 5 years after cancer diagnosis, compared to the age- and sex-matched population (=100%) under the condition of being alive for a certain time period (x-axis in Figure 4c). The results illustrate to what extent the cancer induced mortality of particular subgroups declines in the subsequent years after detection of the malignancy. For instance, according to the presented survival statistics, patients in the subgroup extent of disease="Local", who are alive at least 3 years after cancer diagnosis, the conditional relative 5-year survival rate is 102.5% (n=9,178).



**Figure 5a.** Observed post-progression survival of 5,243 patients with prostate cancer diagnosed between 1988 and 2013 (incl. M1). These 5,243 patients with documented progression events during their course of disease represent 18.4% of the totally 28,568 evaluated cases. Patients with cancer relapse documented via death certificates only were excluded (n=936, 3.3%). Multiple progression types on different sites are included in the evaluation even when not occurring synchronously. The NOS (not otherwise specified) class is included under the condition, that it is the one and only progression type during the course of disease.

Medical record documentation often lacks the linguistic severity to distinguish between local relapse, regional lymph node metastasis and distant spread in solid cancers. Frequently, the statement “not specified” is the only information in registries regarding relapse of the disease. The category “All types” denotes all cases who suffered from at least one relapse during the course of disease (incl. primary M1-status). Although, the real number of relapsed patients is likely to be much higher. The accumulated percentage of patients with local relapse or distant metastasis exceeds the 100% value because patients are potentially considered in more than one subgroup.

Months	Type of progression				
	All types n=5,243 %	Local relapse n=1,150 %	Lymph node recurrence n=246 %	Distant metastasis n=2,966 %	NOS n=1,793 %
0	100.0	100.0	100.0	100.0	100.0
12	79.8	81.0	67.8	68.7	88.2
24	64.1	69.9	52.2	46.6	79.7
36	53.0	61.8	40.4	31.4	74.1
48	45.2	55.3	36.1	22.5	67.5
60	40.1	51.4	32.1	17.3	63.0

**Table 5b.** Observed post-progression survival of patients with prostate cancer for period 1988-2013 (N=5,243).

**Shortcuts**

MCR	Munich Cancer Registry, Germany (Tumorregister München)
NCI	National Cancer Institute, USA
SEER	Surveillance, Epidemiology, and End Results, USA
UICC	Union for International Cancer Control, Geneva
DCO	Death certificate only. The death certificate provides the only notification to the registry.
NA	Not available
NOS	Not otherwise specified
OS	Observed/overall survival (Kaplan-Meier estimate)
RS	Relative survival, compared to the general population, ratio of observed to expected survival (Ederer II method), reflecting excess mortality among cancer patients
AS	Assembled survival chart (observed, expected, relative)
PPS	Post-progression survival, survival since first relapse (Kaplan-Meier estimate)
progression	Date of entry: Date of first locoregional recurrence, distant metastasis, unspecified
	Event: Death of all causes
CS	Conditional survival, survival probability under the condition of surviving a given period of time

**Recommended Citation**

Munich Cancer Registry. Survival C61: Prostate cancer [Internet]. 2015 [updated 2015 May 13; cited 2015 Jul 1]. Available from: [http://www.tumorregister-muenchen.de/en/facts/surv/surv\\_C61\\_\\_E.pdf](http://www.tumorregister-muenchen.de/en/facts/surv/surv_C61__E.pdf)

**Copyright**

The content of the public web site provided by the Munich Cancer Registry is available worldwide and free of charge. All documents are free to download, utilize, copy, print-out and distribute, providing that the MCR is referenced.

**Disclaimer**

The Munich Cancer Registry reserves the right to not be responsible for the topicality, correctness, completeness or quality of the information provided. Liability claims regarding damage caused by the use of any information provided, including any kind of information which is incomplete or incorrect, will therefore be rejected.

## Index of figures and tables

Fig./Tbl.		Page
1a	Relative survival by period of diagnosis (chart)	2
1b	Survival by period of diagnosis (table)	2
1c	Relative survival by year of diagnosis (chart)	3
1d	Survival by year of diagnosis (table)	3
2a	Survival of total cohort (chart)	4
2b	Survival of total cohort (table)	5
3a	Relative survival by age category (chart)	5
3b	Observed survival by age category (chart)	6
3c	Survival by age category (table)	6
4a	Relative survival by TNM staging 1988+ (chart)	7
4b	Survival by TNM staging 1988+ (table)	7
4c	Relative survival by TNM staging 1998+ (chart)	8
4d	Survival by TNM staging 1998+ (table)	9
4e	Conditional survival by extent of disease (chart)	10
4f	Conditional survival by extent of disease (table)	10
5a	Observed post-progression survival (chart)	11
5b	Observed post-progression survival (table)	11