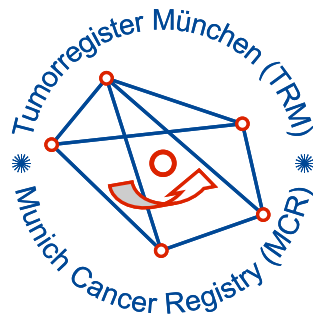


Munich Cancer Registry



- ▶ Baseline statistics
- ▶ Selection Matrix
- ▶ Homepage
- ▶ *Deutsch*

Munich Cancer Registry at Munich Cancer Center
Marchioninstr. 15
Munich, 81377
Germany

<http://www.tumorregister-muenchen.de/en>

Cancer statistics: Survival

C64-C68: Urinary tract cancer

Year of diagnosis	1988-2013
Patients	24,338
Diseases	25,278
Cases evaluated	12,700
Creation date	05/13/2015
Export date	12/30/2014
Population	4.64 m



http://www.tumorregister-muenchen.de/en/facts/surv/surv_C6468E.pdf

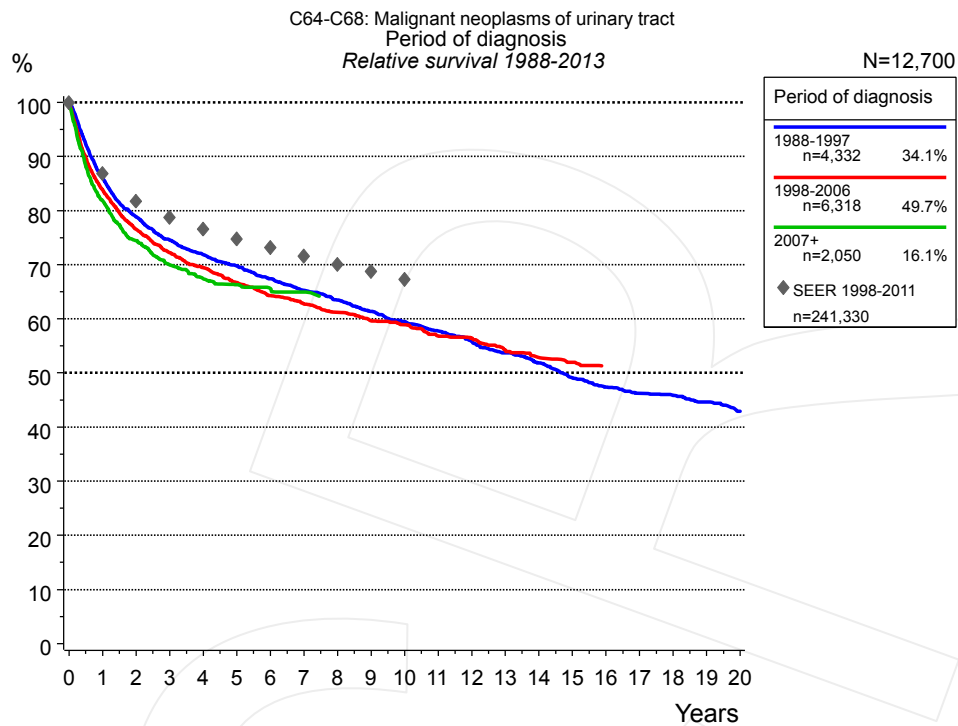


Figure 1a. Relative survival of patients with urinary tract cancer by period of diagnosis. Included in the evaluation are 12,700 cases diagnosed between 1988 and 2013.

The survival results of the SEER program (Surveillance, Epidemiology, and End Results) of the American National Cancer Institute (NCI) are summarized as the period of diagnosis from 1998 to 2011, and are represented by gray diamonds in order to facilitate comparisons between MCR and SEER.

The presented survival curves are derived from clinical records with valid follow-up informations, which means that death certificate cases (DCO) cases are omitted from the analysis. With this one restriction, the MCR has provided population-based statistics since 1988, collecting data on all cancer cases in the region of southern Bavaria. Historical data of previous time periods can be heavily selected, therefore, univariate survival comparisons of the presented time periods must be carefully considered. Nonetheless, all calculable survival curves are depicted to facilitate the comparison of long time follow-up analyses of relative survival between particular cancers.

Years	Period of diagnosis					
	1988-1997 n=4,332		1998-2006 n=6,318		2007+ n=2,050	
	obs. %	rel. %	obs. %	rel. %	obs. %	rel. %
0	100.0	100.0	100.0	100.0	100.0	100.0
1	83.1	86.1	80.9	83.8	79.0	81.8
2	73.6	78.8	71.6	76.5	69.9	74.5
3	67.4	74.5	65.5	72.2	63.9	69.9
4	63.0	71.8	61.1	69.4	59.9	67.4
5	59.3	69.8	57.0	66.7	57.2	66.3
6	55.6	67.4	53.3	64.3	55.0	65.6
7	52.2	65.3	50.5	62.7	53.5	64.9
8	49.2	63.5	47.9	61.2		
9	46.1	61.4	45.2	59.6		
10	43.4	59.5	43.3	58.9		
11	40.8	57.8	40.4	56.8		
12	38.3	56.0	38.8	56.4		
13	35.6	53.7	36.2	54.3		
14	33.3	51.8	34.0	52.9		
15	30.6	49.1	32.5	52.0		
16	28.5	47.4				
17	26.9	46.2				
18	25.8	45.9				
19	24.3	44.6				
20	22.4	42.9				

Table 1b. Observed (obs.) and relative (rel.) survival of patients with urinary tract cancer by period of diagnosis for period 1988-2013 (N=12,700).

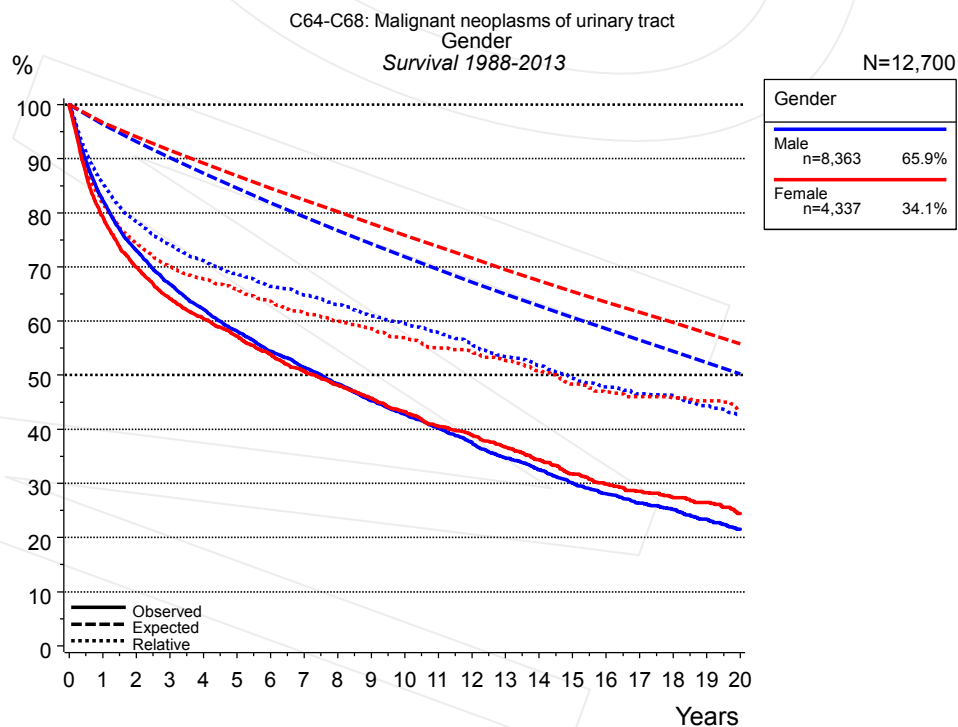


Figure 2a. Survival of patients with urinary tract cancer by gender. Included in the evaluation are 12,700 cases diagnosed between 1988 and 2013.

Years	Gender			
	Male n=8,363		Female n=4,337	
	obs. %	rel. %	obs. %	rel. %
0	100.0	100.0	100.0	100.0
1	82.4	85.5	79.3	82.0
2	73.1	78.4	70.0	74.4
3	66.8	74.1	64.1	70.0
4	62.2	71.2	60.5	67.8
5	58.2	68.8	57.2	65.9
6	54.4	66.4	53.8	63.6
7	51.4	64.8	50.7	61.5
8	48.4	63.0	48.2	60.0
9	45.3	61.0	45.7	58.6
10	42.8	59.5	43.3	57.0
11	40.2	57.8	40.6	55.0
12	37.6	56.0	38.9	54.3
13	34.7	53.4	36.7	52.8
14	32.5	51.8	34.4	50.8
15	30.0	49.5	31.8	48.4
16	28.0	47.9	29.9	46.9
17	26.4	46.6	28.5	46.0
18	25.2	46.2	27.4	45.8
19	23.4	44.4	26.5	45.3
20	21.6	42.7	24.4	43.7

Table 2b. Observed (obs.) and relative (rel.) survival of patients with urinary tract cancer by gender for period 1988-2013 (N=12,700).

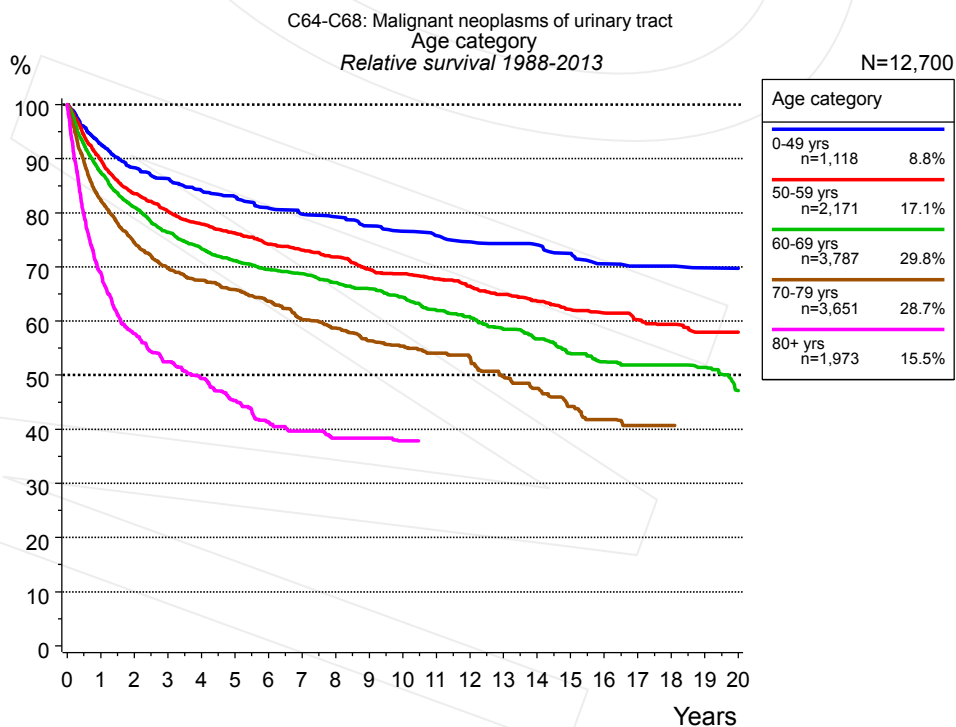


Figure 3a. Relative survival of patients with urinary tract cancer by age category. Included in the evaluation are 12,700 cases diagnosed between 1988 and 2013.

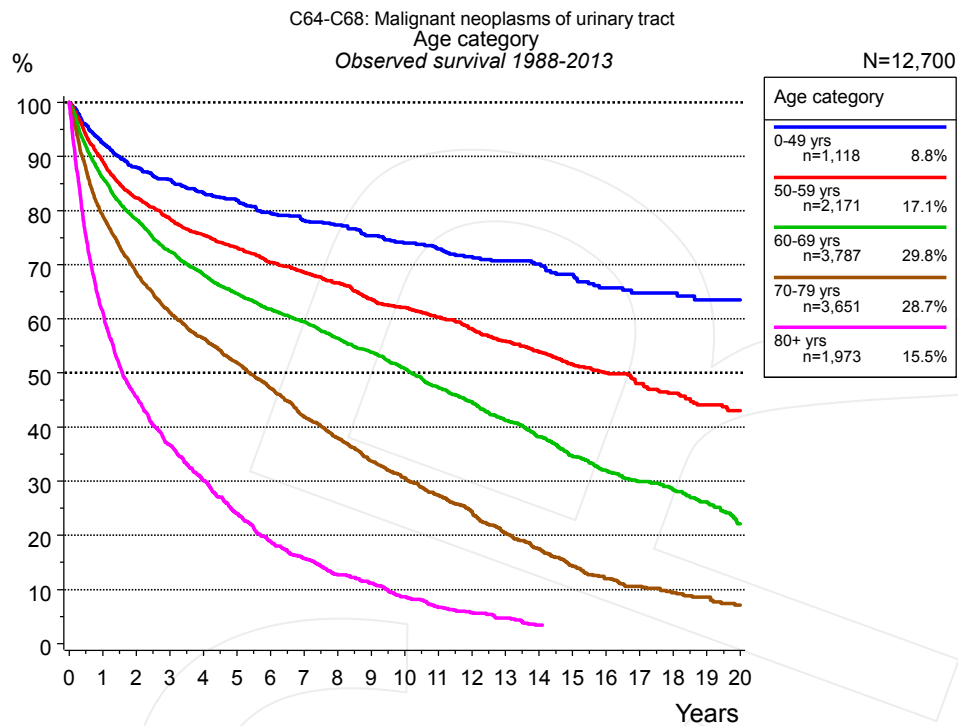


Figure 3b. Observed survival of patients with urinary tract cancer by age category. Included in the evaluation are 12,700 cases diagnosed between 1988 and 2013.

Years	Age category									
	0-49 yrs n=1,118		50-59 yrs n=2,171		60-69 yrs n=3,787		70-79 yrs n=3,651		80+ yrs n=1,973	
	obs. %	rel. %	obs. %	rel. %	obs. %	rel. %	obs. %	rel. %	obs. %	rel. %
0	100.0	100.0	100.0	100.0	100.0	100.0	100.0	100.0	100.0	100.0
1	92.5	92.7	89.1	89.8	86.0	87.5	79.1	82.4	61.5	69.1
2	88.0	88.4	82.3	83.6	78.3	81.1	68.5	74.5	45.6	57.6
3	85.7	86.3	78.5	80.3	72.4	76.4	61.1	69.7	36.7	52.5
4	83.3	84.1	75.5	78.0	68.2	73.4	56.4	67.5	30.1	49.4
5	81.9	83.0	73.1	76.3	64.7	71.2	51.9	65.8	24.1	45.3
6	79.6	80.9	70.4	74.2	61.8	69.6	47.2	63.6	19.0	41.4
7	78.2	79.8	68.6	73.1	59.5	68.8	41.8	60.2	15.7	39.7
8	77.3	79.3	66.6	71.9	56.4	67.1	38.0	58.7	12.7	38.4
9	75.3	77.6	63.6	69.6	53.8	66.0	33.7	56.3	11.2	38.4
10	74.0	76.6	62.1	68.8	50.8	64.4	30.6	55.4	8.7	37.9
11	72.9	75.8	60.3	67.9	47.3	62.0	27.4	54.1		
12	71.5	74.6	58.2	66.5	44.7	60.8	24.3	53.4		
13	70.7	74.3	55.9	64.9	41.2	58.5	20.5	49.8		
14	70.1	74.1	54.0	63.8	38.2	56.7	17.5	47.6		
15	68.2	72.5	51.6	62.1	34.6	54.0	14.3	44.2		
16	65.7	70.6	50.0	61.5	32.0	52.5	12.0	41.8		
17	64.8	70.2	48.1	60.3	29.9	51.9	10.6	40.7		
18	64.8	70.2	46.3	59.4	28.4	51.9	9.4	40.7		
19	63.4	69.9	44.1	58.0	26.2	51.4				
20	63.4	69.8	43.0	58.0	22.2	47.1				

Table 3c. Observed (obs.) and relative (rel.) survival of patients with urinary tract cancer by age category for period 1988-2013 (N=12,700).

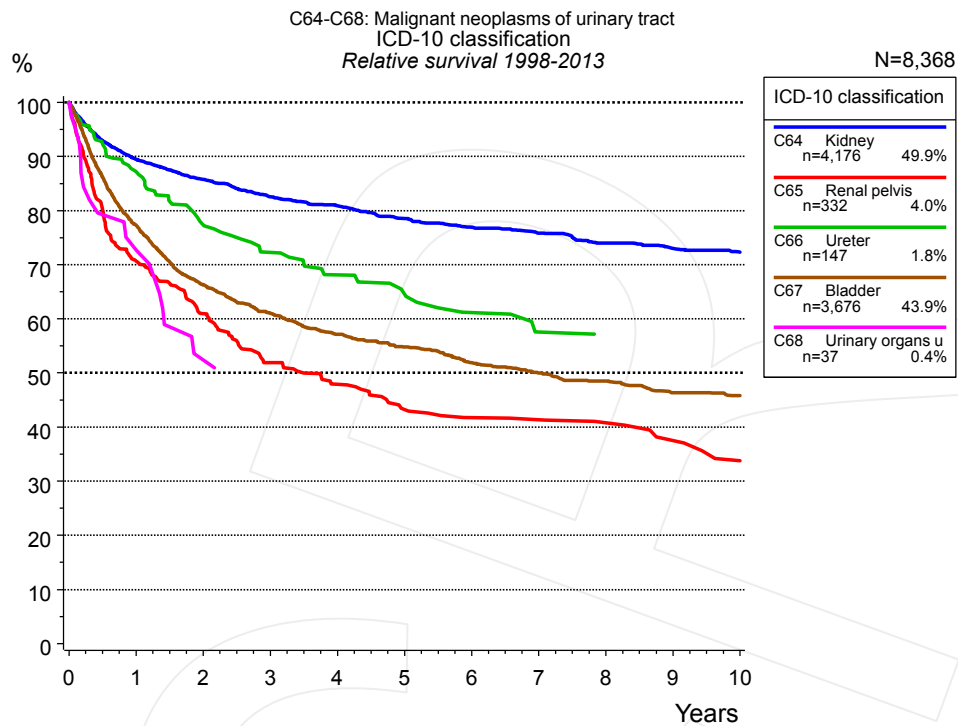


Figure 4a. Relative survival of patients with urinary tract cancer by ICD-10 classification. Included in the evaluation are 8,368 cases diagnosed between 1998 and 2013.

Years	ICD-10 classification									
	C64 Kidney n=4,176		C65 Renal pelvis n=332		C66 Ureter n=147		C67 Bladder n=3,676		C68 Urinary organs unspec. n=37	
	obs. %	rel. %	obs. %	rel. %	obs. %	rel. %	obs. %	rel. %	obs. %	rel. %
0	100.0	100.0	100.0	100.0	100.0	100.0	100.0	100.0	100.0	100.0
1	87.3	89.5	68.1	70.7	83.6	87.2	73.7	77.3	72.9	72.7
2	81.8	85.7	56.4	61.0	71.8	77.4	60.7	66.3	50.2	52.4
3	76.9	82.5	46.2	51.9	64.2	72.3	53.8	61.0		
4	73.6	80.9	41.1	47.9	58.2	68.1	48.5	57.1		
5	69.7	78.5	35.8	43.2	53.5	64.6	44.8	54.8		
6	66.6	76.9	33.3	41.7	48.3	61.2	40.8	51.9		
7	64.0	75.8	32.5	41.3	43.6	57.6	37.8	50.0		
8	60.9	74.0	30.8	40.8	41.9	57.2	35.5	48.5		
9	58.3	73.0	27.8	37.5	41.9	57.1	32.6	46.3		
10	56.2	72.3	24.2	33.7			31.1	45.8		

Table 4b. Observed (obs.) and relative (rel.) survival of patients with urinary tract cancer by ICD-10 classification for period 1998-2013 (N=8,368).

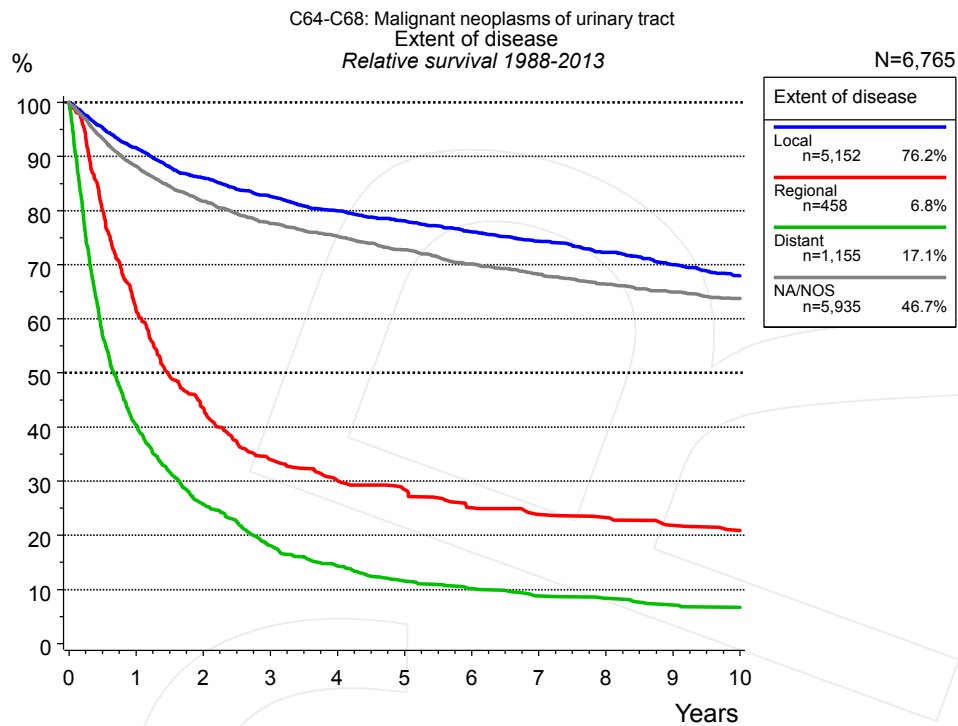


Figure 4c. Relative survival of patients with urinary tract cancer by extent of disease. For 11,987 of 12,700 cases diagnosed between 1988 and 2013 valid data could be obtained for this item. For a total of 6,765 cases an evaluable classification was established. The grey line represents the subgroup of 5,935 patients with missing values regarding extent of disease (46.7% of 12,700 patients, the percent values of all other categories are related to n=6,765).

Years	Extent of disease							
	Local n=5,152		Regional n=458		Distant n=1,155		NA/NOS n=5,935	
	obs. %	rel. %	obs. %	rel. %	obs. %	rel. %	obs. %	rel. %
0	100.0	100.0	100.0	100.0	100.0	100.0	100.0	100.0
1	88.5	91.7	59.9	61.6	39.2	40.4	84.9	88.2
2	80.6	86.0	41.2	43.6	24.3	25.7	76.1	81.8
3	75.2	82.6	31.3	34.0	16.8	18.1	70.0	77.7
4	70.7	79.9	27.2	30.1	13.0	14.3	65.7	75.3
5	67.1	78.1	24.9	28.5	10.2	11.5	61.5	72.8
6	63.5	76.1	21.4	25.1	8.8	10.2	57.5	70.1
7	60.3	74.3	19.8	23.9	7.4	8.8	54.0	68.2
8	57.1	72.3	19.1	23.3	6.9	8.4	50.9	66.4
9	53.6	70.0	17.3	21.9	5.8	7.1	48.1	65.0
10	50.5	67.9	16.2	20.9	5.3	6.7	45.8	63.8

Table 4d. Observed (obs.) and relative (rel.) survival of patients with urinary tract cancer by extent of disease for period 1988-2013 (N=6,765).

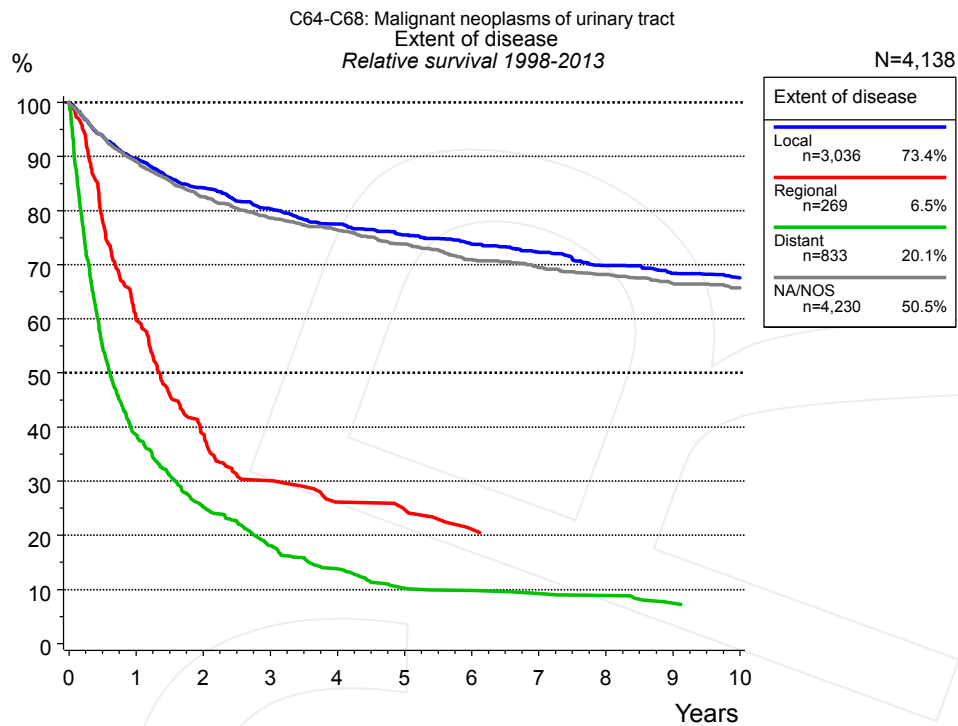


Figure 4e. Relative survival of patients with urinary tract cancer by extent of disease. For 7,989 of 8,368 cases diagnosed between 1998 and 2013 valid data could be obtained for this item. For a total of 4,138 cases an evaluable classification was established. The grey line represents the subgroup of 4,230 patients with missing values regarding extent of disease (50.5% of 8,368 patients, the percent values of all other categories are related to n=4,138).

Years	Extent of disease							
	Local n=3,036		Regional n=269		Distant n=833		NA/NOS n=4,230	
	obs. %	rel. %	obs. %	rel. %	obs. %	rel. %	obs. %	rel. %
0	100.0	100.0	100.0	100.0	100.0	100.0	100.0	100.0
1	86.4	89.7	58.4	59.9	37.5	38.6	86.0	89.1
2	78.6	84.2	36.9	38.7	23.8	25.1	77.2	82.6
3	72.8	80.3	28.2	30.1	16.8	18.1	71.3	78.6
4	68.2	77.5	23.5	26.1	12.5	13.8	67.3	76.4
5	64.6	75.5	21.9	24.8	9.1	10.2	63.0	73.8
6	61.4	73.8	18.4	21.1	8.7	9.8	58.8	70.9
7	58.4	72.3	17.5	19.8	7.9	9.2	55.8	69.5
8	54.9	69.9			7.6	8.8	53.1	68.2
9	52.2	68.4			6.3	7.5	50.0	66.5
10	50.0	67.6			5.9	6.8	48.0	65.7

Table 4f. Observed (obs.) and relative (rel.) survival of patients with urinary tract cancer by extent of disease for period 1998-2013 (N=4,138).

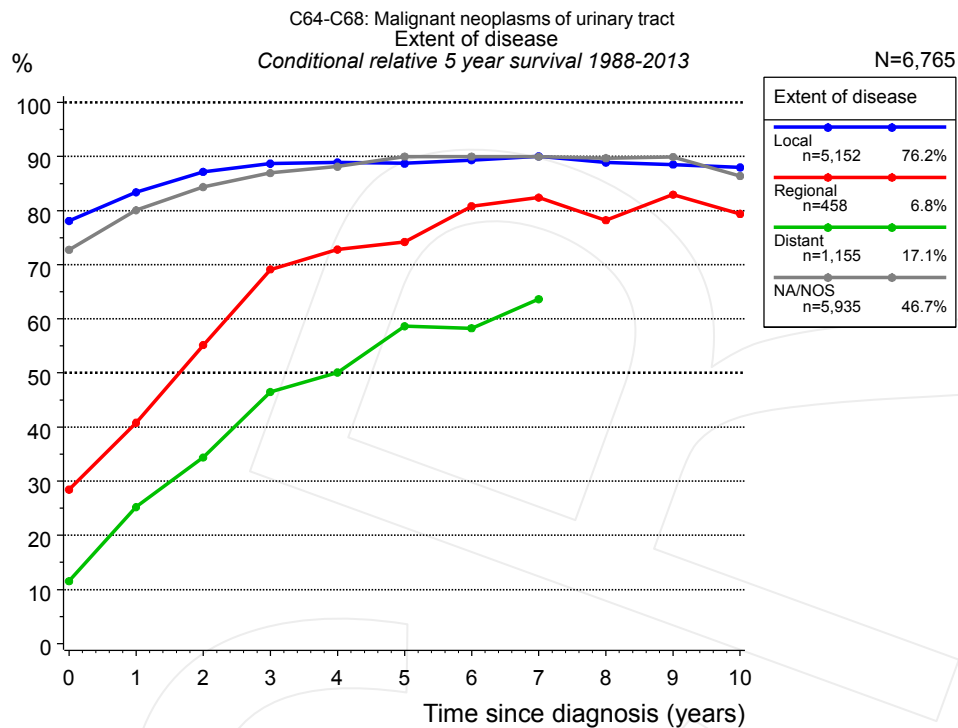


Figure 4g. Conditional relative 5-year survival of patients with urinary tract cancer by extent of disease. For 11,987 of 12,700 cases diagnosed between 1988 and 2013 valid data could be obtained for this item. For a total of 6,765 cases an evaluable classification was established. The grey line represents the subgroup of 5,935 patients with missing values regarding extent of disease (46.7% of 12,700 patients, the percent values of all other categories are related to n=6,765).

Years	Extent of disease			
	Local n Cond. surv. % 5 yrs	Regional n Cond. surv. % 5 yrs	Distant n Cond. surv. % 5 yrs	NA/NOS n Cond. surv. % 5 yrs
0	5,152 78.1	458 28.5	1,155 11.5	5,935 72.8
1	4,354 83.4	264 40.8	422 25.2	4,778 80.1
2	3,734 87.2	166 55.2	245 34.4	3,935 84.4
3	3,236 88.7	118 69.1	157 46.5	3,339 86.9
4	2,836 88.9	98 72.8	115 50.1	2,871 88.1
5	2,477 88.7	81 74.2	83 58.6	2,419 90.0
6	2,199 89.3	67 80.8	66 58.3	2,029 90.0
7	1,979 90.0	57 82.4	51 63.6	1,758 90.0
8	1,772 88.9	54 78.2		1,504 89.7
9	1,552 88.5	48 83.0		1,266 89.9
10	1,362 88.0	43 79.4		1,069 86.4

Table 4h. Conditional relative 5-year survival of patients with urinary tract cancer by extent of disease for period 1988-2013 (N=6,765).

Conditional relative survival rates refer to the relative survival probability, in this case for 5 years after cancer diagnosis, compared to the age- and sex-matched population (=100%) under the condition of being alive for a certain time period (x-axis in Figure 4e). The results illustrate to what extent the cancer induced mortality of particular subgroups declines in the subsequent years after detection of the malignancy. For instance, according to the presented survival statistics, patients in the subgroup extent of disease="Local", who are alive at least 3 years after cancer diagnosis, the conditional relative 5-year survival rate is 88.7% (n=3,236).

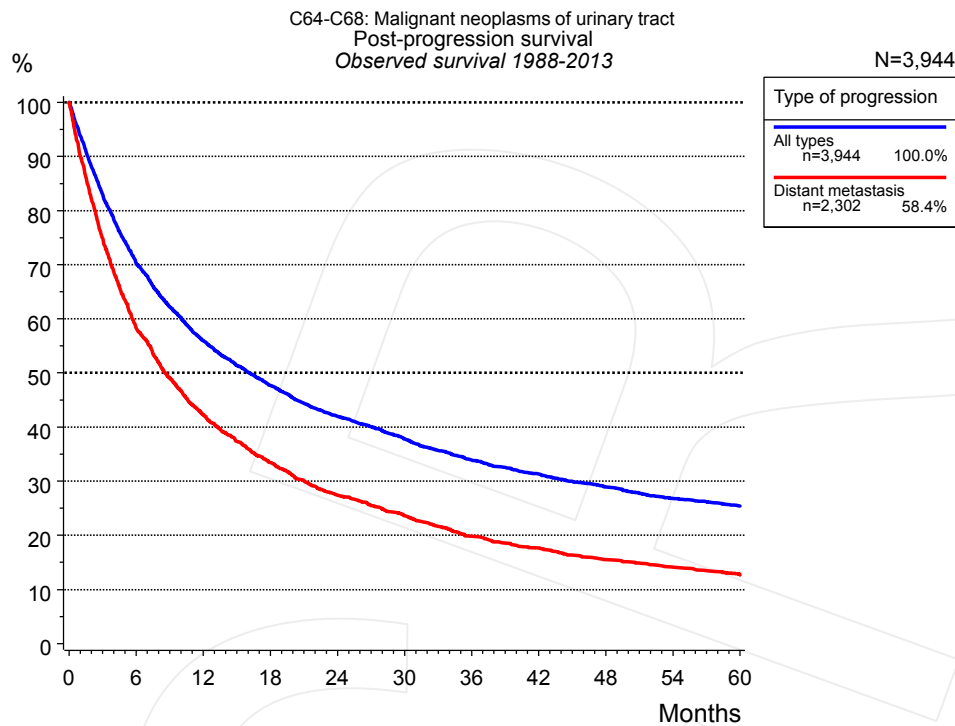


Figure 5a. Observed post-progression survival of 3,944 patients with urinary tract cancer diagnosed between 1988 and 2013 (incl. M1). These 3,944 patients with documented progression events during their course of disease represent 31.1% of the totally 12,700 evaluated cases. Patients with cancer relapse documented via death certificates only were excluded (n=868, 6.8%). Multiple progression types on different sites are included in the evaluation even when not occurring synchronously.

Medical record documentation often lacks the linguistic severity to distinguish between local relapse, regional lymph node metastasis and distant spread in solid cancers. Frequently, the statement “not specified” is the only information in registries regarding relapse of the disease. The category “All types” denotes all cases who suffered from at least one relapse during the course of disease (incl. primary M1-status). Although, the real number of relapsed patients is likely to be much higher. The accumulated percentage of patients with local relapse or distant metastasis exceeds the 100% value because patients are potentially considered in more than one subgroup.

Months	Type of progression	
	All types n=3,944 %	Distant metastasis n=2,302 %
0	100.0	100.0
12	56.0	42.2
24	42.0	27.4
36	33.9	19.9
48	28.9	15.5
60	25.4	12.7

Table 5b. Observed post-progression survival of patients with urinary tract cancer for period 1988-2013 (N=3,944).

Shortcuts

MCR	Munich Cancer Registry, Germany (Tumorregister München)
NCI	National Cancer Institute, USA
SEER	Surveillance, Epidemiology, and End Results, USA
UICC	Union for International Cancer Control, Geneva
DCO	Death certificate only. The death certificate provides the only notification to the registry.
NA	Not available
NOS	Not otherwise specified
OS	Observed/overall survival (Kaplan-Meier estimate)
RS	Relative survival, compared to the general population, ratio of observed to expected survival (Ederer II method), reflecting excess mortality among cancer patients
AS	Assembled survival chart (observed, expected, relative)
PPS	Post-progression survival, survival since first relapse (Kaplan-Meier estimate)
progression	Date of entry: Date of first locoregional recurrence, distant metastasis, unspecified
	Event: Death of all causes
CS	Conditional survival, survival probability under the condition of surviving a given period of time

Recommended Citation

Munich Cancer Registry. Survival C64-C68: Urinary tract cancer [Internet]. 2015 [updated 2015 May 13; cited 2015 Jul 1]. Available from: http://www.tumorregister-muenchen.de/en/facts/surv/surv_C6468E.pdf

Copyright

The content of the public web site provided by the Munich Cancer Registry is available worldwide and free of charge. All documents are free to download, utilize, copy, print-out and distribute, providing that the MCR is referenced.

Disclaimer

The Munich Cancer Registry reserves the right to not be responsible for the topicality, correctness, completeness or quality of the information provided. Liability claims regarding damage caused by the use of any information provided, including any kind of information which is incomplete or incorrect, will therefore be rejected.

Index of figures and tables

Fig./Tbl.		Page
1a	Relative survival by period of diagnosis (chart)	2
1b	Survival by period of diagnosis (table)	3
2a	Survival by gender (chart)	3
2b	Survival by gender (table)	4
3a	Relative survival by age category (chart)	4
3b	Observed survival by age category (chart)	5
3c	Survival by age category (table)	5
4a	Relative survival by ICD-10 classification (chart)	6
4b	Survival by ICD-10 classification (table)	6
4c	Relative survival by extent of disease 1988+ (chart)	7
4d	Survival by extent of disease 1988+ (table)	7
4e	Relative survival by extent of disease 1998+ (chart)	8
4f	Survival by extent of disease 1998+ (table)	8
4g	Conditional survival by extent of disease (chart)	9
4h	Conditional survival by extent of disease (table)	9
5a	Observed post-progression survival (chart)	10
5b	Observed post-progression survival (table)	10