

Munich Cancer Registry



- ▶ Baseline statistics
- ▶ Selection Matrix
- ▶ Homepage
- ▶ *Deutsch*

Munich Cancer Registry at Munich Cancer Center
Marchioninstr. 15
Munich, 81377
Germany

<http://www.tumorregister-muenchen.de/en>

Cancer statistics: Survival

C66: Ureteral cancer

Year of diagnosis	1988-2013
Patients	588
Diseases	594
Cases evaluated	208
Creation date	05/13/2015
Export date	12/30/2014
Population	4.64 m



http://www.tumorregister-muenchen.de/en/facts/surv/surv_C66__E.pdf

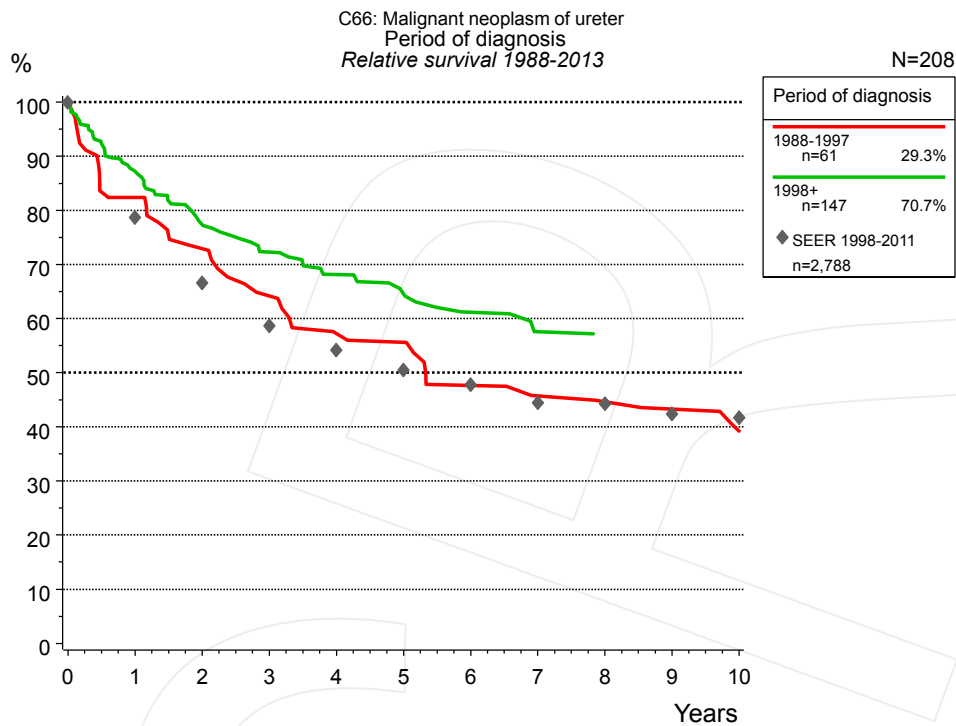


Figure 1a. Relative survival of patients with ureteral cancer by period of diagnosis. Included in the evaluation are 208 cases diagnosed between 1988 and 2013.

The presented survival curves are derived from clinical records with valid follow-up informations, which means that death certificate cases (DCO) cases are omitted from the analysis. With this one restriction, the MCR has provided population-based statistics since 1988, collecting data on all cancer cases in the region of southern Bavaria. Historical data of previous time periods can be heavily selected, therefore, univariate survival comparisons of the presented time periods must be carefully considered. Nonetheless, all calculable survival curves are depicted to facilitate the comparison of long time follow-up analyses of relative survival between particular cancers.

Years	Period of diagnosis			
	1988-1997 n=61		1998+ n=147	
	obs. %	rel. %	obs. %	rel. %
0	100.0	100.0	100.0	100.0
1	80.3	82.4	83.6	87.2
2	68.6	72.9	71.8	77.4
3	58.4	64.2	64.2	72.3
4	49.8	57.3	58.2	68.1
5	48.1	55.6	53.5	64.6
6	39.5	47.7	48.3	61.2
7	35.9	45.7	43.6	57.6
8	34.1	44.6	41.9	57.2
9	32.3	43.3	41.9	57.1
10	28.7	39.2		

Table 1b. Observed (obs.) and relative (rel.) survival of patients with ureteral cancer by period of diagnosis for period 1988-2013 (N=208).

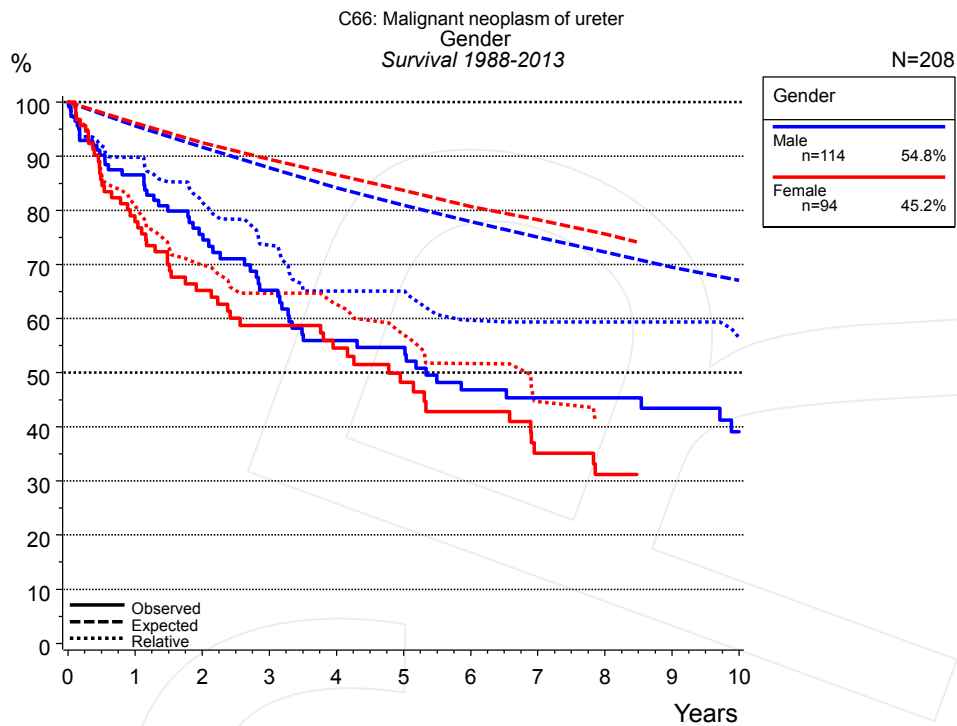


Figure 2a. Survival of patients with ureteral cancer by gender. Included in the evaluation are 208 cases diagnosed between 1988 and 2013.

	Gender			
	Male n=114		Female n=94	
Years	obs. %	rel. %	obs. %	rel. %
0	100.0	100.0	100.0	100.0
1	86.6	89.8	77.9	80.9
2	75.6	81.5	65.2	69.9
3	65.3	73.6	58.7	64.7
4	55.9	65.1	54.6	62.6
5	54.7	65.1	48.2	57.0
6	46.8	59.7	42.8	51.7
7	45.4	59.4	35.1	44.7
8	45.4	59.4	31.2	41.0
9	43.5	59.4	31.2	40.5
10	39.1	56.4		

Table 2b. Observed (obs.) and relative (rel.) survival of patients with ureteral cancer by gender for period 1988-2013 (N=208).

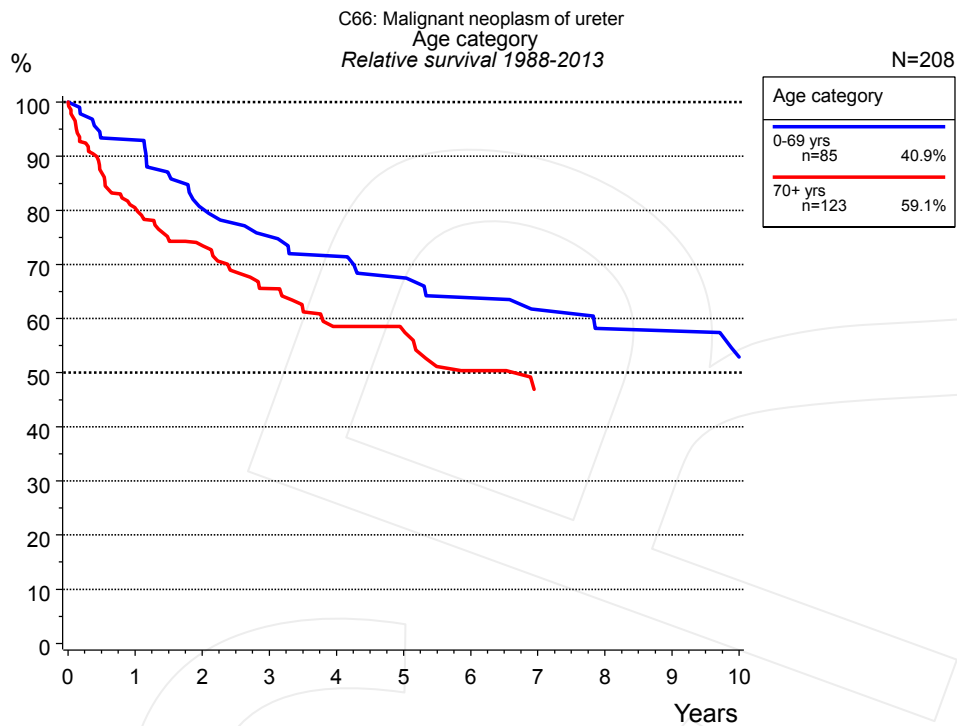


Figure 3a. Relative survival of patients with ureteral cancer by age category. Included in the evaluation are 208 cases diagnosed between 1988 and 2013.

Years	Age category			
	0-69 yrs n=85		70+ yrs n=123	
	obs. %	rel. %	obs. %	rel. %
0	100.0	100.0	100.0	100.0
1	92.8	93.0	75.5	80.4
2	78.7	80.3	65.4	73.5
3	73.1	75.2	54.6	65.5
4	68.9	71.5	45.2	58.6
5	64.5	67.5	42.5	57.7
6	59.6	63.9	33.9	50.4
7	55.8	61.6	29.4	46.9
8	51.6	58.1	29.4	46.9
9	51.6	57.7		
10	46.5	52.9		

Table 3b. Observed (obs.) and relative (rel.) survival of patients with ureteral cancer by age category for period 1988-2013 (N=208).

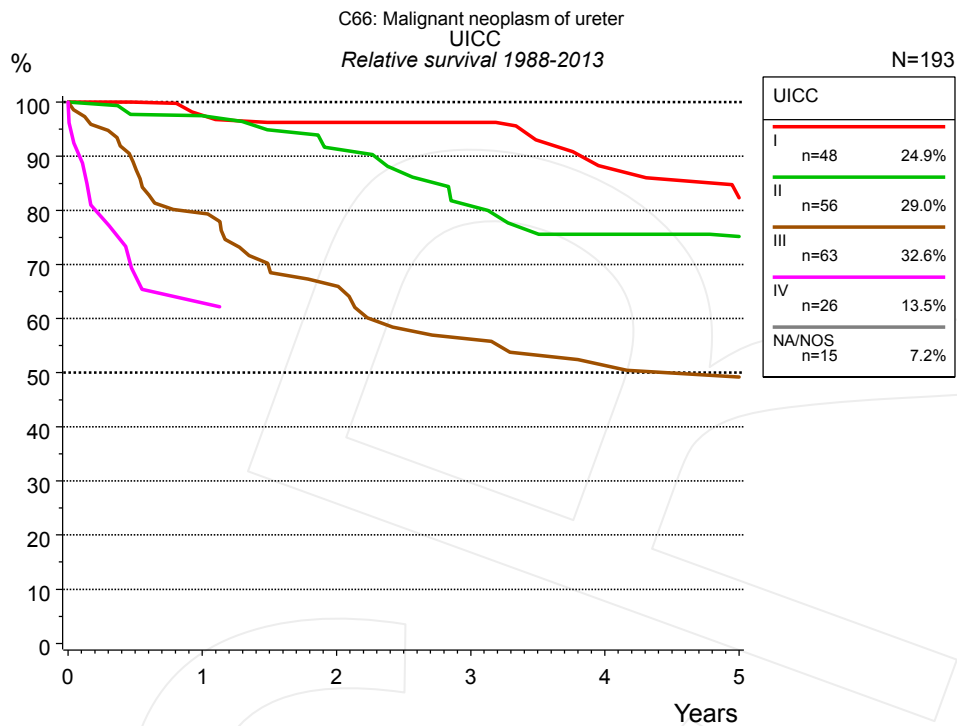


Figure 4a. Relative survival of patients with ureteral cancer by UICC. For 196 of 208 cases diagnosed between 1988 and 2013 valid data could be obtained for this item. For a total of 193 cases an evaluable classification was established. The grey line represents the subgroup of 15 patients with missing values regarding UICC (7.2% of 208 patients, the percent values of all other categories are related to n=193).

		UICC									
		I n=48		II n=56		III n=63		IV n=26		NA/NOS n=15	
Years		obs. %	rel. %	obs. %	rel. %	obs. %	rel. %	obs. %	rel. %	obs. %	rel. %
0		100.0	100.0	100.0	100.0	100.0	100.0	100.0	100.0	100.0	100.0
1		93.7	97.6	94.1	97.5	77.4	79.5	64.5	62.9		
2		89.3	96.3	85.4	91.3	62.1	66.0				
3		86.7	96.3	73.5	80.8	50.6	56.2				
4		72.9	87.9	66.3	75.5	44.6	51.3				
5		67.1	82.3	63.5	75.2	42.3	49.2				

Table 4b. Observed (obs.) and relative (rel.) survival of patients with ureteral cancer by UICC for period 1988-2013 (N=193).

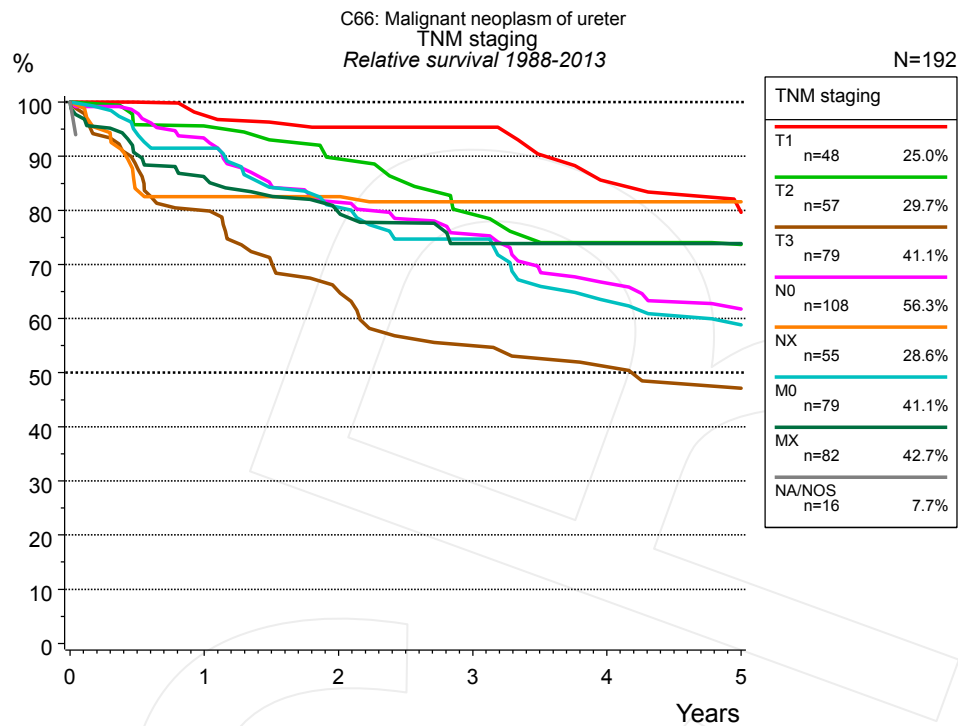


Figure 4c. Relative survival of patients with ureteral cancer by TNM staging. For 196 of 208 cases diagnosed between 1988 and 2013 valid data could be obtained for this item. For a total of 192 cases an evaluable classification was established. The accumulated percentage exceeds the 100% value because patients are potentially considered in more than one subgroup. The grey line represents the subgroup of 16 patients with missing values regarding TNM staging (7.7% of 208 patients, the percent values of all other categories are related to n=192).

TNM staging														
	T1 n=48		T2 n=57		T3 n=79		N0 n=108		NX n=55		M0 n=79		MX n=82	
Years	obs. %	rel. %	obs. %	rel. %	obs. %	rel. %	obs. %	rel. %	obs. %	rel. %	obs. %	rel. %	obs. %	rel. %
0	100.0	100.0	100.0	100.0	100.0	100.0	100.0	100.0	100.0	100.0	100.0	100.0	100.0	100.0
1	93.7	97.6	92.3	95.6	78.0	80.0	90.2	93.3	79.7	82.5	89.6	91.5	82.0	86.2
2	87.0	95.4	83.8	89.5	61.4	65.1	76.7	81.5	75.6	82.5	75.8	80.6	73.4	79.6
3	84.4	95.4	72.1	79.3	50.2	55.0	68.9	75.5	70.8	81.6	68.7	74.7	64.4	73.9
4	70.6	85.3	65.0	74.1	45.2	51.1	58.5	66.5	65.5	81.6	55.6	63.3	62.4	73.9
5	64.7	79.6	62.3	73.7	41.6	47.2	53.7	61.8	65.5	81.6	51.1	58.8	62.4	73.9

TNM staging cont'd		
NA/NOS n=16		
Years	obs. %	rel. %
0	100.0	100.0

Table 4d. Observed (obs.) and relative (rel.) survival of patients with ureteral cancer by TNM staging for period 1988-2013 (N=508).

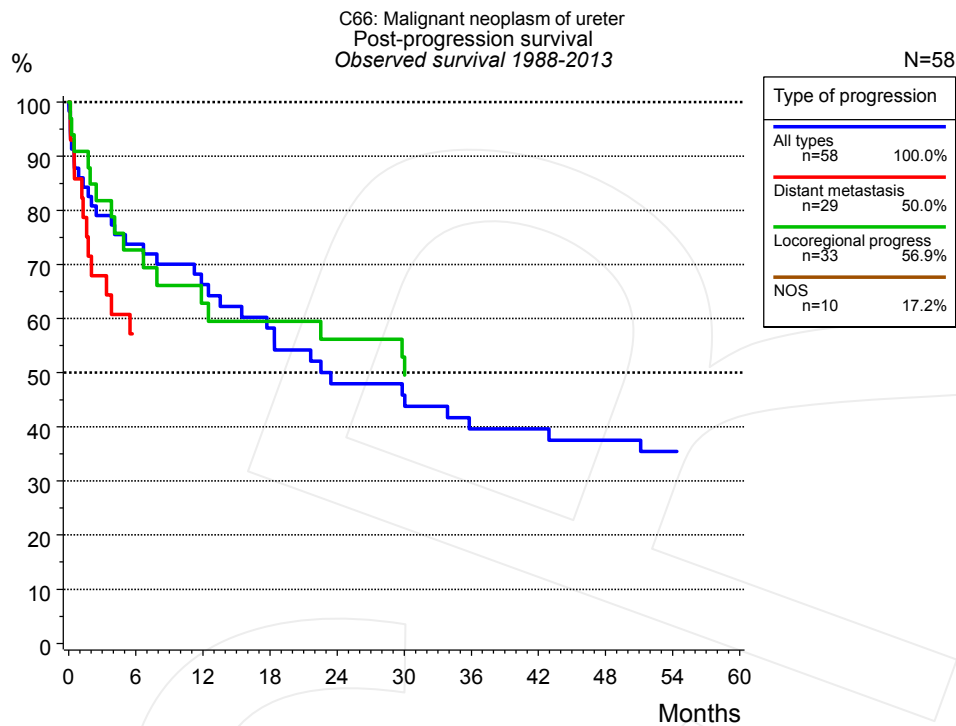


Figure 5a. Observed post-progression survival of 58 patients with ureteral cancer diagnosed between 1988 and 2013 (incl. M1). These 58 patients with documented progression events during their course of disease represent 27.9% of the totally 208 evaluated cases. Patients with cancer relapse documented via death certificates only were excluded (n=15, 7.2%). Multiple progression types on different sites are included in the evaluation even when not occurring synchronously. The NOS (not otherwise specified) class is included under the condition, that it is the one and only progression type during the course of disease. Subgroups with sample size <15 are dropped from the chart.

Medical record documentation often lacks the linguistic severity to distinguish between local relapse, regional lymph node metastasis and distant spread in solid cancers. Frequently, the statement “not specified” is the only information in registries regarding relapse of the disease. The category “All types” denotes all cases who suffered from at least one relapse during the course of disease (incl. primary M1-status). Although, the real number of relapsed patients is likely to be much higher. The accumulated percentage of patients with local relapse or distant metastasis exceeds the 100% value because patients are potentially considered in more than one subgroup.

Months	Type of progression			
	All types n=58	Distant metastasis n=29	Locoregional progress n=33	NOS n=10
	%	%	%	%
0	100.0	100.0	100.0	100.0
12	66.3		62.8	
24	48.0		56.2	
36	39.6			
48	37.5			

Table 5b. Observed post-progression survival of patients with ureteral cancer for period 1988-2013 (N=58).

Shortcuts

MCR	Munich Cancer Registry, Germany (Tumorregister München)
NCI	National Cancer Institute, USA
SEER	Surveillance, Epidemiology, and End Results, USA
UICC	Union for International Cancer Control, Geneva
DCO	Death certificate only. The death certificate provides the only notification to the registry.
NA	Not available
NOS	Not otherwise specified
OS	Observed/overall survival (Kaplan-Meier estimate)
RS	Relative survival, compared to the general population, ratio of observed to expected survival (Ederer II method), reflecting excess mortality among cancer patients
AS	Assembled survival chart (observed, expected, relative)
PPS	Post-progression survival, survival since first relapse (Kaplan-Meier estimate)
progression	Date of entry: Date of first locoregional recurrence, distant metastasis, unspecified
	Event: Death of all causes
CS	Conditional survival, survival probability under the condition of surviving a given period of time

Recommended Citation

Munich Cancer Registry. Survival C66: Ureteral cancer [Internet]. 2015 [updated 2015 May 13; cited 2015 Jul 1]. Available from: http://www.tumorregister-muenchen.de/en/facts/surv/surv_C66__E.pdf

Copyright

The content of the public web site provided by the Munich Cancer Registry is available worldwide and free of charge. All documents are free to download, utilize, copy, print-out and distribute, providing that the MCR is referenced.

Disclaimer

The Munich Cancer Registry reserves the right to not be responsible for the topicality, correctness, completeness or quality of the information provided. Liability claims regarding damage caused by the use of any information provided, including any kind of information which is incomplete or incorrect, will therefore be rejected.

Index of figures and tables

Fig./Tbl.		Page
1a	Relative survival by period of diagnosis (chart)	2
1b	Survival by period of diagnosis (table)	2
2a	Survival by gender (chart)	3
2b	Survival by gender (table)	3
3a	Relative survival by age category (chart)	4
3b	Survival by age category (table)	4
4a	Relative survival by UICC (chart)	5
4b	Survival by UICC (table)	5
4c	Relative survival by TNM staging (chart)	6
4d	Survival by TNM staging (table)	6
5a	Observed post-progression survival (chart)	7
5b	Observed post-progression survival (table)	7