

Munich Cancer Registry



- ▶ [Baseline statistics](#)
- ▶ [Selection Matrix](#)
- ▶ [Homepage](#)
- ▶ [Deutsch](#)

Munich Cancer Registry at Munich Cancer Center
Marchioninstr. 15
Munich, 81377
Germany

<http://www.tumorregister-muenchen.de/en>

Cancer statistics: Survival

C75: Other endocrine glands cancer

Year of diagnosis	1988-2013
Patients	136
Diseases	136
Cases evaluated	54
Creation date	05/13/2015
Export date	12/30/2014
Population	4.64 m



http://www.tumorregister-muenchen.de/en/facts/surv/surv_C75__E.pdf

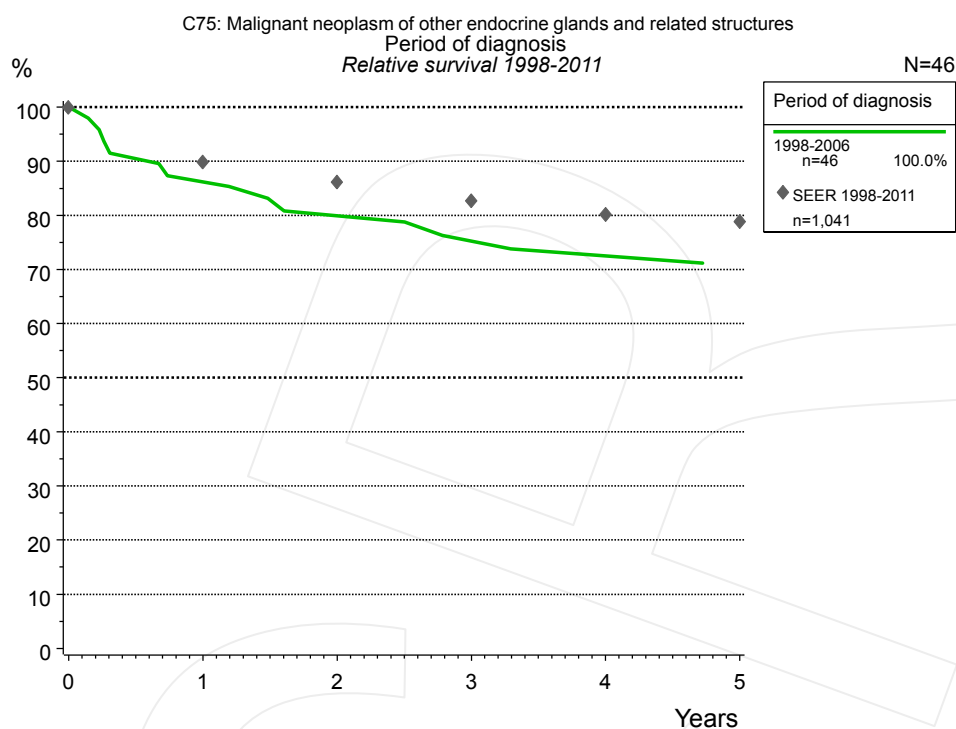


Figure 1a. Relative survival of patients with other endocrine glands cancer by period of diagnosis. Included in the evaluation are 46 cases diagnosed between 1998 and 2011.

The survival results of the SEER program (Surveillance, Epidemiology, and End Results) of the American National Cancer Institute (NCI) are summarized as the period of diagnosis from 1998 to 2011, and are represented by gray diamonds in order to facilitate comparisons between MCR and SEER.

The presented survival curves are derived from clinical records with valid follow-up informations, which means that death certificate cases (DCO) cases are omitted from the analysis. With this one restriction, the MCR has provided population-based statistics since 1988, collecting data on all cancer cases in the region of southern Bavaria. Historical data of previous time periods can be heavily selected, therefore, univariate survival comparisons of the presented time periods must be carefully considered. Nonetheless, all calculable survival curves are depicted to facilitate the comparison of long time follow-up analyses of relative survival between particular cancers.

Period of diagnosis		
1998-2006		
n=46		
Years	obs. %	rel. %
0	100.0	100.0
1	86.9	86.2
2	79.9	79.9
3	74.7	75.2
4	72.0	72.5
5	68.8	70.5

Table 1b. Observed (obs.) and relative (rel.) survival of patients with other endocrine glands cancer by period of diagnosis for period 1998-2011 (N=46).

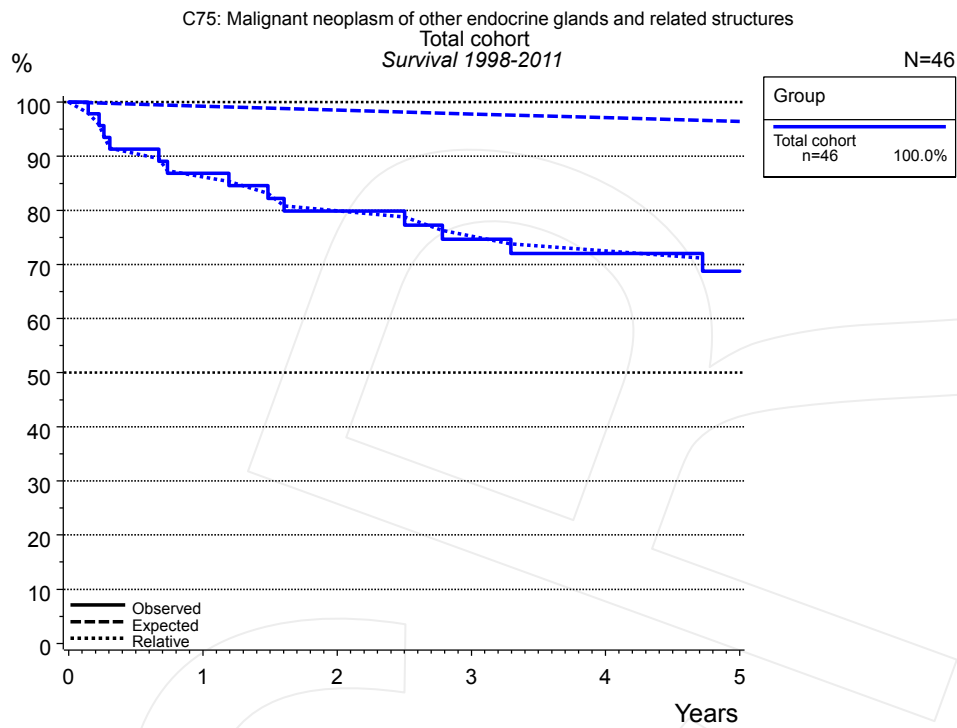


Figure 2a. Observed, expected and relative survival of the total cohort with other endocrine glands cancer. Included in the evaluation are 46 cases diagnosed between 1998 and 2011.

Years	Group	
	Total cohort n=46	
	obs. %	rel. %
0	100.0	100.0
1	86.9	86.2
2	79.9	79.9
3	74.7	75.2
4	72.0	72.5
5	68.8	70.5

Table 2b. Observed (obs.) and relative (rel.) survival of the total cohort with other endocrine glands cancer for period 1998-2011 (N=46).

Shortcuts

MCR	Munich Cancer Registry, Germany (Tumorregister München)
NCI	National Cancer Institute, USA
SEER	Surveillance, Epidemiology, and End Results, USA
UICC	Union for International Cancer Control, Geneva
DCO	Death certificate only. The death certificate provides the only notification to the registry.
NA	Not available
NOS	Not otherwise specified
OS	Observed/overall survival (Kaplan-Meier estimate)
RS	Relative survival, compared to the general population, ratio of observed to expected survival (Ederer II method), reflecting excess mortality among cancer patients
AS	Assembled survival chart (observed, expected, relative)
PPS	Post-progression survival, survival since first relapse (Kaplan-Meier estimate)
progression	Date of entry: Date of first locoregional recurrence, distant metastasis, unspecified
	Event: Death of all causes
CS	Conditional survival, survival probability under the condition of surviving a given period of time

Recommended Citation

Munich Cancer Registry. Survival C75: Other endocrine glands cancer [Internet]. 2015 [updated 2015 May 13; cited 2015 Jul 1]. Available from: http://www.tumorregister-muenchen.de/en/facts/surv/surv_C75__E.pdf

Copyright

The content of the public web site provided by the Munich Cancer Registry is available worldwide and free of charge. All documents are free to download, utilize, copy, print-out and distribute, providing that the MCR is referenced.

Disclaimer

The Munich Cancer Registry reserves the right to not be responsible for the topicality, correctness, completeness or quality of the information provided. Liability claims regarding damage caused by the use of any information provided, including any kind of information which is incomplete or incorrect, will therefore be rejected.

Index of figures and tables

Fig./Tbl.		Page
1a	Relative survival by period of diagnosis (chart)	2
1b	Survival by period of diagnosis (table)	2
2a	Survival of total cohort (chart)	3
2b	Survival of total cohort (table)	3