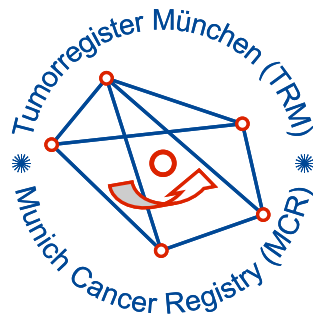


# Munich Cancer Registry



- ▶ Baseline statistics
- ▶ Selection Matrix
- ▶ Homepage
- ▶ *Deutsch*

Munich Cancer Registry at Munich Cancer Center  
Marchioninstr. 15  
Munich, 81377  
Germany

<http://www.tumorregister-muenchen.de/en>

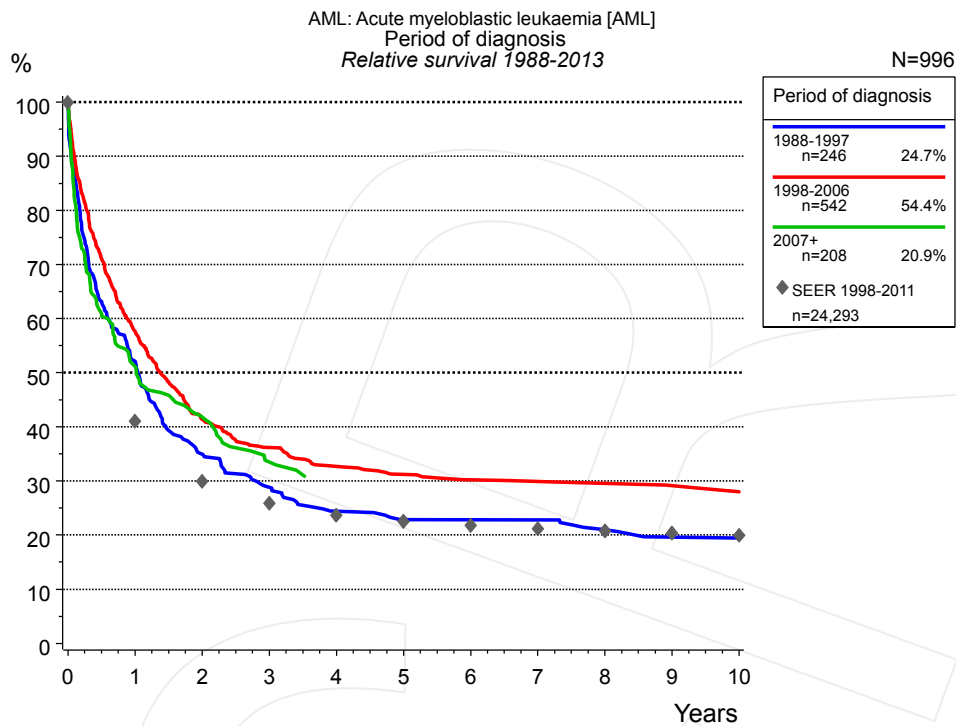
## Cancer statistics: Survival

### AML: Acute myelobl. leukemia

Year of diagnosis	1988-2013
Patients	2,709
Diseases	2,711
Cases evaluated	996
Creation date	05/13/2015
Export date	12/30/2014
Population	4.64 m



[http://www.tumorregister-muenchen.de/en/facts/surv/surv\\_C920\\_E.pdf](http://www.tumorregister-muenchen.de/en/facts/surv/surv_C920_E.pdf)

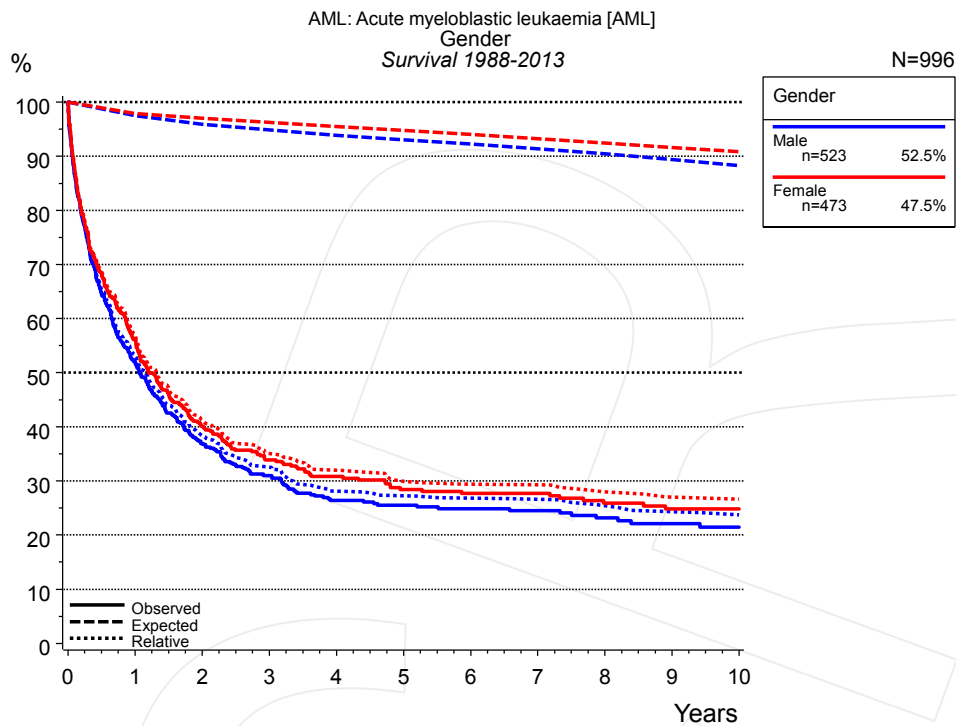


**Figure 1a.** Relative survival of patients with acute myelobl. leukemia by period of diagnosis. Included in the evaluation are 996 cases diagnosed between 1988 and 2013.

The presented survival curves are derived from clinical records with valid follow-up informations, which means that death certificate cases (DCO) cases are omitted from the analysis. With this one restriction, the MCR has provided population-based statistics since 1988, collecting data on all cancer cases in the region of southern Bavaria. Historical data of previous time periods can be heavily selected, therefore, univariate survival comparisons of the presented time periods must be carefully considered. Nonetheless, all calculable survival curves are depicted to facilitate the comparison of long time follow-up analyses of relative survival between particular cancers.

Years	Period of diagnosis					
	1988-1997 n=246		1998-2006 n=542		2007+ n=208	
	obs. %	rel. %	obs. %	rel. %	obs. %	rel. %
0	100.0	100.0	100.0	100.0	100.0	100.0
1	51.1	52.1	56.6	57.6	50.2	51.2
2	34.2	34.9	40.0	41.4	40.3	41.9
3	27.9	28.8	34.7	36.2	32.2	33.5
4	23.2	24.4	31.1	32.7		
5	21.5	22.8	29.4	31.2		
6	21.5	22.8	28.1	30.2		
7	21.5	22.8	27.8	29.9		
8	19.3	21.0	26.9	29.5		
9	18.0	19.6	26.3	29.1		
10	18.0	19.4	25.6	28.0		

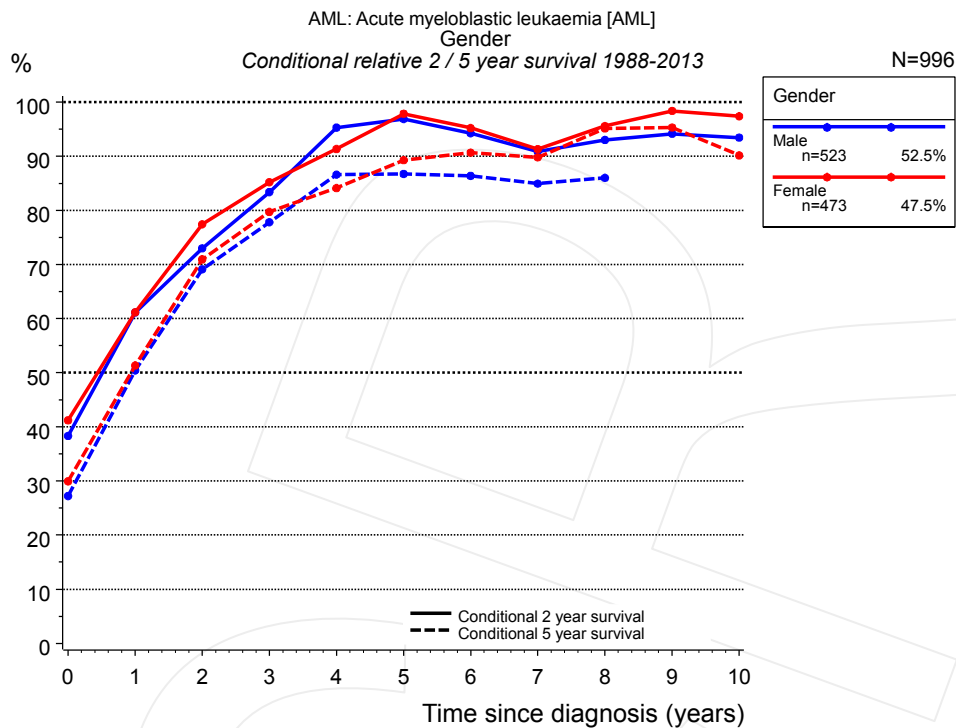
**Table 1b.** Observed (obs.) and relative (rel.) survival of patients with acute myelobl. leukemia by period of diagnosis for period 1988-2013 (N=996).



**Figure 2a.** Survival of patients with acute myelobl. leukemia by gender. Included in the evaluation are 996 cases diagnosed between 1988 and 2013.

Years	Gender			
	Male n=523		Female n=473	
	obs. %	rel. %	obs. %	rel. %
0	100.0	100.0	100.0	100.0
1	51.9	53.2	56.1	57.1
2	36.9	38.4	40.1	41.2
3	31.0	32.5	33.9	35.1
4	26.4	28.1	30.8	32.0
5	25.6	27.2	28.4	29.9
6	24.9	26.8	27.7	29.4
7	24.5	26.6	27.7	29.3
8	23.2	25.4	25.9	28.0
9	22.1	24.3	24.8	27.0
10	21.5	23.7	24.8	26.7

**Table 2b.** Observed (obs.) and relative (rel.) survival of patients with acute myelobl. leukemia by gender for period 1988-2013 (N=996).

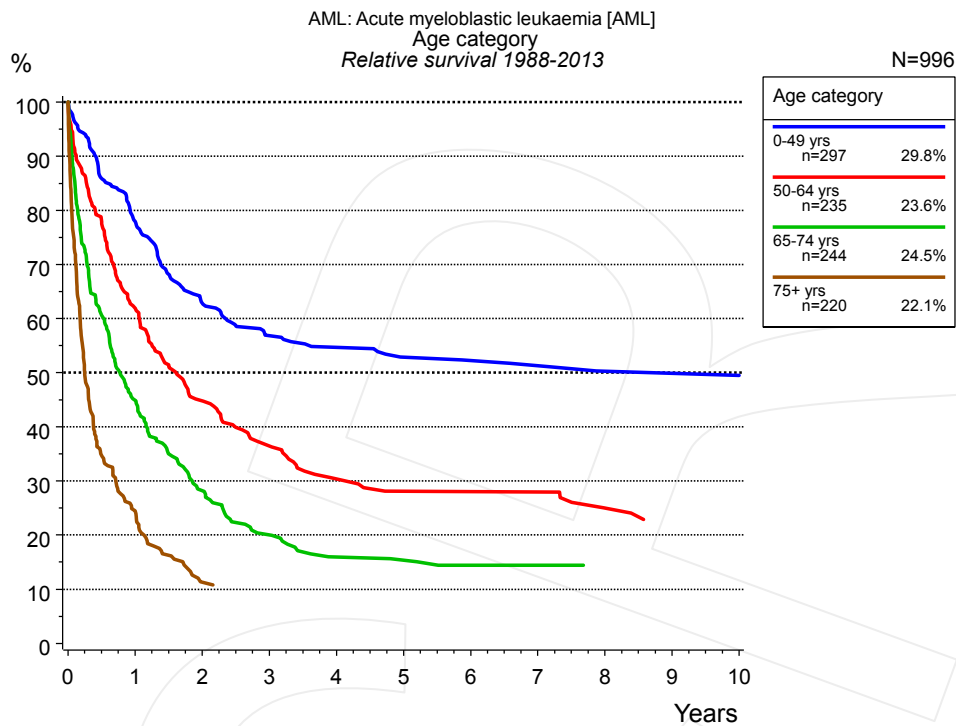


**Figure 2c.** Conditional relative 2 / 5-year survival of patients with acute myelobl. leukemia by gender. For 996 of 996 cases diagnosed between 1988 and 2013 valid data could be obtained for this item.

Years	Gender					
	n	Male		Female		n
		Cond. surv. %	2 yrs	5 yrs	Cond. surv. %	
0	523	38.4	27.2	473	41.2	29.9
1	255	61.2	50.4	253	61.2	51.3
2	168	73.0	69.1	167	77.4	71.0
3	127	83.4	77.8	130	85.2	79.7
4	98	95.3	86.6	103	91.3	84.1
5	82	96.9	86.7	79	97.9	89.3
6	70	94.2	86.4	73	95.2	90.7
7	62	90.9	85.0	66	91.3	89.8
8	46	93.0	86.0	55	95.6	95.2
9	36	94.2		46	98.4	95.3
10	30	93.4		40	97.4	90.2

**Table 2d.** Conditional relative 2 / 5-year survival of patients with acute myelobl. leukemia by gender for period 1988-2013 (N=996).

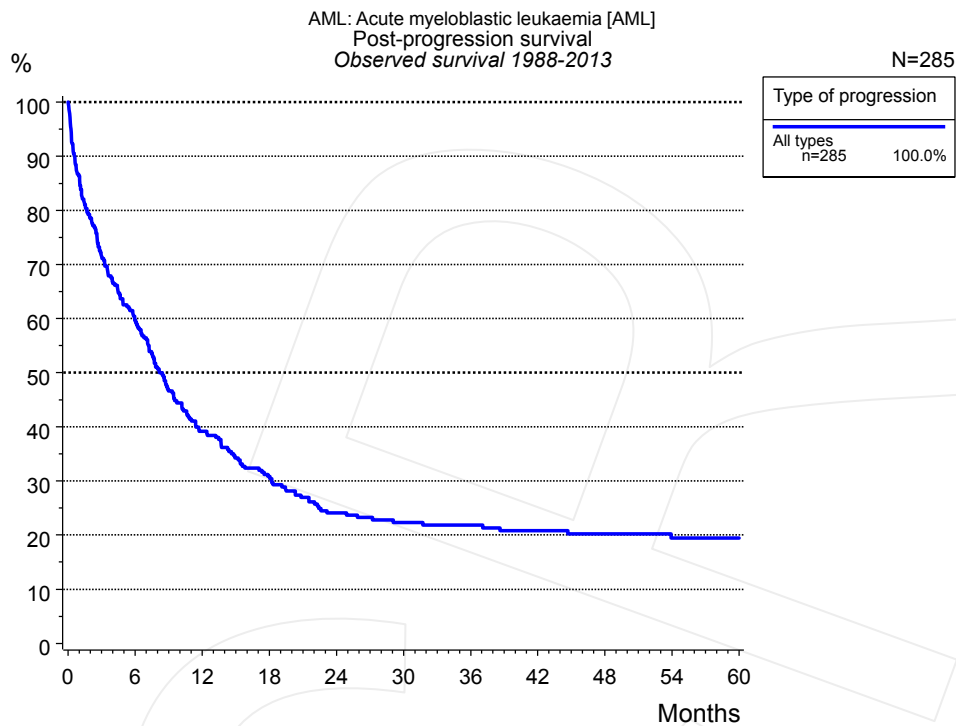
Conditional relative survival rates refer to the relative survival probability, in this case for 2 and 5 years after cancer diagnosis, compared to the age- and sex-matched population (=100%) under the condition of being alive for a certain time period (x-axis in Figure 2a). The results illustrate to what extent the cancer induced mortality of particular subgroups declines in the subsequent years after detection of the malignancy. For instance, according to the presented survival statistics, patients in the subgroup gender="Male", who are alive at least 3 years after cancer diagnosis, the conditional relative 2-year survival rate is 83.4% (n=127).



**Figure 3a.** Relative survival of patients with acute myelobl. leukemia by age category. Included in the evaluation are 996 cases diagnosed between 1988 and 2013.

Years	Age category							
	0-49 yrs n=297		50-64 yrs n=235		65-74 yrs n=244		75+ yrs n=220	
	obs. %	rel. %	obs. %	rel. %	obs. %	rel. %	obs. %	rel. %
0	100.0	100.0	100.0	100.0	100.0	100.0	100.0	100.0
1	78.2	77.9	61.4	61.9	44.2	44.9	23.3	24.5
2	62.9	62.8	44.5	44.8	27.3	28.2	9.9	11.3
3	56.7	56.8	35.9	36.5	19.2	20.0		
4	54.6	54.7	29.7	30.4	14.6	16.0		
5	52.5	52.9	27.0	28.1	14.0	15.4		
6	51.9	52.2	27.0	28.0	12.7	14.5		
7	51.3	51.3	27.0	27.9	12.7	14.4		
8	49.7	50.3	23.3	25.0	11.9	13.9		
9	49.7	49.9	21.1	22.6				
10	49.7	49.5	21.1	21.9				

**Table 3b.** Observed (obs.) and relative (rel.) survival of patients with acute myelobl. leukemia by age category for period 1988-2013 (N=996).



**Figure 5a.** Observed post-progression survival of 285 patients with acute myelobl. leukemia diagnosed between 1988 and 2013 (incl. M1). These 285 patients with documented progression events during their course of disease represent 28.6% of the totally 996 evaluated cases. Patients with cancer relapse documented via death certificates only were excluded (n=372, 37.3%).

Medical record documentation often lacks the linguistic severity to distinguish between local relapse, regional lymph node metastasis and distant spread in solid cancers. Frequently, the statement “not specified” is the only information in registries regarding relapse of the disease. The category “All types” denotes all cases who suffered from at least one relapse during the course of disease (incl. primary M1-status). Although, the real number of relapsed patients is likely to be much higher. The accumulated percentage of patients with local relapse or distant metastasis exceeds the 100% value because patients are potentially considered in more than one subgroup.

Type of progression	
All types n=285	
Months	%
0	100.0
12	39.2
24	24.1
36	21.8
48	20.2
60	19.4

**Table 5b.** Observed post-progression survival of patients with acute myelobl. leukemia for period 1988-2013 (N=285).

**Shortcuts**

MCR	Munich Cancer Registry, Germany (Tumorregister München)
NCI	National Cancer Institute, USA
SEER	Surveillance, Epidemiology, and End Results, USA
UICC	Union for International Cancer Control, Geneva
DCO	Death certificate only. The death certificate provides the only notification to the registry.
NA	Not available
NOS	Not otherwise specified
OS	Observed/overall survival (Kaplan-Meier estimate)
RS	Relative survival, compared to the general population, ratio of observed to expected survival (Ederer II method), reflecting excess mortality among cancer patients
AS	Assembled survival chart (observed, expected, relative)
PPS	Post-progression survival, survival since first relapse (Kaplan-Meier estimate)
progression	Date of entry: Date of first locoregional recurrence, distant metastasis, unspecified
	Event: Death of all causes
CS	Conditional survival, survival probability under the condition of surviving a given period of time

**Recommended Citation**

Munich Cancer Registry. Survival AML: Acute myelobl. leukemia [Internet]. 2015 [updated 2015 May 13; cited 2015 Jul 1]. Available from: [http://www.tumorregister-muenchen.de/en/facts/surv/surv\\_C920\\_E.pdf](http://www.tumorregister-muenchen.de/en/facts/surv/surv_C920_E.pdf)

**Copyright**

The content of the public web site provided by the Munich Cancer Registry is available worldwide and free of charge. All documents are free to download, utilize, copy, print-out and distribute, providing that the MCR is referenced.

**Disclaimer**

The Munich Cancer Registry reserves the right to not be responsible for the topicality, correctness, completeness or quality of the information provided. Liability claims regarding damage caused by the use of any information provided, including any kind of information which is incomplete or incorrect, will therefore be rejected.

**Index of figures and tables**

Fig./Tbl.		Page
1a	Relative survival by period of diagnosis (chart)	2
1b	Survival by period of diagnosis (table)	2
2a	Survival by gender (chart)	3
2b	Survival by gender (table)	3
2c	Conditional survival by gender (chart)	4
2d	Conditional survival by gender (table)	4
3a	Relative survival by age category (chart)	5
3b	Survival by age category (table)	5
5a	Observed post-progression survival (chart)	6
5b	Observed post-progression survival (table)	6