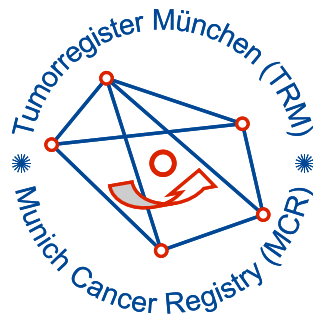


Munich Cancer Registry



- ▶ Baseline statistics
- ▶ Selection Matrix
- ▶ Homepage
- ▶ *Deutsch*

Munich Cancer Registry at Munich Cancer Center
Marchioninstr. 15
Munich, 81377
Germany

<http://www.tumorregister-muenchen.de/en>

Cancer statistics: Survival

D05: Breast cancer i.s. (women)

Year of diagnosis	1988-2013
Patients	5,173
Diseases	5,269
Cases evaluated	2,520
Creation date	05/13/2015
Export date	12/30/2014
Population (females)	2.36 m



http://www.tumorregister-muenchen.de/en/facts/surv/surv_D05f_E.pdf

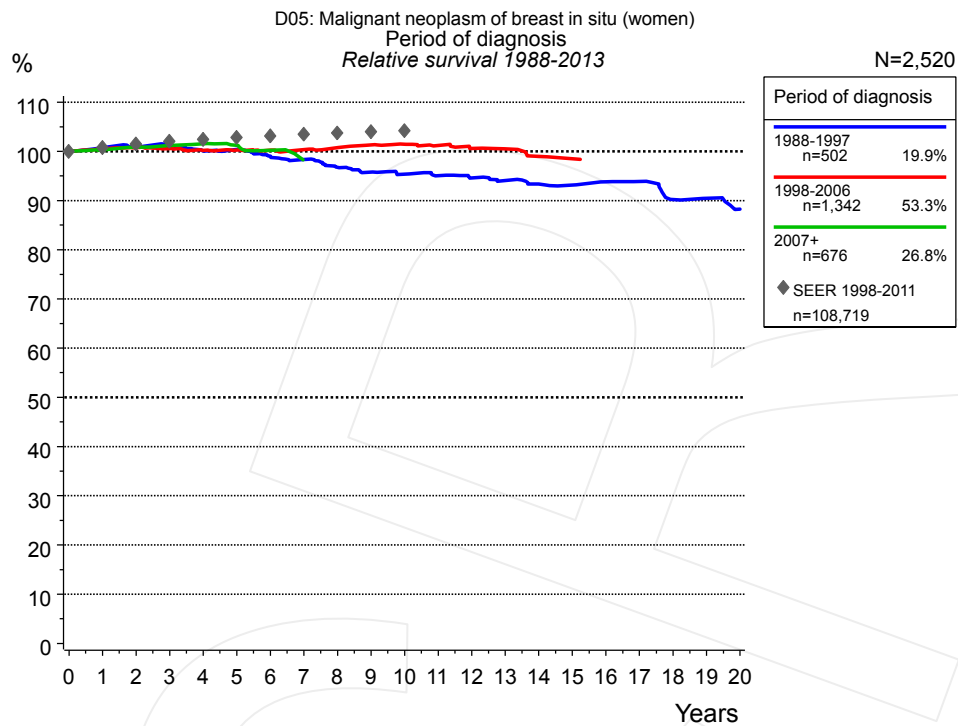


Figure 1a. Relative survival of patients with breast cancer i.s. (women) by period of diagnosis. Included in the evaluation are 2,520 cases diagnosed between 1988 and 2013.

The survival results of the SEER program (Surveillance, Epidemiology, and End Results) of the American National Cancer Institute (NCI) are summarized as the period of diagnosis from 1998 to 2011, and are represented by gray diamonds in order to facilitate comparisons between MCR and SEER.

The presented survival curves are derived from clinical records with valid follow-up informations, which means that death certificate cases (DCO) cases are omitted from the analysis. With this one restriction, the MCR has provided population-based statistics since 1988, collecting data on all cancer cases in the region of southern Bavaria. Historical data of previous time periods can be heavily selected, therefore, univariate survival comparisons of the presented time periods must be carefully considered. Nonetheless, all calculable survival curves are depicted to facilitate the comparison of long time follow-up analyses of relative survival between particular cancers.

Years	Period of diagnosis					
	1988-1997 n=502		1998-2006 n=1,342		2007+ n=676	
	obs. %	rel. %	obs. %	rel. %	obs. %	rel. %
0	100.0	100.0	100.0	100.0	100.0	100.0
1	99.6	100.7	99.6	100.5	99.4	100.3
2	98.6	101.0	98.9	100.7	99.2	100.9
3	97.2	100.8	97.9	100.6	98.4	101.2
4	95.4	100.1	96.5	100.2	97.9	101.6
5	94.6	100.4	95.6	100.2	96.5	101.2
6	91.9	99.0	94.6	100.2	94.3	100.2
7	90.3	98.3	93.5	100.3		
8	87.9	96.8	92.8	100.7		
9	86.0	95.8	92.0	101.3		
10	84.6	95.4	90.9	101.4		
11	83.2	95.1	89.3	101.2		
12	81.7	94.6	87.4	100.6		
13	80.4	94.1	85.9	100.5		
14	78.6	93.3	83.8	99.0		
15	77.6	93.2	82.8	98.5		
16	76.9	93.8				
17	75.7	93.9				
18	71.5	90.2				
19	70.3	90.5				
20	67.3	88.2				

Table 1b. Observed (obs.) and relative (rel.) survival of patients with breast cancer i.s. (women) by period of diagnosis for period 1988-2013 (N=2,520).

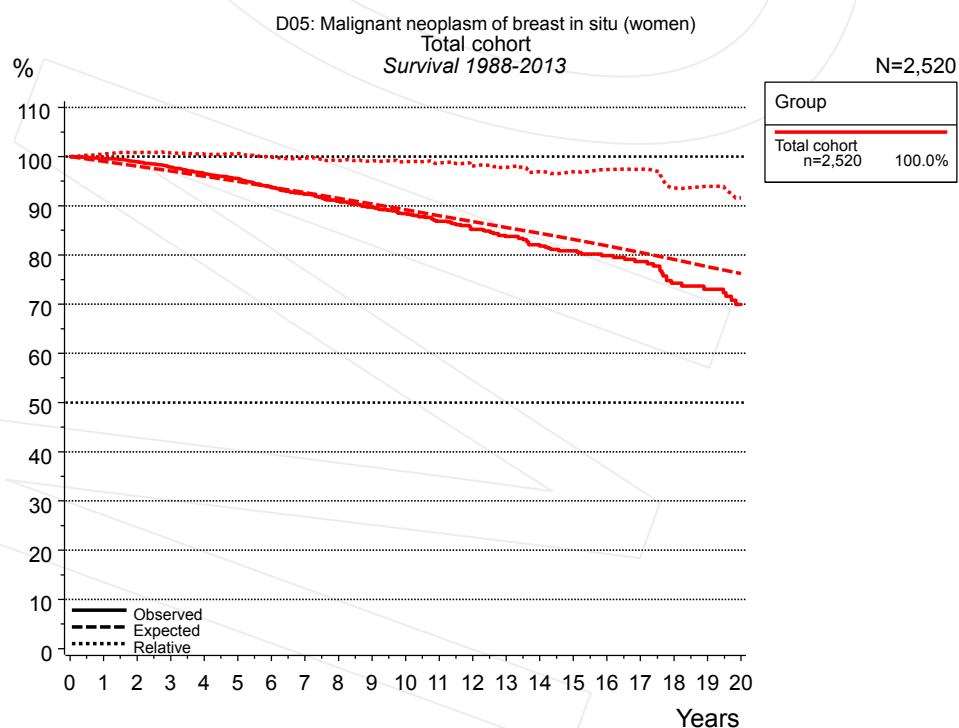


Figure 2a. Observed, expected and relative survival of the total cohort with breast cancer i.s. (women). Included in the evaluation are 2,520 cases diagnosed between 1988 and 2013.

Years	Group	
	Total cohort n=2,520	
	obs. %	rel. %
0	100.0	100.0
1	99.6	100.5
2	98.9	100.9
3	97.8	100.8
4	96.5	100.5
5	95.5	100.6
6	93.8	100.0
7	92.4	99.7
8	91.0	99.3
9	89.7	99.2
10	88.4	99.0
11	86.9	98.7
12	85.2	98.1
13	83.8	97.8
14	81.8	97.0
15	80.8	96.9
16	79.9	97.4
17	78.7	97.5
18	74.3	93.7
19	73.1	93.9
20	70.0	91.6

Table 2b. Observed (obs.) and relative (rel.) survival of the total cohort with breast cancer i.s. (women) for period 1988-2013 (N=2,520).

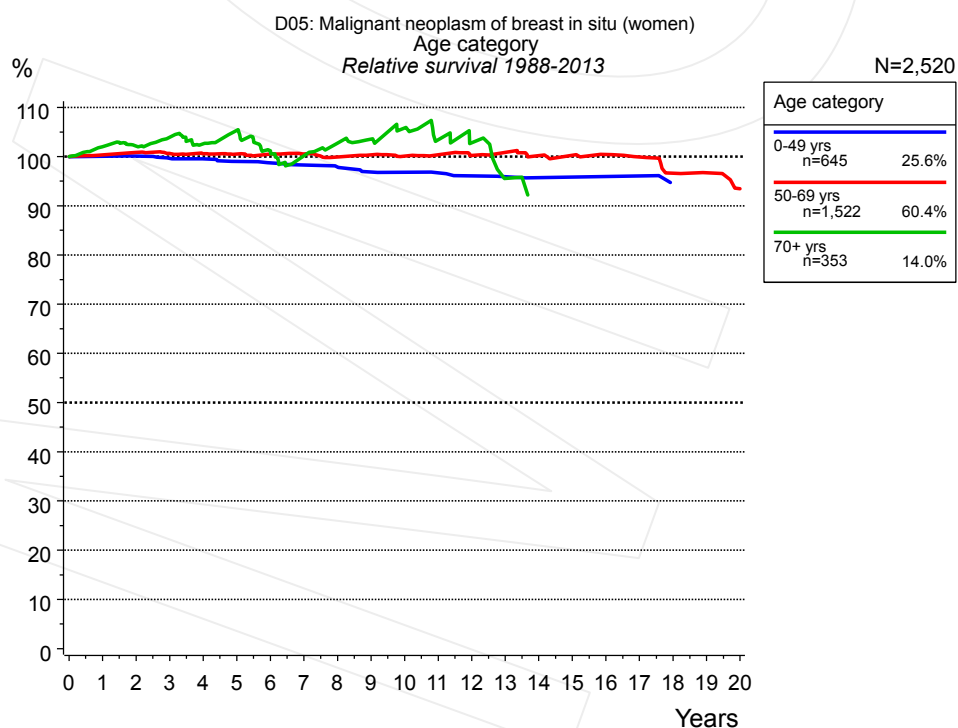


Figure 3a. Relative survival of patients with breast cancer i.s. (women) by age category. Included in the evaluation are 2,520 cases diagnosed between 1988 and 2013.

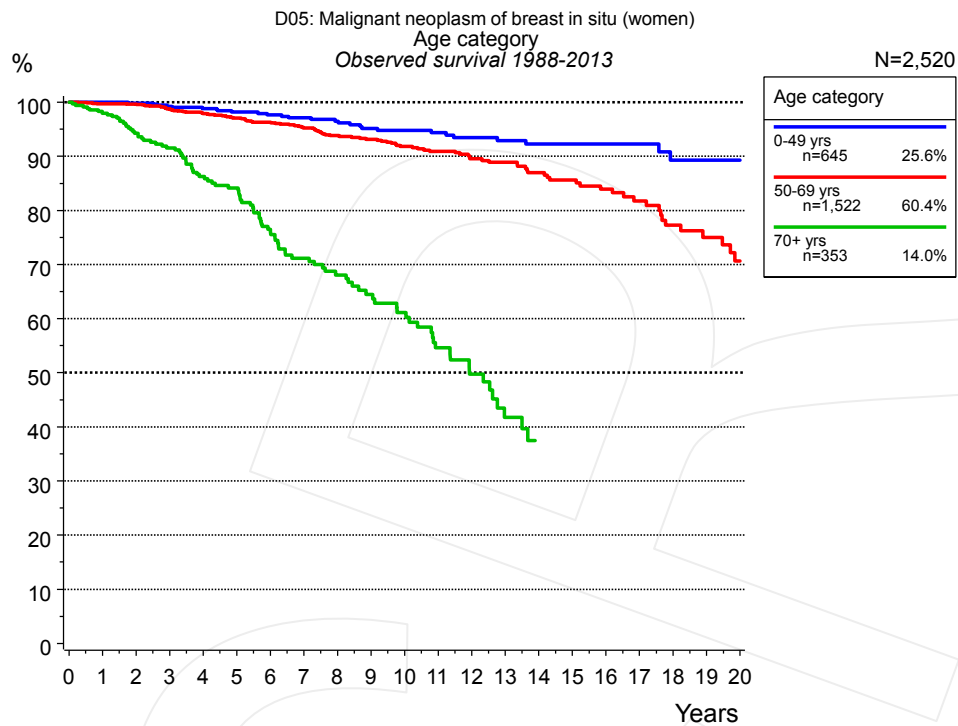


Figure 3b. Observed survival of patients with breast cancer i.s. (women) by age category. Included in the evaluation are 2,520 cases diagnosed between 1988 and 2013.

Years	Age category					
	0-49 yrs n=645		50-69 yrs n=1,522		70+ yrs n=353	
	obs. %	rel. %	obs. %	rel. %	obs. %	rel. %
0	100.0	100.0	100.0	100.0	100.0	100.0
1	100.0	100.1	99.7	100.3	98.0	102.0
2	99.8	100.1	99.6	100.8	94.2	102.1
3	99.3	99.6	98.7	100.6	91.5	104.0
4	98.8	99.5	97.9	100.6	86.3	102.6
5	98.2	99.0	97.1	100.5	84.2	105.4
6	97.7	98.7	96.3	100.5	76.0	101.1
7	97.1	98.3	95.3	100.5	71.2	100.2
8	96.5	97.9	93.8	99.9	68.1	102.7
9	95.2	96.8	93.2	100.3	64.5	103.5
10	94.8	96.8	91.8	100.1	61.1	105.8
11	94.4	96.7	90.9	100.4	54.6	103.4
12	93.5	96.1	89.5	100.2	49.7	102.8
13	92.9	95.9	88.9	100.8	41.7	95.6
14	92.3	95.7	86.9	100.2		
15	92.3	95.8	85.6	100.3		
16	92.3	95.9	83.9	100.4		
17	92.3	96.0	81.7	99.9		
18			77.3	96.6		
19			75.0	96.7		
20			70.6	93.5		

Table 3c. Observed (obs.) and relative (rel.) survival of patients with breast cancer i.s. (women) by age category for period 1988-2013 (N=2,520).

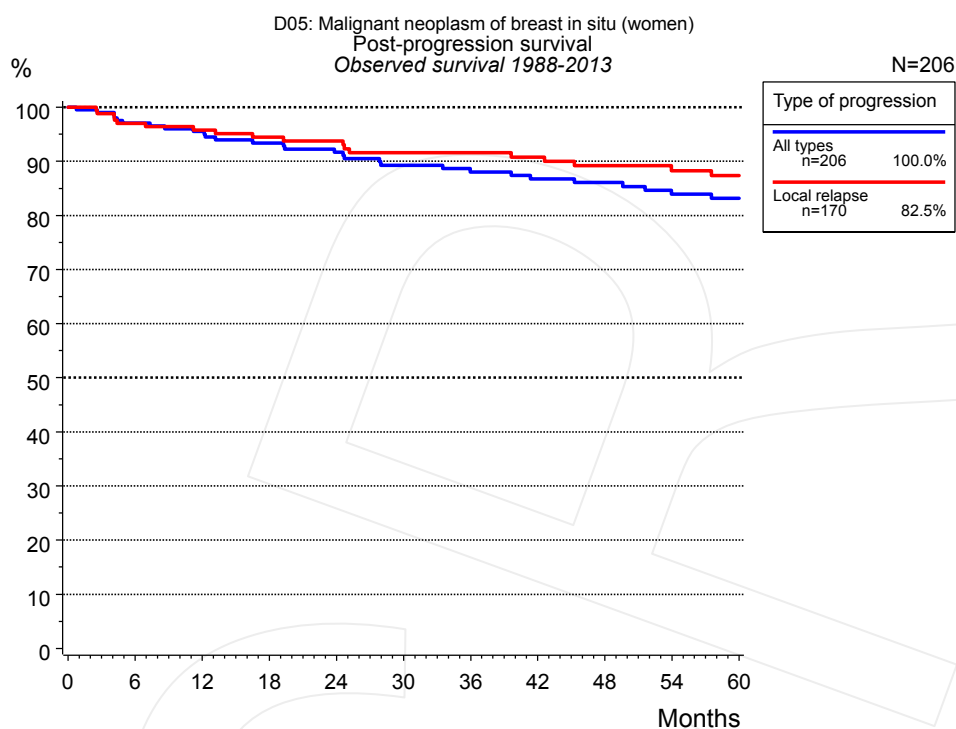


Figure 5a. Observed post-progression survival of 206 patients with breast cancer i.s. (women) diagnosed between 1988 and 2013 (incl. M1). These 206 patients with documented progression events during their course of disease represent 8.2% of the totally 2,520 evaluated cases. Patients with cancer relapse documented via death certificates only were excluded (n=9, 0.4%). Multiple progression types on different sites are included in the evaluation even when not occurring synchronously.

Medical record documentation often lacks the linguistic severity to distinguish between local relapse, regional lymph node metastasis and distant spread in solid cancers. Frequently, the statement “not specified” is the only information in registries regarding relapse of the disease. The category “All types” denotes all cases who suffered from at least one relapse during the course of disease (incl. primary M1-status). Although, the real number of relapsed patients is likely to be much higher. The accumulated percentage of patients with local relapse or distant metastasis exceeds the 100% value because patients are potentially considered in more than one subgroup.

Months	Type of progression	
	All types n=206	Local relapse n=170
	%	%
0	100.0	100.0
12	95.5	95.8
24	91.7	93.8
36	88.0	91.6
48	86.1	89.2
60	83.1	87.4

Table 5b. Observed post-progression survival of patients with breast cancer i.s. (women) for period 1988-2013 (N=206).

Shortcuts

MCR	Munich Cancer Registry, Germany (Tumorregister München)
NCI	National Cancer Institute, USA
SEER	Surveillance, Epidemiology, and End Results, USA
UICC	Union for International Cancer Control, Geneva
DCO	Death certificate only. The death certificate provides the only notification to the registry.
NA	Not available
NOS	Not otherwise specified
OS	Observed/overall survival (Kaplan-Meier estimate)
RS	Relative survival, compared to the general population, ratio of observed to expected survival (Ederer II method), reflecting excess mortality among cancer patients
AS	Assembled survival chart (observed, expected, relative)
PPS	Post-progression survival, survival since first relapse (Kaplan-Meier estimate)
progression	Date of entry: Date of first locoregional recurrence, distant metastasis, unspecified
	Event: Death of all causes
CS	Conditional survival, survival probability under the condition of surviving a given period of time

Recommended Citation

Munich Cancer Registry. Survival D05: Breast cancer i.s. (women) [Internet]. 2015 [updated 2015 May 13; cited 2015 Jul 1]. Available from: http://www.tumorregister-muenchen.de/en/facts/surv/surv_D05f_E.pdf

Copyright

The content of the public web site provided by the Munich Cancer Registry is available worldwide and free of charge. All documents are free to download, utilize, copy, print-out and distribute, providing that the MCR is referenced.

Disclaimer

The Munich Cancer Registry reserves the right to not be responsible for the topicality, correctness, completeness or quality of the information provided. Liability claims regarding damage caused by the use of any information provided, including any kind of information which is incomplete or incorrect, will therefore be rejected.

Index of figures and tables

Fig./Tbl.		Page
1a	Relative survival by period of diagnosis (chart)	2
1b	Survival by period of diagnosis (table)	3
2a	Survival of total cohort (chart)	3
2b	Survival of total cohort (table)	4
3a	Relative survival by age category (chart)	4
3b	Observed survival by age category (chart)	5
3c	Survival by age category (table)	5
5a	Observed post-progression survival (chart)	6
5b	Observed post-progression survival (table)	6