

Munich Cancer Registry



- ▶ Baseline statistics
- ▶ Selection Matrix
- ▶ Homepage
- ▶ *Deutsch*

Munich Cancer Registry at Munich Cancer Center
Marchioninstr. 15
Munich, 81377
Germany

<http://www.tumorregister-muenchen.de/en>

Cancer statistics: Survival

Sarcoma morph.: Sarcoma (morph.)

Year of diagnosis	1988-2013
Patients	11,746
Diseases	11,816
Cases evaluated	6,665
Creation date	05/13/2015
Export date	12/30/2014
Population	4.64 m



http://www.tumorregister-muenchen.de/en/facts/surv/surv_hST__E.pdf

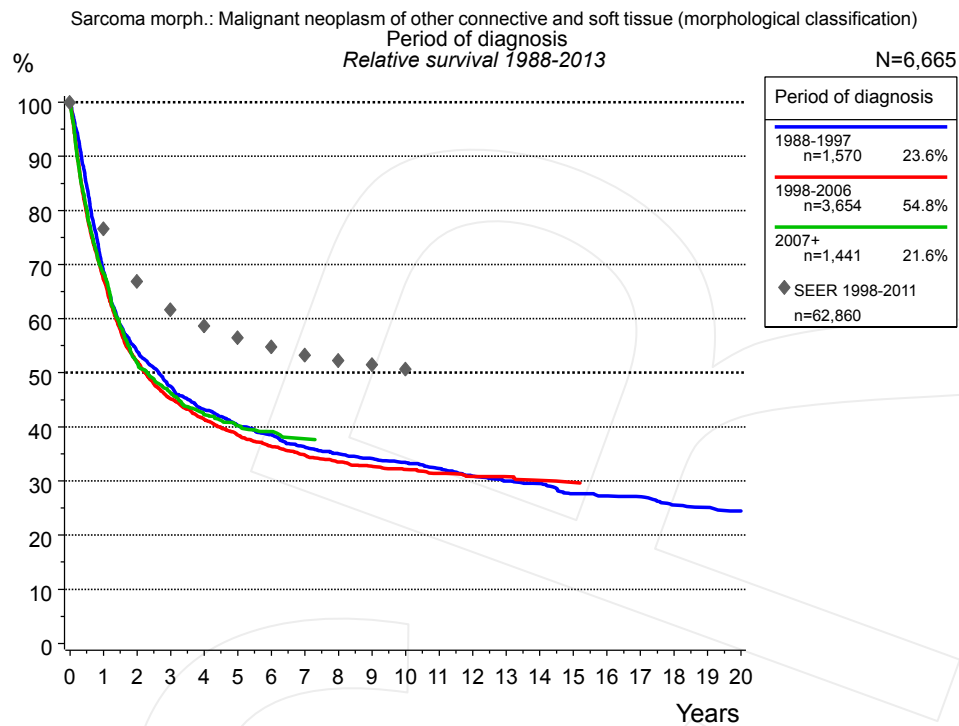


Figure 1a. Relative survival of patients with sarcoma (morph.) by period of diagnosis. Included in the evaluation are 6,665 cases diagnosed between 1988 and 2013.

The survival results of the SEER program (Surveillance, Epidemiology, and End Results) of the American National Cancer Institute (NCI) are summarized as the period of diagnosis from 1998 to 2011, and are represented by gray diamonds in order to facilitate comparisons between MCR and SEER.

The presented survival curves are derived from clinical records with valid follow-up informations, which means that death certificate cases (DCO) cases are omitted from the analysis. With this one restriction, the MCR has provided population-based statistics since 1988, collecting data on all cancer cases in the region of southern Bavaria. Historical data of previous time periods can be heavily selected, therefore, univariate survival comparisons of the presented time periods must be carefully considered. Nonetheless, all calculable survival curves are depicted to facilitate the comparison of long time follow-up analyses of relative survival between particular cancers.

Years	Period of diagnosis					
	1988-1997 n=1,570		1998-2006 n=3,654		2007+ n=1,441	
	obs. %	rel. %	obs. %	rel. %	obs. %	rel. %
0	100.0	100.0	100.0	100.0	100.0	100.0
1	67.4	68.6	65.9	67.2	66.9	68.3
2	52.3	53.9	50.3	52.1	50.1	51.8
3	45.4	47.5	43.1	45.2	43.9	46.2
4	40.8	43.2	39.0	41.4	39.6	42.2
5	37.5	40.3	35.7	38.5	37.2	40.2
6	35.4	38.6	33.4	36.4	35.8	39.1
7	33.0	36.3	31.6	34.8	34.5	37.8
8	31.3	35.0	30.0	33.5		
9	30.2	34.2	29.0	32.7		
10	29.1	33.4	28.1	32.2		
11	27.8	32.3	27.1	31.4		
12	26.3	30.9	26.3	30.9		
13	25.2	30.0	26.0	30.8		
14	24.5	29.6	25.1	30.1		
15	22.6	27.7	24.7	29.8		
16	22.1	27.2				
17	21.7	27.1				
18	20.1	25.6				
19	19.6	25.1				
20	18.8	24.5				

Table 1b. Observed (obs.) and relative (rel.) survival of patients with sarcoma (morph.) by period of diagnosis for period 1988-2013 (N=6,665).

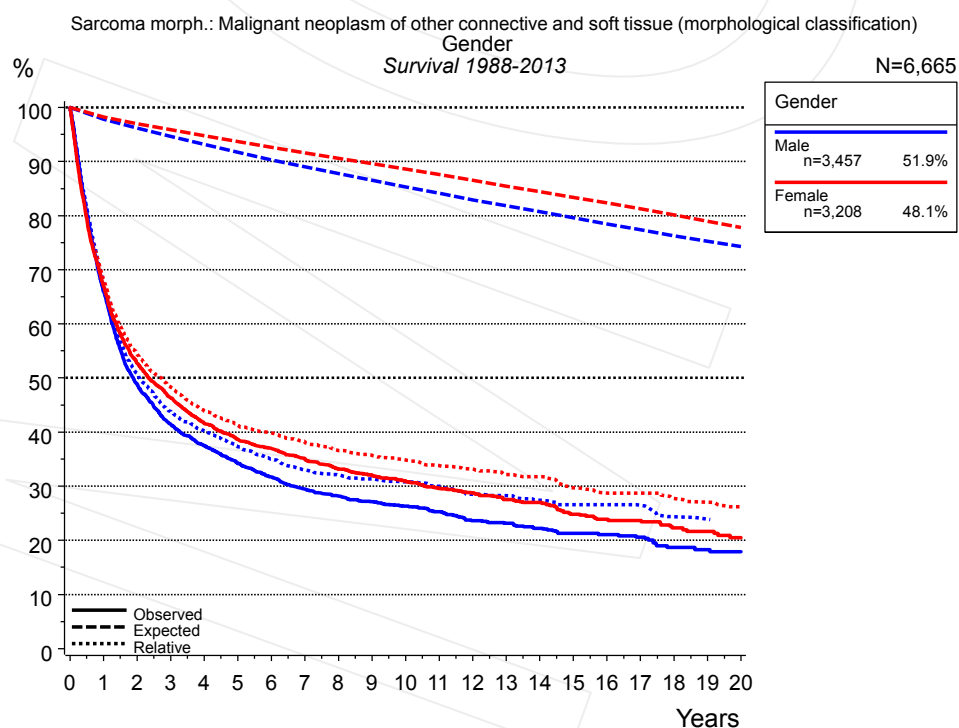


Figure 2a. Survival of patients with sarcoma (morph.) by gender. Included in the evaluation are 6,665 cases diagnosed between 1988 and 2013.

Years	Gender			
	Male n=3,457		Female n=3,208	
	obs. %	rel. %	obs. %	rel. %
0	100.0	100.0	100.0	100.0
1	65.9	67.4	66.9	68.1
2	48.8	50.7	52.8	54.4
3	41.5	43.8	46.3	48.3
4	37.5	40.2	41.6	43.9
5	34.2	37.3	38.7	41.2
6	31.7	35.1	37.0	39.9
7	29.5	33.0	35.1	38.1
8	28.2	32.1	33.2	36.6
9	27.2	31.4	32.0	35.7
10	26.4	30.8	30.9	34.8
11	25.3	30.0	29.6	33.8
12	23.7	28.5	28.7	33.1
13	23.2	28.3	27.5	32.2
14	22.3	27.4	27.0	31.8
15	21.3	26.6	24.8	29.7
16	21.1	26.6	23.9	28.7
17	20.6	26.5	23.7	28.7
18	18.7	24.4	22.3	27.7
19	18.3	23.9	21.7	27.1
20	17.9	23.4	20.5	26.2

Table 2b. Observed (obs.) and relative (rel.) survival of patients with sarcoma (morph.) by gender for period 1988-2013 (N=6,665).

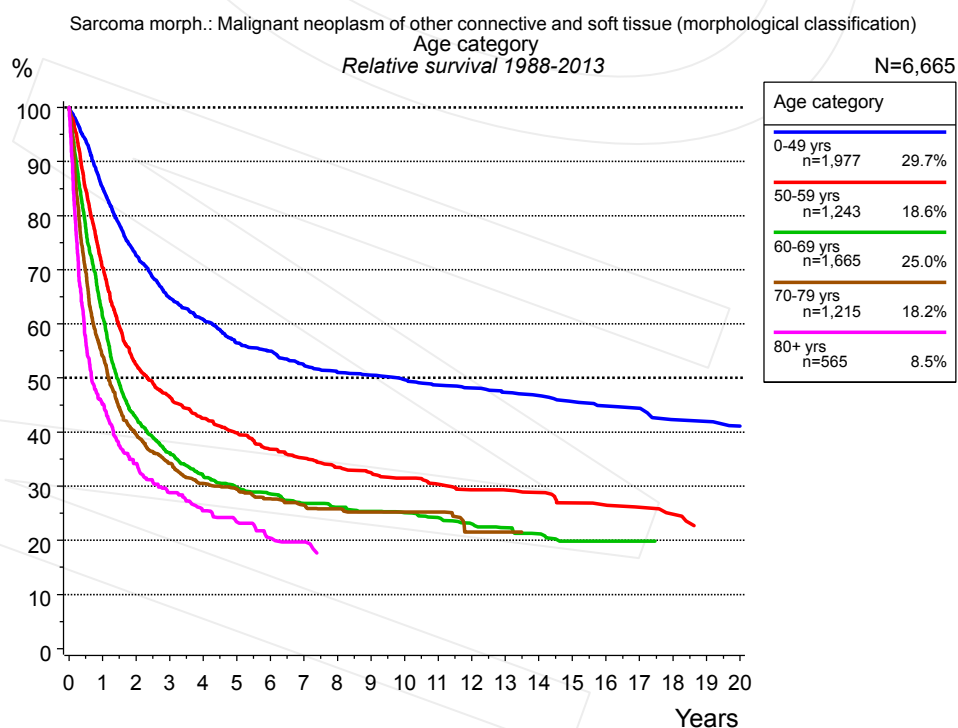


Figure 3a. Relative survival of patients with sarcoma (morph.) by age category. Included in the evaluation are 6,665 cases diagnosed between 1988 and 2013.

Years	Age category									
	0-49 yrs n=1,977		50-59 yrs n=1,243		60-69 yrs n=1,665		70-79 yrs n=1,215		80+ yrs n=565	
	obs. %	rel. %	obs. %	rel. %	obs. %	rel. %	obs. %	rel. %	obs. %	rel. %
0	100.0	100.0	100.0	100.0	100.0	100.0	100.0	100.0	100.0	100.0
1	85.0	85.1	69.9	70.3	60.6	61.5	52.3	54.1	40.7	45.1
2	72.5	72.7	51.9	52.5	41.5	42.6	37.0	39.6	27.8	34.2
3	64.5	64.8	45.7	46.5	34.7	36.2	30.7	34.2	20.6	28.8
4	60.5	60.8	41.5	42.6	30.1	31.9	26.2	30.5	16.0	25.5
5	56.2	56.5	38.6	39.9	27.5	29.7	24.1	29.5	12.8	23.4
6	54.6	55.0	35.4	36.9	26.0	28.6	21.7	27.7	9.8	20.5
7	52.0	52.4	33.5	35.2	24.0	26.8	19.6	26.6	8.7	19.8
8	50.4	51.0	31.6	33.5	22.8	26.1	18.2	25.8		
9	49.9	50.6	30.5	32.6	21.7	25.4	16.8	25.3		
10	49.0	49.7	29.1	31.5	20.8	25.1	15.4	25.2		
11	47.8	48.7	27.7	30.4	19.5	24.2	14.1	25.2		
12	47.2	48.1	26.4	29.4	18.0	23.1	11.1	21.5		
13	46.3	47.4	26.1	29.3	16.9	22.4	10.1	21.5		
14	45.6	46.8	25.5	28.9	15.5	21.2	9.5	21.5		
15	44.4	45.7	23.3	26.9	13.9	19.9				
16	43.5	44.8	22.9	26.5	13.5	19.9				
17	43.1	44.4	21.8	26.1	13.5	19.9				
18	40.6	42.3	20.5	24.9	12.9	19.9				
19	40.6	42.0			12.9	19.9				
20	39.2	41.1								

Table 3b. Observed (obs.) and relative (rel.) survival of patients with sarcoma (morph.) by age category for period 1988-2013 (N=6,665).

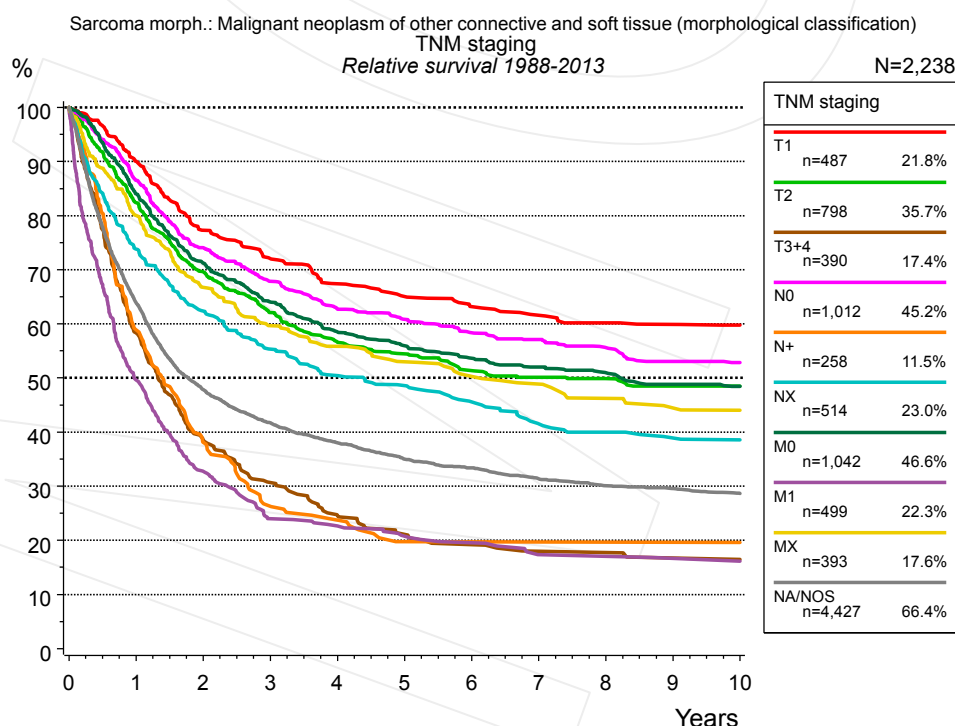


Figure 4a. Relative survival of patients with sarcoma (morph.) by TNM staging. For 2,239 of 6,665 cases diagnosed between 1988 and 2013 valid data could be obtained for this item. For a total of 2,238 cases an evaluable classification was established. The accumulated percentage exceeds the 100% value because patients are potentially considered in more than one subgroup. The grey line represents the subgroup of 4,427 patients with missing values regarding TNM staging (66.4% of 6,665 patients, the percent values of all other categories are related to n=2,238).

TNM staging														
Years	T1 n=487		T2 n=798		T3+4 n=390		N0 n=1,012		N+ n=258		NX n=514		M0 n=1,042	
	obs. %	rel. %	obs. %	rel. %	obs. %	rel. %	obs. %	rel. %	obs. %	rel. %	obs. %	rel. %	obs. %	rel. %
0	100.0	100.0	100.0	100.0	100.0	100.0	100.0	100.0	100.0	100.0	100.0	100.0	100.0	100.0
1	88.1	90.1	80.8	82.4	57.0	58.3	85.1	86.5	57.8	58.9	71.5	73.9	82.4	84.0
2	74.2	77.4	67.2	69.6	37.0	38.5	71.7	74.1	37.1	38.1	59.1	62.4	68.8	71.2
3	68.1	72.1	58.9	62.1	29.1	30.7	64.7	67.9	25.7	26.3	51.1	55.3	61.0	64.1
4	62.7	67.4	53.0	56.6	22.9	24.7	59.1	62.7	22.8	23.8	45.8	50.5	54.9	58.5
5	59.7	65.0	50.2	54.5	19.5	21.1	56.4	60.8	18.6	19.8	43.2	48.6	51.7	56.0
6	57.1	63.2	46.6	51.4	17.6	19.2	53.4	58.4	18.6	19.7	39.6	45.6	48.9	53.7
7	55.0	61.6	44.9	50.1	16.0	18.0	51.6	57.1	18.6	19.7	35.4	41.6	46.8	52.0
8	53.3	60.2	43.9	49.9	16.0	17.8	49.5	55.6	18.6	19.7	33.7	40.0	45.2	51.0
9	52.3	59.9	42.0	48.5	14.7	16.8	46.7	53.1	18.6	19.6	32.1	38.9	42.9	48.9
10	51.3	59.8	41.4	48.5	14.7	16.5	45.8	52.9	18.6	19.6	31.6	38.6	41.8	48.5

TNM staging						
<i>cont'd</i>	M1 n=499		MX n=393		NA/NOS n=4,427	
Years	obs. %	rel. %	obs. %	rel. %	obs. %	rel. %
0	100.0	100.0	100.0	100.0	100.0	100.0
1	48.7	49.6	77.9	80.0	62.7	63.9
2	31.8	32.8	63.5	66.8	46.3	47.8
3	23.1	24.0	55.6	59.7	39.9	41.7
4	21.9	22.7	51.1	55.9	36.0	38.0
5	19.7	20.8	47.5	53.0	32.8	35.0
6	18.5	19.6	44.1	50.3	30.9	33.4
7	16.0	17.4	42.5	48.9	28.8	31.4
8	16.0	17.0	39.5	46.2	27.1	30.1
9	15.4	16.7	37.3	44.5	26.4	29.6
10	15.4	16.2	36.5	44.0	25.3	28.7

Table 4b. Observed (obs.) and relative (rel.) survival of patients with sarcoma (morph.) by TNM staging for period 1988-2013 (N=5,393).

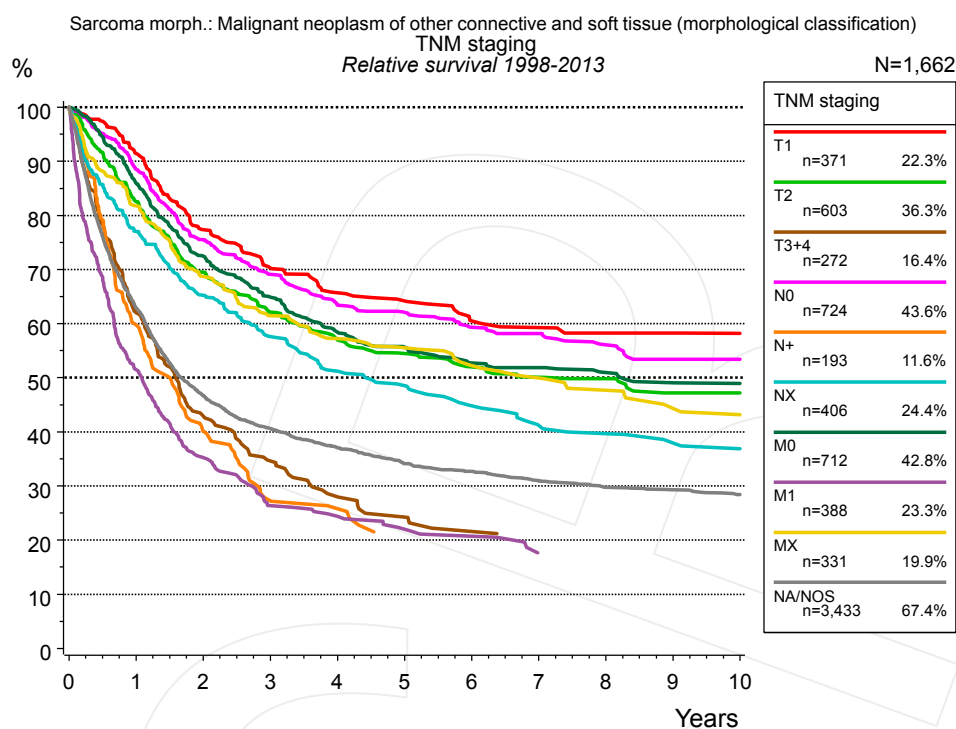


Figure 4c. Relative survival of patients with sarcoma (morph.) by TNM staging. For 1,663 of 5,095 cases diagnosed between 1998 and 2013 valid data could be obtained for this item. For a total of 1,662 cases an evaluable classification was established. The accumulated percentage exceeds the 100% value because patients are potentially considered in more than one subgroup. The grey line represents the subgroup of 3,433 patients with missing values regarding TNM staging (67.4% of 5,095 patients, the percent values of all other categories are related to n=1,662).

TNM staging														
Years	T1 n=371		T2 n=603		T3+4 n=272		N0 n=724		N+ n=193		NX n=406		M0 n=712	
	obs. %	rel. %	obs. %	rel. %	obs. %	rel. %	obs. %	rel. %	obs. %	rel. %	obs. %	rel. %	obs. %	rel. %
0	100.0	100.0	100.0	100.0	100.0	100.0	100.0	100.0	100.0	100.0	100.0	100.0	100.0	100.0
1	89.3	91.4	80.9	82.6	60.5	62.0	87.1	88.5	58.7	59.8	74.7	77.0	84.4	85.9
2	74.0	77.3	67.1	69.5	41.3	42.9	73.2	75.5	39.1	40.2	61.8	65.2	70.1	72.5
3	66.2	70.3	58.9	62.2	32.8	34.6	66.0	69.2	26.9	27.3	53.2	57.6	61.9	64.9
4	60.8	65.7	53.3	57.0	26.5	28.0	59.9	63.4	25.1	25.8	46.5	51.2	55.0	58.4
5	58.8	64.2	50.1	54.5	22.9	24.3	57.7	62.1			43.2	48.5	51.7	55.7
6	54.4	60.5	47.0	52.0	20.1	21.6	54.4	59.3			38.9	44.8	48.4	52.8
7	53.0	59.3	44.8	50.1	19.0	20.7	53.1	58.2			35.2	41.2	47.4	51.9
8	51.2	58.3	44.0	49.9	19.0	20.0	50.3	56.1			33.7	39.7	45.7	51.0
9	51.2	58.3	40.6	47.2			47.5	53.5			31.7	38.0	43.9	49.1
10	50.1	58.2	40.6	47.2			47.5	53.5			30.5	36.9	43.3	49.0

cont'd	TNM staging					
	M1 n=388		MX n=331		NA/NOS n=3,433	
	obs. %	rel. %	obs. %	rel. %	obs. %	rel. %
Years						
0	100.0	100.0	100.0	100.0	100.0	100.0
1	50.6	51.5	79.6	81.8	61.8	63.0
2	34.1	35.3	65.6	68.7	45.2	46.7
3	25.3	26.4	57.3	61.4	38.8	40.6
4	23.6	24.4	52.6	57.2	35.0	37.1
5	21.0	22.0	50.0	55.5	31.8	34.1
6	19.8	20.7	46.0	52.2	30.1	32.7
7			43.8	50.0	28.3	31.0
8			41.1	47.7	26.8	29.8
9			37.6	44.4	26.1	29.3
10			36.2	43.2	25.0	28.4

Table 4d. Observed (obs.) and relative (rel.) survival of patients with sarcoma (morph.) by TNM staging for period 1998-2013 (N=4,000).

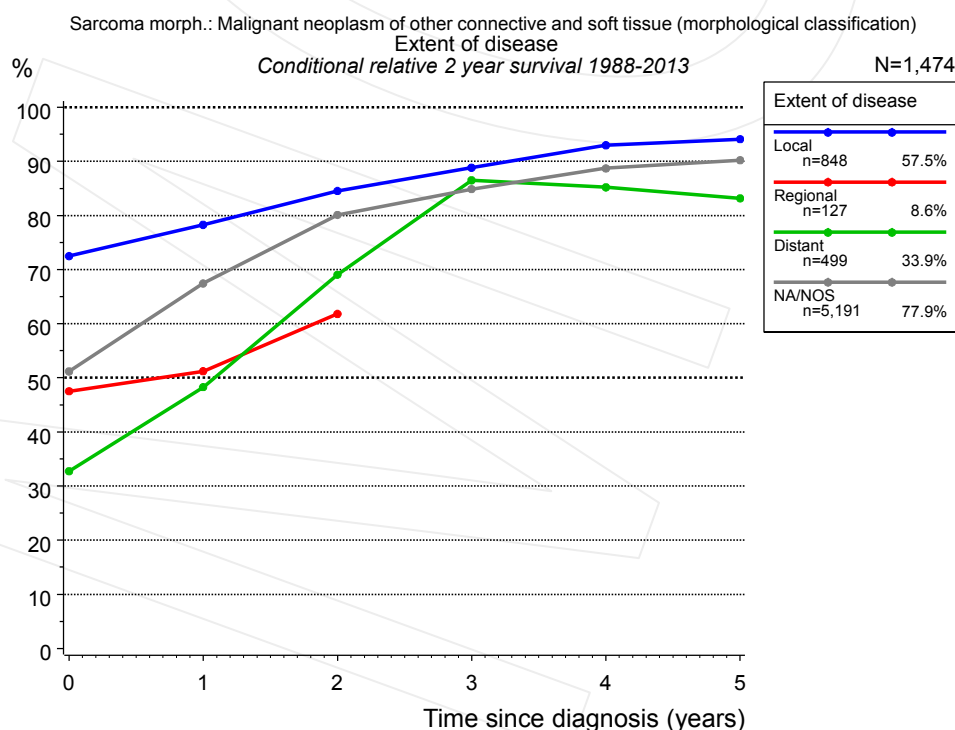


Figure 4e. Conditional relative 2-year survival of patients with sarcoma (morph.) by extent of disease. For 2,239 of 6,665 cases diagnosed between 1988 and 2013 valid data could be obtained for this item. For a total of 1,474 cases an evaluable classification was established. The grey line represents the subgroup of 5,191 patients with missing values regarding extent of disease (77.9% of 6,665 patients, the percent values of all other categories are related to n=1,474).

Years	Extent of disease							
	Local		Regional		Distant		NA/NOS	
	n	Cond. surv. % 2 yrs	n	Cond. surv. % 2 yrs	n	Cond. surv. % 2 yrs	n	Cond. surv. % 2 yrs
0	848	72.5	127	47.5	499	32.8	5,191	51.2
1	679	78.3	78	51.2	231	48.3	3,213	67.5
2	521	84.5	47	61.8	135	69.1	2,273	80.1
3	431	88.8			82	86.5	1,768	84.9
4	351	93.0			67	85.2	1,415	88.7
5	300	94.1			52	83.2	1,143	90.2

Table 4f. Conditional relative 2-year survival of patients with sarcoma (morph.) by extent of disease for period 1988-2013 (N=1,474).

Conditional relative survival rates refer to the relative survival probability, in this case for 2 years after cancer diagnosis, compared to the age- and sex-matched population (=100%) under the condition of being alive for a certain time period (x-axis in Figure 4c). The results illustrate to what extent the cancer induced mortality of particular subgroups declines in the subsequent years after detection of the malignancy. For instance, according to the presented survival statistics, patients in the subgroup extent of disease="Local", who are alive at least 3 years after cancer diagnosis, the conditional relative 2-year survival rate is 88.8% (n=431).

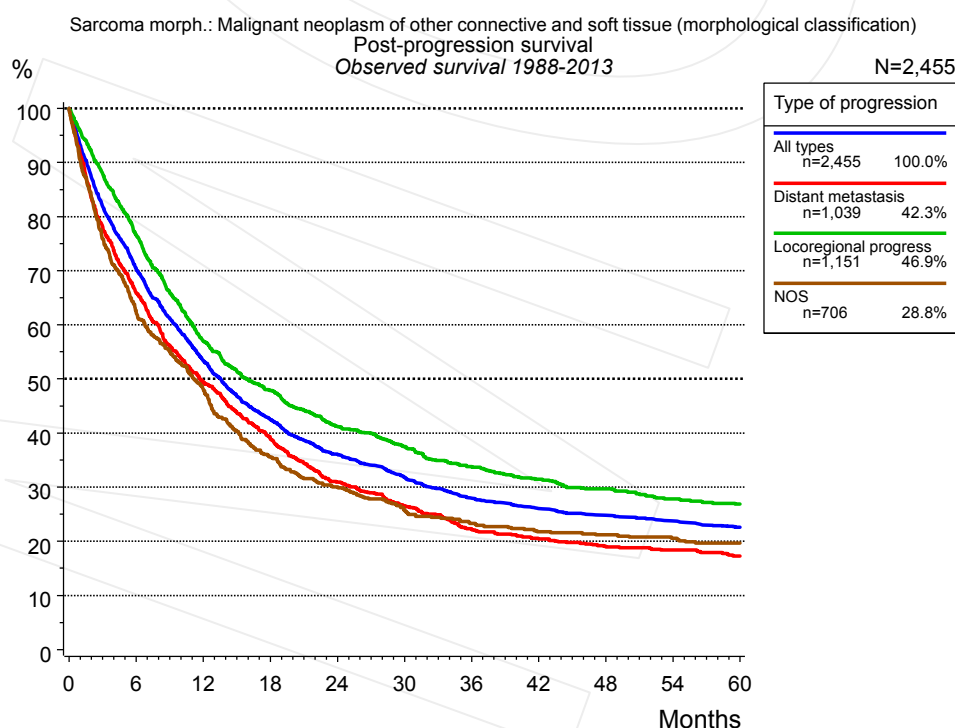


Figure 5a. Observed post-progression survival of 2,455 patients with sarcoma (morph.) diagnosed between 1988 and 2013 (incl. M1). These 2,455 patients with documented progression events during their course of disease represent 36.8% of the totally 6,665 evaluated cases. Patients with cancer relapse documented via death certificates only were excluded (n=1,516, 22.7%). Multiple progression types on different sites are included in the evaluation even when not occurring

synchronously. The NOS (not otherwise specified) class is included under the condition, that it is the one and only progression type during the course of disease.

Medical record documentation often lacks the linguistic severity to distinguish between local relapse, regional lymph node metastasis and distant spread in solid cancers. Frequently, the statement "not specified" is the only information in registries regarding relapse of the disease. The category "All types" denotes all cases who suffered from at least one relapse during the course of disease (incl. primary M1-status). Although, the real number of relapsed patients is likely to be much higher. The accumulated percentage of patients with local relapse or distant metastasis exceeds the 100% value because patients are potentially considered in more than one subgroup.

Months	Type of progression			NOS n=706 %
	All types n=2,455 %	Distant metastasis n=1,039 %	Locoregional progress n=1,151 %	
0	100.0	100.0	100.0	100.0
12	53.4	49.4	57.0	48.1
24	36.1	30.9	41.3	30.1
36	27.9	22.2	33.8	23.3
48	24.9	19.1	29.7	21.2
60	22.6	17.3	26.9	19.6

Table 5b. Observed post-progression survival of patients with sarcoma (morph.) for period 1988-2013 (N=2,455).

Shortcuts

MCR	Munich Cancer Registry, Germany (Tumorregister München)
NCI	National Cancer Institute, USA
SEER	Surveillance, Epidemiology, and End Results, USA
UICC	Union for International Cancer Control, Geneva
DCO	Death certificate only. The death certificate provides the only notification to the registry.
NA	Not available
NOS	Not otherwise specified
OS	Observed/overall survival (Kaplan-Meier estimate)
RS	Relative survival, compared to the general population, ratio of observed to expected survival (Ederer II method), reflecting excess mortality among cancer patients
AS	Assembled survival chart (observed, expected, relative)
PPS	Post-progression survival, survival since first relapse (Kaplan-Meier estimate)
progression	Date of entry: Date of first locoregional recurrence, distant metastasis, unspecified
	Event: Death of all causes
CS	Conditional survival, survival probability under the condition of surviving a given period of time

Recommended Citation

Munich Cancer Registry. Survival Sarcoma morph.: Sarcoma (morph.) [Internet]. 2015 [updated 2015 May 13; cited 2015 Jul 1]. Available from: http://www.tumorregister-muenchen.de/en/facts/surv/surv_hST__E.pdf

Copyright

The content of the public web site provided by the Munich Cancer Registry is available worldwide and free of charge. All documents are free to download, utilize, copy, print-out and distribute, providing that the MCR is referenced.

Disclaimer

The Munich Cancer Registry reserves the right to not be responsible for the topicality, correctness, completeness or quality of the information provided. Liability claims regarding damage caused by the use of any information provided, including any kind of information which is incomplete or incorrect, will therefore be rejected.

Index of figures and tables

Fig./Tbl.		Page
1a	Relative survival by period of diagnosis (chart)	2
1b	Survival by period of diagnosis (table)	3
2a	Survival by gender (chart)	3
2b	Survival by gender (table)	4
3a	Relative survival by age category (chart)	4
3b	Survival by age category (table)	5
4a	Relative survival by TNM staging 1988+ (chart)	5
4b	Survival by TNM staging 1988+ (table)	6
4c	Relative survival by TNM staging 1998+ (chart)	7
4d	Survival by TNM staging 1998+ (table)	7
4e	Conditional survival by extent of disease (chart)	8
4f	Conditional survival by extent of disease (table)	9
5a	Observed post-progression survival (chart)	9
5b	Observed post-progression survival (table)	10