

# Munich Cancer Registry



- ▶ Incidence and Mortality
- ▶ Selection Matrix
- ▶ Homepage
- ▶ *Deutsch*

## ICD-10 C33, C34: Non-small cell LC

### Survival

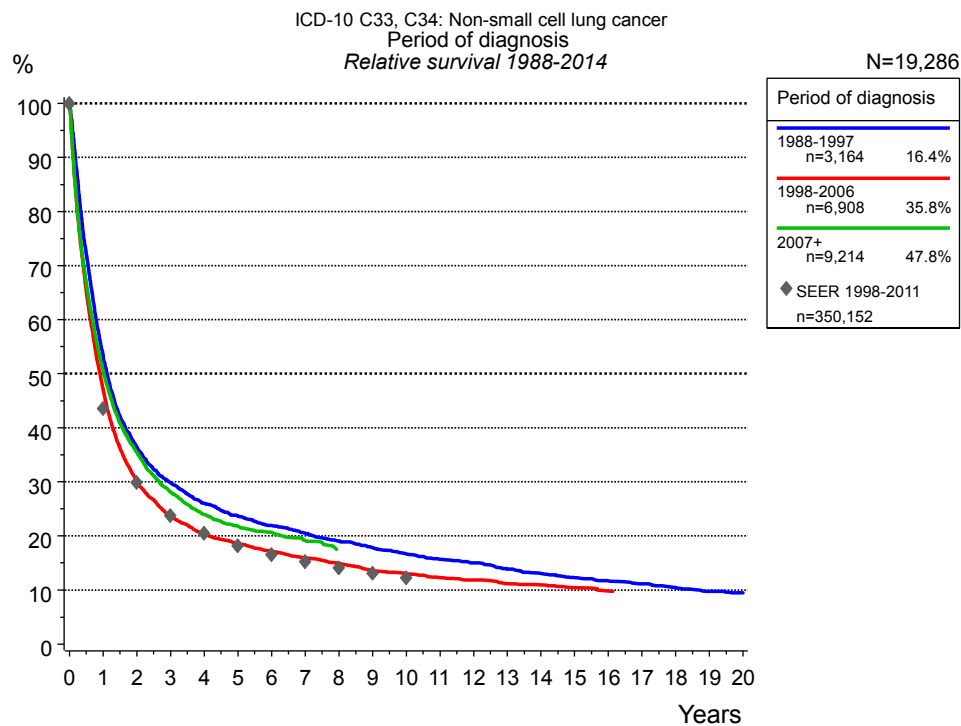
Year of diagnosis	1988-1997	1998-2014
Patients	3,539	20,239
Diseases	3,557	20,433
Cases evaluated	3,166	16,236
Creation date	03/02/2016	
Export date	12/23/2015	
Population	4.64 m	



Munich Cancer Registry at Munich Cancer Center  
Marchioninstr. 15  
Munich, 81377  
Germany

<http://www.tumorregister-muenchen.de/en>

[http://www.tumorregister-muenchen.de/en/facts/surv/sC34n\\_E-ICD-10-C33-C34-Non-small-cell-LC-survival.pdf](http://www.tumorregister-muenchen.de/en/facts/surv/sC34n_E-ICD-10-C33-C34-Non-small-cell-LC-survival.pdf)



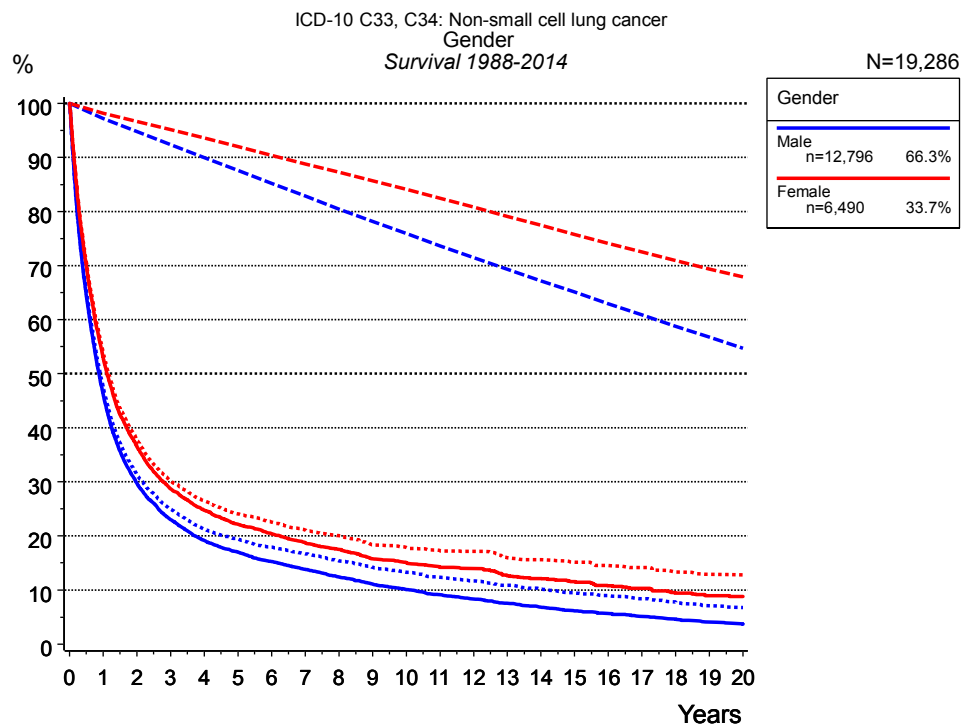
**Figure 1a.** Relative survival of patients with non-small cell LC by period of diagnosis. Included in the evaluation are 19,286 cases diagnosed between 1988 and 2014.

The survival results of the SEER program (Surveillance, Epidemiology, and End Results) of the American National Cancer Institute (NCI) are summarized as the period of diagnosis from 1998 to 2011, and are represented by gray diamonds in order to facilitate comparisons between MCR and SEER.

The presented survival curves are derived from clinical records with valid follow-up informations, which means that death certificate cases (DCO) cases are omitted from the analysis. With this one restriction, the MCR has provided population-based statistics since 1998, collecting data on all cancer cases in the region of southern Bavaria. Historical data of previous time periods can be heavily selected, therefore, univariate survival comparisons of the presented time periods must be carefully considered. Nonetheless, all calculable survival curves are depicted to facilitate the comparison of long time follow-up analyses of relative survival between particular cancers.

Years	Period of diagnosis					
	1988-1997 n=3,164		1998-2006 n=6,908		2007+ n=9,214	
	obs. %	rel. %	obs. %	rel. %	obs. %	rel. %
0	100.0	100.0	100.0	100.0	100.0	100.0
1	51.9	53.2	45.8	47.0	49.3	50.5
2	34.8	36.5	28.6	29.9	33.9	35.4
3	27.8	29.8	22.0	23.6	26.3	28.1
4	23.7	26.0	18.6	20.4	21.9	24.0
5	21.0	23.7	16.7	18.7	19.4	21.8
6	19.1	21.9	14.9	17.1	18.0	20.7
7	17.4	20.5	13.6	16.0	16.3	19.2
8	15.9	19.1	12.4	14.9		
9	14.5	17.9	11.0	13.5		
10	13.2	16.7	10.3	13.0		
11	12.1	15.7	9.5	12.3		
12	11.3	15.1	9.0	11.9		
13	10.2	13.9	8.2	11.2		
14	9.3	13.1	7.8	10.9		
15	8.6	12.3	7.2	10.4		
16	7.9	11.7	6.7	9.8		
17	7.4	11.2				
18	6.7	10.5				
19	6.1	9.7				
20	5.7	9.5				

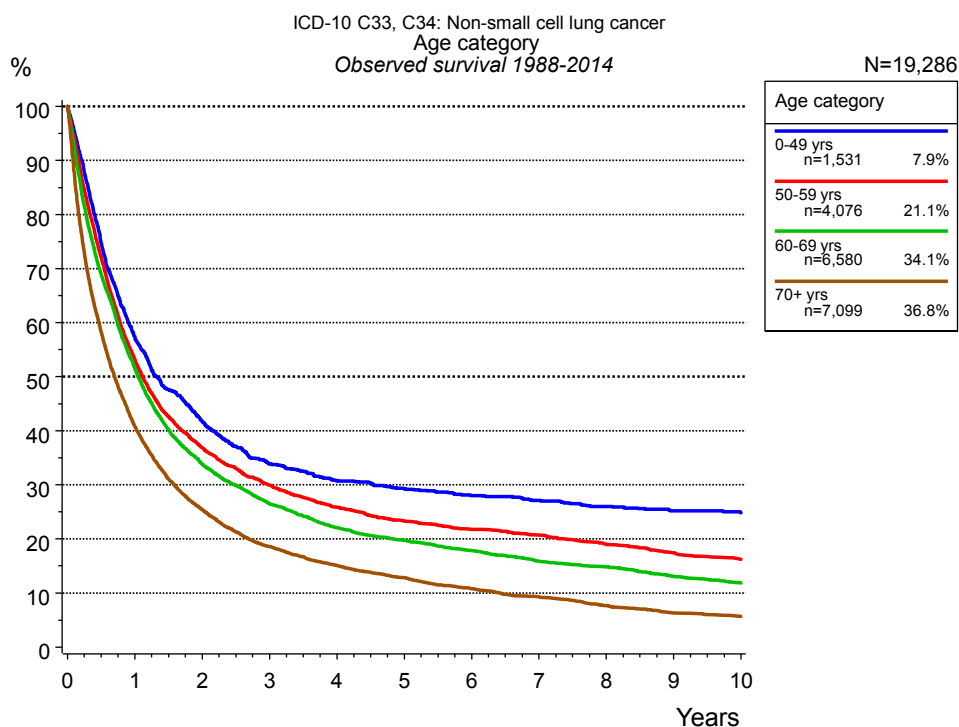
**Table 1b.** Observed (obs.) and relative (rel.) survival of patients with non-small cell LC by period of diagnosis for period 1988-2014 (N=19,286).



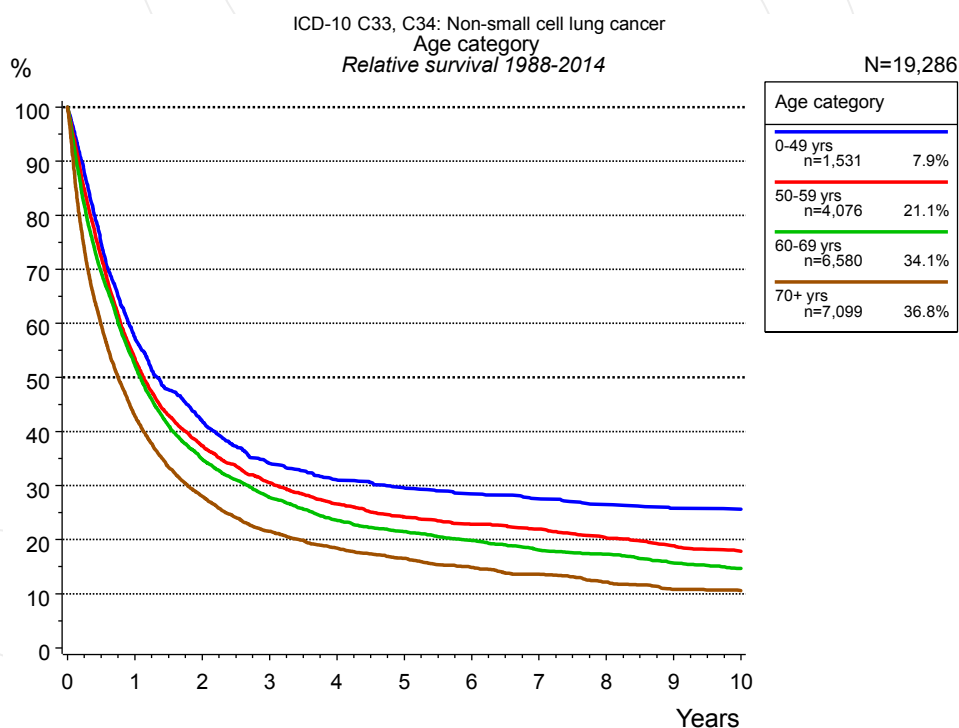
**Figure 2a.** Survival of patients with non-small cell LC by gender. Included in the evaluation are 19,286 cases diagnosed between 1988 and 2014.

Years	Gender			
	Male n=12,796		Female n=6,490	
	obs. %	rel. %	obs. %	rel. %
0	100.0	100.0	100.0	100.0
1	46.2	47.5	52.9	53.8
2	29.8	31.4	36.5	37.7
3	23.0	24.9	28.7	30.2
4	19.2	21.3	24.8	26.5
5	17.0	19.4	22.1	24.1
6	15.2	17.9	20.4	22.6
7	13.8	16.7	18.7	21.1
8	12.4	15.4	17.5	20.0
9	11.1	14.2	15.7	18.4
10	10.1	13.3	15.1	17.9
11	9.1	12.3	14.2	17.3
12	8.4	11.7	14.0	17.1
13	7.5	10.9	12.6	16.0
14	6.8	10.1	12.2	15.6
15	6.1	9.4	11.6	15.1
16	5.7	9.0	10.8	14.5
17	5.1	8.4	10.3	14.1
18	4.7	7.8	9.4	13.3
19	4.0	7.1	9.0	12.9
20	3.7	6.8	8.8	12.8

**Table 2b.** Observed (obs.) and relative (rel.) survival of patients with non-small cell LC by gender for period 1988-2014 (N=19,286).



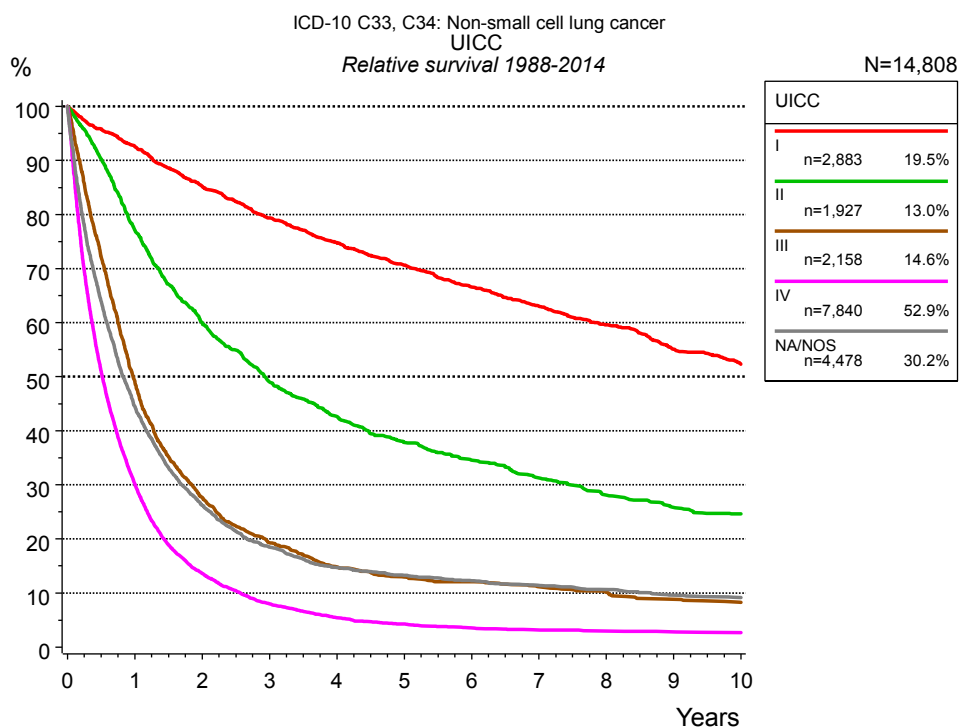
**Figure 3a.** Observed survival of patients with non-small cell LC by age category. Included in the evaluation are 19,286 cases diagnosed between 1988 and 2014.



**Figure 3b.** Relative survival of patients with non-small cell LC by age category. Included in the evaluation are 19,286 cases diagnosed between 1988 and 2014.

Years	Age category							
	0-49 yrs n=1,531		50-59 yrs n=4,076		60-69 yrs n=6,580		70+ yrs n=7,099	
	obs. %	rel. %	obs. %	rel. %	obs. %	rel. %	obs. %	rel. %
0	100.0	100.0	100.0	100.0	100.0	100.0	100.0	100.0
1	57.4	57.5	53.2	53.5	51.6	52.3	40.8	42.9
2	41.8	41.9	36.9	37.3	33.8	34.9	25.4	28.0
3	33.9	34.1	29.9	30.6	26.5	27.8	18.6	21.6
4	30.8	31.1	25.9	26.6	22.1	23.6	15.1	18.4
5	29.3	29.6	23.3	24.2	19.7	21.5	12.8	16.5
6	28.0	28.5	21.8	22.8	17.9	19.9	10.8	14.9
7	27.1	27.6	20.7	21.9	15.9	18.1	9.3	13.6
8	26.0	26.5	19.0	20.3	14.8	17.3	7.7	12.1
9	25.2	25.8	17.4	18.9	13.1	15.7	6.3	10.8
10	24.8	25.6	16.3	17.9	11.8	14.7	5.6	10.5

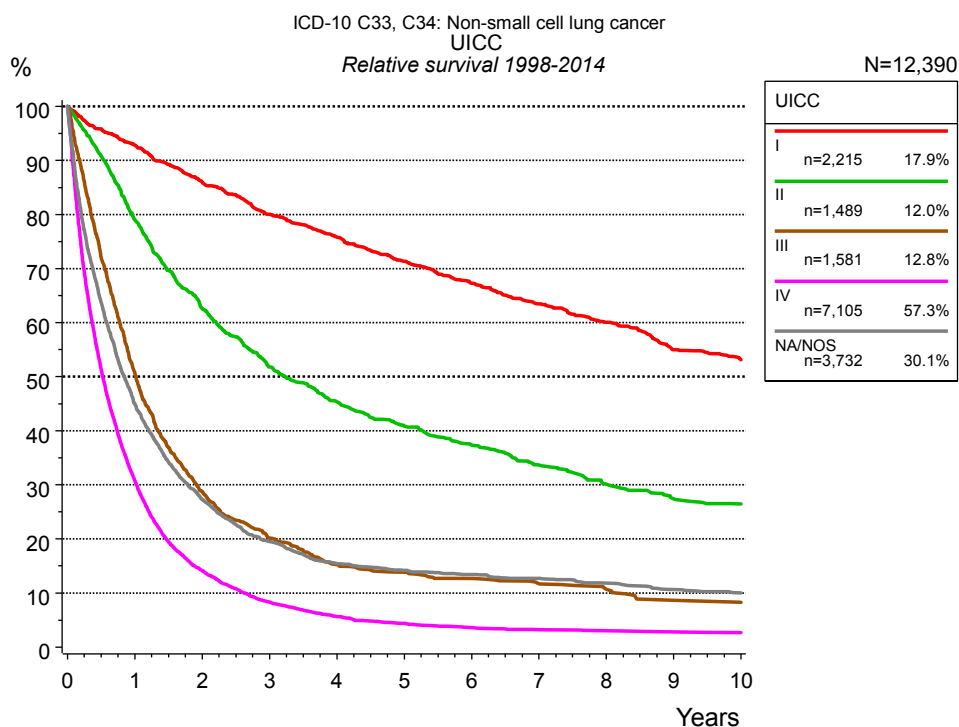
**Table 3c.** Observed (obs.) and relative (rel.) survival of patients with non-small cell LC by age category for period 1988-2014 (N=19,286).



**Figure 4a.** Relative survival of patients with non-small cell LC by UICC. For 17,307 of 19,286 cases diagnosed between 1988 and 2014 valid data could be obtained for this item. For a total of 14,808 cases an evaluable classification was established. The grey line represents the subgroup of 4,478 patients with missing values regarding UICC (23.2% of 19,286 patients, the percent values of all other categories are related to n=14,808).

Years	UICC									
	I n=2,883		II n=1,927		III n=2,158		IV n=7,840		NA/NOS n=4,478	
	obs. %	rel. %	obs. %	rel. %	obs. %	rel. %	obs. %	rel. %	obs. %	rel. %
0	100.0	100.0	100.0	100.0	100.0	100.0	100.0	100.0	100.0	100.0
1	90.7	92.6	75.7	77.1	48.0	49.1	29.4	30.1	43.0	44.5
2	81.8	85.2	57.6	60.0	26.5	27.7	13.1	13.6	24.6	26.2
3	74.6	79.4	46.2	49.0	18.1	19.3	7.6	8.0	16.9	18.5
4	68.8	74.8	39.4	42.6	13.6	14.8	5.0	5.4	13.0	14.7
5	63.5	70.6	34.2	37.9	11.7	13.0	3.9	4.3	11.4	13.3
6	58.4	66.6	30.6	34.6	10.7	12.1	3.2	3.5	10.3	12.3
7	54.0	63.0	27.0	31.3	9.7	11.1	2.8	3.2	9.3	11.4
8	49.8	59.6	23.8	28.1	8.6	10.2	2.6	3.0	8.5	10.7
9	44.9	55.1	21.3	25.8	7.4	8.9	2.4	2.8	7.4	9.6
10	41.5	52.3	19.8	24.6	6.7	8.3	2.3	2.7	7.0	9.2

**Table 4b.** Observed (obs.) and relative (rel.) survival of patients with non-small cell LC by UICC for period 1988-2014 (N=14,808).

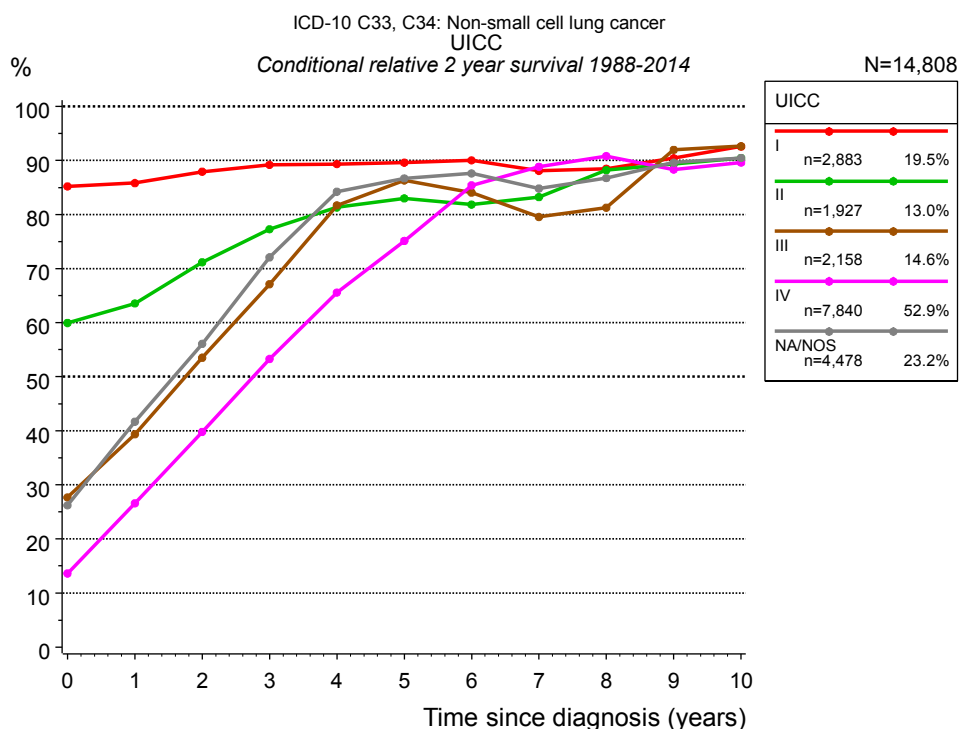


**Figure 4c.** Relative survival of patients with non-small cell LC by UICC. For 14,390 of 16,122 cases diagnosed between 1998 and 2014 valid data could be obtained for this item. For a total of 12,390 cases an evaluable classification was established. The grey line represents the subgroup of 3,732 patients with missing values regarding UICC (23.1% of 16,122 patients, the percent values of all other categories are related to n=12,390).

Years	UICC									
	I n=2,215		II n=1,489		III n=1,581		IV n=7,105		NA/NOS n=3,732	
	obs. %	rel. %	obs. %	rel. %	obs. %	rel. %	obs. %	rel. %	obs. %	rel. %
0	100.0	100.0	100.0	100.0	100.0	100.0	100.0	100.0	100.0	100.0
1	91.0	92.8	77.6	79.1	49.6	50.7	30.0	30.7	43.5	45.0
2	82.7	86.0	60.1	62.6	27.6	28.8	13.5	14.1	25.7	27.3
3	75.3	80.0	48.9	51.8	19.0	20.2	7.9	8.3	17.8	19.5
4	69.8	75.8	42.0	45.4	14.0	15.3	5.2	5.6	13.7	15.5
5	64.2	71.4	37.0	40.9	12.5	13.9	4.0	4.4	12.3	14.2
6	59.1	67.3	33.1	37.4	11.2	12.7	3.2	3.6	11.3	13.4
7	54.4	63.5	29.0	33.7	10.2	11.7	2.9	3.2	10.4	12.7
8	50.2	60.1	25.5	30.1	9.1	10.7	2.6	3.0	9.5	11.9
9	44.8	55.0	22.6	27.4	7.4	8.7	2.4	2.8	8.3	10.6
10	42.3	53.2	21.3	26.5	6.6	8.3	2.3	2.7	7.6	10.0

**Table 4d.** Observed (obs.) and relative (rel.) survival of patients with non-small cell LC by UICC for period 1998-2014 (N=12,390).



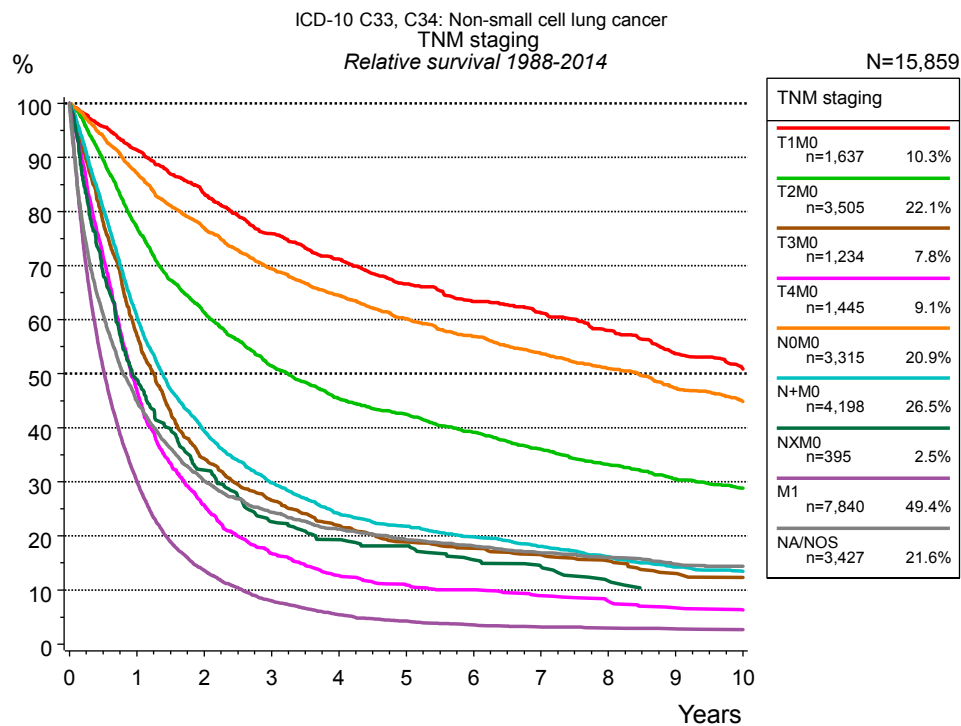


**Figure 4e.** Conditional relative 2-year survival of patients with non-small cell LC by UICC. For 17,307 of 19,286 cases diagnosed between 1988 and 2014 valid data could be obtained for this item. For a total of 14,808 cases an evaluable classification was established. The grey line represents the subgroup of 4,478 patients with missing values regarding UICC (23.2% of 19,286 patients, the percent values of all other categories are related to n=14,808).

Years	UICC									
	I		II		III		IV		NA/NOS	
	n	Cond. surv. % 2 yrs	n	Cond. surv. % 2 yrs	n	Cond. surv. % 2 yrs	n	Cond. surv. % 2 yrs	n	Cond. surv. % 2 yrs
0	2,883	85.2	1,927	60.0	2,158	27.7	7,840	13.6	4,478	26.2
1	2,447	85.8	1,378	63.6	978	39.4	2,170	26.6	1,818	41.7
2	2,062	87.9	975	71.2	504	53.5	846	39.8	969	56.1
3	1,755	89.2	717	77.3	307	67.1	413	53.3	607	72.1
4	1,506	89.3	561	81.3	205	81.7	235	65.6	427	84.2
5	1,265	89.6	450	83.0	157	86.3	152	75.1	347	86.7
6	1,075	90.0	356	81.9	132	84.0	103	85.4	278	87.6
7	902	88.1	282	83.2	103	79.6	72	88.8	219	84.8
8	756	88.5	219	88.2	78	81.3	44	90.8	156	86.7
9	620	90.4	179	89.3	55	92.0	37	88.3	114	89.6
10	538	92.6	153	90.4	47	92.6	30	89.6	91	90.4

**Table 4f.** Conditional relative 2-year survival of patients with non-small cell LC by UICC for period 1988-2014 (N=14,808).

Conditional relative survival rates refer to the relative survival probability, in this case for 2 years after cancer diagnosis, compared to the age- and sex-matched population (=100%) under the condition of being alive for a certain time period (x-axis in Figure 4c). The results illustrate to what extent the cancer induced mortality of particular subgroups declines in the subsequent years after detection of the malignancy. For instance, according to the presented survival statistics, patients in the subgroup UICC="I", who are alive at least 3 years after cancer diagnosis, the conditional relative 2-year survival rate is 89.2% (n=1,755).

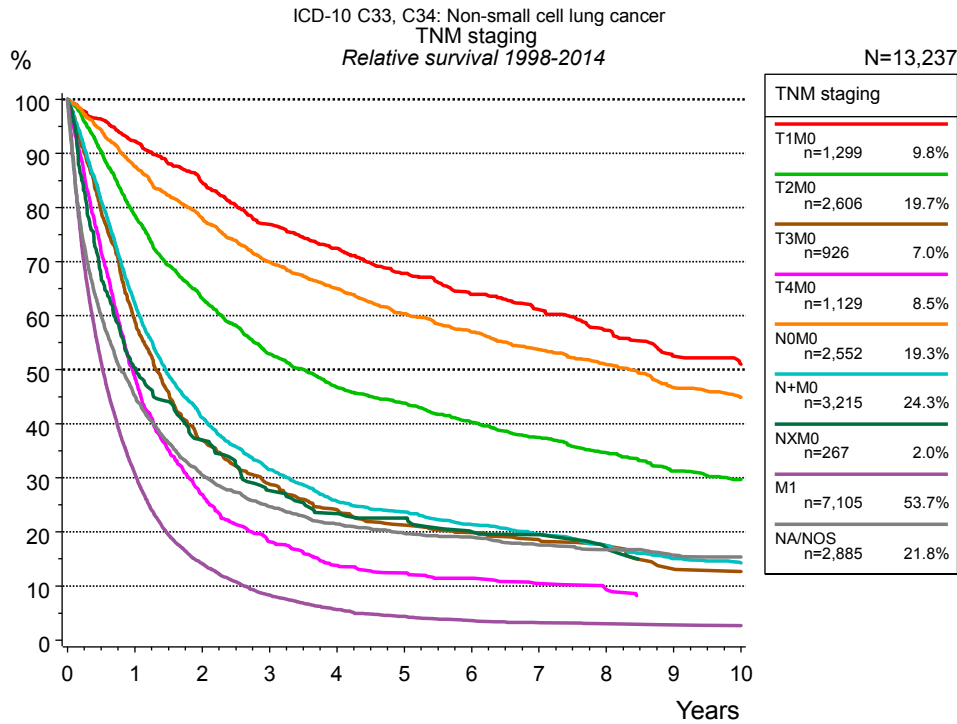


**Figure 4g.** Relative survival of patients with non-small cell LC by TNM staging. For 17,307 of 19,286 cases diagnosed between 1988 and 2014 valid data could be obtained for this item. For a total of 15,859 cases an evaluable classification was established. The accumulated percentage exceeds the 100% value because patients are potentially considered in more than one subgroup. The grey line represents the subgroup of 3,427 patients with missing values regarding TNM staging (17.8 % of 19,286 patients, the percent values of all other categories are related to n=15,859).

TNM staging														
Years	T1M0 n=1,637		T2M0 n=3,505		T3M0 n=1,234		T4M0 n=1,445		N0M0 n=3,315		N+M0 n=4,198		NXM0 n=395	
	obs. %	rel. %	obs. %	rel. %	obs. %	rel. %	obs. %	rel. %	obs. %	rel. %	obs. %	rel. %	obs. %	rel. %
0	100.0	100.0	100.0	100.0	100.0	100.0	100.0	100.0	100.0	100.0	100.0	100.0	100.0	100.0
1	89.5	91.3	75.4	77.2	55.9	57.2	45.9	47.0	85.1	87.1	59.3	60.7	47.6	49.0
2	80.1	83.3	58.5	61.3	32.7	34.3	24.6	25.7	73.6	77.0	37.8	39.4	30.2	32.1
3	71.4	75.9	47.9	51.4	24.8	26.6	15.7	16.8	64.9	69.5	28.0	29.8	20.5	22.6
4	65.6	71.2	41.3	45.4	20.0	21.9	11.7	12.7	58.9	64.5	22.2	24.1	17.1	19.3
5	60.1	66.6	37.7	42.5	17.0	18.9	9.8	10.9	53.7	60.2	19.6	21.8	15.6	18.1
6	56.0	63.3	33.9	39.1	15.7	17.7	8.9	10.0	49.6	56.9	17.5	19.8	12.6	15.6
7	52.9	61.2	30.4	36.0	14.2	16.5	7.7	9.0	45.7	53.7	15.6	18.1	11.3	14.3
8	48.9	58.0	27.3	33.2	13.1	15.4	6.8	8.0	42.3	51.0	13.6	16.1	8.9	11.7
9	44.2	53.7	24.5	30.5	11.0	13.0	5.6	6.7	38.3	47.4	11.7	14.3	7.6	10.1
10	40.9	50.8	22.5	28.8	10.2	12.3	5.1	6.4	35.3	44.9	10.9	13.5		

<i>cont'd</i>	TNM staging			
	M1		NA/NOS	
	n=7,840		n=3,427	
Years	obs. %	rel. %	obs. %	rel. %
0	100.0	100.0	100.0	100.0
1	29.4	30.1	43.5	45.0
2	13.1	13.6	28.5	30.2
3	7.6	8.0	22.5	24.4
4	5.0	5.4	19.1	21.3
5	3.9	4.3	16.9	19.3
6	3.2	3.5	15.5	18.1
7	2.8	3.2	14.1	16.9
8	2.6	3.0	13.0	16.0
9	2.4	2.8	11.7	14.8
10	2.3	2.7	11.2	14.4

**Table 4h.** Observed (obs.) and relative (rel.) survival of patients with non-small cell LC by TNM staging for period 1988-2014 (N=23,569).

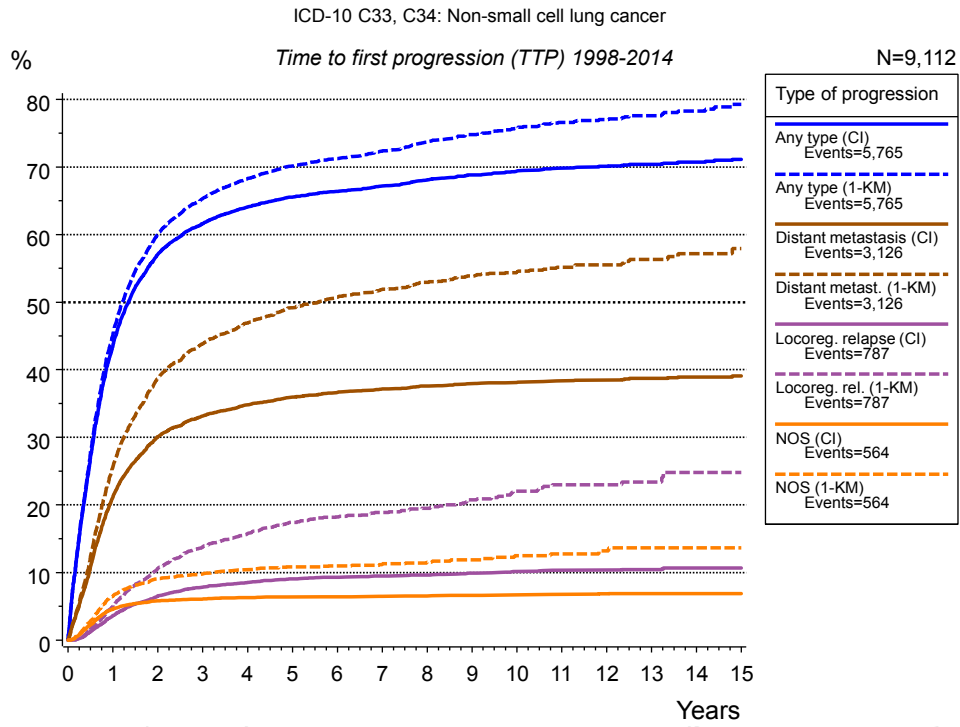


**Figure 4i.** Relative survival of patients with non-small cell LC by TNM staging. For 14,390 of 16,122 cases diagnosed between 1998 and 2014 valid data could be obtained for this item. For a total of 13,237 cases an evaluable classification was established. The accumulated percentage exceeds the 100% value because patients are potentially considered in more than one subgroup. The grey line represents the subgroup of 2,885 patients with missing values regarding TNM staging (17.9 % of 16,122 patients, the percent values of all other categories are related to n=13,237).

TNM staging														
Years	T1M0 n=1,299		T2M0 n=2,606		T3M0 n=926		T4M0 n=1,129		N0M0 n=2,552		N+M0 n=3,215		NXM0 n=267	
	obs. %	rel. %	obs. %	rel. %	obs. %	rel. %	obs. %	rel. %	obs. %	rel. %	obs. %	rel. %	obs. %	rel. %
0	100.0	100.0	100.0	100.0	100.0	100.0	100.0	100.0	100.0	100.0	100.0	100.0	100.0	100.0
1	90.4	92.3	76.8	78.6	57.8	59.1	47.5	48.6	85.7	87.6	60.9	62.3	49.0	50.3
2	81.3	84.7	60.3	63.2	35.4	37.0	25.8	26.9	74.7	78.1	39.4	41.1	34.7	37.0
3	72.3	76.9	49.4	52.9	27.0	28.9	17.1	18.2	65.4	70.0	29.6	31.5	25.2	27.6
4	66.7	72.5	42.6	46.8	22.0	24.1	12.8	13.8	59.4	65.0	23.6	25.7	20.9	23.4
5	61.1	67.8	39.0	43.8	19.2	21.3	11.3	12.4	53.9	60.4	21.3	23.7	19.5	22.5
6	56.3	64.0	34.9	40.3	17.6	19.9	10.1	11.4	49.7	57.0	18.8	21.4	16.4	20.0
7	52.6	61.1	31.7	37.5	16.0	18.5	9.0	10.5	45.7	53.7	16.9	19.6	15.8	19.5
8	48.2	57.3	28.6	34.6	14.9	17.5	8.1	9.4	42.3	51.0	14.7	17.5	13.2	17.1
9	43.0	52.5	25.1	31.3	11.4	13.2	6.8	7.9	37.8	46.7	12.4	15.1	11.1	14.3
10	40.9	51.0	23.3	29.7	10.8	12.7			35.4	44.9	11.5	14.3		

<i>cont'd</i>	TNM staging			
	M1		NA/NOS	
	n=7,105		n=2,885	
Years	obs. %	rel. %	obs. %	rel. %
0	100.0	100.0	100.0	100.0
1	30.0	30.7	43.7	45.1
2	13.5	14.1	28.8	30.5
3	7.9	8.3	22.7	24.7
4	5.2	5.6	19.3	21.5
5	4.0	4.4	17.3	19.7
6	3.2	3.6	16.3	19.0
7	2.9	3.2	14.7	17.6
8	2.6	3.0	13.6	16.7
9	2.4	2.8	12.4	15.7
10	2.3	2.7	11.9	15.4

**Table 4j.** Observed (obs.) and relative (rel.) survival of patients with non-small cell LC by TNM staging for period 1998-2014 (N=19,099).

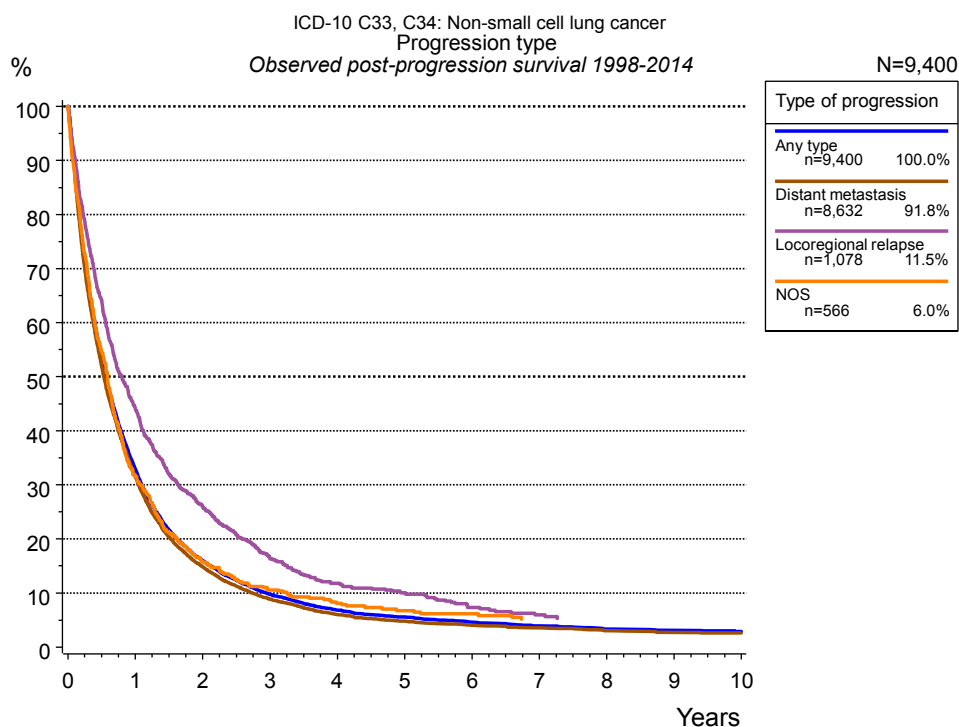


**Figure 5a.** Time to first progression of 9,112 patients with non-small cell LC diagnosed between 1998 and 2014 (M0 only in solid cancers) estimated by cumulative incidence function (CI, solid line) accounting for death as competing risk and by inverse Kaplan-Meier estimate (1-KM, dashed line). The frequency of events may be underestimated due to underreporting.

Years	Type of progression						
	Any type (CI)	Any type (1-KM)	Distant metastasis (CI)	Distant metast. (1-KM)	Locoreg. relapse (CI)	Locoreg. rel. (1-KM)	NOS (CI)
	n=9,112 %	n=9,112 %	n=9,112 %	n=9,112 %	n=9,112 %	n=9,112 %	n=9,112 %
0	0.0	0.0	0.0	0.0	0.0	0.0	0.0
1	43.6	45.2	21.2	25.7	3.6	5.1	4.6
2	57.1	60.0	30.1	38.7	6.5	10.6	5.8
3	61.6	65.3	33.2	43.9	7.8	13.8	6.1
4	64.1	68.3	34.8	46.9	8.5	15.7	6.3
5	65.6	70.2	35.9	49.2	9.1	17.4	6.4
6	66.4	71.2	36.6	50.7	9.3	18.2	6.5
7	67.2	72.3	37.1	51.9	9.5	18.9	6.5
8	68.1	73.7	37.6	52.9	9.6	19.5	6.6
9	68.8	74.8	37.9	53.9	9.9	20.8	6.6
10	69.4	75.8	38.1	54.5	10.2	22.0	6.7
11	69.9	76.6	38.4	55.2	10.4	23.0	6.8
12	70.1	77.0	38.5	55.5	10.4	23.0	6.9
13	70.4	77.6	38.7	56.3	10.4	23.4	6.9
14	70.7	78.3	38.9	57.2	10.6	24.8	6.9
15	71.1	79.3	39.1	57.9	10.6	24.8	6.9

Type of progression	
<i>cont'd</i>	NOS (1-KM) n=9,112
Years	%
0	0.0
1	6.6
2	9.1
3	9.8
4	10.5
5	10.8
6	11.0
7	11.2
8	11.6
9	11.9
10	12.5
11	12.8
12	13.2
13	13.7
14	13.7
15	13.7

**Table 5b.** Time to first progression of patients with non-small cell LC for period 1998-2014 (N=9,112).



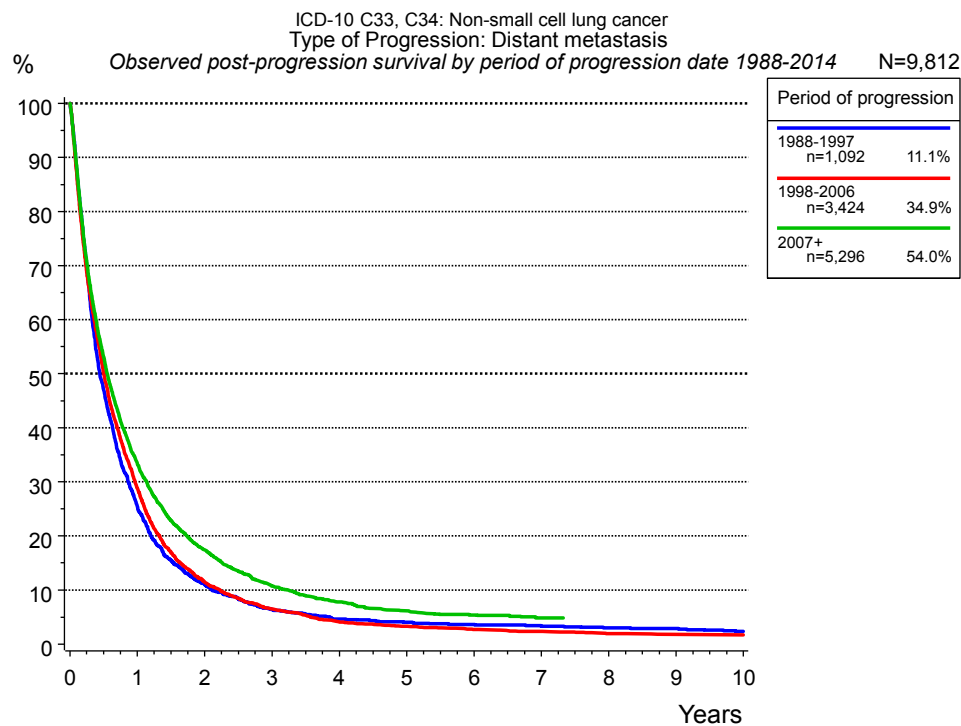
**Figure 5c.** Observed post-progression survival of 9,400 patients with non-small cell LC diagnosed between 1998 and 2014. These 9,400 patients with documented progression events during their course of disease represent 58.6 % of the totally 16,036 evaluated cases (incl. M1, n=6,924, 43.2 %). Patients with cancer relapse documented via death certificates only were excluded (n=3,289, 20.5 %). Multiple progression types on different sites are included in the evaluation even when not occurring synchronously. The NOS (not otherwise specified) class is included under the condition, that it is the one and only progression type during the course of disease.

Medical record documentation often lacks the linguistic severity to distinguish between local relapse, regional lymph node metastasis and distant spread in solid cancers. Frequently, the statement “not specified” is the only information in registries regarding relapse of the disease. The category “Any type” denotes all cases who suffered from at least one relapse during the course of disease (incl. primary M1-status). Although, the real number of relapsed patients is likely to be much higher. The accumulated percentage of patients with local relapse or distant metastasis exceeds the 100% value because patients are potentially considered in more than one subgroup.

Years	Type of progression			
	Any type n=9,400 %	Distant metastasis n=8,632 %	Locoregional relapse n=1,078 %	NOS n=566 %
0	100.0	100.0	100.0	100.0
1	32.9	31.5	44.1	31.5
2	16.0	14.8	26.0	15.7
3	9.7	8.9	16.3	10.6
4	6.8	6.0	11.8	8.1
5	5.5	4.8	10.0	6.8
6	4.6	4.0	7.3	6.2
7	3.9	3.6	6.0	
8	3.3	3.0		
9	3.0	2.7		
10	2.9	2.6		

**Table 5d.** Observed post-progression survival of patients with non-small cell LC for period 1998-2014 (N=9,400).





**Figure 5e.** Observed post-progression (distant metastasis) survival of 9,812 patients with non-small cell LC diagnosed between 1988 and 2014 by period of progression.

Years	Period of progression		
	1988-1997 n=1,092	1998-2006 n=3,424	2007+ n=5,296
	%	%	%
0	100.0	100.0	100.0
1	25.4	28.7	33.4
2	11.0	11.4	17.4
3	6.4	6.5	10.8
4	4.6	4.1	7.8
5	4.0	3.3	6.1
6	3.6	2.7	5.4
7	3.3	2.3	4.9
8	3.0	1.9	4.9
9	2.9	1.8	
10	2.3	1.7	

**Table 5f.** Observed post-progression (distant metastasis) survival of patients with non-small cell LC for period 1988-2014 by period of progression (N=9,812).

## Shortcuts

MCR Munich Cancer Registry, Germany

NCI National Cancer Institute, USA

SEER Surveillance, Epidemiology, and End Results, USA

UICC Union for International Cancer Control, Geneva

DCO Death certificate only Death certificate provides the only notification to the registry.

NA Not available

NOS Not otherwise specified

OS Overall/Observed survival Overall/Observed survival (Kaplan-Meier estimate)

Date of entry: diagnosis  
Event: death from any cause

RS Relative survival Survival compared to “general population”, ratio of observed to expected survival (Ederer II method), reflecting cancer specific survival

AS Assembled survival Assembled chart of observed, expected, relative survival

CS Conditional survival Survival probability under the condition of surviving a given period of time

TTP Time to progression Time to first progression / relapse  
Date of entry: diagnosis  
Event: (progression / relapse): first local-, lymph node recurrence, distant metastasis or unspecified progression

1-KM 1 minus Kaplan-Meier estimator  
 (“inverse” Kaplan-Meier estimator)

CI Cumulative incidence  
Death as competing risk (according to Kalbfleisch und Prentice)

PPS Post-progression survival Survival since first progression / relapse (Kaplan-Meier estimate)  
Date of entry (progression / relapse): first local-, lymph node recurrence, distant metastasis or unspecified progression  
Event: death from any cause

## Recommended Citation

Munich Cancer Registry. Survival ICD-10 C33, C34: Non-small cell LC [Internet]. 2016 [updated 2016 Mar 2; cited 2016 May 1]. Available from: [http://www.tumorregister-muenchen.de/en/facts/surv/sC34n\\_E-ICD-10-C33-C34-Non-small-cell-LC-survival.pdf](http://www.tumorregister-muenchen.de/en/facts/surv/sC34n_E-ICD-10-C33-C34-Non-small-cell-LC-survival.pdf)

## Copyright

The content of the public web site provided by the Munich Cancer Registry is available worldwide and free of charge. All documents are free to download, utilize, copy, print-out and distribute, providing that the MCR is referenced.

## Disclaimer

The Munich Cancer Registry reserves the right to not be responsible for the topicality, correctness, completeness or quality of the information provided. Liability claims regarding damage caused by the use of any information provided, including any kind of information which is incomplete or incorrect, will therefore be rejected.

# Index of figures and tables

Fig./Tbl.	Page
1a Relative survival by period of diagnosis (chart)	2
1b Survival by period of diagnosis (table)	3
2a Survival by gender (chart)	4
2b Survival by gender (table)	4
3a Observed survival by age category (chart)	5
3b Relative survival by age category (chart)	5
3c Survival by age category (table)	6
4a Relative survival by UICC 1988+ (chart)	7
4b Survival by UICC 1988+ (table)	7
4c Relative survival by UICC 1998+ (chart)	8
4d Survival by UICC 1998+ (table)	8
4e Conditional survival by UICC (chart)	9
4f Conditional survival by UICC (table)	9
4g Relative survival by TNM staging 1988+ (chart)	10
4h Survival by TNM staging 1988+ (table)	10
4i Relative survival by TNM staging 1998+ (chart)	12
4j Survival by TNM staging 1998+ (table)	12
5a Time to first progression (chart)	14
5b Time to first progression (table)	14
5c Observed post-progression survival (chart)	16
5d Observed post-progression survival (table)	16
5e Observed post-progression survival by period of progression (chart)	17
5f Observed post-progression survival by period of progression (table)	17