

# Munich Cancer Registry



- ▶ Incidence and Mortality
- ▶ Selection Matrix
- ▶ Homepage
- ▶ *Deutsch*

## ICD-10 C45-C49: Mesoth. and soft tissue ca.

### Survival

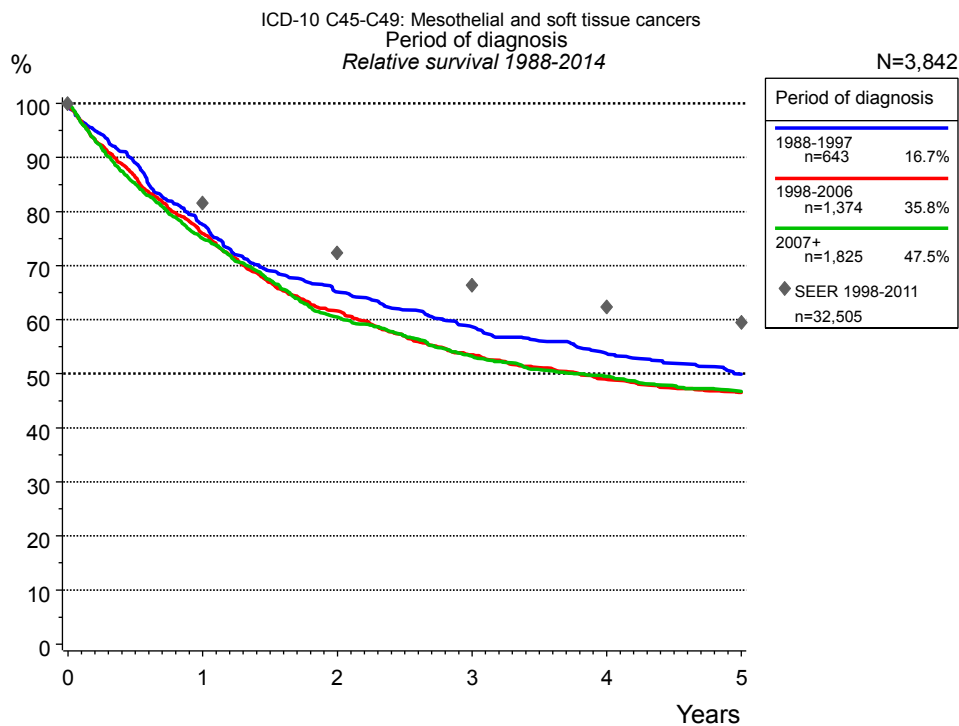
Year of diagnosis	1988-1997	1998-2014
Patients	704	4,319
Diseases	705	4,332
Cases evaluated	646	3,228
Creation date	03/02/2016	
Export date	12/23/2015	
Population	4.64 m	



Munich Cancer Registry at Munich Cancer Center  
Marchioninstr. 15  
Munich, 81377  
Germany

<http://www.tumorregister-muenchen.de/en>

<http://www.tumorregister-muenchen.de/en/facts/surv/sC4549E-ICD-10-C45-C49-Mesoth.-and-soft-tissue-ca.-survival.pdf>



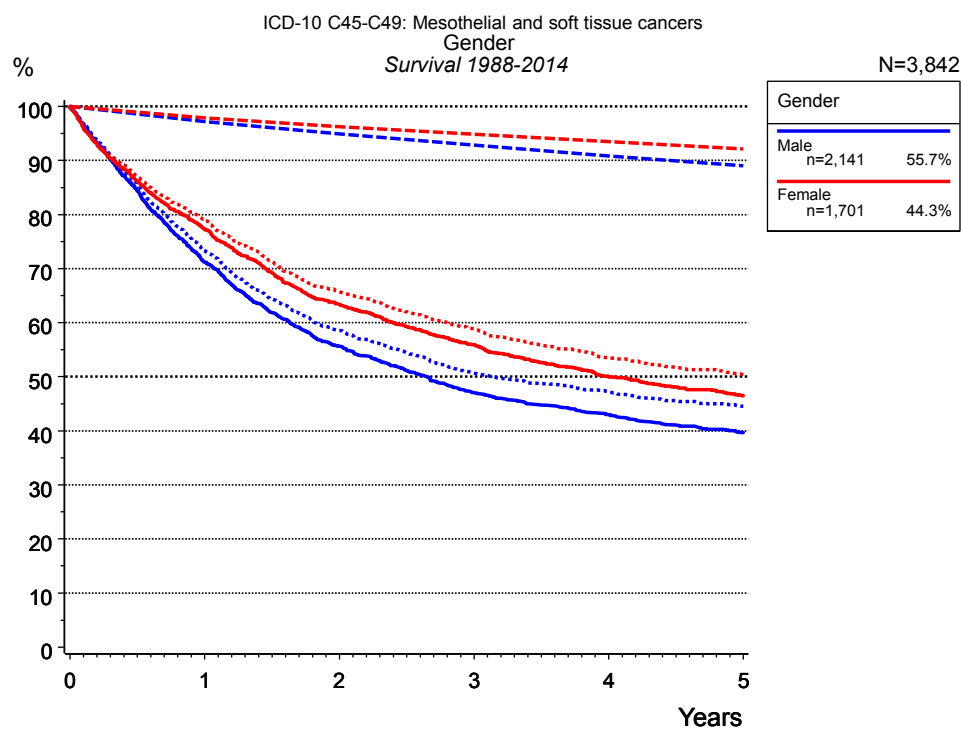
**Figure 1a.** Relative survival of patients with mesoth. and soft tissue ca. by period of diagnosis. Included in the evaluation are 3,842 cases diagnosed between 1988 and 2014.

The survival results of the SEER program (Surveillance, Epidemiology, and End Results) of the American National Cancer Institute (NCI) are summarized as the period of diagnosis from 1998 to 2011, and are represented by gray diamonds in order to facilitate comparisons between MCR and SEER.

The presented survival curves are derived from clinical records with valid follow-up informations, which means that death certificate cases (DCO) cases are omitted from the analysis. With this one restriction, the MCR has provided population-based statistics since 1998, collecting data on all cancer cases in the region of southern Bavaria. Historical data of previous time periods can be heavily selected, therefore, univariate survival comparisons of the presented time periods must be carefully considered. Nonetheless, all calculable survival curves are depicted to facilitate the comparison of long time follow-up analyses of relative survival between particular cancers.

Years	Period of diagnosis					
	1988-1997 n=643		1998-2006 n=1,374		2007+ n=1,825	
	obs. %	rel. %	obs. %	rel. %	obs. %	rel. %
0	100.0	100.0	100.0	100.0	100.0	100.0
1	75.9	77.6	74.1	75.9	73.0	75.0
2	62.7	65.1	59.0	61.6	57.6	60.5
3	55.6	58.7	50.3	53.5	49.7	53.2
4	49.9	53.7	45.3	49.0	45.4	49.5
5	45.6	49.9	42.3	46.5	42.1	46.7

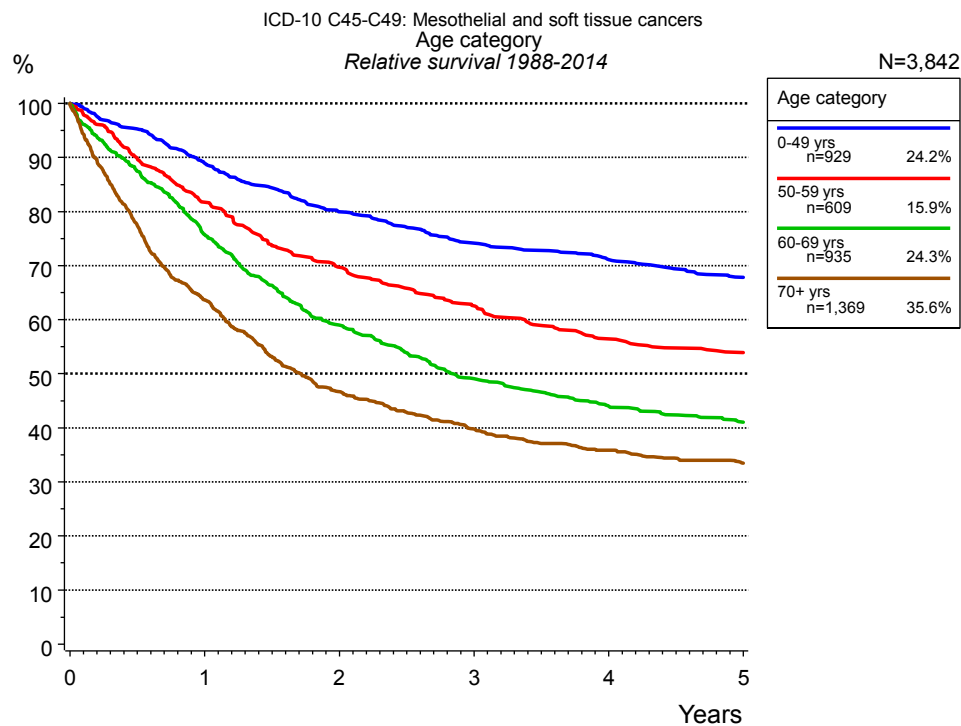
**Table 1b.** Observed (obs.) and relative (rel.) survival of patients with mesoth. and soft tissue ca. by period of diagnosis for period 1988-2014 (N=3,842).



**Figure 2a.** Survival of patients with mesoth. and soft tissue ca. by gender. Included in the evaluation are 3,842 cases diagnosed between 1988 and 2014.

Years	Gender			
	Male n=2,141		Female n=1,701	
	obs. %	rel. %	obs. %	rel. %
0	100.0	100.0	100.0	100.0
1	71.2	73.3	77.3	78.9
2	55.6	58.5	63.3	65.8
3	47.1	50.7	55.9	58.9
4	43.0	47.2	50.1	53.5
5	39.7	44.5	46.5	50.4

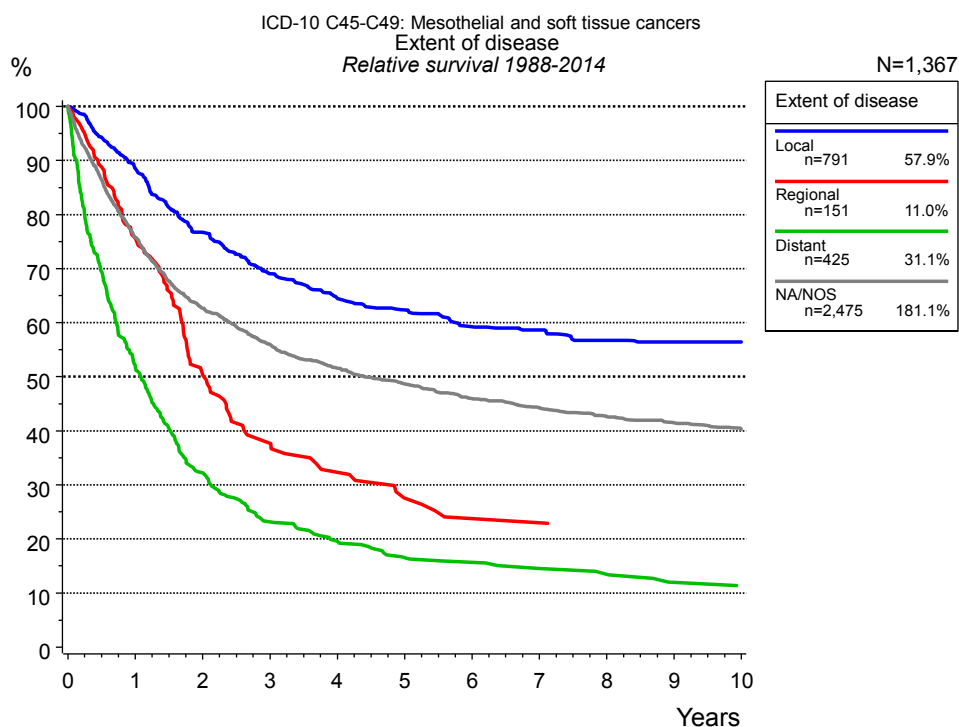
**Table 2b.** Observed (obs.) and relative (rel.) survival of patients with mesoth. and soft tissue ca. by gender for period 1988-2014 (N=3,842).



**Figure 3a.** Relative survival of patients with mesoth. and soft tissue ca. by age category. Included in the evaluation are 3,842 cases diagnosed between 1988 and 2014.

Years	Age category							
	0-49 yrs n=929		50-59 yrs n=609		60-69 yrs n=935		70+ yrs n=1,369	
	obs. %	rel. %	obs. %	rel. %	obs. %	rel. %	obs. %	rel. %
0	100.0	100.0	100.0	100.0	100.0	100.0	100.0	100.0
1	88.8	88.9	81.3	81.7	74.7	75.7	60.1	63.7
2	79.8	80.0	68.9	69.7	57.4	59.0	41.7	46.7
3	74.0	74.1	61.5	62.5	47.0	49.1	33.5	39.8
4	70.8	71.1	55.1	56.5	41.5	44.0	28.6	35.9
5	67.4	67.8	52.3	53.9	38.1	41.1	24.9	33.4

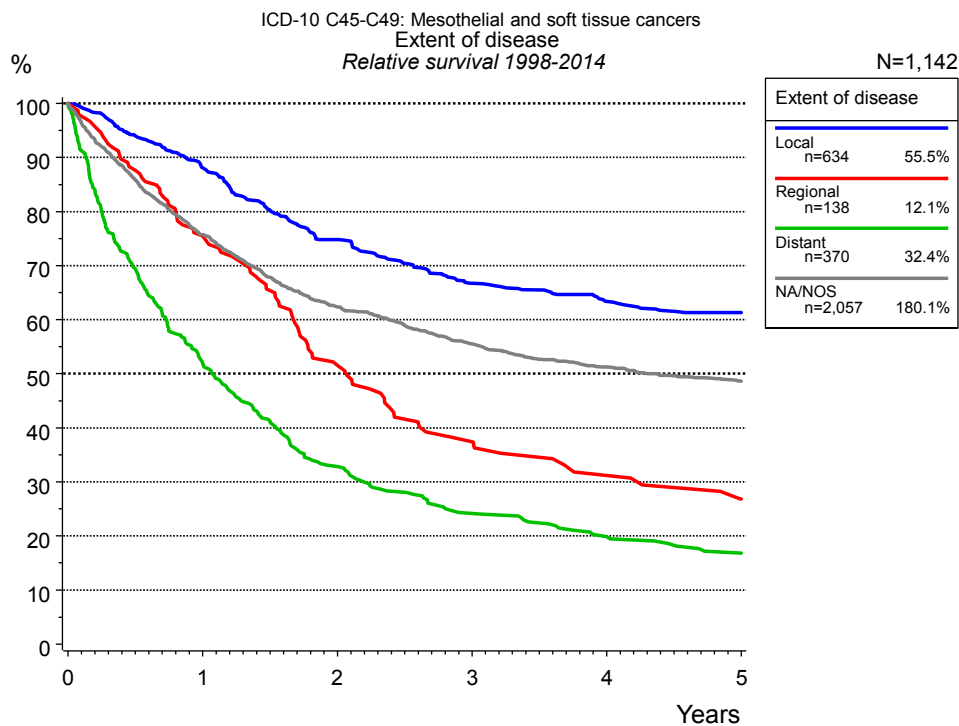
**Table 3b.** Observed (obs.) and relative (rel.) survival of patients with mesoth. and soft tissue ca. by age category for period 1988-2014 (N=3,842).



**Figure 4a.** Relative survival of patients with mesoth. and soft tissue ca. by extent of disease. For 1,996 of 3,842 cases diagnosed between 1988 and 2014 valid data could be obtained for this item. For a total of 1,367 cases an evaluable classification was established. The grey line represents the subgroup of 2,475 patients with missing values regarding extent of disease (64.4% of 3,842 patients, the percent values of all other categories are related to n=1,367).

Years	Extent of disease							
	Local n=791		Regional n=151		Distant n=425		NA/NOS n=2,475	
	obs. %	rel. %	obs. %	rel. %	obs. %	rel. %	obs. %	rel. %
0	100.0	100.0	100.0	100.0	100.0	100.0	100.0	100.0
1	86.7	88.5	74.3	75.6	51.1	51.8	73.7	75.8
2	73.9	76.7	49.3	50.4	31.4	32.2	59.6	62.7
3	65.4	69.0	36.8	37.7	22.4	23.2	52.1	55.9
4	60.1	64.4	31.1	32.3	19.0	19.6	47.2	51.6
5	57.3	62.4	25.7	27.5	15.8	16.6	43.7	48.7
6	53.6	59.3	22.4	23.8	15.0	15.7	40.5	46.0
7	52.3	58.7	22.4	23.0	13.5	14.6	38.3	44.3
8	49.9	56.7	21.1	22.3	13.0	13.5	36.1	42.6
9	48.9	56.4	21.1	21.6	11.1	12.0	34.6	41.5
10	48.0	56.4	21.1	20.8	10.4	11.0	32.9	40.3

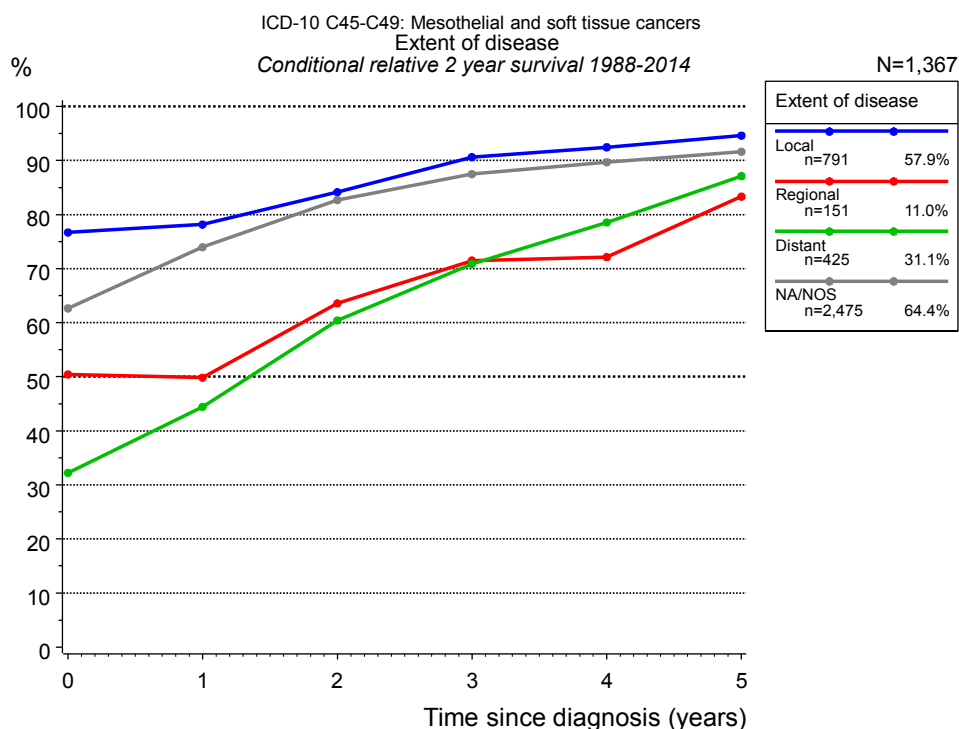
**Table 4b.** Observed (obs.) and relative (rel.) survival of patients with mesoth. and soft tissue ca. by extent of disease for period 1988-2014 (N=1,367).



**Figure 4c.** Relative survival of patients with mesoth. and soft tissue ca. by extent of disease. For 1,700 of 3,199 cases diagnosed between 1998 and 2014 valid data could be obtained for this item. For a total of 1,142 cases an evaluable classification was established. The grey line represents the subgroup of 2,057 patients with missing values regarding extent of disease (64.3% of 3,199 patients, the percent values of all other categories are related to n=1,142).

Years	Extent of disease							
	Local n=634		Regional n=138		Distant n=370		NA/NOS n=2,057	
	obs. %	rel. %	obs. %	rel. %	obs. %	rel. %	obs. %	rel. %
0	100.0	100.0	100.0	100.0	100.0	100.0	100.0	100.0
1	86.3	88.0	74.0	75.4	51.2	52.0	73.5	75.7
2	72.1	74.8	50.4	51.5	32.0	32.8	59.2	62.4
3	63.1	66.7	36.6	37.4	23.4	24.2	51.6	55.5
4	59.1	63.4	30.1	31.2	19.3	19.9	46.8	51.3
5	56.6	61.3	25.0	26.8	16.3	16.9	43.5	48.6

**Table 4d.** Observed (obs.) and relative (rel.) survival of patients with mesoth. and soft tissue ca. by extent of disease for period 1998-2014 (N=1,142).

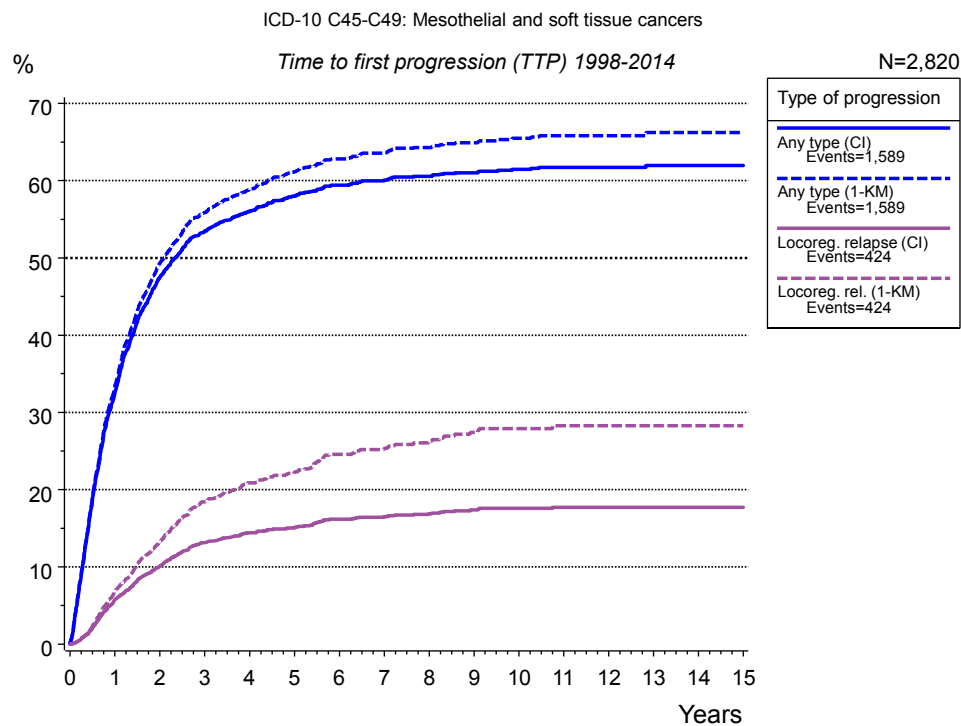


**Figure 4e.** Conditional relative 2-year survival of patients with mesoth. and soft tissue ca. by extent of disease. For 1,996 of 3,842 cases diagnosed between 1988 and 2014 valid data could be obtained for this item. For a total of 1,367 cases an evaluable classification was established. The grey line represents the subgroup of 2,475 patients with missing values regarding extent of disease (64.4% of 3,842 patients, the percent values of all other categories are related to n=1,367).

Years	Extent of disease							
	Local		Regional		Distant		NA/NOS	
	n	Cond. surv. % 2 yrs	n	Cond. surv. % 2 yrs	n	Cond. surv. % 2 yrs	n	Cond. surv. % 2 yrs
0	791	76.7	151	50.4	425	32.2	2,475	62.7
1	655	78.2	107	49.8	206	44.4	1,752	74.0
2	518	84.1	67	63.6	119	60.4	1,339	82.7
3	414	90.6	41	71.5	78	70.9	1,093	87.5
4	338	92.4	30	72.1	57	78.5	923	89.7
5	290	94.6	23	83.3	42	87.1	788	91.6

**Table 4f.** Conditional relative 2-year survival of patients with mesoth. and soft tissue ca. by extent of disease for period 1988-2014 (N=1,367).

Conditional relative survival rates refer to the relative survival probability, in this case for 2 years after cancer diagnosis, compared to the age- and sex-matched population (=100%) under the condition of being alive for a certain time period (x-axis in Figure 4c). The results illustrate to what extent the cancer induced mortality of particular subgroups declines in the subsequent years after detection of the malignancy. For instance, according to the presented survival statistics, patients in the subgroup extent of disease="Local", who are alive at least 3 years after cancer diagnosis, the conditional relative 2-year survival rate is 90.6% (n=414).

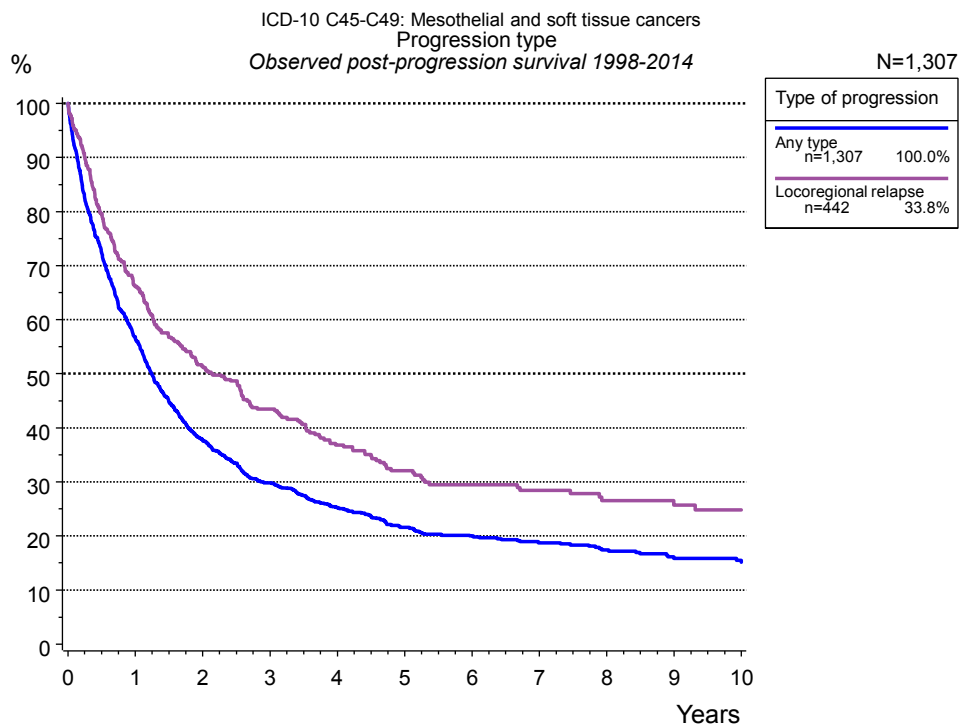


**Figure 5a.** Time to first progression of 2,820 patients with mesoth. and soft tissue ca. diagnosed between 1998 and 2014 (M0 only in solid cancers) estimated by cumulative incidence function (CI, solid line) accounting for death as competing risk and by inverse Kaplan-Meier estimate (1-KM, dashed line). The frequency of events may be underestimated due to underreporting.

Years	Type of progression			
	Any type (CI)	Any type (1-KM)	Locoreg. relapse (CI)	Locoreg. rel. (1-KM)
	n=2,820 %	n=2,820 %	n=2,820 %	n=2,820 %
0	0.0	0.0	0.0	0.0
1	32.7	33.5	5.9	7.0
2	47.5	49.3	10.1	13.2
3	53.5	55.9	13.1	18.4
4	56.0	58.8	14.4	20.9
5	58.0	61.2	15.1	22.2
6	59.4	62.8	16.2	24.6
7	60.0	63.6	16.5	25.3
8	60.6	64.3	16.9	26.3
9	61.0	64.9	17.4	27.4
10	61.4	65.5	17.6	27.9
11	61.7	65.8	17.7	28.3
12	61.7	65.8	17.7	28.3
13	62.0	66.2	17.7	28.3
14	62.0	66.2	17.7	28.3
15	62.0	66.2	17.7	28.3

**Table 5b.** Time to first progression of patients with mesoth. and soft tissue ca. for period 1998-2014 (N=2,820).



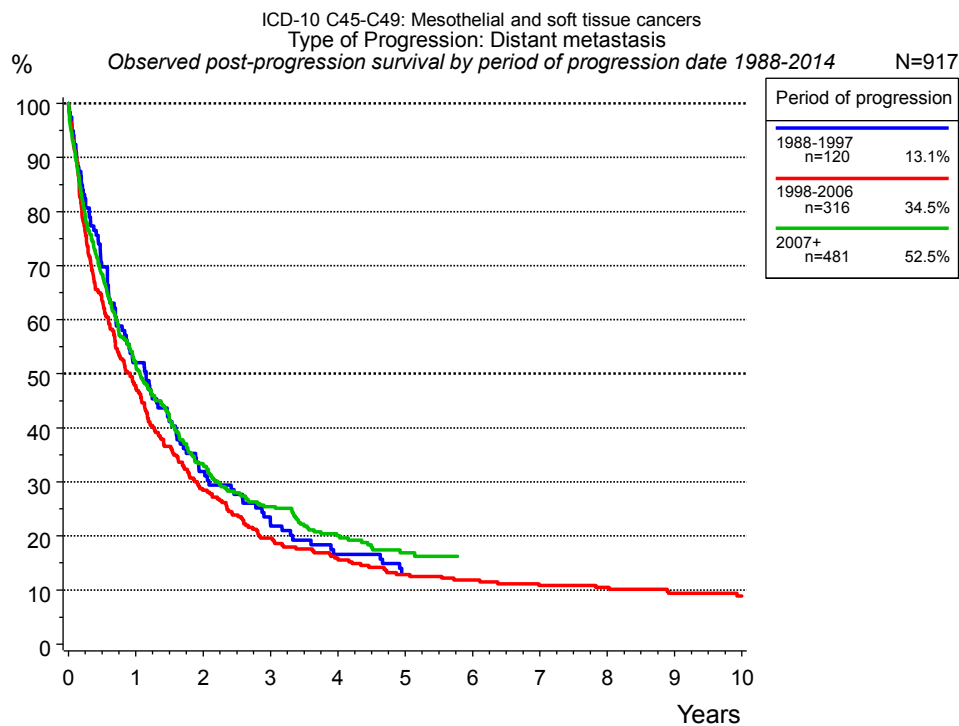


**Figure 5c.** Observed post-progression survival of 1,307 patients with mesoth. and soft tissue ca. diagnosed between 1998 and 2014. These 1,307 patients with documented progression events during their course of disease represent 41.1 % of the totally 3,179 evaluated cases (incl. M1, n=359, 11.3 %). Patients with cancer relapse documented via death certificates only were excluded (n=641, 20.2 %). Multiple progression types on different sites are included in the evaluation even when not occurring synchronously.

Medical record documentation often lacks the linguistic severity to distinguish between local relapse, regional lymph node metastasis and distant spread in solid cancers. Frequently, the statement “not specified” is the only information in registries regarding relapse of the disease. The category “Any type” denotes all cases who suffered from at least one relapse during the course of disease (incl. primary M1-status). Although, the real number of relapsed patients is likely to be much higher. The accumulated percentage of patients with local relapse or distant metastasis exceeds the 100% value because patients are potentially considered in more than one subgroup.

Years	Type of progression	
	Any type n=1,307 %	Locoregional relapse n=442 %
0	100.0	100.0
1	56.7	66.2
2	37.7	51.4
3	29.8	43.4
4	25.3	36.8
5	21.6	32.1
6	20.0	29.5
7	18.8	28.4
8	17.5	26.5
9	15.9	25.7
10	15.1	24.8

**Table 5d.** Observed post-progression survival of patients with mesoth. and soft tissue ca. for period 1998-2014 (N=1,307).



**Figure 5e.** Observed post-progression (distant metastasis) survival of 917 patients with mesoth. and soft tissue ca. diagnosed between 1988 and 2014 by period of progression.

Years	Period of progression		
	1988-1997 n=120	1998-2006 n=316	2007+ n=481
	%	%	%
0	100.0	100.0	100.0
1	52.1	47.6	52.0
2	31.9	28.5	33.2
3	22.7	19.6	25.4
4	16.6	15.9	20.1
5	13.1	12.9	16.9
6		11.8	16.3
7		10.8	16.3
8		10.5	
9		9.4	
10		8.9	

**Table 5f.** Observed post-progression (distant metastasis) survival of patients with mesoth. and soft tissue ca. for period 1988-2014 by period of progression (N=917).

## Shortcuts

MCR Munich Cancer Registry, Germany

NCI National Cancer Institute, USA

SEER Surveillance, Epidemiology, and End Results, USA

UICC Union for International Cancer Control, Geneva

DCO Death certificate only Death certificate provides the only notification to the registry.

NA Not available

NOS Not otherwise specified

OS Overall/Observed survival Overall/Observed survival (Kaplan-Meier estimate)

Date of entry: diagnosis  
Event: death from any cause

RS Relative survival Survival compared to “general population”, ratio of observed to expected survival (Ederer II method), reflecting cancer specific survival

AS Assembled survival Assembled chart of observed, expected, relative survival

CS Conditional survival Survival probability under the condition of surviving a given period of time

TTP Time to progression Time to first progression / relapse  
Date of entry: diagnosis  
Event: (progression / relapse): first local-, lymph node recurrence, distant metastasis or unspecified progression

1-KM 1 minus Kaplan-Meier estimator  
 (“inverse” Kaplan-Meier estimator)

CI Cumulative incidence  
Death as competing risk (according to Kalbfleisch und Prentice)

PPS Post-progression survival Survival since first progression / relapse (Kaplan-Meier estimate)  
Date of entry (progression / relapse): first local-, lymph node recurrence, distant metastasis or unspecified progression  
Event: death from any cause

## Recommended Citation

Munich Cancer Registry. Survival ICD-10 C45-C49: Mesoth. and soft tissue ca. [Internet]. 2016 [updated 2016 Mar 2; cited 2016 May 1]. Available from: <http://www.tumorregister-muenchen.de/en/facts/surv/sC4549E-ICD-10-C45-C49-Mesoth.-and-soft-tissue-ca.-survival.pdf>

## Copyright

The content of the public web site provided by the Munich Cancer Registry is available worldwide and free of charge. All documents are free to download, utilize, copy, print-out and distribute, providing that the MCR is referenced.

## Disclaimer

The Munich Cancer Registry reserves the right to not be responsible for the topicality, correctness, completeness or quality of the information provided. Liability claims regarding damage caused by the use of any information provided, including any kind of information which is incomplete or incorrect, will therefore be rejected.

# Index of figures and tables

Fig./Tbl.		Page
1a	Relative survival by period of diagnosis (chart)	2
1b	Survival by period of diagnosis (table)	2
2a	Survival by gender (chart)	3
2b	Survival by gender (table)	3
3a	Relative survival by age category (chart)	4
3b	Survival by age category (table)	4
4a	Relative survival by extent of disease 1988+ (chart)	5
4b	Survival by extent of disease 1988+ (table)	5
4c	Relative survival by extent of disease 1998+ (chart)	6
4d	Survival by extent of disease 1998+ (table)	6
4e	Conditional survival by extent of disease (chart)	7
4f	Conditional survival by extent of disease (table)	7
5a	Time to first progression (chart)	8
5b	Time to first progression (table)	8
5c	Observed post-progression survival (chart)	9
5d	Observed post-progression survival (table)	9
5e	Observed post-progression survival by period of progression (chart)	10
5f	Observed post-progression survival by period of progression (table)	10