

Munich Cancer Registry



- ▶ Incidence and Mortality
- ▶ Selection Matrix
- ▶ Homepage
- ▶ *Deutsch*

ICD-10 C47: Neoplasm of peripheral nerves

Survival

| | |
|-------------------|------------|
| Year of diagnosis | 1998-2014 |
| Patients | 166 |
| Diseases | 166 |
| Cases evaluated | 137 |
| Creation date | 03/02/2016 |
| Export date | 12/23/2015 |
| Population | 4.64 m |



Munich Cancer Registry at Munich Cancer Center
Marchioninstr. 15
Munich, 81377
Germany

<http://www.tumorregister-muenchen.de/en>

http://www.tumorregister-muenchen.de/en/facts/surv/sC47__E-ICD-10-C47-Neoplasm-of-peripheral-nerves-survival.pdf

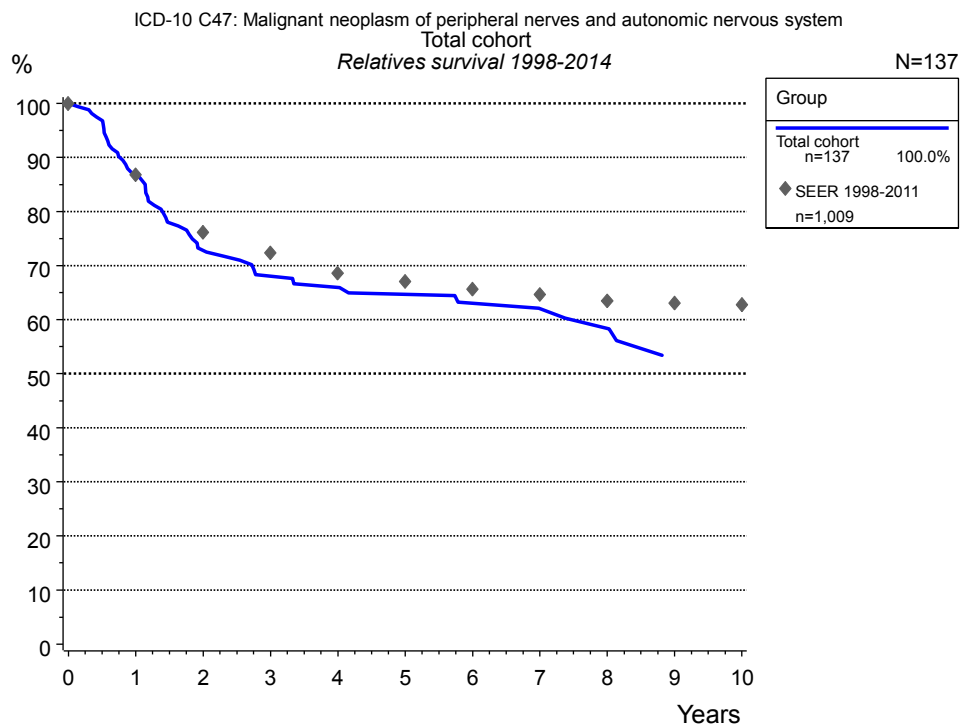


Figure 1a. Relative survival of the total cohort with neoplasm of peripheral nerves. Included in the evaluation are 137 cases diagnosed between 1998 and 2014.

| Years | Group | |
|-------|-----------------------|--------|
| | Total cohort n=137 | |
| | obs. % | rel. % |
| 0 | 100.0 | 100.0 |
| 1 | 86.3 | 86.8 |
| 2 | 71.8 | 72.8 |
| 3 | 66.6 | 68.1 |
| 4 | 64.7 | 66.0 |
| 5 | 62.6 | 64.7 |
| 6 | 60.2 | 63.0 |
| 7 | 58.6 | 62.0 |
| 8 | 56.7 | 58.4 |
| 9 | 49.8 | 53.0 |
| 10 | 49.8 | 50.6 |

Table 1b. Observed (obs.) and relative (rel.) survival of the total cohort with neoplasm of peripheral nerves for period 1998-2014 (N=137).

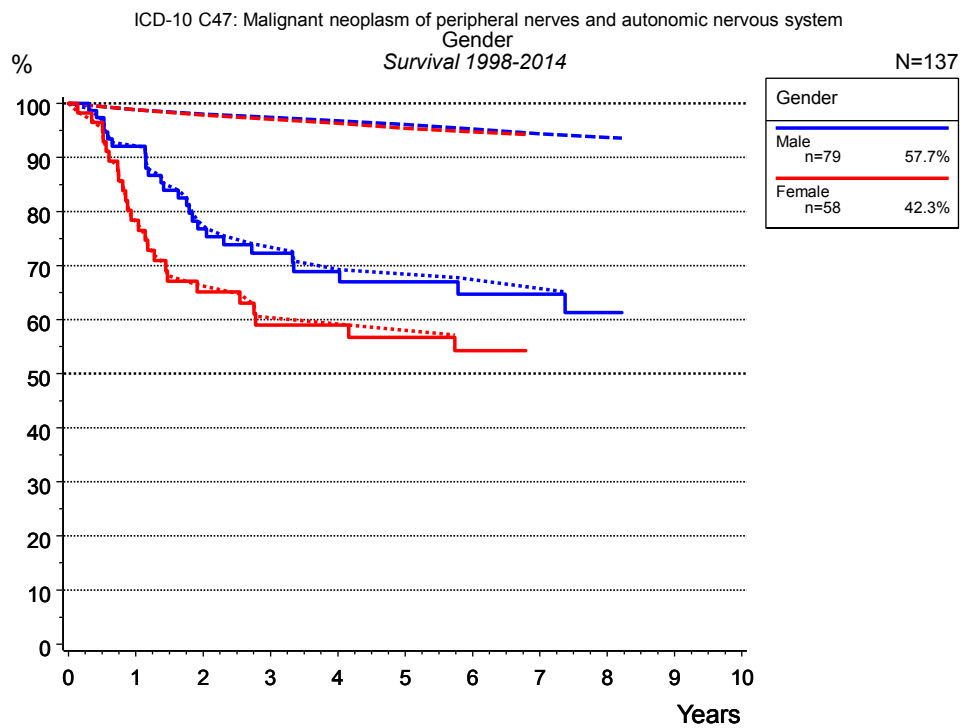


Figure 2a. Survival of patients with neoplasm of peripheral nerves by gender. Included in the evaluation are 137 cases diagnosed between 1998 and 2014.

| Years | Gender | | | |
|-------|--------------|--------|----------------|--------|
| | Male n=79 | | Female n=58 | |
| | obs. % | rel. % | obs. % | rel. % |
| 0 | 100.0 | 100.0 | 100.0 | 100.0 |
| 1 | 92.1 | 92.2 | 78.4 | 78.1 |
| 2 | 76.8 | 77.4 | 65.1 | 66.2 |
| 3 | 72.3 | 73.4 | 59.0 | 60.4 |
| 4 | 68.9 | 69.3 | 59.0 | 59.2 |
| 5 | 67.0 | 68.4 | 56.8 | 58.1 |
| 6 | 64.7 | 67.4 | 54.3 | 56.5 |
| 7 | 64.7 | 65.7 | | |
| 8 | 61.3 | 62.8 | | |

Table 2b. Observed (obs.) and relative (rel.) survival of patients with neoplasm of peripheral nerves by gender for period 1998-2014 (N=137).

Shortcuts

MCR Munich Cancer Registry, Germany

NCI National Cancer Institute, USA

SEER Surveillance, Epidemiology, and End Results, USA

UICC Union for International Cancer Control, Geneva

DCO Death certificate only Death certificate provides the only notification to the registry.

NA Not available

NOS Not otherwise specified

OS Overall/Observed survival Overall/Observed survival (Kaplan-Meier estimate)

Date of entry: diagnosis
Event: death from any cause

RS Relative survival Survival compared to “general population”, ratio of observed to expected survival (Ederer II method), reflecting cancer specific survival

AS Assembled survival Assembled chart of observed, expected, relative survival

CS Conditional survival Survival probability under the condition of surviving a given period of time

TTP Time to progression Time to first progression / relapse
Date of entry: diagnosis
Event: (progression / relapse): first local-, lymph node recurrence, distant metastasis or unspecified progression

1-KM 1 minus Kaplan-Meier estimator
 (“inverse” Kaplan-Meier estimator)

CI Cumulative incidence
Death as competing risk (according to Kalbfleisch und Prentice)

PPS Post-progression survival Survival since first progression / relapse (Kaplan-Meier estimate)
Date of entry (progression / relapse): first local-, lymph node recurrence, distant metastasis or unspecified progression
Event: death from any cause

Recommended Citation

Munich Cancer Registry. Survival ICD-10 C47: Neoplasm of peripheral nerves [Internet]. 2016 [updated 2016 Mar 2; cited 2016 May 1]. Available from: http://www.tumorregister-muenchen.de/en/facts/surv/sC47__E-ICD-10-C47-Neoplasm-of-peripheral-nerves-survival.pdf

Copyright

The content of the public web site provided by the Munich Cancer Registry is available worldwide and free of charge. All documents are free to download, utilize, copy, print-out and distribute, providing that the MCR is referenced.

Disclaimer

The Munich Cancer Registry reserves the right to not be responsible for the topicality, correctness, completeness or quality of the information provided. Liability claims regarding damage caused by the use of any information provided, including any kind of information which is incomplete or incorrect, will therefore be rejected.

Index of figures and tables

| Fig./Tbl. | | Page |
|-----------|--|------|
| 1a | Relatives survival of total cohort (chart) | 2 |
| 1b | Survival of total cohort (table) | 2 |
| 2a | Survival by gender (chart) | 3 |
| 2b | Survival by gender (table) | 3 |