

Munich Cancer Registry



- ▶ Incidence and Mortality
- ▶ Selection Matrix
- ▶ Homepage
- ▶ *Deutsch*

ICD-10 C69: Eye cancer

Survival

| | | |
|-------------------|------------|-----------|
| Year of diagnosis | 1988-1997 | 1998-2014 |
| Patients | 262 | 524 |
| Diseases | 264 | 525 |
| Cases evaluated | 241 | 436 |
| Creation date | 03/02/2016 | |
| Export date | 12/23/2015 | |
| Population | 4.64 m | |



Munich Cancer Registry at Munich Cancer Center
Marchioninstr. 15
Munich, 81377
Germany

<http://www.tumorregister-muenchen.de/en>

http://www.tumorregister-muenchen.de/en/facts/surv/sC69__E-ICD-10-C69-Eye-cancer-survival.pdf

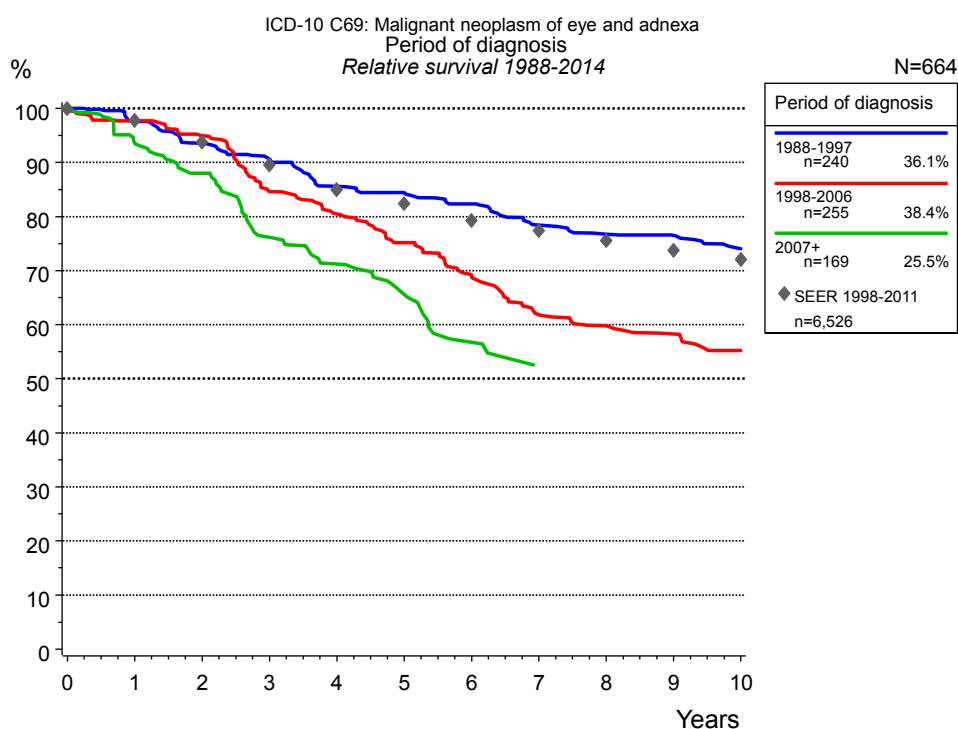


Figure 1a. Relative survival of patients with eye cancer by period of diagnosis. Included in the evaluation are 664 cases diagnosed between 1988 and 2014.

The presented survival curves are derived from clinical records with valid follow-up informations, which means that death certificate cases (DCO) cases are omitted from the analysis. With this one restriction, the MCR has provided population-based statistics since 1998, collecting data on all cancer cases in the region of southern Bavaria. Historical data of previous time periods can be heavily selected, therefore, univariate survival comparisons of the presented time periods must be carefully considered. Nonetheless, all calculable survival curves are depicted to facilitate the comparison of long time follow-up analyses of relative survival between particular cancers.

| Years | Period of diagnosis | | | | | |
|-------|---------------------|--------|--------------------|--------|----------------|--------|
| | 1988-1997 n=240 | | 1998-2006 n=255 | | 2007+ n=169 | |
| | obs. % | rel. % | obs. % | rel. % | obs. % | rel. % |
| 0 | 100.0 | 100.0 | 100.0 | 100.0 | 100.0 | 100.0 |
| 1 | 95.8 | 97.6 | 96.1 | 97.7 | 91.4 | 93.6 |
| 2 | 89.9 | 93.5 | 90.7 | 95.0 | 83.5 | 88.0 |
| 3 | 85.1 | 90.6 | 78.8 | 84.6 | 70.6 | 76.2 |
| 4 | 78.6 | 85.6 | 73.3 | 80.5 | 64.3 | 71.2 |
| 5 | 76.4 | 84.4 | 66.8 | 75.2 | 57.7 | 65.6 |
| 6 | 72.9 | 82.3 | 59.8 | 69.0 | 49.2 | 56.7 |
| 7 | 67.7 | 78.4 | 52.3 | 61.8 | 43.6 | 51.9 |
| 8 | 64.6 | 76.7 | 49.5 | 59.8 | | |
| 9 | 63.3 | 76.5 | 47.1 | 58.3 | | |
| 10 | 59.8 | 74.1 | 43.6 | 55.2 | | |

Table 1b. Observed (obs.) and relative (rel.) survival of patients with eye cancer by period of diagnosis for period 1988-2014 (N=664).

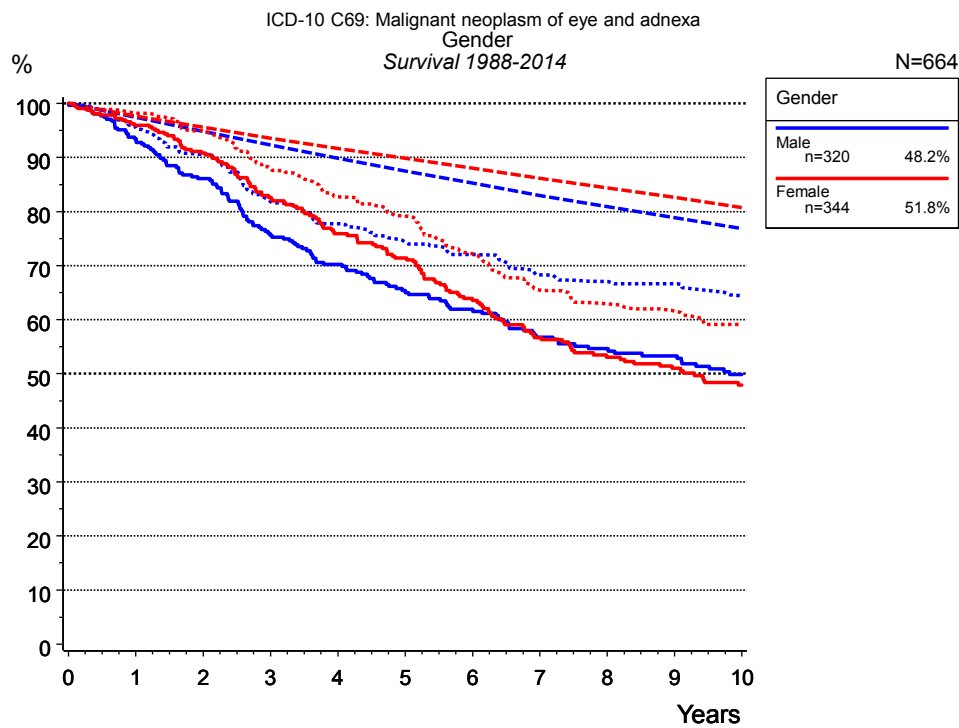


Figure 2a. Survival of patients with eye cancer by gender. Included in the evaluation are 664 cases diagnosed between 1988 and 2014.

| Years | Gender | | | |
|-------|---------------|--------|-----------------|--------|
| | Male n=320 | | Female n=344 | |
| | obs. % | rel. % | obs. % | rel. % |
| 0 | 100.0 | 100.0 | 100.0 | 100.0 |
| 1 | 93.5 | 95.4 | 96.0 | 98.2 |
| 2 | 86.1 | 90.6 | 90.8 | 94.9 |
| 3 | 75.6 | 81.8 | 82.6 | 88.0 |
| 4 | 70.2 | 77.7 | 75.9 | 82.7 |
| 5 | 65.4 | 74.3 | 71.4 | 79.2 |
| 6 | 61.9 | 72.0 | 63.6 | 72.2 |
| 7 | 56.8 | 68.3 | 56.7 | 65.5 |
| 8 | 54.7 | 67.0 | 53.1 | 62.9 |
| 9 | 53.3 | 66.6 | 51.0 | 61.6 |
| 10 | 49.9 | 64.4 | 47.9 | 59.1 |

Table 2b. Observed (obs.) and relative (rel.) survival of patients with eye cancer by gender for period 1988-2014 (N=664).

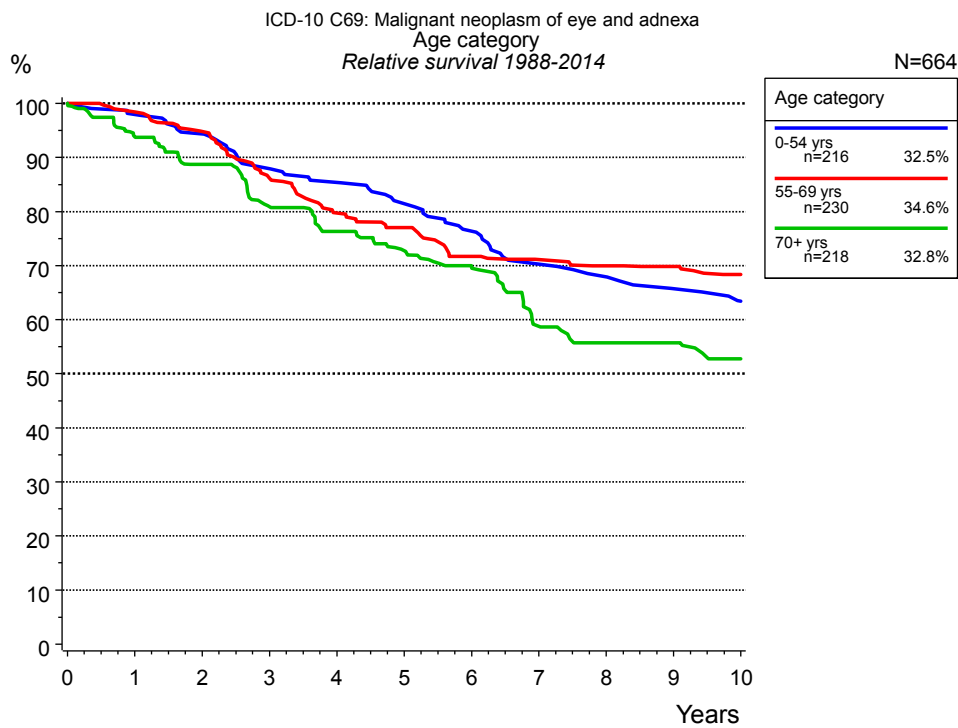


Figure 3a. Relative survival of patients with eye cancer by age category. Included in the evaluation are 664 cases diagnosed between 1988 and 2014.

| Years | Age category | | | | | |
|-------|-------------------|--------|--------------------|--------|------------------|--------|
| | 0-54 yrs n=216 | | 55-69 yrs n=230 | | 70+ yrs n=218 | |
| | obs. % | rel. % | obs. % | rel. % | obs. % | rel. % |
| 0 | 100.0 | 100.0 | 100.0 | 100.0 | 100.0 | 100.0 |
| 1 | 98.0 | 97.9 | 97.7 | 98.4 | 88.6 | 93.8 |
| 2 | 94.3 | 94.3 | 92.6 | 94.8 | 78.8 | 88.7 |
| 3 | 87.8 | 87.9 | 83.0 | 86.2 | 67.3 | 80.9 |
| 4 | 85.0 | 85.4 | 75.7 | 79.7 | 59.6 | 76.3 |
| 5 | 80.9 | 81.5 | 72.1 | 77.0 | 53.2 | 72.8 |
| 6 | 75.4 | 76.4 | 66.1 | 71.7 | 47.6 | 69.8 |
| 7 | 69.0 | 70.3 | 64.0 | 71.1 | 37.4 | 58.8 |
| 8 | 66.9 | 67.9 | 61.8 | 70.0 | 32.9 | 55.7 |
| 9 | 63.9 | 65.7 | 60.7 | 69.8 | 31.5 | 55.7 |
| 10 | 61.4 | 63.4 | 57.7 | 68.4 | 27.0 | 52.8 |

Table 3b. Observed (obs.) and relative (rel.) survival of patients with eye cancer by age category for period 1988-2014 (N=664).

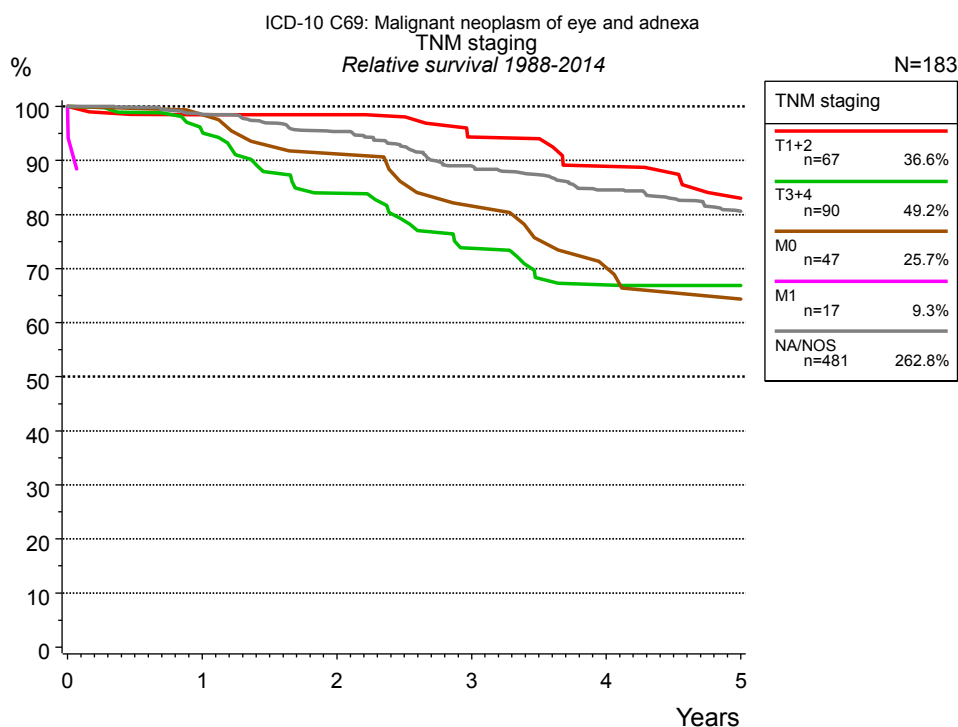


Figure 4a. Relative survival of patients with eye cancer by TNM staging. For 184 of 664 cases diagnosed between 1988 and 2014 valid data could be obtained for this item. For a total of 183 cases an evaluable classification was established. The accumulated percentage exceeds the 100% value because patients are potentially considered in more than one subgroup. The grey line represents the subgroup of 481 patients with missing values regarding TNM staging (72.4 % of 664 patients, the percent values of all other categories are related to n=183).

| Years | TNM staging | | | | | | | | | |
|-------|--------------|--------|--------------|--------|------------|--------|------------|--------|-----------------|--------|
| | T1+2 n=67 | | T3+4 n=90 | | M0 n=47 | | M1 n=17 | | NA/NOS n=481 | |
| | obs. % | rel. % | obs. % | rel. % | obs. % | rel. % | obs. % | rel. % | obs. % | rel. % |
| 0 | 100.0 | 100.0 | 100.0 | 100.0 | 100.0 | 100.0 | 100.0 | 100.0 | 100.0 | 100.0 |
| 1 | 95.5 | 98.5 | 93.2 | 95.3 | 97.8 | 98.5 | | | 96.6 | 98.6 |
| 2 | 94.0 | 98.5 | 79.1 | 84.0 | 89.1 | 91.2 | | | 91.3 | 95.4 |
| 3 | 86.4 | 94.3 | 66.9 | 73.8 | 78.0 | 81.6 | | | 83.4 | 89.0 |
| 4 | 80.0 | 88.9 | 59.6 | 67.0 | 66.4 | 70.2 | | | 77.6 | 84.6 |
| 5 | 73.3 | 83.0 | 58.3 | 66.9 | 61.7 | 64.4 | | | 72.5 | 80.6 |

Table 4b. Observed (obs.) and relative (rel.) survival of patients with eye cancer by TNM staging for period 1988-2014 (N=221).

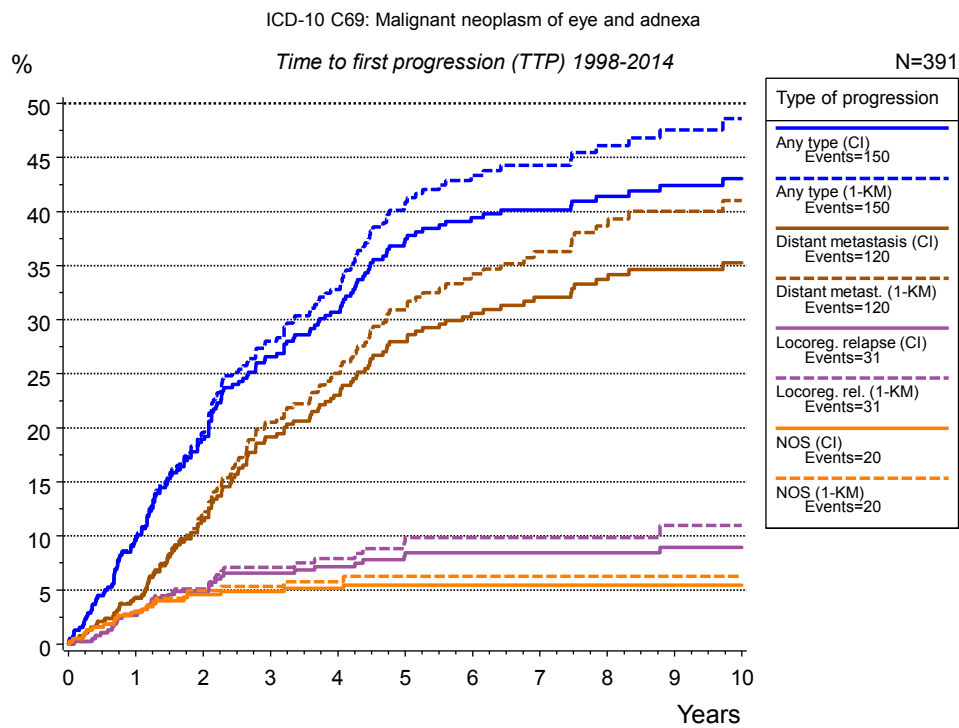


Figure 5a. Time to first progression of 391 patients with eye cancer diagnosed between 1998 and 2014 (M0 only in solid cancers) estimated by cumulative incidence function (CI, solid line) accounting for death as competing risk and by inverse Kaplan-Meier estimate (1-KM, dashed line). The frequency of events may be underestimated due to underreporting.

| Years | Type of progression | | | | | | |
|-------|---------------------|-----------------|-------------------------|------------------------|-----------------------|----------------------|------------|
| | Any type (CI) | Any type (1-KM) | Distant metastasis (CI) | Distant metast. (1-KM) | Locoreg. relapse (CI) | Locoreg. rel. (1-KM) | NOS (CI) |
| | n=391 % | n=391 % | n=391 % | n=391 % | n=391 % | n=391 % | n=391 % |
| 0 | 0.0 | 0.0 | 0.0 | 0.0 | 0.0 | 0.0 | 0.0 |
| 1 | 9.6 | 9.7 | 4.3 | 4.3 | 2.7 | 2.8 | 2.9 |
| 2 | 18.9 | 19.6 | 11.4 | 11.9 | 4.9 | 5.1 | 4.6 |
| 3 | 26.6 | 28.0 | 19.2 | 20.5 | 6.6 | 7.1 | 4.9 |
| 4 | 30.7 | 32.8 | 23.0 | 25.0 | 7.2 | 7.9 | 5.1 |
| 5 | 37.5 | 40.9 | 28.0 | 30.9 | 8.5 | 9.9 | 5.5 |
| 6 | 39.4 | 43.3 | 30.6 | 34.2 | 8.5 | 9.9 | 5.5 |
| 7 | 40.2 | 44.3 | 32.1 | 36.3 | 8.5 | 9.9 | 5.5 |
| 8 | 41.4 | 46.1 | 33.7 | 38.7 | 8.5 | 9.9 | 5.5 |
| 9 | 42.4 | 47.6 | 34.6 | 40.0 | 8.9 | 11.0 | 5.5 |
| 10 | 43.0 | 48.6 | 35.3 | 41.0 | 8.9 | 11.0 | 5.5 |

| Type of progression | |
|---------------------|---------------------|
| <i>cont'd</i> | NOS (1-KM) n=391 |
| Years | % |
| 0 | 0.0 |
| 1 | 3.0 |
| 2 | 5.0 |
| 3 | 5.3 |
| 4 | 5.8 |
| 5 | 6.3 |
| 6 | 6.3 |
| 7 | 6.3 |
| 8 | 6.3 |
| 9 | 6.3 |
| 10 | 6.3 |

Table 5b. Time to first progression of patients with eye cancer for period 1998-2014 (N=391).

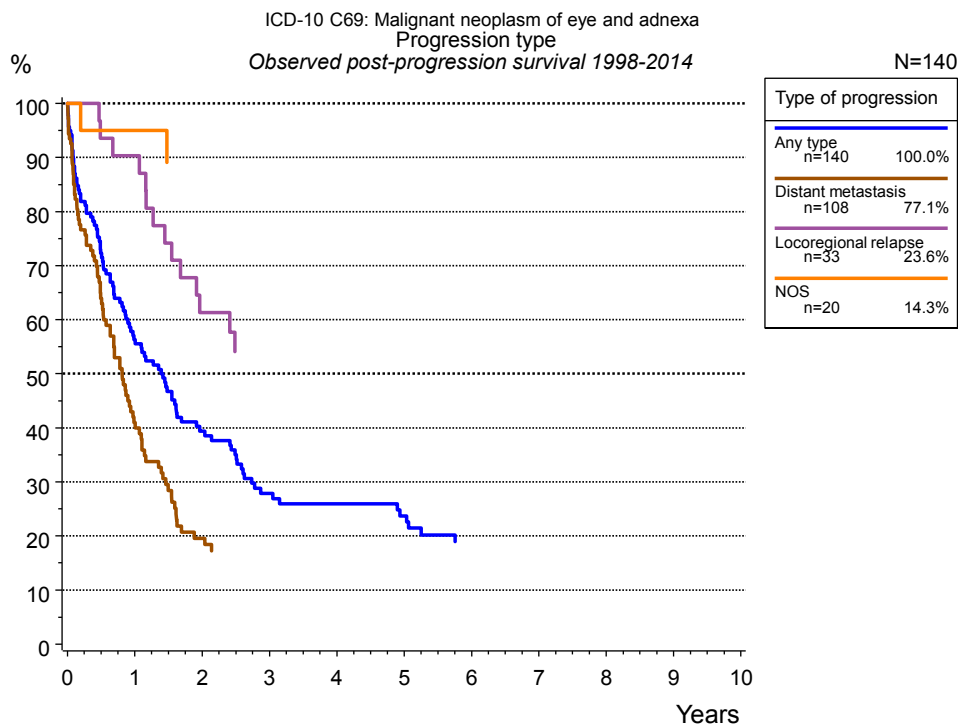


Figure 5c. Observed post-progression survival of 140 patients with eye cancer diagnosed between 1998 and 2014. These 140 patients with documented progression events during their course of disease represent 34.6 % of the totally 405 evaluated cases (incl. M1, n=14, 3.5 %). Patients with cancer relapse documented via death certificates only were excluded (n=24, 5.9 %). Multiple progression types on different sites are included in the evaluation even when not occurring synchronously. The NOS (not otherwise specified) class is included under the condition, that it is the one and only progression type during the course of disease.

Medical record documentation often lacks the linguistic severity to distinguish between local relapse, regional lymph node metastasis and distant spread in solid cancers. Frequently, the statement “not specified” is the only information in registries regarding relapse of the disease. The category “Any type” denotes all cases who suffered from at least one relapse during the course of disease (incl. primary M1-status). Although, the real number of relapsed patients is likely to be much higher. The accumulated percentage of patients with local relapse or distant metastasis exceeds the 100% value because patients are potentially considered in more than one subgroup.

| Years | Type of progression | | | |
|-------|------------------------|----------------------------------|-----------------------------------|------------------|
| | Any type n=140 % | Distant metastasis n=108 % | Locoregional relapse n=33 % | NOS n=20 % |
| 0 | 100.0 | 100.0 | 100.0 | 100.0 |
| 1 | 56.3 | 41.0 | 90.3 | 95.0 |
| 2 | 39.4 | 19.6 | 61.3 | 89.1 |
| 3 | 27.9 | | | |
| 4 | 25.9 | | | |
| 5 | 23.7 | | | |
| 6 | 18.9 | | | |

Table 5d. Observed post-progression survival of patients with eye cancer for period 1998-2014 (N=140).

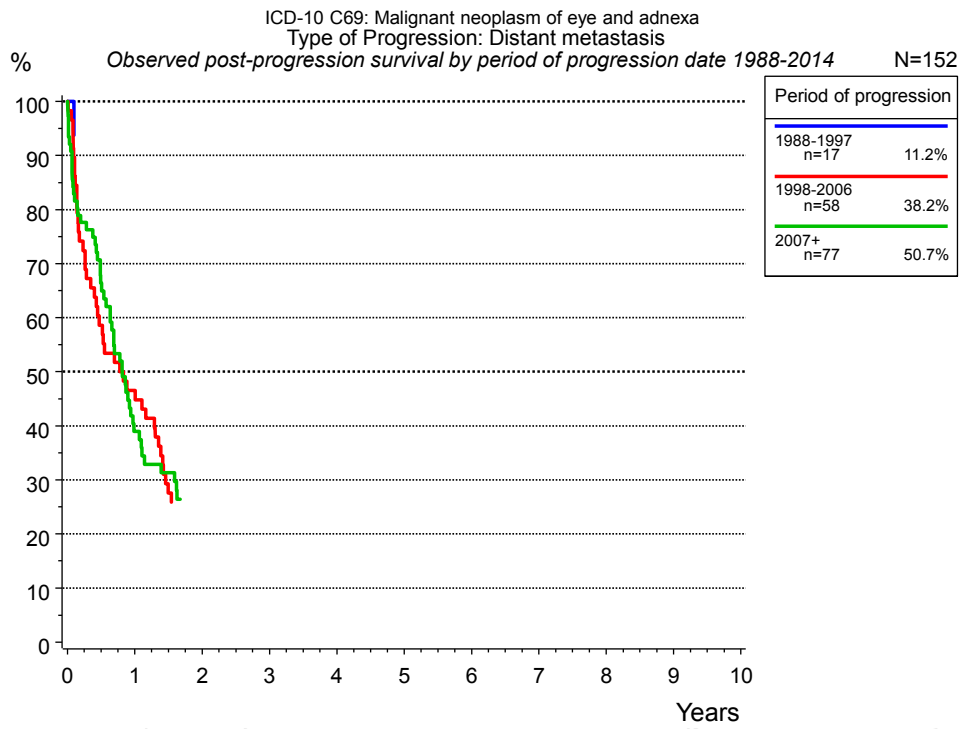


Figure 5e. Observed post-progression (distant metastasis) survival of 152 patients with eye cancer diagnosed between 1988 and 2014 by period of progression.

| Years | Period of progression | | |
|-------|-----------------------|-------------------|---------------|
| | 1988-1997 n=17 | 1998-2006 n=58 | 2007+ n=77 |
| 0 | 100.0 | 100.0 | 100.0 |
| 1 | 46.6 | 46.6 | 39.0 |

Table 5f. Observed post-progression (distant metastasis) survival of patients with eye cancer for period 1988-2014 by period of progression (N=152).

Shortcuts

MCR Munich Cancer Registry, Germany

NCI National Cancer Institute, USA

SEER Surveillance, Epidemiology, and End Results, USA

UICC Union for International Cancer Control, Geneva

DCO Death certificate only Death certificate provides the only notification to the registry.

NA Not available

NOS Not otherwise specified

OS Overall/Observed survival Overall/Observed survival (Kaplan-Meier estimate)
Date of entry: diagnosis
Event: death from any cause

RS Relative survival Survival compared to “general population”,
ratio of observed to expected survival (Ederer II method),
reflecting cancer specific survival

AS Assembled survival Assembled chart of
observed, expected, relative survival

CS Conditional survival Survival probability under the condition of surviving
a given period of time

TTP Time to progression Time to first progression / relapse
Date of entry: diagnosis
Event: (progression / relapse): first local-, lymph node recurrence,
distant metastasis or unspecified progression

1-KM 1 minus Kaplan-Meier estimator
 (“inverse” Kaplan-Meier estimator)

CI Cumulative incidence
Death as competing risk (according to Kalbfleisch und Prentice)

PPS Post-progression survival Survival since first progression / relapse (Kaplan-Meier estimate)
Date of entry (progression / relapse): first local-, lymph node
recurrence, distant metastasis or unspecified progression
Event: death from any cause

Recommended Citation

Munich Cancer Registry. Survival ICD-10 C69: Eye cancer [Internet]. 2016 [updated 2016 Mar 2; cited 2016 May 1]. Available from: http://www.tumorregister-muenchen.de/en/facts/surv/sC69__E-ICD-10-C69-Eye-cancer-survival.pdf

Copyright

The content of the public web site provided by the Munich Cancer Registry is available worldwide and free of charge. All documents are free to download, utilize, copy, print-out and distribute, providing that the MCR is referenced.

Disclaimer

The Munich Cancer Registry reserves the right to not be responsible for the topicality, correctness, completeness or quality of the information provided. Liability claims regarding damage caused by the use of any information provided, including any kind of information which is incomplete or incorrect, will therefore be rejected.

Index of figures and tables

| Fig./Tbl. | | Page |
|-----------|---|------|
| 1a | Relative survival by period of diagnosis (chart) | 2 |
| 1b | Survival by period of diagnosis (table) | 2 |
| 2a | Survival by gender (chart) | 3 |
| 2b | Survival by gender (table) | 3 |
| 3a | Relative survival by age category (chart) | 4 |
| 3b | Survival by age category (table) | 4 |
| 4a | Relative survival by TNM staging (chart) | 5 |
| 4b | Survival by TNM staging (table) | 5 |
| 5a | Time to first progression (chart) | 6 |
| 5b | Time to first progression (table) | 6 |
| 5c | Observed post-progression survival (chart) | 8 |
| 5d | Observed post-progression survival (table) | 8 |
| 5e | Observed post-progression survival by period of progression (chart) | 9 |
| 5f | Observed post-progression survival by period of progression (table) | 9 |