

# Munich Cancer Registry



- ▶ Incidence and Mortality
- ▶ Selection Matrix
- ▶ Homepage
- ▶ *Deutsch*

## ICD-10 C72: Spinal cord cancer

### Survival

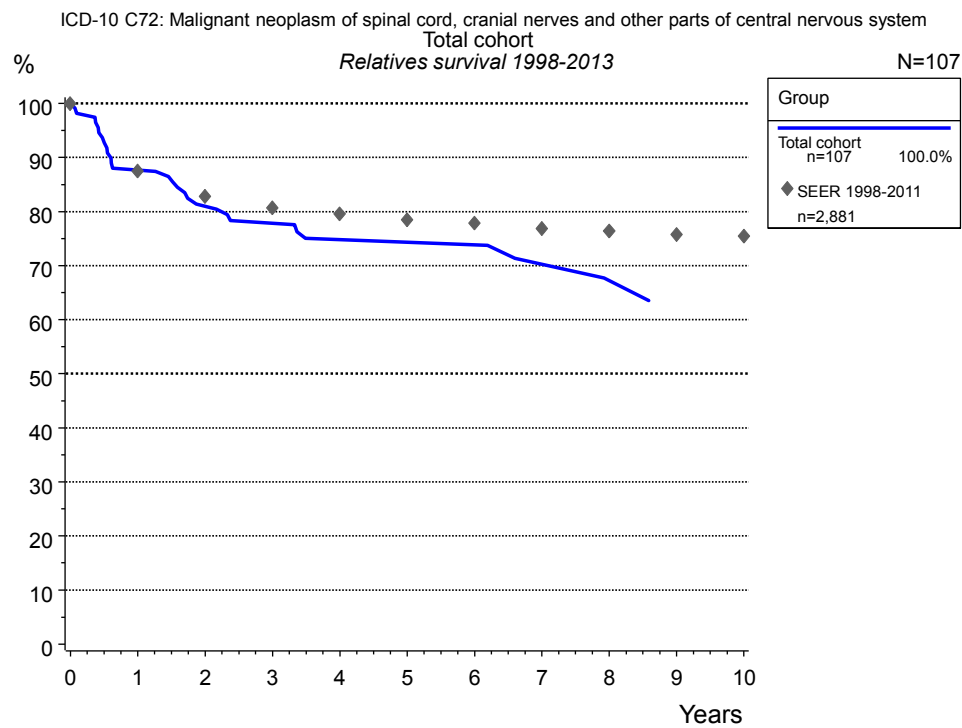
Year of diagnosis	1998-2014
Patients	120
Diseases	120
Cases evaluated	108
Creation date	03/02/2016
Export date	12/23/2015
Population	4.64 m



Munich Cancer Registry at Munich Cancer Center  
Marchioninstr. 15  
Munich, 81377  
Germany

<http://www.tumorregister-muenchen.de/en>

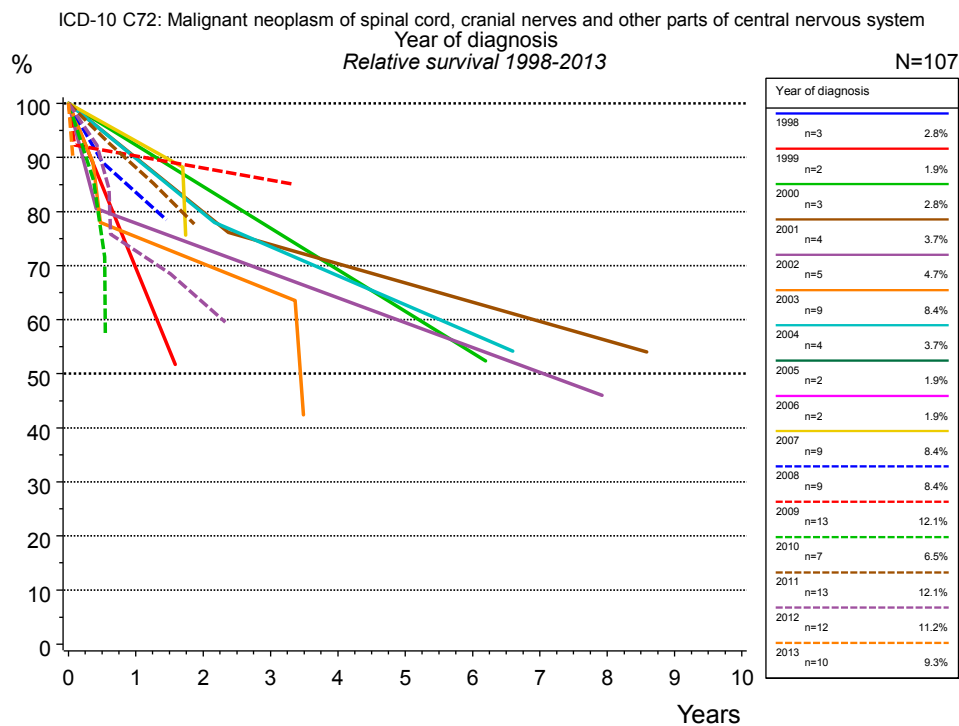
[http://www.tumorregister-muenchen.de/en/facts/surv/sC72\\_\\_E-ICD-10-C72-Spinal-cord-cancer-survival.pdf](http://www.tumorregister-muenchen.de/en/facts/surv/sC72__E-ICD-10-C72-Spinal-cord-cancer-survival.pdf)



**Figure 1a.** Relative survival of the total cohort with spinal cord cancer. Included in the evaluation are 107 cases diagnosed between 1998 and 2013.

Years	Group	
	Total cohort n=107	
	obs. %	rel. %
0	100.0	100.0
1	87.6	87.7
2	80.3	81.0
3	77.0	77.8
4	73.2	74.8
5	73.2	74.3
6	73.2	73.9
7	68.2	70.2
8	64.2	67.2

**Table 1b.** Observed (obs.) and relative (rel.) survival of the total cohort with spinal cord cancer for period 1998-2013 (N=107).



**Figure 1c.** Relative survival of patients with spinal cord cancer by year of diagnosis. Included in the evaluation are 107 cases diagnosed between 1998 and 2013.

The survival results of the SEER program (Surveillance, Epidemiology, and End Results) of the American National Cancer Institute (NCI) are summarized as the period of diagnosis from to , and are represented by gray diamonds in order to facilitate comparisons between MCR and SEER.

		Year of diagnosis													
		1998 n=3		1999 n=2		2000 n=3		2001 n=4		2002 n=5		2003 n=9		2004 n=4	
Years		obs. %	rel. %	obs. %	rel. %	obs. %	rel. %	obs. %	rel. %	obs. %	rel. %	obs. %	rel. %	obs. %	rel. %
0		100.0	100.0	100.0	100.0	100.0	100.0	100.0	100.0	100.0	100.0	100.0	100.0	100.0	100.0
1				100.0	69.6	100.0	92.3	100.0	90.0	80.0	77.9	77.8	75.3	100.0	89.8
2						100.0	84.6	100.0	79.9	80.0	73.3	77.8	70.4	100.0	79.7
3						100.0	76.9	75.0	73.9	80.0	68.7	77.8	65.4	75.0	73.5
4						100.0	69.2	75.0	70.4	80.0	64.1			75.0	68.1
5						100.0	61.5	75.0	66.8	80.0	59.5			75.0	62.8
6						100.0	53.9	75.0	63.3	80.0	54.9			75.0	57.4
7								75.0	59.7	80.0	50.3				
8								75.0	56.1						

		Year of diagnosis													
		2005 n=2		2006 n=2		2007 n=9		2008 n=9		2009 n=13		2010 n=7		2011 n=13	
Years		obs. %	rel. %	obs. %	rel. %	obs. %	rel. %	obs. %	rel. %	obs. %	rel. %	obs. %	rel. %	obs. %	rel. %
0		100.0	100.0	100.0	100.0	100.0	100.0	100.0	100.0	100.0	100.0	100.0	100.0	100.0	100.0
1						100.0	93.0	88.9	83.5	92.3	90.3			92.3	88.2
2										92.3	88.1				
3										92.3	85.8				

<i>cont'd</i>	Year of diagnosis			
	2012 n=12		2013 n=10	
	obs. %	rel. %	obs. %	rel. %
Years				
0	100.0	100.0	100.0	100.0
1	75.0	72.7		
2	66.7	63.2		

**Table 1d.** Observed (obs.) and relative (rel.) survival of patients with spinal cord cancer by year of diagnosis for period 1998-2013 (N=107).

## Shortcuts

MCR Munich Cancer Registry, Germany

NCI National Cancer Institute, USA

SEER Surveillance, Epidemiology, and End Results, USA

UICC Union for International Cancer Control, Geneva

DCO Death certificate only Death certificate provides the only notification to the registry.

NA Not available

NOS Not otherwise specified

OS Overall/Observed survival Overall/Observed survival (Kaplan-Meier estimate)

Date of entry: diagnosis  
Event: death from any cause

RS Relative survival Survival compared to “general population”, ratio of observed to expected survival (Ederer II method), reflecting cancer specific survival

AS Assembled survival Assembled chart of observed, expected, relative survival

CS Conditional survival Survival probability under the condition of surviving a given period of time

TTP Time to progression Time to first progression / relapse  
Date of entry: diagnosis  
Event: (progression / relapse): first local-, lymph node recurrence, distant metastasis or unspecified progression

1-KM 1 minus Kaplan-Meier estimator  
 (“inverse” Kaplan-Meier estimator)

CI Cumulative incidence  
Death as competing risk (according to Kalbfleisch und Prentice)

PPS Post-progression survival Survival since first progression / relapse (Kaplan-Meier estimate)  
Date of entry (progression / relapse): first local-, lymph node recurrence, distant metastasis or unspecified progression  
Event: death from any cause

## Recommended Citation

Munich Cancer Registry. Survival ICD-10 C72: Spinal cord cancer [Internet]. 2016 [updated 2016 Mar 2; cited 2016 May 1]. Available from: [http://www.tumorregister-muenchen.de/en/facts/surv/sC72\\_\\_E-ICD-10-C72-Spinal-cord-cancer-survival.pdf](http://www.tumorregister-muenchen.de/en/facts/surv/sC72__E-ICD-10-C72-Spinal-cord-cancer-survival.pdf)

## Copyright

The content of the public web site provided by the Munich Cancer Registry is available worldwide and free of charge. All documents are free to download, utilize, copy, print-out and distribute, providing that the MCR is referenced.

## Disclaimer

The Munich Cancer Registry reserves the right to not be responsible for the topicality, correctness, completeness or quality of the information provided. Liability claims regarding damage caused by the use of any information provided, including any kind of information which is incomplete or incorrect, will therefore be rejected.

**Index of figures and tables**

Fig./Tbl.		Page
1a	Relatives survival of total cohort (chart)	2
1b	Survival of total cohort (table)	2
1c	Relative survival by year of diagnosis (chart)	3
1d	Survival by year of diagnosis (table)	3