

# Munich Cancer Registry



- ▶ Incidence and Mortality
- ▶ Selection Matrix
- ▶ Homepage
- ▶ *Deutsch*

## ICD-10 C75: Other endocrine glands cancer

### Survival

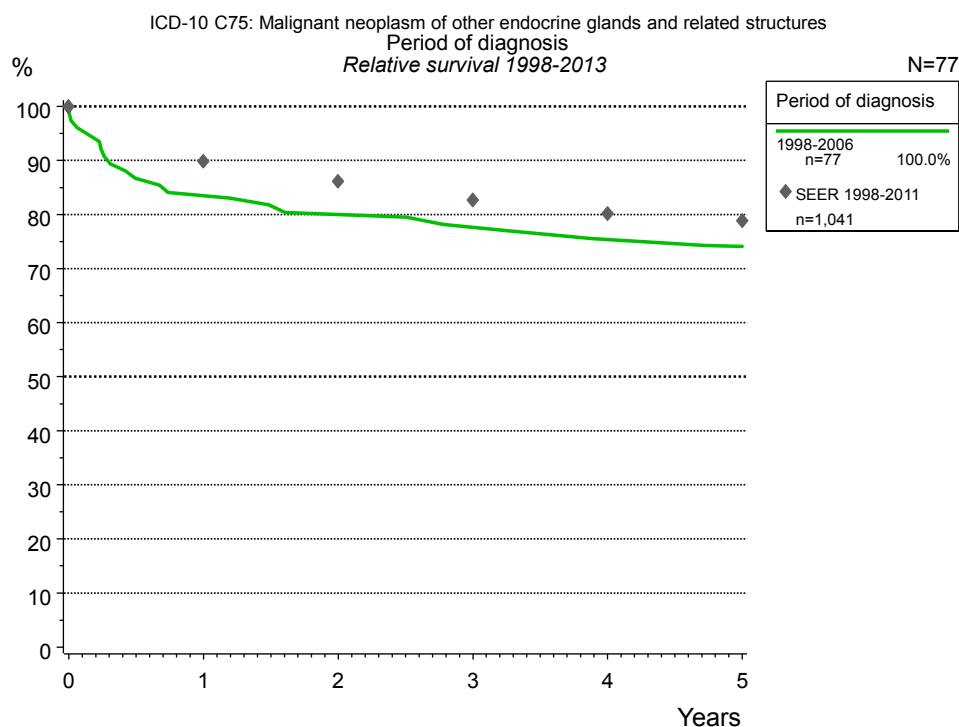
Year of diagnosis	1998-2014
Patients	130
Diseases	130
Cases evaluated	79
Creation date	03/02/2016
Export date	12/23/2015
Population	4.64 m



Munich Cancer Registry at Munich Cancer Center  
Marchioninstr. 15  
Munich, 81377  
Germany

<http://www.tumorregister-muenchen.de/en>

[http://www.tumorregister-muenchen.de/en/facts/surv/sC75\\_\\_E-ICD-10-C75-Other-endocrine-glands-cancer-survival.pdf](http://www.tumorregister-muenchen.de/en/facts/surv/sC75__E-ICD-10-C75-Other-endocrine-glands-cancer-survival.pdf)



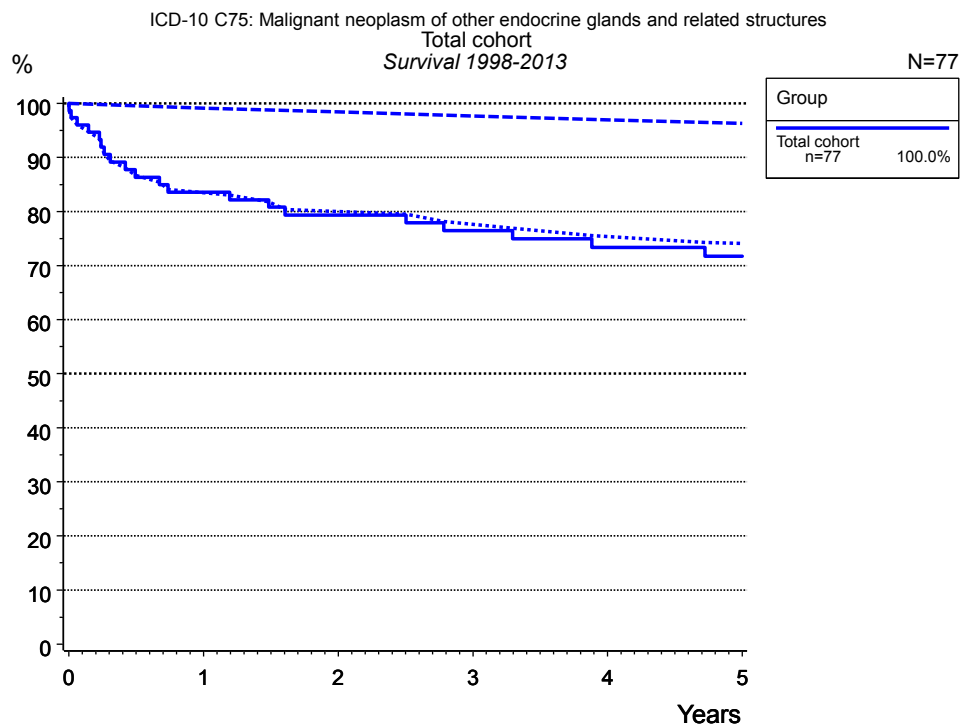
**Figure 1a.** Relative survival of patients with other endocrine glands cancer by period of diagnosis. Included in the evaluation are 77 cases diagnosed between 1998 and 2013.

The survival results of the SEER program (Surveillance, Epidemiology, and End Results) of the American National Cancer Institute (NCI) are summarized as the period of diagnosis from 1998 to 2011, and are represented by gray diamonds in order to facilitate comparisons between MCR and SEER.

The presented survival curves are derived from clinical records with valid follow-up informations, which means that death certificate cases (DCO) cases are omitted from the analysis. With this one restriction, the MCR has provided population-based statistics since 1998, collecting data on all cancer cases in the region of southern Bavaria. Historical data of previous time periods can be heavily selected, therefore, univariate survival comparisons of the presented time periods must be carefully considered. Nonetheless, all calculable survival curves are depicted to facilitate the comparison of long time follow-up analyses of relative survival between particular cancers.

Period of diagnosis		
1998-2006		
n=77		
Years	obs. %	rel. %
0	100.0	100.0
1	83.6	83.5
2	79.4	80.0
3	76.4	77.6
4	73.4	75.4
5	71.7	74.1

**Table 1b.** Observed (obs.) and relative (rel.) survival of patients with other endocrine glands cancer by period of diagnosis for period 1998-2013 (N=77).



**Figure 2a.** Observed, expected and relative survival of the total cohort with other endocrine glands cancer. Included in the evaluation are 77 cases diagnosed between 1998 and 2013.

Years	Group	
	Total cohort n=77	
	obs. %	rel. %
0	100.0	100.0
1	83.6	83.5
2	79.4	80.0
3	76.4	77.6
4	73.4	75.4
5	71.7	74.1

**Table 2b.** Observed (obs.) and relative (rel.) survival of the total cohort with other endocrine glands cancer for period 1998-2013 (N=77).

## Shortcuts

MCR Munich Cancer Registry, Germany

NCI National Cancer Institute, USA

SEER Surveillance, Epidemiology, and End Results, USA

UICC Union for International Cancer Control, Geneva

DCO Death certificate only Death certificate provides the only notification to the registry.

NA Not available

NOS Not otherwise specified

OS Overall/Observed survival Overall/Observed survival (Kaplan-Meier estimate)

Date of entry: diagnosis  
Event: death from any cause

RS Relative survival Survival compared to “general population”, ratio of observed to expected survival (Ederer II method), reflecting cancer specific survival

AS Assembled survival Assembled chart of observed, expected, relative survival

CS Conditional survival Survival probability under the condition of surviving a given period of time

TTP Time to progression Time to first progression / relapse  
Date of entry: diagnosis  
Event: (progression / relapse): first local-, lymph node recurrence, distant metastasis or unspecified progression

1-KM 1 minus Kaplan-Meier estimator  
 (“inverse” Kaplan-Meier estimator)

CI Cumulative incidence  
Death as competing risk (according to Kalbfleisch und Prentice)

PPS Post-progression survival Survival since first progression / relapse (Kaplan-Meier estimate)  
Date of entry (progression / relapse): first local-, lymph node recurrence, distant metastasis or unspecified progression  
Event: death from any cause

## Recommended Citation

Munich Cancer Registry. Survival ICD-10 C75: Other endocrine glands cancer [Internet]. 2016 [updated 2016 Mar 2; cited 2016 May 1]. Available from: [http://www.tumorregister-muenchen.de/en/facts/surv/sC75\\_\\_E-ICD-10-C75-Other-endocrine-glands-cancer-survival.pdf](http://www.tumorregister-muenchen.de/en/facts/surv/sC75__E-ICD-10-C75-Other-endocrine-glands-cancer-survival.pdf)

## Copyright

The content of the public web site provided by the Munich Cancer Registry is available worldwide and free of charge. All documents are free to download, utilize, copy, print-out and distribute, providing that the MCR is referenced.

## Disclaimer

The Munich Cancer Registry reserves the right to not be responsible for the topicality, correctness, completeness or quality of the information provided. Liability claims regarding damage caused by the use of any information provided, including any kind of information which is incomplete or incorrect, will therefore be rejected.

**Index of figures and tables**

Fig./Tbl.		Page
1a	Relative survival by period of diagnosis (chart)	2
1b	Survival by period of diagnosis (table)	2
2a	Survival of total cohort (chart)	3
2b	Survival of total cohort (table)	3