

Munich Cancer Registry



- ▶ Incidence and Mortality
- ▶ Selection Matrix
- ▶ Homepage
- ▶ Deutsch

ICD-10 D05: Breast cancer i.s. (women)

Survival

Year of diagnosis	1988-1997	1998-2014
Patients	667	4,862
Diseases	677	4,938
Cases evaluated	533	3,871
Creation date	03/02/2016	
Export date	12/23/2015	
Population (females)	2.36 m	



Munich Cancer Registry at Munich Cancer Center
Marchioninstr. 15
Munich, 81377
Germany

<http://www.tumorregister-muenchen.de/en>

http://www.tumorregister-muenchen.de/en/facts/surv/sD05f_E-ICD-10-D05-Breast-cancer-i.s.-women-survival.pdf

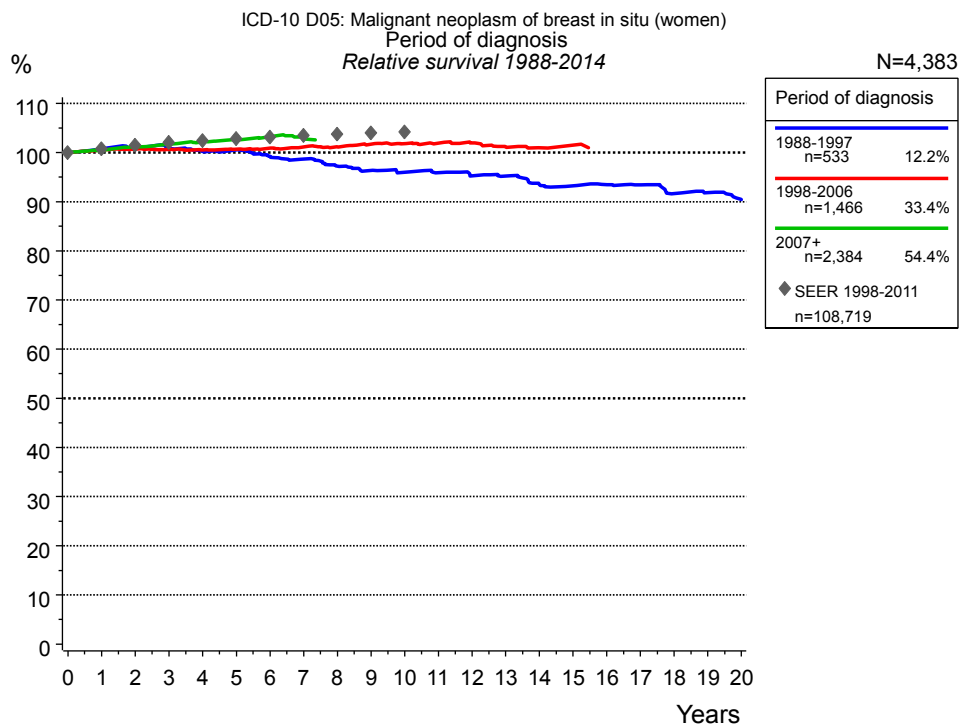


Figure 1a. Relative survival of patients with breast cancer i.s. (women) by period of diagnosis. Included in the evaluation are 4,383 cases diagnosed between 1988 and 2014.

The survival results of the SEER program (Surveillance, Epidemiology, and End Results) of the American National Cancer Institute (NCI) are summarized as the period of diagnosis from 1998 to 2011, and are represented by gray diamonds in order to facilitate comparisons between MCR and SEER.

The presented survival curves are derived from clinical records with valid follow-up informations, which means that death certificate cases (DCO) cases are omitted from the analysis. With this one restriction, the MCR has provided population-based statistics since 1998, collecting data on all cancer cases in the region of southern Bavaria. Historical data of previous time periods can be heavily selected, therefore, univariate survival comparisons of the presented time periods must be carefully considered. Nonetheless, all calculable survival curves are depicted to facilitate the comparison of long time follow-up analyses of relative survival between particular cancers.

Years	Period of diagnosis					
	1988-1997 n=533		1998-2006 n=1,466		2007+ n=2,384	
	obs. %	rel. %	obs. %	rel. %	obs. %	rel. %
0	100.0	100.0	100.0	100.0	100.0	100.0
1	99.6	100.7	99.6	100.5	99.6	100.5
2	98.7	101.0	98.9	100.6	99.3	101.1
3	97.3	100.9	98.0	100.6	98.8	101.7
4	95.6	100.2	96.9	100.5	98.3	102.2
5	94.8	100.5	96.1	100.7	97.8	102.7
6	92.3	99.2	95.3	100.9	97.1	103.2
7	90.8	98.7	94.4	101.1	95.4	102.7
8	88.4	97.2	93.3	101.1		
9	86.7	96.3	92.7	101.7		
10	85.3	96.0	91.5	101.8		
11	84.1	95.9	90.3	101.9		
12	82.5	95.2	89.0	101.9		
13	81.5	95.2	87.0	101.1		
14	78.8	93.5	85.4	101.0		
15	77.6	93.2	85.0	101.5		
16	76.7	93.5				
17	75.5	93.4				
18	72.7	91.7				
19	71.6	91.8				
20	69.3	90.4				

Table 1b. Observed (obs.) and relative (rel.) survival of patients with breast cancer i.s. (women) by period of diagnosis for period 1988-2014 (N=4,383).

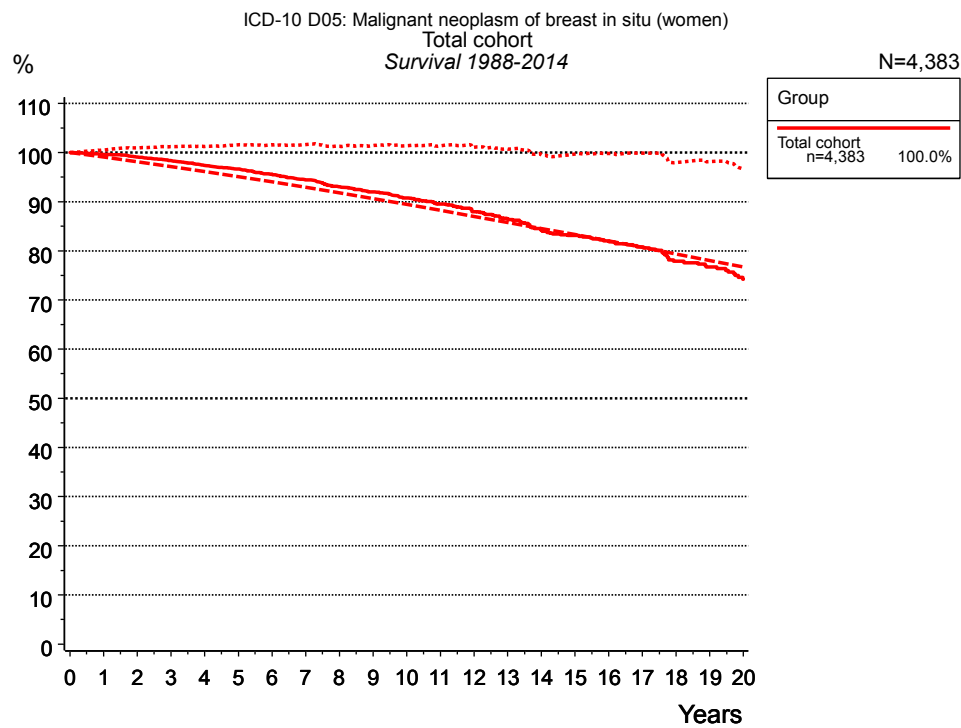


Figure 2a. Observed, expected and relative survival of the total cohort with breast cancer i.s. (women). Included in the evaluation are 4,383 cases diagnosed between 1988 and 2014.

Years	Group	
	Total cohort n=4,383	
	obs. %	rel. %
0	100.0	100.0
1	99.6	100.5
2	99.1	100.9
3	98.3	101.2
4	97.3	101.2
5	96.6	101.6
6	95.5	101.6
7	94.4	101.6
8	93.0	101.3
9	92.0	101.5
10	90.8	101.4
11	89.5	101.4
12	88.0	101.1
13	86.5	100.7
14	84.1	99.5
15	83.1	99.7
16	82.1	99.8
17	80.8	99.9
18	77.9	98.0
19	76.7	98.2
20	74.2	96.7

Table 2b. Observed (obs.) and relative (rel.) survival of the total cohort with breast cancer i.s. (women) for period 1988-2014 (N=4,383).

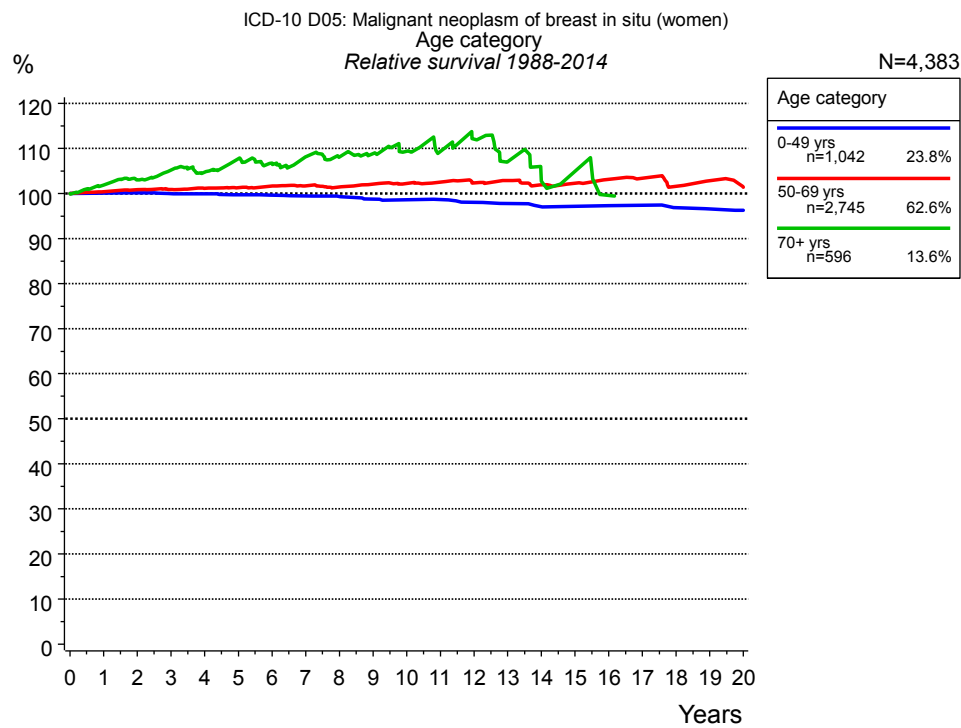


Figure 3a. Relative survival of patients with breast cancer i.s. (women) by age category. Included in the evaluation are 4,383 cases diagnosed between 1988 and 2014.

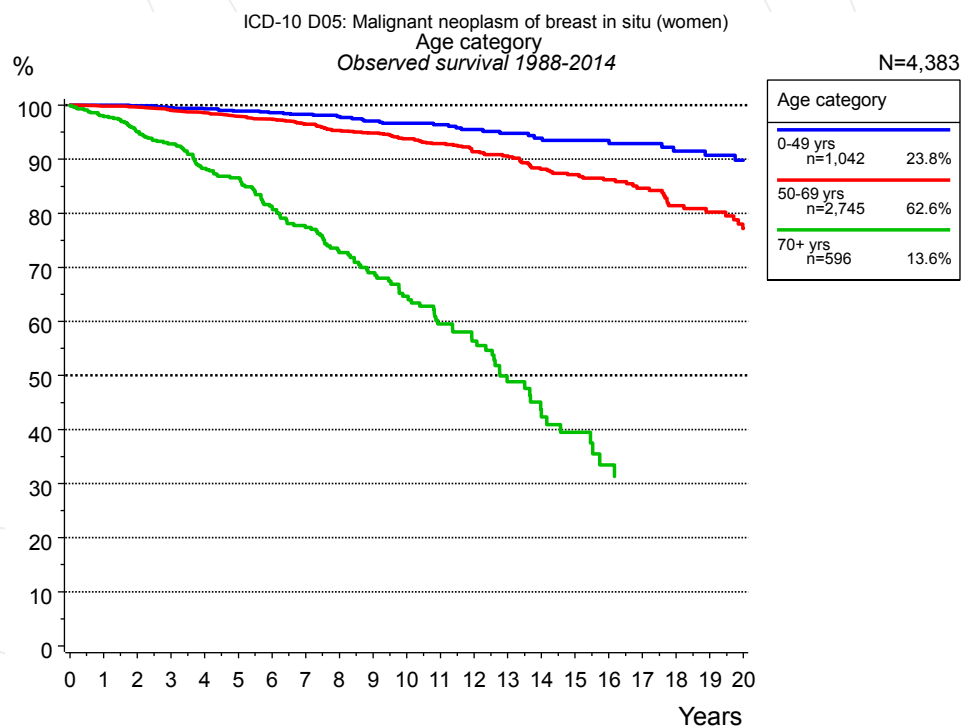


Figure 3b. Observed survival of patients with breast cancer i.s. (women) by age category. Included in the evaluation are 4,383 cases diagnosed between 1988 and 2014.

Years	Age category					
	0-49 yrs n=1,042		50-69 yrs n=2,745		70+ yrs n=596	
	obs. %	rel. %	obs. %	rel. %	obs. %	rel. %
0	100.0	100.0	100.0	100.0	100.0	100.0
1	100.0	100.1	99.8	100.4	97.9	101.9
2	99.9	100.1	99.6	100.8	95.1	103.0
3	99.5	99.9	99.0	100.9	92.9	105.2
4	99.3	99.9	98.5	101.1	88.3	104.7
5	98.9	99.7	97.9	101.3	86.6	107.7
6	98.6	99.6	97.4	101.7	81.0	106.7
7	98.3	99.5	96.5	101.7	77.4	108.1
8	97.9	99.3	95.3	101.4	72.7	108.1
9	97.1	98.8	94.8	102.1	69.0	108.9
10	96.6	98.6	93.8	102.3	64.6	109.3
11	96.4	98.7	92.9	102.5	59.5	109.3
12	95.5	98.0	91.4	102.4	56.4	112.1
13	94.8	97.8	90.6	102.9	48.9	107.1
14	93.9	97.0	88.2	101.9	42.3	102.7
15	93.5	97.2	87.1	102.3	39.5	105.0
16	93.5	97.3	86.2	103.2	33.5	99.6
17	92.9	97.4	84.6	103.4	31.4	104.3
18	91.5	96.9	81.4	101.6		
19	90.7	96.6	80.2	102.8		
20	89.8	96.3	77.2	101.4		

Table 3c. Observed (obs.) and relative (rel.) survival of patients with breast cancer i.s. (women) by age category for period 1988-2014 (N=4,383).

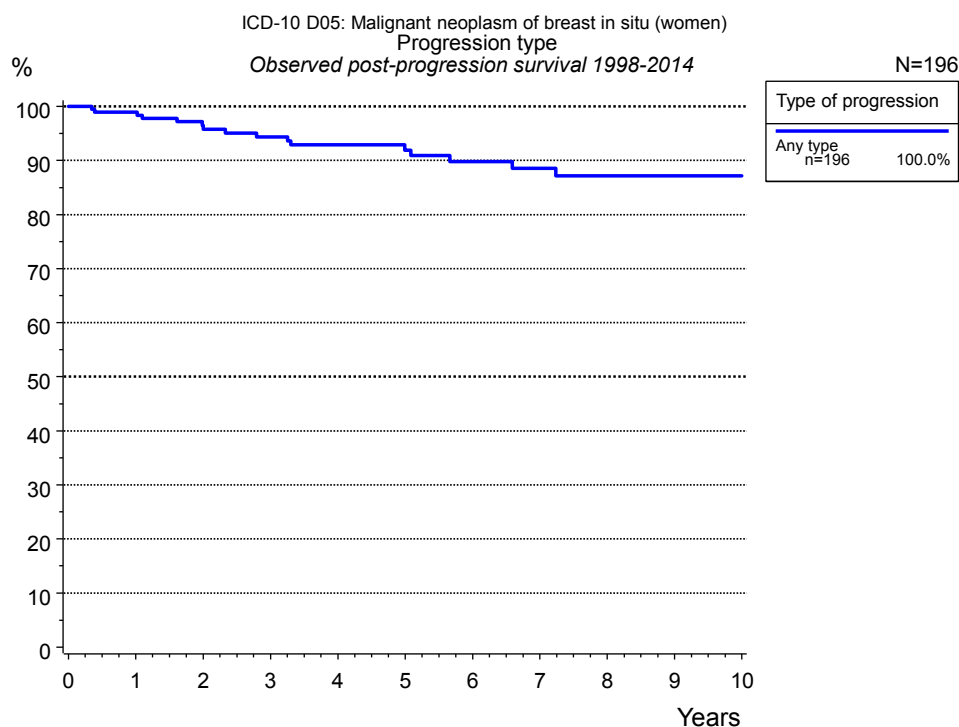


Figure 5c. Observed post-progression survival of 196 patients with breast cancer i.s. (women) diagnosed between 1998 and 2014. These 196 patients with documented progression events during their course of disease represent 5.1 % of the totally 3,824 evaluated cases. Patients with cancer relapse documented via death certificates only were excluded (n=8, 0.2 %).

Medical record documentation often lacks the linguistic severity to distinguish between local relapse, regional lymph node metastasis and distant spread in solid cancers. Frequently, the statement “not specified” is the only information in registries regarding relapse of the disease. The category “Any type” denotes all cases who suffered from at least one relapse during the course of disease (incl. primary M1-status). Although, the real number of relapsed patients is likely to be much higher. The accumulated percentage of patients with local relapse or distant metastasis exceeds the 100% value because patients are potentially considered in more than one subgroup.

Type of progression	
Any type n=196	
Years	%
0	100.0
1	98.9
2	96.5
3	94.4
4	92.9
5	91.9
6	89.8
7	88.5
8	87.1
9	87.1
10	87.1

Table 5d. Observed post-progression survival of patients with breast cancer i.s. (women) for period 1998-2014 (N=196).

Shortcuts

MCR Munich Cancer Registry, Germany

NCI National Cancer Institute, USA

SEER Surveillance, Epidemiology, and End Results, USA

UICC Union for International Cancer Control, Geneva

DCO Death certificate only Death certificate provides the only notification to the registry.

NA Not available

NOS Not otherwise specified

OS Overall/Observed survival Overall/Observed survival (Kaplan-Meier estimate)

Date of entry: diagnosis
Event: death from any cause

RS Relative survival Survival compared to “general population”, ratio of observed to expected survival (Ederer II method), reflecting cancer specific survival

AS Assembled survival Assembled chart of observed, expected, relative survival

CS Conditional survival Survival probability under the condition of surviving a given period of time

TTP Time to progression Time to first progression / relapse
Date of entry: diagnosis
Event: (progression / relapse): first local-, lymph node recurrence, distant metastasis or unspecified progression

1-KM 1 minus Kaplan-Meier estimator
 (“inverse” Kaplan-Meier estimator)

CI Cumulative incidence
Death as competing risk (according to Kalbfleisch und Prentice)

PPS Post-progression survival Survival since first progression / relapse (Kaplan-Meier estimate)
Date of entry (progression / relapse): first local-, lymph node recurrence, distant metastasis or unspecified progression
Event: death from any cause

Recommended Citation

Munich Cancer Registry. Survival ICD-10 D05: Breast cancer i.s. (women) [Internet]. 2016 [updated 2016 Mar 2; cited 2016 May 1]. Available from: http://www.tumorregister-muenchen.de/en/facts/surv/sD05f_E-ICD-10-D05-Breast-cancer-i.s.-women-survival.pdf

Copyright

The content of the public web site provided by the Munich Cancer Registry is available worldwide and free of charge. All documents are free to download, utilize, copy, print-out and distribute, providing that the MCR is referenced.

Disclaimer

The Munich Cancer Registry reserves the right to not be responsible for the topicality, correctness, completeness or quality of the information provided. Liability claims regarding damage caused by the use of any information provided, including any kind of information which is incomplete or incorrect, will therefore be rejected.

Index of figures and tables

Fig./Tbl.		Page
1a	Relative survival by period of diagnosis (chart)	2
1b	Survival by period of diagnosis (table)	3
2a	Survival of total cohort (chart)	4
2b	Survival of total cohort (table)	4
3a	Relative survival by age category (chart)	5
3b	Observed survival by age category (chart)	5
3c	Survival by age category (table)	6
5c	Observed post-progression survival (chart)	7
5d	Observed post-progression survival (table)	7