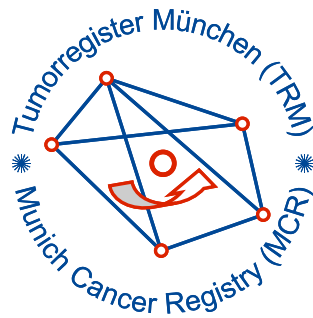


# Munich Cancer Registry



- ▶ Incidence and Mortality
- ▶ Selection Matrix
- ▶ Homepage
- ▶ *Deutsch*

## ICD-10 D39.1: Borderline ovarian tumor

### Survival

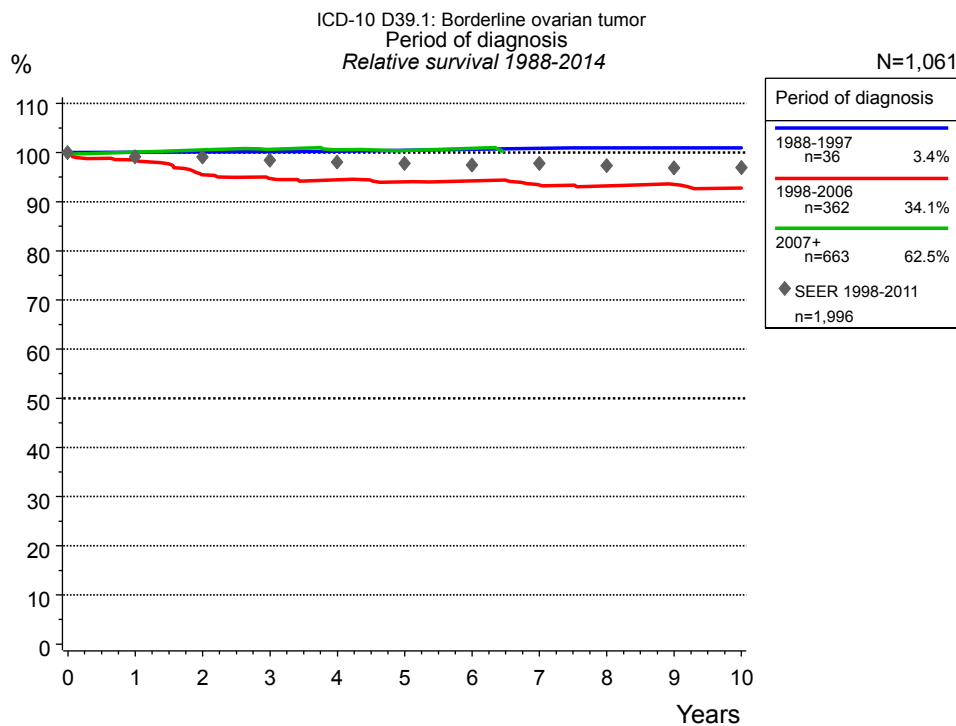
Year of diagnosis	1988-1997	1998-2014
Patients	41	1,168
Diseases	41	1,169
Cases evaluated	36	1,033
Creation date	03/02/2016	
Export date	12/23/2015	
Population (females)	2.36 m	



Munich Cancer Registry at Munich Cancer Center  
Marchioninstr. 15  
Munich, 81377  
Germany

<http://www.tumorregister-muenchen.de/en>

[http://www.tumorregister-muenchen.de/en/facts/surv/sD391\\_E-ICD-10-D39.1-Borderline-ovarian-tumor-survival.pdf](http://www.tumorregister-muenchen.de/en/facts/surv/sD391_E-ICD-10-D39.1-Borderline-ovarian-tumor-survival.pdf)

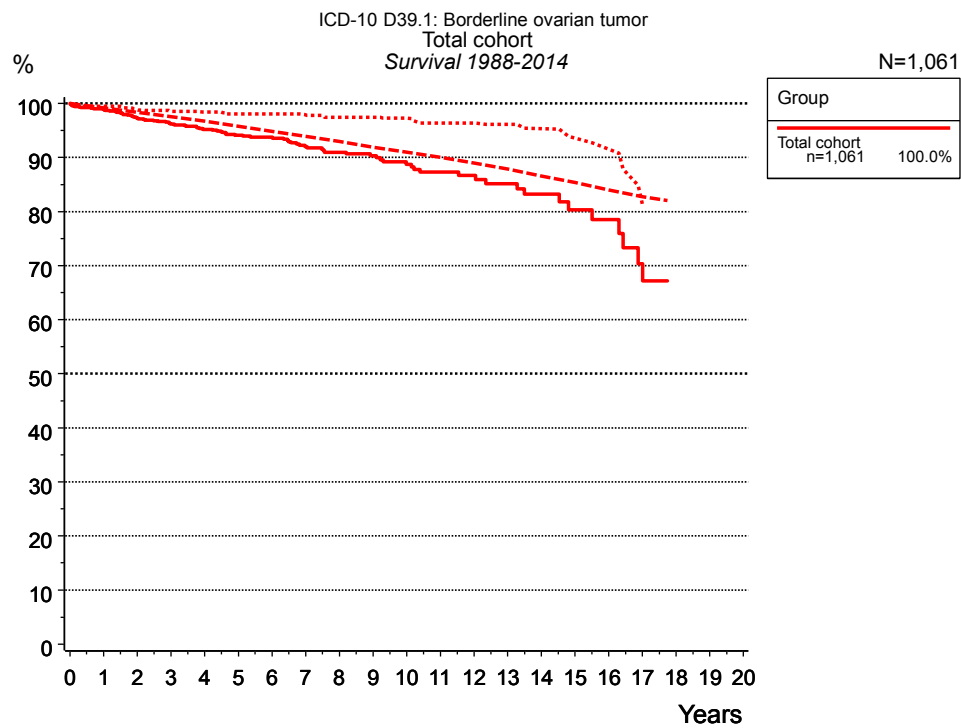


**Figure 1a.** Relative survival of patients with borderline ovarian tumor by period of diagnosis. Included in the evaluation are 1,061 cases diagnosed between 1988 and 2014.

The presented survival curves are derived from clinical records with valid follow-up informations, which means that death certificate cases (DCO) cases are omitted from the analysis. With this one restriction, the MCR has provided population-based statistics since 1998, collecting data on all cancer cases in the region of southern Bavaria. Historical data of previous time periods can be heavily selected, therefore, univariate survival comparisons of the presented time periods must be carefully considered. Nonetheless, all calculable survival curves are depicted to facilitate the comparison of long time follow-up analyses of relative survival between particular cancers.

Years	Period of diagnosis					
	1988-1997 n=36		1998-2006 n=362		2007+ n=663	
	obs. %	rel. %	obs. %	rel. %	obs. %	rel. %
0	100.0	100.0	100.0	100.0	100.0	100.0
1	100.0	100.0	97.7	98.5	99.5	99.7
2	100.0	100.0	93.8	95.5	99.2	99.7
3	100.0	100.0	92.2	94.7	98.3	99.7
4	97.2	100.0	91.3	94.2	97.4	99.7
5	97.2	100.0	90.1	94.0	96.4	99.7
6	97.2	100.0	89.5	94.0	96.4	99.7
7	97.2	100.0	87.6	93.4		
8	94.4	100.0	86.6	93.0		
9	94.4	100.0	85.9	93.0		
10	91.7	100.0	84.7	92.6		

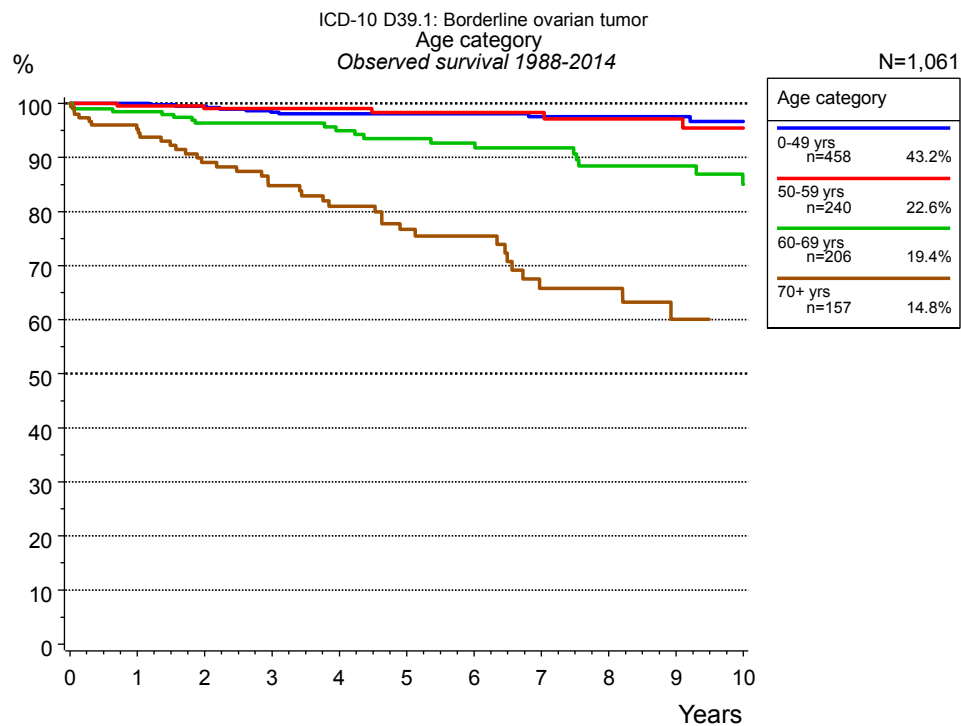
**Table 1b.** Observed (obs.) and relative (rel.) survival of patients with borderline ovarian tumor by period of diagnosis for period 1988-2014 (N=1,061).



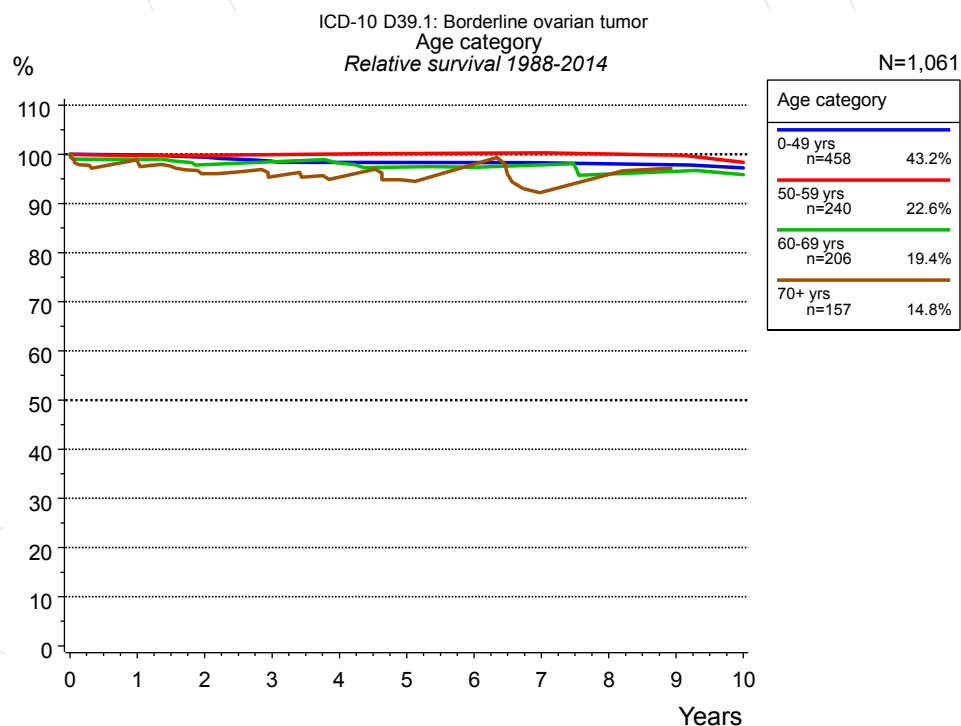
**Figure 2a.** Observed, expected and relative survival of the total cohort with borderline ovarian tumor. Included in the evaluation are 1,061 cases diagnosed between 1988 and 2014.

Years	Group	
	Total cohort n=1,061	
	obs. %	rel. %
0	100.0	100.0
1	98.9	99.5
2	97.3	98.8
3	96.2	98.6
4	95.2	98.4
5	94.1	98.1
6	93.8	98.1
7	92.0	97.9
8	91.0	97.4
9	90.3	97.4
10	88.7	97.3
11	87.3	96.4
12	86.7	96.4
13	85.2	96.1
14	83.2	95.3
15	80.4	93.6
16	78.5	91.5
17	70.4	81.4
18	67.2	76.5

**Table 2b.** Observed (obs.) and relative (rel.) survival of the total cohort with borderline ovarian tumor for period 1988-2014 (N=1,061).



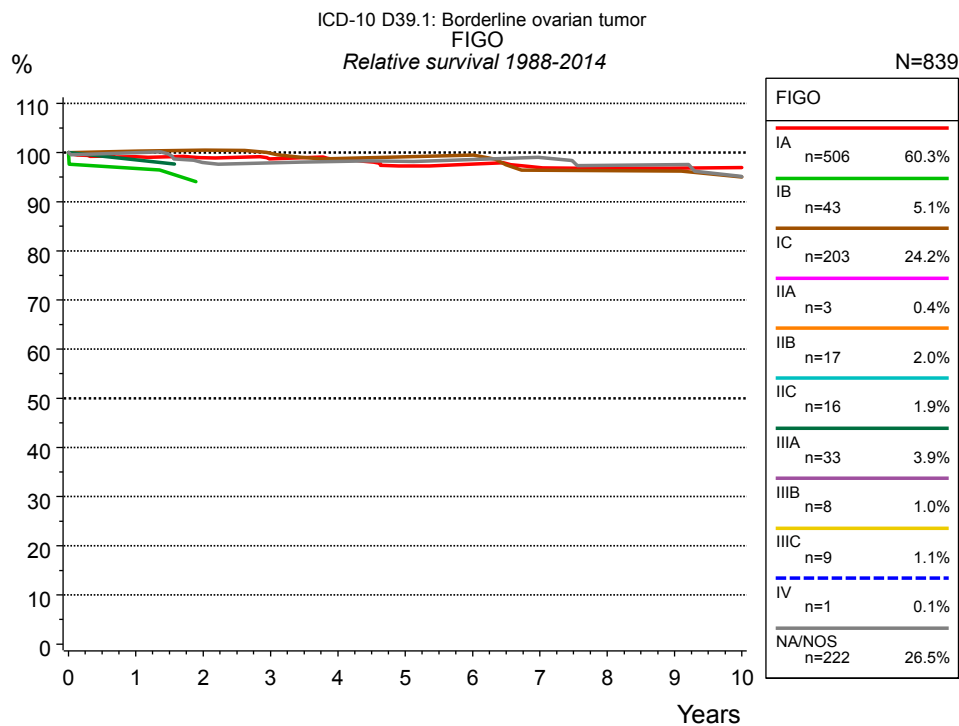
**Figure 3a.** Observed survival of patients with borderline ovarian tumor by age category. Included in the evaluation are 1,061 cases diagnosed between 1988 and 2014.



**Figure 3b.** Relative survival of patients with borderline ovarian tumor by age category. Included in the evaluation are 1,061 cases diagnosed between 1988 and 2014.

Years	Age category							
	0-49 yrs n=458		50-59 yrs n=240		60-69 yrs n=206		70+ yrs n=157	
	obs. %	rel. %	obs. %	rel. %	obs. %	rel. %	obs. %	rel. %
0	100.0	100.0	100.0	100.0	100.0	100.0	100.0	100.0
1	100.0	99.9	99.6	99.8	98.5	99.0	95.3	97.1
2	99.5	99.4	99.1	99.8	96.3	97.8	89.1	96.1
3	98.4	98.6	99.1	99.8	96.3	97.8	84.8	95.3
4	98.1	98.3	99.1	99.8	95.0	97.8	81.0	94.9
5	98.1	98.3	98.3	99.8	93.5	97.3	76.7	94.7
6	98.1	98.3	98.3	99.8	92.7	97.3	75.5	94.5
7	97.5	98.3	98.3	99.8	91.8	97.3	65.8	92.2
8	97.5	98.1	97.1	99.8	88.4	95.8	65.8	92.2
9	97.5	97.8	97.1	99.8	88.4	95.8	60.1	92.2
10	96.6	97.2	95.4	98.4	85.1	95.8	60.1	92.2

**Table 3c.** Observed (obs.) and relative (rel.) survival of patients with borderline ovarian tumor by age category for period 1988-2014 (N=1,061).



**Figure 4a.** Relative survival of patients with borderline ovarian tumor by FIGO. For 865 of 1,061 cases diagnosed between 1988 and 2014 valid data could be obtained for this item. For a total of 839 cases an evaluable classification was established. The grey line represents the subgroup of 222 patients with missing values regarding FIGO (20.9% of 1,061 patients, the percent values of all other categories are related to n=839). Subgroups with sample size <15 are dropped from the chart.

FIGO														
Years	IA n=506		IB n=43		IC n=203		IIA n=3		IIB n=17		IIC n=16		IIIA n=33	
	obs. %	rel. %	obs. %	rel. %	obs. %	rel. %	obs. %	rel. %	obs. %	rel. %	obs. %	rel. %	obs. %	rel. %
0	100.0	100.0	100.0	100.0	100.0	100.0	100.0	100.0	100.0	100.0	100.0	100.0	100.0	100.0
1	98.3	99.1	97.6	96.8	100.0	100.0			100.0	97.3			100.0	98.5
2	97.4	98.9			99.5	100.0			100.0	94.6				
3	96.3	98.7			97.6	99.8			100.0	91.9				
4	95.3	98.6			95.6	98.7			100.0	89.2				
5	93.2	97.3			95.6	98.7			100.0	86.5				
6	92.8	97.3			95.6	98.7			100.0	83.8				
7	91.3	97.0			90.9	96.4			100.0	81.1				
8	90.1	96.8			90.9	96.3			100.0	78.3				
9	88.6	96.8			90.9	96.3			100.0	75.6				
10	88.6	96.8			89.0	95.0			100.0	72.9				

<i>cont'd</i>	FIGO							
	IIIB n=8		IIIC n=9		IV n=1		NA/NOS n=222	
Years	obs. %	rel. %	obs. %	rel. %	obs. %	rel. %	obs. %	rel. %
0	100.0	100.0	100.0	100.0	100.0	100.0	100.0	100.0
1	100.0	86.6					99.5	99.6
2							96.4	98.0
3							95.9	97.6
4							95.3	97.6
5							94.6	97.6
6							93.9	97.6
7							93.0	97.6
8							90.8	97.3
9							90.8	97.3
10							86.6	95.1

**Table 4b.** Observed (obs.) and relative (rel.) survival of patients with borderline ovarian tumor by FIGO for period 1988-2014 (N=839).

## Shortcuts

MCR Munich Cancer Registry, Germany

NCI National Cancer Institute, USA

SEER Surveillance, Epidemiology, and End Results, USA

UICC Union for International Cancer Control, Geneva

DCO Death certificate only Death certificate provides the only notification to the registry.

NA Not available

NOS Not otherwise specified

OS Overall/Observed survival Overall/Observed survival (Kaplan-Meier estimate)

Date of entry: diagnosis  
Event: death from any cause

RS Relative survival Survival compared to “general population”, ratio of observed to expected survival (Ederer II method), reflecting cancer specific survival

AS Assembled survival Assembled chart of observed, expected, relative survival

CS Conditional survival Survival probability under the condition of surviving a given period of time

TTP Time to progression Time to first progression / relapse  
Date of entry: diagnosis  
Event: (progression / relapse): first local-, lymph node recurrence, distant metastasis or unspecified progression

1-KM 1 minus Kaplan-Meier estimator  
 (“inverse” Kaplan-Meier estimator)

CI Cumulative incidence  
Death as competing risk (according to Kalbfleisch und Prentice)

PPS Post-progression survival Survival since first progression / relapse (Kaplan-Meier estimate)  
Date of entry (progression / relapse): first local-, lymph node recurrence, distant metastasis or unspecified progression  
Event: death from any cause

## Recommended Citation

Munich Cancer Registry. Survival ICD-10 D39.1: Borderline ovarian tumor [Internet]. 2016 [updated 2016 Mar 2; cited 2016 May 1]. Available from: [http://www.tumorregister-muenchen.de/en/facts/surv/sD391\\_E-ICD-10-D39.1-Borderline-ovarian-tumor-survival.pdf](http://www.tumorregister-muenchen.de/en/facts/surv/sD391_E-ICD-10-D39.1-Borderline-ovarian-tumor-survival.pdf)

## Copyright

The content of the public web site provided by the Munich Cancer Registry is available worldwide and free of charge. All documents are free to download, utilize, copy, print-out and distribute, providing that the MCR is referenced.

## Disclaimer

The Munich Cancer Registry reserves the right to not be responsible for the topicality, correctness, completeness or quality of the information provided. Liability claims regarding damage caused by the use of any information provided, including any kind of information which is incomplete or incorrect, will therefore be rejected.



**Index of figures and tables**

Fig./Tbl.		Page
1a	Relative survival by period of diagnosis (chart)	2
1b	Survival by period of diagnosis (table)	2
2a	Survival of total cohort (chart)	3
2b	Survival of total cohort (table)	3
3a	Observed survival by age category (chart)	4
3b	Relative survival by age category (chart)	4
3c	Survival by age category (table)	5
4a	Relative survival by FIGO 1988+ (chart)	6
4b	Survival by FIGO 1988+ (table)	6