

# Munich Cancer Registry



- ▶ Incidence and Mortality
- ▶ Selection Matrix
- ▶ Homepage
- ▶ *Deutsch*

## ICD-10 C96: Systemic Disease NOS

### Survival

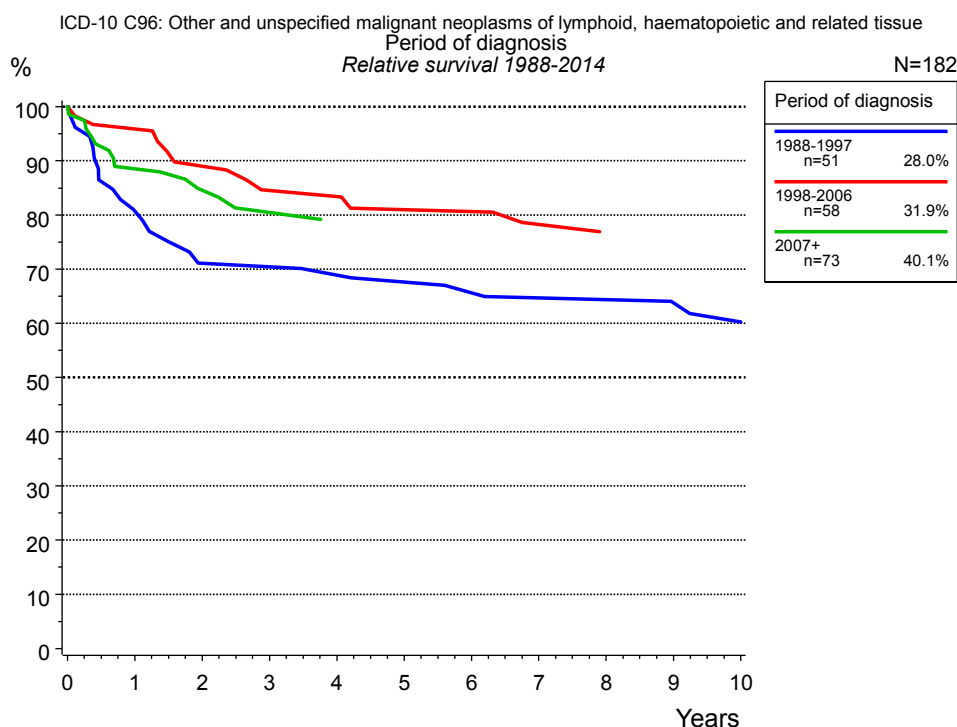
Year of diagnosis	1988-1997	1998-2014
Patients	51	195
Diseases	51	195
Cases evaluated	51	135
Creation date	04/11/2016	
Export date	12/23/2015	
Population	4.64 m	



Munich Cancer Registry at Munich Cancer Center  
Marchioninstr. 15  
Munich, 81377  
Germany

<http://www.tumorregister-muenchen.de/en>

[http://www.tumorregister-muenchen.de/en/facts/surv/sC96\\_\\_E-ICD-10-C96-Systemic-Disease-NOS-survival.pdf](http://www.tumorregister-muenchen.de/en/facts/surv/sC96__E-ICD-10-C96-Systemic-Disease-NOS-survival.pdf)

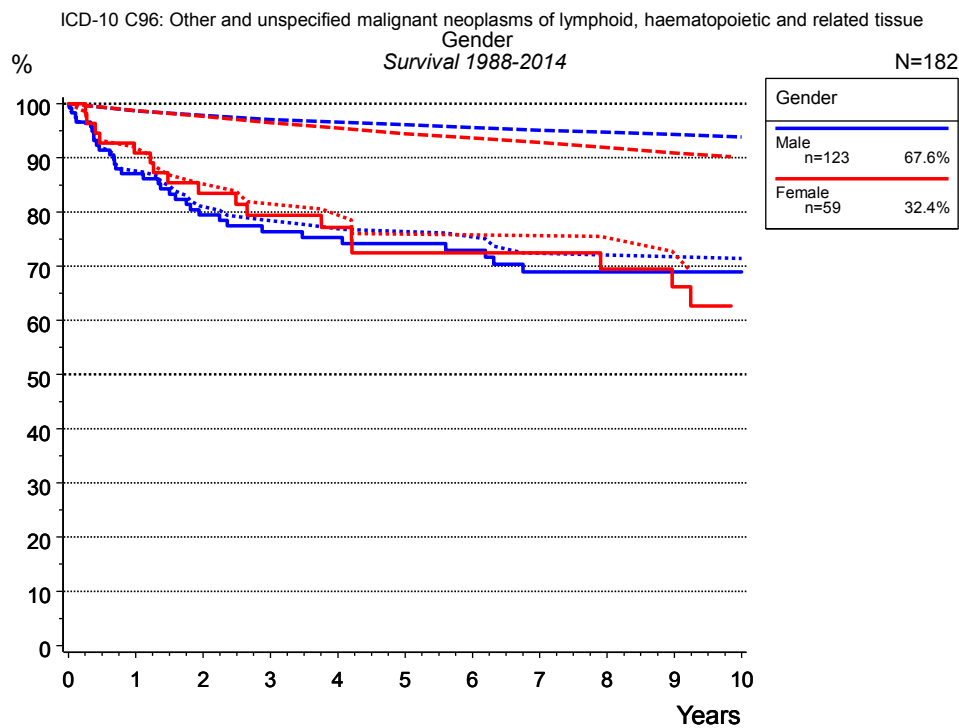


**Figure 1a.** Relative survival of patients with systemic Disease NOS by period of diagnosis. Included in the evaluation are 182 cases diagnosed between 1988 and 2014.

The presented survival curves are derived from clinical records with valid follow-up informations, which means that death certificate cases (DCO) cases are omitted from the analysis. With this one restriction, the MCR has provided population-based statistics since 1998, collecting data on all cancer cases in the region of southern Bavaria. Historical data of previous time periods can be heavily selected, therefore, univariate survival comparisons of the presented time periods must be carefully considered. Nonetheless, all calculable survival curves are depicted to facilitate the comparison of long time follow-up analyses of relative survival between particular cancers.

Years	Period of diagnosis					
	1988-1997 n=51		1998-2006 n=58		2007+ n=73	
	obs. %	rel. %	obs. %	rel. %	obs. %	rel. %
0	100.0	100.0	100.0	100.0	100.0	100.0
1	79.6	80.6	96.3	95.9	88.2	88.5
2	69.1	71.1	88.5	89.0	83.1	84.6
3	69.1	70.4	82.6	84.5	79.2	80.5
4	67.0	68.9	82.6	83.4		
5	64.9	67.6	78.6	81.0		
6	62.8	65.6	78.6	80.6		
7	60.6	64.7	74.5	78.2		
8	60.6	64.4				
9	58.4	63.8				
10	56.3	60.3				

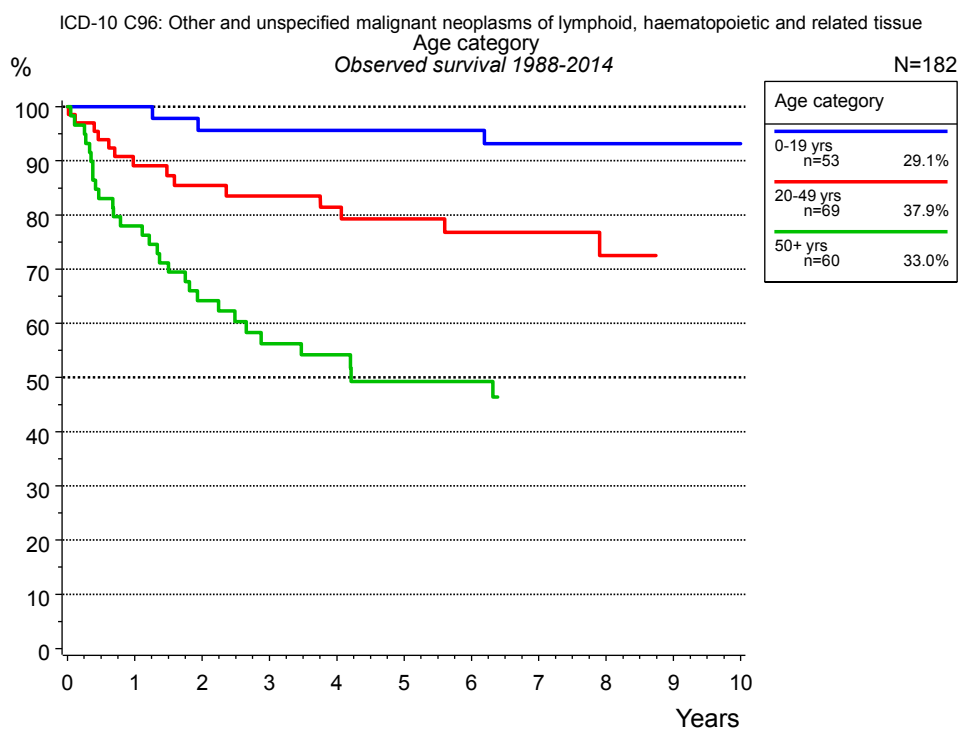
**Table 1b.** Observed (obs.) and relative (rel.) survival of patients with systemic Disease NOS by period of diagnosis for period 1988-2014 (N=182).



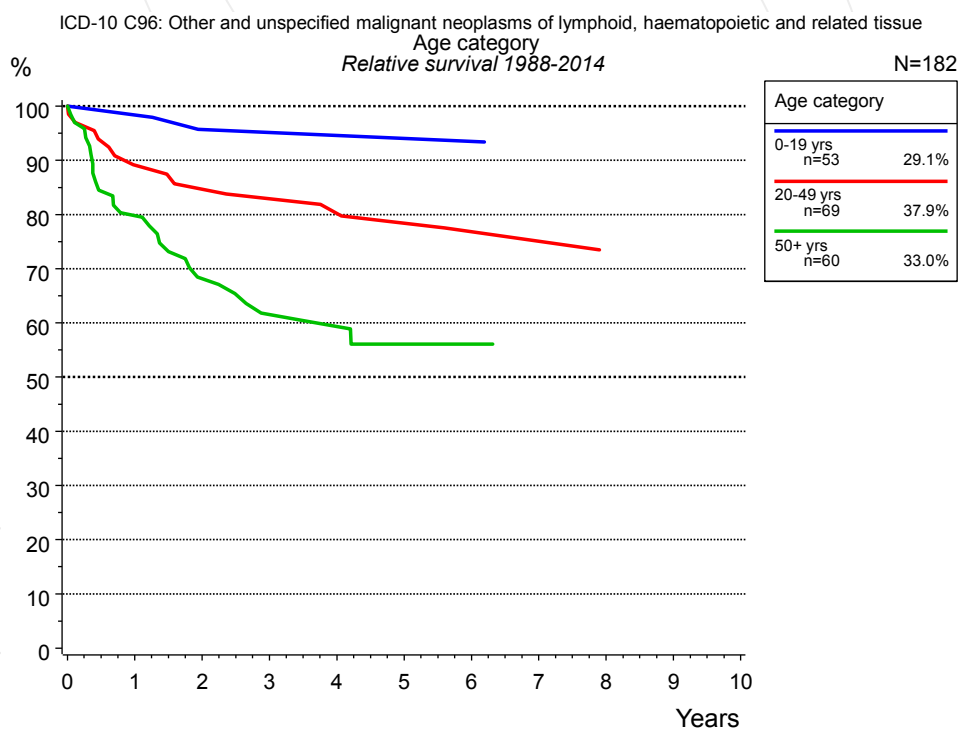
**Figure 2a.** Survival of patients with systemic Disease NOS by gender. Included in the evaluation are 182 cases diagnosed between 1988 and 2014.

Years	Gender			
	Male n=123		Female n=59	
	obs. %	rel. %	obs. %	rel. %
0	100.0	100.0	100.0	100.0
1	87.1	87.6	90.9	91.9
2	79.4	81.0	83.4	85.2
3	76.4	78.4	79.4	81.5
4	75.3	76.9	77.2	79.5
5	74.2	76.4	72.5	75.9
6	72.9	75.4	72.5	75.8
7	69.0	72.4	72.5	75.6
8	69.0	72.0	69.5	75.2
9	69.0	71.7	66.2	72.3
10	69.0	71.4	62.7	67.8

**Table 2b.** Observed (obs.) and relative (rel.) survival of patients with systemic Disease NOS by gender for period 1988-2014 (N=182).



**Figure 3a.** Observed survival of patients with systemic Disease NOS by age category. Included in the evaluation are 182 cases diagnosed between 1988 and 2014.



**Figure 3b.** Relative survival of patients with systemic Disease NOS by age category. Included in the evaluation are 182 cases diagnosed between 1988 and 2014.

Years	Age category					
	0-19 yrs n=53		20-49 yrs n=69		50+ yrs n=60	
	obs. %	rel. %	obs. %	rel. %	obs. %	rel. %
0	100.0	100.0	100.0	100.0	100.0	100.0
1	100.0	98.4	89.1	89.1	78.0	79.8
2	95.6	95.7	85.5	84.7	64.2	68.2
3	95.6	95.1	83.5	82.9	56.3	61.5
4	95.6	94.6	81.4	80.2	54.2	59.3
5	95.6	94.0	79.3	78.4	49.3	56.1
6	95.6	93.5	76.8	76.8	49.3	56.1
7			76.8	75.1		
8			72.5	73.3		
9			72.5	71.7		
10			72.5	70.2		

**Table 3c.** Observed (obs.) and relative (rel.) survival of patients with systemic Disease NOS by age category for period 1988-2014 (N=182).

## Shortcuts

MCR Munich Cancer Registry, Germany

NCI National Cancer Institute, USA

SEER Surveillance, Epidemiology, and End Results, USA

UICC Union for International Cancer Control, Geneva

DCO Death certificate only Death certificate provides the only notification to the registry.

NA Not available

NOS Not otherwise specified

OS Overall/Observed survival Overall/Observed survival (Kaplan-Meier estimate)

Date of entry: diagnosis  
Event: death from any cause

RS Relative survival Survival compared to “general population”, ratio of observed to expected survival (Ederer II method), reflecting cancer specific survival

AS Assembled survival Assembled chart of observed, expected, relative survival

CS Conditional survival Survival probability under the condition of surviving a given period of time

TTP Time to progression Time to first progression / relapse  
Date of entry: diagnosis  
Event: (progression / relapse): first local-, lymph node recurrence, distant metastasis or unspecified progression

1-KM 1 minus Kaplan-Meier estimator (“inverse” Kaplan-Meier estimator)

CI Cumulative incidence  
Death as competing risk (according to Kalbfleisch und Prentice)

PPS Post-progression survival Survival since first progression / relapse (Kaplan-Meier estimate)  
Date of entry (progression / relapse): first local-, lymph node recurrence, distant metastasis or unspecified progression  
Event: death from any cause

## Recommended Citation

Munich Cancer Registry. Survival ICD-10 C96: Systemic Disease NOS [Internet]. 2016 [updated 2016 Apr 11; cited 2016 Jun 1]. Available from: [http://www.tumorregister-muenchen.de/en/facts/surv/sC96\\_\\_E-ICD-10-C96-Systemic-Disease-NOS-survival.pdf](http://www.tumorregister-muenchen.de/en/facts/surv/sC96__E-ICD-10-C96-Systemic-Disease-NOS-survival.pdf)

## Copyright

The content of the public web site provided by the Munich Cancer Registry is available worldwide and free of charge. All documents are free to download, utilize, copy, print-out and distribute, providing that the MCR is referenced.

## Disclaimer

The Munich Cancer Registry reserves the right to not be responsible for the topicality, correctness, completeness or quality of the information provided. Liability claims regarding damage caused by the use of any information provided, including any kind of information which is incomplete or incorrect, will therefore be rejected.

**Index of figures and tables**

Fig./Tbl.		Page
1a	Relative survival by period of diagnosis (chart)	2
1b	Survival by period of diagnosis (table)	2
2a	Survival by gender (chart)	3
2b	Survival by gender (table)	3
3a	Observed survival by age category (chart)	4
3b	Relative survival by age category (chart)	4
3c	Survival by age category (table)	5