

Munich Cancer Registry



- ▶ Incidence and Mortality
- ▶ Selection Matrix
- ▶ Homepage
- ▶ *Deutsch*

ICD-10 D46: Myelodysplastic syndrome

Survival

Year of diagnosis	1988-1997	1998-2014
Patients	71	2,342
Diseases	71	2,346
Cases evaluated	55	791
Creation date	04/11/2016	
Export date	12/23/2015	
Population	4.64 m	



Munich Cancer Registry at Munich Cancer Center
Marchioninstr. 15
Munich, 81377
Germany

<http://www.tumorregister-muenchen.de/en>

http://www.tumorregister-muenchen.de/en/facts/surv/sD46__E-ICD-10-D46-Myelodysplastic-syndrome-survival.pdf

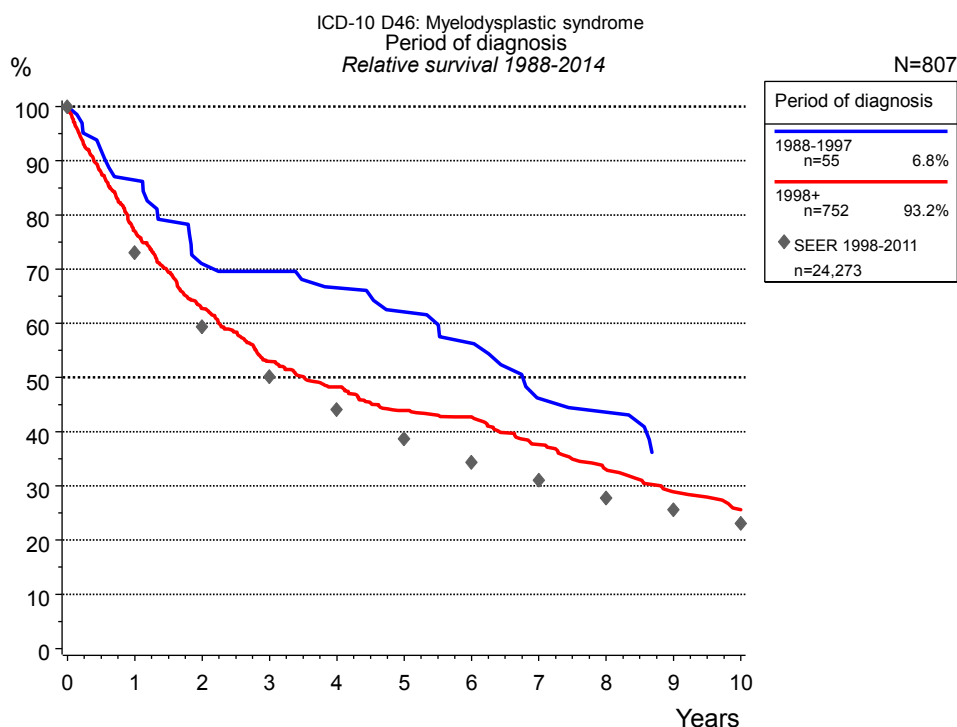


Figure 1a. Relative survival of patients with myelodysplastic syndrome by period of diagnosis. Included in the evaluation are 807 cases diagnosed between 1988 and 2014.

The survival results of the SEER program (Surveillance, Epidemiology, and End Results) of the American National Cancer Institute (NCI) are summarized as the period of diagnosis from 1998 to 2011, and are represented by gray diamonds in order to facilitate comparisons between MCR and SEER.

The presented survival curves are derived from clinical records with valid follow-up informations, which means that death certificate cases (DCO) cases are omitted from the analysis. With this one restriction, the MCR has provided population-based statistics since 1998, collecting data on all cancer cases in the region of southern Bavaria. Historical data of previous time periods can be heavily selected, therefore, univariate survival comparisons of the presented time periods must be carefully considered. Nonetheless, all calculable survival curves are depicted to facilitate the comparison of long time follow-up analyses of relative survival between particular cancers.

Years	Period of diagnosis			
	1988-1997 n=55		1998+ n=752	
	obs. %	rel. %	obs. %	rel. %
0	100.0	100.0	100.0	100.0
1	85.5	86.5	73.9	77.0
2	67.3	71.0	58.2	62.8
3	65.5	69.6	47.5	53.0
4	60.0	66.6	42.0	48.2
5	54.5	62.1	37.0	43.9
6	48.9	56.4	35.2	42.7
7	37.6	46.2	30.1	37.6
8	35.7	43.6	25.9	33.0
9	28.2	35.4	22.0	28.9
10			19.3	25.6

Table 1b. Observed (obs.) and relative (rel.) survival of patients with myelodysplastic syndrome by period of diagnosis for period 1988-2014 (N=807).

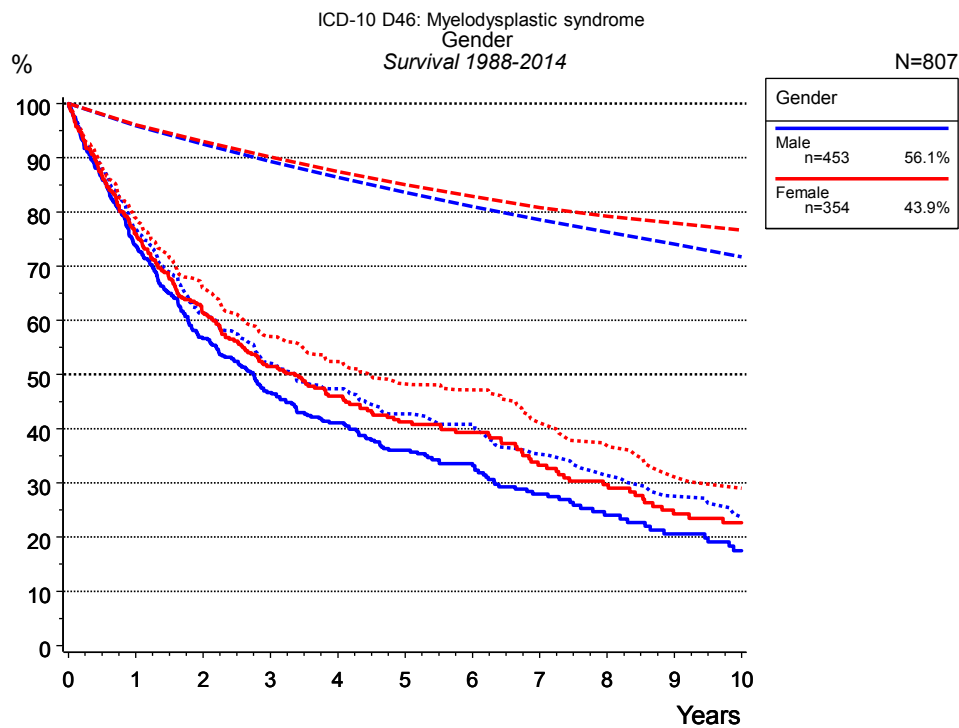


Figure 2a. Survival of patients with myelodysplastic syndrome by gender. Included in the evaluation are 807 cases diagnosed between 1988 and 2014.

Years	Gender			
	Male n=453		Female n=354	
	obs. %	rel. %	obs. %	rel. %
0	100.0	100.0	100.0	100.0
1	73.7	76.8	76.1	78.9
2	56.7	61.2	61.4	65.9
3	46.7	52.1	51.5	57.0
4	41.1	47.4	46.1	52.4
5	36.0	42.7	41.3	48.3
6	33.6	40.8	39.4	47.2
7	27.9	35.3	33.3	41.1
8	24.1	31.4	29.7	36.9
9	20.6	27.5	24.3	31.1
10	17.5	23.7	22.6	29.0

Table 2b. Observed (obs.) and relative (rel.) survival of patients with myelodysplastic syndrome by gender for period 1988-2014 (N=807).

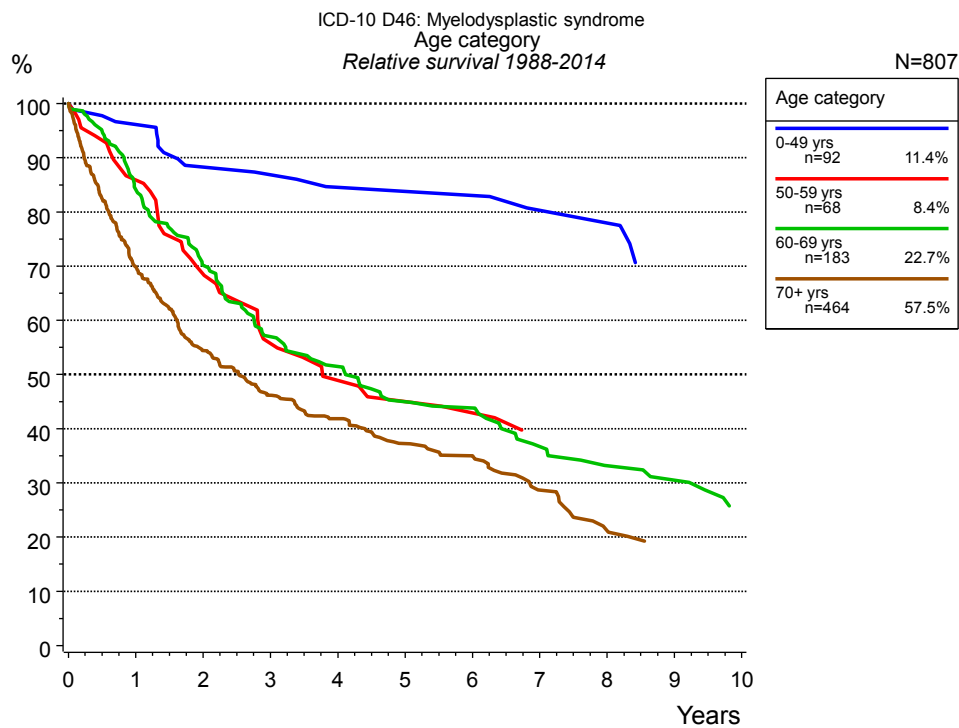


Figure 3a. Relative survival of patients with myelodysplastic syndrome by age category. Included in the evaluation are 807 cases diagnosed between 1988 and 2014.

Years	Age category							
	0-49 yrs n=92		50-59 yrs n=68		60-69 yrs n=183		70+ yrs n=464	
	obs. %	rel. %	obs. %	rel. %	obs. %	rel. %	obs. %	rel. %
0	100.0	100.0	100.0	100.0	100.0	100.0	100.0	100.0
1	96.6	96.1	86.2	85.9	83.4	84.1	65.5	69.8
2	88.4	88.3	69.0	68.5	68.1	70.1	48.0	54.4
3	87.1	86.9	55.6	55.7	54.6	57.0	38.4	46.2
4	84.3	84.5	48.4	48.9	48.6	51.5	32.8	41.9
5	84.3	83.8	44.5	45.0	41.8	45.0	27.3	37.3
6	84.3	83.1	42.4	42.9	40.2	43.8	24.2	35.0
7	80.0	80.3	37.7	38.8	32.8	36.7	18.2	28.7
8	80.0	78.0			28.6	33.2	13.0	21.2
9	69.8	69.8			26.4	30.5		
10	69.8	68.4			21.2	25.6		

Table 3b. Observed (obs.) and relative (rel.) survival of patients with myelodysplastic syndrome by age category for period 1988-2014 (N=807).

Shortcuts

MCR Munich Cancer Registry, Germany

NCI National Cancer Institute, USA

SEER Surveillance, Epidemiology, and End Results, USA

UICC Union for International Cancer Control, Geneva

DCO Death certificate only Death certificate provides the only notification to the registry.

NA Not available

NOS Not otherwise specified

OS Overall/Observed survival Overall/Observed survival (Kaplan-Meier estimate)

Date of entry: diagnosis
Event: death from any cause

RS Relative survival Survival compared to “general population”, ratio of observed to expected survival (Ederer II method), reflecting cancer specific survival

AS Assembled survival Assembled chart of observed, expected, relative survival

CS Conditional survival Survival probability under the condition of surviving a given period of time

TTP Time to progression Time to first progression / relapse
Date of entry: diagnosis
Event: (progression / relapse): first local-, lymph node recurrence, distant metastasis or unspecified progression

1-KM 1 minus Kaplan-Meier estimator (“inverse” Kaplan-Meier estimator)

CI Cumulative incidence
Death as competing risk (according to Kalbfleisch und Prentice)

PPS Post-progression survival Survival since first progression / relapse (Kaplan-Meier estimate)
Date of entry (progression / relapse): first local-, lymph node recurrence, distant metastasis or unspecified progression
Event: death from any cause

Recommended Citation

Munich Cancer Registry. Survival ICD-10 D46: Myelodysplastic syndrome [Internet]. 2016 [updated 2016 Apr 11; cited 2016 Jun 1]. Available from: http://www.tumorregister-muenchen.de/en/facts/surv/sD46__E-ICD-10-D46-Myelodysplastic-syndrome-survival.pdf

Copyright

The content of the public web site provided by the Munich Cancer Registry is available worldwide and free of charge. All documents are free to download, utilize, copy, print-out and distribute, providing that the MCR is referenced.

Disclaimer

The Munich Cancer Registry reserves the right to not be responsible for the topicality, correctness, completeness or quality of the information provided. Liability claims regarding damage caused by the use of any information provided, including any kind of information which is incomplete or incorrect, will therefore be rejected.

Index of figures and tables

Fig./Tbl.		Page
1a	Relative survival by period of diagnosis (chart)	2
1b	Survival by period of diagnosis (table)	2
2a	Survival by gender (chart)	3
2b	Survival by gender (table)	3
3a	Relative survival by age category (chart)	4
3b	Survival by age category (table)	4